

Company: Baywater Exploration & Prod. LLC
 Well: Triangle 32-22
 Field: Wattenberg
 County: Weld
 State: Colorado

Location: SHL - 1600' FNL & 2345' FNL SENW
 SWS 22 TWP 7N RGE 63W
 APN #: 051237204000

Date: May 11 2013
 Well Number: 7853
 Depth (m): 7853
 Depth (feet): 25750

Company: Baywater Exploration & Prod. LLC
 Well: Triangle 32-22
 Field: Wattenberg
 County: Weld
 State: Colorado

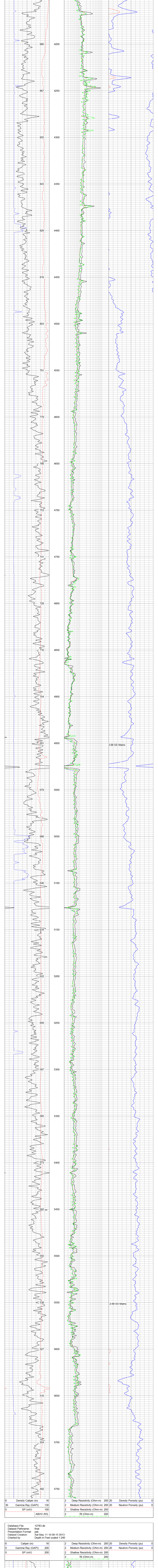
APN #: 051237204000
 Other Services: None
 Elevation: 5148.9
 C.I.: 4832
 C.I. 4832

Operator: Pioneer Energy Services
 Equipment Number: 419
 Manufacturer: Dan Buntalia

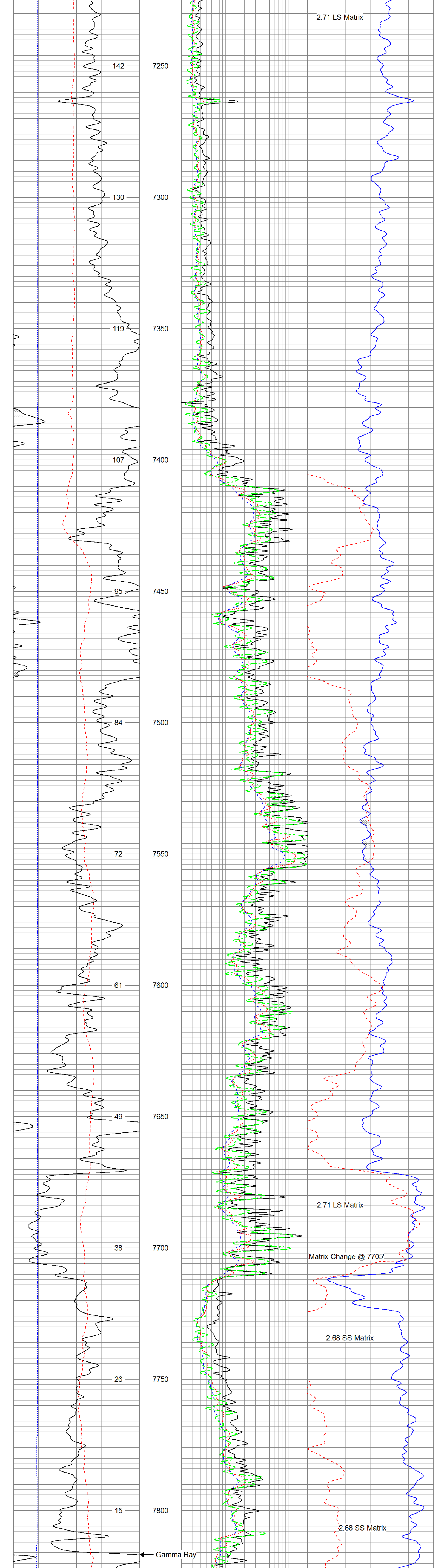
All interpretations are opinions based on inferences from electrical and other measurements and Pioneer Wireline Services, LLC cannot and does not guarantee the accuracy or correctness of any interpretation, and Pioneer Wireline Services, LLC will not be liable or responsible for any loss, costs, damages, or expenses incurred or sustained by anyone resulting from any interpretation made by any of our officers, agents or employees.

Annular volume calculated for 4.5" casing
 Ensign Drilling Rig 7
 Thank you for using Pioneer Energy Services.

Database File: 12783.db
 Dataset Pathname: final
 Presentation Format: pdc
 Dataset Creation: Sat May 11 10:09:15 2013
 Charted by: Depth in Feet scaled 1:240



Database File: 12783.db
 Dataset Pathname: final
 Presentation Format: pdc
 Dataset Creation: Sat May 11 10:09:15 2013
 Charted by: Depth in Feet scaled 1:240



Loggers TD: 7853'