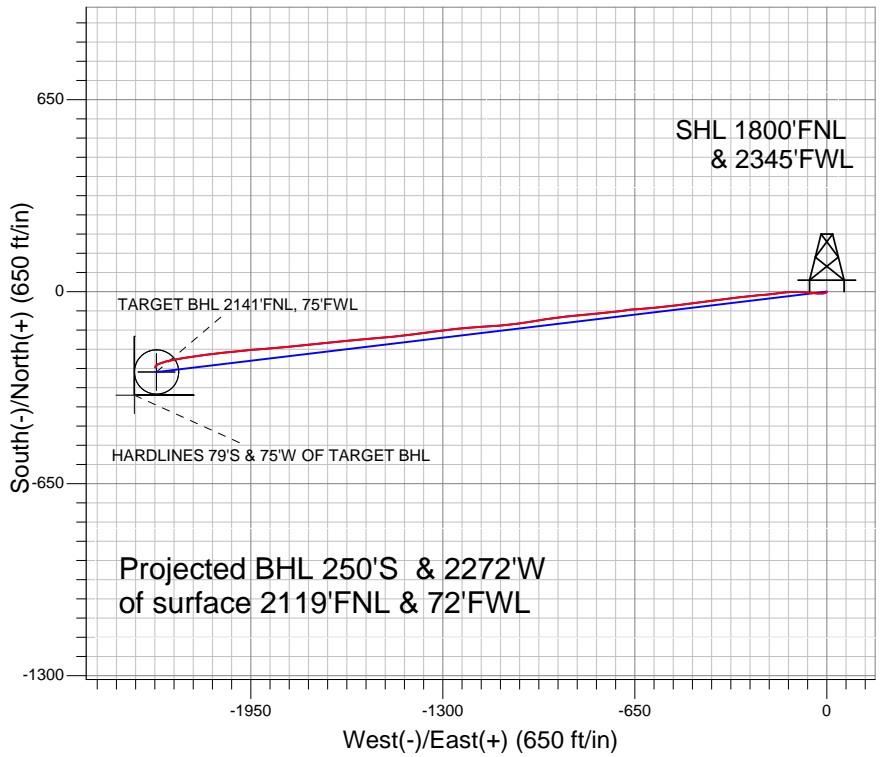
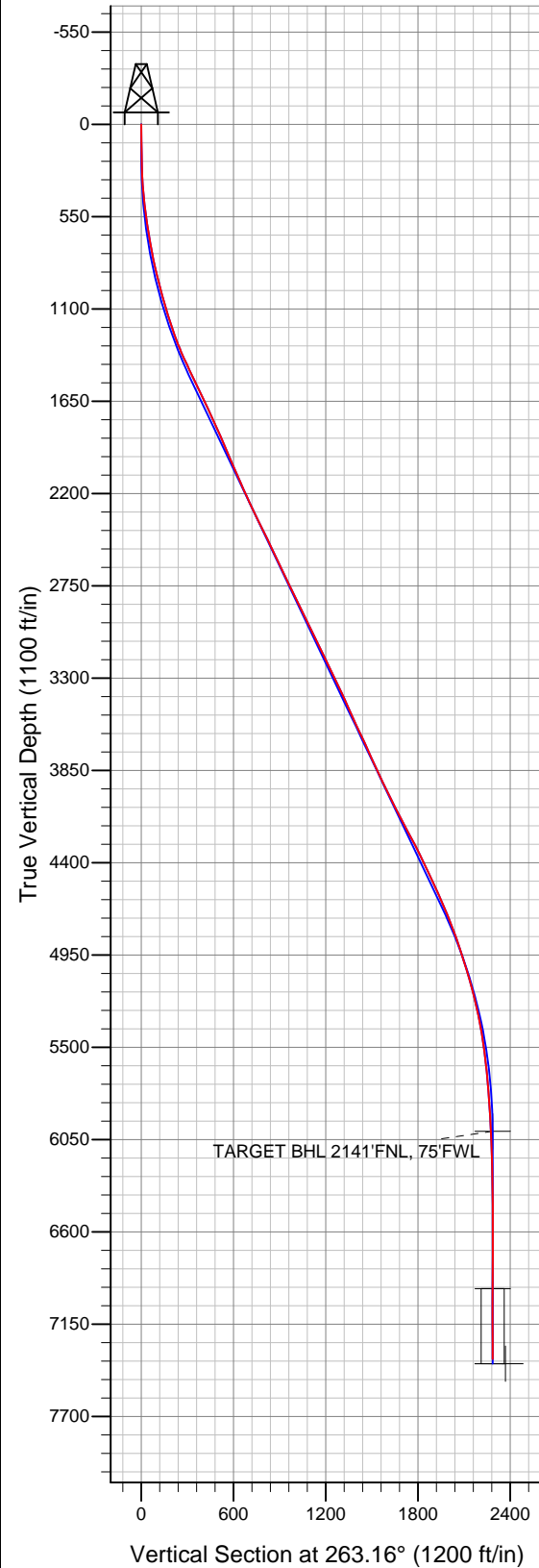


Well Name: **Triangle 32-22**
 Surface Location: Triangle 4 Pad Sec.22-T7N-R65W
 North American Datum 1983 , US State Plane 1983 , Colorado Northern Zone
 Ground Elevation: 4832.0

+N/-S	+E/-W	Northing	Easting	Latitude	Longitude	Slot
0.0	0.0	1448640.24	3236047.60	40.561813	-104.650423	

 Original Well Elev WELL @ 4848.0ft (Original Well Elev)

Bayswater Exploration & Production, LLC



LEGEND

- ◆ Triangle 32-22, Wellbore #1, Plan #1 (5-06-13)R V0
- Wellbore #1
- Survey #1

Final Survey Plot

Projected Final Survey -
 7855'MD & 7357'TVD @
 2286' VS 0.10 deg Inc
 318.60 deg AZ

Project: SEC.22-T7N-R65W
 Site: Triangle 4 Pad Sec.22-T7N-R65W
 Well: Triangle 32-22
 Plan: Wellbore #1



Directional

Bayswater Exploration & Production, LLC

SEC.22-T7N-R65W

Triangle 4 Pad Sec.22-T7N-R65W

Triangle 32-22

Wellbore #1

Survey: Survey #1

Standard Survey Report

13 May, 2013

Survey	Wellbore Data									
	Measured Depth (ft)	Inclination (°)	Azimuth (°)	Vertical Depth (ft)	+N/-S (ft)	+E/-W (ft)	Vertical Section (ft)	Dogleg Rate (°/100ft)	Build Rate (°/100ft)	Turn Rate (°/100ft)
Survey A	0.0	0.00	0.00	0.0	0.0	0.0	0.0	0.00	0.00	0.00
	185.0	1.50	219.80	185.0	-1.9	-1.6	1.8	0.81	0.81	0.00
	305.0	2.70	248.70	304.9	-4.1	-5.2	5.6	1.30	1.00	24.08
	426.0	6.10	261.70	425.5	-6.1	-14.2	14.8	2.91	2.81	10.74
	547.0	9.20	274.20	545.4	-6.3	-30.2	30.8	2.89	2.56	10.33
	641.0	9.50	274.90	638.2	-5.1	-45.4	45.7	0.34	0.32	0.74
	767.0	12.30	275.90	761.9	-2.8	-69.2	69.0	2.23	2.22	0.79
	892.0	14.90	272.10	883.4	-0.8	-98.5	97.9	2.20	2.08	-3.04
	1,017.0	16.70	264.70	1,003.7	-1.9	-132.4	131.7	2.16	1.44	-5.92
	1,142.0	18.30	262.20	1,122.9	-6.2	-169.7	169.3	1.41	1.28	-2.00
	1,267.0	20.80	265.40	1,240.7	-10.7	-211.3	211.1	2.18	2.00	2.56
	1,391.0	25.20	264.00	1,354.8	-15.2	-259.5	259.5	3.58	3.55	-1.13
	1,516.0	27.30	263.10	1,466.9	-21.4	-314.5	314.8	1.71	1.68	-0.72

Company:	Bayswater Exploration & Production, LLC	Local Co-ordinate Reference:	Well Triangle 32-22
Project:	SEC.22-T7N-R65W	TVD Reference:	WELL @ 4848.0ft (Original Well Elev)
Site:	Triangle 4 Pad Sec.22-T7N-R65W	MD Reference:	WELL @ 4848.0ft (Original Well Elev)
Well:	Triangle 32-22	North Reference:	True
Wellbore:	Wellbore #1	Survey Calculation Method:	Minimum Curvature
Design:	Wellbore #1	Database:	Landmark

Survey										
Measured Depth (ft)	Inclination (°)	Azimuth (°)	Vertical Depth (ft)	+N/-S (ft)	+E/-W (ft)	Vertical Section (ft)	Dogleg Rate (°/100ft)	Build Rate (°/100ft)	Turn Rate (°/100ft)	
1,641.0	27.80	262.60	1,577.7	-28.6	-371.8	372.6	0.44	0.40	-0.40	
1,766.0	27.30	262.00	1,688.6	-36.4	-429.1	430.4	0.46	-0.40	-0.48	
1,891.0	26.60	263.40	1,800.0	-43.6	-485.3	487.1	0.76	-0.56	1.12	
2,016.0	24.70	264.10	1,912.7	-49.5	-539.1	541.2	1.54	-1.52	0.56	
2,141.0	25.30	264.30	2,025.9	-54.8	-591.7	594.0	0.48	0.48	0.16	
2,266.0	25.80	265.90	2,138.7	-59.4	-645.4	647.9	0.68	0.40	1.28	
2,391.0	27.10	261.20	2,250.6	-65.7	-700.6	703.5	1.97	1.04	-3.76	
2,516.0	27.90	264.70	2,361.5	-72.8	-757.9	761.2	1.44	0.64	2.80	
2,641.0	28.50	265.70	2,471.7	-77.7	-816.8	820.2	0.61	0.48	0.80	
2,766.0	26.60	262.90	2,582.5	-83.4	-874.3	878.0	1.84	-1.52	-2.24	
2,891.0	28.40	261.90	2,693.4	-91.1	-931.5	935.7	1.49	1.44	-0.80	
3,015.0	27.30	260.60	2,803.0	-99.9	-988.7	993.6	1.01	-0.89	-1.05	
3,140.0	28.10	262.70	2,913.7	-108.3	-1,046.2	1,051.7	1.01	0.64	1.68	
3,265.0	29.10	265.40	3,023.5	-114.5	-1,105.7	1,111.5	1.31	0.80	2.16	
3,390.0	27.30	266.10	3,133.6	-118.8	-1,164.6	1,170.5	1.46	-1.44	0.56	
3,515.0	27.30	264.70	3,244.7	-123.4	-1,221.8	1,227.8	0.51	0.00	-1.12	
3,640.0	28.10	263.30	3,355.4	-129.5	-1,279.6	1,285.9	0.82	0.64	-1.12	
3,765.0	25.90	264.00	3,466.7	-135.8	-1,335.9	1,342.6	1.78	-1.76	0.56	
3,890.0	26.60	260.60	3,578.8	-143.2	-1,390.7	1,397.9	1.33	0.56	-2.72	
4,015.0	27.70	264.80	3,690.1	-150.4	-1,447.3	1,454.9	1.77	0.88	3.36	
4,140.0	25.50	265.00	3,801.8	-155.4	-1,503.0	1,510.8	1.76	-1.76	0.16	
4,265.0	27.50	264.70	3,913.7	-160.4	-1,558.6	1,566.6	1.60	1.60	-0.24	
4,390.0	29.00	264.80	4,023.8	-165.8	-1,617.5	1,625.7	1.20	1.20	0.08	
4,514.0	30.40	264.10	4,131.5	-171.8	-1,678.6	1,687.1	1.16	1.13	-0.56	
4,639.0	29.60	263.80	4,239.8	-178.4	-1,740.8	1,749.6	0.65	-0.64	-0.24	
4,764.0	28.50	264.00	4,349.0	-184.8	-1,801.1	1,810.3	0.88	-0.88	0.16	
4,889.0	26.70	265.90	4,459.8	-190.0	-1,858.8	1,868.2	1.60	-1.44	1.52	
5,014.0	27.10	265.60	4,571.3	-194.1	-1,915.2	1,924.7	0.34	0.32	-0.24	
5,139.0	24.70	264.10	4,683.7	-199.0	-1,969.6	1,979.3	1.99	-1.92	-1.20	
5,264.0	21.70	264.00	4,798.6	-204.1	-2,018.5	2,028.5	2.40	-2.40	-0.08	
5,389.0	20.10	262.90	4,915.4	-209.2	-2,062.8	2,073.1	1.32	-1.28	-0.88	
5,514.0	18.20	263.10	5,033.5	-214.2	-2,103.5	2,114.1	1.52	-1.52	0.16	
5,639.0	16.70	261.90	5,152.7	-219.1	-2,140.7	2,151.6	1.23	-1.20	-0.96	
5,764.0	13.60	259.60	5,273.3	-224.3	-2,172.9	2,184.2	2.53	-2.48	-1.84	
5,889.0	10.60	259.60	5,395.6	-229.0	-2,198.7	2,210.3	2.40	-2.40	0.00	
6,014.0	8.00	260.00	5,518.9	-232.6	-2,218.6	2,230.5	2.08	-2.08	0.32	
6,138.0	6.70	255.70	5,641.9	-235.9	-2,234.1	2,246.3	1.14	-1.05	-3.47	
6,263.0	4.70	252.40	5,766.3	-239.2	-2,246.0	2,258.5	1.62	-1.60	-2.64	
6,388.0	3.70	250.40	5,890.9	-242.1	-2,254.7	2,267.5	0.81	-0.80	-1.60	
6,498.3	2.99	248.35	6,001.0	-244.4	-2,260.8	2,273.8	0.65	-0.64	-1.86	
TARGET BHL 2141'FNL, 75'FWL										
6,513.0	2.90	248.00	6,015.7	-244.6	-2,261.5	2,274.5	0.65	-0.64	-2.37	
6,638.0	2.30	229.70	6,140.6	-247.4	-2,266.3	2,279.6	0.81	-0.48	-14.64	
6,763.0	2.50	218.40	6,265.5	-251.2	-2,269.9	2,283.7	0.41	0.16	-9.04	
6,888.0	1.10	209.70	6,390.4	-254.4	-2,272.2	2,286.3	1.14	-1.12	-6.96	
7,013.0	0.80	188.60	6,515.4	-256.3	-2,272.9	2,287.3	0.36	-0.24	-16.88	
7,138.0	0.70	35.30	6,640.4	-256.5	-2,272.6	2,287.0	1.17	-0.08	-122.64	
7,263.0	1.10	17.30	6,765.4	-254.8	-2,271.8	2,286.0	0.39	0.32	-14.40	
7,388.0	1.10	1.50	6,890.4	-252.4	-2,271.4	2,285.3	0.24	0.00	-12.64	
7,435.4	0.86	5.70	6,937.7	-251.6	-2,271.4	2,285.2	0.52	-0.50	8.86	
TARGET CIRCLE 2141'FNL & 75'FWL										
7,513.0	0.50	21.00	7,015.3	-250.7	-2,271.2	2,284.9	0.52	-0.47	19.71	
7,637.0	0.40	240.60	7,139.3	-250.4	-2,271.4	2,285.0	0.68	-0.08	-113.23	
7,762.0	0.10	348.70	7,264.3	-250.5	-2,271.8	2,285.5	0.35	-0.24	86.48	

Company:	Bayswater Exploration & Production, LLC	Local Co-ordinate Reference:	Well Triangle 32-22
Project:	SEC.22-T7N-R65W	TVD Reference:	WELL @ 4848.0ft (Original Well Elev)
Site:	Triangle 4 Pad Sec.22-T7N-R65W	MD Reference:	WELL @ 4848.0ft (Original Well Elev)
Well:	Triangle 32-22	North Reference:	True
Wellbore:	Wellbore #1	Survey Calculation Method:	Minimum Curvature
Design:	Wellbore #1	Database:	Landmark

Survey									
Measured Depth (ft)	Inclination (°)	Azimuth (°)	Vertical Depth (ft)	+N/-S (ft)	+E/-W (ft)	Vertical Section (ft)	Dogleg Rate (°/100ft)	Build Rate (°/100ft)	Turn Rate (°/100ft)
7,855.0	0.10	318.60	7,357.3	-250.4	-2,271.9	2,285.5	0.06	0.00	-32.37
HARDLINES 79'S & 75'W OF TARGET BHL									

Checked By: _____ Approved By: _____ Date: _____