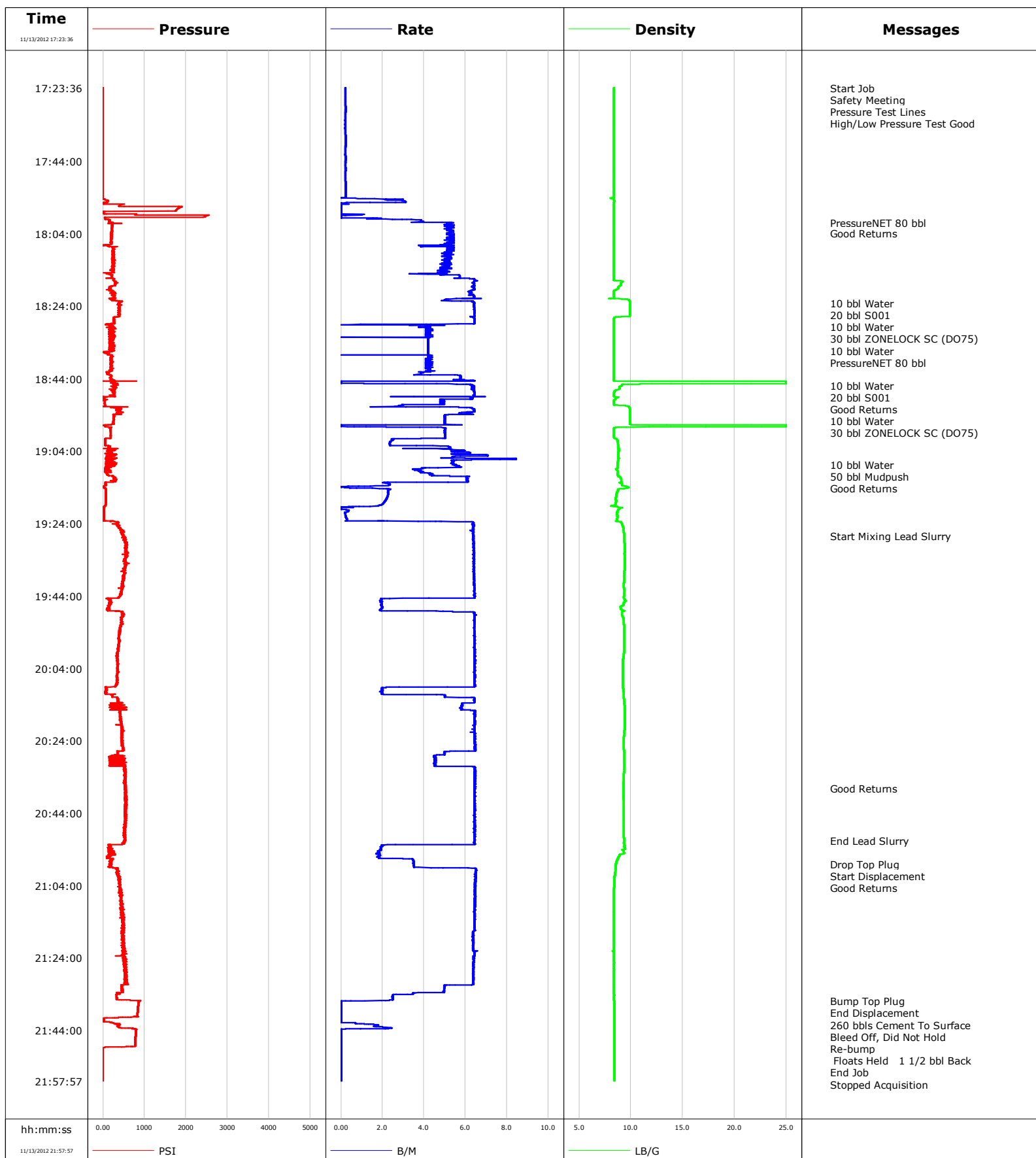


**Well** SG 8512E-24  
**Field** Story Gulch  
**Engineer** Willardson / Fairbrook  
**Country** United States

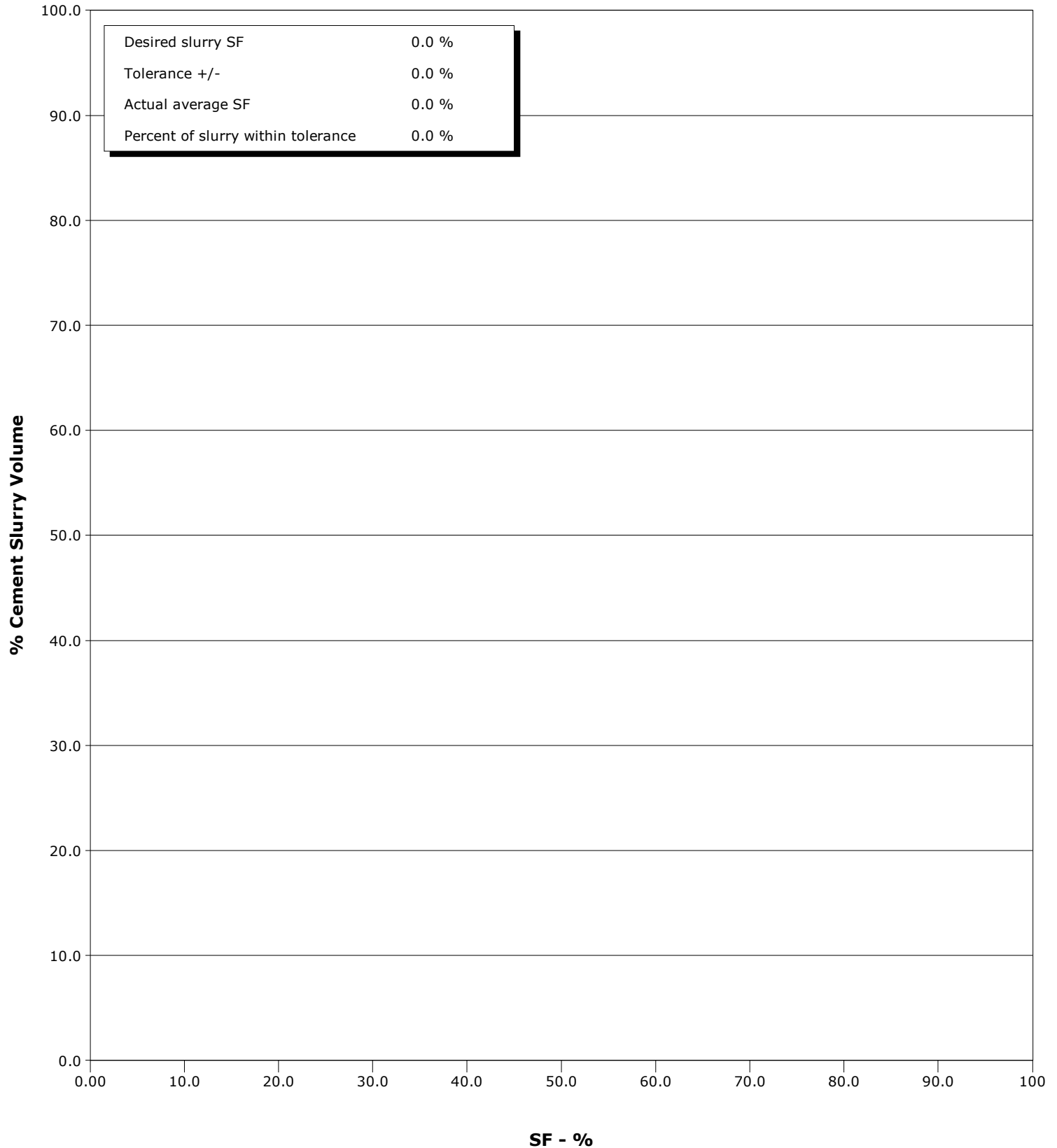
**Client** Encana  
**SIR No.** CDXM-00011  
**Job Type** 9 5/8 Surface  
**Job Date** 11-13-2012



**Well** SG 8512E-24  
**Field** Story Gulch  
**Engineer** Willardson / Fairbrook  
**Country** United States

**Client** Encana  
**SIR No.** CDXM-00011  
**Job Type** 9 5/8 Surface  
**Job Date** 11-13-2012

- 07/14/1972 12:59:44 to 07/14/1972 13:03:28





# Cementing Service Report

				Customer Encana		Job Number CDXM-00011	
Well SG 8512E-24 8512E-24			Location (legal) DL24		Schlumberger Location Grand Junction		Job Start Nov/13/2012
Field Story Gulch		Formation Name/Type Dirty-Sandstone		Deviation	Bit Size	Well MD 3037.0 ft	Well TVD 3037.0 ft
County Garfield		State/Province Colorado		BHP	BHST 120 degF	BHCT 96 degF	Pore Press. Gradient
Well Master 0631420597		API/UWI 5045211740000					
Rig Name Patterson 330		Drilled For Gas	Service Via Land	Casing/Liner			
				Depth, ft	Size, in	Weight, lb/ft	Grade
Offshore Zone		Well Class New	Well Type Development	3037.0	0.000	0.0	
				0.0	0.000	0.0	
Drilling Fluid Type		Max. Density	Plastic Viscosity	Tubing/Drill Pipe			
				Depth,	Size,	Weight,	Grade
Service Line Cementing		Job Type 9 5/8 Surface					
Max. Allowed Tub. Press 1500 psi		Max. Allowed Ann. Press	WH Connection Single Cement head	Perforations/Open Hole			
				Top,	Bottom,	No. of Shots	Total Interval
							Diameter
				Treat Down Casing	Displacement	Packer Type	Packer Depth
				Tubing Vol.	Casing Vol.	Annular Vol.	Openhole Vol.
Casing/Tubing Secured <input checked="" type="checkbox"/>		1 Hole Vol. Circulated prior to Cement <input checked="" type="checkbox"/>		Casing Tools		Squeeze Job	
Lift Pressure 1503 psi				Shoe Type Float		Squeeze Type	
Pipe Rotated <input type="checkbox"/>		Pipe Reciprocated <input type="checkbox"/>		Shoe Depth 3035.0 ft		Tool Type	
No. Centralizers		Top Plugs 1	Bottom Plugs	Stage Tool Type		Tool Depth	
Cement Head Type Single				Stage Tool Depth		Tail Pipe Size	
Job Scheduled For Nov/13/2012		Arrived on Location Nov/13/2012	Leave Location Nov/13/2012	Collar Type Float		Tail Pipe Depth	
				Collar Depth 2992.0 ft		Sqz. Total Vol.	
Date	Time 24-hr clock	Treating Pressure PSI	Flow Rate B/M	Density LB/G	Volume BBL	Message	
11/13/2012	16:46:38					Started Acquisition	
11/13/2012	17:23:36	-5	0.2	8.37	0.0		
11/13/2012	17:23:40					Start Job	
11/13/2012	17:23:40	-5	0.2	8.36	0.0		
11/13/2012	17:23:43					Safety Meeting	
11/13/2012	17:23:43	-5	0.2	8.36	0.0		
11/13/2012	17:23:52					Pressure Test Lines	
11/13/2012	17:23:52	-5	0.2	8.36	0.1		
11/13/2012	17:23:58					High/Low Pressure Test Good	
11/13/2012	17:23:58	-5	0.2	8.36	0.1		
11/13/2012	17:26:38	-5	0.2	8.36	0.6		
11/13/2012	17:31:38	-5	0.2	8.37	1.6		
11/13/2012	17:36:38	-5	0.2	8.37	2.6		
11/13/2012	17:41:38	-4	0.2	8.37	3.7		
11/13/2012	17:46:38	-4	0.2	8.37	4.8		
11/13/2012	17:51:38	-8	0.2	8.37	5.8		
11/13/2012	17:56:38	1869	0.0	8.36	9.5		
11/13/2012	18:00:56					PressureNET 80 bbl	
11/13/2012	18:00:56	233	5.2	8.36	14.0		
11/13/2012	18:01:38	209	5.4	8.36	17.6		
11/13/2012	18:03:50					Good Returns	

Well			Field		Job Start		Customer		Job Number	
SG 8512E-24 8512E-24			Story Gulch		Nov/13/2012		Encana		CDXM-00011	
Date	Time 24-hr clock	Treating Pressure PSI	Flow Rate B/M	Density LB/G	Volume BBL	Message				
11/13/2012	18:06:38	198	5.4	8.36	44.0					
11/13/2012	18:11:38	278	5.2	8.36	69.5					
11/13/2012	18:16:38	267	6.4	8.34	95.4					
11/13/2012	18:21:38	282	6.4	8.34	127.2					
11/13/2012	18:23:04					10 bbl Water				
11/13/2012	18:23:04					20 bbl S001				
11/13/2012	18:23:04	383	6.4	9.87	135.5					
11/13/2012	18:23:05					10 bbl Water				
11/13/2012	18:23:05	402	6.4	9.87	135.6					
11/13/2012	18:23:54					30 bbl ZONELOCK SC (D075)				
11/13/2012	18:23:54	373	6.4	9.87	140.9					
11/13/2012	18:26:38	389	6.4	9.87	158.4					
11/13/2012	18:31:38	217	4.2	8.35	184.3					
11/13/2012	18:35:22					10 bbl Water				
11/13/2012	18:35:22	165	4.2	8.35	199.8					
11/13/2012	18:35:45					PressureNET 80 bbl				
11/13/2012	18:35:45	263	4.2	8.35	201.5					
11/13/2012	18:36:38	168	4.2	8.35	205.2					
11/13/2012	18:41:38	177	4.3	8.36	226.3					
11/13/2012	18:45:52					10 bbl Water				
11/13/2012	18:45:52	362	6.4	9.10	244.9					
11/13/2012	18:45:53					20 bbl S001				
11/13/2012	18:45:53	278	6.3	9.10	245.0					
11/13/2012	18:46:19					Good Returns				
11/13/2012	18:46:19	272	6.4	8.91	247.8					
11/13/2012	18:46:38	288	6.4	8.91	249.8					
11/13/2012	18:48:57					10 bbl Water				
11/13/2012	18:48:57	290	6.9	8.34	264.7					
11/13/2012	18:51:08					30 bbl ZONELOCK SC (D075)				
11/13/2012	18:51:08	39	4.9	8.35	276.2					
11/13/2012	18:51:38	58	2.7	9.72	277.7					
11/13/2012	18:56:38	251	5.0	9.87	304.7					
11/13/2012	19:01:38	49	2.4	8.72	323.9					
11/13/2012	19:06:38	82	5.4	8.75	350.0					
11/13/2012	19:07:41					10 bbl Water				
11/13/2012	19:07:41	317	5.5	8.69	355.7					
11/13/2012	19:07:42					50 bbl Mudpush				
11/13/2012	19:07:42	317	5.5	8.68	355.8					
11/13/2012	19:08:50					Good Returns				
11/13/2012	19:08:50	50	3.9	8.68	361.7					
11/13/2012	19:11:38	254	6.1	9.03	374.5					
11/13/2012	19:16:38	67	2.2	8.58	388.3					
11/13/2012	19:21:38	19	0.2	8.67	394.2					
11/13/2012	19:26:38	443	6.4	9.33	415.4					
11/13/2012	19:27:35					Start Mixing Lead Slurry				
11/13/2012	19:27:35	498	6.4	9.36	421.5					
11/13/2012	19:31:38	535	6.4	9.40	447.4					
11/13/2012	19:36:38	498	6.4	9.40	479.4					
11/13/2012	19:41:38	483	6.4	9.33	511.4					
11/13/2012	19:46:38	134	2.0	9.24	534.6					
11/13/2012	19:51:38	444	6.4	9.32	559.6					
11/13/2012	19:56:38	395	6.4	9.35	591.7					
11/13/2012	20:01:38	348	6.4	9.23	623.9					
11/13/2012	20:06:38	349	6.5	9.20	656.2					

Well SG 8512E-24 8512E-24			Field Story Gulch	Job Start Nov/13/2012	Customer Encana	Job Number CDXM-00011
Date	Time 24-hr clock	Treating Pressure PSI	Flow Rate B/M	Density LB/G	Volume BBL	Message
11/13/2012	20:16:38	419	6.4	9.41	709.1	
11/13/2012	20:21:38	480	6.4	9.36	741.3	
11/13/2012	20:26:38	500	6.5	9.33	773.6	
11/13/2012	20:31:38	540	6.5	9.37	798.3	
11/13/2012	20:36:38	554	6.5	9.26	830.5	
11/13/2012	20:37:12					Good Returns
11/13/2012	20:37:12	541	6.4	9.26	834.2	
11/13/2012	20:41:38	564	6.4	9.30	862.7	
11/13/2012	20:46:38	555	6.4	9.30	894.9	
11/13/2012	20:51:38	537	6.4	9.35	927.1	
11/13/2012	20:51:39					End Lead Slurry
11/13/2012	20:51:39	509	6.4	9.35	927.2	
11/13/2012	20:56:38	200	3.4	8.73	941.3	
11/13/2012	20:58:01					Drop Top Plug
11/13/2012	20:58:01	161	3.5	8.56	946.2	
11/13/2012	20:58:03					Start Displacement
11/13/2012	20:58:03	173	3.5	8.56	946.3	
11/13/2012	21:00:56					Good Returns
11/13/2012	21:00:56	358	6.5	8.45	961.9	
11/13/2012	21:01:38	376	6.5	8.42	966.4	
11/13/2012	21:06:38	461	6.4	8.37	998.7	
11/13/2012	21:11:38	430	6.5	8.37	1031.0	
11/13/2012	21:16:38	463	6.4	8.38	1063.2	
11/13/2012	21:21:38	506	6.4	8.38	1095.1	
11/13/2012	21:26:38	532	6.4	8.38	1127.1	
11/13/2012	21:31:38	452	5.0	8.36	1158.7	
11/13/2012	21:35:56					Bump Top Plug
11/13/2012	21:35:56	849	0.0	8.38	1174.4	
11/13/2012	21:35:58					End Displacement
11/13/2012	21:35:58	865	0.0	8.38	1174.4	
11/13/2012	21:36:14					260 bbls Cement To Surface
11/13/2012	21:36:14	859	0.0	8.38	1174.4	
11/13/2012	21:36:38	852	0.0	8.38	1174.4	
11/13/2012	21:37:07					Bleed Off, Did Not Hold
11/13/2012	21:37:07	847	0.0	8.39	1174.4	
11/13/2012	21:40:41					Re-bump
11/13/2012	21:40:41	11	0.0	8.39	1174.4	
11/13/2012	21:41:38	148	0.0	8.39	1174.4	
11/13/2012	21:42:37					Floats Held 1 1/2 bbl Back
11/13/2012	21:42:37	397	1.7	8.39	1175.3	
11/13/2012	21:46:38	782	0.0	8.39	1177.2	
11/13/2012	21:51:38	-6	0.0	8.40	1177.2	
11/13/2012	21:56:38	-6	0.0	8.40	1177.2	
11/13/2012	21:58:04					End Job

Well SG 8512E-24 8512E-24	Field Story Gulch	Job Start Nov/13/2012	Customer Encana	Job Number CDXM-00011
------------------------------	----------------------	--------------------------	--------------------	--------------------------

Post Job Summary

Average Pump Rates, bbl/min					Volume of Fluid Injected, bbl			
Slurry 4.7	N2	Mud 0.0	Maximum Rate 8.5		Total Slurry 1177.2	Mud 0.0	Spacer 358.8	N2
Treating Pressure Summary, psi					Breakdown Fluid			
Maximum 2564	Final 0	Average 366	Bump Plug to 1000	Breakdown	Type	Volume	Density	
Avg. N2 Percent	Designed Slurry Volume 558.0 bbl		Displacement 228.3 bbl	Mix Water Temp 90 degF	Cement Circulated to Surface? <input checked="" type="checkbox"/>	Volume 260.0 bbl		
					Washed Thru Perfs <input type="checkbox"/>	To		
Customer or Authorized Representative Ira Cox			Schlumberger Supervisor Willardson / Fairbrook			Circulation Lost <input type="checkbox"/>	Job Completed <input checked="" type="checkbox"/>	
					-	-		