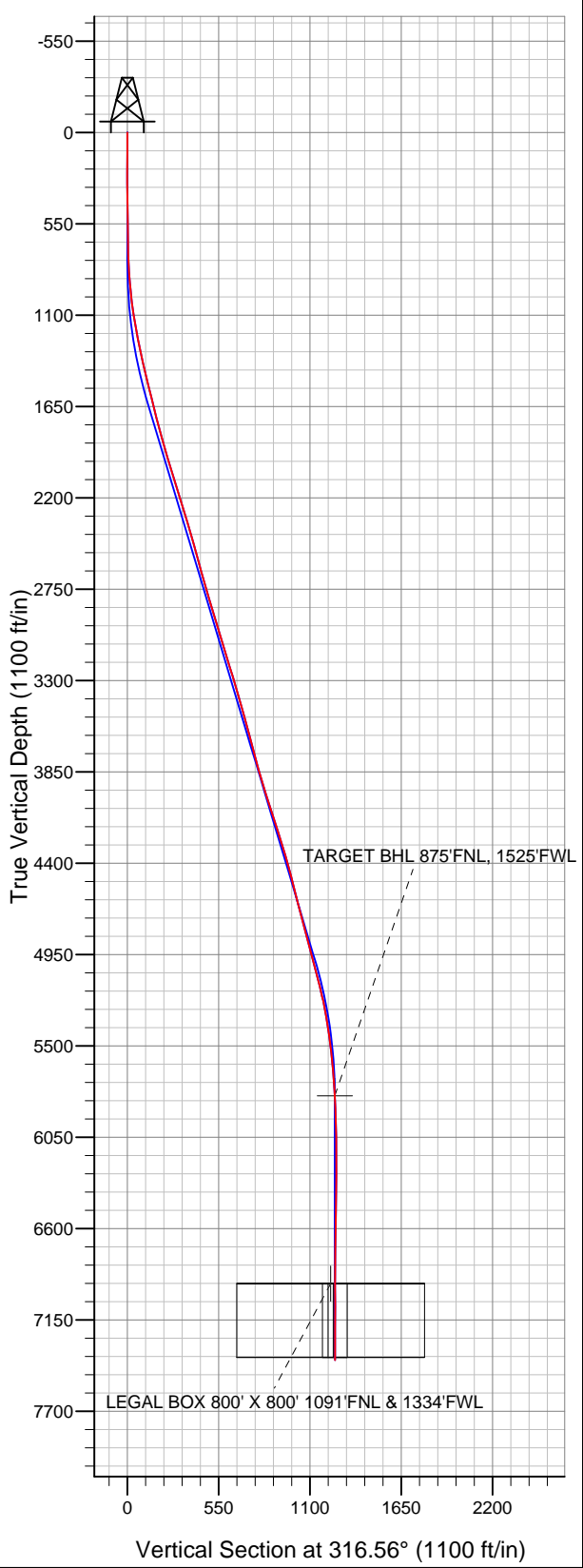
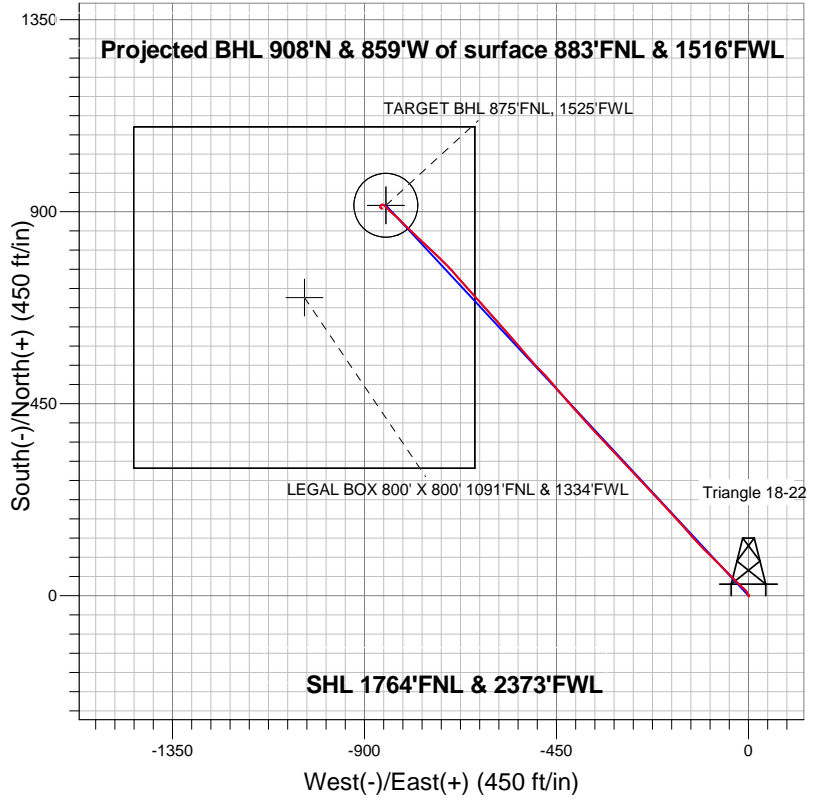


**Well Name: Triangle 18-22**

Surface Location: Triangle 4 Pad Sec.22-T7N-R65W  
 North American Datum 1983 US State Plane 1983 Colorado Northern Zone  
 Ground Elevation: 4832.0  
 +N/-S 0.0      +E/-W 0.0      Northing 1448676.22      Easting 3236075.04      Latitude 40.561911      Longitude -104.650323      Slot  
 Original Well Elev WELL @ 4848.0ft (Original Well Elev)



**Bayswater Exploration & Production, LLC**



**LEGEND**

- Triangle 18-22, Wellbore #1, Plan #1 (10-02-12) V0
- Wellbore #1
- Survey #1

**Final Survey Plot**

**Projected Final Survey -  
 7555'MD & 7391'TVD @ 1250'VS  
 0.4 deg Inc 85.1 deg AZ**

Project: SEC.22-T7N-R65W  
 Site: Triangle 4 Pad Sec.22-T7N-R65W  
 Well: Triangle 18-22  
 Plan: Wellbore #1



# **Bayswater Exploration & Production, LLC**

**SEC.22-T7N-R65W**

**Triangle 4 Pad Sec.22-T7N-R65W**

**Triangle 18-22**

**Wellbore #1**

**Survey: Survey #1**

## **Standard Survey Report**

**29 April, 2013**

<b>Company:</b>	Bayswater Exploration & Production, LLC	<b>Local Co-ordinate Reference:</b>	Well Triangle 18-22
<b>Project:</b>	SEC.22-T7N-R65W	<b>TVD Reference:</b>	WELL @ 4848.0ft (Original Well Elev)
<b>Site:</b>	Triangle 4 Pad Sec.22-T7N-R65W	<b>MD Reference:</b>	WELL @ 4848.0ft (Original Well Elev)
<b>Well:</b>	Triangle 18-22	<b>North Reference:</b>	True
<b>Wellbore:</b>	Wellbore #1	<b>Survey Calculation Method:</b>	Minimum Curvature
<b>Design:</b>	Wellbore #1	<b>Database:</b>	Landmark

<b>Project</b>	SEC.22-T7N-R65W, Weld County, Colorado		
<b>Map System:</b>	US State Plane 1983	<b>System Datum:</b>	Mean Sea Level
<b>Geo Datum:</b>	North American Datum 1983		Using Well Reference Point
<b>Map Zone:</b>	Colorado Northern Zone		Using geodetic scale factor

<b>Site</b>	Triangle 4 Pad Sec.22-T7N-R65W				
<b>Site Position:</b>		<b>Northing:</b>	1,448,664.11 ft	<b>Latitude:</b>	40.561878
<b>From:</b>	Lat/Long	<b>Easting:</b>	3,236,065.71 ft	<b>Longitude:</b>	-104.650357
<b>Position Uncertainty:</b>	0.0 ft	<b>Slot Radius:</b>	"	<b>Grid Convergence:</b>	0.55 °

<b>Well</b>	Triangle 18-22					
<b>Well Position</b>	<b>+N/-S</b>	0.0 ft	<b>Northing:</b>	1,448,676.22 ft	<b>Latitude:</b>	40.561911
	<b>+E/-W</b>	0.0 ft	<b>Easting:</b>	3,236,075.04 ft	<b>Longitude:</b>	-104.650323
<b>Position Uncertainty</b>		0.0 ft	<b>Wellhead Elevation:</b>	ft	<b>Ground Level:</b>	4,832.0 ft

<b>Wellbore</b>	Wellbore #1				
<b>Magnetics</b>	<b>Model Name</b>	<b>Sample Date</b>	<b>Declination (°)</b>	<b>Dip Angle (°)</b>	<b>Field Strength (nT)</b>
	IGRF2010	4/15/2013	8.57	67.14	53,035

<b>Design</b>	Wellbore #1				
<b>Audit Notes:</b>					
<b>Version:</b>	1.0	<b>Phase:</b>	ACTUAL	<b>Tie On Depth:</b>	0.0
<b>Vertical Section:</b>	<b>Depth From (TVD) (ft)</b>	<b>+N/-S (ft)</b>	<b>+E/-W (ft)</b>	<b>Direction (°)</b>	
	0.0	0.0	0.0	316.56	

<b>Survey Program</b>	<b>Date</b>	4/29/2013			
<b>From (ft)</b>	<b>To (ft)</b>	<b>Survey (Wellbore)</b>	<b>Tool Name</b>	<b>Description</b>	
126.0	7,555.0	Survey #1 (Wellbore #1)	MWD	MWD - Standard	

<b>Survey</b>										
<b>Measured Depth (ft)</b>	<b>Inclination (°)</b>	<b>Azimuth (°)</b>	<b>Vertical Depth (ft)</b>	<b>+N/-S (ft)</b>	<b>+E/-W (ft)</b>	<b>Vertical Section (ft)</b>	<b>Dogleg Rate (°/100ft)</b>	<b>Build Rate (°/100ft)</b>	<b>Turn Rate (°/100ft)</b>	
0.0	0.00	0.00	0.0	0.0	0.0	0.0	0.00	0.00	0.00	
126.0	0.70	154.00	126.0	-0.7	0.3	-0.7	0.56	0.56	0.00	
244.0	0.40	73.00	244.0	-1.2	1.0	-1.6	0.64	-0.25	-68.64	
366.0	1.40	355.80	366.0	0.4	1.3	-0.6	1.12	0.82	-63.28	
487.0	1.10	255.10	487.0	1.6	0.1	1.1	1.60	-0.25	-83.22	
609.0	1.10	334.20	608.9	2.3	-1.5	2.7	1.15	0.00	64.84	
736.0	1.40	342.30	735.9	4.9	-2.5	5.3	0.27	0.24	6.38	
861.0	4.00	328.60	860.8	10.1	-5.3	10.9	2.13	2.08	-10.96	
986.0	6.50	310.00	985.2	18.3	-13.0	22.2	2.39	2.00	-14.88	
1,111.0	9.30	315.60	1,109.0	30.1	-25.4	39.4	2.32	2.24	4.48	
1,236.0	10.90	314.90	1,232.1	45.7	-40.9	61.3	1.28	1.28	-0.56	
1,361.0	12.30	315.70	1,354.5	63.5	-58.6	86.4	1.13	1.12	0.64	
1,486.0	13.90	314.10	1,476.3	83.5	-78.6	114.7	1.31	1.28	-1.28	

<b>Company:</b>	Bayswater Exploration & Production, LLC	<b>Local Co-ordinate Reference:</b>	Well Triangle 18-22
<b>Project:</b>	SEC.22-T7N-R65W	<b>TVD Reference:</b>	WELL @ 4848.0ft (Original Well Elev)
<b>Site:</b>	Triangle 4 Pad Sec.22-T7N-R65W	<b>MD Reference:</b>	WELL @ 4848.0ft (Original Well Elev)
<b>Well:</b>	Triangle 18-22	<b>North Reference:</b>	True
<b>Wellbore:</b>	Wellbore #1	<b>Survey Calculation Method:</b>	Minimum Curvature
<b>Design:</b>	Wellbore #1	<b>Database:</b>	Landmark

#### Survey

Measured Depth (ft)	Inclination (°)	Azimuth (°)	Vertical Depth (ft)	+N/-S (ft)	+E/-W (ft)	Vertical Section (ft)	Dogleg Rate (°/100ft)	Build Rate (°/100ft)	Turn Rate (°/100ft)	
1,611.0	13.70	314.00	1,597.7	104.3	-100.1	144.5	0.16	-0.16	-0.08	
1,735.0	14.50	318.40	1,717.9	126.1	-120.9	174.7	1.08	0.65	3.55	
1,860.0	15.70	319.20	1,838.6	150.6	-142.4	207.2	0.97	0.96	0.64	
1,985.0	16.10	316.80	1,958.8	176.0	-165.3	241.5	0.62	0.32	-1.92	
2,110.0	18.10	318.00	2,078.3	203.1	-190.2	278.2	1.62	1.60	0.96	
2,235.0	17.20	317.10	2,197.4	231.0	-215.7	316.1	0.75	-0.72	-0.72	
2,360.0	16.00	315.60	2,317.2	256.9	-240.4	351.8	1.02	-0.96	-1.20	
2,485.0	16.70	318.00	2,437.2	282.5	-264.4	387.0	0.78	0.56	1.92	
2,610.0	14.80	315.00	2,557.5	307.2	-287.7	420.9	1.65	-1.52	-2.40	
2,735.0	16.40	316.80	2,677.9	331.3	-311.1	454.5	1.34	1.28	1.44	
2,860.0	16.10	317.30	2,797.9	356.9	-335.0	489.5	0.26	-0.24	0.40	
2,985.0	16.50	318.40	2,917.8	383.0	-358.5	524.6	0.40	0.32	0.88	
3,110.0	18.00	317.70	3,037.2	410.5	-383.3	561.6	1.21	1.20	-0.56	
3,235.0	16.10	317.70	3,156.7	437.6	-407.9	598.3	1.52	-1.52	0.00	
3,359.0	17.30	319.20	3,275.5	464.3	-431.6	633.9	1.03	0.97	1.21	
3,484.0	16.40	320.30	3,395.1	491.9	-455.0	670.0	0.76	-0.72	0.88	
3,609.0	15.20	315.20	3,515.4	517.1	-477.8	704.0	1.47	-0.96	-4.08	
3,734.0	14.90	318.50	3,636.1	540.8	-500.0	736.5	0.73	-0.24	2.64	
3,859.0	15.20	318.20	3,756.8	565.1	-521.6	768.9	0.25	0.24	-0.24	
3,984.0	16.00	320.30	3,877.2	590.5	-543.5	802.5	0.78	0.64	1.68	
4,109.0	17.10	318.00	3,997.0	617.5	-566.8	838.1	1.02	0.88	-1.84	
4,234.0	18.40	318.50	4,116.1	645.9	-592.2	876.1	1.05	1.04	0.40	
4,359.0	18.00	318.00	4,234.8	675.0	-618.2	915.2	0.34	-0.32	-0.40	
4,484.0	16.40	318.00	4,354.2	702.5	-642.9	952.1	1.28	-1.28	0.00	
4,609.0	14.50	319.10	4,474.7	727.4	-665.0	985.4	1.54	-1.52	0.88	
4,734.0	13.70	318.40	4,596.0	750.3	-685.0	1,015.8	0.65	-0.64	-0.56	
4,858.0	15.00	316.40	4,716.1	772.9	-705.8	1,046.6	1.12	1.05	-1.61	
4,983.0	14.60	313.80	4,836.9	795.5	-728.4	1,078.5	0.62	-0.32	-2.08	
5,108.0	15.70	312.60	4,957.6	817.9	-752.2	1,111.1	0.92	0.88	-0.96	
5,233.0	14.20	314.00	5,078.4	840.0	-775.7	1,143.3	1.23	-1.20	1.12	
5,358.0	13.00	313.80	5,199.8	860.4	-796.8	1,172.6	0.96	-0.96	-0.16	
5,483.0	9.80	315.20	5,322.4	877.7	-814.5	1,197.3	2.57	-2.56	1.12	
5,608.0	7.60	310.50	5,445.9	890.6	-828.3	1,216.2	1.85	-1.76	-3.76	
5,733.0	6.20	313.10	5,570.0	900.6	-839.5	1,231.1	1.15	-1.12	2.08	
5,858.0	4.50	318.70	5,694.5	908.9	-847.7	1,242.8	1.42	-1.36	4.48	
5,963.7	2.97	311.56	5,800.0	913.8	-852.4	1,249.6	1.51	-1.45	-6.75	
<b>TARGET BHL 875'FNL, 1525'FWL</b>										
5,983.0	2.70	309.40	5,819.2	914.4	-853.2	1,250.6	1.51	-1.40	-11.22	
6,108.0	1.70	286.70	5,944.1	916.8	-857.2	1,255.1	1.05	-0.80	-18.16	
6,233.0	1.00	237.20	6,069.1	916.8	-859.9	1,256.9	1.04	-0.56	-39.60	
6,358.0	0.90	230.10	6,194.1	915.5	-861.6	1,257.2	0.12	-0.08	-5.68	
6,482.0	1.00	203.60	6,318.1	913.9	-862.8	1,256.8	0.36	0.08	-21.37	
6,607.0	0.70	181.30	6,443.0	912.2	-863.2	1,255.9	0.35	-0.24	-17.84	
6,732.0	0.50	186.20	6,568.0	910.9	-863.3	1,255.0	0.17	-0.16	3.92	
6,857.0	0.50	139.20	6,693.0	909.9	-863.0	1,254.1	0.32	0.00	-37.60	
6,982.0	0.80	128.00	6,818.0	908.9	-862.0	1,252.7	0.26	0.24	-8.96	
7,094.7	0.26	116.97	6,930.8	908.3	-861.1	1,251.6	0.49	-0.48	-9.78	
<b>LEGAL BOX 800' X 800' 1091'FNL &amp; 1334'FWL</b>										
7,095.0	0.26	116.89	6,931.0	908.3	-861.1	1,251.6	0.49	-0.47	-30.44	
<b>TARGET CIRCLE 875'FNL &amp; 1525'FWL</b>										
7,107.0	0.20	112.20	6,943.0	908.3	-861.1	1,251.6	0.49	-0.46	-39.13	
7,232.0	0.20	172.80	7,068.0	908.0	-860.8	1,251.2	0.16	0.00	48.48	
7,357.0	0.30	104.60	7,193.0	907.7	-860.5	1,250.8	0.23	0.08	-54.56	
7,513.0	0.40	85.10	7,349.0	907.7	-859.6	1,250.1	0.10	0.06	-12.50	

<b>Company:</b>	Bayswater Exploration & Production, LLC	<b>Local Co-ordinate Reference:</b>	Well Triangle 18-22
<b>Project:</b>	SEC.22-T7N-R65W	<b>TVD Reference:</b>	WELL @ 4848.0ft (Original Well Elev)
<b>Site:</b>	Triangle 4 Pad Sec.22-T7N-R65W	<b>MD Reference:</b>	WELL @ 4848.0ft (Original Well Elev)
<b>Well:</b>	Triangle 18-22	<b>North Reference:</b>	True
<b>Wellbore:</b>	Wellbore #1	<b>Survey Calculation Method:</b>	Minimum Curvature
<b>Design:</b>	Wellbore #1	<b>Database:</b>	Landmark

Survey									
Measured Depth (ft)	Inclination (°)	Azimuth (°)	Vertical Depth (ft)	+N/-S (ft)	+E/-W (ft)	Vertical Section (ft)	Dogleg Rate (°/100ft)	Build Rate (°/100ft)	Turn Rate (°/100ft)
7,555.0	0.40	85.10	7,391.0	907.7	-859.3	1,249.9	0.00	0.00	0.00

Checked By: \_\_\_\_\_ Approved By: \_\_\_\_\_ Date: \_\_\_\_\_