

LOG created using L PLOT VH Version 3.0, May 18, 2013, Copyright (C) 1999-2009 Pason Systems Corp.

OPERATOR:	NOBLE ENERGY INC.
WELL:	FEUERSTEIN I28-63-1HN
LOCATION:	SEC28, T6N, R66W
COUNTY:	WELD
STATE:	COLORADO
SPOT:	1721' FSL, 311' FWL
ELEVATION:	GE: 4724', KB: 7440'
FIELD:	WATTENBERG
SPUD DATE:	05/07/2013
TD DATE:	05/17/2013
DATES LOGGED:	05/09/3013 - 05/17/2013
DEPTHS LOGGED:	1000' - 11288'
LOGGERS:	CHRIS WILLATT, CHRIS VENTURINO
DRILLING FLUID:	LSND
DRILLING RIG:	PRECISION 829
API:	05-123-36661
LOG TYPE:	VERTICLE
SCALE:	1:240 (5 inches per 100 feet)
REMARKS:	WELLSITE GEOLOGICAL SERVICES PROVIDED BY COLUMBINE LOGGING INC.

**LOG CONTINUES ON FILE: Feuerstein I28-63-1HN HORIZ.lplot**

## LITHOLOGIES



Sandstone



Shale



Shaly Sandstone



### Shaly Siltstone



Silty Shale

## ENGINEERING SYMBOLS



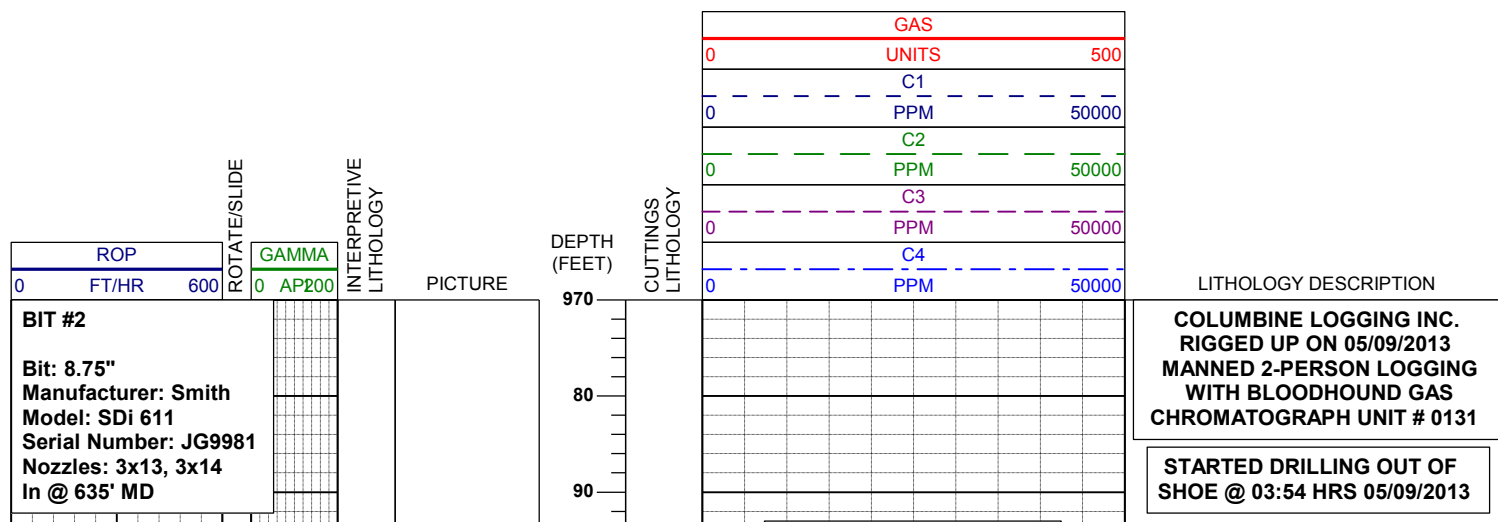
## Connection

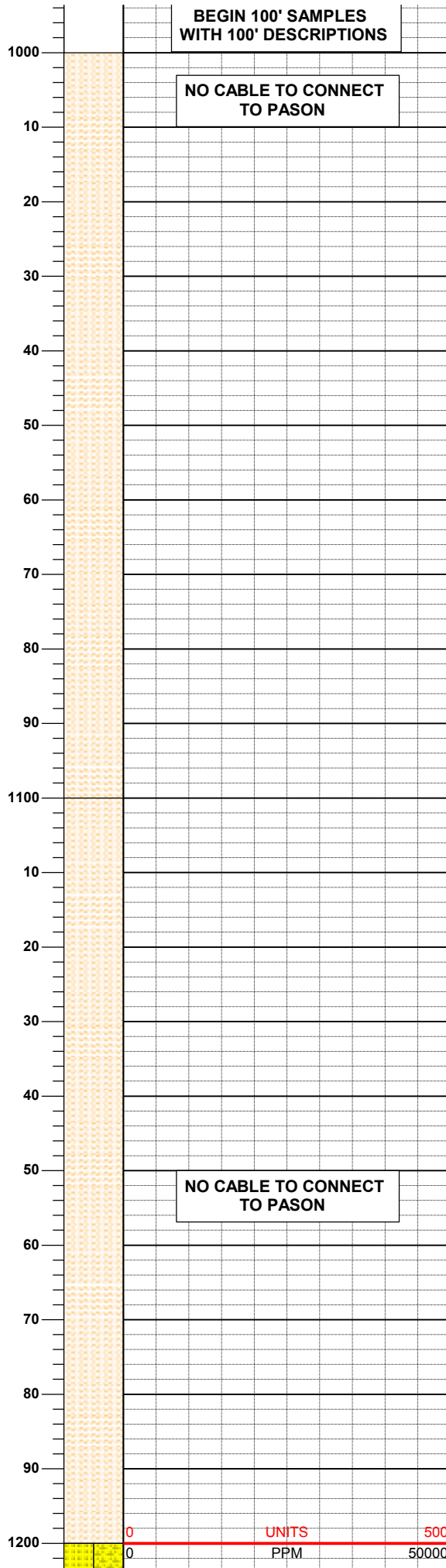
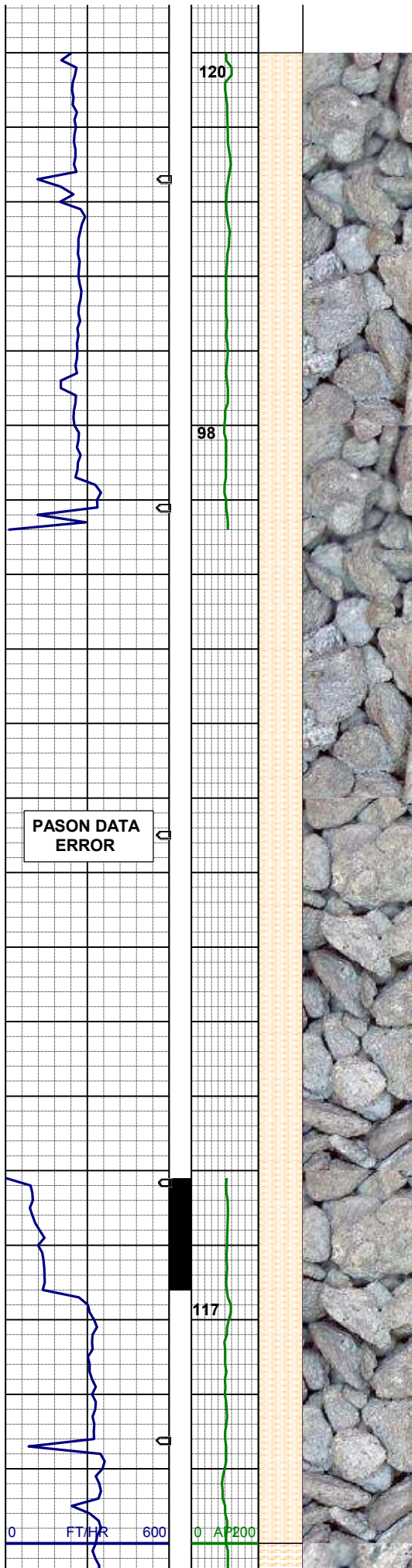


Connection Gas



## Midnight Depth





BEGIN 100' SAMPLES  
WITH 100' DESCRIPTIONS

NO CABLE TO CONNECT  
TO PASON

100% SHYSLTST: ltgy, sft- fri, sbbiky  
- sl sbply, slty tex, tr biot incl, tr glau,  
grdg - shyss

MD 1100'  
INC 0.26°  
AZI 20.07°  
TVD 1100.0'

WT8.5 / VIS 27

100% SHYSLTST: ltgy, sft- fri, sbbiky  
- sl sbply, slty tex, tr biot incl, tr glau,  
grdg - shyss

NO CABLE TO CONNECT  
TO PASON

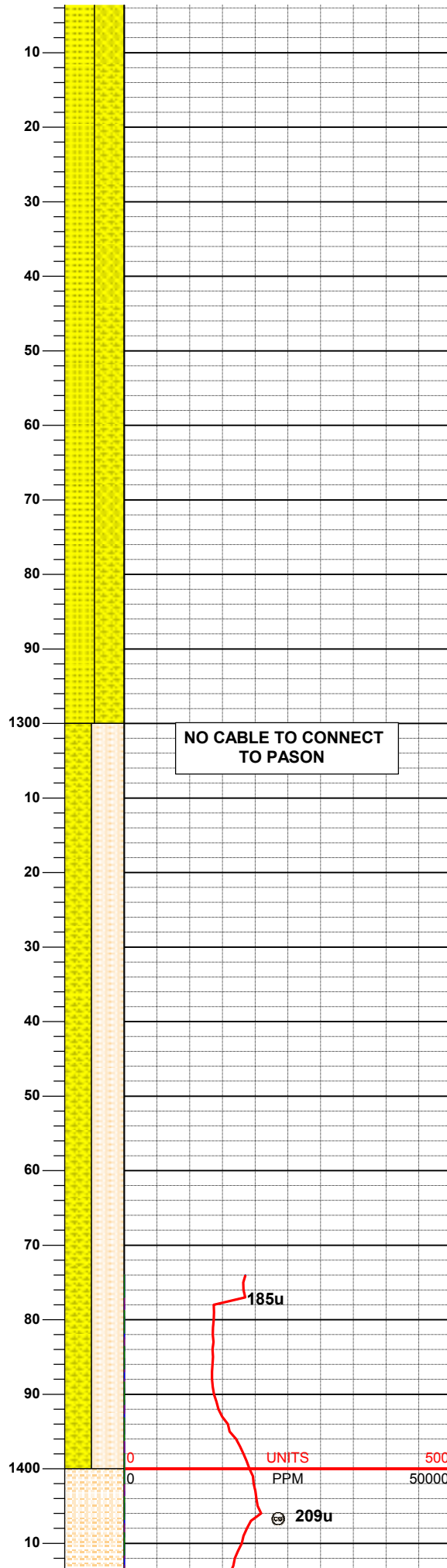
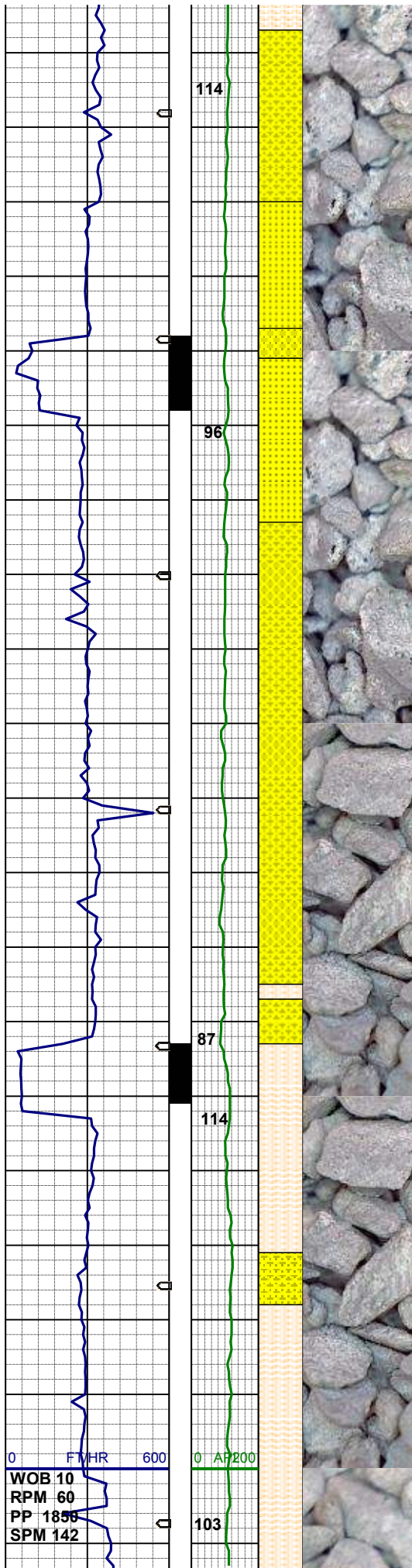
MD 1197'  
INC 2.55°  
AZI 208.83°  
TVD 1197.0'

UNITS

PPM

500

50000



50% SHYSS: vlt-mgy, trns- op, vf- ml, sbrndd, p-mod srt, sft -firm, arg mtx, p -mod cmt, sl calc, mod glau, tr biot  
50% SS: wh-mgy, clr- trns, f-mgr, mod srt, fri, p cmt, arg- sil mtx, sl calc, mod glau, tr biot

MD 1291'  
INC 4.84°  
AZI 214.90°  
TVD 1290.8'

NO CABLE TO CONNECT TO PASON

55% SHYSLTST: ltgy, sft- fri, sbbky- sl sbply, slty tex, tr biot incl, tr glau, grdg - shyss  
45% SHYSS: vlt-mgy, occ trns- op, vf - ml, sbrndd, p-mod srt, sft -firm, arg mtx, p-mod cmt, sl calc, mod glau, tr biot

MD 1386'  
INC 6.60°  
AZI 205.70°  
TVD 1385.3'

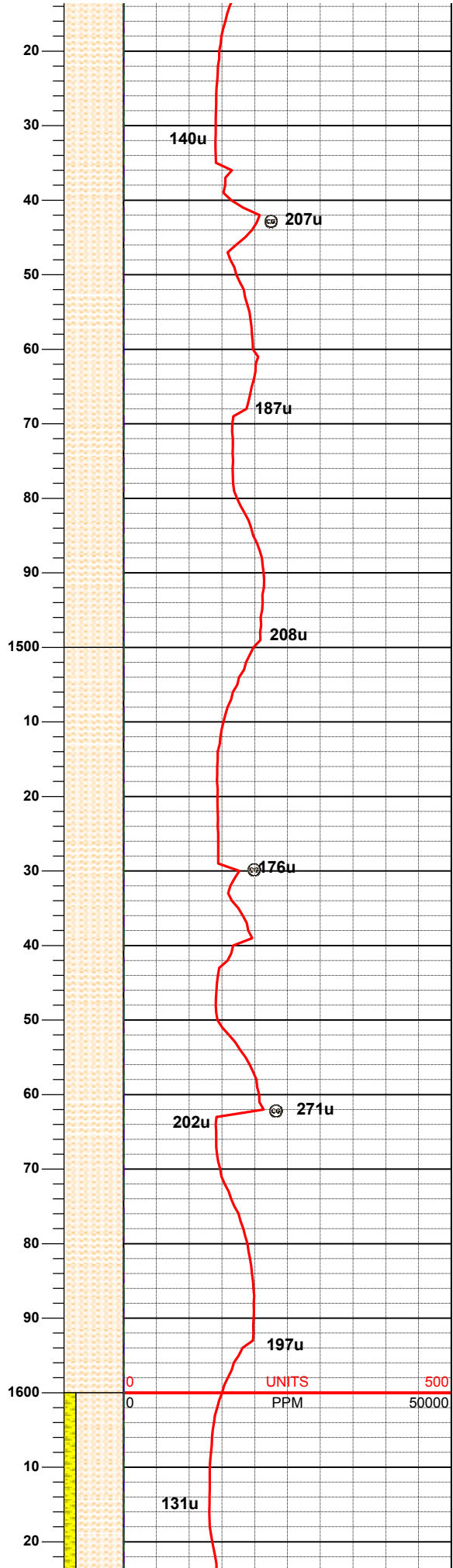
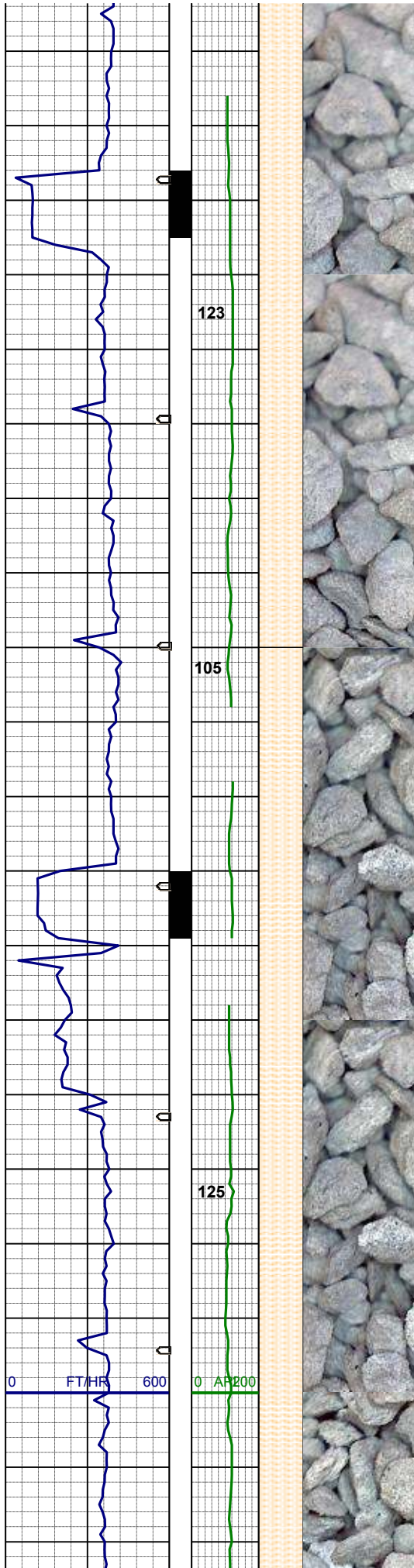
185u

209u

UNITS

PPM



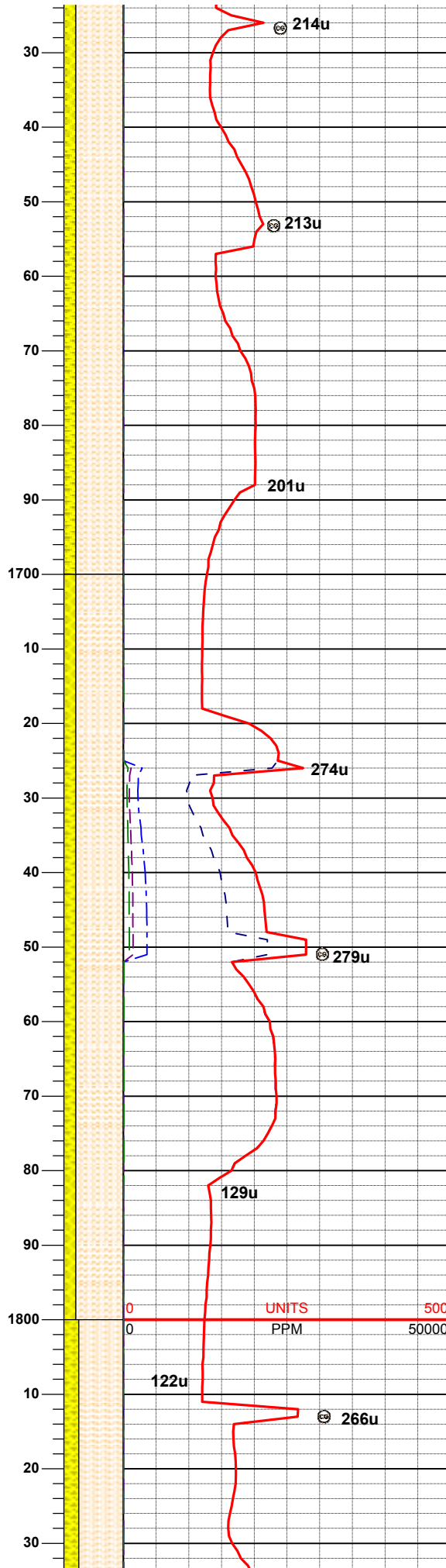
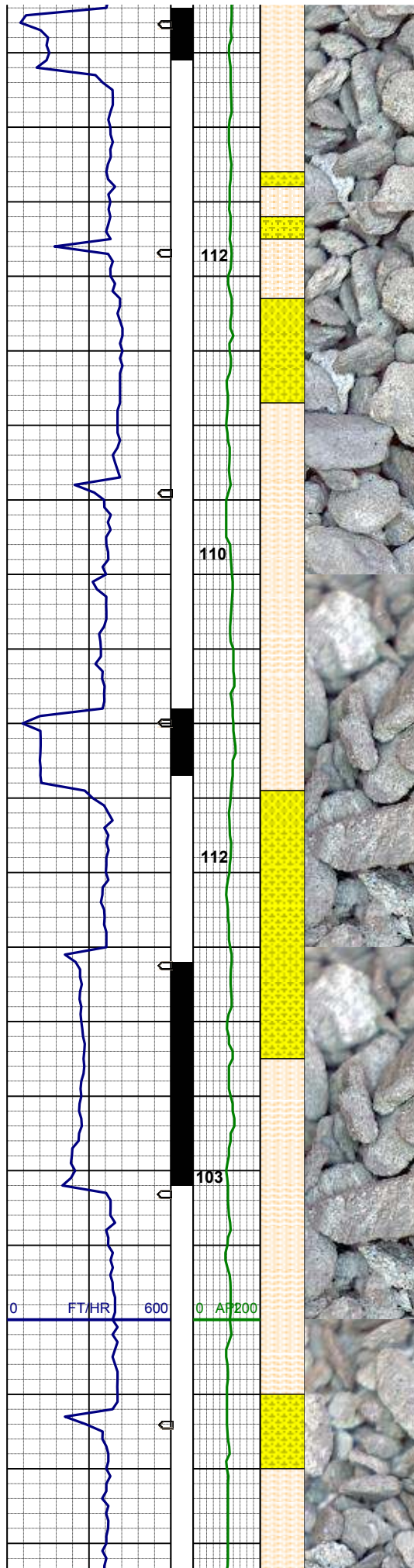


100% SHYSLTST: ltgy, sft- fri, sbbiky  
- sl sbpity, slty tex, tr biot incl, tr glau,  
grdg - shyss

MD 1481'  
INC 8.60°  
AZI 204.58°  
TVD 1479.5'

100% SHYSLTST: ltgy, sft- fri, sbbiky  
- sl sbpity, slty tex, tr biot incl, tr glau,  
grdg - shyss

MD 1575'  
INC 11.21°  
AZI 200.69°  
TVD 1572.0'



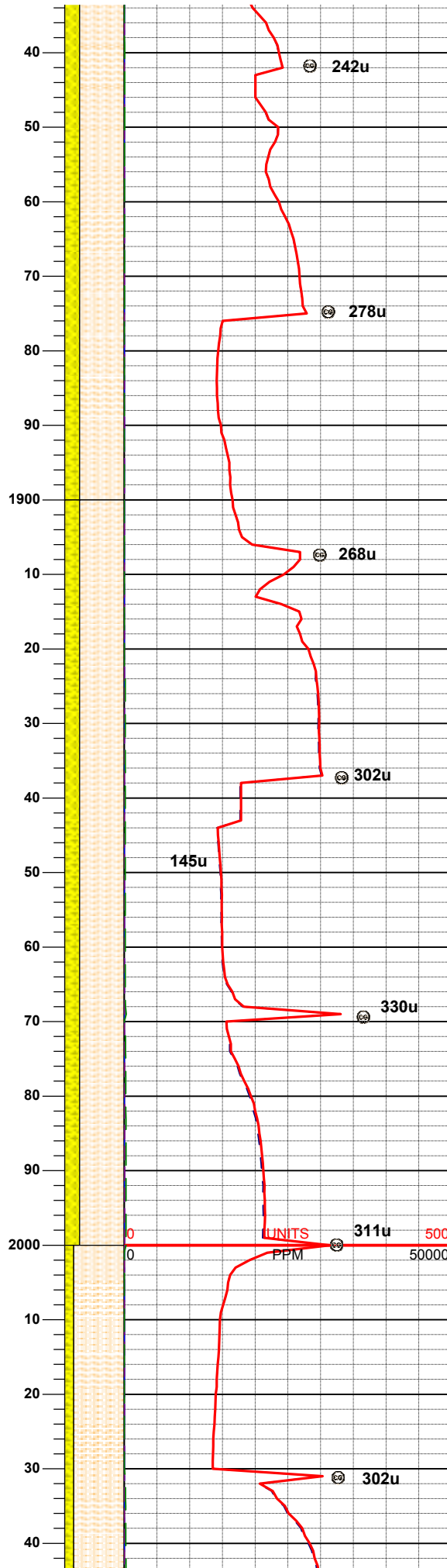
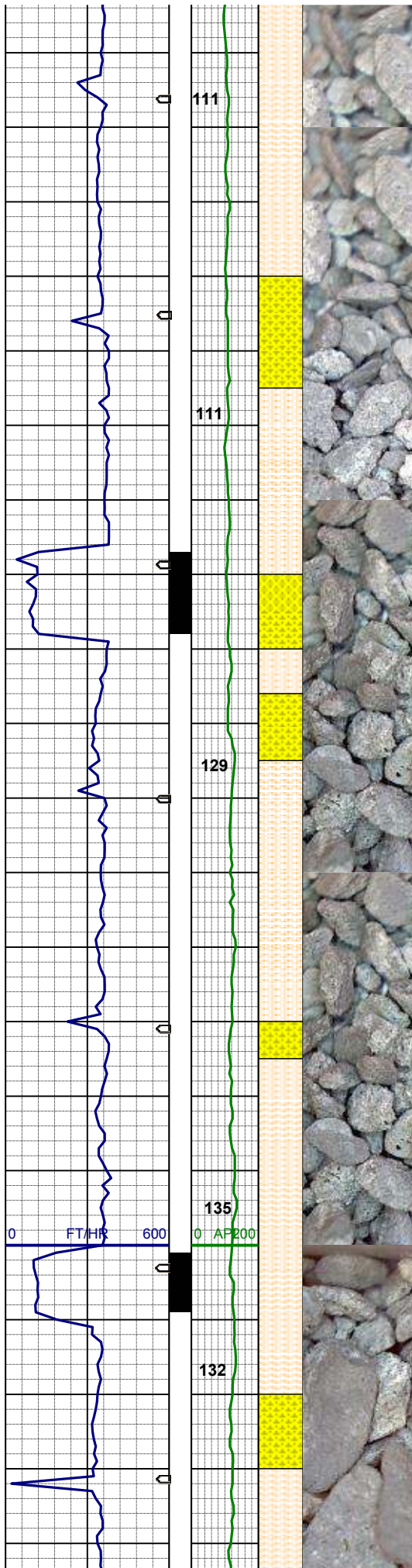
80% SHYSLTST: ltgy, sft- fri, sbblky-  
sl sbply, slty tex, tr biot incl, tr glau,  
grdg - shyss  
20% SHYSS: vlt-mgy, occ trns- op, vf  
- fgr, sbrndd, p-mod srt, sft -firm, arg  
mtx, p-mod cmt, sl calc, mod glau, tr  
biot

MD 1669'  
INC 12.69°  
AZI 192.03°  
TVD 1664.0'

80% SHYSLTST: ltgy, sft- fri, sbblky-  
sl sbply, slty tex, tr biot incl, tr glau,  
grdg - shyss  
20% SHYSS: mgy, occ trns- op, vf-  
fgr, sbrndd, p-mod srt, sft -firm, arg  
mtx, p-mod cmt, sl calc, mod glau, tr  
biot

MD 1763'  
INC 15.41°  
AZI 192.96°  
TVD 1755.2'





75% SHYSLTST: ltgy - mgy, sft- fri, sbblky- sl sbply, slty tex, tr biot incl, tr glau, grdg - shyss  
25% SHYSS: ltgy - mgy, occ trns- op, vf- fgr, sbrnnd, p-mod srt, sft -firm, arg mtx, p-mod cmt, sl calc, mod glau, tr biot

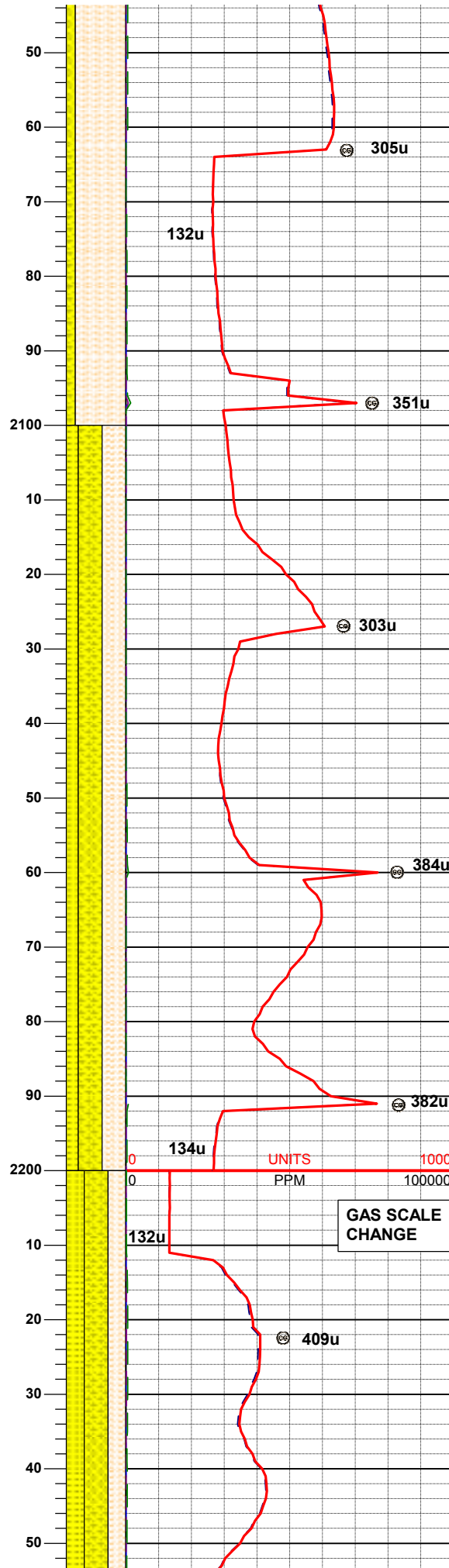
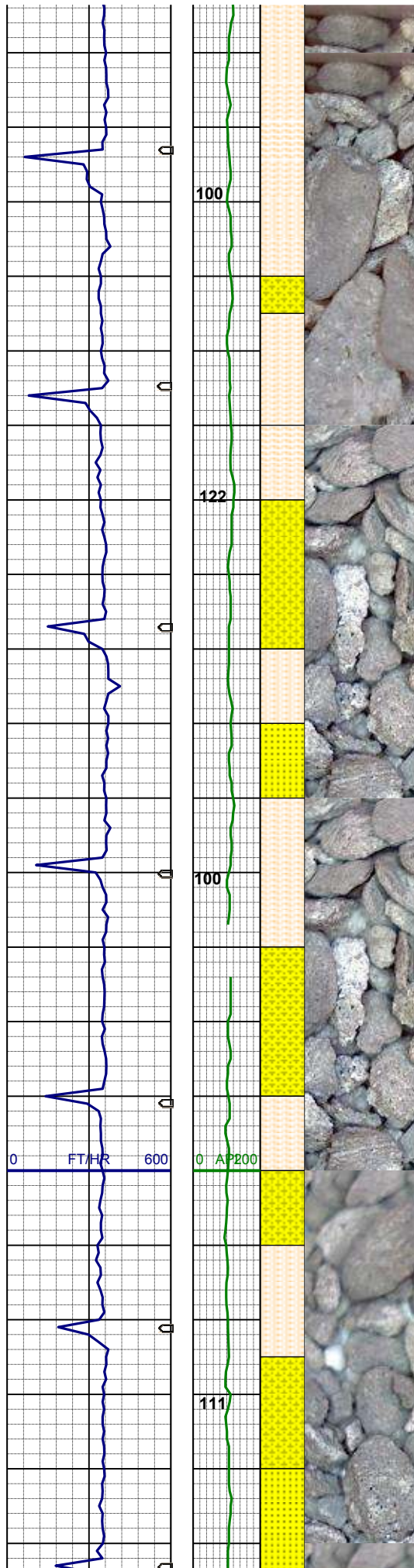
MD 1857'  
INC 16.38°  
AZI 190.85°  
TVD 1845.6'

WT8.4 / VIS 26

75% SHYSLTST: ltgy - mgy, sft- fri, sbblky- sl sbply, slty tex, tr biot incl, tr glau, grdg - shyss  
25% SHYSS: ltgy - mgy, occ trns- op, vf- fgr, sbrnnd, p-mod srt, sft -firm, arg mtx, p-mod cmt, sl calc, mod glau, tr biot

MD 1952'  
INC 14.83°  
AZI 194.06°  
TVD 1937.1'

MD 2046'  
INC 14.50°  
AZI 201.41°  
TVD 2028.0'



85% SHYSLTST: ltgy - mgy, stt- fri, sbbkly- sl sbpity, slty tex, tr biot incl, tr glau, grdg - shyss  
15% SHYSS: ltgy - mgy, occ trns- op, vf- fgr, sbrnnd, p-mod srt, sft -firm, arg mtz, p-mod cmt, sl calc, mod glau, tr biot

WT8.4/ VIS 28

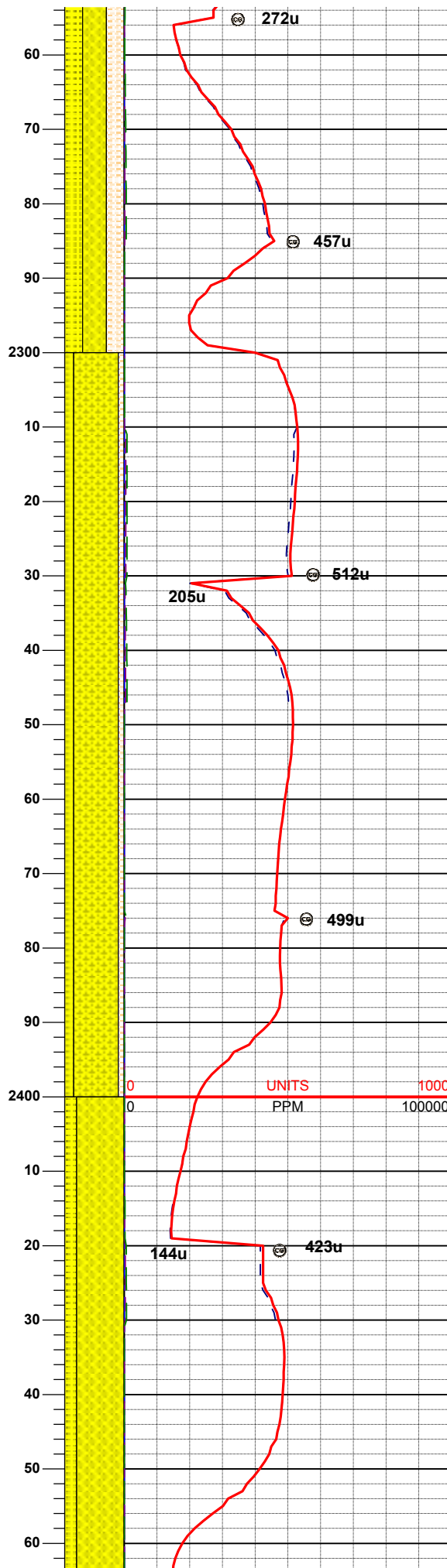
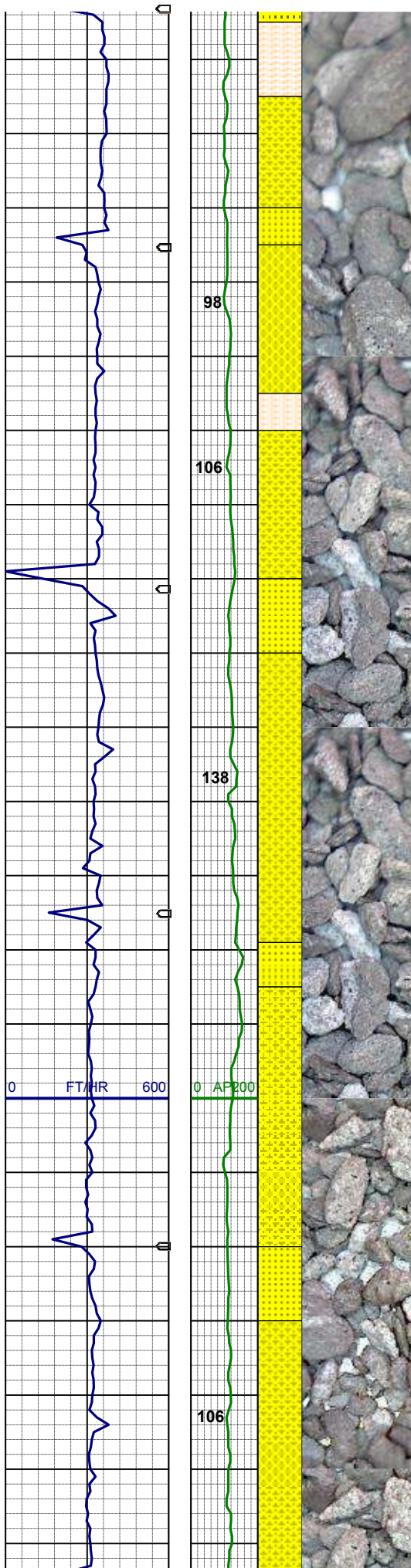
MD 2141'  
INC 15.14°  
AZI 200.67°  
TVD 2119.9'

40% SHYSLTST: ltgy - mgy, sft- fri, sbbkly- sl sbpity, slty tex, tr biot incl, tr glau, grdg - shyss  
40% SHYSS: ltgy - mgy, occ trns- op, vf- fgr, sbrnnd, p-mod srt, sft -firm, arg mtz, p-mod cmt, sl calc, mod glau, tr biot  
20% SS: wh-mgy, clr- trns- f-migr, mod srt, fri, p cmt, sil mtz, sl calc, occ glau

MD 2235'  
INC 15.51°  
AZI 200.45°  
TVD 2210.5'

40% SHYSS: ltgy - mgy, occ trns- op, vf- fgr, sbrnnd, p-mod srt, sft -firm, arg mtz, p-mod cmt, sl calc, mod glau, tr biot  
30% SHYSLTST: ltgy - mgy, sft- fri, sbbkly- sl sbpity, slty tex, tr biot incl, tr





glau, grdg - shyss  
30% SS: wh-mgy, clr- trnsf, f-migr,  
mod srt, fri, p cmt, sil mtz, sl calc, occ  
glau

WT8.4 / VIS 27

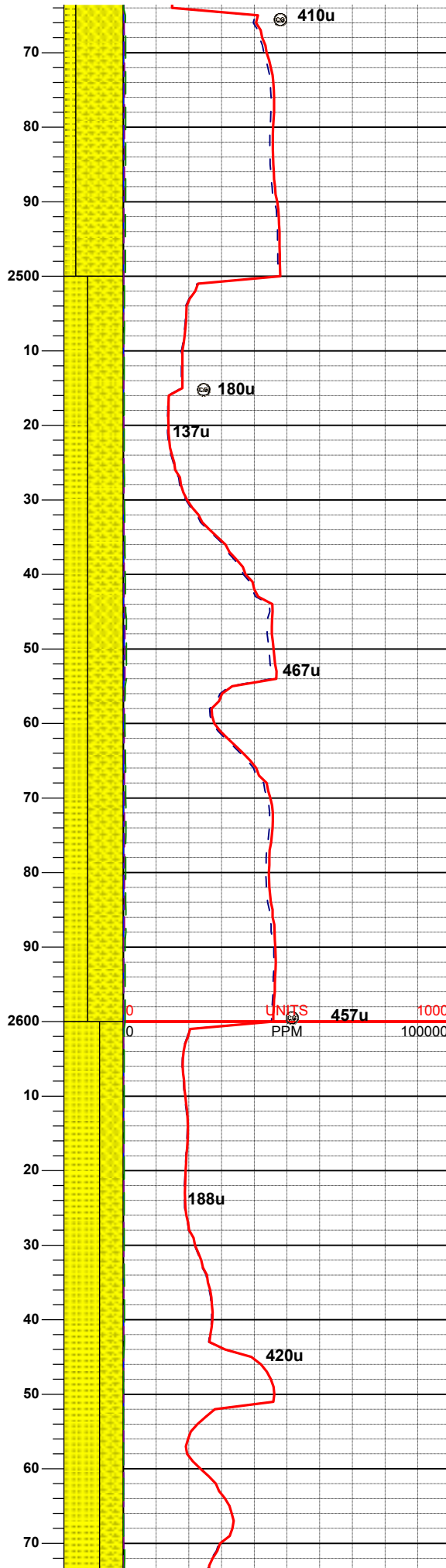
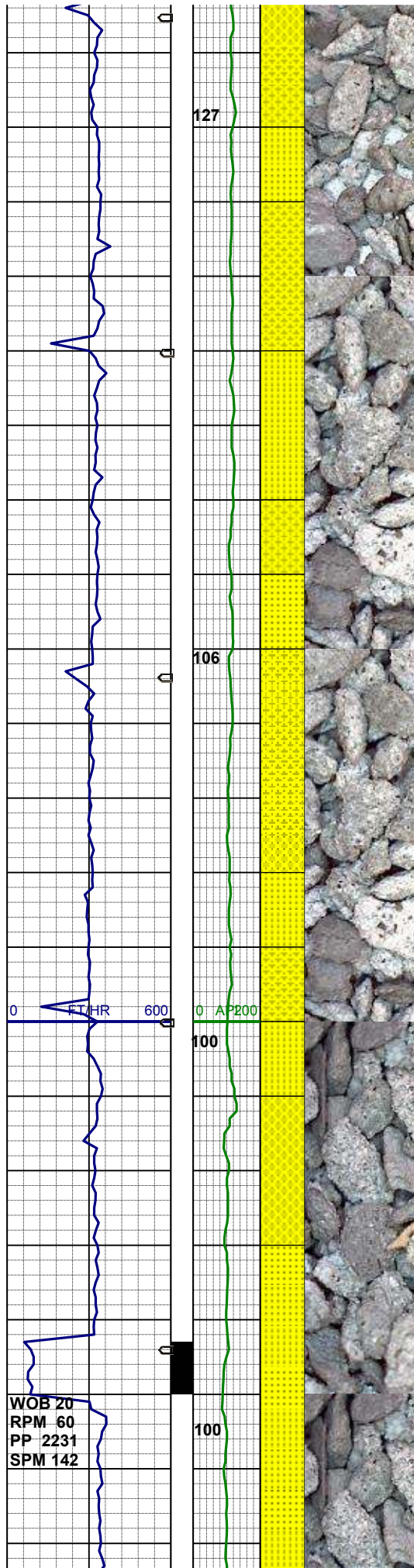
MD 2325'  
INC 15.19°  
AZI 200.59°  
TVD 2297.3'

75% SHYSS: ltgy - mgy, occ trnsf- op,  
vf- fgr, sbrnrd, p-mod srt, sft -firm, arg  
mtz, p-mod cmt, sl calc, mod glau, tr  
biot  
15% SS: wh-mgy, clr- trnsf, f-migr,  
mod srt, fri, p cmt, sil mtz, sl calc, occ  
glau  
10% SHYSLTST: ltgy - mgy, sft- fri,  
sbbky- sl sbply, slty tex, tr biot incl, tr  
glau, grdg - shyss

MD 2414'  
INC 15.21°  
AZI 198.92°  
TVD 2383.2'

80% SHYSS: ltgy - mgy, occ trnsf- op,  
vf- fgr, sbrnrd, p-mod srt, sft -firm, arg  
mtz, p-mod cmt, sl calc, mod glau, tr  
biot  
20% SS: wh-mgy, clr- trnsf, f-migr,  
mod srt, fri, p cmt, sil mtz, sl calc, occ  
glau





MD 2504'  
INC 15.34°  
AZI 201.22°  
TVD 2470.0'

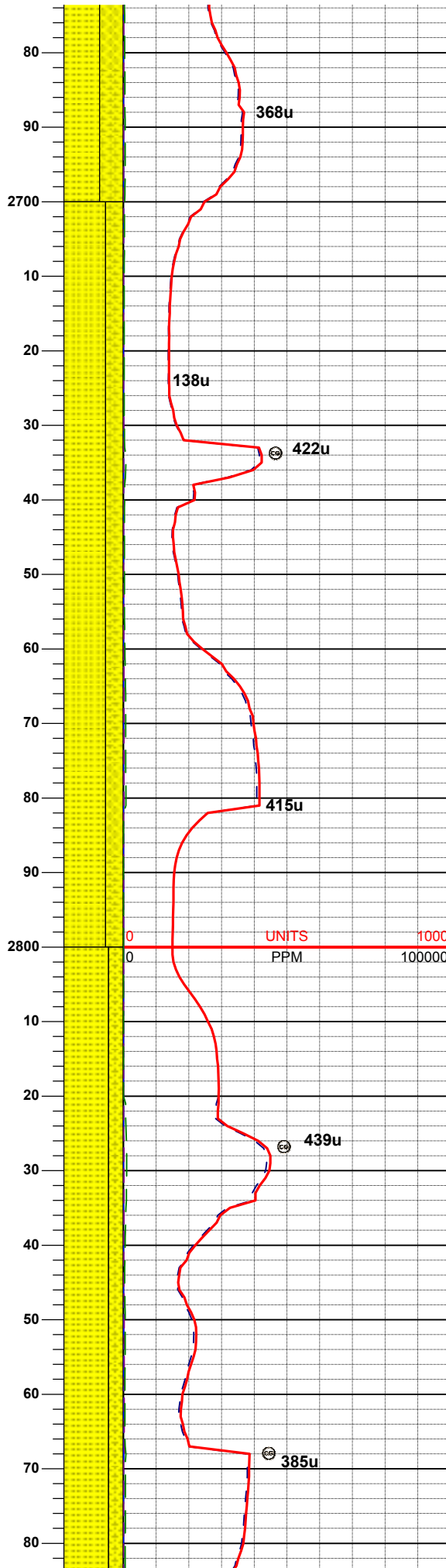
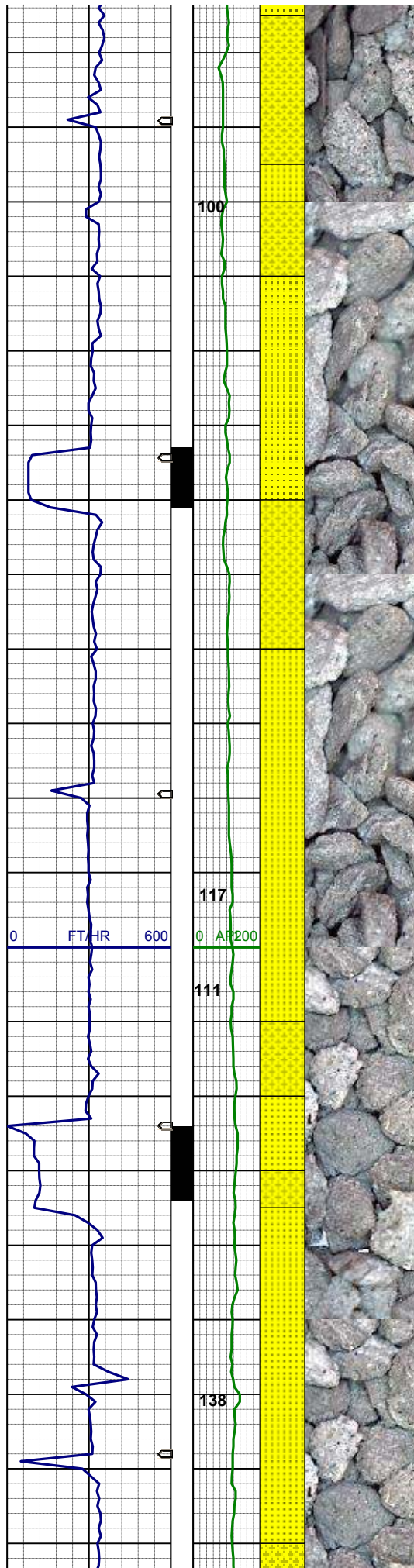
60% SHYSS: ltgy - mgy, occ trnsl- op, vf- fgr, sbrnidd, p-mod srt, sft -firm, arg mtz, p-mod cmt, sl calc, mod glau, tr biot  
40% SS: wh-mgy, clr- trnsl, f-migr, mod srt, fri, p cmt, sil mtz, sl calc, occ glau

**PIERRE  
LOGGER TOP  
MD 2561' TVD 2524'**

MD 2593'  
INC 15.78°  
AZI 200.59°  
TVD 2557.8'

**WT8.4 / VIS 27**

60% SS: wh-mgy, clr- trnsl, f-migr, mod srt, fri, p cmt, sil mtz, sl calc, occ glau  
40% SHYSS: ltgy - mgy, occ trnsl- op, vf- fgr, sbrnidd, p-mod srt, sft -firm, arg mtz, p-mod cmt, sl calc, mod glau, tr biot



MD 2683'  
INC 17.71°  
AZI 197.42°  
TVD 2642.0'

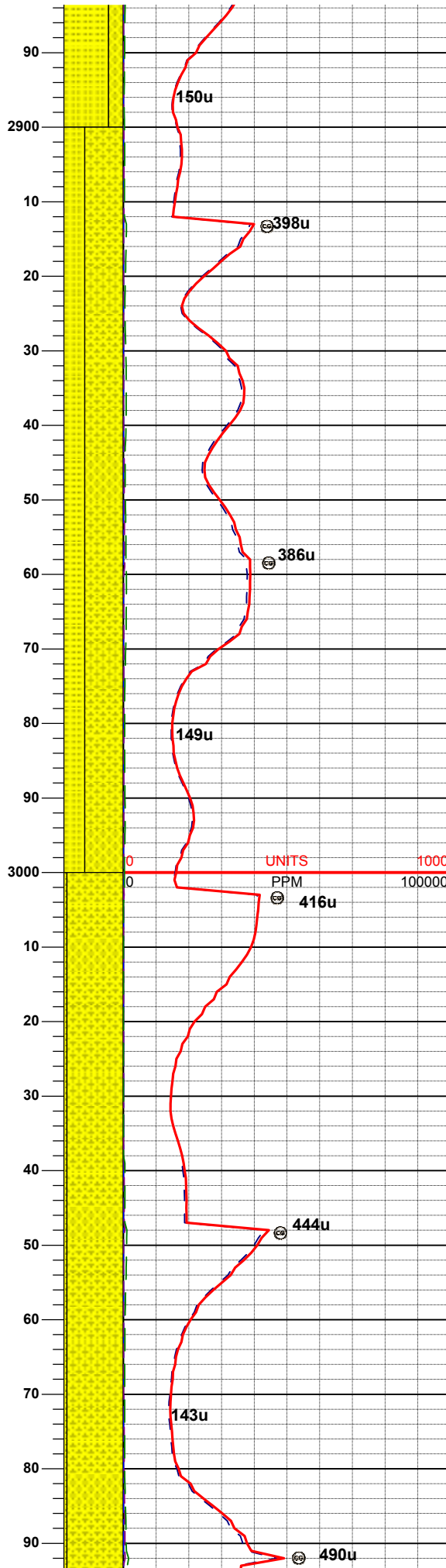
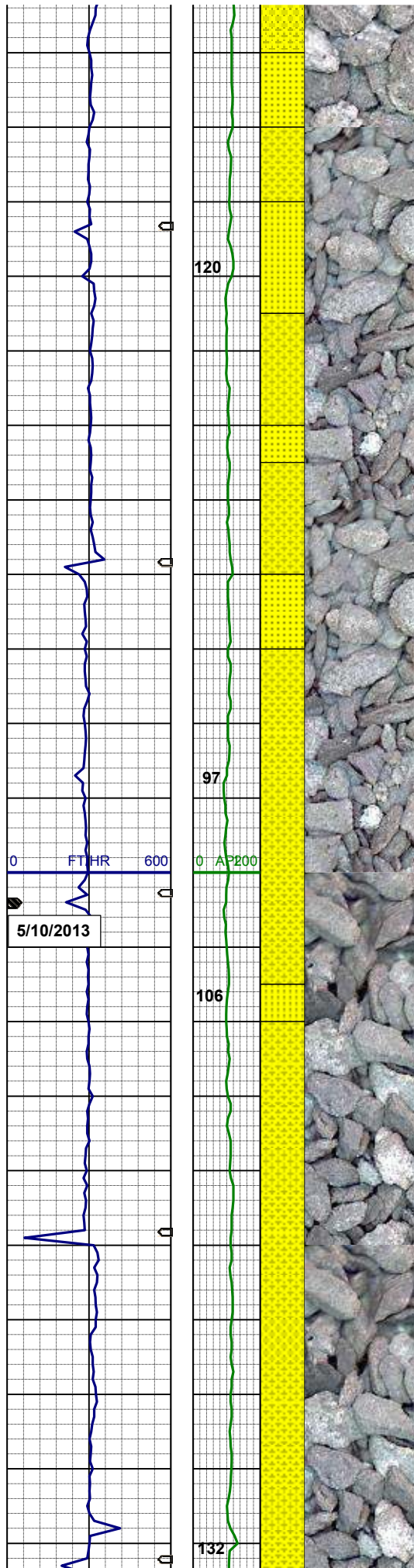
70% SS: wh-mgy, clr- trnsi, f-migr,  
mod srt, fri, p cmt, sil mtz, sl calc, occ  
glau  
30% SHYSS: ltgy - mgy, occ trnsi- op,  
vf- fgr, sbrmdd, p-mod srt, sft -firm, arg  
mtz, p-mod cmt, sl calc, mod glau, tr  
biot

MD 2773'  
INC 16.93°  
AZI 198.94°  
TVD 2727.9'

75% SS: wh-mgy, clr- trnsi, f-migr,  
mod srt, fri, p cmt, sil mtz, sl calc, occ  
glau  
25% SHYSS: ltgy - mgy, occ trnsi- op,  
vf- fgr, sbrmdd, p-mod srt, sft -firm, arg  
mtz, p-mod cmt, sl calc, mod glau, tr  
biot

MD 2862'  
INC 15.04°  
AZI 192.79°  
TVD 2813.4'





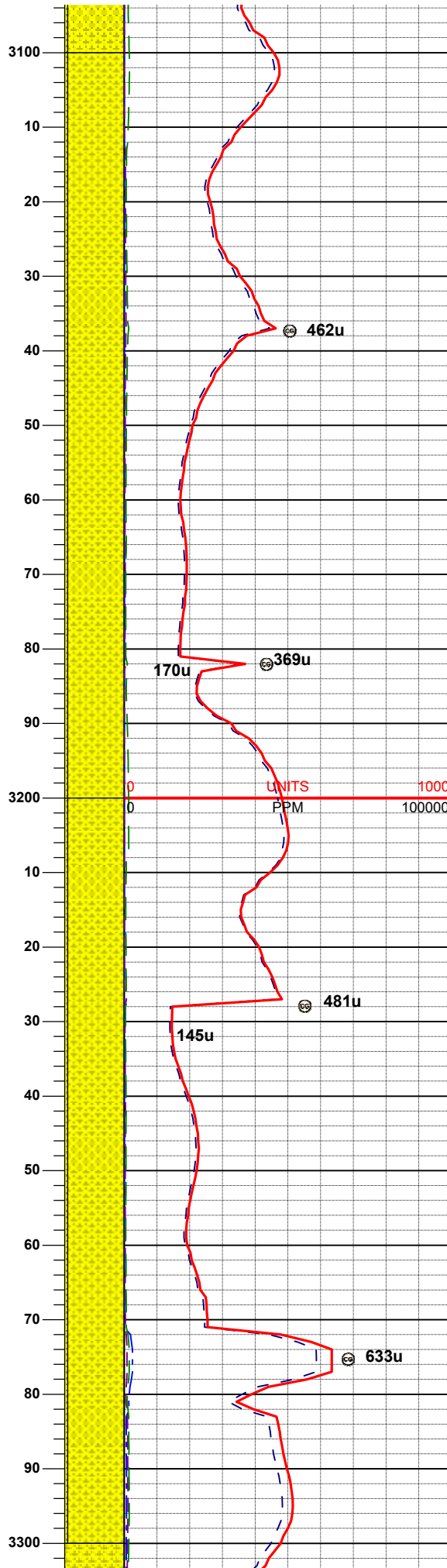
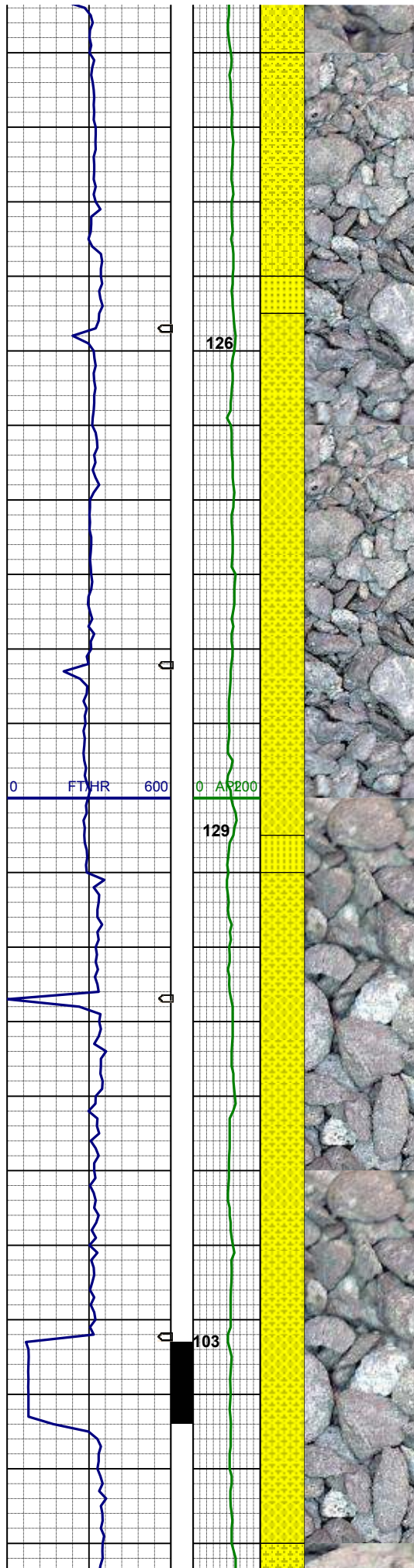
65% SHYSS: mgy, vf- fgr, sbrnnd, p-  
mod srt, sft -firm, arg mtX, p-mod cmt,  
sl calc, mod glau, tr biot  
35% SS: wh-mgy, clr- trnsI, f-mIgr,  
mod srt, fri, p cmt, sil mtX, sl calc, occ  
glau

MD 2952'  
INC 15.11°  
AZI 192.38°  
TVD 2900.3'

95% SHYSS: mgy, vf- fgr, sbrnnd, p-  
mod srt, sft -firm, arg mtX, p-mod cmt,  
sl calc, mod glau, tr biot  
5% SS: wh-mgy, clr- trnsI, f-mIgr, mod  
srt, fri, p cmt, sil mtX, sl calc, occ glau

MD 3041'  
INC 15.83°  
AZI 193.90°  
TVD 2986.1'



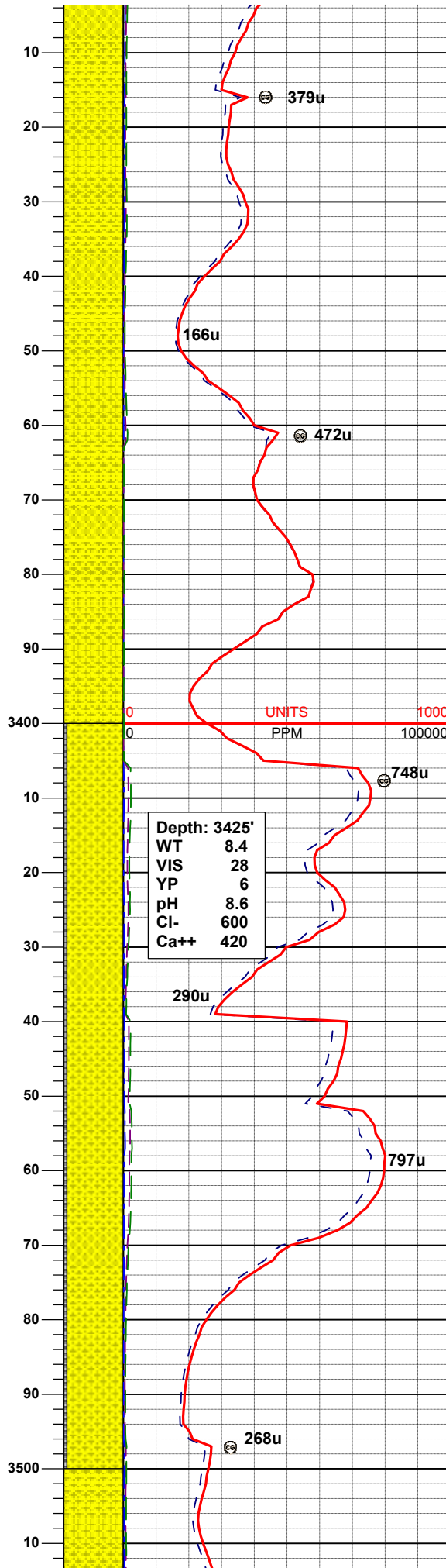
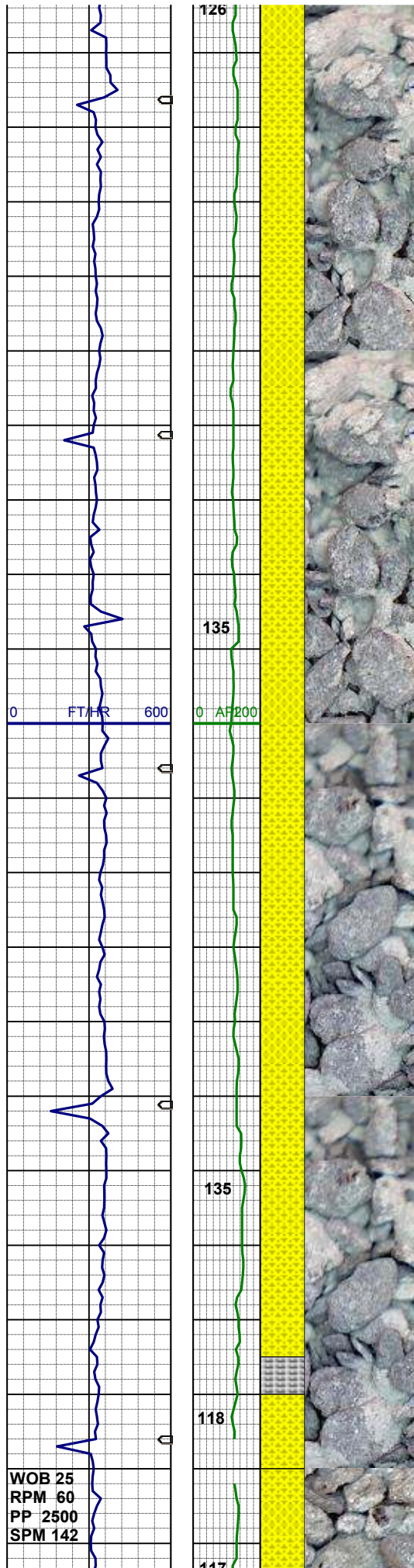


MD 3131'  
INC 14.93°  
AZI 196.30°  
TVD 3072.9'

95% SHYSS: mgy, vf- fgr, sbrnnd, p-  
mod srt, sft -firm, arg mtx, p-mod cmt,  
sl calc, mod glau  
5% SS: wh-mgy, clr- trnsl, f-migr, mod  
srt, fri, p cmt, sil mtx, sl calc, occ glau

MD 3221'  
INC 14.56°  
AZI 196.02°  
TVD 3159.9'

95% SHYSS: mgy, vf- fgr, sbrnnd, p-  
mod srt, sft -firm, arg mtx, p-mod cmt,  
sl calc, mod glau  
5% SS: wh-mgy, clr- trnsl, f-migr, mod  
srt, fri, p cmt, sil mtx, sl calc, occ glau



MD 3310'  
INC 15.90°  
AZI 198.99°  
TVD 3245.8'

100% SHYSS: mgy, vf- fgr, sbrnnd, p-mod srt, sft -firm, arg mtz, p-mod cmt, sl calc, mod glau, tr pyr

MD 3400'  
INC 15.27°  
AZI 200.20°  
TVD 3332.5'

WT8.4 / VIS 28

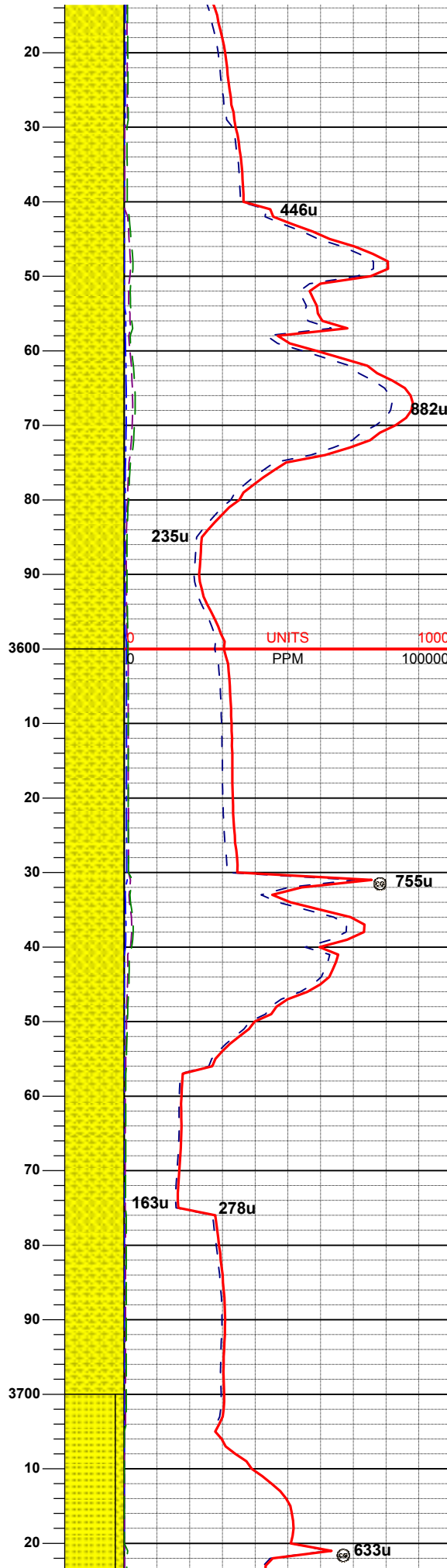
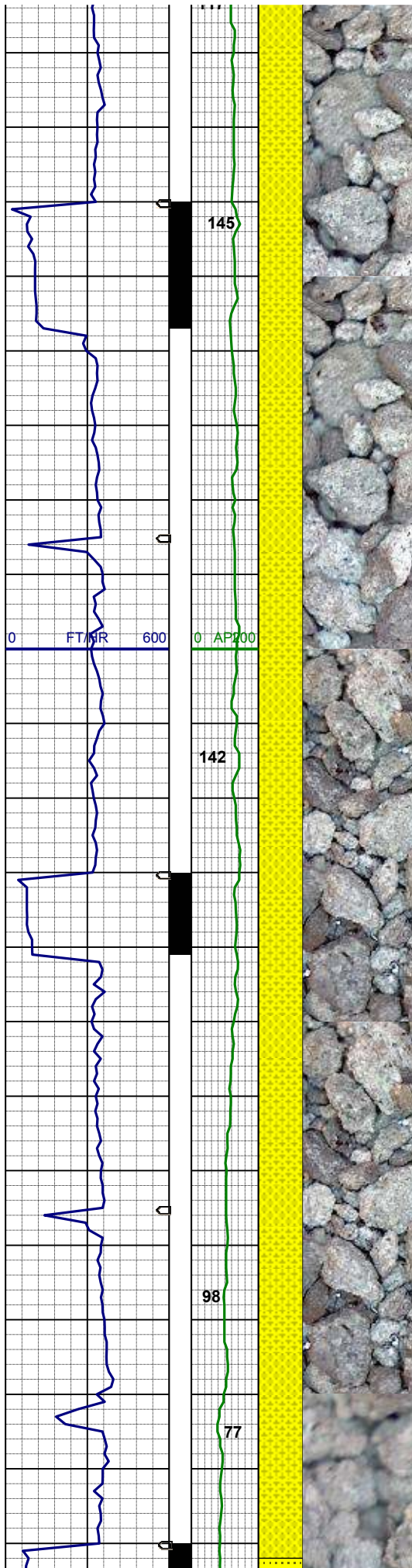
95% SHYSS: mgy, vf- fgr, sbrnnd, p-mod srt, sft -firm, arg mtz, p-mod cmt, sl calc, mod glau, tr pyr  
5% SLTYSH: mgy- dkgy, sft- mod firm, sbrnnd- sbply, occ sbply, shy-sly tex, ts ss

MD 3489'  
INC 13.64°  
AZI 200.02°  
TVD 3418.7'

Depth: 3425'  
WT 8.4  
VIS 28  
YP 6  
pH 8.6  
Cl- 600  
Ca++ 420

WOB 25  
RPM 60  
PP 2500  
SPM 142





100% SHYSS: ltgy-dkgy, vf- mlgr, sbrnnd, p-mod srt, sft -firm, arg mtx, p-mod cmt, sl calc, mod glau

MD 3579'  
INC 15.04°  
AZI 201.26°  
TVD 3505.9'

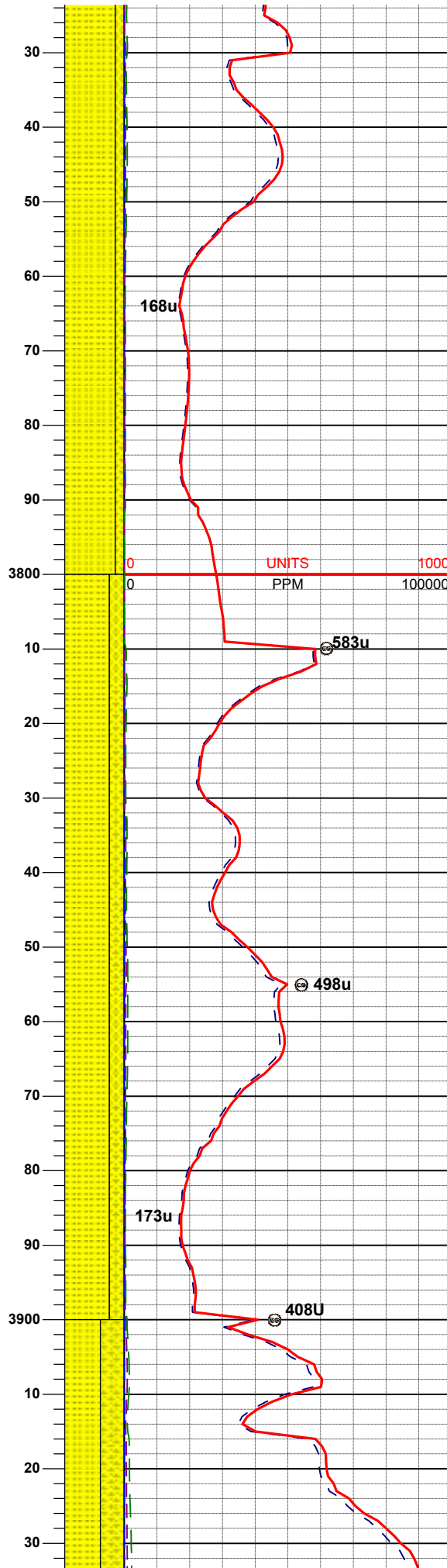
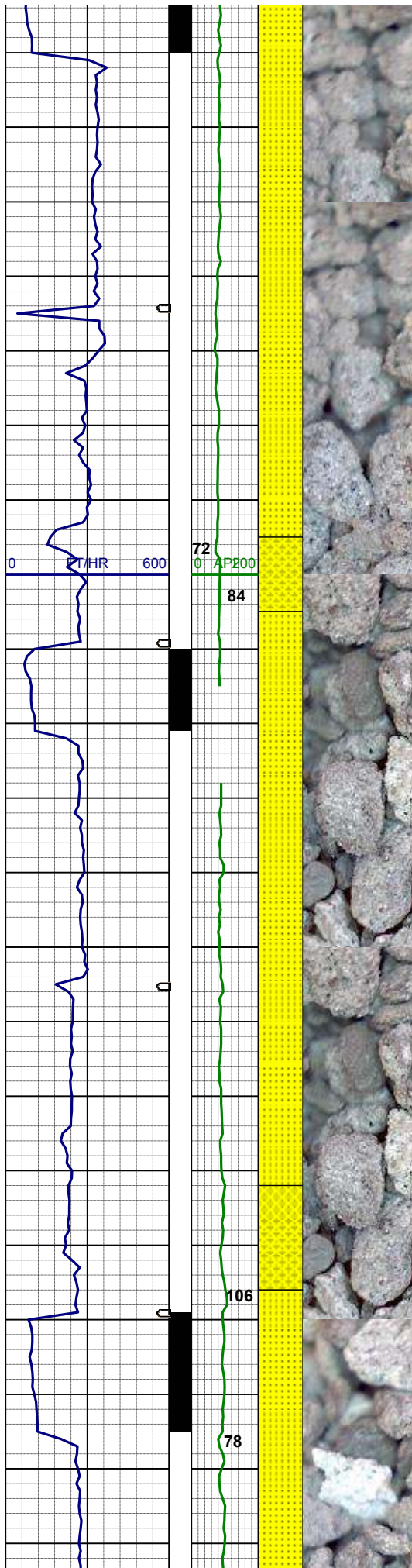
100% SHYSS: ltgy-dkgy, vf- mlgr, sbrnnd, p-mod srt, sft -firm, arg mtx, p-mod cmt, sl calc, mod glau

MD 3669'  
INC 15.79°  
AZI 196.64°  
TVD 3592.6'

PARKMAN  
LOGGER TOP  
MD 3669' TVD 3593'

WT 8.4 / VIS 28





85% SS: wh-mgy, clr- trnsi, f-migr,  
sbrnnd-sbang, mod srt, sft-fri, p cmt,  
sil mtx, sl calc, occ glau  
15% SHYSS: ltgy-dkgy, vf- mlgr,  
sbrnnd, p-mod srt, sft -firm, arg mtx, p  
-mod cmt, sl calc, mod glau

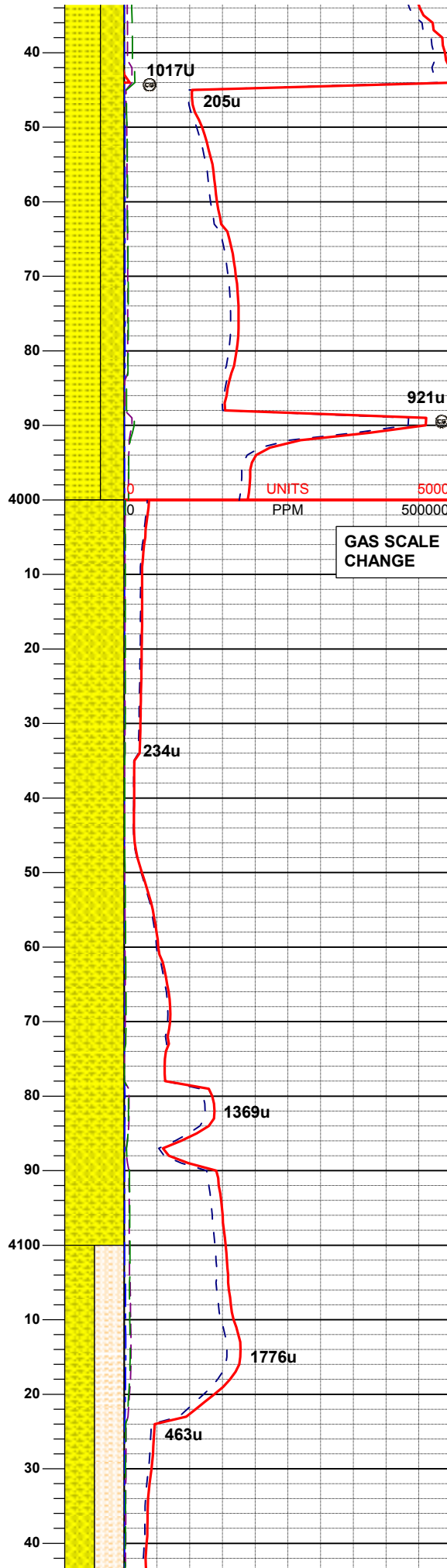
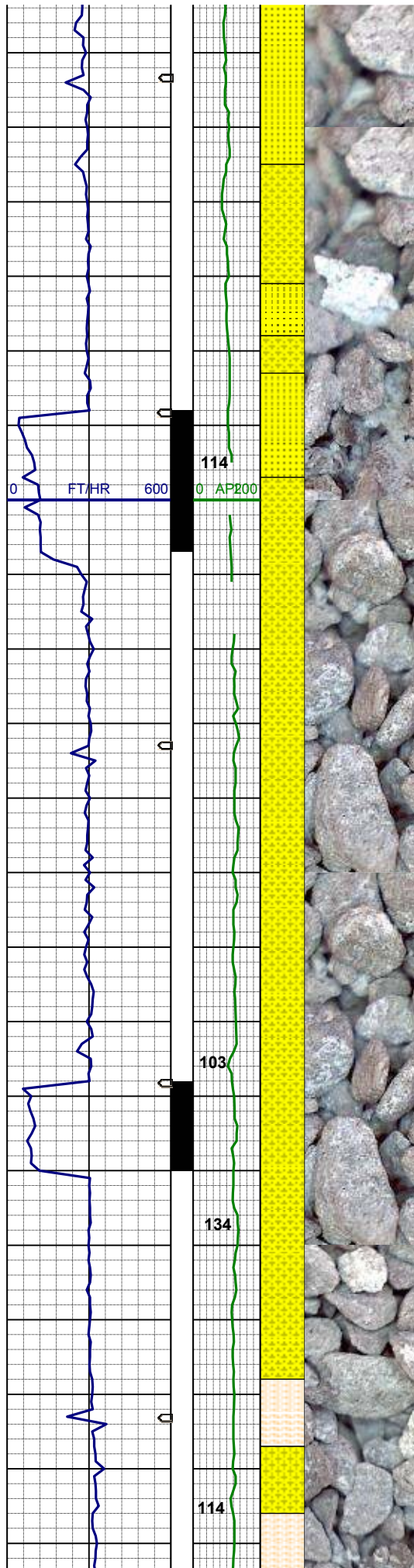
MD 3758'  
INC 18.75°  
AZI 194.63°  
TVD 3677.6'

75% SS: wh-mgy, clr- trnsi, f-migr,  
sbrnnd-sbang, mod srt, sft-fri, p cmt,  
sil mtx, sl calc, occ glau  
25% SHYSS: ltgy-dkgy, vf- mlgr,  
sbrnnd, p-mod srt, sft -firm, arg mtx, p  
-mod cmt, sl calc, mod glau

MD 3848'  
INC 18.03°  
AZI 194.71°  
TVD 3763.0'

WT 8.4 / VIS 28

MD 3937'



INC 16.49°  
AZI 197.92°  
TVD 3848.0'

60% SS: wh-mgy, clr- trnsl, f-migr,  
sbrnnd-sbang, mod srt, sft-fri, p cmt,  
sil mtx, sl calc, occ glau  
40% SHYSS: ltgy-dkgy, vf- mlgr,  
sbrnnd, p-mod srt, sft -firm, arg mtx, p  
-mod cmt, sl calc, occ glau

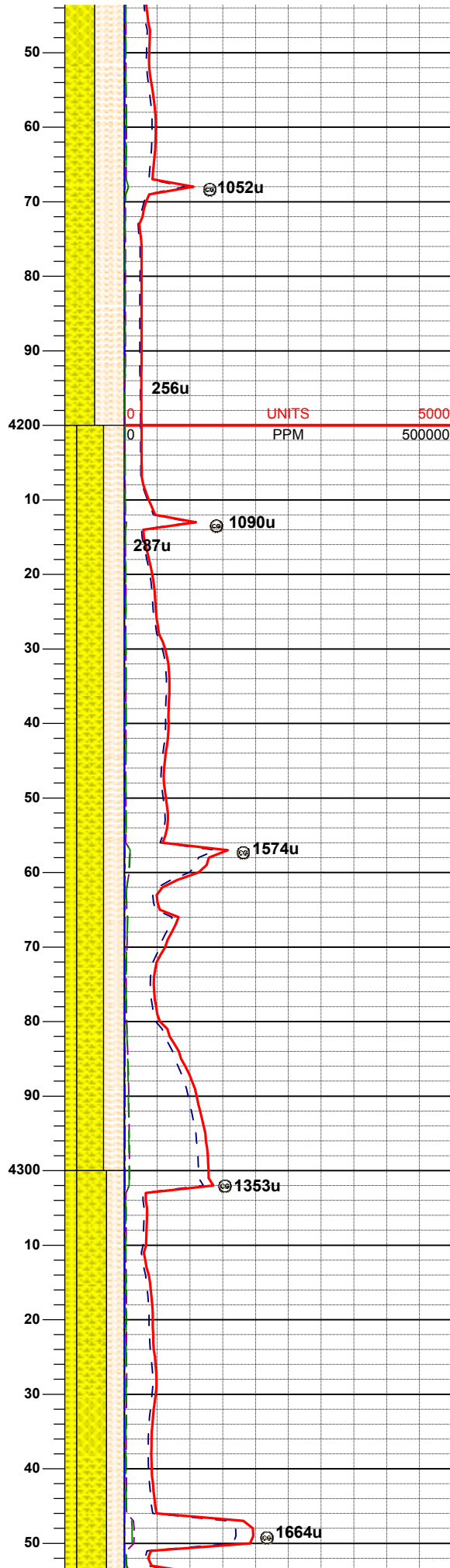
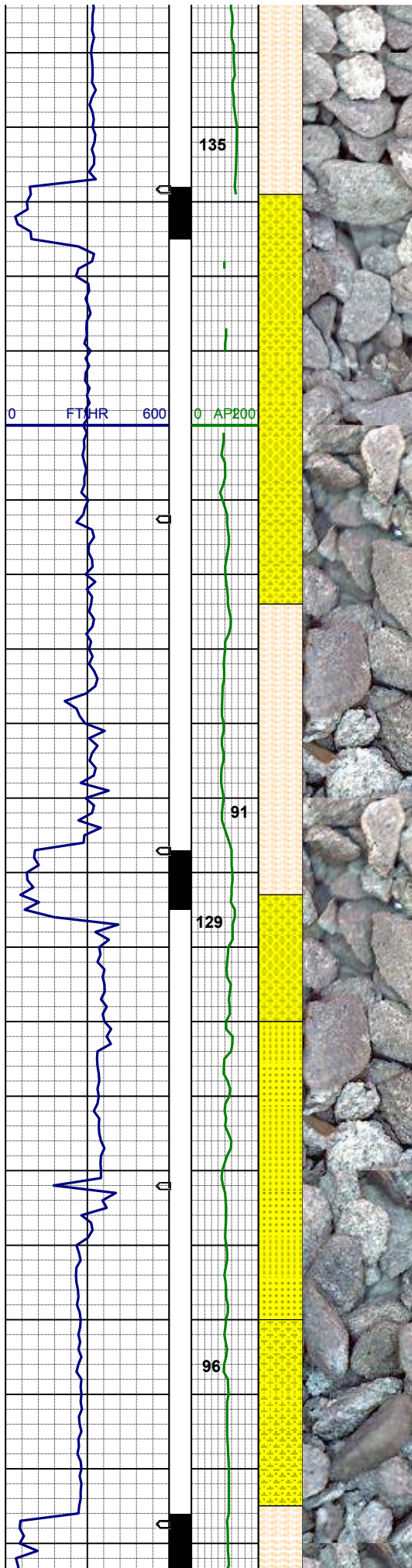
GAS SCALE  
CHANGE

MD 4027'  
INC 12.99°  
AZI 206.91°  
TVD 3935.0'

100% SHYSS: ltgy-dkgy, vf- mlgr,  
sbrnnd, p-mod srt, sft -firm, arg mtx, p  
-mod cmt, sl calc, occ glau

MD 4117'  
INC 10.34°  
AZI 199.71°  
TVD 4023.2'





50% SHYSLTST: ltgy, srt-tn, sbbky-sl sbply, slty tex, tr biot incl, grdg - shyss  
50% SHYSS: ltgy-dkgy, vf- mlgr, sbrnnd, p-mod srt, sft -firm, arg mtx, p-mod cmt, tr glau

MD 4206'  
INC 9.01°  
AZI 203.57°  
TVD 4110.9'

WT 8.4 / VIS 28

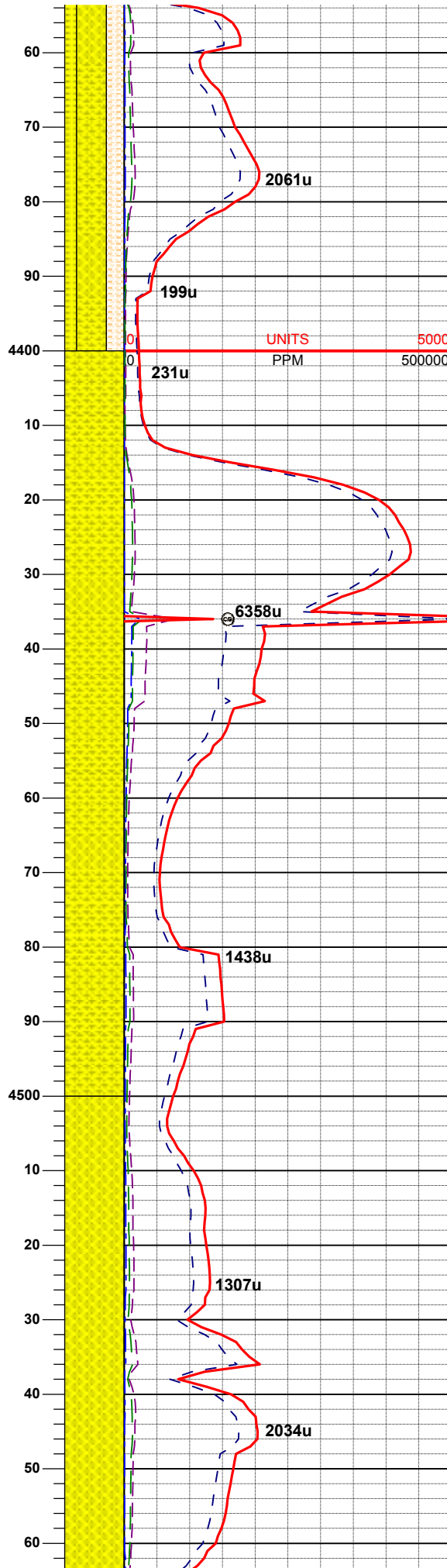
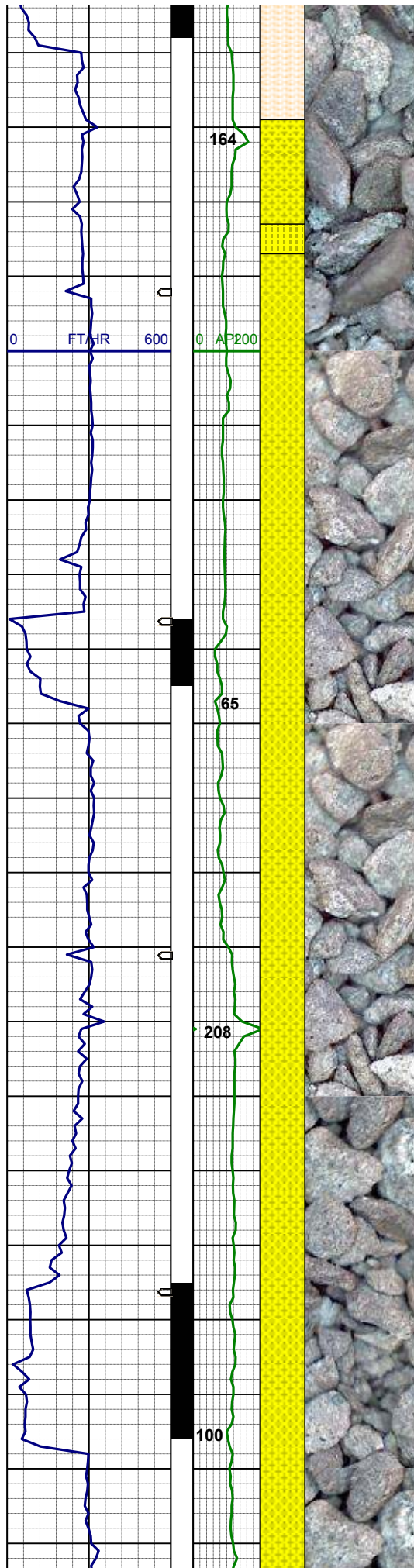
45% SHYSS: ltgy-dkgy, vf- mlgr, sbrnnd, p-mod srt, sft, arg mtx, p-mod cmt, tr glau  
35% SHYSLTST: ltgy, sft- fri, sbbky-sl sbply, slty tex, tr biot incl, grdg - shyss  
20% SS: wh-mgy, clr- trnsf, f-mlgr, sbrnnd-sbang, mod srt, sft-fri, p cmt, sil mtx

SUSSEX  
LOGGER TOP  
MD 4253' TVD 4156'

MD 4296'  
INC 7.59°  
AZI 208.60°  
TVD 4200.0'

50% SHYSS: ltgy-dkgy, vf- mlgr, sbrnnd, p-mod srt, sft, arg mtx, p-mod cmt, tr glau  
30% SHYSLTST: ltgy, sft- fri, sbbky-sl sbply, slty tex, tr biot incl, grdg - shyss





20% SS: wh-mgy, clr- trns, f-migr,  
sbrndd-sbang, mod srt, sft-fri, p cmt,  
sil mtx

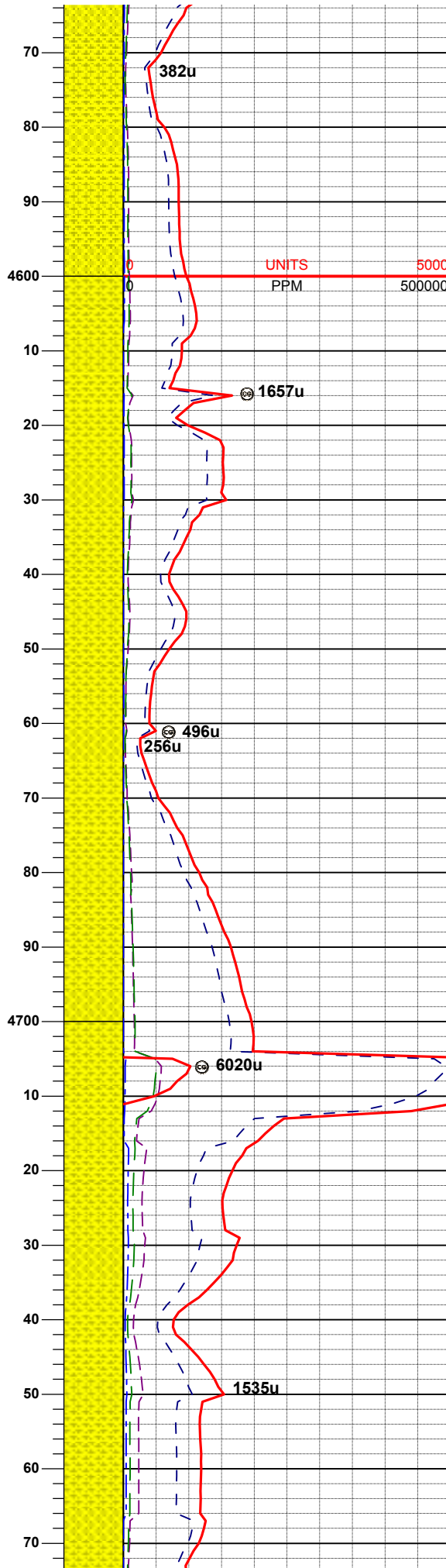
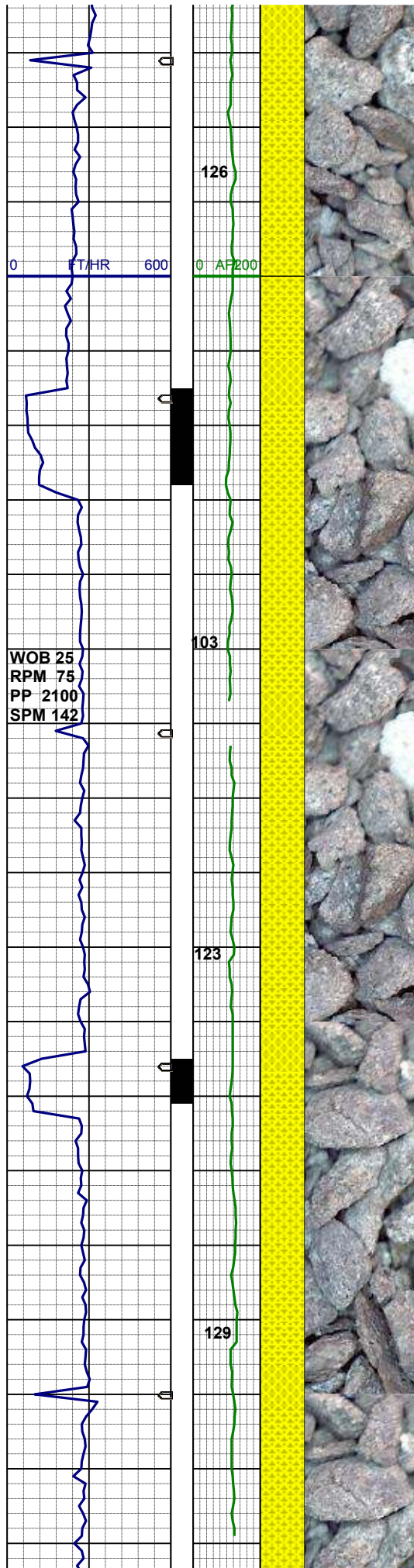
MD 4385'  
INC 5.16°  
AZI 206.09°  
TVD 4288.4'

100% SHYSS: ltgy-dkgy, vf- mlgr,  
sbrndd, p-mod srt, sft, arg mtx, p-mod  
cmt, tr glau

MD 4475'  
INC 4.26°  
AZI 203.07°  
TVD 4378.1'

100% SHYSS: ltgy-dkgy, vf- mlgr,  
sbrndd-sbang, p-mod srt, sft-mod  
firm, arg mtx, p-mod cmt, sl calc

MD 4565'



INC 3.74°  
AZI 198.32°  
TVD 4467.0'

WT 8.5 / VIS 28

100% SHYSS: ltgy-dkgy, vf- mlgr, sbrn-dd-sbng, p-mod srt, sft-mod firm, arg mtx, p-mod cmt, sl calc, tr glau, occ biot

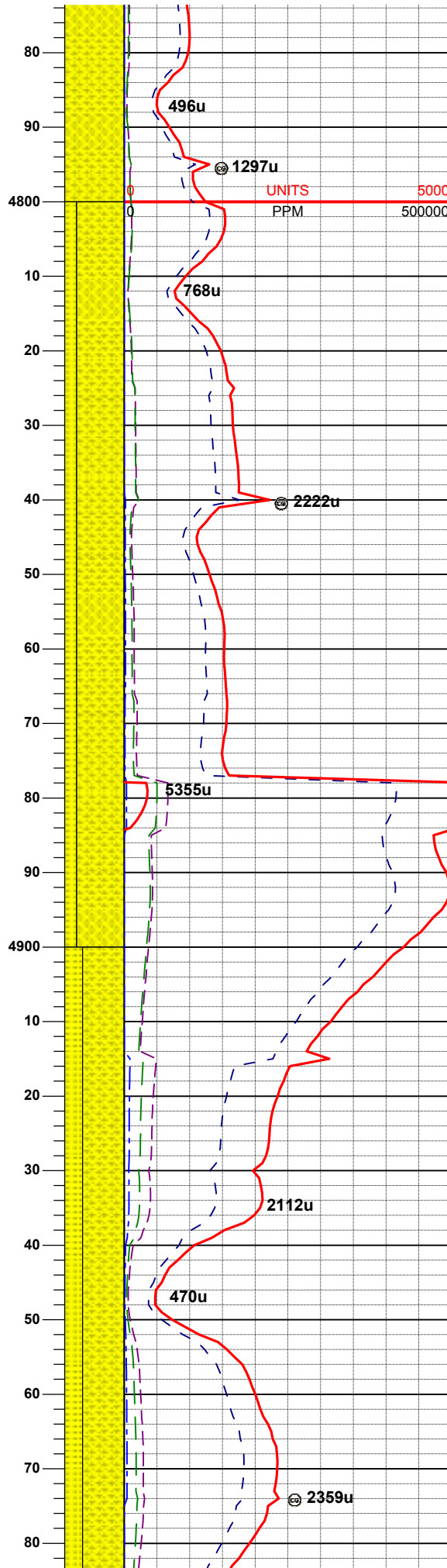
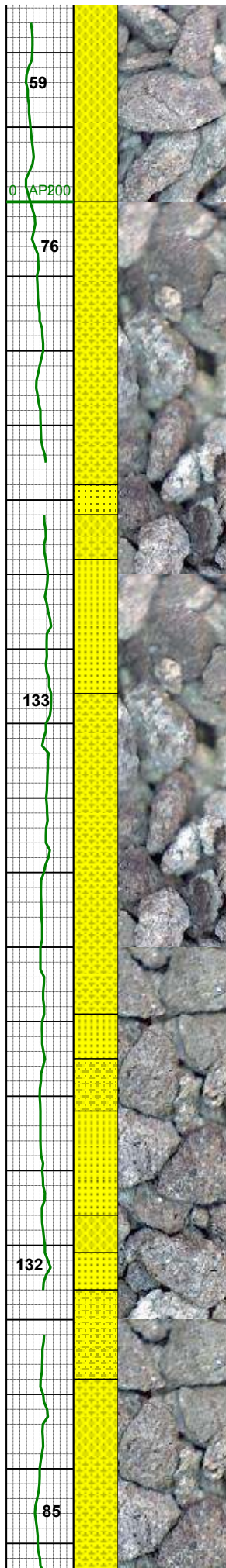
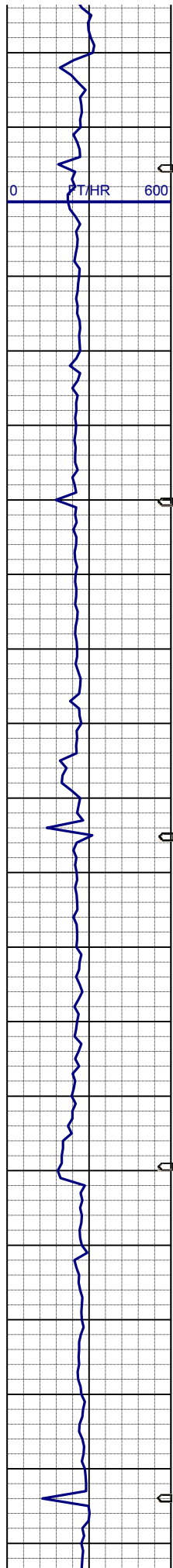
MD 4655'  
INC 1.29°  
AZI 186.52°  
TVD 4557.8'

MD 4744'  
INC 0.59°  
AZI 358.34°  
TVD 4646.8'

100% SHYSS: ltgy-dkgy, vf- mlgr, sbrn-dd-sbng, p-mod srt, sft-mod firm, arg mtx, p-mod cmt, sl calc, tr glau, occ biot

SHANNON  
LOGGER TOP  
MD 4770' TVD 4671'



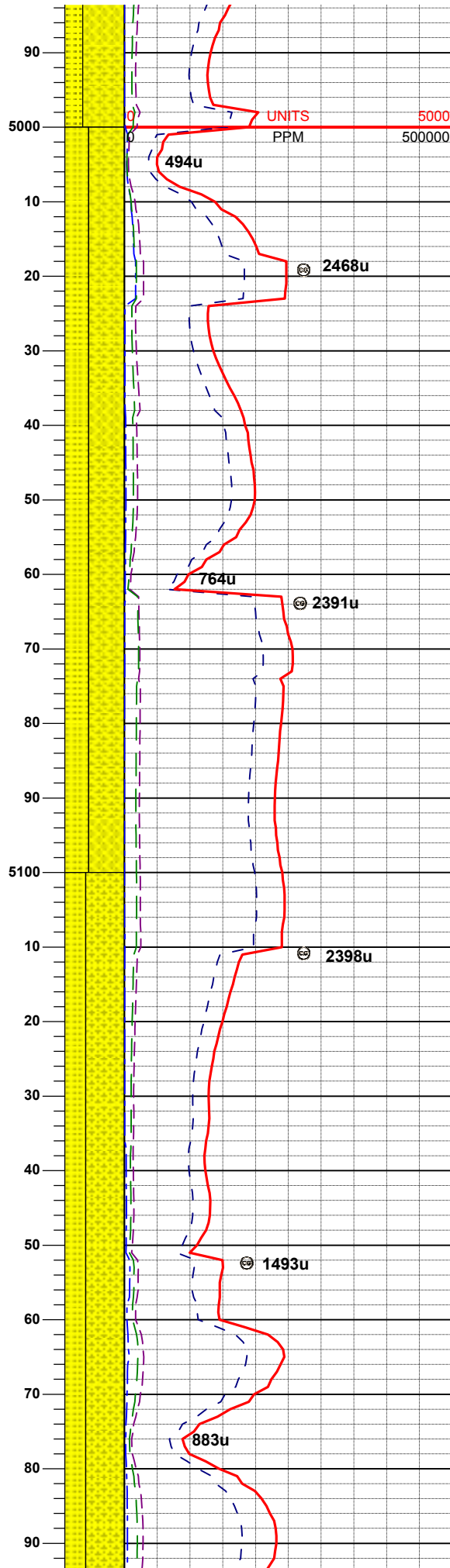
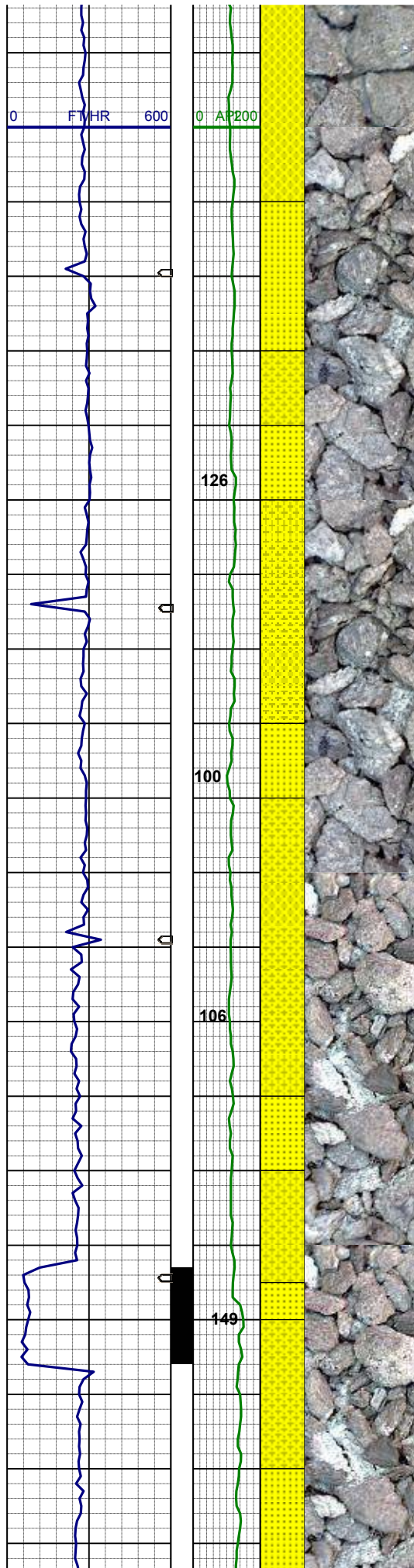


WT 8.6 / VIS 36

80% SHYSS: ltgy-dkgy, vf- mlgr, sbrn-dd-sbang, p-mod srt, sft-mod firm, arg mtx, p-mod cmt, sl calc, occ biot  
20% SS: wh-ltgy, clr- trnsl, f-mlgr, sbrn-dd-sbang, mod-w srt, sft-fri, p cmt, sil mtx, sl calc, occ glau

70% SHYSS: ltgy-dkgy, vf- mlgr, sbrn-dd-sbang, p-mod srt, sft-mod firm, arg mtx, p-mod cmt, sl calc, occ biot  
30% SS: wh-ltgy, clr- trnsl, f-mlgr, sbrn-dd-sbang, mod-w srt, sft-fri, p cmt, sil mtx, sl calc, occ glau

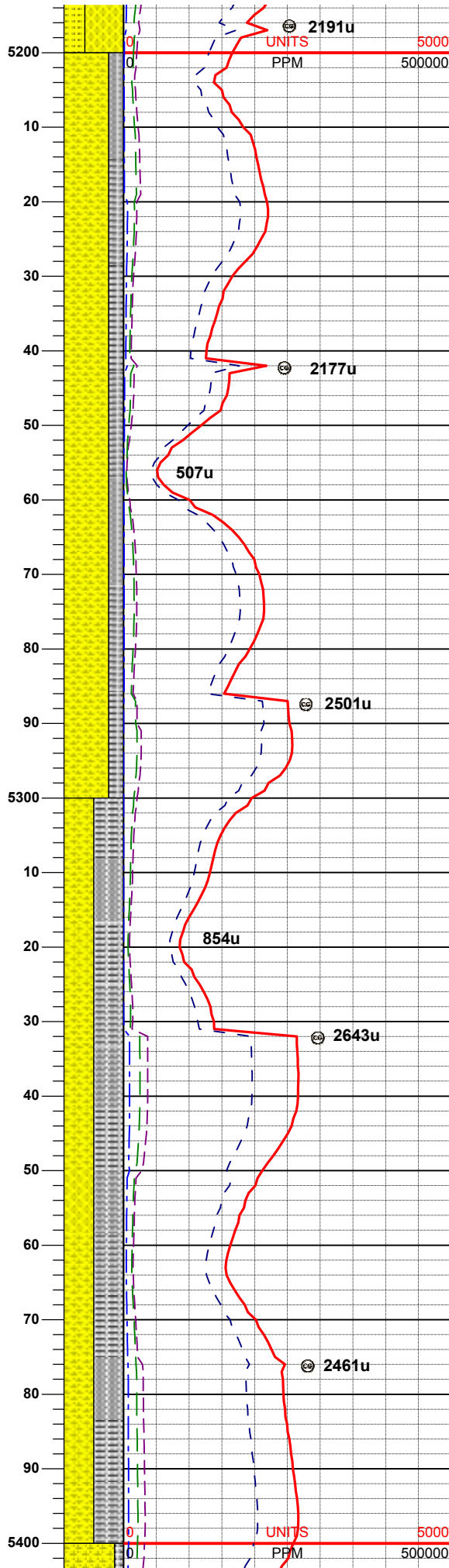
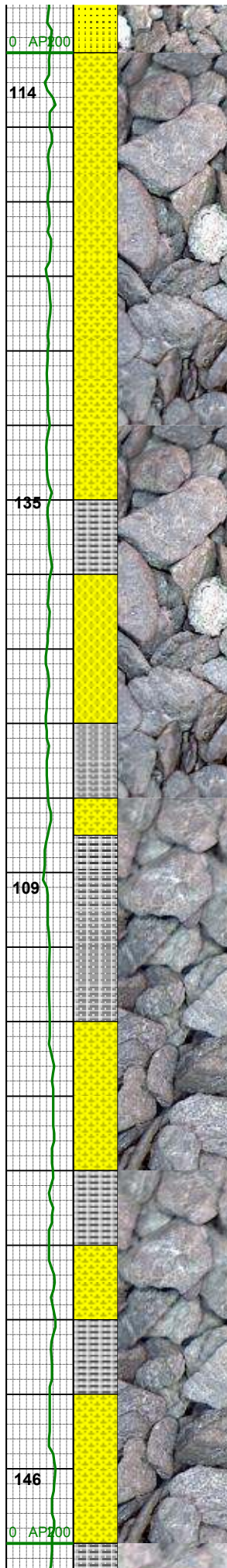
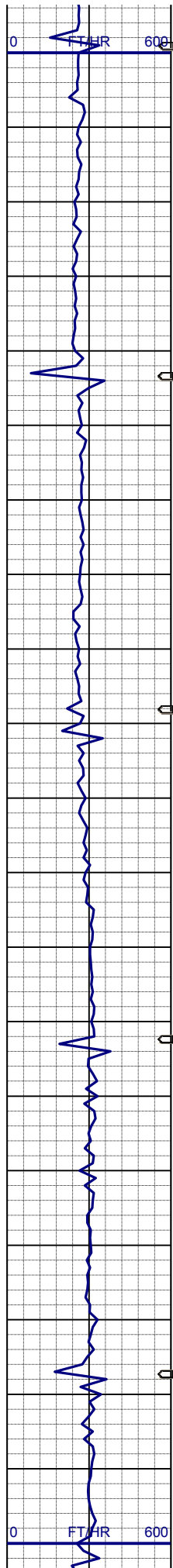




MD 5013'  
INC 1.36°  
AZI 358.65°  
TVD 4915.7'

60% SHYSS: ltgy - dkgy, vf - mgr,  
sbrnnd - sbang, p - mod srt, mod sft -  
mod firm, arg mtx, p-mod cmt, occ  
biot  
40% SS: ltgy, clr- trnsl, f - m gr,  
sbrnnd - sbang, mod - w srt, sft - fri, p  
cmt, sil mtx, occ glau

65% SHYSS: ltgy - dkgy, vf - mgr,  
sbrnnd - sbang, p - mod srt, mod sft -  
mod firm, arg mtx, p-mod cmt, occ  
biot  
35% SS: ltgy, clr- trnsl, f - m gr,  
sbrnnd - sbang, mod - w srt, sft - fri, p  
cmt, sil mtx, occ glau

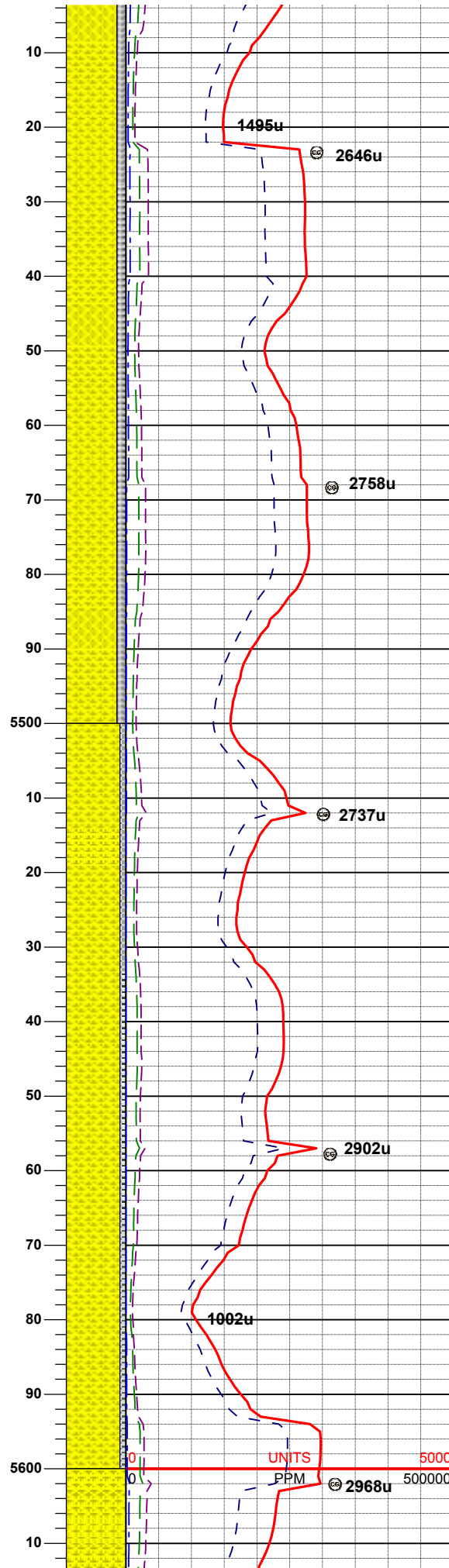
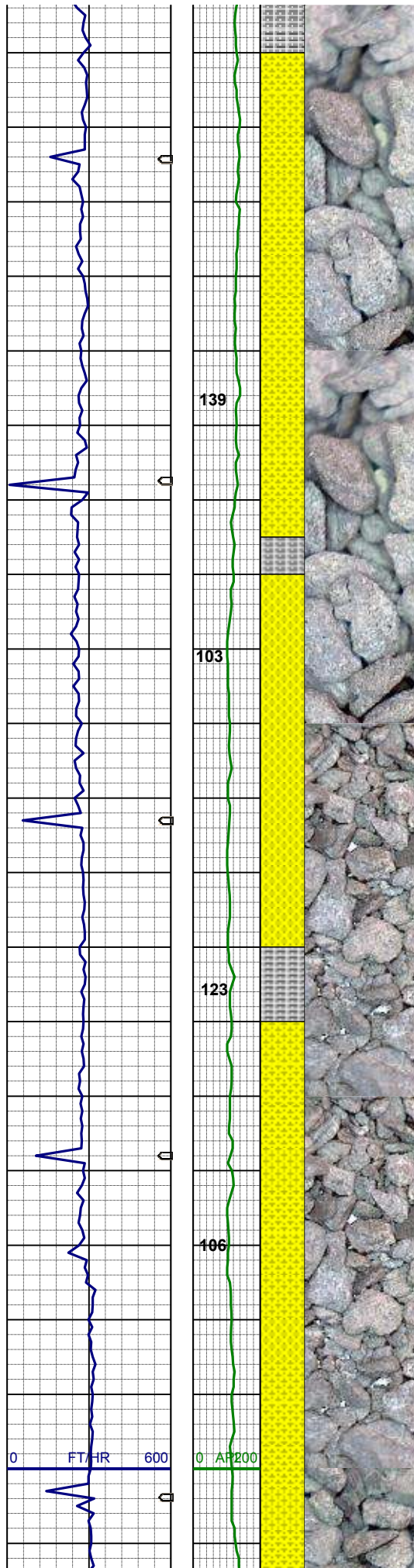


75% SHYSS: ltgy - dkgy, vf - mgr,  
sbrnnd - sbang, p - mod srt, mod sft -  
mod firm, arg mtx, p-mod cmt, occ  
biot  
25% SLTYSH: mgy- dkgy, sft- mod  
firm, sbrnnd- sbply, occ sbbly, shy-  
sly tex, ts ss

MD 5282'  
INC 0.74°  
AZI 223.55°  
TVD 5184.7'

50% SHYSS: ltgy - dkgy, vf - mgr,  
sbrnnd - sbang, p - mod srt, mod sft -  
mod firm, arg mtx, p-mod cmt, occ  
biot  
50% SLTYSH: mgy- dkgy, sft- mod  
firm, sbrnnd- sbply, occ sbbly, shy-  
sly tex, ts ss



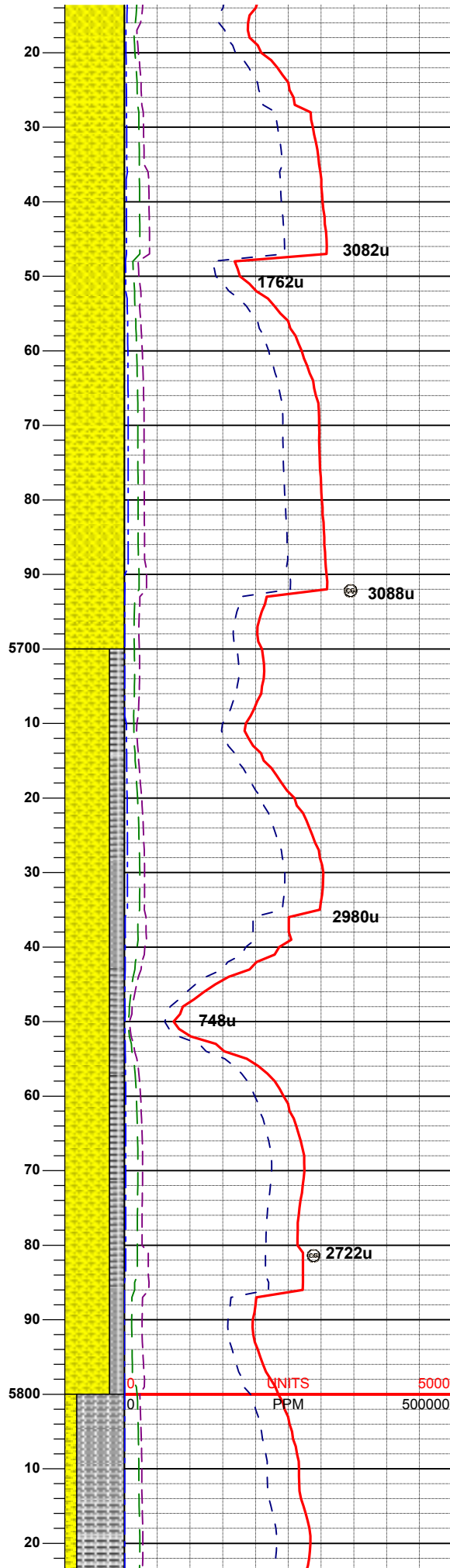
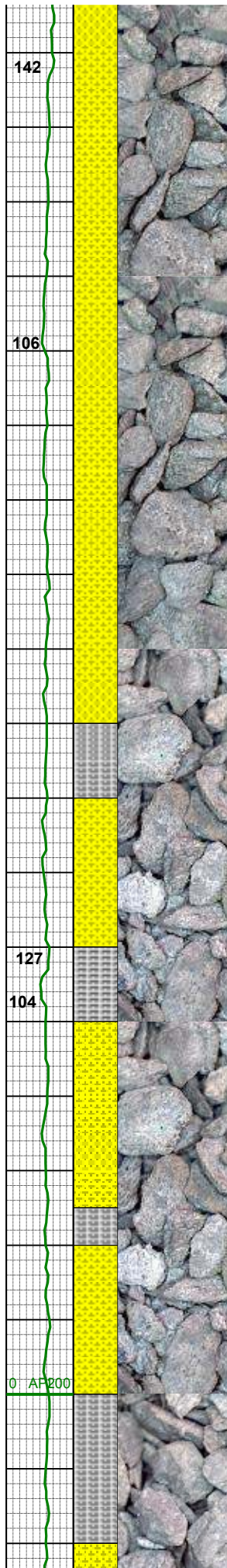
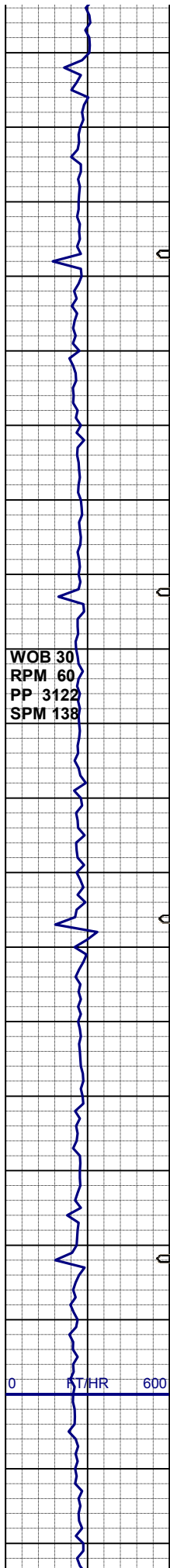


85% SHYSS: ltgy - dkgy, vf - mgr,  
sbrnnd - sbang, p - mod srt, mod sft -  
mod firm, arg mtx, p-mod cmt, occ  
biot  
15% SLTYSH: mgy- dkgy, sft- mod  
firm, sbrnnd- sbply, occ sbbly, shy-  
sly tex, ts ss

WT 9.4 / VIS 32

MD 5551'  
INC 0.35°  
AZI 174.52°  
TVD 5453.7'

90% SHYSS: ltgy - dkgy, vf - mgr,  
sbrnnd - sbang, p - mod srt, mod sft -  
mod firm, arg mtx, p-mod cmt, occ  
biot  
10% SLTYSH: mgy- dkgy, sft- mod  
firm, sbrnnd- sbply, occ sbbly, shy-  
sly tex, ts ss



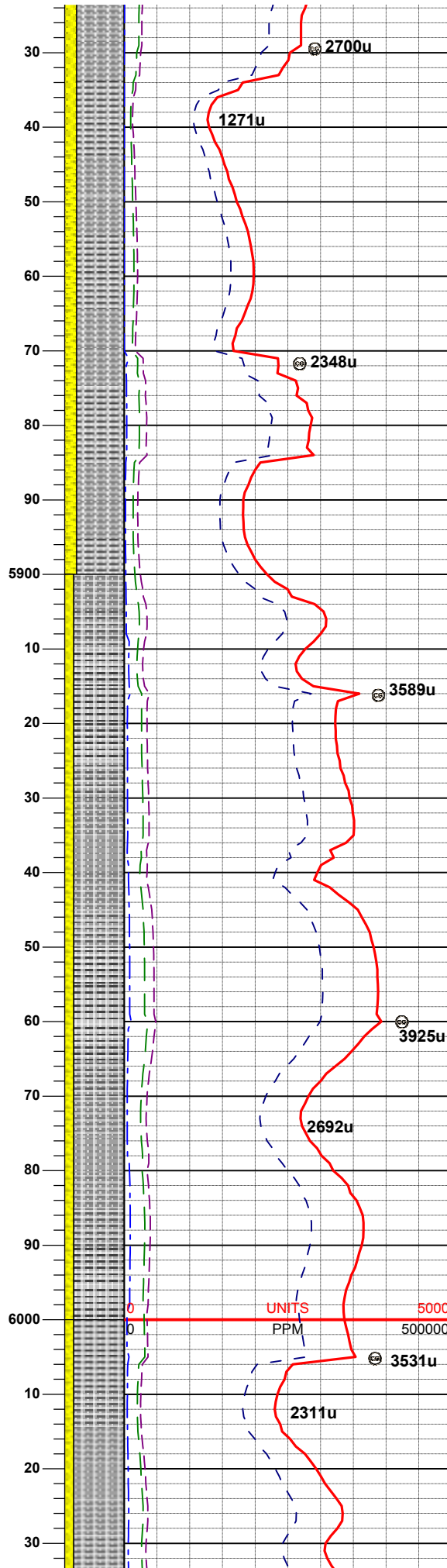
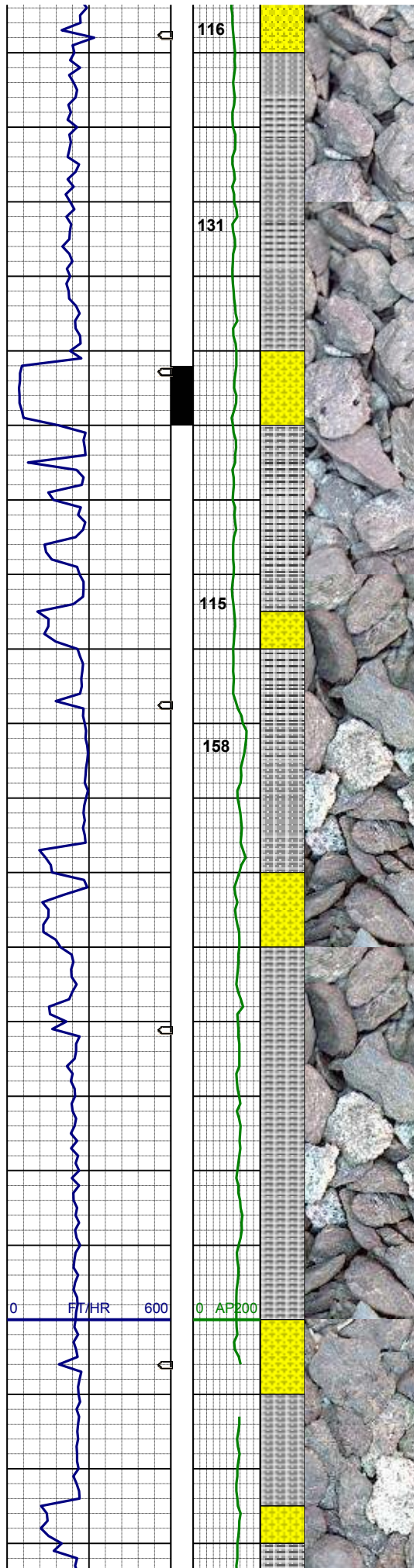
100% SHYSS: ltgy - dkgy, vf - mgr,  
sbrndd - sbang, p - mod srt, mod sft -  
mod firm, arg mtx, p-mod cmt, occ  
biot

75% SHYSS: ltgy - dkgy, vf - mgr,  
sbrndd - sbang, p - mod srt, mod sft -  
mod firm, arg mtx, p-mod cmt, occ  
biot  
25% SLTYSH: mgy- dkgy, sft- mod  
firm, sbrndd- sbplty, occ sbblky, shy-  
slyt tex, ts ss

WT 9.4 / VIS 36

MD 5820'  
INC 1.05°  
AZI 279.64°





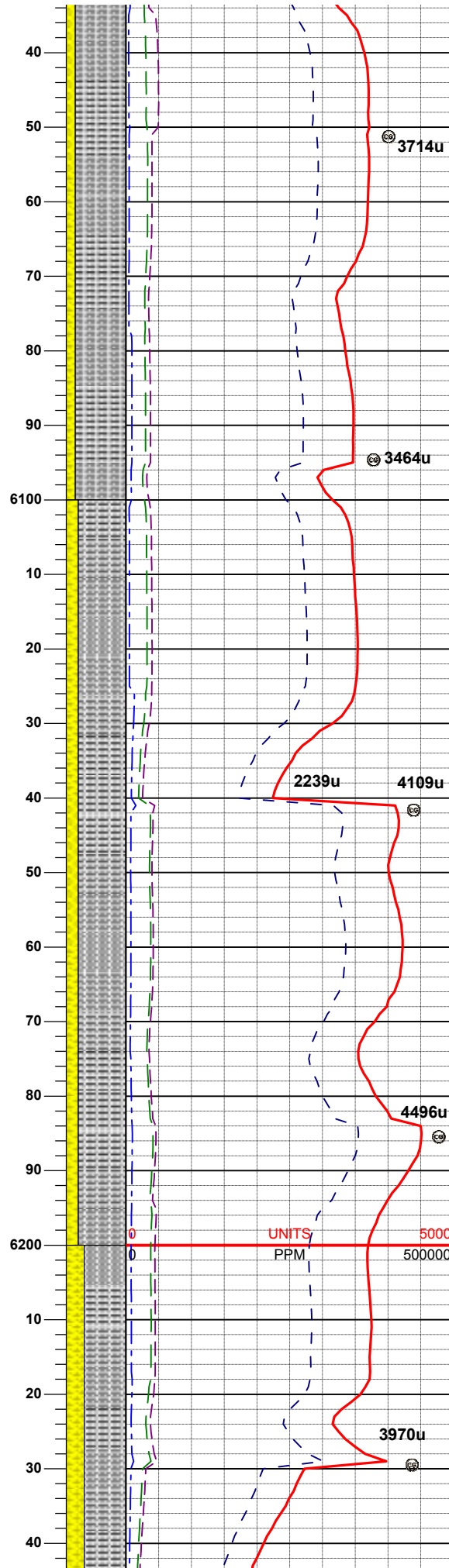
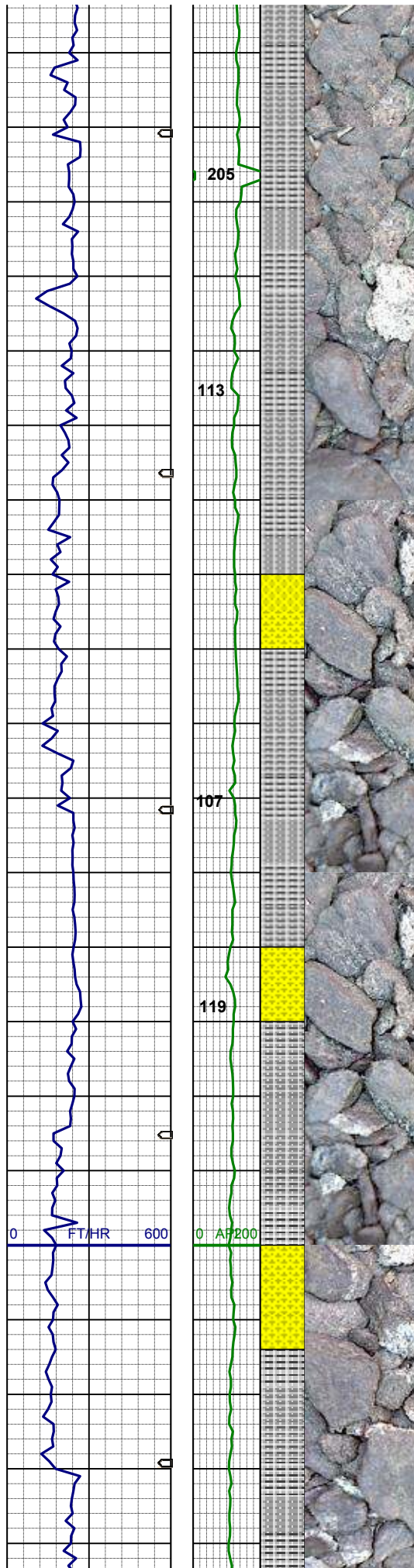
TVD 5722.7'

80% SLTYSH: mgy- dkgy, sft- mod  
firm, sbrndd- sbplty, occ sbbiky, shy-  
slyt tex, ts ss  
20% SHYSS: ltgy - dkgy, vf - mgr,  
sbrndd - sbang, p - mod srt, mod sft -  
mod firm, arg mtx, p-mod cmt, occ  
biot

WT 9.55 / VIS 37

85% SLTYSH: mgy- dkgy, sft- mod  
firm, sbrndd- sbplty, occ sbbiky, shy-  
slyt tex, ts ss  
15% SHYSS: ltgy - dkgy, vf - mgr,  
sbrndd - sbang, p - mod srt, mod sft -  
mod firm, arg mtx, p-mod cmt, occ  
biot

WT 9.55 / VIS 37



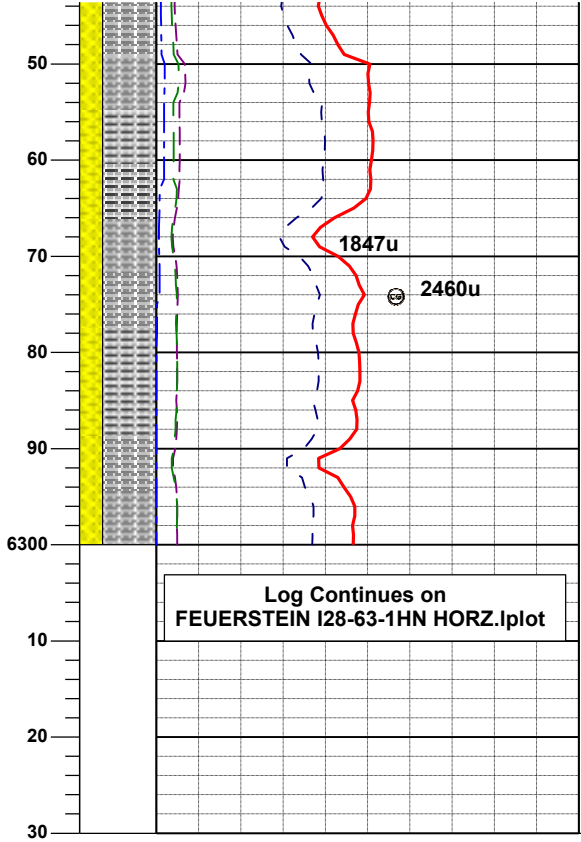
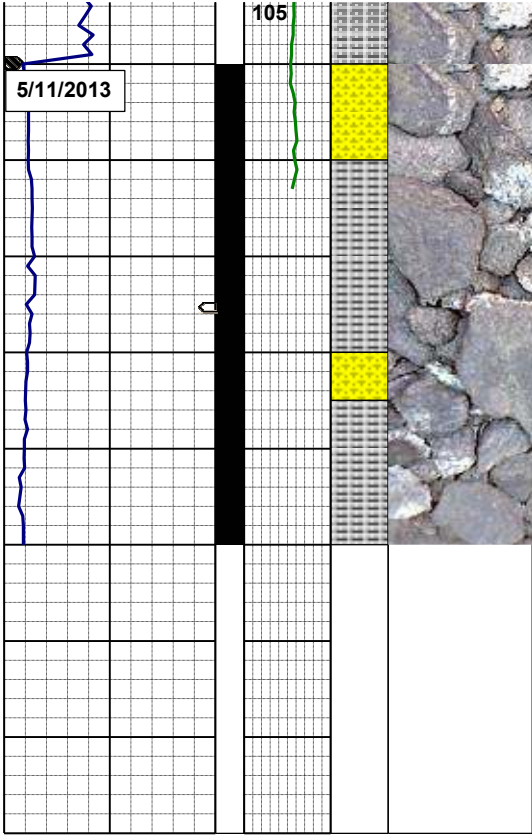
85% SLTYSH: mgy- dkgy, sft- mod  
firm, sbrndd- sbply, occ sbblky, shy-  
sly tex, ts ss  
15% SHYSS: ltgy - dkgy, vf - mgr,  
sbrndd - sbang, p - mod srt, mod sft -  
mod firm, arg mtx, p-mod cmt, occ  
biot

MD 6089'  
INC 0.52°  
AZI 288.63°  
TVD 5991.7'

80% SLTYSH: mgy- dkgy, sft- mod  
firm, sbrndd- sbply, occ sbblky, shy-  
sly tex, ts ss  
20% SHYSS: ltgy - dkgy, vf - mgr,  
sbrndd - sbang, p - mod srt, mod sft -  
mod firm, arg mtx, p-mod cmt, occ  
biot

WT 9.85 / VIS 38





firm, sbrndd- sbplty, occ sbblky, shy-  
sly tex, ts ss  
30% SHYSS: ltgy - dkgy, vf - mgr,  
sbrndd - sbang, p - mod srt, mod sft -  
mod firm, arg mtx, p-mod cmt, occ  
biot

MD 6268'  
INC 0.88°  
AZI 109.91°  
TVD 6170.7'

THANK YOU FOR CHOOSING  
COLUMBINE LOGGING INC.