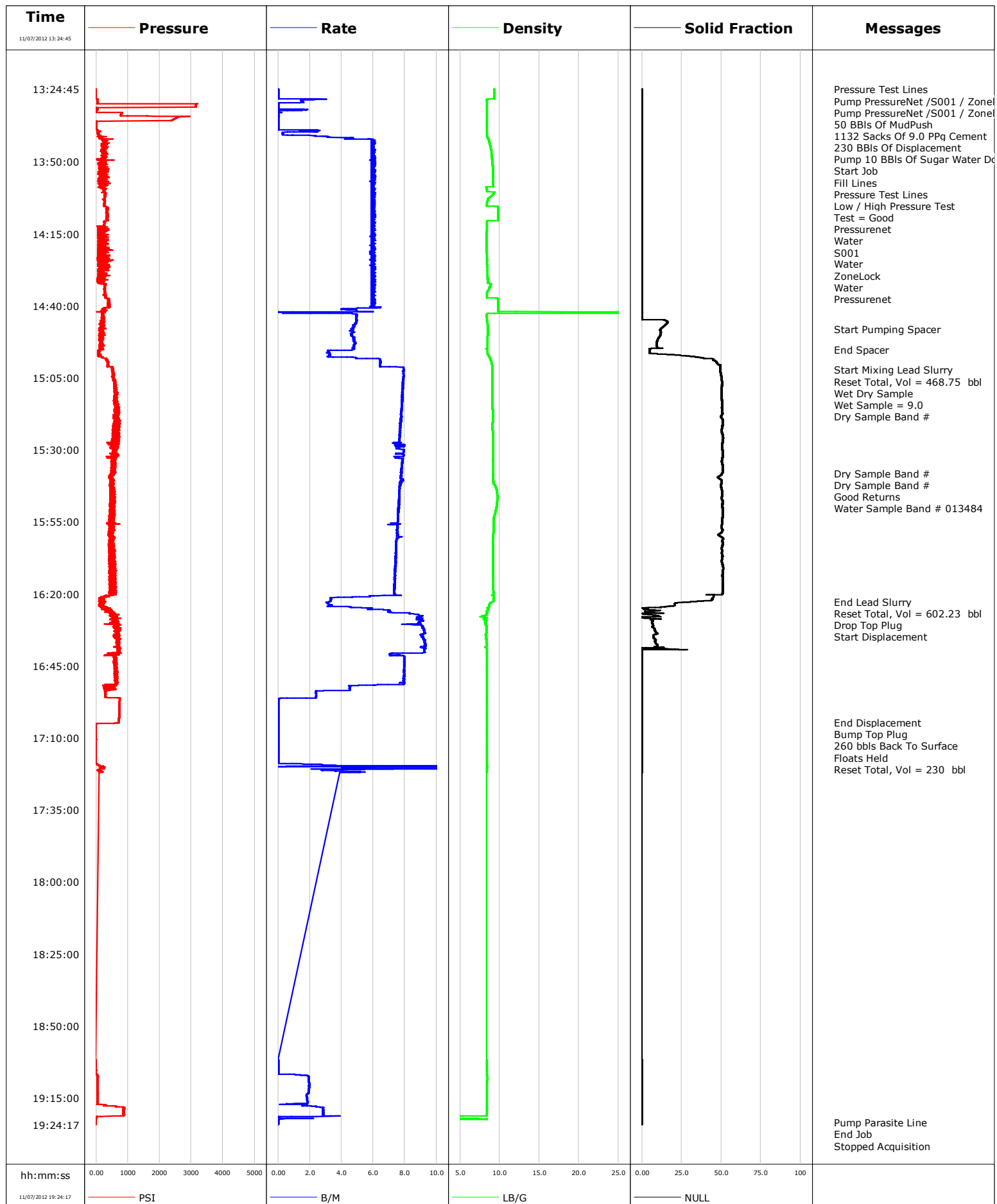


Well SG 8509D-24
Field Stary Gulch
Engineer ROGERS / HANSEN
Country United States

Client Encana
SIR No. C610-00893
Job Type Surface
Job Date 11-07-2012





Cementing Service Report

				Customer Encana		Job Number C610-00893		
Well SG 8509D-24			Location (legal) L-24		Schlumberger Location Grans Junction, CO.		Job Start Nov/07/2012	
Field Stary Gulch		Formation Name/Type Dirty-Sandstone		Deviation	Bit Size	Well MD		Well TVD
County Garfield		State/Province Colorado		BHP	BHST	BHCT	Pore Press. Gradient	
Well Master 1216964		API/UWI 05045211780000						
Rig Name Patterson 330	Drilled For Gas	Service Via Land	Casing/Liner					
			Depth, ft	Size, in	Weight, lb/ft	Grade	Thread	
Offshore Zone	Well Class New	Well Type Development	3025.0	9.630	36.0	j55	BUTT	
			0.0	0.000	0.0			
Drilling Fluid Type		Max. Density	Plastic Viscosity	Tubing/Drill Pipe				
				Depth,	Size,	Weight,	Grade	Thread
Service Line Cementing	Job Type Surface							
Max. Allowed Tub. Press	Max. Allowed Ann. Press	WH Connection Single Cement head	Perforations/Open Hole					
			Top,	Bottom,		No. of Shots	Total Interval	
Service Instructions							Diameter	
			Treat Down Casing	Displacement	Packer Type	Packer Depth		
			Tubing Vol.	Casing Vol.	Annular Vol.	Openhole Vol.		
Casing/Tubing Secured <input checked="" type="checkbox"/>		1 Hole Vol. Circulated prior to Cement <input checked="" type="checkbox"/>		Casing Tools		Squeeze Job		
Lift Pressure			Shoe Type Float			Squeeze Type		
Pipe Rotated <input type="checkbox"/>		Pipe Reciprocated <input type="checkbox"/>		Shoe Depth 3025.0 ft		Tool Type		
No. Centralizers		Top Plugs 1	Bottom Plugs	Stage Tool Type		Tool Depth		
Cement Head Type Single			Stage Tool Depth		Tail Pipe Size			
Job Scheduled For Nov/07/2012		Arrived on Location Nov/07/2012	Leave Location Nov/07/2012	Collar Type Float		Tail Pipe Depth		
			Collar Depth		Sqz. Total Vol.			
Date	Time 24-hr clock	Treating Pressure PSI	Flow Rate B/M	Density LB/G	Volume BBL	Message		
11/07/2012	12:44:53					Started Acquisition		
11/07/2012	13:24:45					Pressure Test Lines		
11/07/2012	13:24:45					Pump PressureNet /S001 / Zonelock Pill		
11/07/2012	13:24:45	-5	0.0	9.28	0.0			
11/07/2012	13:24:46					Pump PressureNet /S001 / Zonelock Pill		
11/07/2012	13:24:46					50 BBLs Of MudPush		
11/07/2012	13:24:46	-5	0.0	9.28	0.0			
11/07/2012	13:24:47					1132 Sacks Of 9.0 PPg Cement		
11/07/2012	13:24:47	-5	0.0	9.28	0.0			
11/07/2012	13:24:48					230 BBLs Of Displacement		
11/07/2012	13:24:48	-5	0.0	9.28	0.0			
11/07/2012	13:24:50					Pump 10 BBLs Of Sugar Water Down Parasite Line		
11/07/2012	13:24:50	-4	0.0	9.28	0.0			
11/07/2012	13:24:53	-5	0.0	9.28	0.0			
11/07/2012	13:24:59					Start Job		
11/07/2012	13:24:59	-4	0.0	9.28	0.0			
11/07/2012	13:25:02					Fill Lines		
11/07/2012	13:25:02	-5	0.0	9.28	0.0			
11/07/2012	13:25:06					Pressure Test Lines		
11/07/2012	13:25:06	-5	0.0	9.28	0.0			
11/07/2012	13:25:07					Low / High Pressure Test		

Well			Field		Job Start		Customer		Job Number	
SG 8509D-24			Stary Gulch		Nov/07/2012		Encana		C610-00893	
Date	Time 24-hr clock	Treating Pressure PSI	Flow Rate B/M	Density LB/G	Volume BBL	Message				
11/07/2012	13:25:07	-5	0.0	9.28	0.0					
11/07/2012	13:29:53	3152	0.0	8.37	2.3					
11/07/2012	13:34:53	2515	0.0	8.38	3.1					
11/07/2012	13:37:43					Pressurenent				
11/07/2012	13:37:43	2	0.0	8.38	3.1					
11/07/2012	13:39:53	69	0.3	8.38	4.6					
11/07/2012	13:44:53	244	6.0	8.84	25.8					
11/07/2012	13:49:53	176	5.9	9.06	55.7					
11/07/2012	13:54:53	268	6.0	9.14	85.5					
11/07/2012	13:59:53	265	6.0	8.37	115.3					
11/07/2012	14:04:53	252	6.0	8.37	145.2					
11/07/2012	14:09:45					Water				
11/07/2012	14:09:45	352	5.9	9.80	174.2					
11/07/2012	14:09:46					S001				
11/07/2012	14:09:46	346	5.9	9.80	174.3					
11/07/2012	14:09:47					Water				
11/07/2012	14:09:47	351	6.0	9.80	174.4					
11/07/2012	14:09:48					ZoneLock				
11/07/2012	14:09:48	351	6.0	9.80	174.5					
11/07/2012	14:09:53	334	5.9	9.80	175.0					
11/07/2012	14:10:18					Water				
11/07/2012	14:10:18	338	5.9	9.80	177.5					
11/07/2012	14:13:24					Pressurenent				
11/07/2012	14:13:24	87	5.9	8.36	196.0					
11/07/2012	14:14:53	135	5.9	8.36	204.8					
11/07/2012	14:19:53	262	6.0	8.36	234.6					
11/07/2012	14:24:53	222	5.9	8.41	264.4					
11/07/2012	14:29:53	241	6.0	8.47	294.3					
11/07/2012	14:34:53	284	6.0	8.48	324.2					
11/07/2012	14:39:53	393	6.0	9.80	354.0					
11/07/2012	14:44:53	217	4.9	8.41	376.7					
11/07/2012	14:47:59					Start Pumping Spacer				
11/07/2012	14:47:59	309	4.7	8.49	391.7					
11/07/2012	14:49:53	98	4.6	8.53	400.6					
11/07/2012	14:54:53	224	4.8	8.47	424.4					
11/07/2012	14:55:10					End Spacer				
11/07/2012	14:55:10	112	4.8	8.46	425.8					
11/07/2012	14:59:53	353	6.5	8.97	447.2					
11/07/2012	15:02:13					Start Mixing Lead Slurry				
11/07/2012	15:02:13	524	7.9	9.08	463.6					
11/07/2012	15:02:52					Reset Total, Vol = 468.75 bbl				
11/07/2012	15:02:52	496	7.9	9.08	468.8					
11/07/2012	15:02:53					Wet Dry Sample				
11/07/2012	15:02:53					Wet Sample = 9.0				
11/07/2012	15:02:53	540	7.9	9.08	468.9					
11/07/2012	15:02:55					Dry Sample Band #				
11/07/2012	15:02:55	549	7.9	9.08	469.1					
11/07/2012	15:04:53	536	7.9	9.08	484.7					
11/07/2012	15:09:53	610	7.8	9.07	524.0					
11/07/2012	15:14:53	700	7.8	9.09	563.1					
11/07/2012	15:19:53	637	7.7	9.13	601.9					
11/07/2012	15:24:53	715	7.7	9.15	640.4					
11/07/2012	15:29:53	647	7.9	9.18	678.7					
11/07/2012	15:34:53	550	7.8	9.18	717.8					

Well			Field		Job Start		Customer		Job Number	
SG 8509D-24			Stary Gulch		Nov/07/2012		Encana		C610-00893	
Date	Time 24-hr clock	Treating Pressure PSI	Flow Rate B/M	Density LB/G	Volume BBL	Message				
11/07/2012	15:38:04	597	7.8	9.21	742.5					
11/07/2012	15:38:38					Dry Sample Band #				
11/07/2012	15:38:38					Good Returns				
11/07/2012	15:38:38	438	7.8	9.21	746.9					
11/07/2012	15:39:22					Water Sample Band # 013484				
11/07/2012	15:39:22	529	7.8	9.19	752.6					
11/07/2012	15:39:53	499	7.7	9.19	756.6					
11/07/2012	15:44:53	464	7.6	9.66	795.1					
11/07/2012	15:49:53	497	7.6	9.59	833.3					
11/07/2012	15:54:53	475	7.6	9.24	871.1					
11/07/2012	15:59:53	493	7.5	9.20	908.6					
11/07/2012	16:04:53	482	7.4	9.11	946.0					
11/07/2012	16:09:53	421	7.4	9.12	983.0					
11/07/2012	16:14:53	542	7.4	9.15	1019.9					
11/07/2012	16:19:53	531	7.3	9.22	1056.6					
11/07/2012	16:22:42					End Lead Slurry				
11/07/2012	16:22:42	144	3.3	9.15	1070.3					
11/07/2012	16:22:54					Reset Total, Vol = 602.23 bbl				
11/07/2012	16:22:54	120	3.1	9.03	1071.0					
11/07/2012	16:22:56					Drop Top Plug				
11/07/2012	16:22:56	233	3.1	9.01	1071.1					
11/07/2012	16:23:01					Start Displacement				
11/07/2012	16:23:01	123	3.0	8.95	1071.3					
11/07/2012	16:24:53	258	5.6	8.50	1078.0					
11/07/2012	16:29:53	635	8.9	8.15	1118.3					
11/07/2012	16:34:53	638	9.1	8.30	1163.6					
11/07/2012	16:39:53	692	9.2	8.39	1209.7					
11/07/2012	16:44:53	607	7.9	8.39	1249.6					
11/07/2012	16:49:53	633	7.9	8.39	1289.3					
11/07/2012	16:54:53	296	2.4	8.38	1315.3					
11/07/2012	16:59:53	725	0.0	8.38	1318.7					
11/07/2012	17:04:39					End Displacement				
11/07/2012	17:04:39	716	0.0	8.38	1318.7					
11/07/2012	17:04:40					Bump Top Plug				
11/07/2012	17:04:40	716	0.0	8.38	1318.7					
11/07/2012	17:04:41					260 bbls Back To Surface				
11/07/2012	17:04:41	716	0.0	8.38	1318.7					
11/07/2012	17:04:53					Floats Held				
11/07/2012	17:04:53	650	0.0	8.38	1318.7					
11/07/2012	17:06:20					Reset Total, Vol = 230 bbl				
11/07/2012	17:06:20	-3	0.0	8.39	1318.7					
11/07/2012	17:09:53	-3	0.0	8.39	1318.7					
11/07/2012	17:14:53	-3	0.0	8.39	1318.7					
11/07/2012	17:19:53	224	2.1	8.40	1321.9					
11/07/2012	19:04:53	-3	0.0	8.39	1332.8					
11/07/2012	19:09:53	46	2.0	8.40	1338.4					
11/07/2012	19:14:53	45	1.8	8.39	1347.9					
11/07/2012	19:19:53	878	2.8	8.38	1358.4					
11/07/2012	19:23:29					Pump Parasite Line				
11/07/2012	19:23:29	-3	0.0	0.26	1363.2					
11/07/2012	19:24:13					End Job				
11/07/2012	19:24:13	-3	0.0	0.26	1363.2					

Well SG 8509D-24	Field Stary Gulch	Job Start Nov/07/2012	Customer Encana	Job Number C610-00893
----------------------------	-----------------------------	---------------------------------	---------------------------	---------------------------------

Post Job Summary

Average Pump Rates, bbl/min					Volume of Fluid Injected, bbl			
Slurry 6.6	N2	Mud 0.0	Maximum Rate 9.3	Total Slurry 570.0	Mud 0.0	Spacer 50.0	N2	
Treating Pressure Summary, psi					Breakdown Fluid			
Maximum 3211	Final -3	Average 440	Bump Plug to	Breakdown	Type	Volume	Density	
Avg. N2 Percent	Designed Slurry Volume	Displacement 230.0 bbl	Mix Water Temp	Cement Circulated to Surface? <input checked="" type="checkbox"/>	Volume			
				Washed Thru Perfs <input type="checkbox"/>	To			
Customer or Authorized Representative Ira Cox		Schlumberger Supervisor ROGERS / HANSEN			Circulation Lost <input type="checkbox"/>	Job Completed <input checked="" type="checkbox"/>		
					-		-	