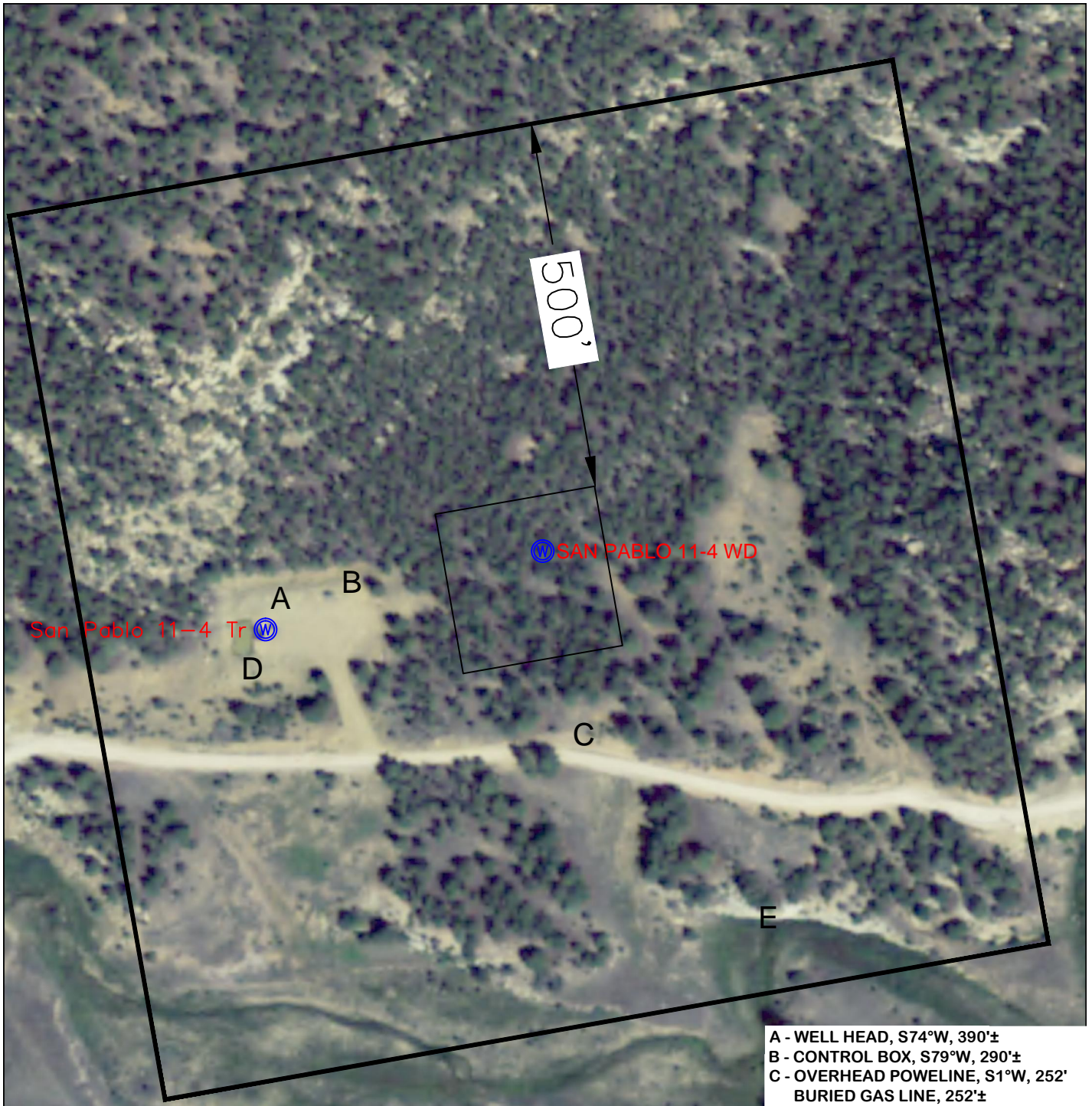


Location for *San Pablo 11-4 WD*

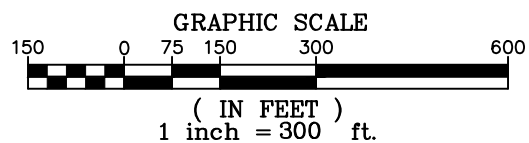


- A - WELL HEAD, S74°W, 390'±
B - CONTROL BOX, S79°W, 290'±
C - OVERHEAD POWELINE, S1°W, 252'
BURIED GAS LINE, 252'±
ROAD, S1°W, 268'
D - OLD PITS, S74°W, 410'±
E - STREAM, S32°E, 580'±

AERIAL PHOTO: USDA-NCRS 2011

NOTE:

FOOTAGES GIVEN ARE ONLY ESTIMATES BASED ON SUBDIVISION PLATS AND TIED TO EXISTING CONTROL. A FULL BOUNDARY SURVEY IS REQUIRED TO DETERMINE TRUE SUBDIVISION LOT AND ROAD LOCATIONS, DISTANCES AND AREA OR FOOTAGE CALCULATIONS.



S HIELDS **S** URVEY **L** td. **C** o.
619 South 2nd Street
P.O. Box 639
Raton, New Mexico 87740
Phone: 445-1232 Fax: 445-3648

Date: October 3, 2013