

The Road to Excellence Starts with Safety

Sold To #: 352431		Ship To #: 2976302		Quote #:		Sales Order #: 900181639	
Customer: CONOCO/PHILLIPS COMPANY EBUSINESS				Customer Rep: Perez, Richard			
Well Name: Tebo 1			Well #: 1H		API/UWI #: 05-005-07199		
Field:		City (SAP): BENNETT		County/Parish: Arapahoe		State: Colorado	
Lat: N 39.649 deg. OR N 39 deg. 38 min. 57.239 secs.				Long: W 104.492 deg. OR W -105 deg. 30 min. 28.85 secs.			
Job Purpose: Cement Surface Casing							
Well Type: Development Well				Job Type: Cement Surface Casing			
Sales Person: AARON, WESLEY				Srvc Supervisor: VIGIL, NICHOLAS		MBU ID Emp #: 443481	

Job Personnel

HES Emp Name	Exp Hrs	Emp #	HES Emp Name	Exp Hrs	Emp #	HES Emp Name	Exp Hrs	Emp #
DIRKS, RICHARD E	6.5	485940	MAYFIELD, BYRON L	6.5	528751	OTERI, VAUGHN Steeves	6.5	443828
VIGIL, NICHOLAS Joseph	6.5	443481						

Equipment

HES Unit #	Distance-1 way	HES Unit #	Distance-1 way	HES Unit #	Distance-1 way	HES Unit #	Distance-1 way
10972458	50 mile	11019275C	50 mile	11398490	50 mile	11562546C	50 mile
11566182	50 mile	12010168	50 mile				

Job Hours

Date	On Location Hours	Operating Hours	Date	On Location Hours	Operating Hours	Date	On Location Hours	Operating Hours
1/31/2013	6.5	2.4						

TOTAL Total is the sum of each column separately

Job				Job Times			
Formation Name	Top	Bottom		Date	Time	Time Zone	
Formation Depth (MD)				Called Out	31 - Jan - 2013	10:00	MST
Form Type		BHST		On Location	31 - Jan - 2013	02:00	MST
Job depth MD	1820. ft	Job Depth TVD		Job Started	31 - Jan - 2013	16:51	MST
Water Depth		Wk Ht Above Floor		Job Completed	31 - Jan - 2013	19:15	MST
Perforation Depth (MD)	From	To		Departed Loc	31 - Jan - 2013	20:30	MST

Well Data

Description	New / Used	Max pressure psig	Size in	ID in	Weight lbm/ft	Thread	Grade	Top MD ft	Bottom MD ft	Top TVD ft	Bottom TVD ft
12-1/4" Open Hole				12.25				100.	2147.		
16" Casing	Unknown		16.	15.5				.	100.		
9 5/8" Surface Casing	Unknown		9.625	8.921	36.		J-55	.	2137.		

Sales/Rental/3rd Party (HES)

Description	Qty	Qty uom	Depth	Supplier
CMT SURFACE CASING BOM	0	JOB		
SHOE,FLT,9-5/8 8RD,2-3/4 SUPER SEAL	1	EA		
CLR,FLT,9-5/8 8RD 29.3-40PPF,2-3/4	1	EA		
CENTRALIZER-9-5/8"-CSG-12 1/4"-HINGED	25	EA		
COLLAR-STOP-9 5/8"-FRICTION-HINGED	1	EA		
KIT,HALL WELD-A	1	EA		
MILEAGE FOR CEMENTING CREW,ZI	100	MI		
ZI FUEL SURCHG-CARS/PICKUPS<1 1/2TON	100	MI		

Tools and Accessories

Type	Size	Qty	Make	Depth	Type	Size	Qty	Make	Depth	Type	Size	Qty	Make
Guide Shoe					Packer					Top Plug			
Float Shoe					Bridge Plug					Bottom Plug			

Float Collar					Retainer					SSR plug set				
Insert Float										Plug Container				
Stage Tool										Centralizers				
Miscellaneous Materials														
Gelling Agt		Conc		Surfactant		Conc		Acid Type		Qty		Conc	%	
Treatment Fld		Conc		Inhibitor		Conc		Sand Type		Size		Qty		
Fluid Data														
Stage/Plug #: 1														
Fluid #	Stage Type	Fluid Name			Qty	Qty uom	Mixing Density lbm/gal	Yield ft ³ /sk	Mix Fluid Gal/sk	Rate bbl/min	Total Mix Fluid Gal/sk			
1	Fresh Water Spacer					bbl	8.33	.0	.0	.0				
2	SwiftCem B2	SWIFTCCEM (TM) SYSTEM (452990)			445.0	sacks	12.	2.56	15.12		15.12			
		15.12 Gal FRESH WATER												
3	SwiftCem B2	SWIFTCCEM (TM) SYSTEM (452990)			185.0	sacks	13.	2.01	11.01		11.01			
		11.01 Gal FRESH WATER												
Calculated Values					Pressures			Volumes						
Displacement	162	Shut In: Instant			Lost Returns		no	Cement Slurry		Pad				
Top Of Cement	Surface	5 Min			Cement Returns		67 bbl	Actual Displacement	162	Treatment				
Frac Gradient		15 Min			Spacers		40 bbl	Load and Breakdown		Total Job				
Rates														
Circulating		Mixing		6	Displacement		6	Avg. Job		6				
Cement Left In Pipe	Amount	0 ft	Reason	Shoe Joint										
Frac Ring # 1 @	ID		Frac ring # 2 @	ID		Frac Ring # 3 @	ID		Frac Ring # 4 @	ID				
The Information Stated Herein Is Correct					Customer Representative Signature									

The Road to Excellence Starts with Safety

Sold To #: 352431	Ship To #: 2976302	Quote #:	Sales Order #: 900181639
Customer: CONOCO/PHILLIPS COMPANY EBUSINESS		Customer Rep: Perez, Richard	
Well Name: Tebo 1	Well #: 1H	API/UWI #: 05-005-07199	
Field:	City (SAP): BENNETT	County/Parish: Arapahoe	State: Colorado
Legal Description:			
Lat: N 39.649 deg. OR N 39 deg. 38 min. 57.239 secs.		Long: W 104.492 deg. OR W -105 deg. 30 min. 28.85 secs.	
Contractor:	Rig/Platform Name/Num: H&P 280		
Job Purpose: Cement Surface Casing		Ticket Amount:	
Well Type: Development Well	Job Type: Cement Surface Casing		
Sales Person: AARON, WESLEY	Srv Supervisor: VIGIL, NICHOLAS	MBU ID Emp #: 443481	

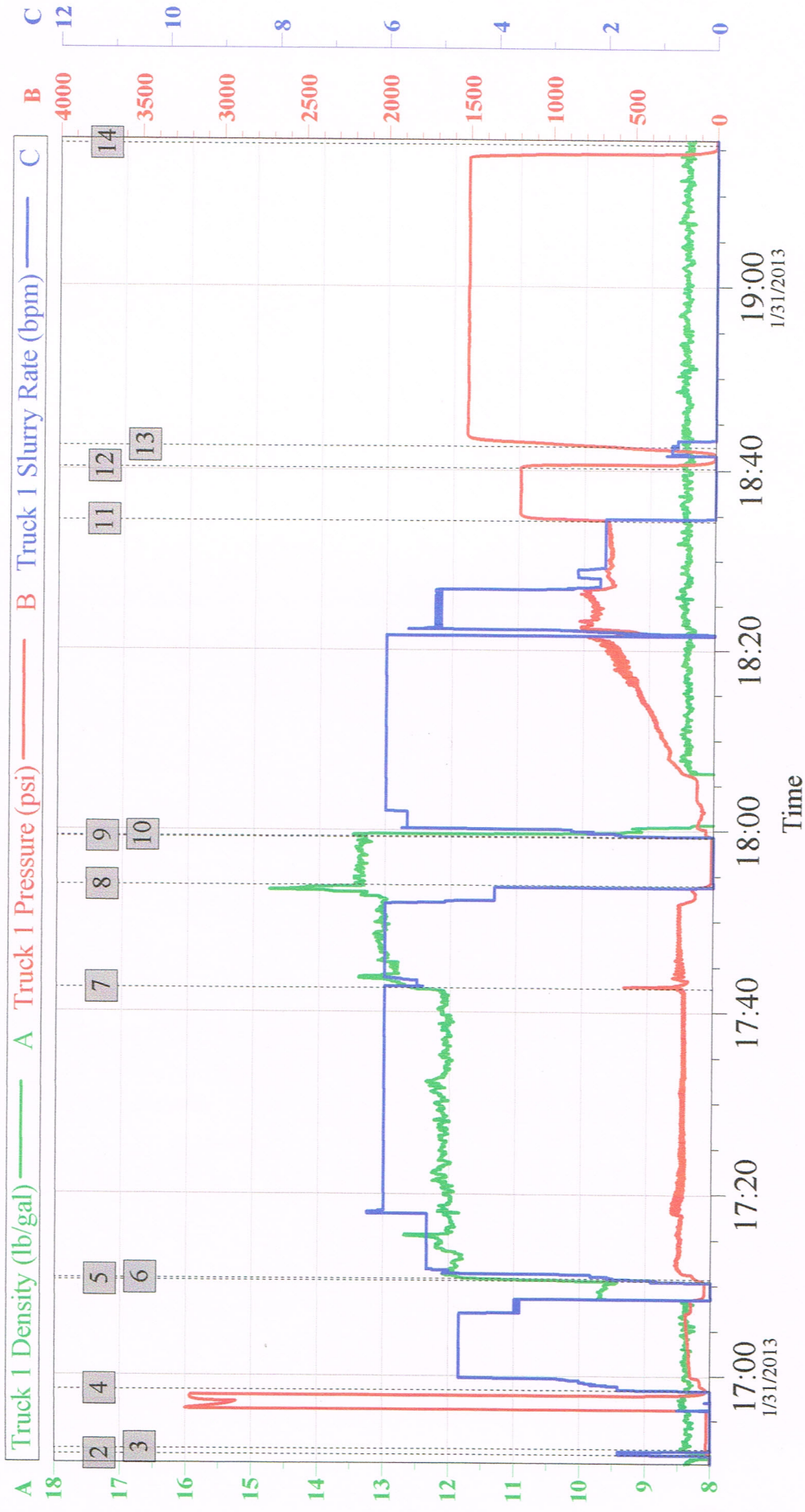
Activity Description	Date/Time	Cht #	Rate bbl/min	Volume bbl		Pressure psig		Comments
				Stage	Total	Tubing	Casing	
Arrive At Loc	01/31/2013 14:00							Well site assment, Hazard hunt, Water test, Rig up safety meeting
Start Job	01/31/2013 16:51							Pre job safety meeting
Test Lines	01/31/2013 16:51							Pressure tested lines to 3000 psi
Pump Spacer 1	01/31/2013 16:58			40				Rig water, Dye in the last 10 bbl
Drop Bottom Plug	01/31/2013 17:10							
Pump Lead Cement	01/31/2013 17:10		6	202.8			164.0	12 ppg SwiftCem (445 sks), Weight verified by scale
Pump Tail Cement	01/31/2013 17:42		6	66.2			197.0	13 ppg SwiftCem (185 sks), Weight verified by scale
Shutdown	01/31/2013 17:53							
Drop Top Plug	01/31/2013 17:59							Loaded plug while shut down
Pump Displacement	01/31/2013 17:59		6	80			428.0	Rig water
Bump Plug	01/31/2013 18:34		3.4	162			668.0	Calculated pressure to land was 456 psi + 500 over final lift, 67 bbl cement to surface
Check Floats	01/31/2013 18:40							Floats held
Pressure Up	01/31/2013 18:42							Pressured up casing to 1500 psi and held for 30 min.
End Job	01/31/2013 19:15							Rig down safety meeting

Sold To #: 352431

Ship To #: 2976302

Quote #:

Sales Order #: 900181639



Global Event Log

2	Start Job	16:51:05	3	Test Lines	16:51:46	4	Water Spacer	16:58:23
5	Drop Bottom Plug	17:10:27	6	12 ppg SwiftCem	17:10:39	7	13 ppg SwiftCem	17:42:36
8	Shutdown	17:53:51	9	Drop Plug	17:59:11	10	Pump Displacement	17:59:18
11	Bump Plug	18:34:22	12	Check Floats	18:40:09	13	Casing Test	18:42:31
14	End Job	19:15:27						