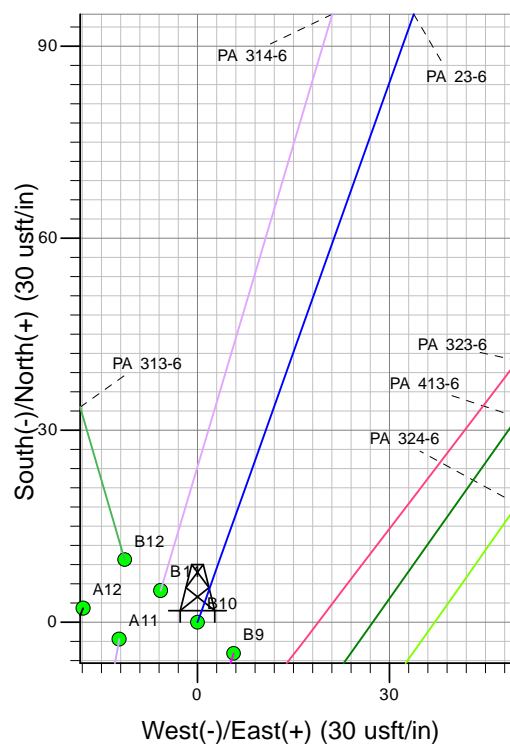
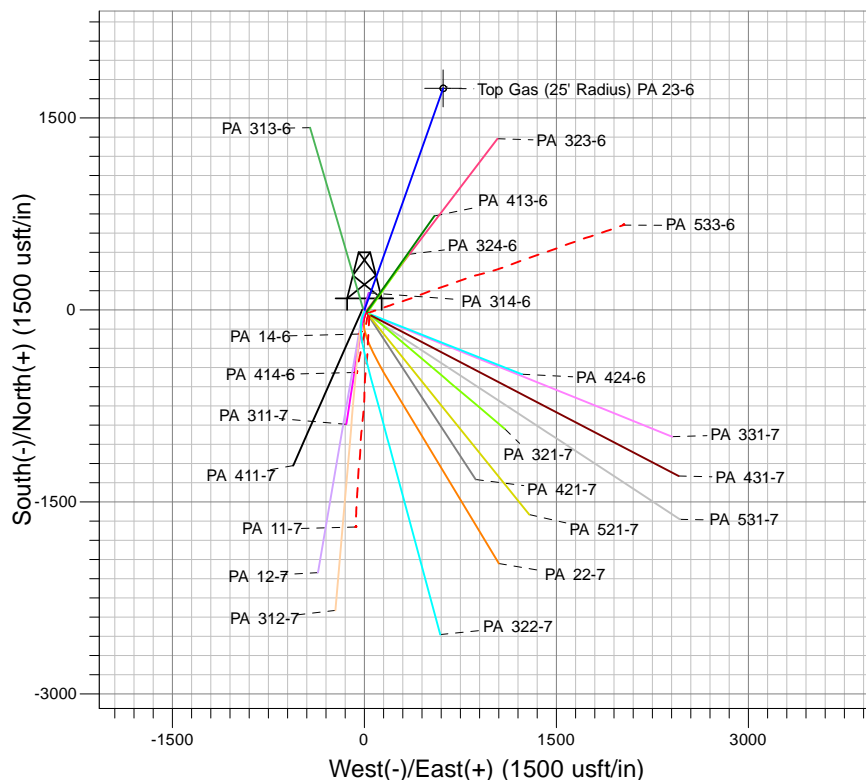
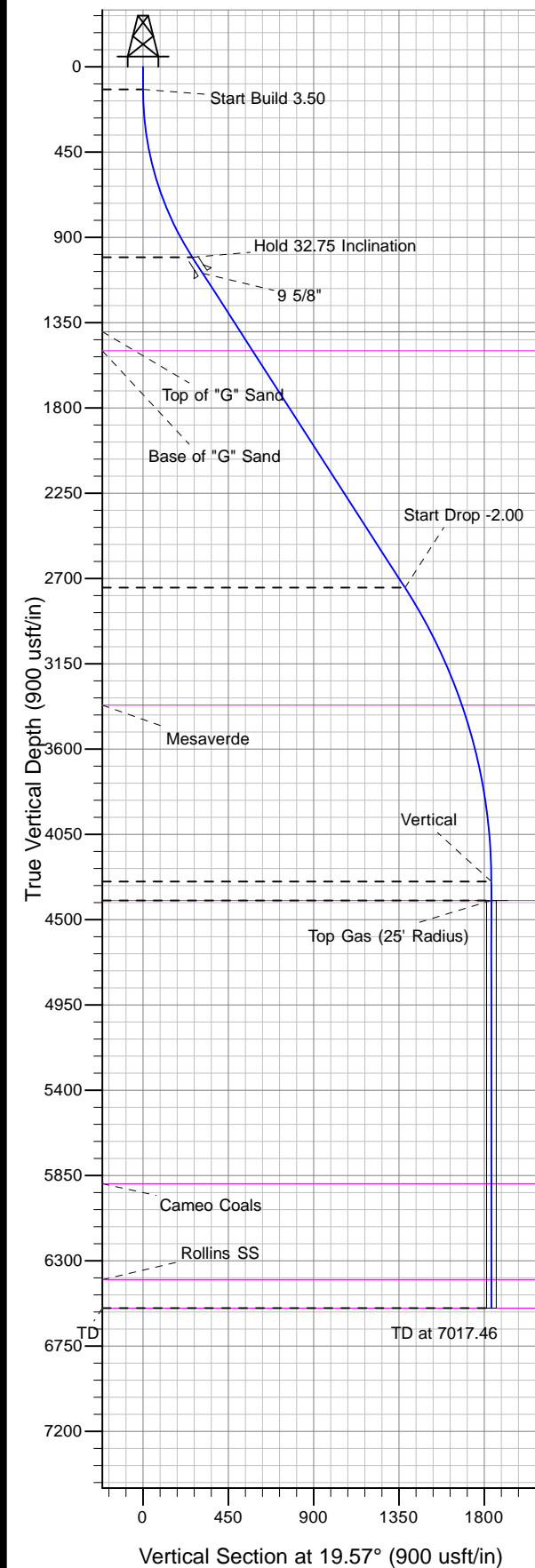




Well Name: PA 23-6
Surface Location: PA 14-6 Pad
North American Datum 1983 , US State Plane 1983 , Colorado Central Zone
Ground Elevation: 5153.00
+N/-S 0.00 +E/-W 0.00 Northing 1603172.40 Easting 2281092.30 Latitude 39.46182 Longitude -108.04660 Slot B10
KELLY BUSHING @ 5179.00usft (Nabors (26' RKB))



Project: PA 06-07S-095W
Site: PA 14-6 Pad
Well: PA 23-6
Plan #2 13Nov12 kjs

Azimuths to True North
Magnetic North: 11.47°
Magnetic Field
Strength: 53028.7nT
Dip Angle: 65.95°
Date: 12/31/2004
Model: IGRF2000

ANNOTATIONS

MD	Inc	Azi	TVD	+N/-S	+E/-W	Vsect	Departure	Annotation
120.00	0.00	0.00	120.00	0.00	0.00	0.00	0.00	Start Build 3.50
1055.78	32.75	19.57	1005.64	245.22	87.18	260.26	260.26	Hold 32.75 Inclination
3128.84	32.75	19.57	2749.12	1301.97	462.88	1381.80	1381.80	Start Drop -2.00
4766.46	0.00	0.00	4299.00	1731.11	615.44	1837.26	1837.26	Vertical
4866.46	0.00	0.00	4399.00	1731.11	615.44	1837.26	1837.26	Top Gas
7017.46	0.00	0.00	6550.00	1731.11	615.44	1837.26	1837.26	TD at 7017.46