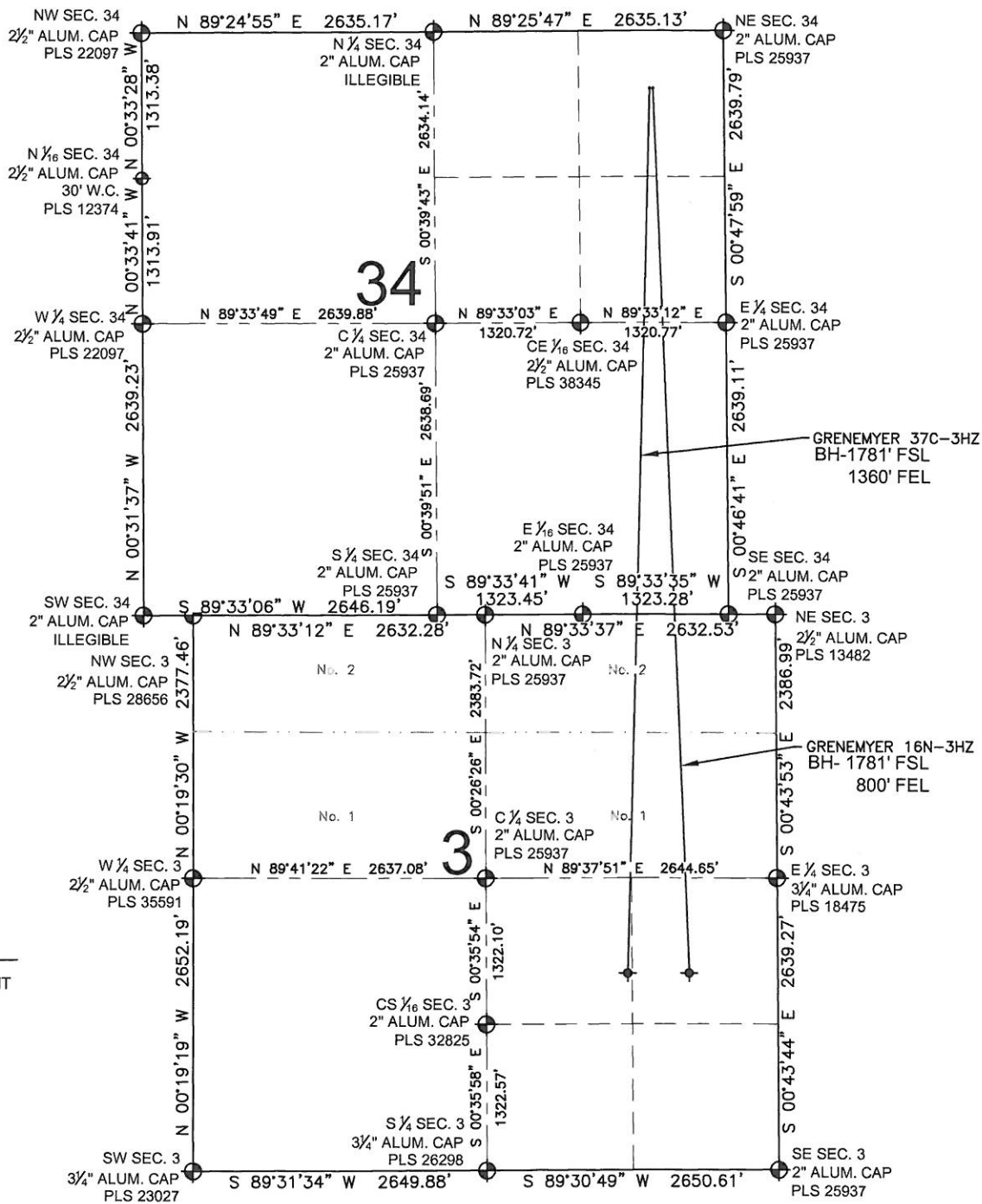


GRENEMYER 37C-3HZ MULTI-WELL PLAN

SECTION 34, TOWNSHIP 1 NORTH, RANGE 67 WEST, 6TH P.M.



LEGEND

- ⊕ = EXISTING MONUMENT
- = PROPOSED WELL
- ◊ = BOTTOM HOLE
- ◆ = EXISTING WELL
- BH= BOTTOM HOLE

NOTES:
 GRENEMYER 16N-3HZ TO BE AT 522' FNL, 646' FEL.
 BOTTOM HOLE AT 1781' FSL & 800' FEL. SEC. 3, T1S, R67W.
 GRENEMYER 37C-3HZ TO BE AT 522' FNL, 676' FEL.
 BOTTOM HOLE AT 1781' FSL & 1360' FEL. SEC. 3, T1S, R67W.

PREPARED BY:



KERR-MCGEE OIL & GAS ONSHORE LP

FIELD DATE: 06-19-13	SURFACE LOCATION: NE 1/4 NE 1/4, SEC. 34, T1N, R67W, 6TH P.M.
DRAWING DATE: 08-12-13	WELD COUNTY, COLORADO

