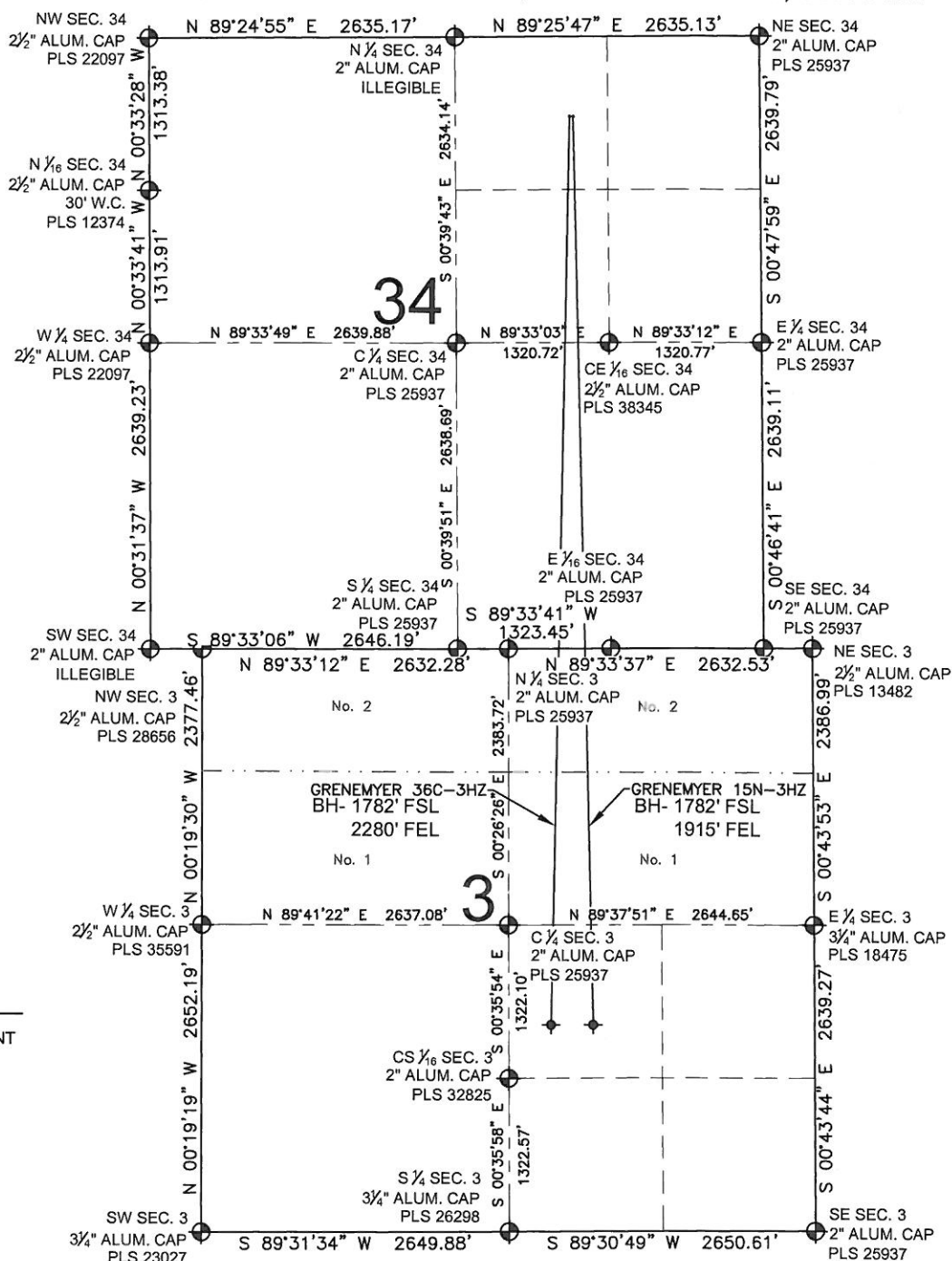


GRENNEMYER 36C-3HZ MULTI-WELL PLAN

SECTION 34, TOWNSHIP 1 NORTH, RANGE 67 WEST, 6TH P.M.



PREPARED BY:

PFS

Petroleum Field Services, LLC
1801 W. 13th Ave.
Denver, CO 80204

KERR-MCGEE OIL & GAS ONSHORE LP

FIELD DATE:

06-19-13

DRAWING DATE:

08-12-13

SURFACE LOCATION:

NW 1/4 NE 1/4, SEC. 34, T1N, R67W, 6TH P.M.

WELD COUNTY, COLORADO