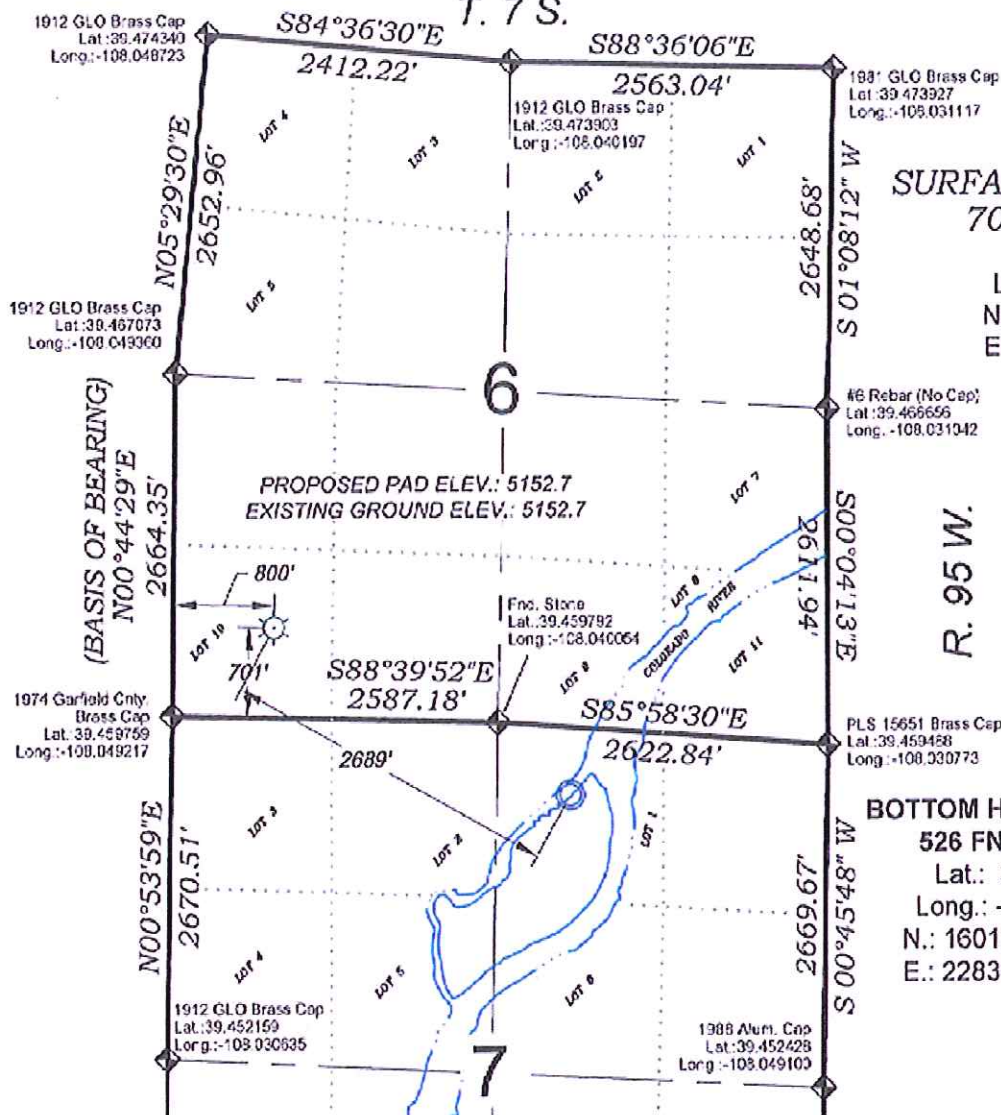


## Exxon Mobile Corp. PA 431-7

T. 7 S.



### SURFACE HOLE LOCATION

701 FSL, 800 FWL

Lat.: 39.461694 °

Long.: -108.046421 °

N.: 1603126.6 (COSP)

E.: 2281142.6 (COSP)

#6 Rebar (No Cap)  
Lat: 39.466656  
Long: -108.031042

R. 95 W.

### BOTTOM HOLE LOCATION

526 FNL, 2040 FEL

Lat.: 39.458279°

Long.: -108.037977°

N.: 1601816.8 (COSP)

E.: 2283491.2 (COSP)

SEE CONSTRUCTION LAYOUT  
PLAT FOR VISIBLE IMPROVEMENTS  
WITHIN 400' OF THIS LOCATION

### SURVEYORS STATEMENT

I, MICHAEL J. LANGHORNE, A REGISTERED LAND SURVEYOR IN THE STATE OF COLORADO DO HEREBY CERTIFY THAT THE SURVEY SHOWN HEREON WAS PREPARED UNDER MY DIRECT SUPERVISION AND HAS BEEN STAKED ON THE GROUND AS SHOWN ON THE PLAT AND CHECKING THAT THIS MAP IS A TRUE REPRESENTATION THEREOF.

MICHAEL J. LANGHORNE, COLORADO REGISTRATION NO. 36572  
FOR AND ON BEHALF OF  
BOOKCLIFF SURVEY SERVICES, INC.

## REFERENCES

- 1) DEPENDENT RESURVEY T. 7 S., R. 95 W., 6 th P.M (GLO PLAT)  
2) U.S.G.S. QUAD: PARACHUTE, CO



SURVEY DATE: 6/19/08  
MAP DATE: 1/7/13  
SCALE: 1" = 1500'  
PLAT: 1 of 1  
PROJECT: Valley

- LEGEND -

FIELD LOCATED SECTION  
MONUMENTS AS DESCRIBEDFIELD SURVEYED  
WELL LOCATION

### CALCULATED BOTTOM HOLE LOCATION

CALCULATED SECTION  
CORNER LOCATION

## NOTES

- 1) ELEVATIONS BASED ON N.A. V.D. 1988 PUBLISHED COORDINATES.
- 2) LATITUDES AND LONGITUDES ARE BASED ON NAD 83, PUBLISHED COORDINATES
- 3) STATE PLANE COORDINATES ARE BASED ON COLORADO CENTRAL ZONE, U.S. SURVEY FEET.
- 4) ELEVATION MASK SET TO 15°
- 5) GPS OPERATOR J. KIRKPATRICK, OBSERVED A PDOP 3.4 CH SURVEY POINT NUMBER 28507.
- 6) SURFACE AND BOTTOM HOLE LOCATIONS ARE MEASURED 90° FROM SECTION LINES.

**WELL LOCATION PLAT Prepared for:**  
**WPXENERGY.** WPX Energy Rocky Mountain, LLC

SW1/4 SW1/4, SECTION 6  
T. 7 S., R. 95 W. of the 6th. P.M.  
GARFIELD COUNTY, COLORADO