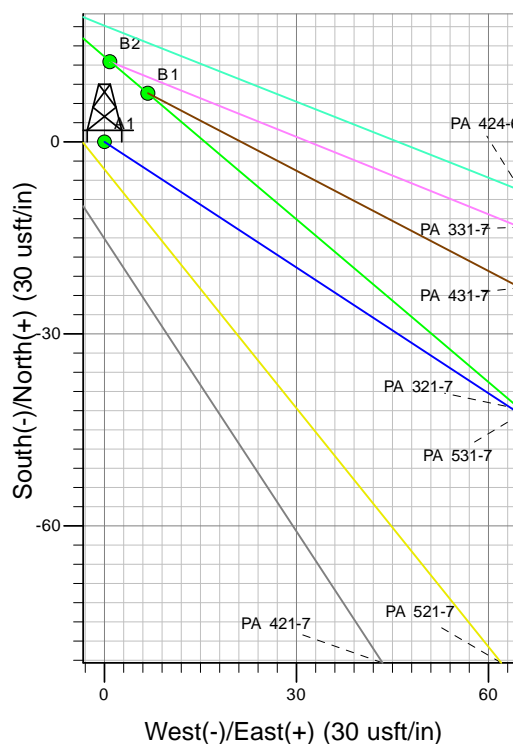
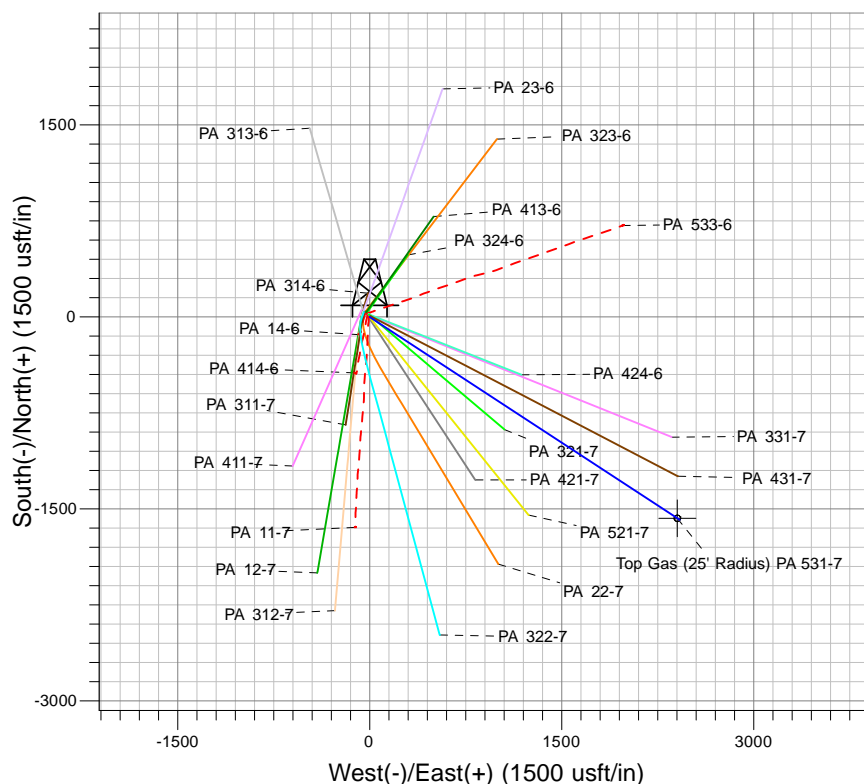
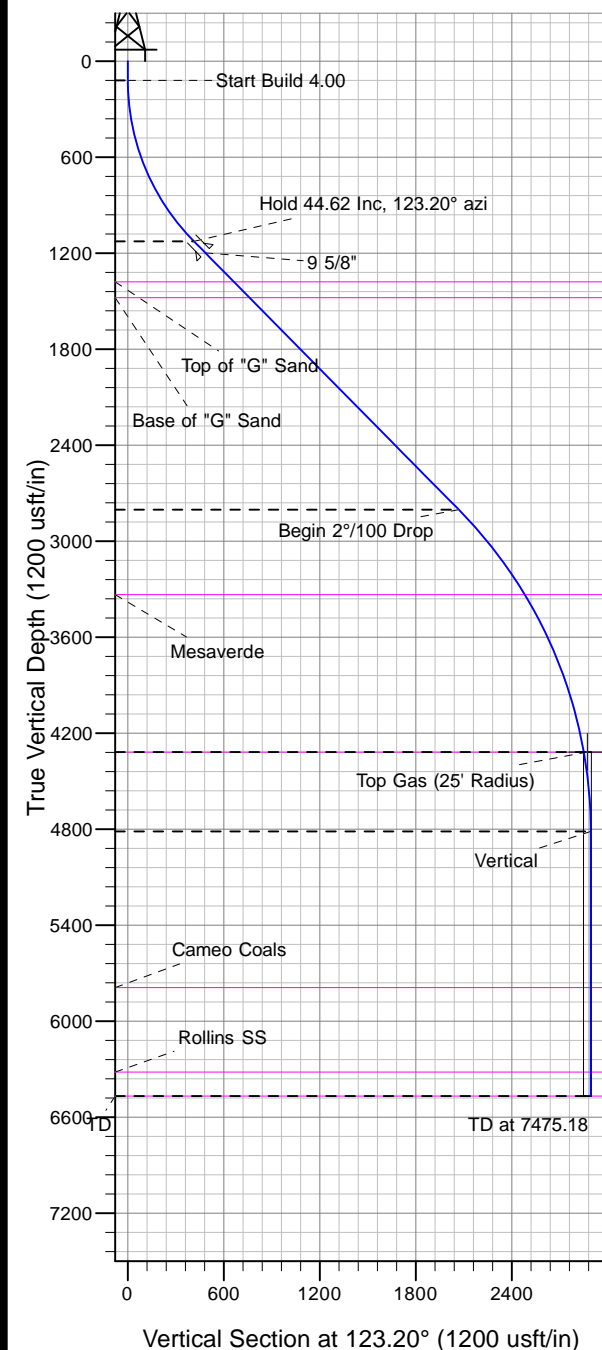




Well Name: PA 531-7
Surface Location: PA 14-6 Pad
North American Datum 1983 , US State Plane 1983, Colorado Central Zone
Ground Elevation: 5153.00

| +N/-S | +E/-W | Northing | Easting | Latitude | Longitude | Slot |
|-------|-------|------------|------------|----------|------------|------|
| 0.00 | 0.00 | 1603119.20 | 2281135.80 | 39.46167 | -108.04644 | A1 |

KELLY BUSHING @ 5179.00usft (Nabors (26' RKB))



Project: PA 06-07S-095W
Site: PA 14-6 Pad
Well: PA 531-7
Plan #2 13Nov12 kjs

Azimuths to True North
Magnetic North: 10.63°
Magnetic Field
Strength: 52475.1snT
Dip Angle: 65.77°
Date: 4/17/2009
Model: IGRF2005

ANNOTATIONS

| MD | Inc | Azi | TVD | +N/-S | +E/-W | Vsect | Departure | Annotation |
|---------|-------|--------|---------|----------|---------|---------|-----------|-----------------------------|
| 120.00 | 0.00 | 0.00 | 120.00 | 0.00 | 0.00 | 0.00 | 0.00 | Start Build 4.00 |
| 1235.45 | 44.62 | 123.20 | 1126.08 | -226.03 | 345.43 | 412.81 | 412.81 | Hold 44.62 Inc, 123.20° azi |
| 3591.75 | 44.62 | 123.20 | 2803.30 | -1132.24 | 1730.29 | 2067.82 | 2067.82 | Begin 2°/100 Drop |
| 5322.65 | 10.00 | 123.20 | 4318.00 | -1560.48 | 2384.72 | 2849.91 | 2849.91 | Top Gas |
| 5822.65 | 0.00 | 0.00 | 4815.47 | -1584.31 | 2421.14 | 2893.43 | 2893.43 | Vertical |
| 7475.18 | 0.00 | 0.00 | 6468.00 | -1584.31 | 2421.14 | 2893.43 | 2893.43 | TD at 7475.18 |