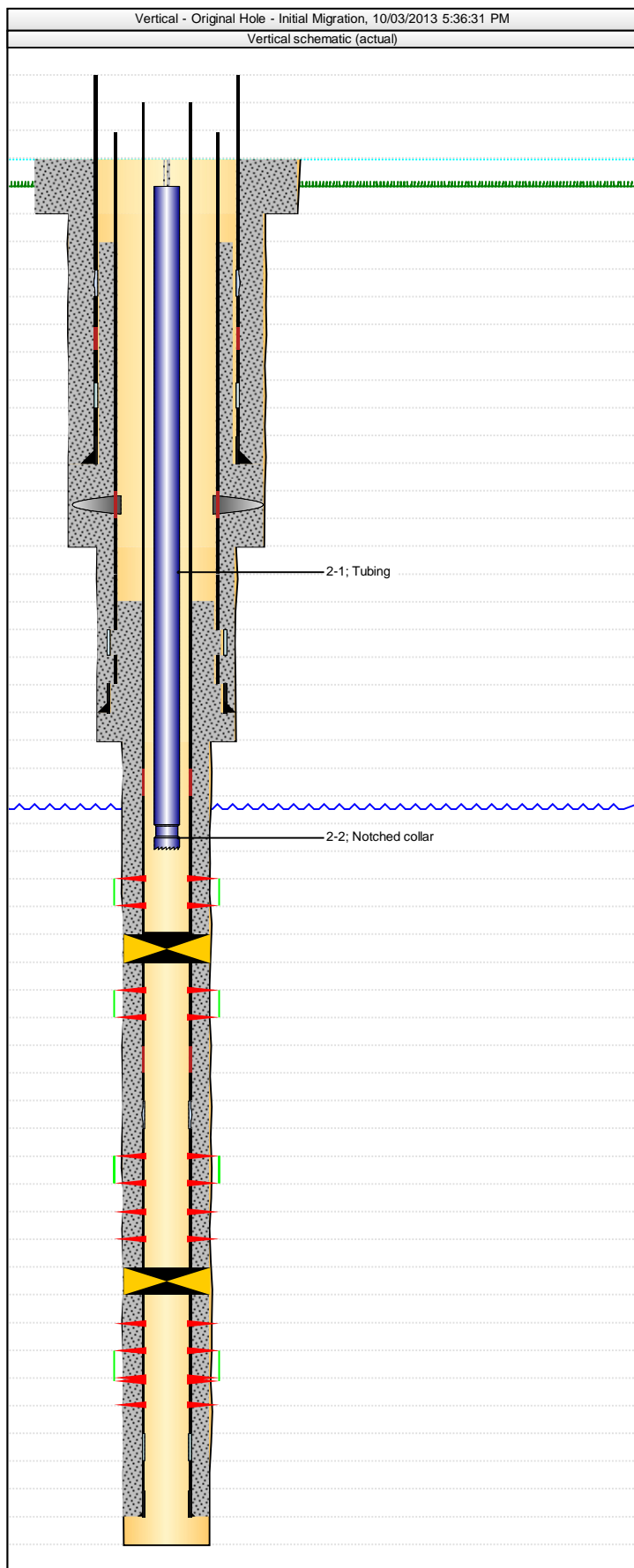




# Final Well Report Detailed (graphic)

## Well Name: Left Fork 6502

API #	Well Type	Business Unit	SBU	Area	Pad	State	County/Parish
05103104080000	Gas	Southern Rockies	North Piceance	Left Fork		CO	RIO BLANCO



### Well Header Setup

Well Name		API #	
Left Fork 6502		05103104080000	
Original KB Elevation (ft)	Ground Elevation (ft)	Spud Date	Final Rig Relea..
7,080.05	7,060.37	10/29/2004	01/12/2005
Surface Legal Location		Latitude (decimal) (°)	Longitude (decimal) (°)
		39.86718633	-108.47428440

### Wellbore Sections Setup

Wellbore Type		Kick Off Depth (ftKB)		VS Dir (°)			
Original Hole - Initial Migration							
Section Des		Hole Size (in)		Act Top (ftKB)		Act Btm (ftKB)	
Conductor		24		0.0		150.0	
Surface		17 1/2		150.0		2,485.0	
Intermediate		12 1/4		2,485.0		5,675.0	
Production		7 7/8		5,675.0		11,480.0	

### Plug Back Total Depths

Date	Depth (ftKB)	Method	Com
04/27/2005	10,883.0	Casing	Abandoned Mancos B (11132-11300)
09/20/2007	7,870.0	Casing	Abandoned Mancos B; Sego was squeezed off 8/29/2005

### Casing Data

#### Conductor

Casing Description			Run Date		Set Depth (ftKB)	
Conductor					150.0	
Item Des	OD (in)	ID (in)	Wt (lb/ft)	Grade	Len (ft)	
Casing Joints					150.00	

#### Surface

Casing Description			Run Date		Set Depth (ftKB)	
Surface					1,360.0	
Item Des	OD (in)	ID (in)	Wt (lb/ft)	Grade	Len (ft)	
Casing Joints	13 3/8		11.00	J-55	530.04	
Stage Collar	13 3/8		1.00		3.10	
Casing Joints	13 3/8		18.00	J-55	750.04	
Parasite Collar	13 3/8		1.00		1.40	
Casing Joints	13 3/8		1.00	J-55	44.51	
Float Collar	13 3/8		1.00		1.20	
Casing Joints	13 3/8		1.00	J-55	44.71	
Float Shoe	13 3/8		1.00		1.65	

#### Intermediate

Casing Description			Run Date		Set Depth (ftKB)
Intermediate					5,667.0
Item Des	OD (in)	ID (in)	Wt (lb/ft)	Grade	Len (ft)
Casing Joints	9 5/8	8.921	36.00	J55	1,482.40
Packer DV tool	9 5/8				28.70
Casing Joints	9 5/8	8.921	36.00	J55	2,466.22
Casing Joints	9 5/8		43.50	N-80	1,639.96
Float Collar	11				1.35
Casing Joints	9 5/8		43.50	N-80	47.17
Guide Shoe	11				1.80

#### Production

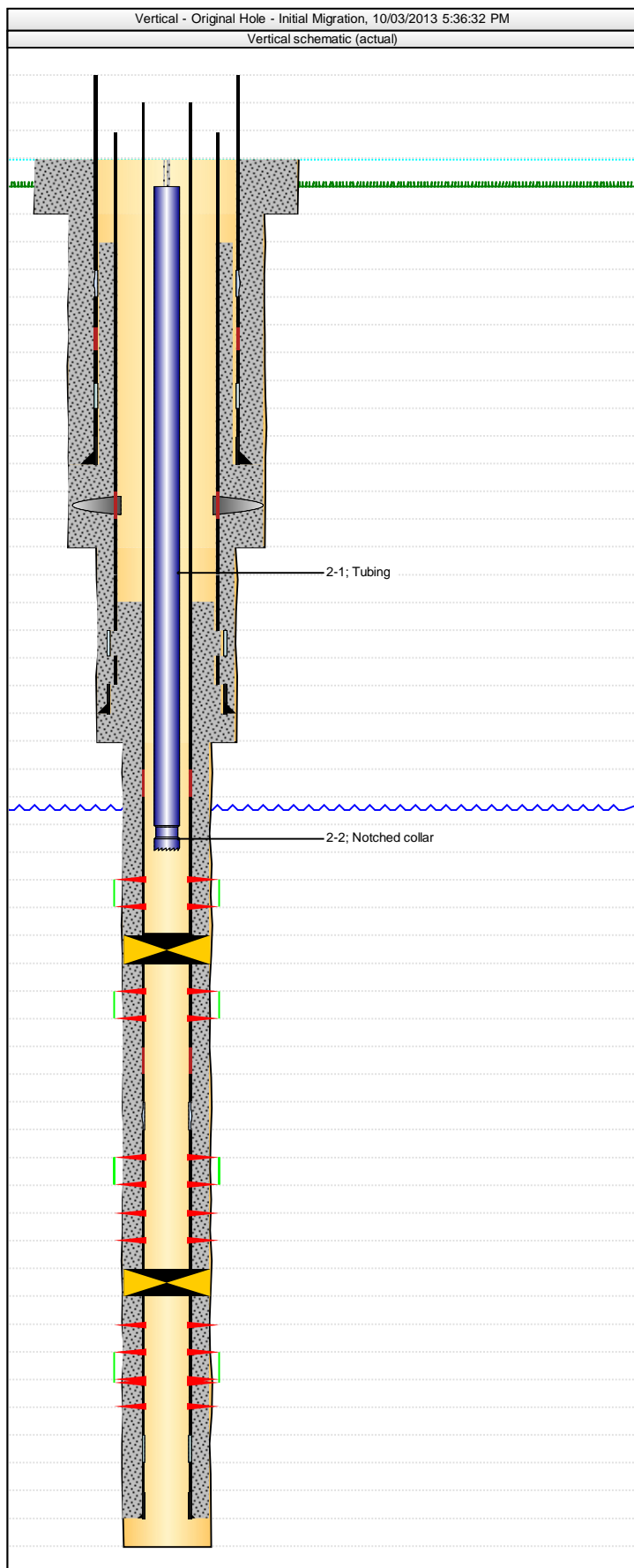
Casing Description			Run Date		Set Depth (ftKB)	
Production					11,476.0	
Item Des	OD (in)	ID (in)	Wt (lb/ft)	Grade	Len (ft)	
Casing Joints	4 1/2	4.000	11.60	P-110	6,447.66	
Marker Joint	4 1/2	4.000	11.60	P-110	22.00	
Casing Joints	4 1/2	4.000	11.60	P-110	2,060.29	
Marker Joint	4 1/2	4.000	11.60	P-110	21.93	
Casing Joints	4 1/2	4.000	11.60	P-110	947.54	
Stage Tool	4 1/2	4.000	11.60	P-110	2.11	
Casing Joints	4 1/2	4.000	11.60	P-110	1,933.12	



# Final Well Report Detailed (graphic)

## Well Name: Left Fork 6502

API #	Well Type	Business Unit	SBU	Area	Pad	State	County/Parish
05103104080000	Gas	Southern Rockies	North Piceance	Left Fork		CO	RIO BLANCO



Item Des	OD (in)	ID (in)	Wt (lb/ft)	Grade	Len (ft)
Float Collar	4 1/2	4.000	11.60	P-110	1.23
Casing Joints	4 1/2	4.000	11.60	P-110	43.02
Float Shoe	4 1/2	4.000	11.60	P-110	1.45

### Cement Data

#### Conductor, 150.0ftKB Proposed? No

Description	String	Wellbore	Type
Conductor Cement	Conductor, 150.0ftKB Proposed? No	Original Hole - Initial Migration	Casing

Stg #	Description	Top (ftKB)	Btm (ftKB)	Full Return?
1	Conductor	0.0	150.0	

Sequence	Fluid Des	Amount (sacks)	Class
Fill	10 yds +/-		

#### Production, 11,476.0ftKB Proposed? No

Description	String	Wellbore	Type
Production Casing Cement	Production, 11,476.0ftKB Proposed? No	Original Hole - Initial Migration	Casing

Stg #	Description	Top (ftKB)	Btm (ftKB)	Full Return?
1	Production	4,600.0	11,476.0	

Sequence	Fluid Des	Amount (sacks)	Class
2nd. Stage	35:65 Poz G	150	
2nd Stage Tail	35:65 Poz G	950	
1st Stage	35:65 Poz G	360	

#### Surface, 1,360.0ftKB Proposed? No

Description	String	Wellbore	Type
Surface Casing Cement	Surface, 1,360.0ftKB Proposed? No	Original Hole - Initial Migration	Casing

Stg #	Description	Top (ftKB)	Btm (ftKB)	Full Return?
1	Surface	0.0	1,360.0	

Sequence	Fluid Des	Amount (sacks)	Class
Fill	65:35 POZ	245	
Tail	10-2 RFC	630	
Tail	Class G + 3% CaCl	240	

#### Intermediate, 5,667.0ftKB Proposed? No

Description	String	Wellbore	Type
Intermediate 1 Casing Cement	Intermediate, 5,667.0ftKB Proposed? No	Original Hole - Initial Migration	Casing

Stg #	Description	Top (ftKB)	Btm (ftKB)	Full Return?
1	Intermediate	500.0	5,667.0	

Sequence	Fluid Des	Amount (sacks)	Class
Tail	Tail	252	
Scavenger	Pumped ahead flush		
Fill	Lead	642	
Tail	Tail	303	
Fill	Lead	449	

### Tubing Data

Tubing Description	Tubing Set Date	Set Depth (ftKB)
Tubing from Migration	01/10/2006	10,646.0

Item Des	OD (in)	ID (in)	Len (ft)
Tubing Hanger	4 1/2	2.375	0.90
			19.00
Collar			0.40
Tubing	2 3/8	1.995	10,617.22
Tubing	2 3/8	1.995	6.12
Nipple - Profile	2 3/8	1.875	1.22
Nipple - Profile	2 3/8	1.780	1.08

Tubing Description	Tubing Set Date	Set Depth (ftKB)
Tubing from Migration	10/03/2007	7,721.0

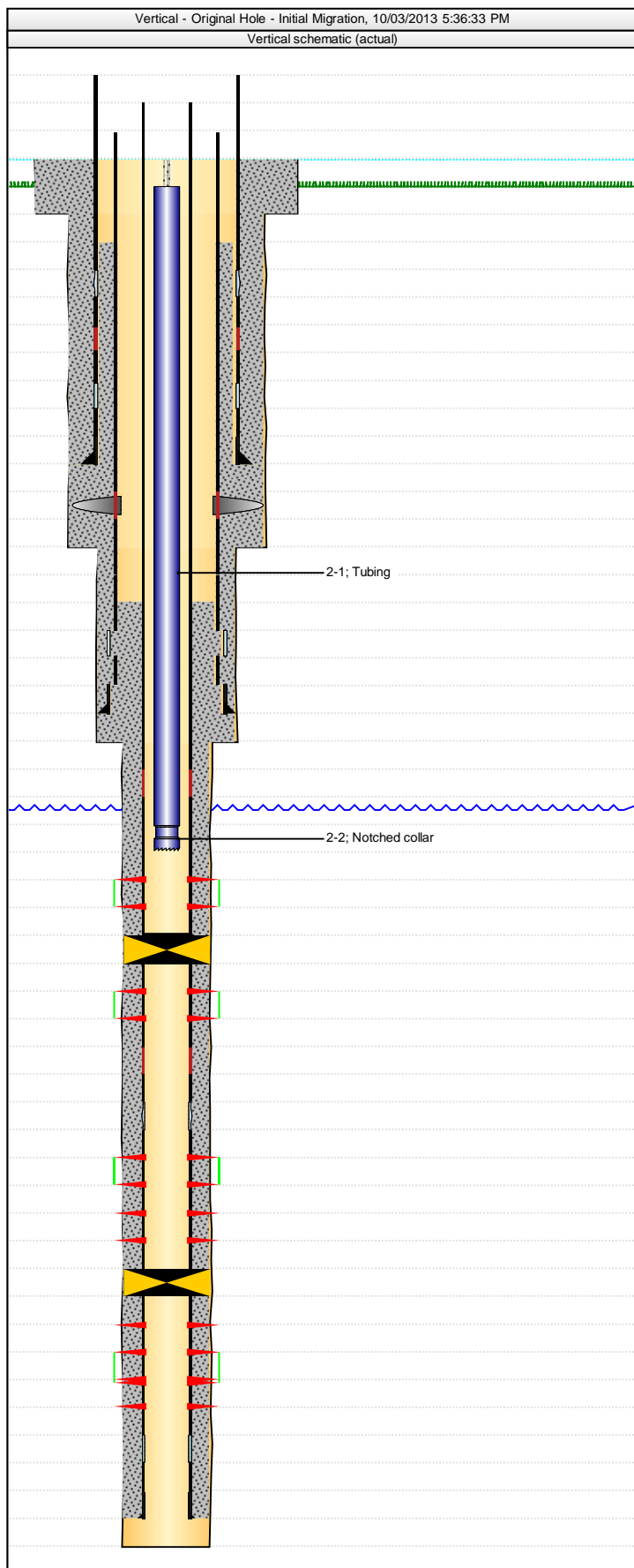
Item Des	OD (in)	ID (in)	Len (ft)
Tubing	2 3/8	1.995	7,700.31
Notched collar	2 3/8	1.995	1.50



# Final Well Report Detailed (graphic)

Well Name: Left Fork 6502

API #	Well Type	Business Unit	SBU	Area	Pad	State	County/Parish
05103104080000	Gas	Southern Rockies	North Piceance	Left Fork		CO	RIO BLANCO



## Rod Data

Rod Description	Run Date	Set Depth (ftKB)
Item Des	OD (in)	Len (ft)

## Zones

Zone Name	Wellbore	Top Depth (ftKB)	Btm (ftKB)
Rollins	Original Hole - Initial Migration	7,742.0	7,810.0
Cur Stat Date	Current Status	Formation(s)	
Zone Name	Wellbore	Top Depth (ftKB)	Btm (ftKB)
Sego	Original Hole - Initial Migration	8,337.0	8,907.0
Cur Stat Date	Current Status	Formation(s)	
08/31/2005	Abandoned		
Zone Name	Wellbore	Top Depth (ftKB)	Btm (ftKB)
Mancos A	Original Hole - Initial Migration	9,558.0	10,494.0
Cur Stat Date	Current Status	Formation(s)	
Zone Name	Wellbore	Top Depth (ftKB)	Btm (ftKB)
Mancos B	Original Hole - Initial Migration	10,495.0	11,161.0
Cur Stat Date	Current Status	Formation(s)	
09/20/2007	Abandoned		

## Perforation Data

Stage #	Type	Top Depth (ftKB)	Bottom Depth (ftKB)	Zone
5	Perforated	7,752.0	7,789.0	Rollins, Original Hole - Initial Migration
4	Remedial Cmt Squeeze	8,344.0	8,509.0	Sego, Original Hole - Initial Migration
3	Perforated	10,642.0	10,660.0	Mancos B, Original Hole - Initial Migration
2	Perforated	10,678.0	10,769.0	Mancos B, Original Hole - Initial Migration
1 re-perf	Perforated	11,132.0	11,300.0	Mancos B, Original Hole - Initial Migration
1	Perforated	11,136.0	11,299.0	Mancos B, Original Hole - Initial Migration

## Other In Hole

OD (in)	Des	Top (ftKB)	Btm (ftKB)	ID (in)	Make	Model
7 7/8	Bridge Plug - Permanent	10,883.0	10,890.0			
7 7/8	Bridge Plug - Permanent	7,870.0	7,877.0			

## Wellhead Description

Install Date	Type	Make	Size (in)	WP (psi)	
Make	Model	Section	Top Sz (in)	Btm Sz (in)	WP (psi)

## Schematic Annotations

Depth (ftKB)	Annotation

## General Notes

Date	Com