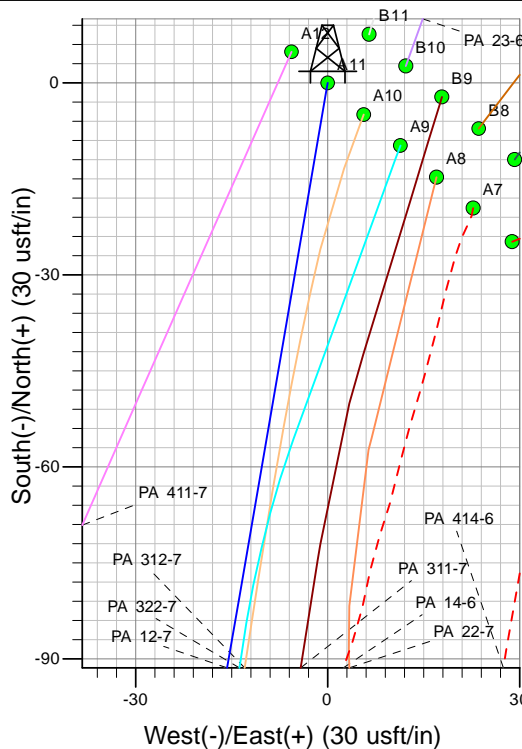
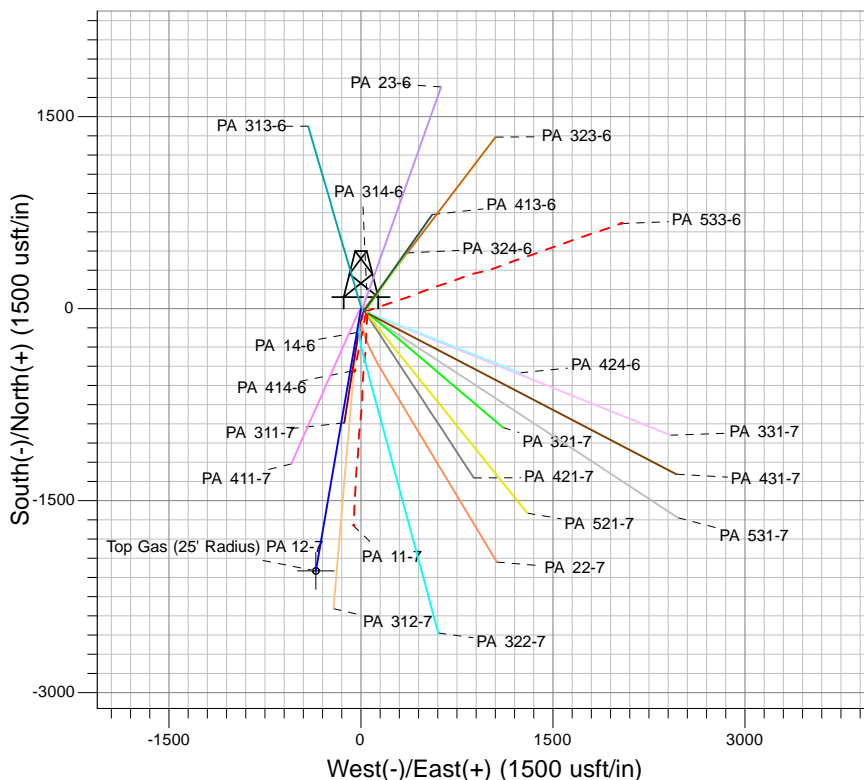
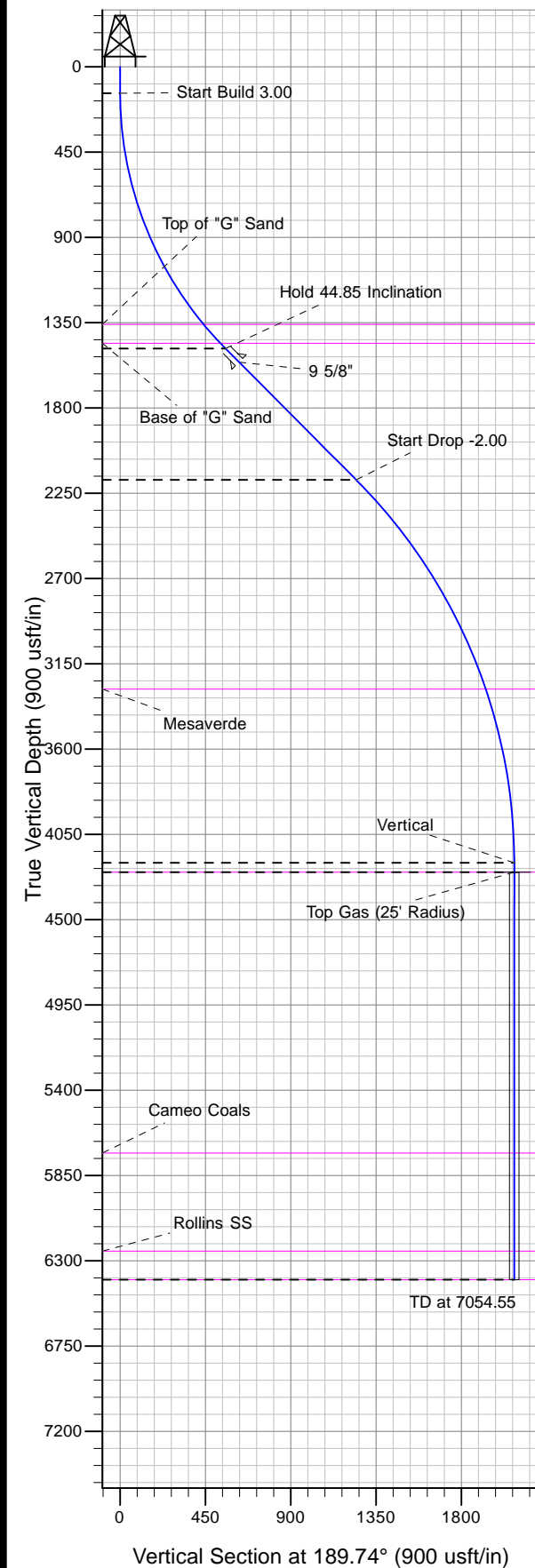




Well Name: PA 12-7
Surface Location: PA 14-6 Pad
North American Datum 1983 , US State Plane 1983 , Colorado Central Zone
Ground Elevation: 5153.00

| +N/-S | +E/-W | Northing | Easting | Latitude | Longitude | Slot |
|-------|-------|------------|------------|----------|------------|------|
| 0.00 | 0.00 | 1603170.10 | 2281080.00 | 39.46181 | -108.04665 | A11 |

KELLY BUSHING @ 5179.00usft (Nabors (26' RKB))



Project: PA 06-07S-095W
Site: PA 14-6 Pad
Well: PA 12-7
Plan #2 13Nov12 kjs

Compass rose showing True North (T) and Magnetic North (M).
Azimuths to True North
Magnetic North: 10.63°
Magnetic Field
Strength: 52475.1snT
Dip Angle: 65.77°
Date: 4/17/2009
Model: IGRF2005

ANNOTATIONS

| MD | Inc | Azi | TVD | +N/-S | +E/-W | Vsect | Departure | Annotation |
|---------|-------|--------|---------|----------|---------|---------|-----------|------------------------|
| 140.00 | 0.00 | 0.00 | 140.00 | 0.00 | 0.00 | 0.00 | 0.00 | Start Build 3.00 |
| 1635.05 | 44.85 | 189.74 | 1486.97 | -547.87 | -94.07 | 555.89 | 555.89 | Hold 44.85 Inclination |
| 2611.97 | 44.85 | 189.74 | 2179.55 | -1226.93 | -210.67 | 1244.88 | 1244.88 | Start Drop -2.00 |
| 4854.55 | 0.00 | 0.00 | 4200.00 | -2048.73 | -351.78 | 2078.72 | 2078.72 | Vertical |
| 4904.55 | 0.00 | 0.00 | 4250.00 | -2048.73 | -351.78 | 2078.72 | 2078.72 | Top Gas |
| 7054.55 | 0.00 | 0.00 | 6400.00 | -2048.73 | -351.78 | 2078.72 | 2078.72 | TD at 7054.55 |