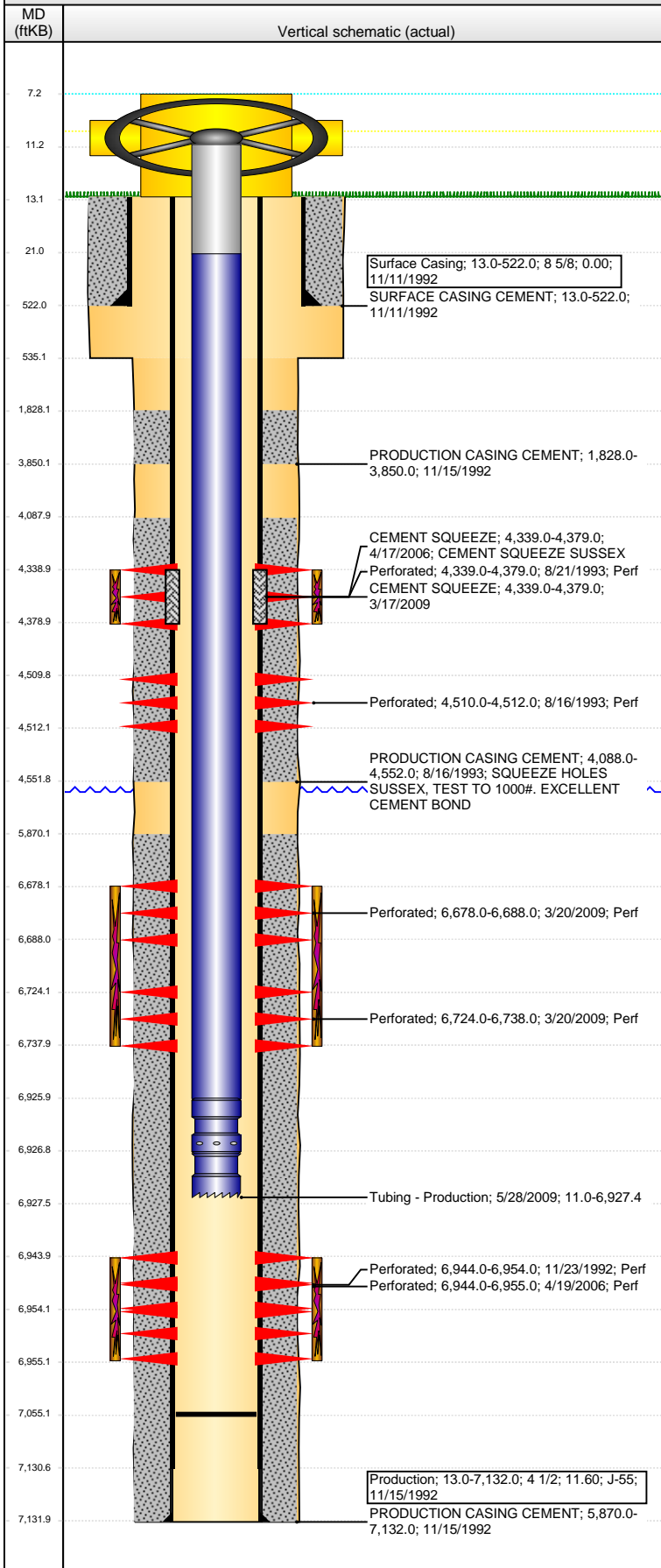


Well Name: CALLY WHITE D15-07

VERTICAL - ORIGINAL HOLE, 10/3/2013 10:18:41 AM



Well Header

API 05-123-16370	Business Unit WATTENBERG	District 15	Well Config VERTICAL
Original KB Elevation (ft) 4,809.00	KB - GL / MSL (ftKB) 13.00	Spud Date 11/11/1992	P & A Date
Comment			

Directions To Well

RDS 53 & 34, EAST ON MAIN RD 2 6/10 MILES, WEST 3/10, SOUTH INTO

Congressional Location

Quarter 1	Quarter 2	Quarter 3	Quarter 4	Section	Township	Twnshp N...	Range	Rng E/W Dir
		SW	NE	15	3	N	64	W

Bottom Hole Location

North-South Distance (ft)	From N or S Line	East-West Distance (ft)	From E or W Line
---------------------------	------------------	-------------------------	------------------

Plug Back Total Depths

Date	Depth (ftKB)	Method	Com
11/15/1992	7,092.0		
11/20/1992	7,057.0		
4/11/2006	7,055.0		
5/27/2009	6,634.0	TUBING TALLY	
5/28/2009	7,055.0	TUBING TALLY	

Wellbore Sections

Section Des	Size (in)	Act Top (ftKB)	Act Btm (ftKB)
SURFACE	12 1/4	13.0	535.0
PRODUCTION	7 7/8	535.0	7,132.0

Zone Statuses

Zone Name	Status Date	Status	Job
CODELL	3/17/1993	PR	DRILLING/COMPLETION - ORIGINAL, 11/11/1992 00:00
CODELL	8/13/1993	SI	RECOMPLETION, 8/13/1993 00:00
CODELL	5/16/1996	PR	RECOMPLETION, 8/13/1993 00:00
CODELL	5/15/2006	PR	RE-FRAC, 4/11/2006 00:00
CODELL	6/3/2009	PR	RECOMPLETION, 3/11/2009 06:00
SUSSEX	10/7/1993	PR	RECOMPLETION, 8/13/1993 00:00
SUSSEX	5/16/1996	PR	RECOMPLETION, 8/13/1993 00:00
SUSSEX	4/17/2006	AB	RE-FRAC, 4/11/2006 00:00
NIOBRARA	4/7/2009	PR	RECOMPLETION, 3/11/2009 06:00
NIOBRARA	6/3/2009	PR	RECOMPLETION, 3/11/2009 06:00

Casing Strings

Surface Casing, 522.0ftKB

Casing Description	Run Date	OD (in)	Wt/Len (l...)	Grade	Top (ftKB)	MD (ftKB)
Surface Casing	11/11/1992	8 5/8			13.0	522.0

Production, 7,132.0ftKB

Casing Description	Run Date	OD (in)	Wt/Len (l...)	Grade	Top (ftKB)	MD (ftKB)
Production	11/15/1992	4 1/2	11.60	J-55	13.0	7,132.0

Cement

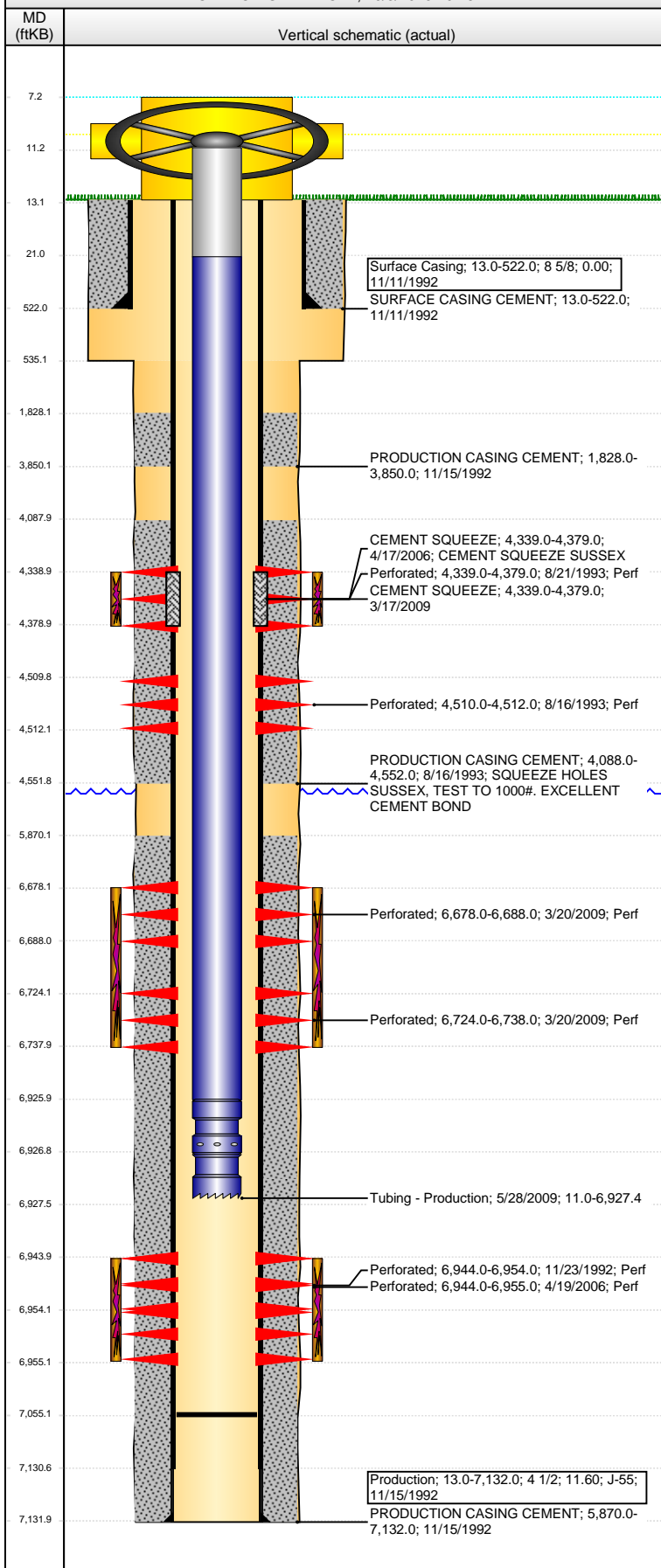
Description	Top Depth (ftKB)	Bottom Depth (ftKB)
SURFACE CASING CEMENT	13.0	522.0
PRODUCTION CASING CEMENT	1,828.0	3,850.0
PRODUCTION CASING CEMENT	5,870.0	7,132.0
PRODUCTION CASING CEMENT	4,088.0	4,552.0
CEMENT SQUEEZE	4,339.0	4,379.0
CEMENT SQUEEZE	4,339.0	4,379.0

Tubing Components

Item Des	OD (in)	Wt (lb/ft)	Grade	Jts	Len (ft)	Btm (ftKB)	Btm (TVD) (ftKB)
Tubing Pup Joint	2 3/8	4.70	J-55	1	10.00	21.0	
Tubing	2 3/8	4.70	J-55	221	6,904.76	6,925.8	
Pump Seating Nipple	2 3/8	4.70	J-55	1	1.10	6,926.9	
Notched collar	2 3/8	4.70	J-55	1	0.55	6,927.4	

Well Name: CALLY WHITE D15-07

VERTICAL - ORIGINAL HOLE, 10/3/2013 10:18:44 AM



Perforation Data					
Zone	Brnch/St g	Entered Shot Total	Top (ftKB)	Btm (ftKB)	Date
SUSSEX, ORIGINAL HOLE		12	4,339.00	4,379.00	8/21/1993
		8	4,510.00	4,512.00	8/16/1993
NIOBRARA, ORIGINAL HOLE		40	6,678.00	6,688.00	3/20/2009
NIOBRARA, ORIGINAL HOLE		56	6,724.00	6,738.00	3/20/2009
CODELL, ORIGINAL HOLE		44	6,944.00	6,955.00	4/19/2006
CODELL, ORIGINAL HOLE		40	6,944.00	6,954.00	11/23/1992

Stimulations & Treatments			
Date	Zone	Primary Job Type	
11/23/1992	CODELL, ORIGINAL HOLE	DRILLING/COMPLETION - ORIGINAL	
Technical Result		Tech Result Details	Tech Result Note

Comment
WENT TO FLUSH ON 6 PPG, SAND MASTER PROBLEMS, 2400# IN CSG

Date	Zone	Primary Job Type	
8/25/1993	SUSSEX, ORIGINAL HOLE	RECOMPLETION	
Technical Result		Tech Result Details	Tech Result Note

Comment

Date	Zone	Primary Job Type	
5/5/2006	CODELL, ORIGINAL HOLE	RE-FRAC	
Technical Result		Tech Result Details	Tech Result Note

Comment

Date	Zone	Primary Job Type	
4/6/2009	NIOBRARA, ORIGINAL HOLE	RECOMPLETION	
Technical Result		Tech Result Details	Tech Result Note

Success
According to Plan

Comment
(NIOBRARA RECOMPLETE): ISIP - 3435 PSI. TREATMENT WENT WELL. NOLTE FLAT. POST ISIP - 3698 PSI.

Other In Hole

Run Date	Des	OD (in)	Top (ftKB)	Btm (ftKB)

Logs			
Date	Type	Top (ftKB)	Btm (ftKB)

11/15/1992	Compensated Density	4,200.0	7,079.0
11/15/1992	Induction	4,200.0	4,550.0
11/18/1992	Cement Bond	1,760.0	7,051.0
8/18/1993	Acoustic	3,941.0	4,373.0
3/13/2009	CBL/CCL/GR	1,800.0	6,000.0
6/19/2013	GYRO	13.0	6,900.0