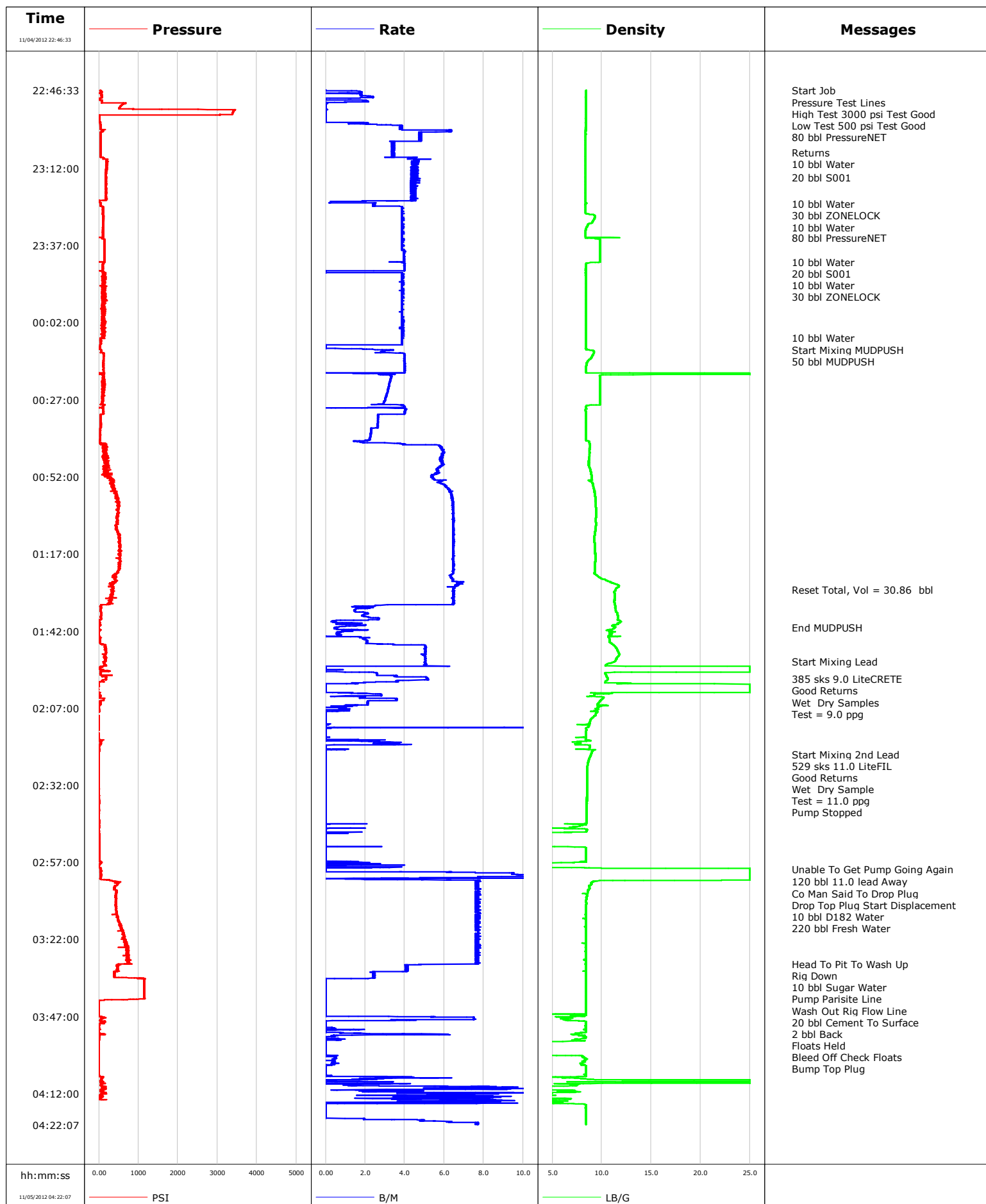


Well SG 8510D-23
Field Grand Vall
Engineer Jordan Moreland
Country United States

Client Encana
SIR No.
Job Type 9 5/8 Surface
Job Date 11-05-2012





Cementing Service Report

				Customer Encana			Job Number C9U4-00282								
Well SG 8510D-23 SG 8510D-23				Location (legal) L24			Schlumberger Location GCO			Job Start Nov/05/2012					
Field Grand Vall			Formation Name/Type Shale			Deviation		Bit Size 14.8 in		Well MD 3022.0 ft		Well TVD 3022.0 ft			
County Garfield			State/Province Colorado			BHP		BHST 120 degF		BHCT 96 degF		Pore Press. Gradient			
Well Master 0631333750			API/UWI 05045211620000												
Rig Name Patterson 330		Drilled For Gas		Service Via Land		Casing/Liner									
Offshore Zone		Well Class New		Well Type Development		Depth, ft		Size, in		Weight, lb/ft		Grade		Thread	
						120.0		20.000		94.0		J55		8RD	
Drilling Fluid Type WBM		Max. Density		Plastic Viscosity		3022.0		9.630		36.0		K55		8RD	
						Tubing/Drill Pipe									
Service Line Cementing		Job Type 9 5/8 Surface				Depth,		Size,		Weight,		Grade		Thread	
Max. Allowed Tub. Press 3000 psi		Max. Allowed Ann. Press		WH Connection Single Cement head		Perforations/Open Hole									
						Top,		Bottom,				No. of Shots		Total Interval	
Service Instructions Rate And Density Checked 80 bbl PressureNET 10 bbl Water 20 bbl S001 10 bbl Water 30 bbl ZONELOCK 10 bbl Water 80 bbl PressureNET 10 bbl Water 20 bbl S001 10 bbl Water														Diameter	
						Treat Down Casing		Displacement 230.0 bbl		Packer Type		Packer Depth			
						Tubing Vol.		Casing Vol. 231.0 bbl		Annular Vol. 384.0 bbl		Openhole Vol. 678.0 bbl			
Casing/Tubing Secured <input checked="" type="checkbox"/>		1 Hole Vol. Circulated prior to Cement <input checked="" type="checkbox"/>		Casing Tools				Squeeze Job							
Lift Pressure 1495 psi				Shoe Type Guide				Squeeze Type							
Pipe Rotated <input type="checkbox"/>		Pipe Reciprocated <input type="checkbox"/>		Shoe Depth 3022.0 ft				Tool Type							
No. Centralizers		Top Plugs 1		Bottom Plugs		Stage Tool Type				Tool Depth					
Cement Head Type Single				Stage Tool Depth				Tail Pipe Size							
Job Scheduled For Nov/05/2012		Arrived on Location Nov/05/2012		Leave Location Nov/05/2012		Collar Type Float				Tail Pipe Depth					
						Collar Depth 2976.0 ft				Sqz. Total Vol.					
Date	Time 24-hr clock	Treating Pressure PSI	Flow Rate B/M	Density LB/G	Volume BBL	Message									
11/04/2012	22:24:06					Started Acquisition									
11/04/2012	22:25:00					Rig Up As Per Standard									
11/04/2012	22:46:33	31	0.3	8.38	0.0										
11/04/2012	22:46:37					Start Job									
11/04/2012	22:46:37	39	0.0	8.38	0.0										
11/04/2012	22:46:40					Pressure Test Lines									
11/04/2012	22:46:40	35	0.0	8.38	0.0										
11/04/2012	22:46:43					High Test 3000 psi Test Good									
11/04/2012	22:46:43					Low Test 500 psi Test Good									
11/04/2012	22:46:43	28	0.0	8.38	0.0										
11/04/2012	22:49:06	14	1.3	8.38	4.0										
11/04/2012	22:54:06	3379	0.0	8.38	5.4										
11/04/2012	22:56:22					80 bbl PressureNET									
11/04/2012	22:56:22	5	0.0	8.38	5.4										
11/04/2012	22:59:06	42	3.9	8.38	6.4										
11/04/2012	23:04:06	41	3.4	8.38	29.5										
11/04/2012	23:06:47					Returns									
11/04/2012	23:06:47	43	3.4	8.38	38.7										
11/04/2012	23:09:00					10 bbl Water									
11/04/2012	23:09:00	209	4.5	8.38	46.8										
11/04/2012	23:09:06	212	4.6	8.38	0.4										

Well			Field		Job Start	Customer	Job Number
SG 8510D-23 SG 8510D-23			Grand Vall		Nov/05/2012	Encana	C9U4-00282
Date	Time 24-hr clock	Treating Pressure PSI	Flow Rate B/M	Density LB/G	Volume BBL	Message	
11/04/2012	23:15:00					20 bbl S001	
11/04/2012	23:15:00	178	4.4	8.38	27.0		
11/04/2012	23:19:06	186	4.5	8.38	45.3		
11/04/2012	23:23:29					10 bbl Water	
11/04/2012	23:23:29	42	2.5	8.35	61.9		
11/04/2012	23:24:06	41	2.5	8.37	63.4		
11/04/2012	23:26:20					30 bbl ZONELOCK	
11/04/2012	23:26:20	101	3.9	8.38	71.7		
11/04/2012	23:29:06	108	3.9	9.09	82.4		
11/04/2012	23:31:02					10 bbl Water	
11/04/2012	23:31:02	99	3.9	8.46	89.9		
11/04/2012	23:34:06	102	3.9	8.38	101.7		
11/04/2012	23:34:29					80 bbl PressureNET	
11/04/2012	23:34:29	107	3.9	8.56	103.2		
11/04/2012	23:39:06	136	4.0	9.83	121.1		
11/04/2012	23:42:20					10 bbl Water	
11/04/2012	23:42:20	137	3.6	9.83	133.9		
11/04/2012	23:42:31					20 bbl S001	
11/04/2012	23:42:31	130	3.9	8.88	134.6		
11/04/2012	23:44:06	98	4.0	8.38	140.9		
11/04/2012	23:45:00					10 bbl Water	
11/04/2012	23:45:00	97	4.0	8.38	144.5		
11/04/2012	23:45:18					30 bbl ZONELOCK	
11/04/2012	23:45:18	70	0.0	8.38	145.2		
11/04/2012	23:49:06	132	3.9	8.38	158.0		
11/04/2012	23:54:06	126	3.9	8.39	177.4		
11/04/2012	23:59:06	100	3.9	8.39	196.6		
11/05/2012	00:04:06	126	3.9	8.39	215.9		
11/05/2012	00:06:53					10 bbl Water	
11/05/2012	00:06:53	89	3.9	8.39	226.7		
11/05/2012	00:09:06	29	3.9	8.39	235.2		
11/05/2012	00:10:45					Start Mixing MUDPUSH	
11/05/2012	00:10:45	53	3.1	8.51	236.6		
11/05/2012	00:11:22					50 bbl MUDPUSH	
11/05/2012	00:11:22	56	2.8	9.20	238.5		
11/05/2012	00:14:06	116	4.0	8.69	248.9		
11/05/2012	00:19:06	107	3.3	9.78	268.0		
11/05/2012	00:24:06	136	3.1	9.84	284.2		
11/05/2012	00:29:06	103	3.9	8.42	299.7		
11/05/2012	00:34:06	45	2.6	8.39	315.9		
11/05/2012	00:39:06	35	2.2	8.39	328.0		
11/05/2012	00:44:06	138	6.0	8.76	348.8		
11/05/2012	00:49:06	135	5.7	8.79	378.2		
11/05/2012	00:54:06	304	5.9	9.07	406.2		
11/05/2012	00:59:06	494	6.4	9.34	437.4		
11/05/2012	01:04:06	457	6.4	9.42	469.6		
11/05/2012	01:09:06	426	6.5	9.34	501.9		
11/05/2012	01:14:06	542	6.5	9.28	534.2		
11/05/2012	01:19:06	525	6.5	9.32	566.5		
11/05/2012	01:24:06	396	6.3	9.56	598.7		
11/05/2012	01:28:37					Reset Total, Vol = 30.86 bbl	
11/05/2012	01:28:37	352	6.5	11.38	628.2		
11/05/2012	01:29:06	373	6.5	11.32	631.3		
11/05/2012	01:34:06	35	1.4	11.40	661.0		

Well			Field		Job Start		Customer		Job Number	
SG 8510D-23 SG 8510D-23			Grand Vall		Nov/05/2012		Encana		C9U4-00282	
Date	Time 24-hr clock	Treating Pressure PSI	Flow Rate B/M	Density LB/G	Volume BBL	Message				
11/05/2012	01:40:51					End MUDPUSH				
11/05/2012	01:40:51	-3	0.6	11.31	672.0					
11/05/2012	01:44:06	21	1.8	10.71	674.9					
11/05/2012	01:49:06	165	5.0	11.70	693.4					
11/05/2012	01:51:54					Start Mixing Lead				
11/05/2012	01:51:54	161	5.0	11.31	707.4					
11/05/2012	01:54:06	10	0.0	25.00	715.2					
11/05/2012	01:57:35					385 sks 9.0 LiteCRETE				
11/05/2012	01:57:35	181	5.1	10.59	723.4					
11/05/2012	01:57:38					Good Returns				
11/05/2012	01:57:38	190	5.2	10.59	723.7					
11/05/2012	01:57:39					Wet Dry Samples				
11/05/2012	01:57:39	170	5.2	10.59	723.8					
11/05/2012	01:57:40					Test = 9.0 ppg				
11/05/2012	01:57:40	185	5.1	10.59	723.9					
11/05/2012	01:59:06	-14	1.5	11.54	728.4					
11/05/2012	02:04:06	114	3.6	10.04	733.3					
11/05/2012	02:09:06	-31	0.0	9.40	739.8					
11/05/2012	02:14:06	-1	0.0	8.43	741.6					
11/05/2012	02:19:06	7	0.0	8.80	745.8					
11/05/2012	02:21:52					Start Mixing 2nd Lead				
11/05/2012	02:21:52	-1	0.0	8.92	746.0					
11/05/2012	02:21:53					529 sks 11.0 LiteFIL				
11/05/2012	02:21:53	-1	0.0	8.91	746.0					
11/05/2012	02:24:06	-1	0.0	8.65	746.0					
11/05/2012	02:26:44					Good Returns				
11/05/2012	02:26:44	-1	0.0	8.51	746.0					
11/05/2012	02:26:46					Wet Dry Sample				
11/05/2012	02:26:46	-1	0.0	8.51	746.0					
11/05/2012	02:26:47					Test = 11.0 ppg				
11/05/2012	02:26:47	-1	0.0	8.51	746.0					
11/05/2012	02:28:16					Pump Stopped				
11/05/2012	02:28:16	-1	0.0	8.49	746.0					
11/05/2012	02:29:06	-1	0.0	8.49	746.0					
11/05/2012	02:34:06	-0	0.0	8.48	746.0					
11/05/2012	02:39:06	-1	0.0	8.48	746.0					
11/05/2012	02:44:06	0	0.0	8.47	746.0					
11/05/2012	02:49:06	1	0.0	2.53	746.4					
11/05/2012	02:54:06	1	0.0	8.41	746.5					
11/05/2012	02:59:06	43	0.0	25.00	748.2					
11/05/2012	02:59:09					Unable To Get Pump Going Again				
11/05/2012	02:59:09	47	0.0	25.00	748.2					
11/05/2012	03:03:14					120 bbl 11.0 lead Away				
11/05/2012	03:03:14	408	7.7	9.19	772.7					
11/05/2012	03:03:15					Co Man Said To Drop Plug				
11/05/2012	03:03:15	408	7.7	9.22	772.8					
11/05/2012	03:03:16					Drop Top Plug Start Displacement				
11/05/2012	03:03:16	423	7.7	9.23	773.0					
11/05/2012	03:03:17					10 bbl D182 Water				
11/05/2012	03:03:17	427	7.8	9.23	773.1					
11/05/2012	03:03:18					220 bbl Fresh Water				
11/05/2012	03:03:18	427	7.8	9.23	773.2					
11/05/2012	03:04:06	470	7.7	8.96	779.4					
11/05/2012	03:09:06	436	7.6	8.43	817.8					

Well			Field		Job Start	Customer		Job Number
SG 8510D-23 SG 8510D-23			Grand Vall		Nov/05/2012	Encana		C9U4-00282
Date	Time 24-hr clock	Treating Pressure PSI	Flow Rate B/M	Density LB/G	Volume BBL	Message		
11/05/2012	03:19:06	601	7.7	8.40	894.8			
11/05/2012	03:24:06	710	7.6	8.40	933.2			
11/05/2012	03:30:00					Head To Pit To Wash Up		
11/05/2012	03:30:00					Rig Down		
11/05/2012	03:30:00					10 bbl Sugar Water		
11/05/2012	03:30:00					Pump Parisite Line		
11/05/2012	03:30:00					Wash Out Rig Flow Line		
11/05/2012	03:30:00					20 bbl Cement To Surface		
11/05/2012	03:30:00					2 bbl Back		
11/05/2012	03:30:00					Floats Held		
11/05/2012	03:30:00					Bleed Off Check Floats		
11/05/2012	03:30:00					Bump Top Plug		
11/05/2012	03:30:00	639	7.7	8.37	978.6			
11/05/2012	03:34:06	385	2.4	8.40	993.3			
11/05/2012	03:39:06	1149	0.0	8.40	994.7			
11/05/2012	03:44:06	-4	0.0	8.40	994.7			
11/05/2012	03:49:06	58	0.0	8.42	1003.3			
11/05/2012	03:54:06	-2	0.0	8.36	1006.6			
11/05/2012	03:59:06	-4	0.0	0.01	1007.0			
11/05/2012	04:04:06	-4	0.0	8.43	1008.4			
11/05/2012	04:09:06	44	1.7	7.19	1012.9			
11/05/2012	04:14:06	-3812	7.5	4.52	1040.4			

Post Job Summary

Average Pump Rates,					Volume of Fluid Injected,			
Slurry	N2	Mud	Maximum Rate		Total Slurry	Mud	Spacer	N2
Treating Pressure Summary,					Breakdown Fluid			
Maximum	Final	Average	Bump Plug to 1200	Breakdown	Type	Volume		Density 8.34 lb/gal
Avg. N2 Percent		Designed Slurry Volume		Displacement	Mix Water Temp 55 degF	Cement Circulated to Surface? <input checked="" type="checkbox"/>		Volume
						Washed Thru Perfs <input type="checkbox"/>		To
Customer or Authorized Representative James Retherford			Schlumberger Supervisor Jordan Moreland			Circulation Lost <input type="checkbox"/>		Job Completed <input checked="" type="checkbox"/>
						-		-