



CEMENT BOND
AUG 09 2012 GAMMA RAY VDL
COLLAR CORRELATION LOG

Company	BEREN CORP.	Company	BEREN CORP.
Well	MOYER 13-29	Well	MOYER 13-29
Field	BORDER	Field	BORDER
County	WELD	County	WELD
State	COLORADO	State	COLORADO
Location:	APL # : 05-123-07029-0000	Other Services	SET
	654' FWL & 779' FSL		5 1/2" CIBP
	SWSW		
Permanent Datum	GL	Elevation	5053
Log Measured From	KB		
Drilling Measured From	KB		
	SEC 29 TWP 12N RGE 56W		
Date	AUGUST 04 2012		
Run Number	ONE		
Depth Driller	6600		
Depth Logger	6505		
Bottom Logged Interval	6500		
Top Log Interval	5220		
Open Hole Size	7 7/8"		
Type Fluid	WATER		
Density / Viscosity	---		
Max. Recorded Temp.	---		
Estimated Cement Top	5738		
Time Well Ready	---		
Time Logger on Bottom	---		
Equipment Number	2400		
Location	STERLING CO		
Recorded By	PHIL LOPEZ		
Witnessed By	ED HAYES		
Run Number	Bit	From	To
	Size	Weight	To
Casing Record	Size	Wgt/Ft	Top
Surface String	8 5/8"	24#	SURFACE
Prot String			
Production String	5.50"	14# & 15#	SURFACE
Liner			Bottom

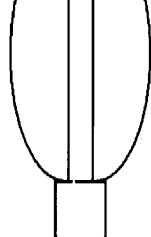
<<< Fold Here >>>

All interpretations are opinions based on inferences from electrical or other measurements and we cannot and do not guarantee the accuracy or correctness of any interpretation and we shall not, except in the case of gross or willful negligence on our part, be liable or responsible for any loss, costs, damages, or expenses incurred or sustained by anyone resulting from any interpretation made by any of our officers, agents or employees. These interpretations are also subject to our general terms and conditions set out in our current Price Schedule.

Comments

THANK YOU FOR CHOOSING J-W WIRELINE
DEPTH REFERENCE TO OPEN HOLE LOG DATED 2-29-68

Sensor	Offset (ft)	Schematic	Description	Len (ft)	OD (in)	Wt (lb)
			CENT-A (1)	3.00	1.69	10.00
CCL	14.06		CCL-275tekco (2.75TEKCO) 2 3/4 TEK CCL Earth Mag	1.96	2.75	20.00
GR	11.49		GR-s_t001 (t001)	2.52	1.69	30.00
WVF5	7.34					
WVF3	6.34		CBL-3_5 (001)	7.23	2.44	127.00



CENT-B (2)

3.00

1.69

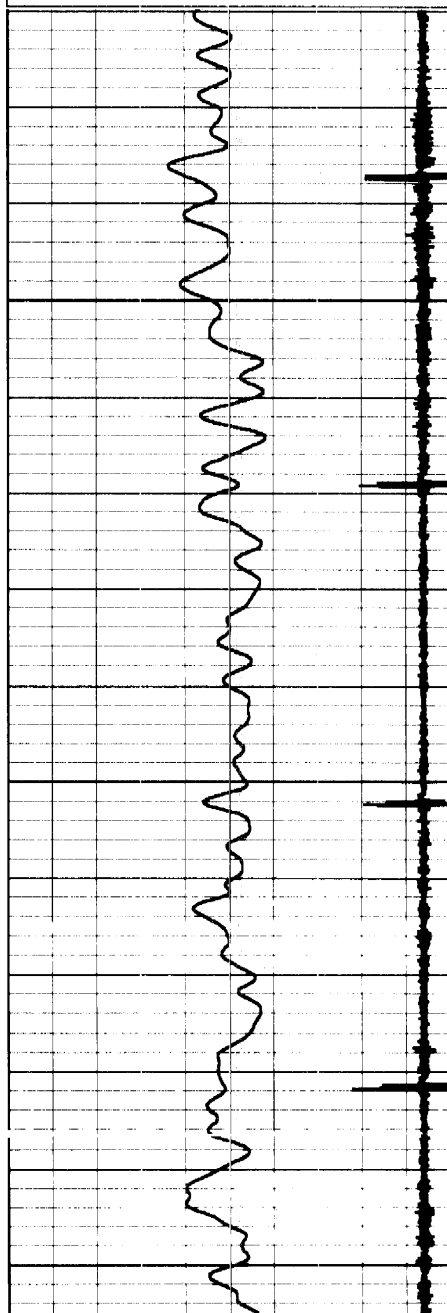
10.00

Dataset: moyer 13-29.db: field/well/run1/pass5
Total Length: 17.71 ft
Total Weight: 197.00 lb
O.D.: 2.75 in

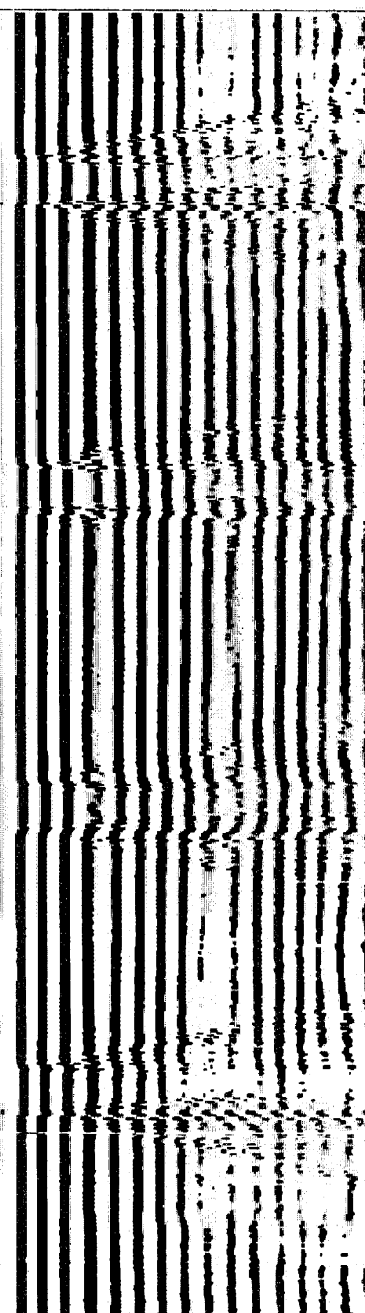
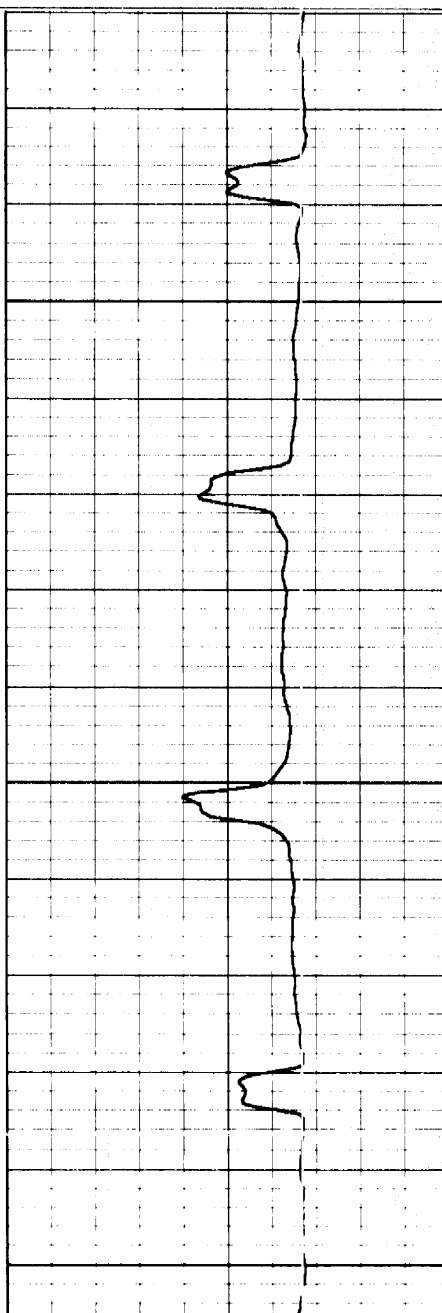
Database File: moyer 13-29.db
Dataset Pathname: pass5
Presentation Format: cbx
Dataset Creation: Sat Aug 04 11:09:06 2012 by Log SCH 111116
Charted by: Depth in Feet scaled 1:240

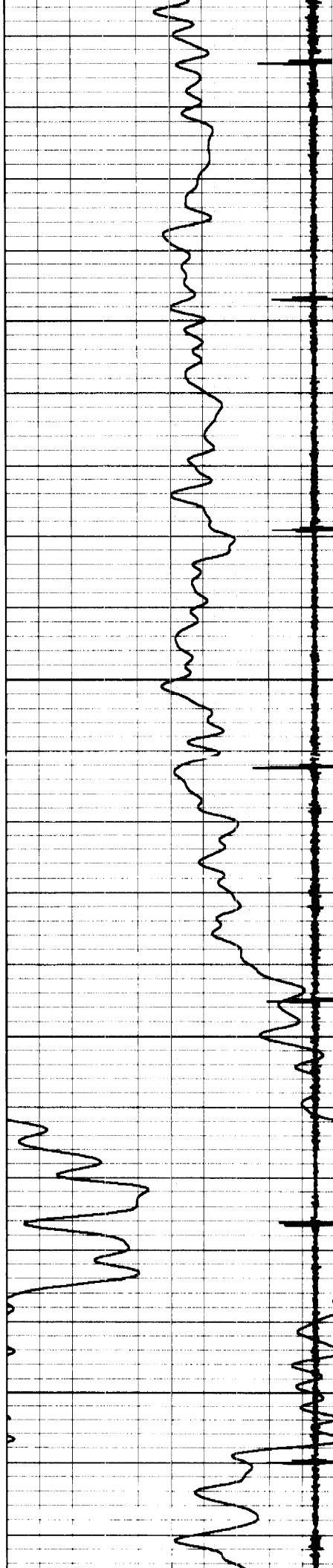
0 Gamma Ray (GAPI) 200
4 CCL -0.25

0 3' Amplitude (mV) 100 200 Variable Density 1200
0 Amplified Amplitude (mV) 30



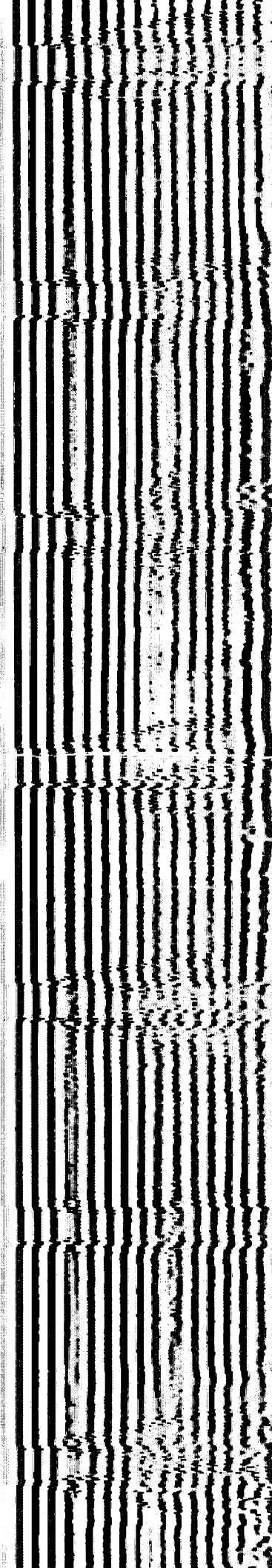
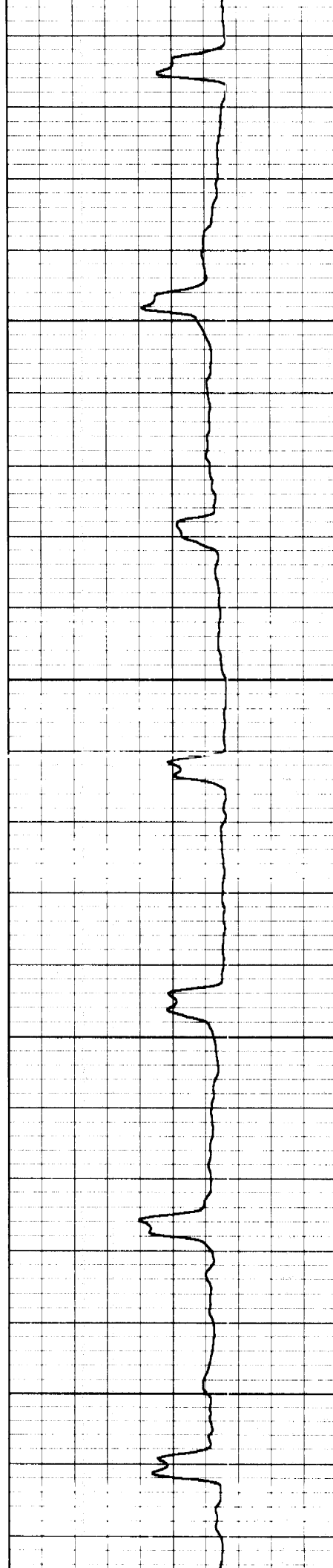
5300

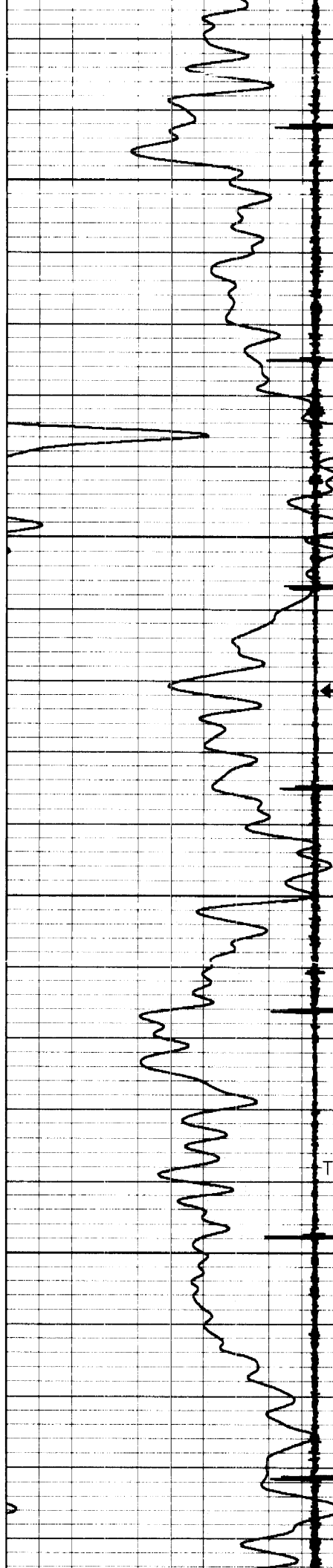




5400

5500



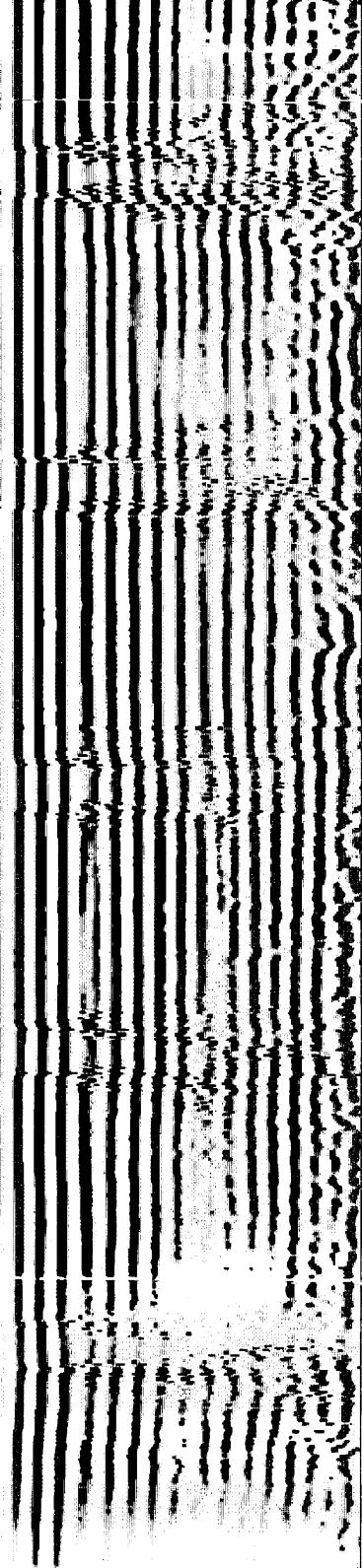
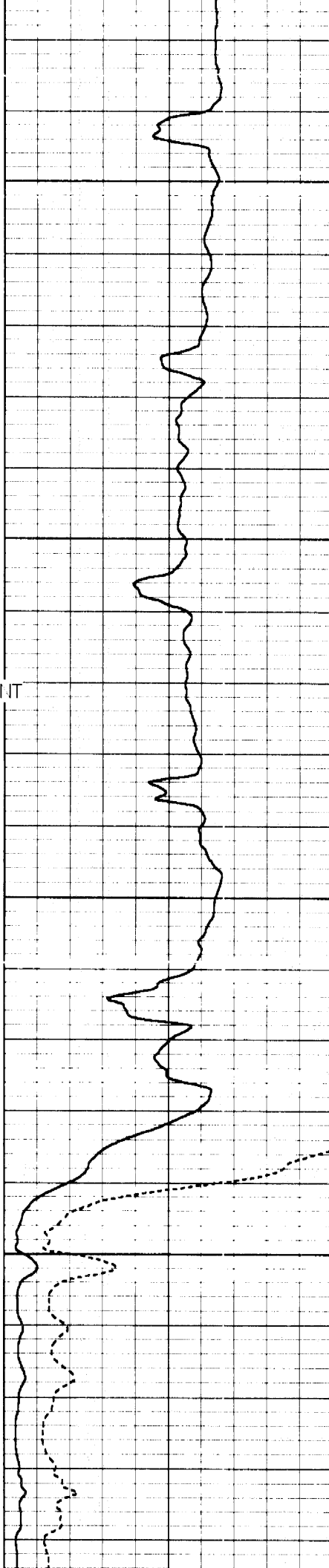


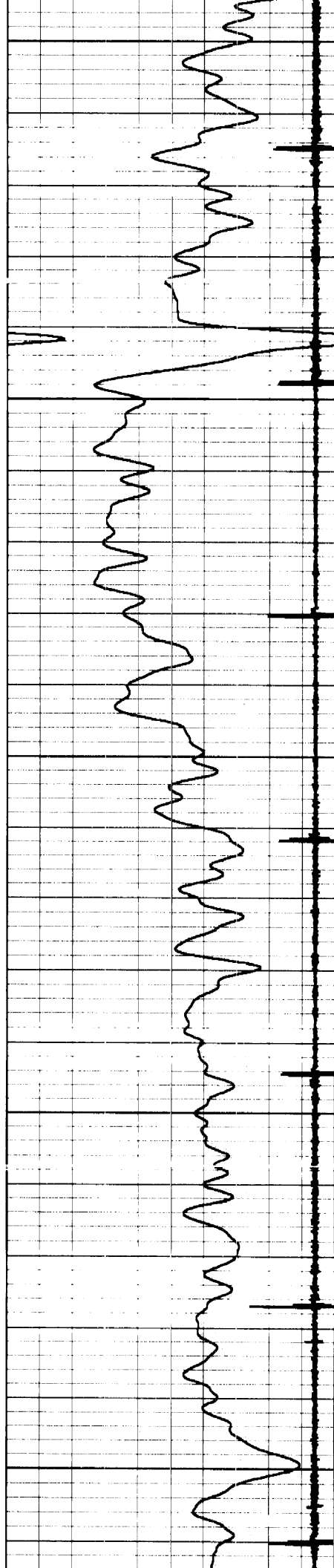
5600

FLAG JOINT

5700

Top of Cement

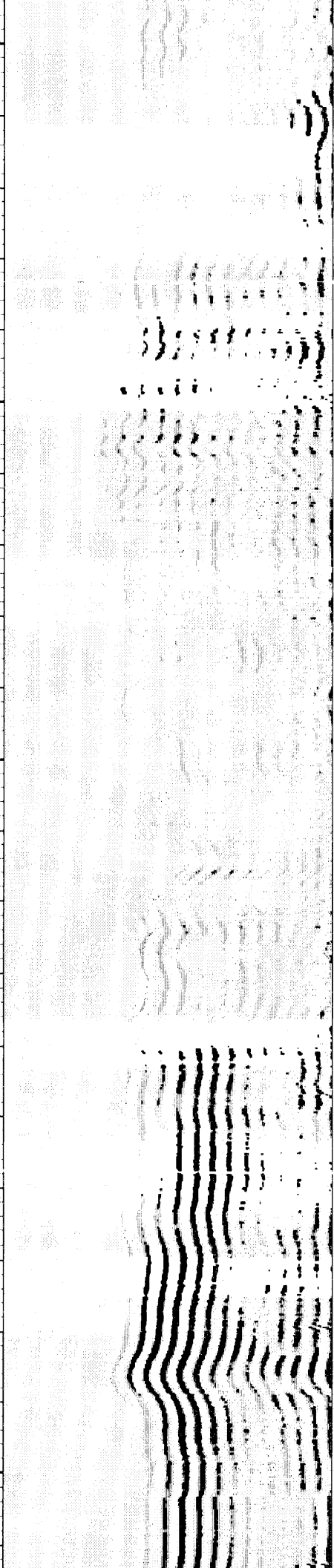
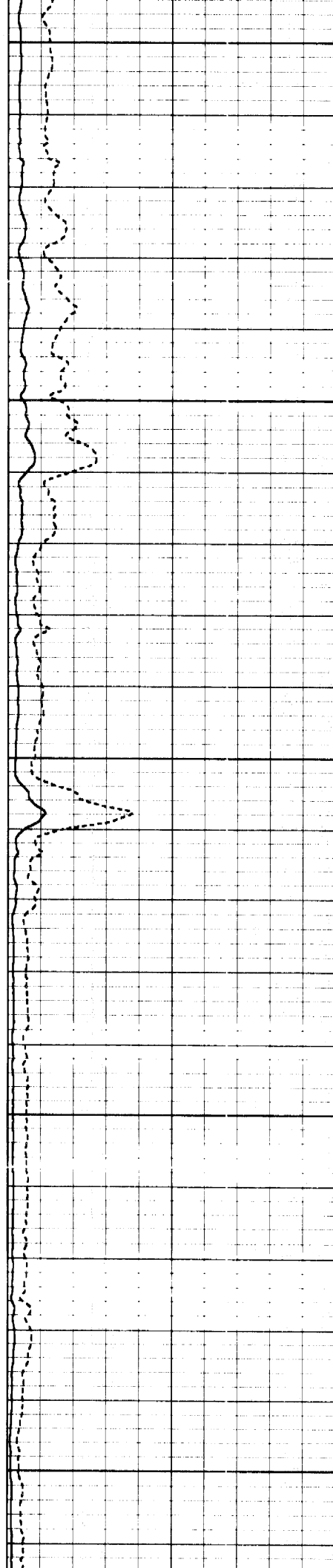


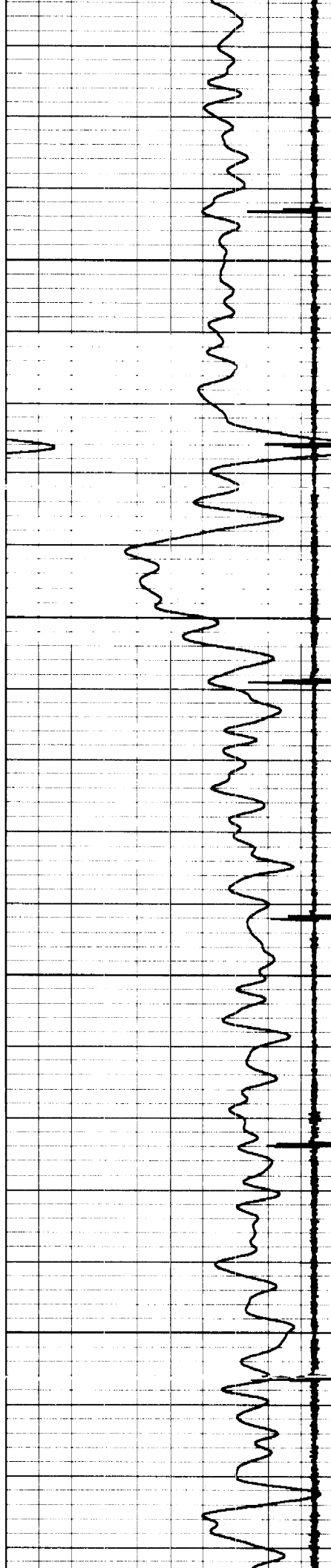


5800

5900

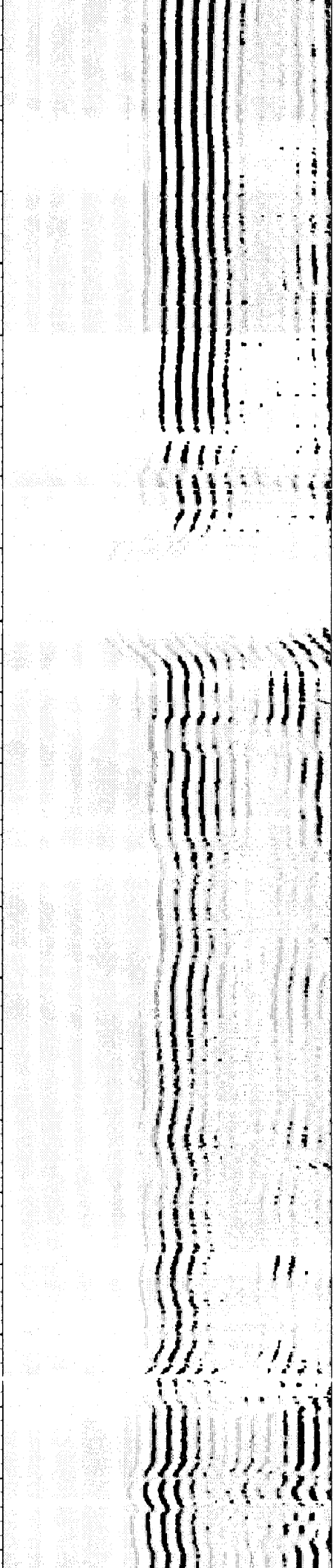
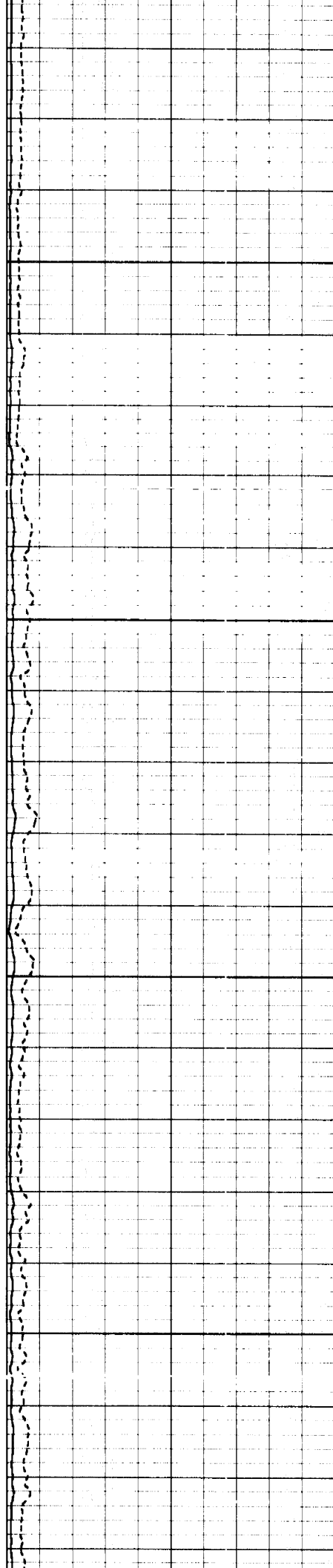
6000

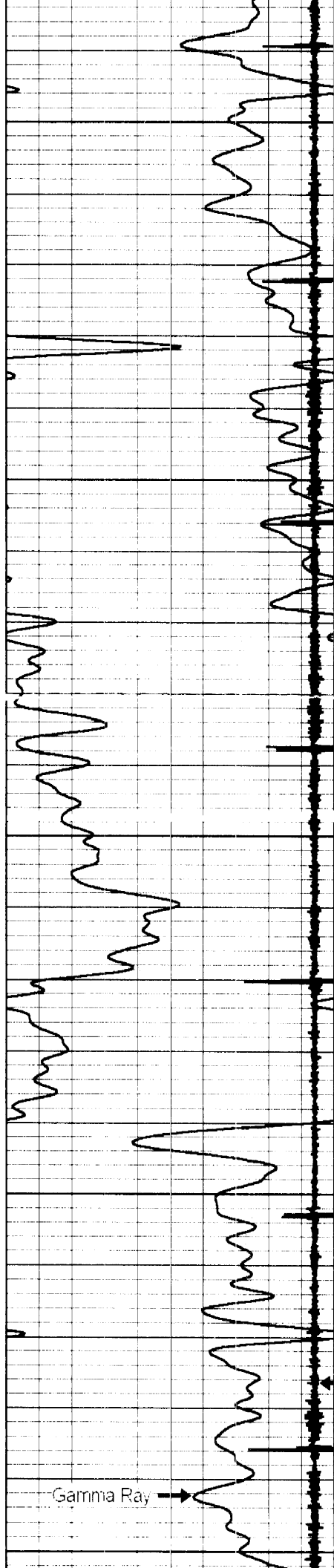




6100

6200





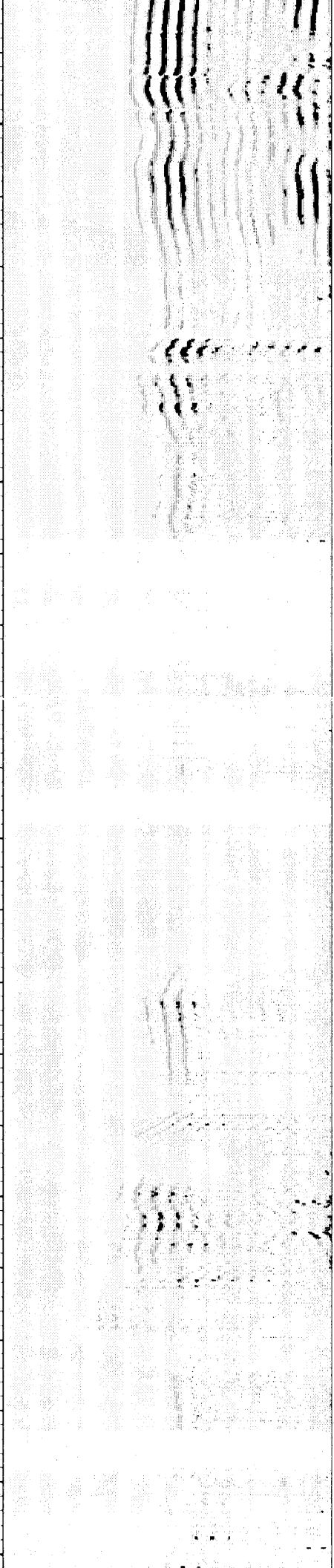
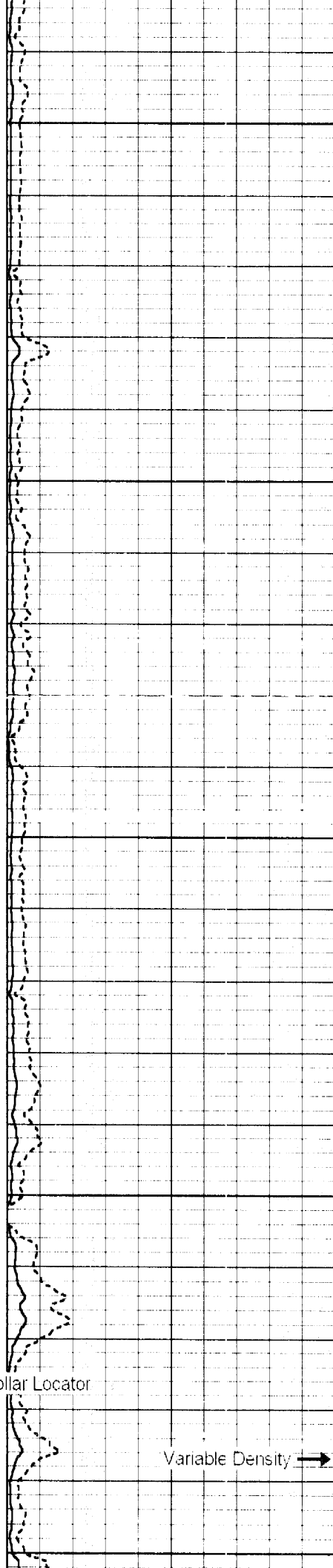
6300

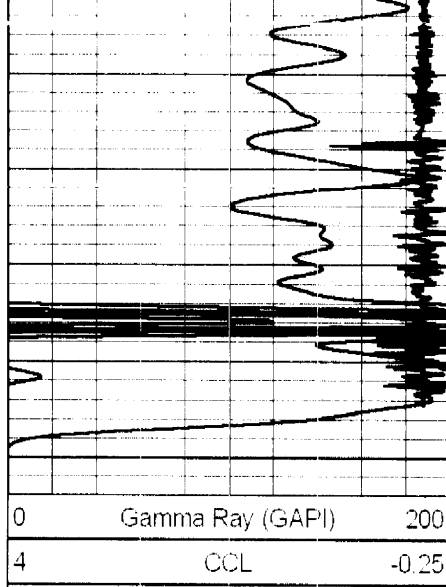
6400

Casing Collar Locator

Gamma Ray

Variable Density





6500

