

# Schlumberger

Company: **Conoco Phillips Company**

Well: **Teb03-1P**

Field: **Wildcat**

County: **Arapahoe**

State: **Colorado**

**Platform Express  
Cement Volume**

County: Arapahoe  
Field: Wildcat  
Location: NENE Sec. 3, T5S, R64W  
Well: Tebo3-1P  
Company: Conoco Phillips Company

LOCATION		NENE Sec. 3, T5S, R64W SHL: 599' FNL X 400' FEL Lat/Long: 39.650019 N / 104.529994 W	Elev.: K.B. 5899.00 ft G.L. 5875.00 ft D.F. 5898.00 ft
Permanent Datum:	Ground Level	Elev.: 5875.00 ft	
Log Measured From:	Kelly Bushing	24.00 ft above Perm. Datum	
Drilling Measured From:	Kelly Bushing		
API Serial No.	Section	Township	Range
05-005-07197-000C	3	5S	64W

Logging Date	Run 1	Run 2	Run
Run Number			
Depth Driller			
Schlumberger Depth			
Bottom Log Interval			
Top Log Interval			
Casing Driller Size @ Depth			
Casing Schlumberger			
Bit Size			
Type Fluid In Hole			
Density			
Fluid Loss			
Source Of Sample			
RM @ Measured Temperature			
RMF @ Measured Temperature			
RMC @ Measured Temperature			
Source RMF			
RM @ MRT			
Maximum Recorded Temperatures			
Circulation Stopped			
Logger On Bottom			
Unit Number			
Recorded By			
Witnessed By			

Logging Date	20-Nov-2012		
Run Number	1		
Depth Driller	7983 ft		
Schlumberger Depth	7992 ft		
Bottom Log Interval	7984 ft		
Top Log Interval	2207 ft		
Casing Driller Size @ Depth	9.625 in @ 2205 ft		
Casing Schlumberger	2207 ft		
Bit Size	8.750 in		
Type Fluid In Hole	Oil Based Mud		
Density	9.2 lbm/gal	50 s	
Fluid Loss			
Source Of Sample			
RM @ Measured Temperature	@	@	
RMF @ Measured Temperature	@	@	
RMC @ Measured Temperature	@	@	
Source RMF			
RM @ MRT	@ 213	@ 213	@
Maximum Recorded Temperatures	213 degF		
Circulation Stopped	20-Nov-2012	6:00	
Logger On Bottom	20-Nov-2012	17:15	
Unit Number	3022	Ft. Morgan, CO	
Recorded By	Tim Hoffman		
Witnessed By	Frank Holubec		

Logging Date	Run 1	Run 2	Run
Run Number			
Depth Driller			
Schlumberger Depth			
Bottom Log Interval			
Top Log Interval			
Casing Driller Size @ Depth			
Casing Schlumberger			
Bit Size			
Type Fluid In Hole			
Density			
Fluid Loss			
Source Of Sample			
RM @ Measured Temperature			
RMF @ Measured Temperature			
RMC @ Measured Temperature			
Source RMF			
RM @ MRT			
Maximum Recorded Temperatures			
Circulation Stopped			
Logger On Bottom			
Unit Number			
Recorded By			
Witnessed By			

## DEPTH SUMMARY LISTING

Date Created: 20-NOV-2012 18:01:07

### Depth System Equipment

Depth Measuring Device	Tension Device	Logging Cable
Type: IDW-B Serial Number: 6868 Calibration Date: 24-Oct-2012 Calibrator Serial Number: Calibration Cable Type: 7-39P-LXS Wheel Correction 1: -6 Wheel Correction 2: -5	Type: CMTD-B/A Serial Number: 1104 Calibration Date: 01-Nov-2012 Calibrator Serial Number: 78135 Number of Calibration Points: 10 Calibration RMS: 8 Calibration Peak Error: 13	Type: 7-39P-LXS Serial Number: Length: 13900 FT Conveyance Method: Wireline Rig Type: LAND

### Depth Control Parameters

Log Sequence: First Log In the Well Rig Up Length At Surface: 0.00 FT Rig Up Length At Bottom: 0.00 FT Rig Up Length Correction: 0.00 FT Stretch Correction: 6.00 FT Tool Zero Check At Surface:
---

### Depth Control Remarks

<ol style="list-style-type: none"> <li>1. All Schlumberger depth policies followed.</li> <li>2. IDW used as primary depth reference. Z-Chart used as secondary.</li> <li>3.</li> <li>4.</li> <li>5.</li> <li>6.</li> </ol>
--

#### DISCLAIMER

THE USE OF AND RELIANCE UPON THIS RECORDED-DATA BY THE HEREIN NAMED COMPANY (AND ANY OF ITS AFFILIATES, PARTNERS, REPRESENTATIVES, AGENTS, CONSULTANTS AND EMPLOYEES) IS SUBJECT TO THE TERMS AND CONDITIONS AGREED UPON BETWEEN SCHLUMBERGER AND THE COMPANY, INCLUDING: (a) RESTRICTIONS ON USE OF THE RECORDED-DATA; (b) DISCLAIMERS AND WAIVERS OF WARRANTIES AND REPRESENTATIONS REGARDING COMPANY'S USE OF AND RELIANCE UPON THE RECORDED-DATA; AND (c) CUSTOMER'S FULL AND SOLE RESPONSIBILITY FOR ANY INFERENCE DRAWN OR DECISION MADE IN CONNECTION WITH THE USE OF THIS RECORDED-DATA.

OTHER SERVICES1	OTHER SERVICES2
OS1: MSIP	OS1:
OS2: HNGS	OS2:
OS3:	OS3:
OS4:	OS4:
OS5:	OS5:
REMARKS: RUN NUMBER 1	REMARKS: RUN NUMBER 2
This is the first run in hole	
Toolstring run as per tool sketch	
Matrix: Limestone (2.71 g/cc)	

Rig: H&P 280

Crew: Derrick Hunter, Troy Ocanas, Mark Butler

RUN 1		
SERVICE ORDER #:	CCN1-00002	
PROGRAM VERSION:	19C1-222	
FLUID LEVEL:	300 ft	
LOGGED INTERVAL	START	STOP

RUN 2		
SERVICE ORDER #:		
PROGRAM VERSION:		
FLUID LEVEL:		
LOGGED INTERVAL	START	STOP

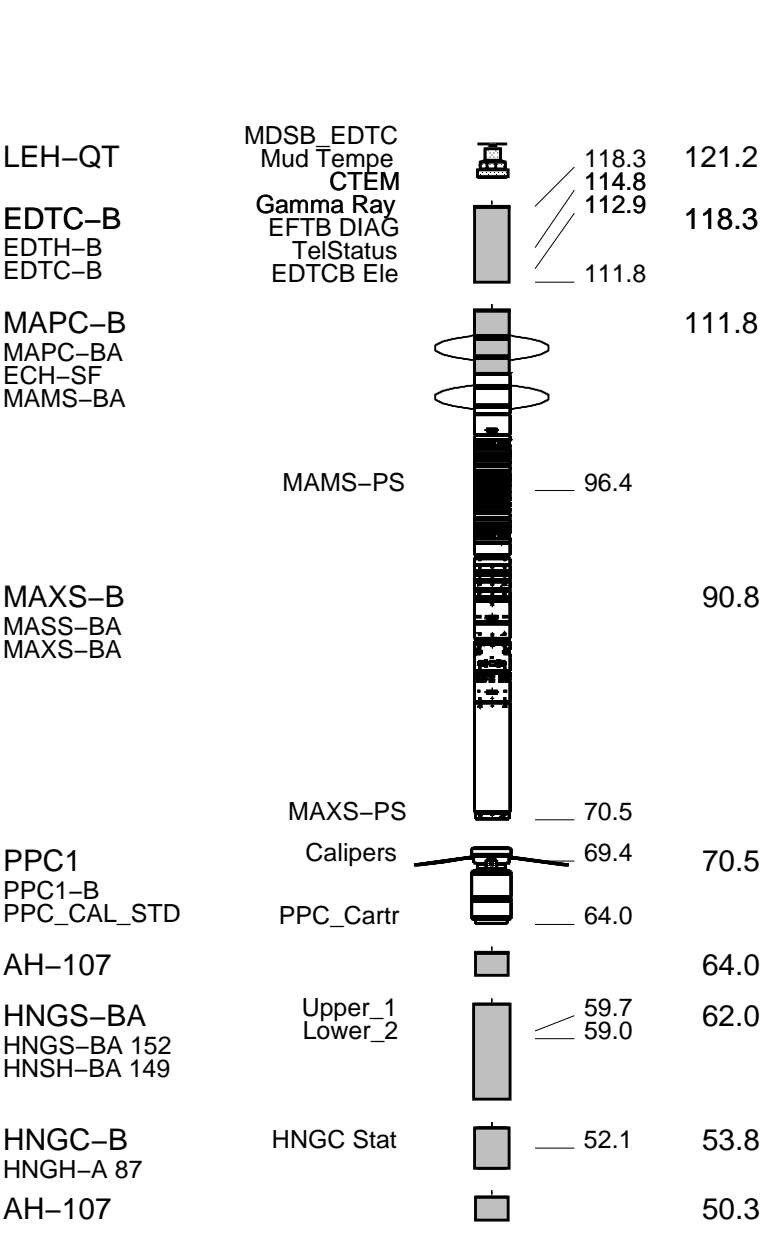
## EQUIPMENT DESCRIPTION

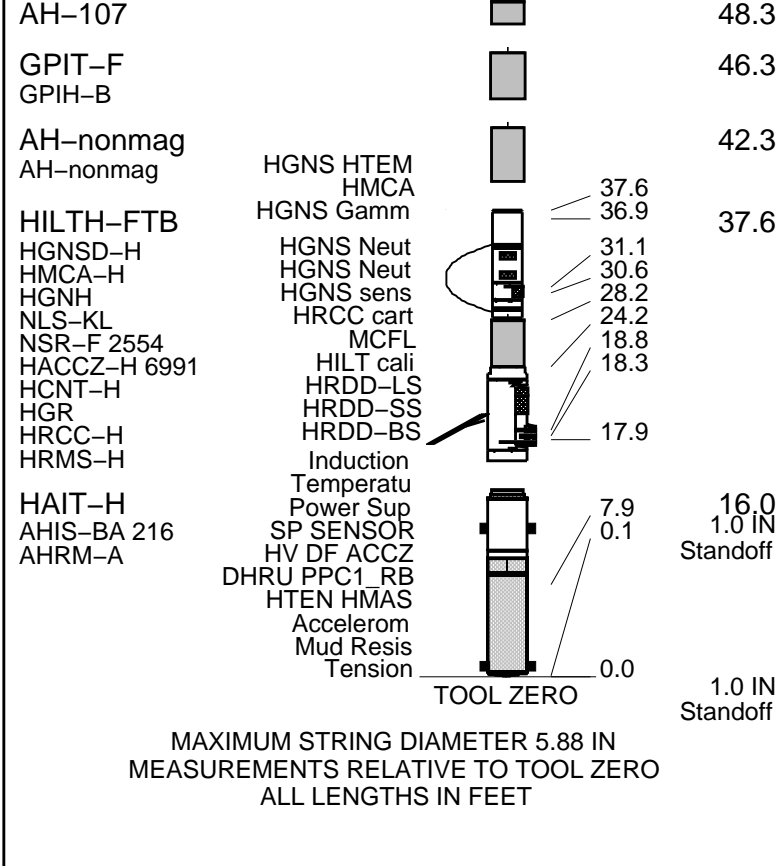
RUN 1

RUN 2

**SURFACE EQUIPMENT**  
 GSR-U/Y  
 NCT-B  
 CNB-AB  
 NCS-VB  
 GSR-U 410  
 WITM (EDTS)-A

**DOWNHOLE EQUIPMENT**





MAXIMUM STRING DIAMETER 5.88 IN  
 MEASUREMENTS RELATIVE TO TOOL ZERO  
 ALL LENGTHS IN FEET

### Input DLIS Files

DEFAULT AIT\_TLD\_MCFL\_CNL\_IS\_018LUP FN:17 PRODUCER 20-Nov-2012 13:42 8002.5 FT 2098.5 FT

### Output DLIS Files

DEFAULT AIT\_TLD\_MCFL\_CNL\_IS\_005PUP FN:4 PRODUCER 21-Nov-2012 14:35 8002.5 FT 2098.5 FT

### OP System Version: 19C2-270

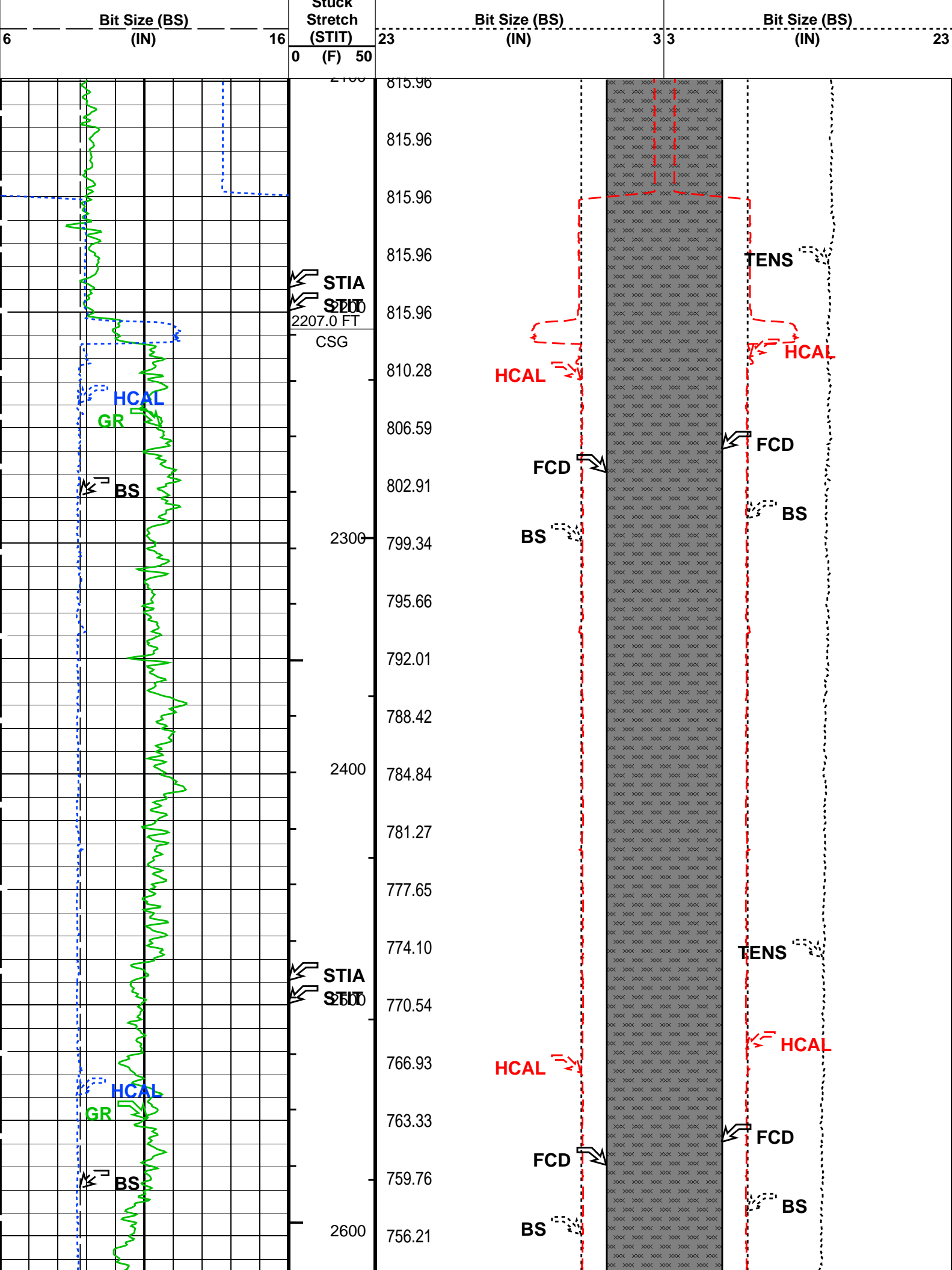
HAIT-H	19C2-270	HILTH-FTB	19C2-270
GPIT-F	19C2-270	HNGC-B	19C2-270
HNGS-BA	19C2-270	PPC1	19C2-270
MAXS-B	19C2-270	MAPC-B	19C2-270
EDTC-B	19C2-270		

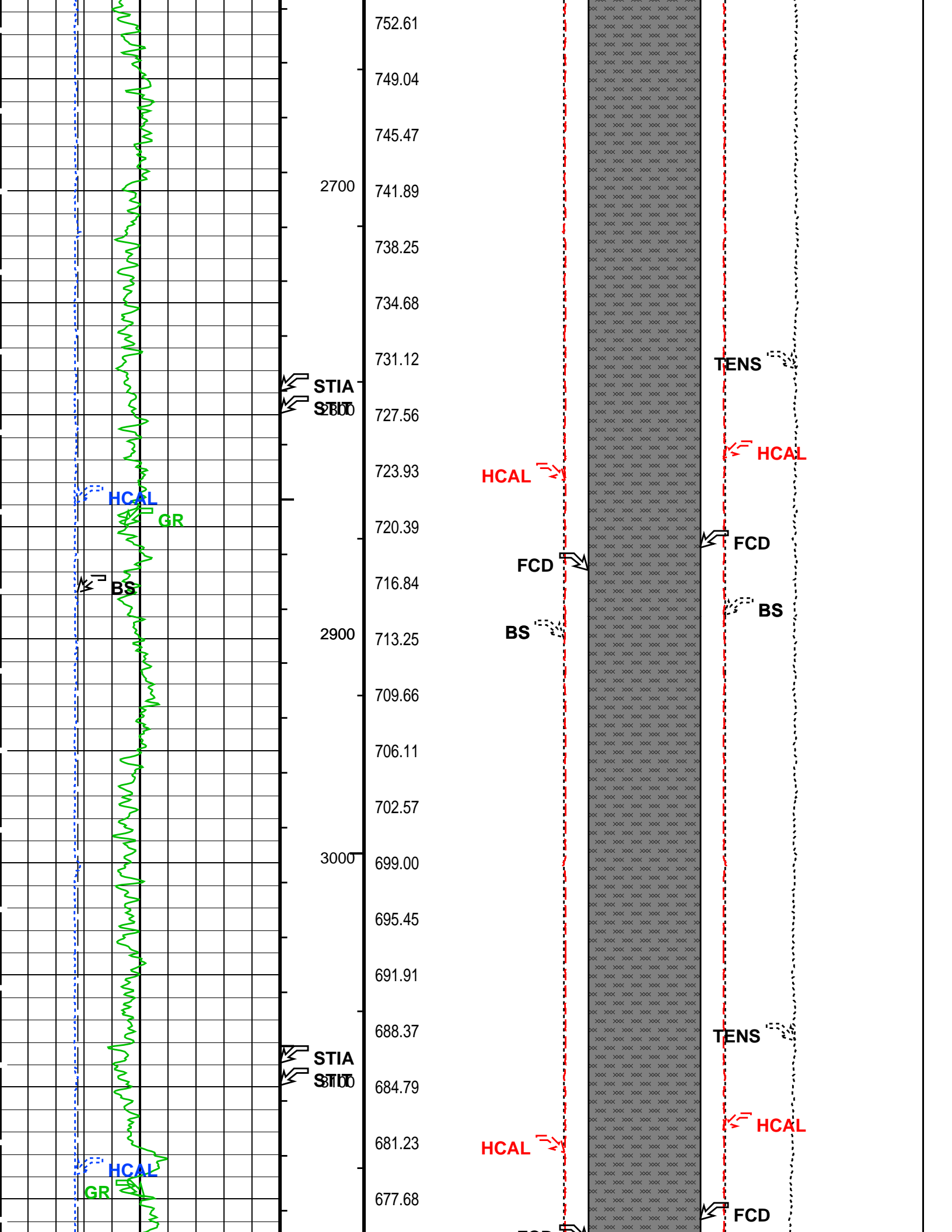
### PIP SUMMARY

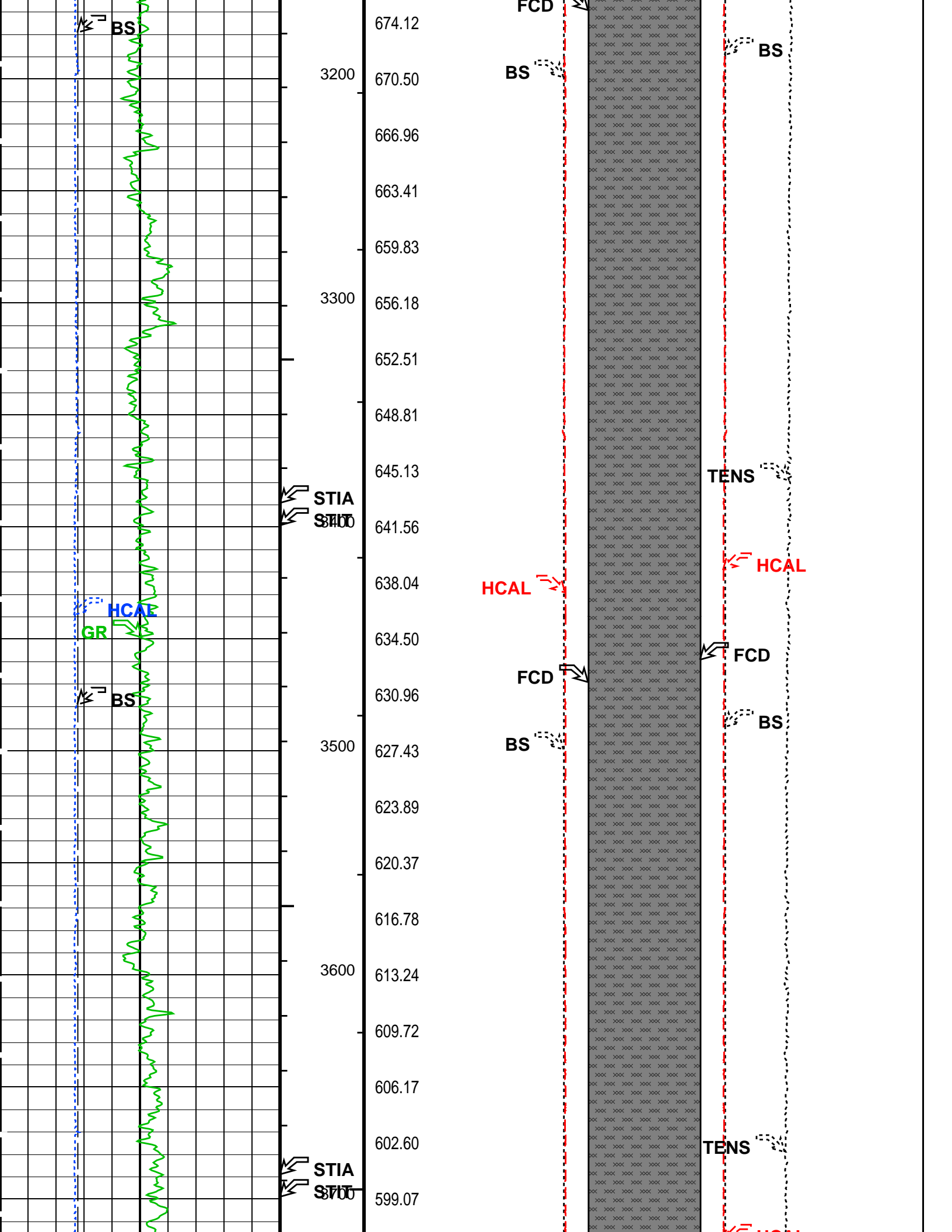
- ┌ Integrated Hole Volume Minor Pip Every 10 F3
- ┌ Integrated Hole Volume Major Pip Every 100 F3
- └ Integrated Cement Volume Minor Pip Every 10 F3
- └ Integrated Cement Volume Major Pip Every 100 F3

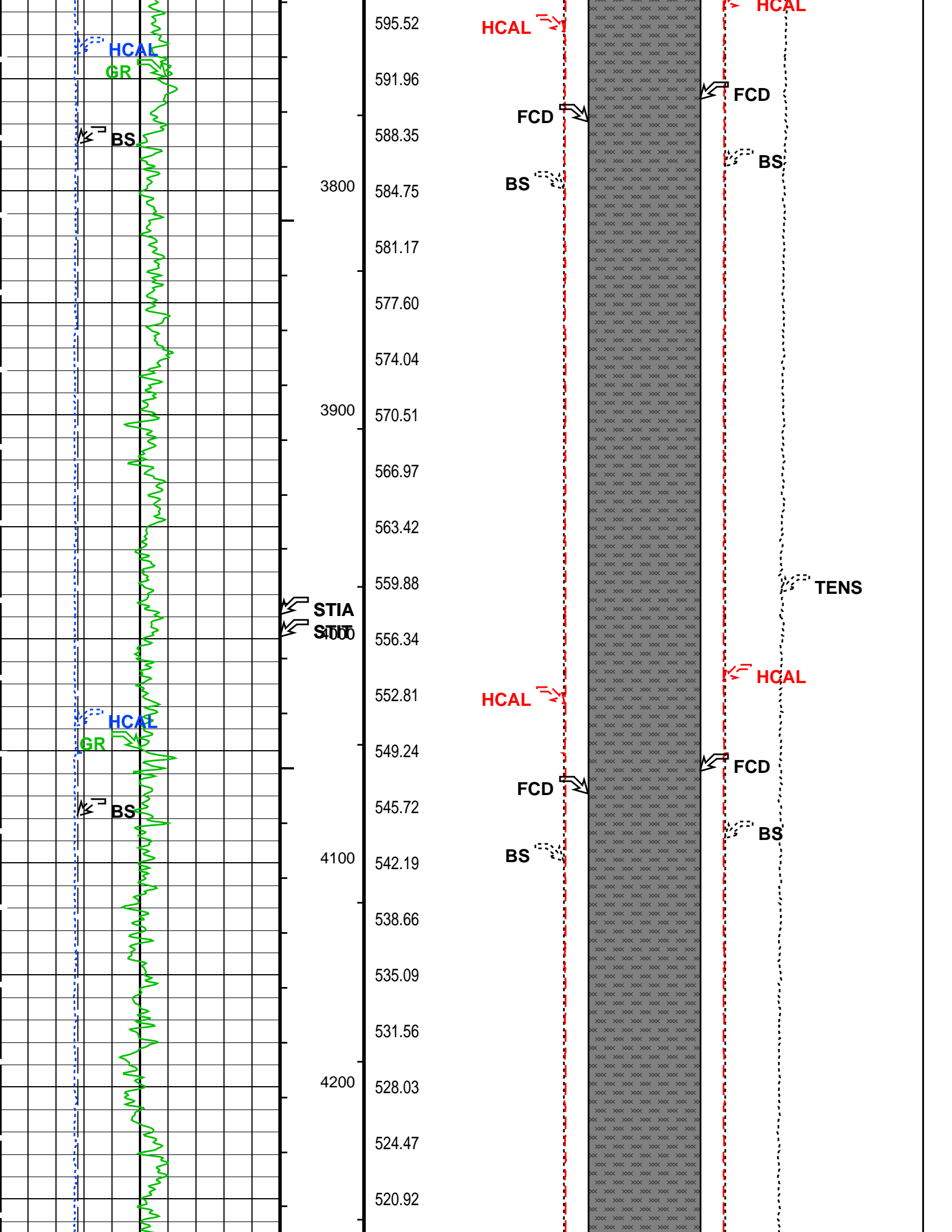
Time Mark Every 60 S

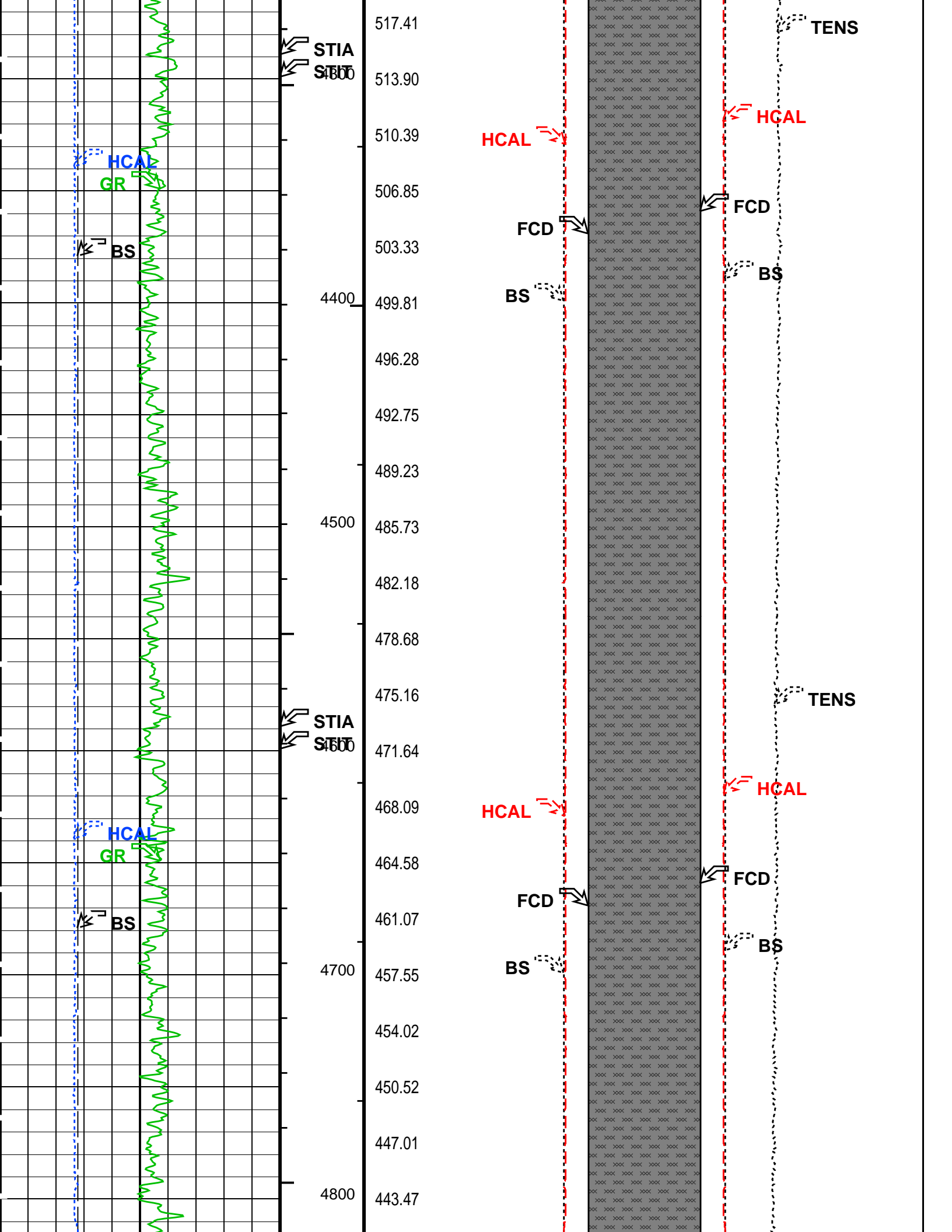
		FCD2 - FCD3 From FCD2 to FCD3			
		Cement Volume (ICV) (F3)	Tension (TENS) (LBF)		
			6000	0	
HILT Caliper (HCAL) (IN)	6	23	3	3	23
Gamma Ray (GR) (GAPI)	0	23	3	3	23

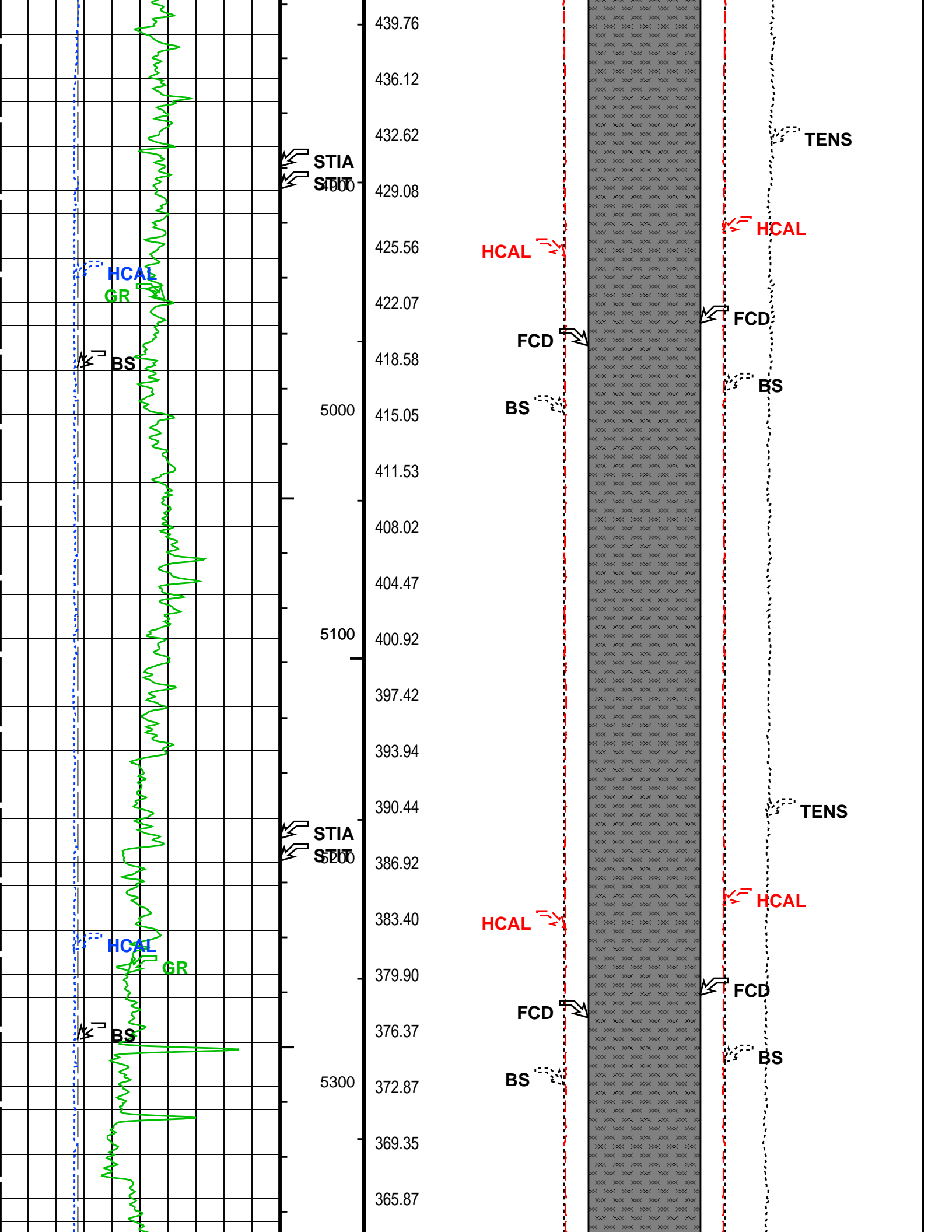


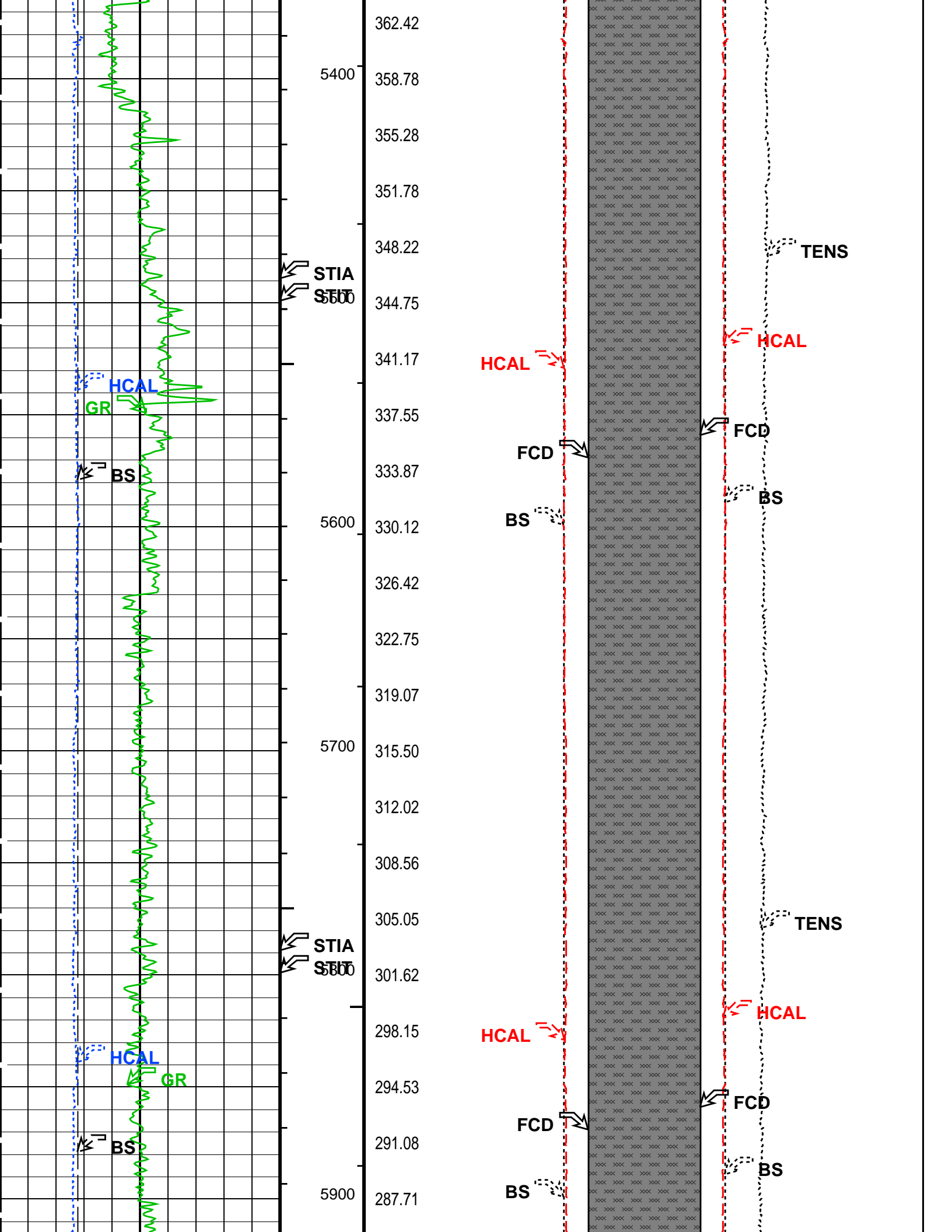


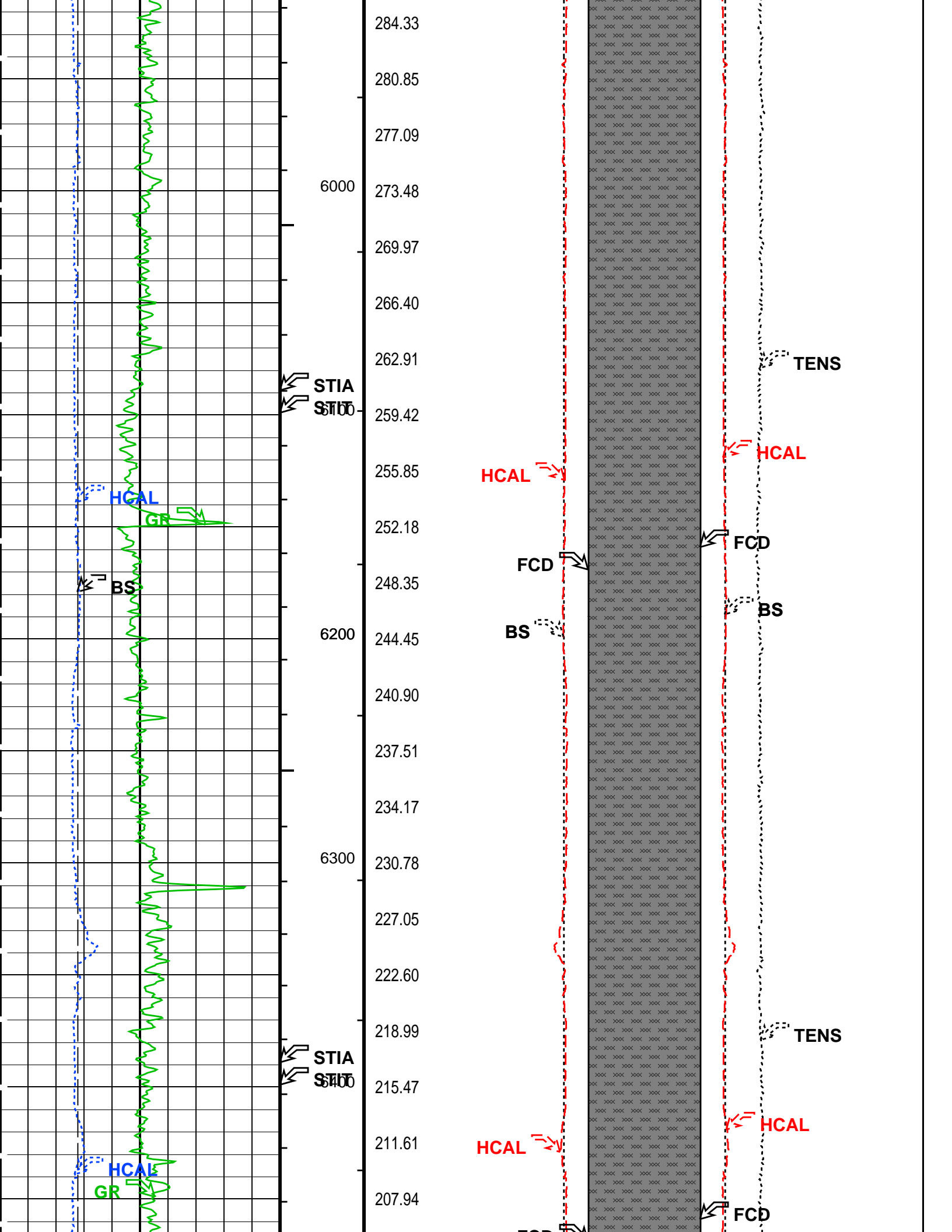


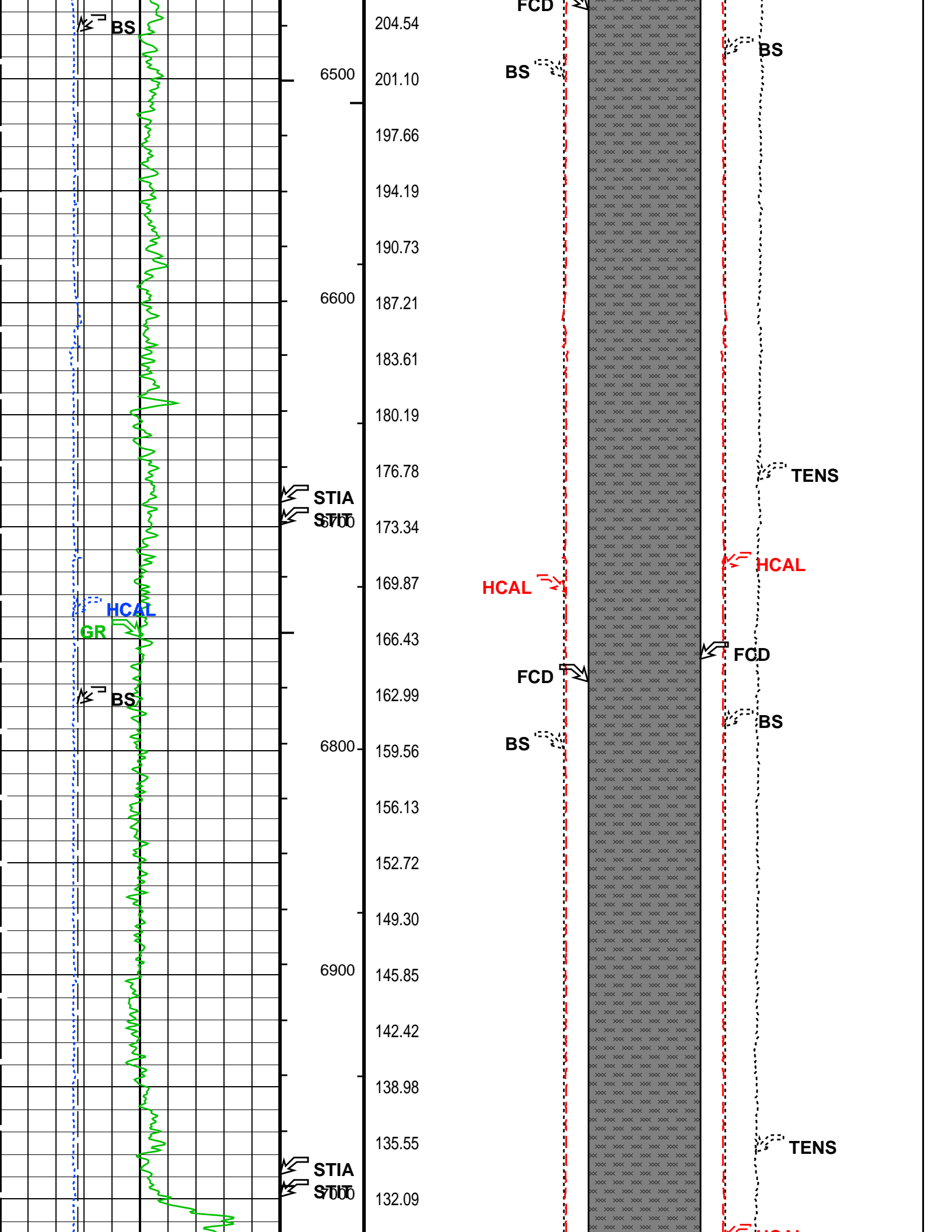


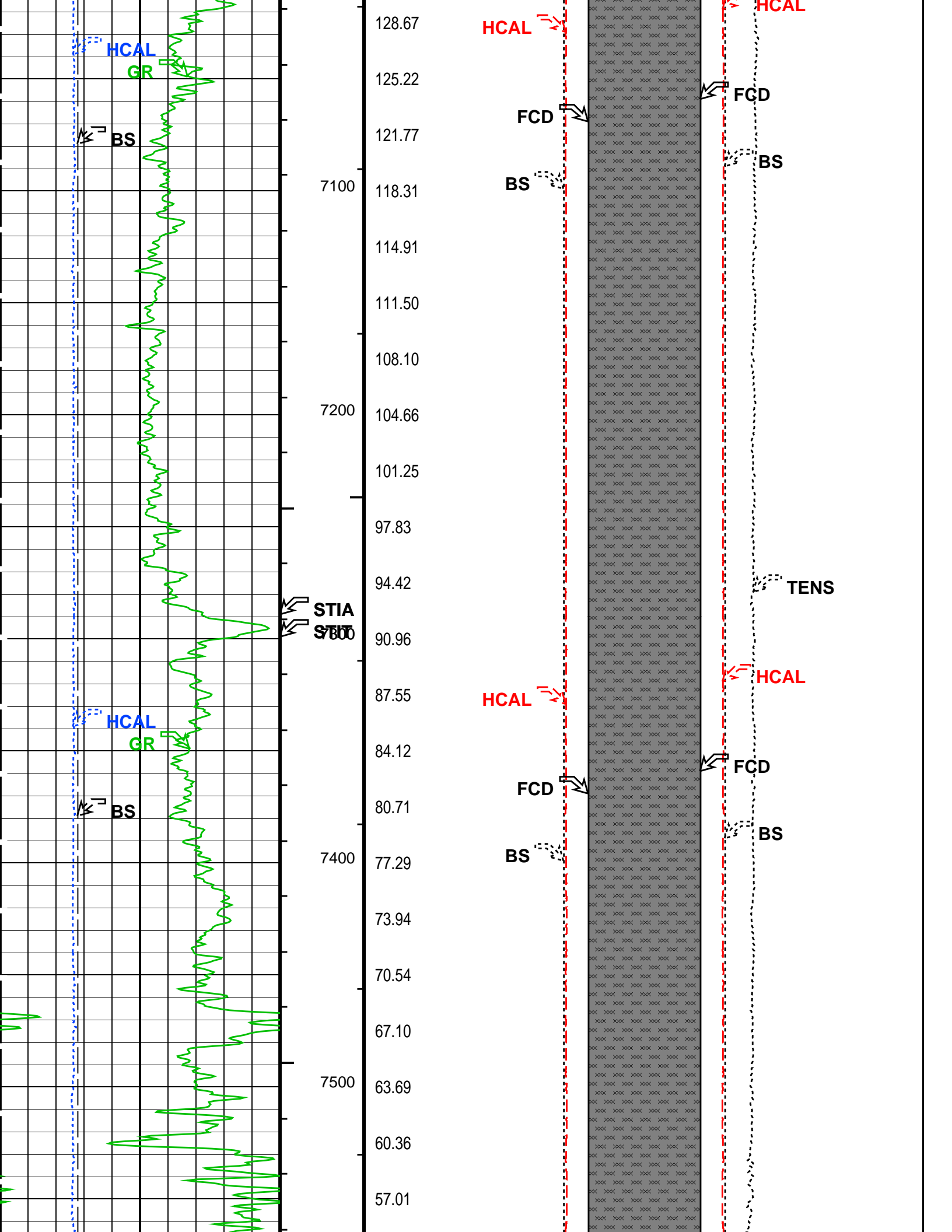


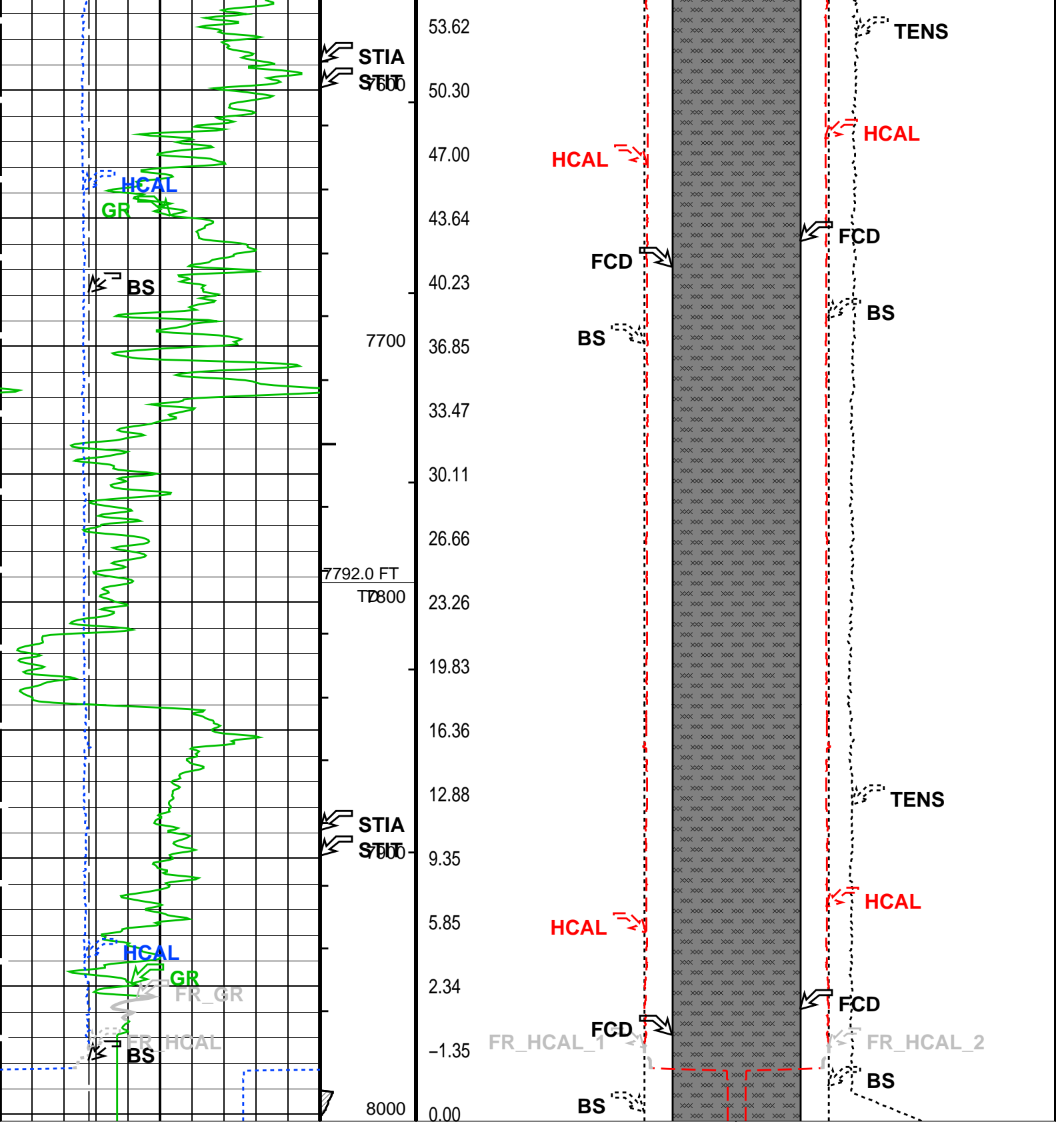












Bit Size (BS) (IN)		Stuck Stretch (STIT) (F)	Bit Size (BS) (IN)		Bit Size (BS) (IN)	
6	16	0	23	3	3	23
Gamma Ray (GR) (GAPI)		Cable Drag From STIA to STIT	FCD2 (FCD) (IN)		FCD3 (FCD) (IN)	
0	200		23	3	3	23
HILT Caliper (HCAL) (IN)		Tool/Tot. Drag From D3T to STIA	HILT Caliper (HCAL) (IN)		HILT Caliper (HCAL) (IN)	
6	16		23	3	3	23

Cement Volume  
(ICV)  
(F3)

Tension (TENS)  
6000 (LBF) 0

FCD2 – FCD3  
From FCD2 to FCD3

**PIP SUMMARY**

- ┆ Integrated Hole Volume Minor Pip Every 10 F3
- ┆ Integrated Hole Volume Major Pip Every 100 F3
  - ┆ Integrated Cement Volume Minor Pip Every 10 F3
  - ┆ Integrated Cement Volume Major Pip Every 100 F3

Time Mark Every 60 S

**Parameters**

DLIS Name	Description	Value
BS	MAPC-B: Multimode Array Sonic Power Cartridge Bit Size	8.750 IN
SPVD	DIR: Directional Survey Computation TVD of Starting Point	0 FT
TIMD	Along-hole depth of Tie-in Point	0 FT
TIVD	TVD of Tie-in Point	0 FT
FCD	HOLEV: Integrated Hole/Cement Volume Future Casing (Outer) Diameter	7 IN
HVCS	Integrated Hole Volume Caliper Selection	HCAL
LBFR	STI: Stuck Tool Indicator Trigger for MAXIS First Reading Label	TDL
STKT	STI Stuck Threshold	2.5 FT
TDD	Total Depth - Driller	7983.00 FT
TDL	Total Depth - Logger	7992.00 FT
DO	System and Miscellaneous Depth Offset for Playback	0.0 FT
DORL	Depth Offset for Repeat Analysis	0.0 FT
PP	Playback Processing	OFF
TD	Total Depth	7992 FT

Format: G\_DCAL\_FORMAT Vertical Scale: 2" per 100' Graphics File Created: 21-Nov-2012 14:35

**OP System Version: 19C2-270**

HAIT-H	19C2-270	HILTH-FTB	19C2-270
GPIT-F	19C2-270	HNGC-B	19C2-270
HNGS-BA	19C2-270	PPC1	19C2-270
MAXS-B	19C2-270	MAPC-B	19C2-270
EDTC-B	19C2-270		

**Input DLIS Files**

DEFAULT AIT\_TLD\_MCFL\_CNL\_IS\_018LUP FN:17 PRODUCER 20-Nov-2012 13:42 8002.5 FT 2098.5 FT

**Output DLIS Files**

DEFAULT AIT\_TLD\_MCFL\_CNL\_IS\_005PUP FN:4 PRODUCER 21-Nov-2012 14:35

Company: **Conoco Phillips Company**

**Schlumberger**

Well: **Tebo3-1P**

Field: **Wildcat**

County: **Arapahoe**

State: **Colorado**

Platform Express  
Cement Volume