

**CONOCO/PHILLIPS COMPANY EBUSINESS
DO NOT MAIL-600 N DAIRY ASHFORD
HOUSTON, Texas**

Tebo 3-1H

H&P 280

Post Job Summary **Plug Service - Whipstock**

Date Prepared: 11/29/2012
Version: 1

Service Supervisor: VIGIL, NICHOLAS

Submitted by: KENNEDY, HERRON

HALLIBURTON

Wellbore Geometry

Job Tubulars					MD	
Type	Description	Size in	ID in	Wt lbm/ft	Top ft	Bottom ft
Casing	Surface Casing	9.63	8.921	36.00	0.00	2,000.00
Drill Pipe	Drill Pipe	4.00	3.340	14.00	0.00	7,000.00

HALLIBURTON

Pumping Schedule

Stage /Plug #	Fluid #	Fluid Type	Fluid Name	Surface Density lbm/gal	Downhole Volume
1	1	Spacer	Clean Spacer III	10.50	50.0 bbl
1	2	Cement Slurry	PLUGCEM 15.8#	15.80	50.0 bbl

Fluids Pumped

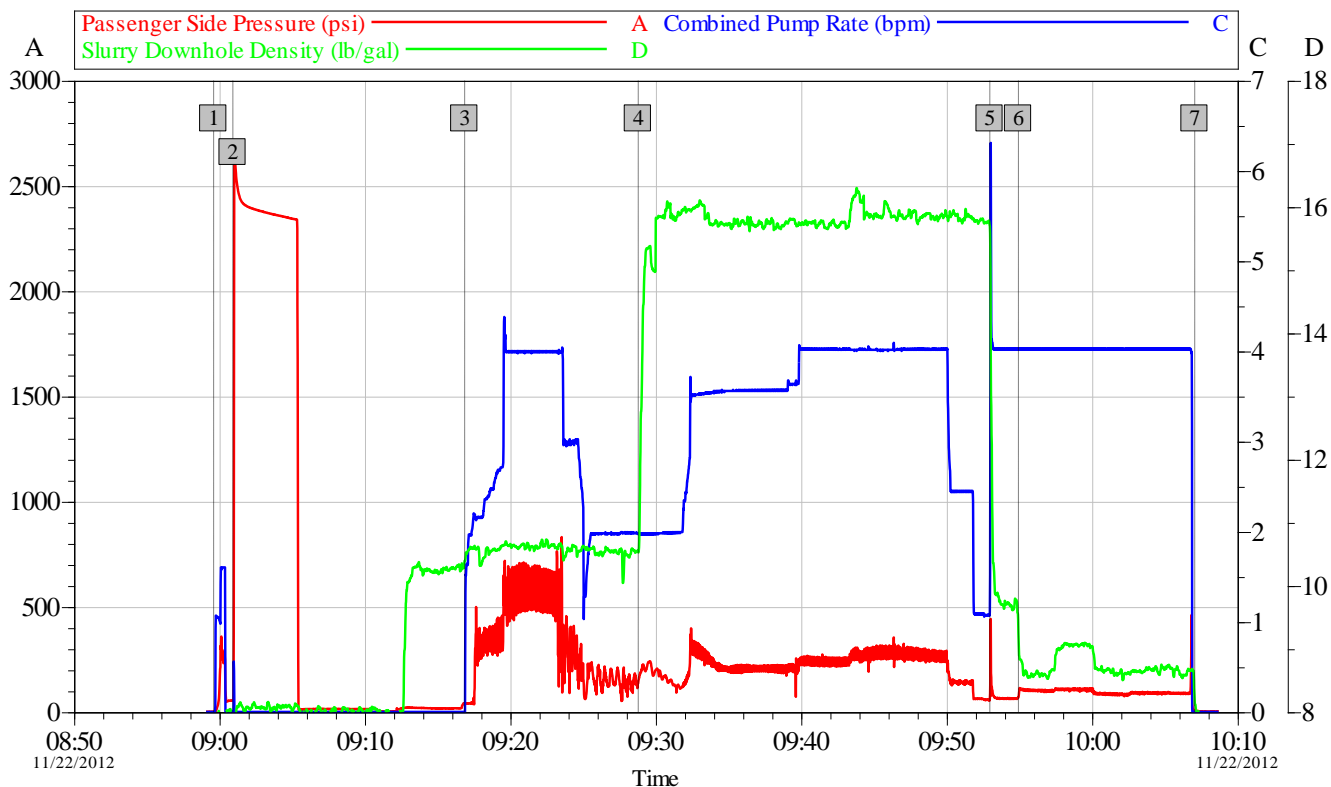
Stage/Plug # 1 Fluid 1: Clean Spacer III

Fluid Density: 10.50 lbm/gal
Fluid Volume: 50.00 bbl

Stage/Plug # 1 Fluid 2: PLUGCEM 15.8#
 PLUGCEM (TM) SYSTEM

Fluid Weight: 15.80 lbm/gal
Slurry Yield: 1.52 ft3/sack
Total Mixing Fluid: 6.19 Gal

Data Acquisition



Global Event Log								
Intersection		Intersection		Intersection				
1	Start Job	08:59:37	2	Pressure Test	09:00:57	3	Pump Spacer	09:16:53
4	Pump 15.8ppg PlugCem	09:28:49	5	Pump Spacer	09:52:59	6	Displace Drill Pipe	09:54:57
7	End Job	10:07:05						

OptiCem v6.4.10
03-Dec-12 13:00

HALLIBURTON

Service Supervisor Reports

Job Log

Date/Time	Chart #	Activity Code	Pump Rate	Cum Vol	Pump		Pressure (psig)		Comments
11/22/2012 04:30		Arrive At Loc							WELL SITE ASSESMENT, HAZARD HUNT, WATER TEST, RIG UP SAFETY MEETING, WAITED ON RIG
11/22/2012 12:10		Start Job							PRE JOB SAFETY MEETING
11/22/2012 12:10		Test Lines							PRESSURE TESTED LINES TO 2500 PSI
11/22/2012 12:25		Pump Spacer 1	4	35				500.0	10.5 PPG CLEAN SPACER
11/22/2012 12:45		Pump Cement	4	84				240.0	15.8 PPG PLUGCEM (310 SKS), WEIGHT VERIFIED BY SCALE
11/22/2012 13:02		Pump Spacer 2	4	5				79.0	10.5 PPG CLEAN SPACER
11/22/2012 13:04		Pump Displacement	4	48				95.0	9.2 PPG RIG MUD
11/22/2012 13:20		End Job							RIG DOWN SAFETY MEETING

The Road to Excellence Starts with Safety

Sold To #: 352431	Ship To #: 2963241	Quote #:	Sales Order #: 900019724
Customer: CONOCO/PHILLIPS COMPANY EBUSINESS		Customer Rep:	
Well Name: Tebo 3		Well #: 1H	API/UWI #: 05-005-07197
Field: WARRENBURG	City (SAP): BENNETT	County/Parish: Arapahoe	State: Colorado
Lat: N 39.65 deg. OR N 39 deg. 39 min. 0.068 secs.		Long: W 104.53 deg. OR W -105 deg. 28 min. 12.022 secs.	
Contractor: H&P		Rig/Platform Name/Num: 280	
Job Purpose: Plug Service - Whipstock			
Well Type: Development Well		Job Type: Plug Service - Whipstock	
Sales Person: AARON, WESLEY		Srvc Supervisor: VIGIL, NICHOLAS	MBU ID Emp #: 443481

Job Personnel

HES Emp Name	Exp Hrs	Emp #	HES Emp Name	Exp Hrs	Emp #	HES Emp Name	Exp Hrs	Emp #
EDWARDS, MICHEAL H	0.0	522592	HALE, ROBERT E	0.0	470588	OTERI, VAUGHN Steeves	0.0	443828
ROMERO, JOSEPH Michael	0.0	512137	VIGIL, NICHOLAS	0.0	443481			

Equipment

HES Unit #	Distance-1 way	HES Unit #	Distance-1 way	HES Unit #	Distance-1 way	HES Unit #	Distance-1 way
10857012C	45 mile	11036298	45 mile	11398490	45 mile	11532299	45 mile
11542577	45 mile	11633846C	45 mile				

Job Hours

Date	On Location Hours	Operating Hours	Date	On Location Hours	Operating Hours	Date	On Location Hours	Operating Hours
TOTAL			Total is the sum of each column separately					

Job

Job Times

Formation Name					Date	Time	Time Zone
Formation Depth (MD)	Top		Bottom		Called Out	22 - Nov - 2012	00:00 MST
Form Type	BHST				On Location	22 - Nov - 2012	04:30 MST
Job depth MD	8270. ft		Job Depth TVD	8270. ft	Job Started	22 - Nov - 2012	12:10 MST
Water Depth	Wk Ht Above Floor				Job Completed	22 - Nov - 2012	01:20 MST
Perforation Depth (MD)	From		To		Departed Loc	22 - Nov - 2012	14:30 MST

Well Data

Description	New / Used	Max pressure psig	Size in	ID in	Weight lbm/ft	Thread	Grade	Top MD ft	Bottom MD ft	Top TVD ft	Bottom TVD ft
Surface Casing	Unknown		9.625	8.921	36.			.	2000.	.	2000.
Drill Pipe	Unknown		4.	3.34	14.			.	7000.	.	7000.

Fluid Data

Stage/Plug #: 1

Fluid #	Stage Type	Fluid Name	Qty	Qty uom	Mixing Density lbm/gal	Yield ft ³ /sk	Mix Fluid Gal/sk	Rate bbl/min	Total Mix Fluid Gal/sk
---------	------------	------------	-----	---------	------------------------	---------------------------	------------------	--------------	------------------------

HALLIBURTON***Cementing Job Summary***

1	Clean Spacer		50.00	bbl	10.5	3.86	24.21	.0	
2	PLUGCEM 15.8#	PLUGCEM (TM) SYSTEM (452969)		sacks	15.8	1.52	6.19		6.19
	6.19 Gal	FRESH WATER							
<i>The Information Stated Herein Is Correct</i>			<i>Customer Representative Signature</i>						

