

**CONOCO/PHILLIPS COMPANY EBUSINESS  
DO NOT MAIL- 600 N DAIRY ASHFORD  
HOUSTON, Texas**

Tebo 3-1H

H&P 280

## **Post Job Summary** **Cement Surface Casing**

Date Prepared: 11/29/2012  
Version: 1

Service Supervisor: PICKELL, CHRISTOPHER

Submitted by: KENNEDY, HERRON

**HALLIBURTON**

## ***Wellbore Geometry***

---

| Job Tubulars      |                |         |        |           | MD     |           | Shoe Joint Length<br>ft |
|-------------------|----------------|---------|--------|-----------|--------|-----------|-------------------------|
| Type              | Description    | Size in | ID in  | Wt lbm/ft | Top ft | Bottom ft |                         |
| Casing            | Surface Casing | 9.63    | 8.921  | 36.00     | 0.00   | 2,210.00  | 40.00                   |
| Open Hole Section | Open Hole      |         | 12.250 |           | 124.00 | 2,215.00  |                         |

# HALLIBURTON

## Pumping Schedule

| Stage/<br>Plug # | Fluid<br># | Fluid Type       | Fluid Name         | Surface<br>Density<br>lbm/gal | Downhole<br>Volume |
|------------------|------------|------------------|--------------------|-------------------------------|--------------------|
| 1                | 1          | Spacer           | Fresh Water Spacer | 8.33                          | 40.0 bbl           |
| 1                | 2          | Cement<br>Slurry | SwiftCem 12#       | 12.00                         | 500.0 sacks        |
| 1                | 3          | Cement<br>Slurry | SwiftCem 13.#      | 13.00                         | 200.0 sacks        |

## Fluids Pumped

**Stage/Plug # 1      Fluid 1:**      Fresh Water Spacer

Fluid Density: 8.33 lbm/gal  
Fluid Volume: 40.00 bbl

**Stage/Plug # 1      Fluid 2:**      SwiftCem 12#

SWIFTCEM (TM) SYSTEM

6 %      Enhancer 923  
0.25 lbm      Poly-E-Flake

Fluid Weight: 12.00 lbm/gal  
Slurry Yield: 2.57 ft<sup>3</sup>/sack  
Total Mixing Fluid: 15.11 Gal  
Surface Volume: 500.0 sacks  
Sacks: 500.0 sacks

**Stage/Plug # 1      Fluid 3:**      SwiftCem 13.#

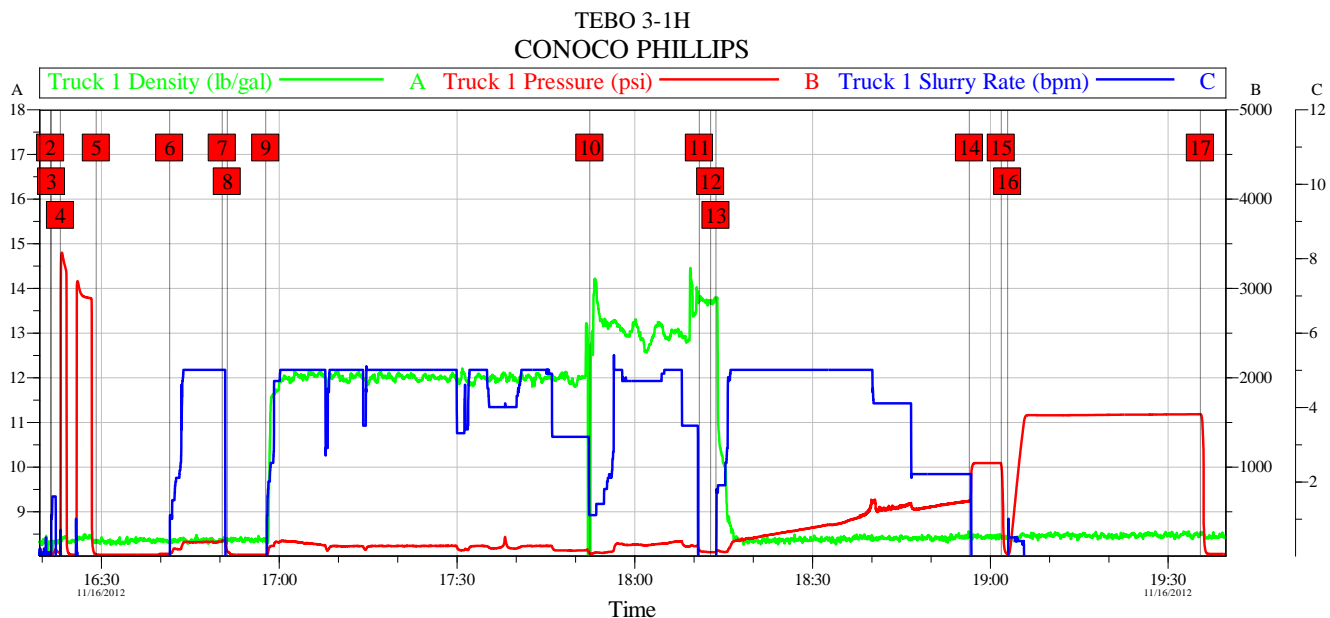
SWIFTCEM (TM) SYSTEM

6 %      Enhancer 923

Fluid Weight: 13.00 lbm/gal  
Slurry Yield: 2.01 ft<sup>3</sup>/sack  
Total Mixing Fluid: 11.01 Gal  
Surface Volume: 200.0 sacks  
Sacks: 200.0 sacks

# HALLIBURTON

## Data Acquisition



| Global Event Log        |                |                     |                |                      |                |              |     |
|-------------------------|----------------|---------------------|----------------|----------------------|----------------|--------------|-----|
| Intersection            | T1P            | Intersection        | T1P            | Intersection         | T1P            | Intersection | T1P |
| 2 Start Job             | 16:21:29 9.000 | 3 Prime Pumps       | 16:21:38 9.143 | 4 Test Lines         | 16:23:09 40.82 |              |     |
| 5 Safety Meeting        | 16:29:12 17.48 | 6 Pump Water W/Dye  | 16:41:35 24.00 | 7 Drop Bottom Plug   | 16:50:27 170.4 |              |     |
| 8 Shutdown              | 16:51:18 54.82 | 9 Pump Swiftcem 12# | 16:57:48 14.00 | 10 Pump Swiftcem 13# | 17:52:29 26.63 |              |     |
| 11 Shutdown             | 18:10:58 64.04 | 12 Drop Top Plug    | 18:12:52 42.00 | 13 Pump Displacement | 18:13:46 42.00 |              |     |
| 14 Bump Plug            | 18:56:32 616.1 | 15 Check Floats     | 19:01:54 1020  | 16 Pressure Up Well  | 19:02:59 23.32 |              |     |
| 17 Release CSG Pressure | 19:35:30 1587  |                     |                |                      |                |              |     |

|                    |                     |                  |              |                |           |
|--------------------|---------------------|------------------|--------------|----------------|-----------|
| Customer:          | CONOCO PHILLIPS     | Job Date:        | 16-Nov-2012  | Sales Order #: | 900006540 |
| Well Description:  | TEBO 3-1H           | UWI:             |              |                |           |
| SERVICE SUPERVISOR | CHRISTOPHER PICKELL | SERVICE OPERATOR | VAUGHN OTERI |                |           |

OptiCem v6.4.10  
16-Nov-12 19:53

# HALLIBURTON

## Service Supervisor Reports

### Job Log

| Date/Time        | Chart # | Activity Code           | Pump Rate | Cum Vol | Pump |  | Pressure (psig) | Comments  |
|------------------|---------|-------------------------|-----------|---------|------|--|-----------------|---|
| 11/16/2012 16:21 |         | Start Job               |           |         |      |  |                 | 200 SKS OF PREMIUM G WITH/CALSEAL WAS BROUGHT TO LOCATION FOR TOP OUT AND WAS NOT USED. ONLY CHARGED FOR 4 RADIOS. 2 CREWMEN LEFT BEFORE START OF JOB |
| 11/16/2012 16:23 |         | Test Lines              | 1         |         |      |  | 300.0           | PRESSURE TEST LINES TO 3000 PSI. CHECK FOR VISIBLE LEAKS AND PRESSURE LOSS  |
| 11/16/2012 16:41 |         | Pump Spacer 1           | 5         | 40      |      |  | 140.0           | PUMP WATER SPACER. FIRST 20 BBL OF FRESH WATER LAST 20 BBL WITH RED DYE   |
| 11/16/2012 16:50 |         | Drop Bottom Plug        |           |         |      |  |                 | PLUG PRELOADED. WITNESSED BY COMPANY MAN  |
| 11/16/2012 16:51 |         | Shutdown                |           |         |      |  |                 | SHUTDOWN TO LOAD THE TOP PLUG   |
| 11/16/2012 16:57 |         | Pump Lead Cement        | 5         | 224     |      |  | 170.0           | PUMP SWIFTCEM CEMENT 500 SKS 12 PPG 2.51 CUFT/SK 14.84 GAL/SK MIXED WITH RIG WATER  |
| 11/16/2012 17:52 |         | Pump Tail Cement        | 5         | 70      |      |  | 190.0           | PUMP SWIFTCEM CEMENT 200 SKS 13 PPG 1.97 CUFT/SK 10.82 GAL/SK MIXED WITH RIG WATER. RETURNS WERE LOST FOR THE FIRST 13 BBL OF TAIL CEMENT             |
| 11/16/2012 18:10 |         | Shutdown                |           |         |      |  |                 | WASH UP ON TOP OF THE PLUG  |
| 11/16/2012 18:12 |         | Drop Top Plug           |           |         |      |  |                 | PLUG LOADED AFTER PUMPING WATER SPACER DO TO ONLY HAVING A SINGLE STACK PLUG CONTAINER. WITNESSED BY COMPANY MAN                                      |
| 11/16/2012 18:13 |         | Pump Displacement       | 5         | 167.2   |      |  | 590.0           | PUMP DISPLACEMENT USING RIG WATER   |
| 11/16/2012 18:56 |         | Bump Plug               | 2         |         |      |  | 630.0           | CALCULATED PRESSURE TO LAND WAS 477. PLUG LANDED AT 630 PSI GOING 500 PSI OVER FINAL LIFT PRESSURE  |
| 11/16/2012 19:01 |         | Check Floats            |           |         |      |  |                 | PRESSURE WAS HELD FOR 5 MINUTES THEN RELEASED. FLOATS HELD. 3/4 BBL BACK TO OUR TANKS   |
| 11/16/2012 19:02 |         | Pressure Up Well        | 0.5       | 1       |      |  | 1500.0          | PRESSURE TEST THE CASING TO 1500 PSI AND HOLD FOR 30 MINUTES. PRESSURE CLIMBED TO 1585  |
| 11/16/2012 19:35 |         | Release Casing Pressure |           |         |      |  | 1585.0          | PRESSURE WAS RELEASED AFTER THE 30 MINUTES. 1.75 BBL BACK TO OUR TANKS  |
| 11/16/2012 19:36 |         | End Job                 |           |         |      |  |                 | 170 BBL OF CEMENT BACK TO SURFACE   |

## The Road to Excellence Starts with Safety

|  |                     |                                       |                          |
|--|---------------------|---------------------------------------|--------------------------|
| Sold To #: 352431                              | Ship To #: 2963241  | Quote #:                              | Sales Order #: 900006540 |
| Customer: CONOCO/PHILLIPS COMPANY<br>EBUSINESS |                     | Customer Rep: Evans, Wes              |                          |
| Well Name: Tebo                                |                     | Well #: 3-1H                          | API/UWI #: 0             |
| Field: WATTENBERG                              | City (SAP): BENNETT | County/Parish: Arapahoe               | State: Colorado          |
| Job Purpose: Cement Surface Casing             |                     |                                       |                          |
| Well Type: Development Well                    |                     | Job Type: Cement Surface Casing       |                          |
| Sales Person: AARON, WESLEY                    |                     | Srvc Supervisor: PICKELL, CHRISTOPHER | MBU ID Emp #: 396838     |

## Job Personnel

| HES Emp Name             | Exp Hrs | Emp #  | HES Emp Name                | Exp Hrs | Emp #  | HES Emp Name              | Exp Hrs | Emp #  |
|--------------------------|---------|--------|-----------------------------|---------|--------|---------------------------|---------|--------|
| CHISLUM, DENNIS          | 0.0     | 512130 | MEADOWS, DANIEL<br>Graham   | 0.0     | 500668 | MULLER, MICHEL B          | 0.0     | 529830 |
| OTERI, VAUGHN<br>Steeves | 0.0     | 443828 | PICKELL,<br>CHRISTOPHER Lee | 0.0     | 396838 | ROMERO, JOSEPH<br>Michael | 0.0     | 512137 |

## Equipment

| HES Unit # | Distance-1 way | HES Unit # | Distance-1 way | HES Unit # | Distance-1 way | HES Unit # | Distance-1 way |
|------------|----------------|------------|----------------|------------|----------------|------------|----------------|
| 10248062C  | 44 mile        | 10972458   | 44 mile        | 11019275C  | 44 mile        | 11064535   | 44 mile        |
| 11562546C  | 44 mile        | 11566182   | 44 mile        | 11605597   | 44 mile        | 11667703C  | 44 mile        |

## Job Hours

| Date | On Location Hours | Operating Hours | Date | On Location Hours | Operating Hours | Date | On Location Hours | Operating Hours |
|------|-------------------|-----------------|------|-------------------|-----------------|------|-------------------|-----------------|
|      |                   |                 |      |                   |                 |      |                   |                 |

TOTAL Total is the sum of each column separately

## Job

## Job Times

| Formation Name         |          |                   |          |  |               | Date            | Time  | Time Zone |
|------------------------|----------|-------------------|----------|--|---------------|-----------------|-------|-----------|
| Formation Depth (MD)   | Top      |                   | Bottom   |  | Called Out    | 15 - Nov - 2012 | 23:30 | MST       |
| Form Type              |          | BHST              |          |  | On Location   | 16 - Nov - 2012 | 02:40 | MST       |
| Job depth MD           | 2215. ft | Job Depth TVD     | 2215. ft |  | Job Started   | 16 - Nov - 2012 | 16:21 | MST       |
| Water Depth            |          | Wk Ht Above Floor | 5. ft    |  | Job Completed | 16 - Nov - 2012 | 19:36 | MST       |
| Perforation Depth (MD) | From     |                   | To       |  | Departed Loc  | 16 - Nov - 2012 | 21:00 | MST       |

## Well Data

| Description    | New / Used | Max pressure psig | Size in | ID in | Weight lbm/ft | Thread | Grade | Top MD ft | Bottom MD ft | Top TVD ft | Bottom TVD ft |
|----------------|------------|-------------------|---------|-------|---------------|--------|-------|-----------|--------------|------------|---------------|
| Open Hole      |            |                   |         | 12.25 |               |        |       | 124.      | 2215.        | .          |               |
| Surface Casing | Unknown    |                   | 9.625   | 8.921 | 36.           |        |       | .         | 2210.        | .          |               |

## Fluid Data

## Stage/Plug #: 1

| Fluid # | Stage Type | Fluid Name | Qty | Qty uom | Mixing Density lbm/gal | Yield ft <sup>3</sup> /sk | Mix Fluid Gal/sk | Rate bbl/min | Total Mix Fluid Gal/sk |
|---------|------------|------------|-----|---------|------------------------|---------------------------|------------------|--------------|------------------------|
|---------|------------|------------|-----|---------|------------------------|---------------------------|------------------|--------------|------------------------|

|  |                       |                                |                                   |       |      |      |       |     |       |
|--|-----------------------|--------------------------------|-----------------------------------|-------|------|------|-------|-----|-------|
| 1  | Fresh Water<br>Spacer |                                | 40.00                             | bbl   | 8.33 | .0   | .0    | .0  |       |
| 2  | SwiftCem 12#          | SWIFTCEM (TM) SYSTEM (452990)  | 500.0                             | sacks | 12.  | 2.57 | 15.11 | 5.0 | 15.11 |
|  | 6 %                   | ENHANCER 923, BULK (101894003) |                                   |       |      |      |       |     |       |
|  | 0.25 lbm              | POLY-E-FLAKE (101216940)       |                                   |       |      |      |       |     |       |
|  | 15.11 Gal             | FRESH WATER                    |                                   |       |      |      |       |     |       |
| 3  | SwiftCem 13.#         | SWIFTCEM (TM) SYSTEM (452990)  | 200.0                             | sacks | 13.  | 2.01 | 11.01 | 5.0 | 11.01 |
|  | 6 %                   | ENHANCER 923, BULK (101894003) |                                   |       |      |      |       |     |       |
|  | 11.01 Gal             | FRESH WATER                    |                                   |       |      |      |       |     |       |
| The Information Stated Herein Is Correct |                       |                                | Customer Representative Signature |       |      |      |       |     |       |

