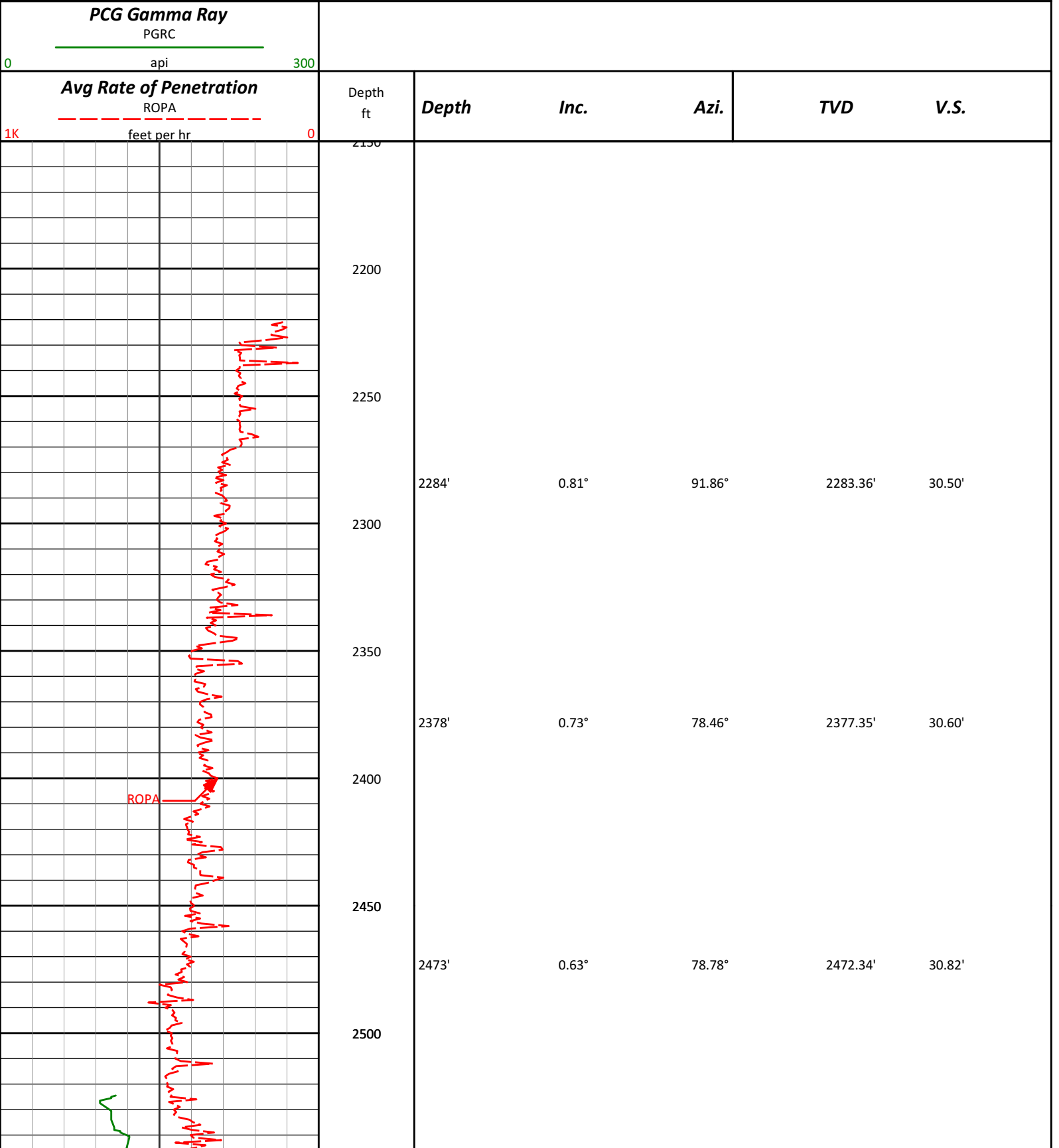


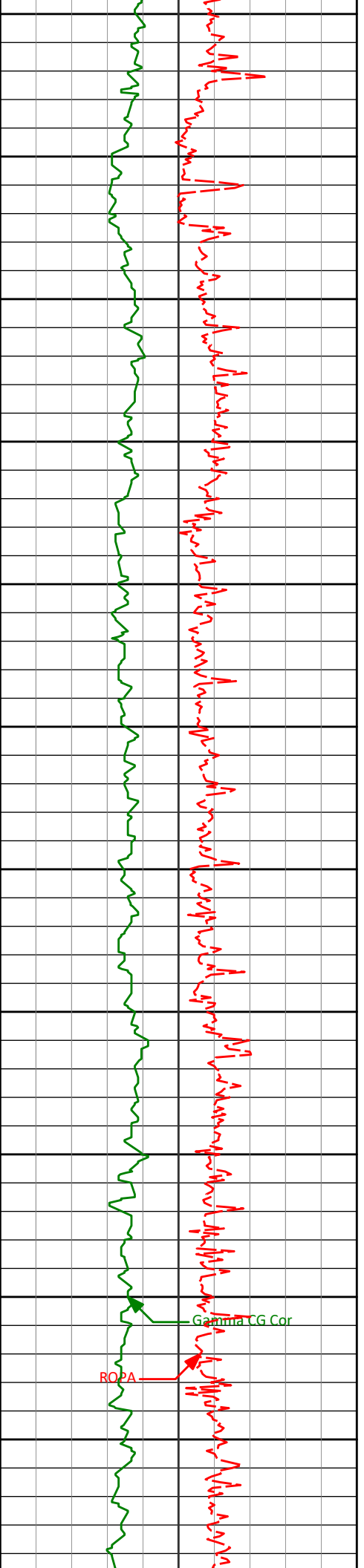
HALLIBURTON

Sperry Drilling Services

MD Main Log 1:600

Conoco Phillips
Tebo 3-1H
H&P 280
Araphaoe County



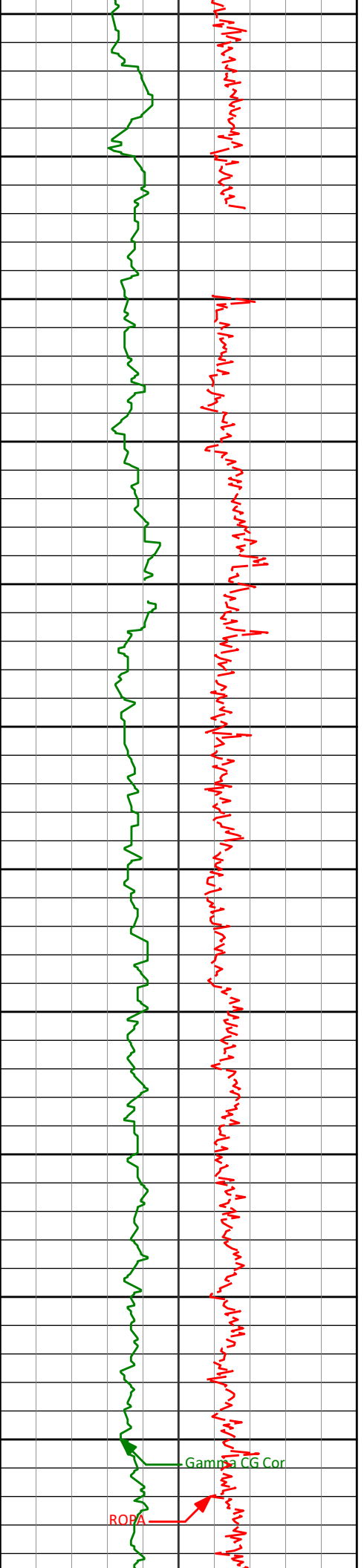


2550
2600
2650
2700
2750
2800
2850
2900
2950
3000
3050

| | | | | |
|-------|-------|---------|----------|--------|
| 2568' | 0.65° | 95.24° | 2567.34' | 30.87' |
| 2663' | 0.50° | 95.21° | 2662.33' | 30.79' |
| 2758' | 0.24° | 91.55° | 2757.33' | 30.74' |
| 2853' | 0.18° | 108.11° | 2852.33' | 30.69' |
| 2948' | 0.12° | 84.03° | 2947.33' | 30.65' |
| 3043' | 0.03° | 243.66° | 3042.33' | 30.65' |

Gamma CG Cor

ROPA



3100

3138'

0.04°

4.01°

3137.33'

30.68'

3150

3200

3233'

0.09°

89.75°

3232.33'

30.71'

3250

3300

3328'

0.15°

125.17°

3327.33'

30.64'

3350

3400

3423'

0.35°

186.19°

3422.33'

30.28'

3450

3500

3518'

0.44°

200.57°

3517.33'

29.64'

3550

3600

3612'

0.25°

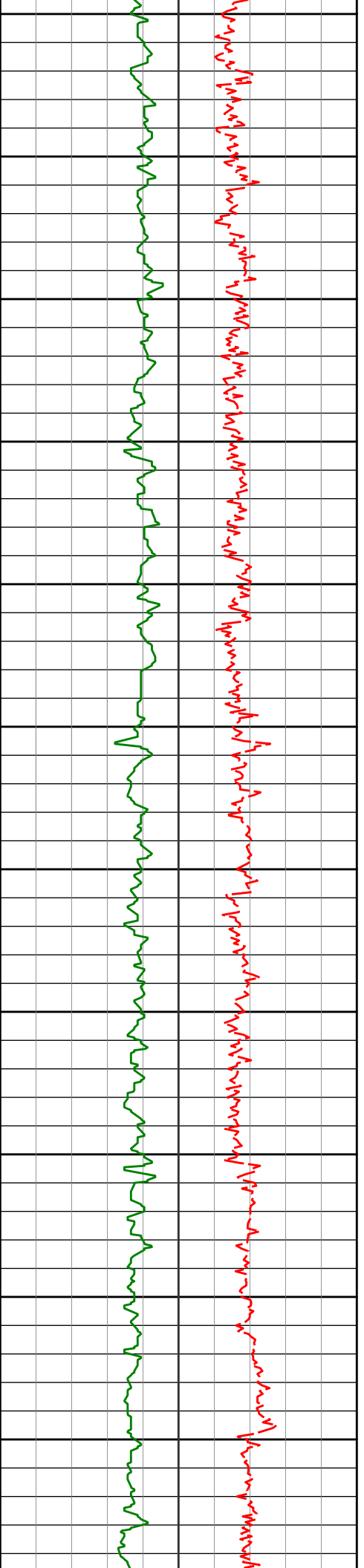
191.47°

3611.32'

29.10'

Gamma CG Cor

ROPA



3650

3700

3750

3800

3850

3900

3950

4000

4050

4100

4150

3707'

0.15°

221.54°

3706.32'

28.81'

3802'

0.39°

182.08°

3801.32'

28.39'

3897'

0.38°

163.00°

3896.32'

27.76'

3992'

0.28°

165.22°

3991.32'

27.24'

4087'

0.44°

166.77°

4086.32'

26.67'

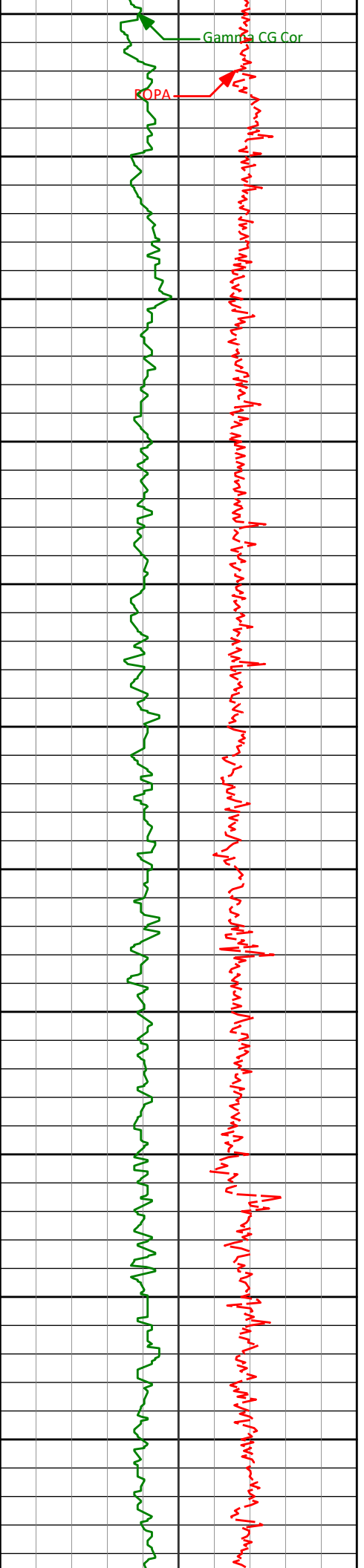
4182'

0.15°

191.29°

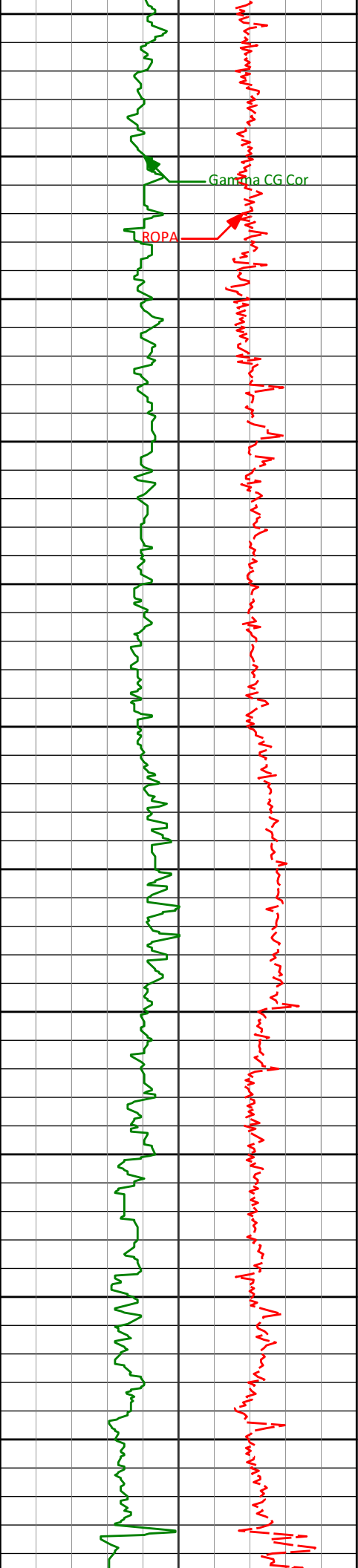
4181.32'

26.19'

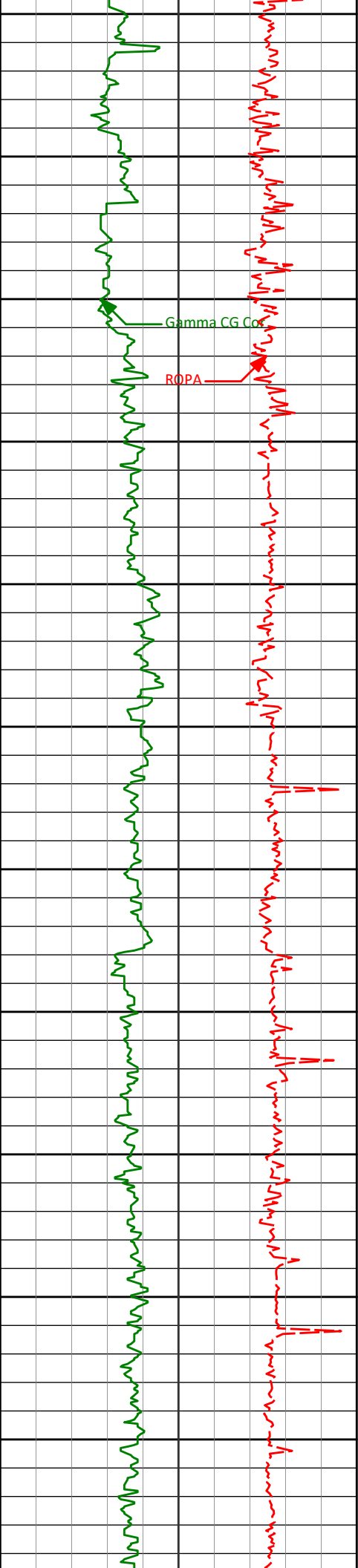


4200
4250
4300
4350
4400
4450
4500
4550
4600
4650
4700

| | | | | |
|-------|-------|---------|----------|--------|
| 4277' | 0.39° | 220.95° | 4276.31' | 25.82' |
| 4372' | 0.40° | 213.15° | 4371.31' | 25.29' |
| 4467' | 0.09° | 183.59° | 4466.31' | 24.94' |
| 4562' | 0.12° | 192.19° | 4561.31' | 24.77' |
| 4656' | 0.11° | 235.04° | 4655.31' | 24.62' |



| | | | | | |
|------|-------|-------|---------|----------|--------|
| 4750 | 4751' | 0.28° | 81.07° | 4750.31' | 24.60' |
| 4800 | | | | | |
| 4850 | 4846' | 0.65° | 162.52° | 4845.31' | 24.13' |
| 4900 | | | | | |
| 4950 | 4941' | 0.87° | 151.51° | 4940.30' | 22.98' |
| 5000 | | | | | |
| 5050 | 5036' | 0.89° | 148.54° | 5035.29' | 21.72' |
| 5100 | | | | | |
| 5150 | 5131' | 1.24° | 142.25° | 5130.27' | 20.28' |
| 5200 | | | | | |
| 5250 | 5226' | 1.45° | 134.66° | 5225.25' | 18.62' |



5300
5350
5400
5450
5500
5550
5600
5650
5700
5750
5800

5321'
5416'
5511'
5606'
5701'
5795'

1.74°
1.47°
1.36°
1.11°
0.92°
1.12°

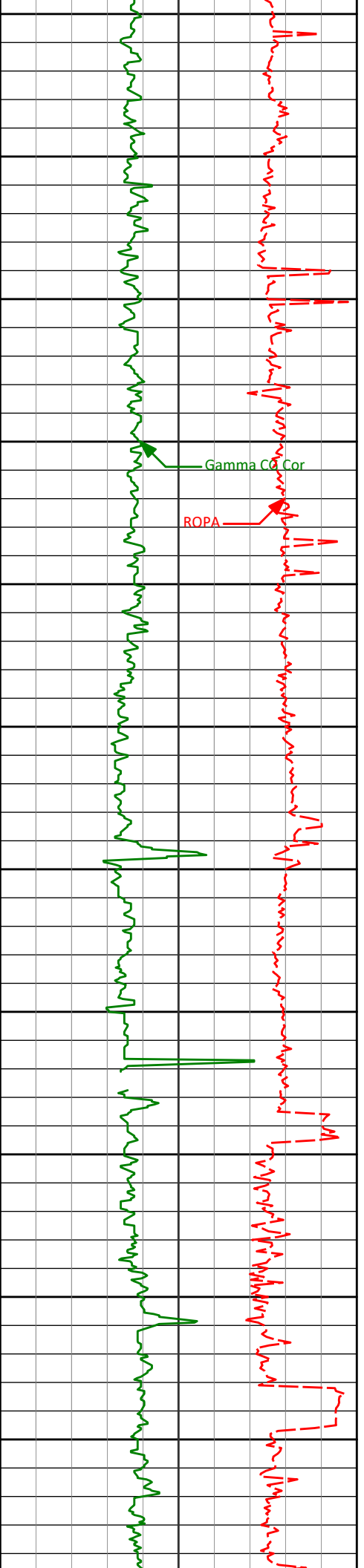
136.62°
137.21°
137.38°
125.42°
88.40°
75.94°

5320.21'
5415.17'
5510.14'
5605.12'
5700.11'
5794.09'

16.73'
14.78'
13.06'
11.69'
11.18'
11.42'

Gamma CG Co

ROPA



5850

5890'

2.08°

86.45°

5889.05'

11.76'

5900

5950

5985'

1.56°

79.32°

5984.01'

12.10'

6000

Gamma Co Cor

ROPA

6050

6080'

1.45°

82.92°

6078.97'

12.49'

6100

6150

6175'

1.76°

94.46°

6173.94'

12.53'

6200

6250

6270'

2.31°

103.55°

6268.88'

11.96'

6300

6333'

1.55°

108.05°

6331.84'

11.40'

6350

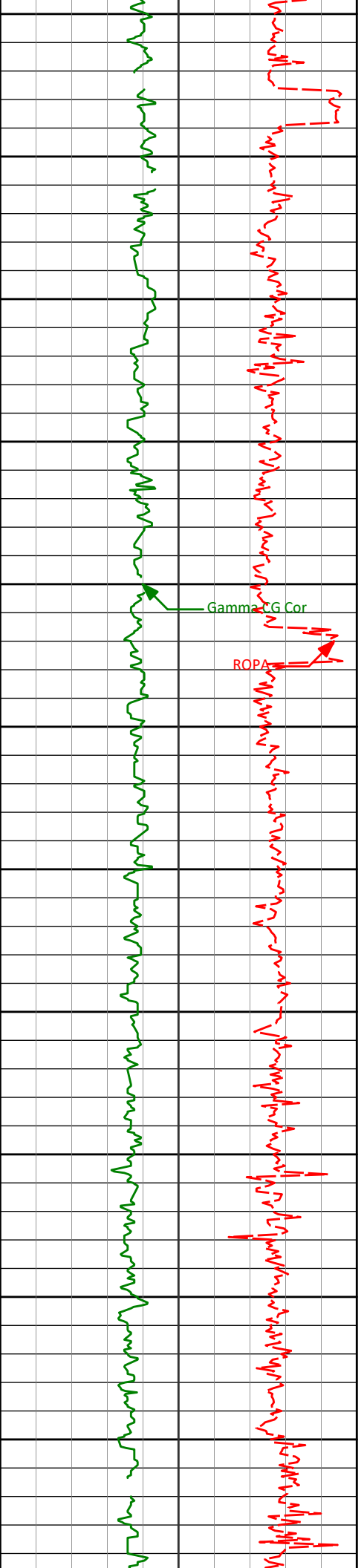
6365'

1.19°

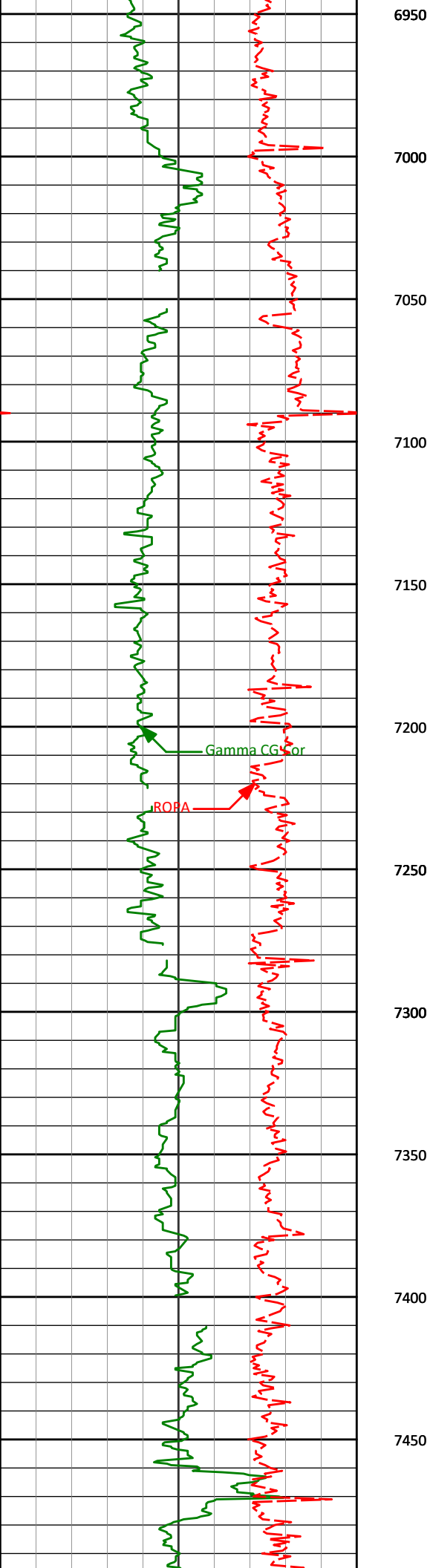
103.63°

6363.83'

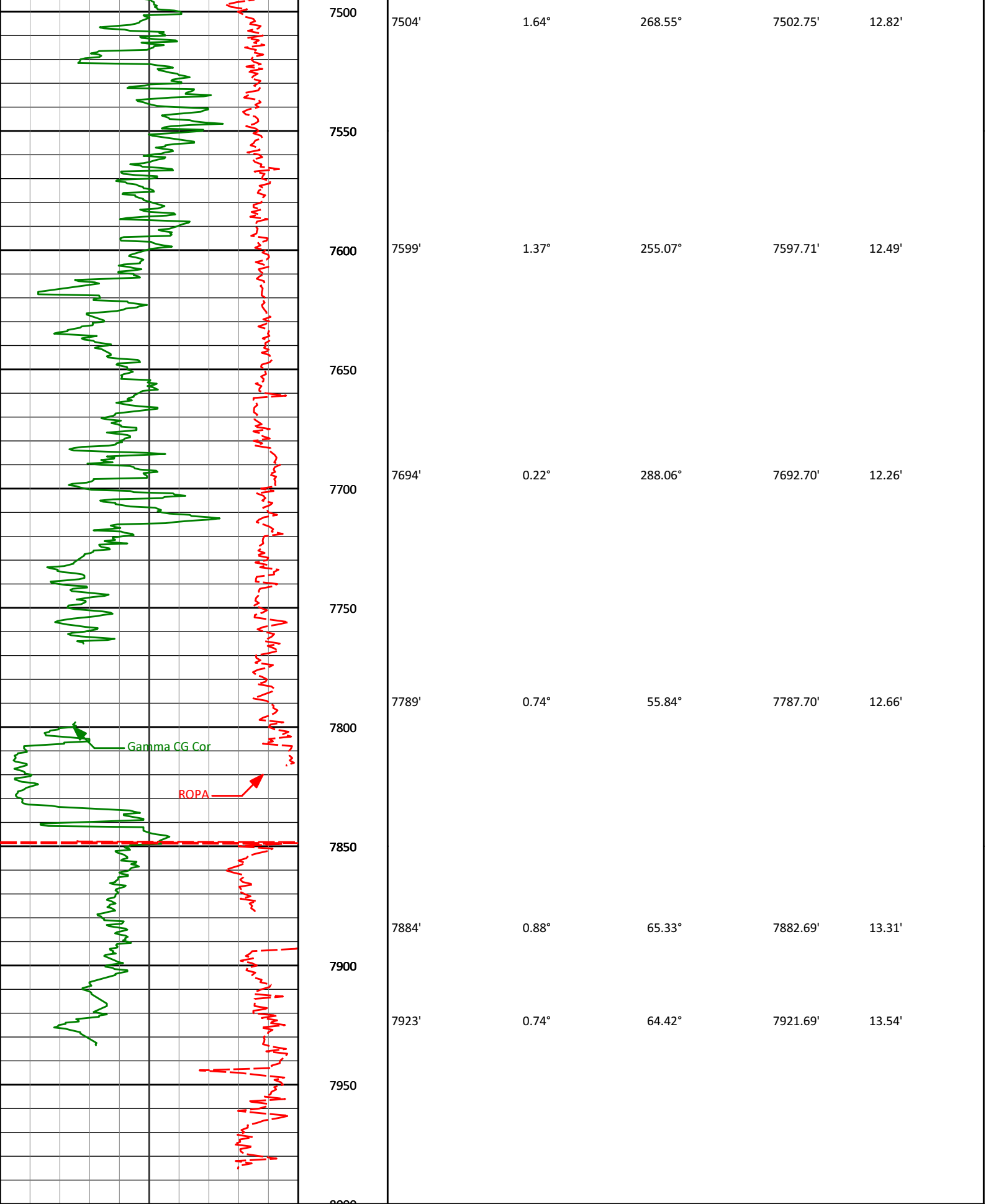
11.19'



| | | | | |
|-------|-------|---------|----------|--------|
| 6400 | | | | |
| 6450 | | | | |
| 6460' | 0.80° | 158.22° | 6458.82' | 10.34' |
| 6491' | 0.46° | 150.40° | 6489.81' | 10.03' |
| 6500 | | | | |
| 6550 | | | | |
| 6555' | 0.63° | 120.88° | 6553.81' | 9.63' |
| 6600 | | | | |
| 6650 | | | | |
| 6650' | 0.51° | 308.18° | 6648.81' | 9.62' |
| 6700 | | | | |
| 6750 | | | | |
| 6745' | 0.41° | 347.70° | 6743.81' | 10.22' |
| 6800 | | | | |
| 6839' | 0.44° | 340.49° | 6837.81' | 10.89' |
| 6850 | | | | |
| 6900 | | | | |
| 6934' | 0.56° | 333.12° | 6932.80' | 11.64' |



| | | | | |
|-------|-------|---------|----------|--------|
| 6950 | | | | |
| 7000 | | | | |
| 7029' | 0.39° | 340.28° | 7027.80' | 12.36' |
| 7050 | | | | |
| 7100 | | | | |
| 7124' | 0.37° | 313.27° | 7122.80' | 12.87' |
| 7150 | | | | |
| 7200 | | | | |
| 7219' | 0.50° | 290.62° | 7217.79' | 13.23' |
| 7250 | | | | |
| 7300 | | | | |
| 7314' | 0.83° | 274.95° | 7312.79' | 13.43' |
| 7350 | | | | |
| 7400 | | | | |
| 7409' | 1.09° | 249.31° | 7407.77' | 13.17' |
| 7450 | | | | |



Avg Rate of Penetration

ROPA

feet per hr

PCG Gamma Ray

PGRC

Depth
ft

Depth

Inc.

Azi.

TVD

V.S.

