



# Weatherford®

Tooke Rockies, Inc.  
(A Weatherford Company)

884 Implement Dr.  
Dickinson, ND 58601  
701-227-4408

717 West Platte  
PO BOX 435  
Casper, WY 82601  
307-265-2124

## Surface Logging Systems

Scale 1:240 (5"=100') Imperial  
Measured Depth Log

Well Name: St. of Colorado 36-1H(Pilot Hole)  
Location: NE/SE Sec.36 T3S-R64W, Adams County, CO  
License Number: API- 05-001-09760-00 Region: DJ Basin  
Spud Date: 1/3/2013 Drilling Completed: 1/8/2013  
Surface Coordinates: 1980' FSL & 250' FEL of NE/SE Sec. 36 T3S-R64W  
Adams County, CO  
Bottom Hole Proposed 1980' FSL & 480' FWL of NW/SW 36 T3S-R64W  
Coordinates:  
Ground Elevation (ft): 5556' K.B. Elevation (ft): 5580'  
Logged Interval (ft): 6000' To: 7700' Total Depth (ft): 7700'  
Formation: Niobrara  
Type of Drilling Fluid: INVERT/OBM/WATER BASE

Printed by MUD.LOG from WellSight Systems 1-800-447-1534 [www.WellSight.com](http://www.WellSight.com)

### OPERATOR

Company: Conoco/Phillips  
Address: Attn: Abby Tomkiewicz  
Three Westlake Park, Rm 14013  
550 Westlake Park Blvd

### GEOLOGIST

Name: Todd Thiesse, Gabe Genitempo  
Company: Tooke Rockies/ Weatherford SLS  
Address: PO Box 435  
Casper, WY. 82602  
307.265.2124

### Supervision

Project Geologist: John Ostergren- Conoco/Phillips  
Drilling Engineer: Gary Hamilton- Conoco/Phillips  
Drilling Sup: Bob Strickler- Conoco/Phillips  
Company Rep: Richard Perez, Frank Holubec(Day Leads)  
Company Rep: Wes Evans, Casey Burns(Night Leads)  
Well Site Safety: Rainey Schexnider, Nick Atkinson  
Contact Geologist: Abby Tomkiewicz- Conoco/Phillips

## Comments

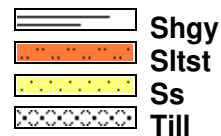
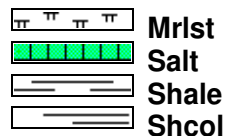
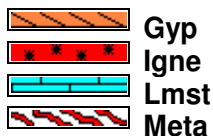
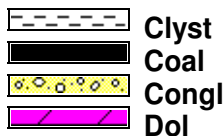
Drilling Co.--H & P, Rig #280

Toolpusher- , Mike Stevens, Josh Coleman

Dir. Co.- Sperry

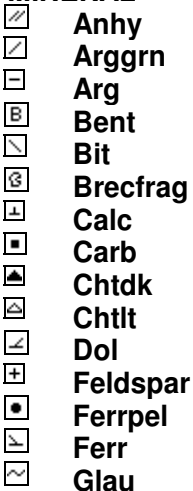
Mud Co.- Baroid/Haliburton, Dave Howell, Chase Putnam

## ROCK TYPES

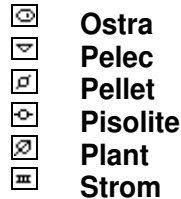
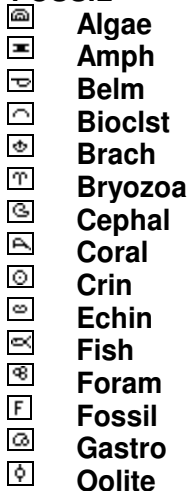


## ACCESSORIES

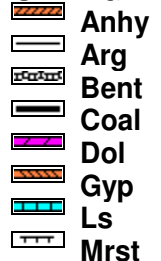
### MINERAL



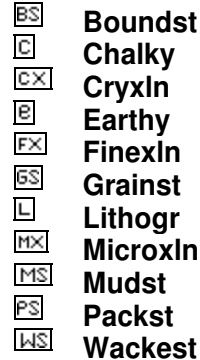
### FOSSIL



### STRINGER



### TEXTURE



## OTHER SYMBOLS

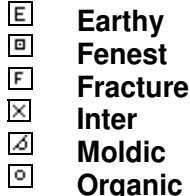
### INTERVALS



### EVENTS



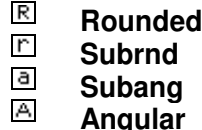
### POROSITY TYPE



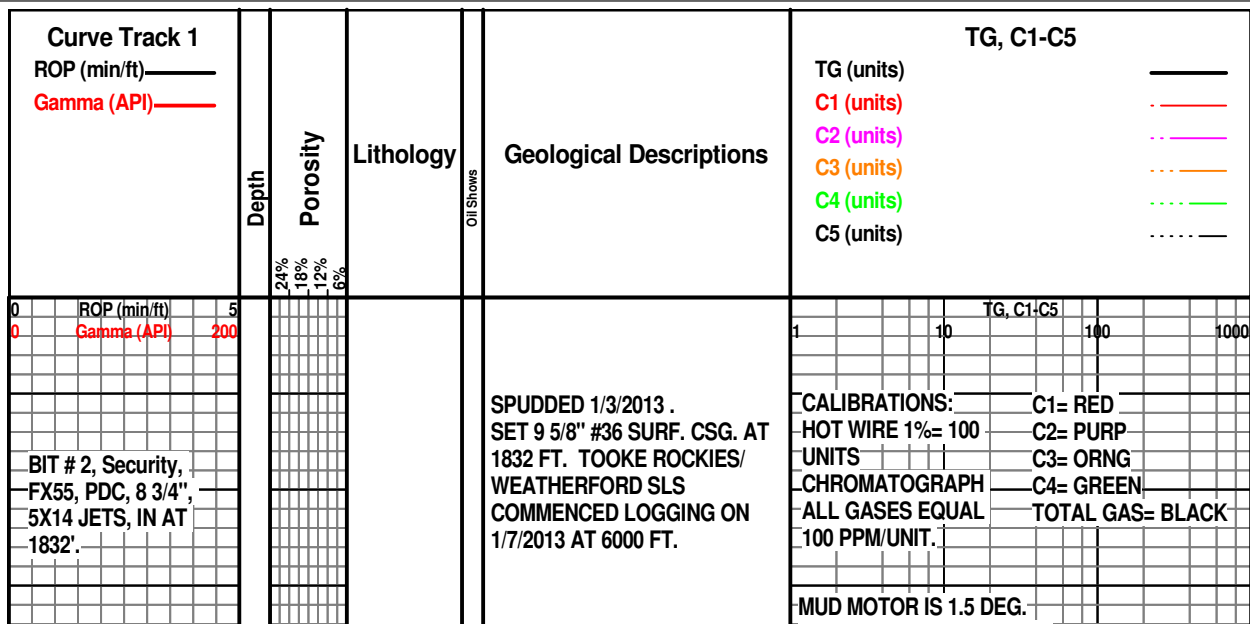
### SORTING

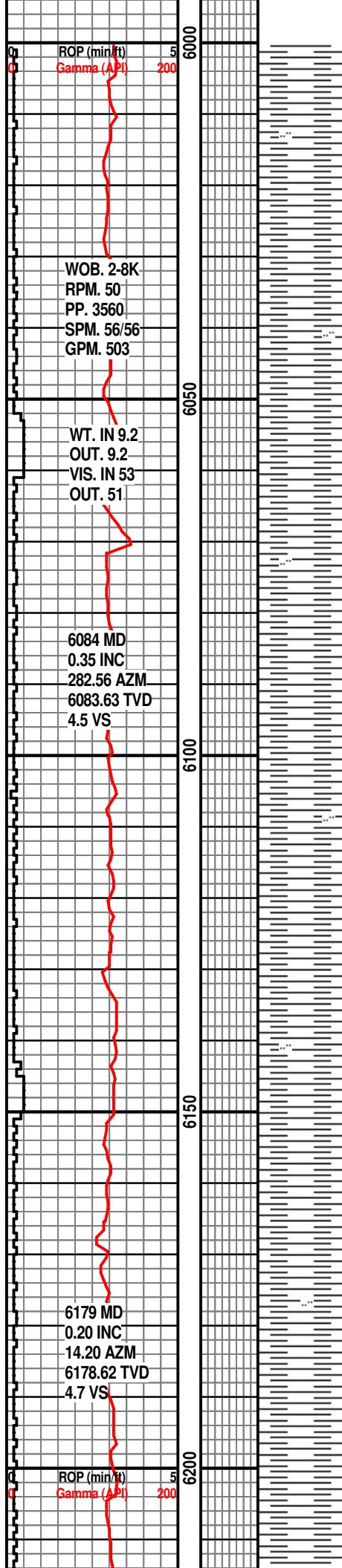


### ROUNDING



### OIL SHOWS





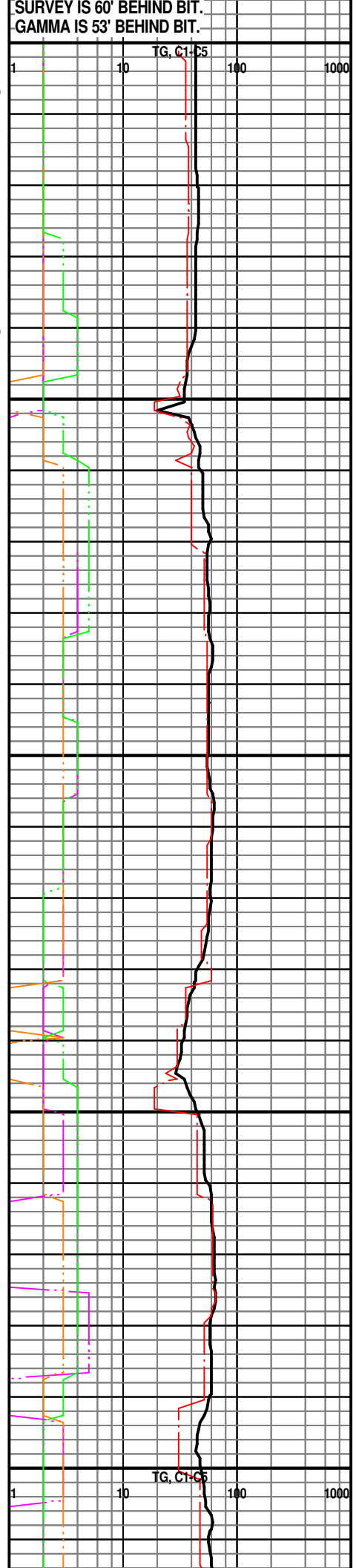
SH- GY, SME LT GY,  
BLKY-PLTY, SBWXY, SL CALC,  
OCC SLTY, SFT-FRM.

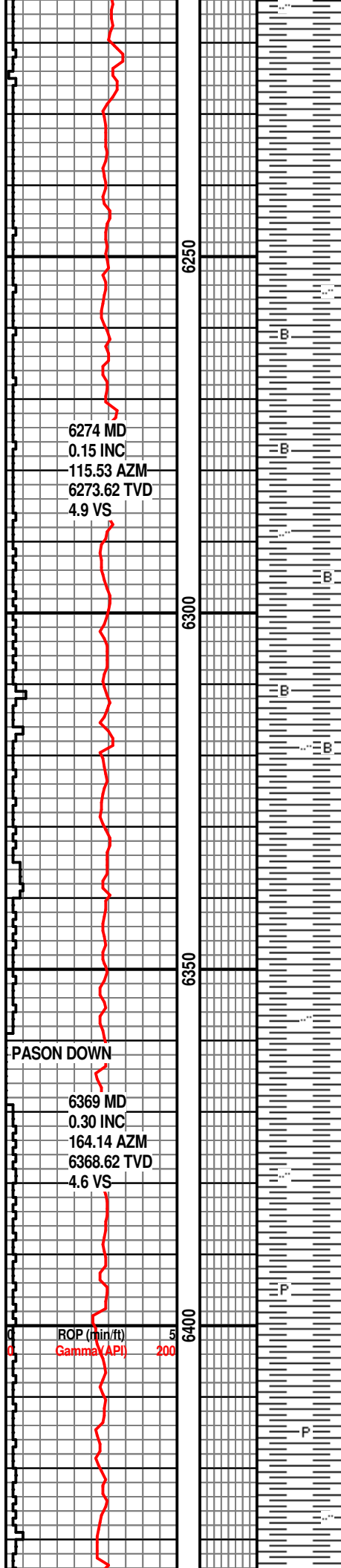
SH- GY, SME LT GY,  
BLKY-PLTY, SBWXY, SL CALC,  
OCC SLTY, SFT-FRM.

SH- LT GY-GY, OCC DK GY,  
BLKY-PLTY, SBWXY, OCC  
SLTY, SL CALC, SFT-FRM.

SH- LT GY-GY, OCC DK GY,  
BLKY-PLTY, SBWXY, OCC  
SLTY, SL CALC, SFT-FRM.

SH- LT GY-GY, OCC DK GY,  
BLKY-PLTY, SBWXY, OCC  
SLTY, SL CALC, SFT-FRM.



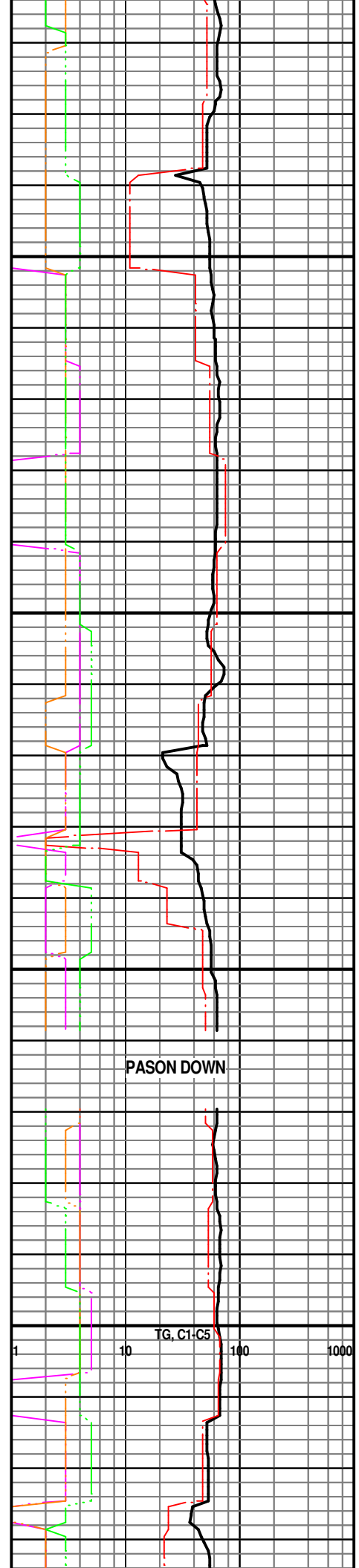


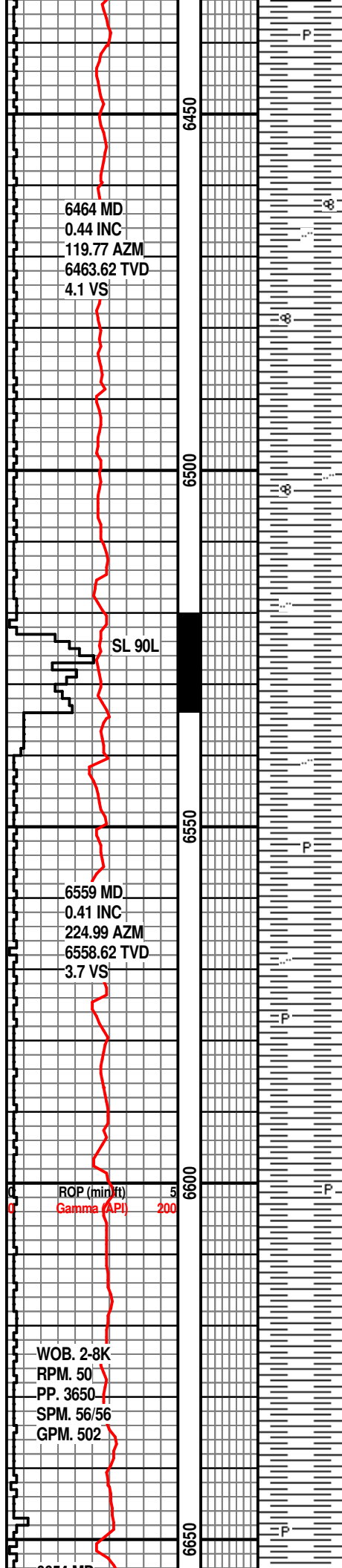
SH- GY, OCC LT GY,  
BLKY-PLTY, SBWXY, SLTY IN  
PT, SL CALC, SFT-FRM.

SH- GY, OCC DK GY, LT GY,  
BLKY-PLTY, SBWXY, OCC  
SLTY, TR BENT, SL CALC,  
SFT-FRM.

SH- GY, OCC DK GY, LT GY,  
BLKY-PLTY, SBWXY, OCC  
SLTY, TR BENT, SL CALC,  
SFT-FRM.

SH- GY, OCC DK GY, LT GY,  
BLKY-PLTY, SBWXY, OCC  
SLTY, TR PYR, SL CALC,  
SFT-FRM.





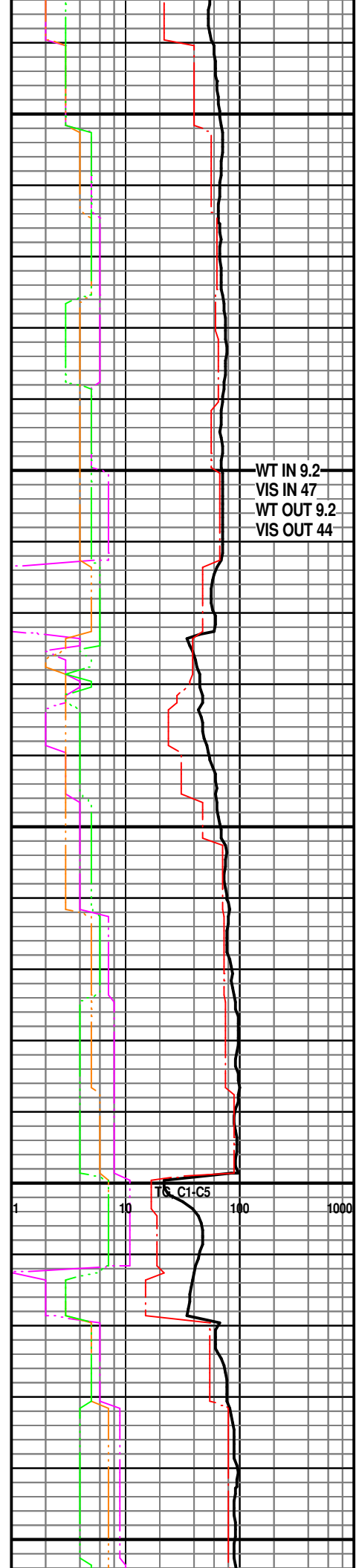
SH- GY, OCC DK GY, LT GY,  
BLKY-PLTY, SBWXY, OCC  
SLTY, TR PYR, SL CALC,  
SFT-FRM.

SH- GY-LT GY, OCC DK GY,  
BLKY-PLTY, SBWXY, OCC  
SLTY, TR  
COCCOLITHOPHORES,  
SL-NON CALC, SFT-FRM.

SH- GY, OCC DK GY, LT GY,  
BLKY-PLTY, SBWXY, OCC  
SLTY, TR PYR, SL CALC,  
SFT-FRM.

SH- GY, OCC DK GY, LT GY,  
BLKY-PLTY, SBWXY, OCC  
SLTY, TR PYR, SL CALC,  
SFT-FRM.

SH- GY, OCC DK GY, LT GY,



6844 MD  
0.29 INC  
230.19 AZM  
-6843.61 TVD  
2.3 VS

BLKY-PLTY, SBWXY, OCC  
SLTY, TR PYR, SL CALC,  
SFT-FRM.

SH- GY-DK GY, OCC DK BRN,  
BLKY-PLTY, SBWXY, OCC  
SLTY, TR  
COCCOLITHOPHORES, SL  
CALC, SFT-FRM.

SH- GY, OCC LT GY,  
BLKY-PLTY, SBWXY, SLTY IN  
PT, SL CALC, SFT-FRM.

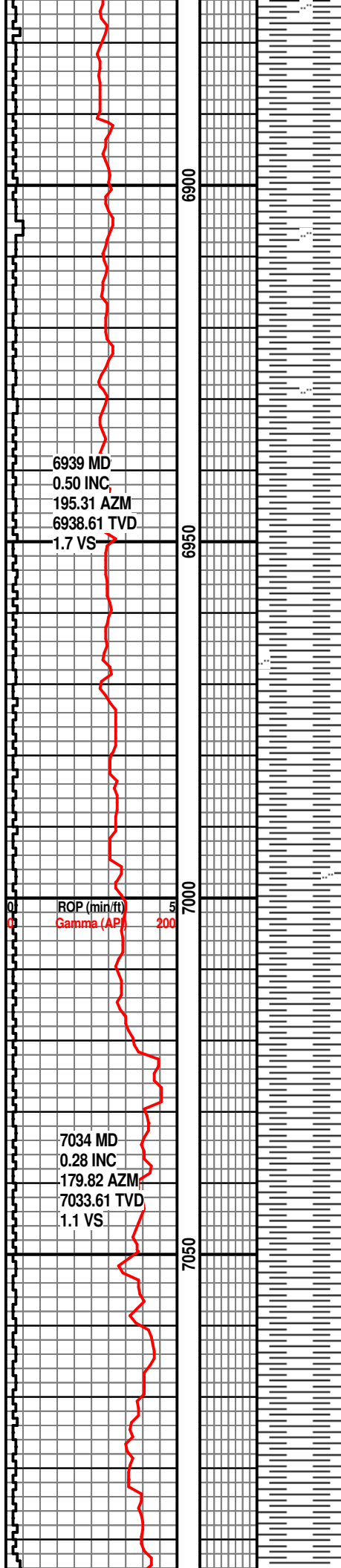
SH- GY- LT GY, SME DK BRN,  
BLKY-PLTY, OCC SLTY, SL  
CALC, SFT-FRM.

SH- GY- LT GY, SME DK BRN,  
BLKY-PLTY, OCC SLTY, SL  
CALC, SFT-FRM.

SH- GY- LT GY, SME DK BRN,  
BLKY-PLTY, OCC SLTY, SL  
CALC, SFT-FRM.

WT IN 9.2	
VIS IN 44	
WT OUT 9.2	
VIS OUT 44	

TG, C1-C5



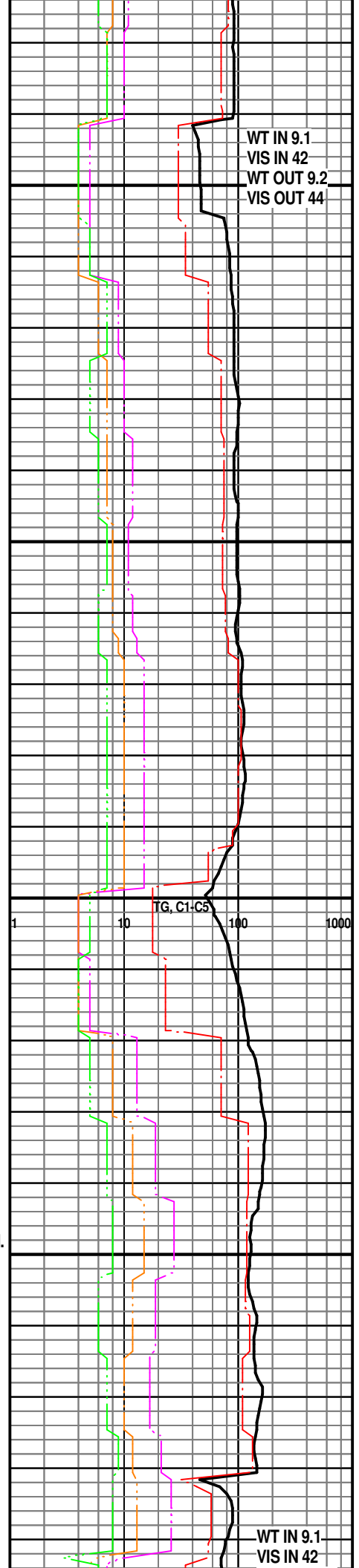
SH- GY, DK GY, SME DK BRN,  
BLKY-PLTY, OCC SLTY, SL  
CALC, SFT-FRM.

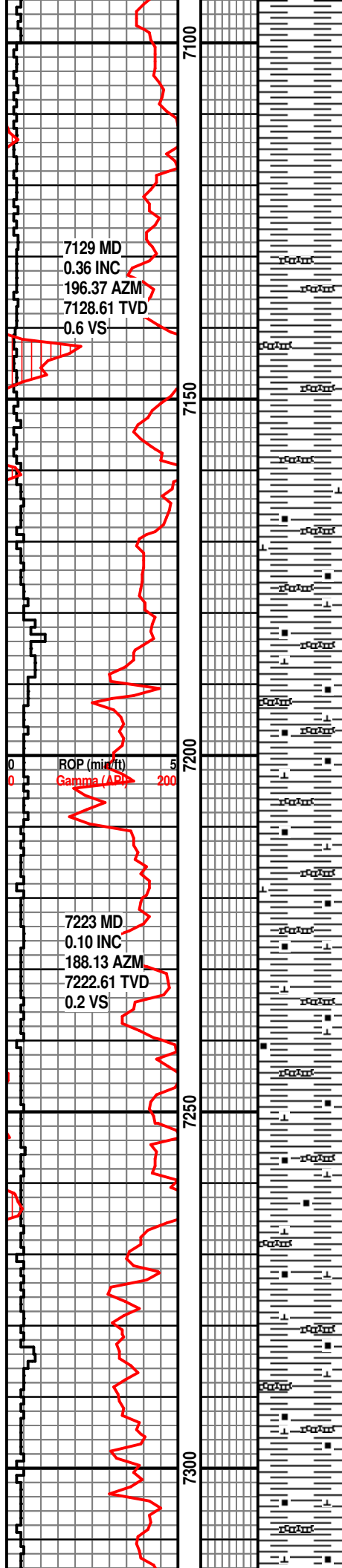
SH- GY, DK GY, SME DK BRN,  
BLKY-PLTY, OCC SLTY, SL  
CALC, SFT-FRM.

SH- GY, DK GY, SME DK BRN,  
BLKY-PLTY, OCC SLTY, SL  
CALC, SFT-FRM.

SH- GY, DK GY, BLKY-PLTY,  
OCC SLTY, SL CALC, SFT-FRM.

SH- DK GY, GY, BLKY-PI TY





SH- DK GY, GY, BLKY-PLTY,  
OCC SLTY, SL CALC, SFT-FRM.

**SAMPLE TOP  
SHARON SPRINGS  
7129**

SH- DK GY, GY, BLKY-PLTY,  
OCC SLTY, SL CALC, SFT-FRM,  
TR BENT

**SAMPLE TOP  
NIOBRARA 7163**

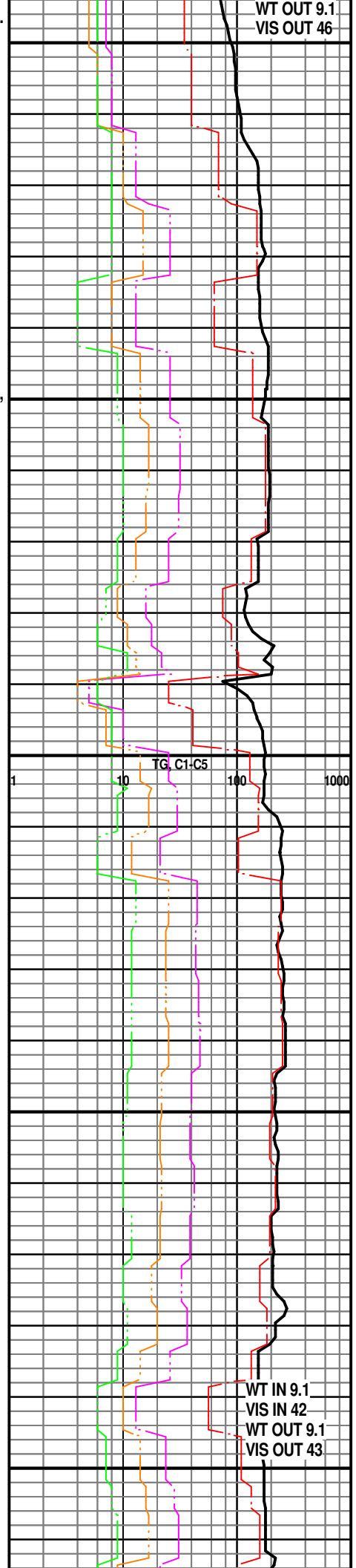
SH- DK GY, GY, BLKY-PLTY,  
CARB, V CALC, SFT-FRM, TR  
BENT

SH- DK GY, GY, BLKY-PLTY,  
CARB, V CALC, SFT-FRM, TR  
BENT

SH- DK GY, GY, BLKY-PLTY,  
CARB, V CALC, SFT-FRM, TR  
BENT

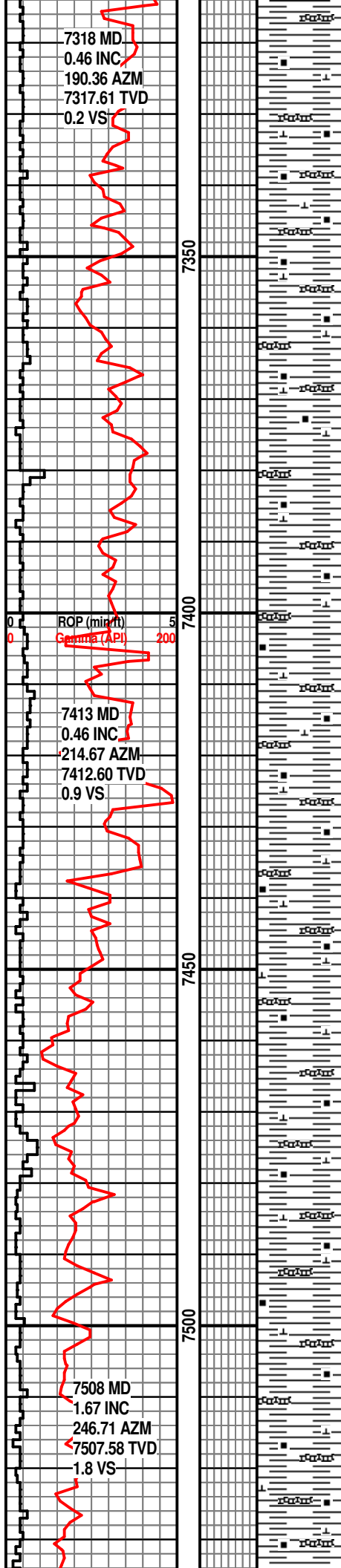
SH- DK GY, GY, BLKY-PLTY,  
CARB, V CALC, SFT-FRM, TR  
BENT

WT OUT 9.1  
VIS OUT 46



WT IN 9.1  
VIS IN 42  
WT OUT 9.1  
VIS OUT 43





SH- DK GY, GY, BLKY-PLTY,  
CARB, V CALC, SFT-FRM, TR  
BENT & CALC.

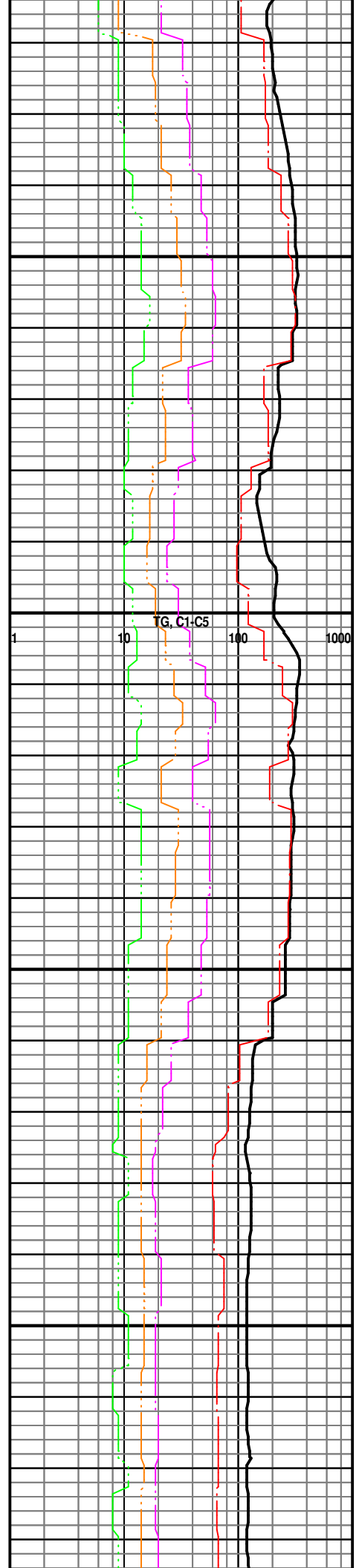
SH- DK GY, GY, BLKY-PLTY,  
CARB, CARB LAM, V CALC,  
SFT-FRM, TR BENT & CALC.

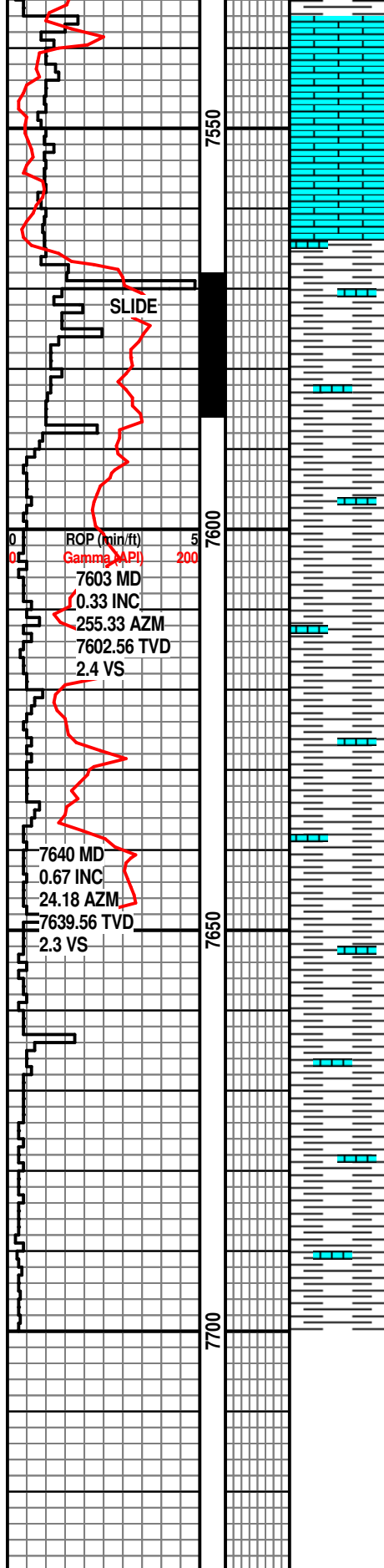
SH- DK GY, GY, BLKY-PLTY,  
CARB, CARB LAM, V CALC,  
SFT-FRM, TR BENT & CALC.

SH- DK GY, GY, BLKY-PLTY,  
CARB, CARB LAM, V CALC,  
SFT-FRM, TR BENT & CALC.

SH- DK GY, GY, BLKY-PLTY,  
CARB, CARB LAM, V CALC,  
SFT-FRM, TR BENT & CALC.

SAMPLE TOP FORT  
HAYS 7526





HAYS 7536

LS- LT GY, BF, MICXLN- FXLN,  
HD, DNS.

**SAMPLE TOP  
CARLISLE 7566**

1/8/13

SH- DK GY, GY, BLKY-PLTY,  
CARB, SL CALC, SFT-FRM, TR  
LS.

**SAMPLE TOP OF  
GREENHORN 7618**

SH- DK GY, GY, BLKY-PLTY,  
CARB, CALC, SFT-FRM, TR LS.

SH- DK GY, GY, BLKY-PLTY,  
CARB, CALC, SFT-FRM, TR LS.

SH- DK GY, GY, BLKY-PLTY,  
CARB, CALC, SFT-FRM, TR LS.

**TD AT 7700 ON  
1/8/2013 AT 0130  
DRILLERS DEPTH**

WT IN 9.2  
VIS IN 42  
WT OUT 9.1  
VIS OUT 43

TG, C1-C5

WT IN 9.1  
VIS IN 42  
WT OUT 9.1  
VIS OUT 42