

Schlumberger

Company: **Conoco Phillips Company**

Well: **State of Colorado 36-1P**

Field: **Wildcat**

County: **Adams**

State: **Colorado**

Schlumberger

Company: **Conoco Phillips Company**

Well: **State of Colorado 36-1P**

Field: **Wildcat**

County: **Adams**

State: **Colorado**

Schlumberger

Company: **Conoco Phillips Company**

Well: **State of Colorado 36-1P**

Field: **Wildcat**

County: **Adams**

State: **Colorado**

Schlumberger

Company: **Conoco Phillips Company**

Well: **State of Colorado 36-1P**

Field: **Wildcat**

County: **Adams**

State: **Colorado**

Schlumberger

Company: **Conoco Phillips Company**

Well: **State of Colorado 36-1P**

Field: **Wildcat**

County: **Adams**

State: **Colorado**

[illegible]

Logging Date					
Run Number					
Depth Driller					
Schlumberger Depth					
Bottom Log Interval					
Top Log Interval					
Casing Driller Size @ Depth		@			
Casing Schlumberger					
Bit Size					
Type Fluid In Hole					
Density		Viscosity			
Fluid Loss		PH			
Source Of Sample					
RM @ Measured Temperature		@			
RMF @ Measured Temperature		@			
RMC @ Measured Temperature		@			
Source RMF		RMF			
RM @ MRT		RMF @ MRT	@		@
Maximum Recorded Temperatures					
Circulation Stopped		Time			
Logger On Bottom		Time			
Unit Number		Location			
Recorded By					
Witnessed By					

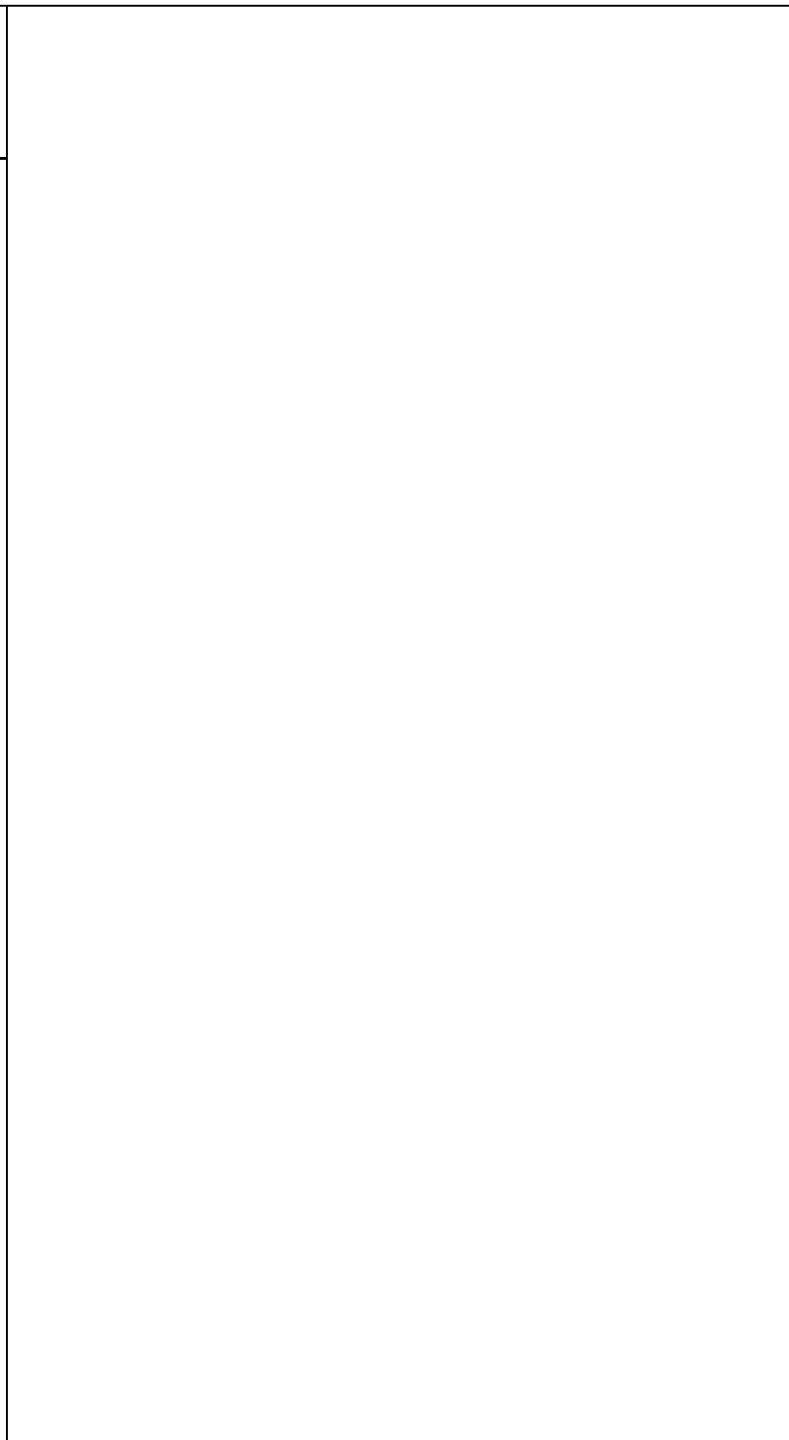
Rig: H&P 280	
Crew: Ian Derry, Alonzo Carrera	

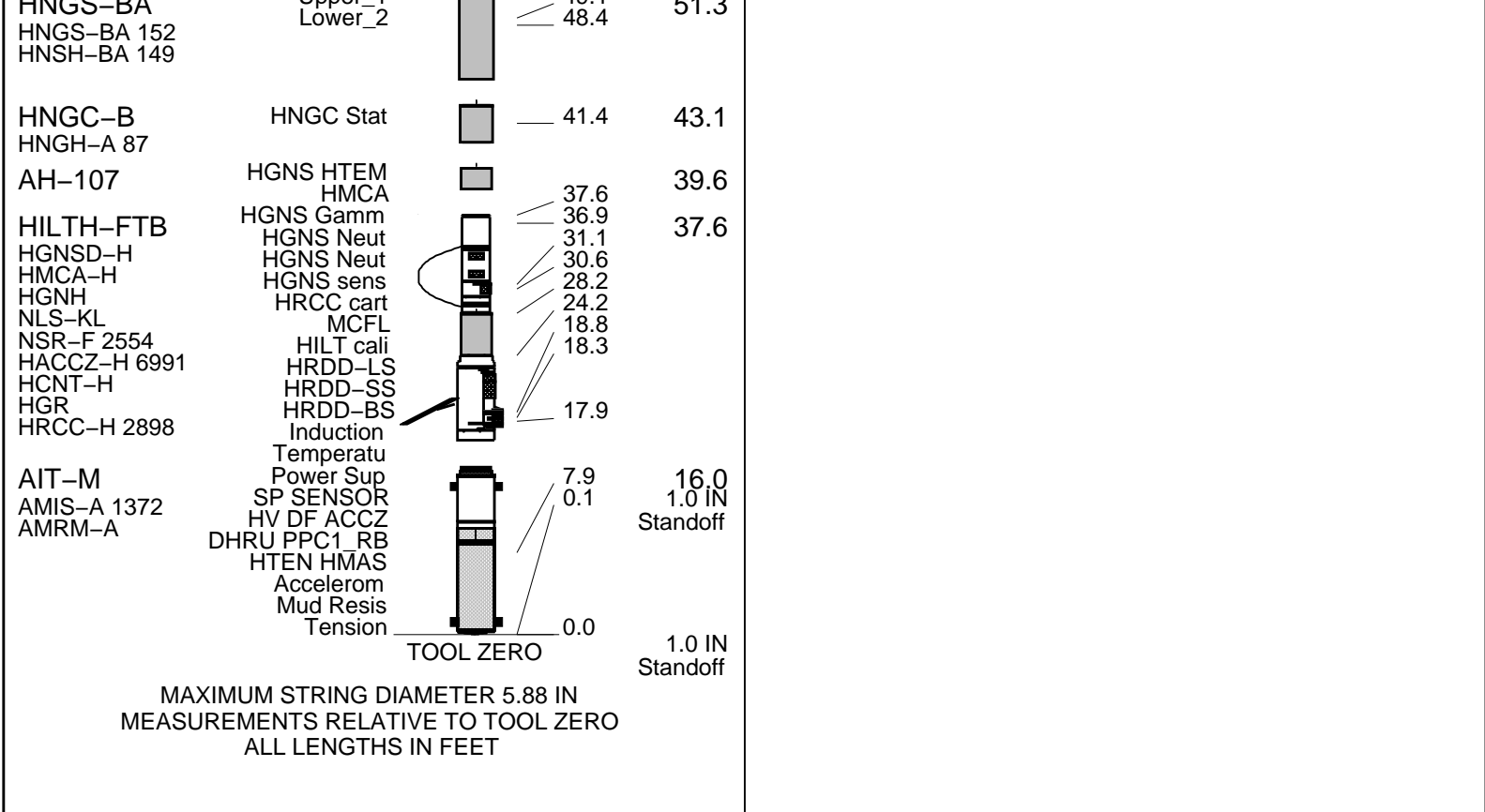
RUN 1			RUN 2		
SERVICE ORDER #:		BHDJ-00199	SERVICE ORDER #:		
PROGRAM VERSION:		19C1-222	PROGRAM VERSION:		
FLUID LEVEL:			FLUID LEVEL:		
LOGGED INTERVAL	START	STOP	LOGGED INTERVAL	START	STOP

EQUIPMENT DESCRIPTION					
RUN 1			RUN 2		

SURFACE EQUIPMENT	
GSR-U/Y NCT-B CNB-AB NCS-VB	GSR-U 599 WITM (EDTS)-A

DOWNHOLE EQUIPMENT	
LEH-QT	MDSB_EDTC Mud Tempe
EDTC-B	CTEM
EDTH-B	Gamma Ray
EDTC-B	EFTB DIAG
	TelStatus
	EDTCB Ele
MAPC-B	
MAPC-BA	
ECH-SF	
MAMS-BA	
	MAMS-PS
MAXS-B	
MASS-BA	
MAXS-BA	
	MAXS-PS
PPC1	Calipers
PPC1-B	
PPC_CAL_STD	PPC_Cartr
AH-nonmag	
AH-nonmag	
GPIT-F	
GPIH-B	
AH-nonmag	
AH-nonmag	
AH-107	
UNCS-BA	Upper 1





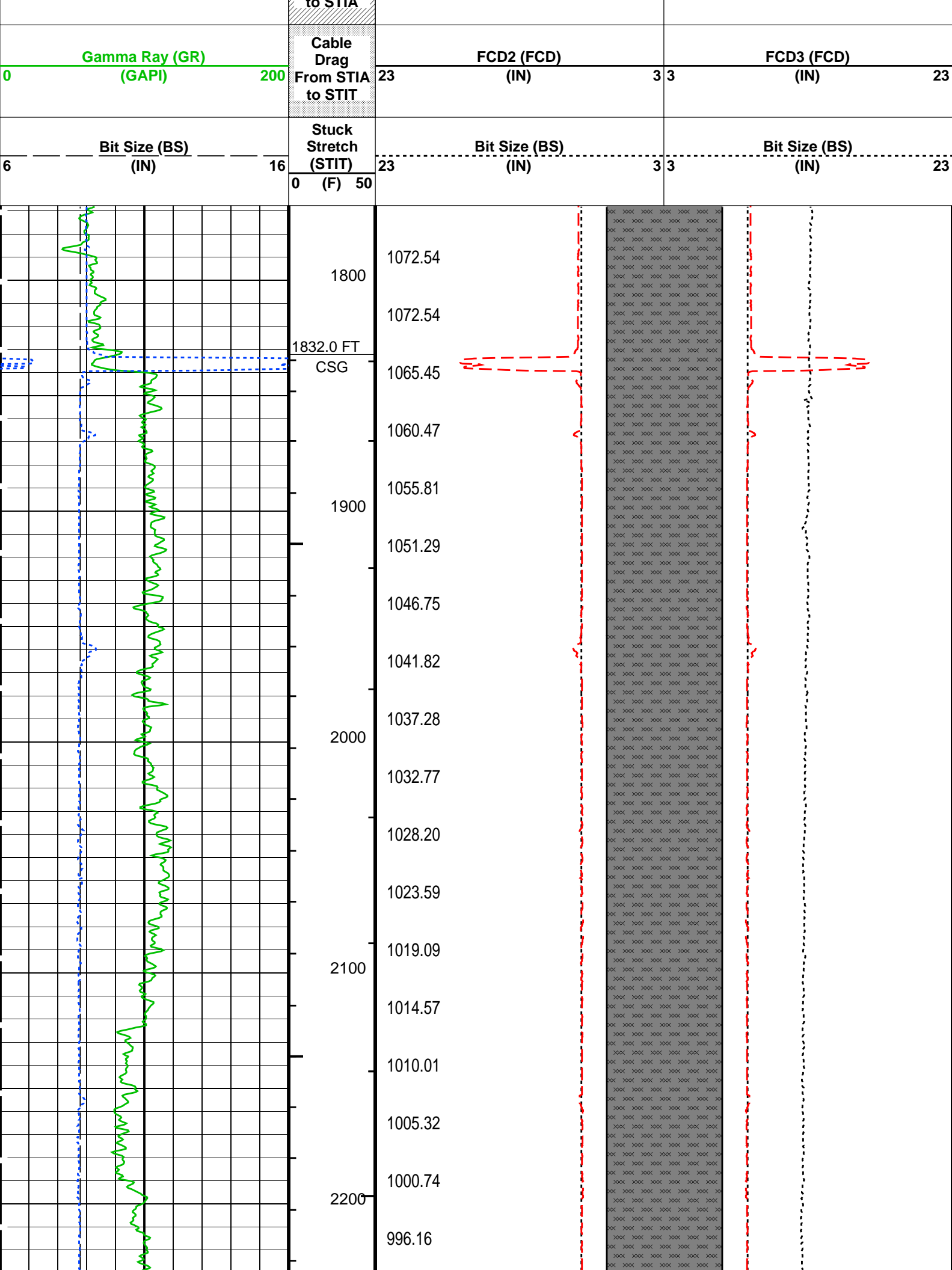
Input DLIS Files						
DEFAULT	AIT_TLD_MCFL_CNL_IS_017PUP	FN:16	PRODUCER	09-Jan-2013 03:36	7717.5 FT	1767.5 FT
Output DLIS Files						
DEFAULT	AIT_TLD_MCFL_CNL_IS_019PUP	FN:18	PRODUCER	09-Jan-2013 03:46	7717.5 FT	1767.5 FT

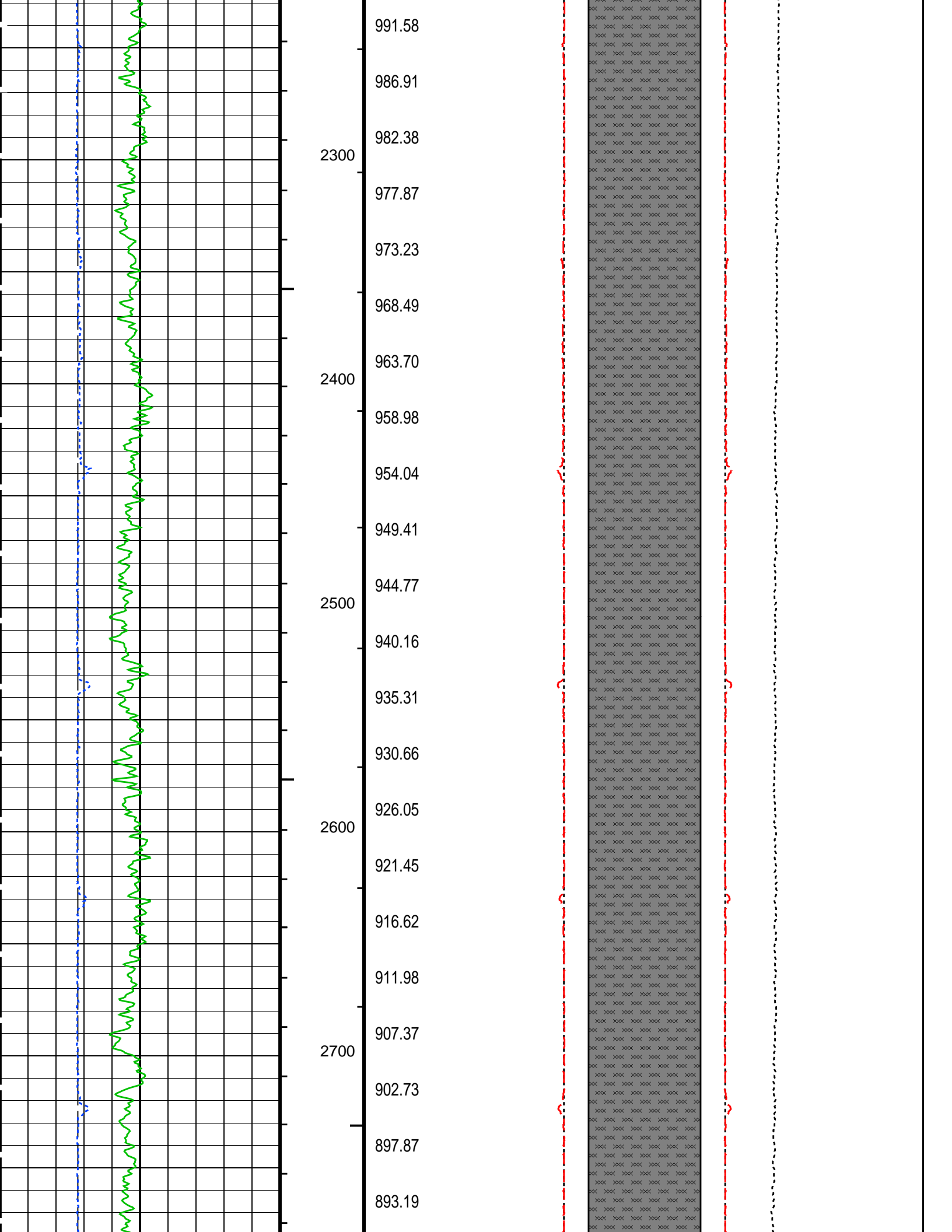
Integrated Hole/Cement Volume Summary	
Hole Volume = 302.65 F3	
Cement Volume = 102.35 F3 (assuming 7.00 IN casing O.D.)	
Computed from 7705.5 FT to 6956.5 FT using data channel(s) CRD1_PPC1 CRD2_PPC1 CRD3_PPC1 CRD4_PPC1	

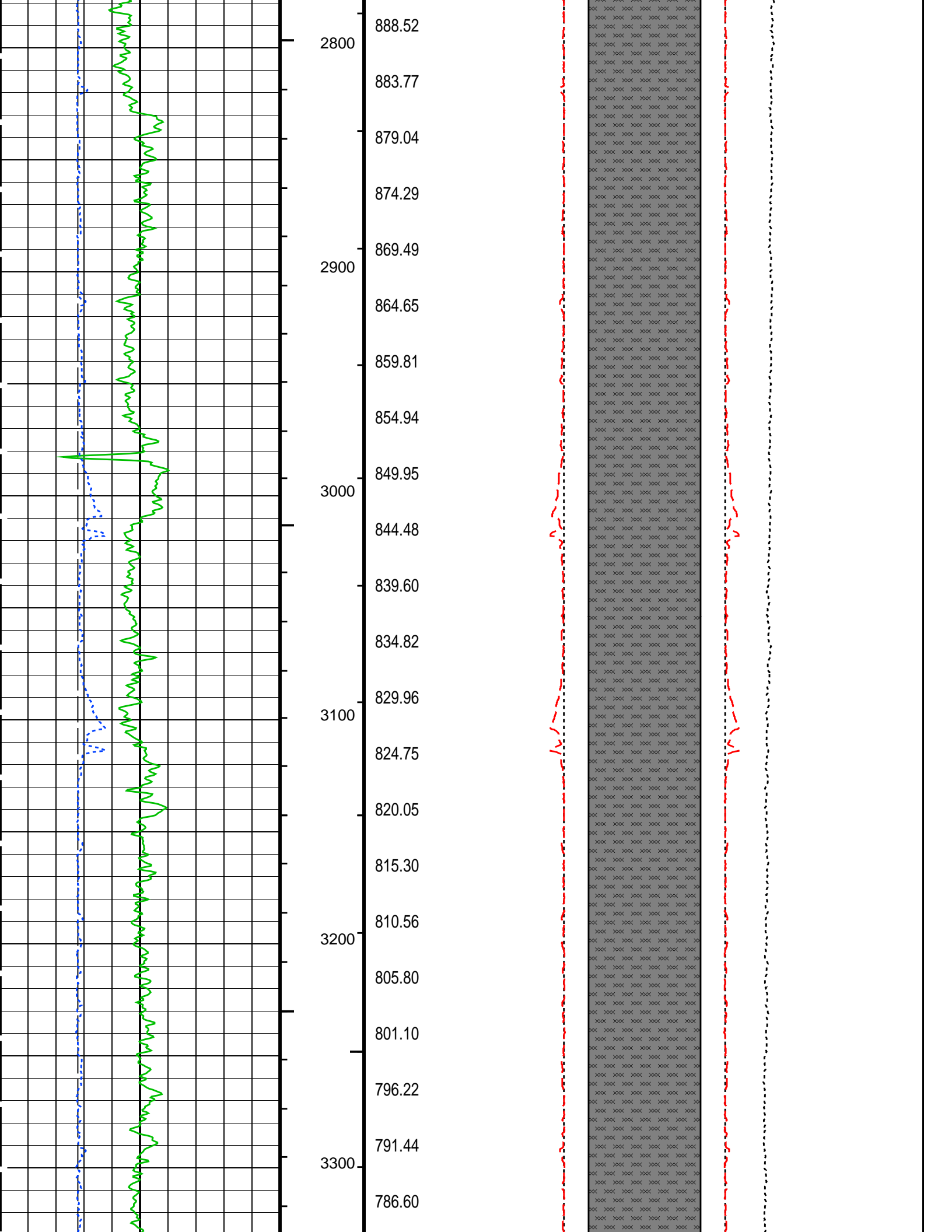
OP System Version: 19C1-222			
AIT-M	19C1-222	HILTH-FTB	19C1-222
HNGC-B	HFE-5203-OP19.1-NUCL	HNGS-BA	HFE-5203-OP19.1-NUCL
GPIT-F	19C1-222	PPC1	19C1-222
MAXS-B	19C1-222	MAPC-B	19C1-222
EDTC-B	19C1-222		

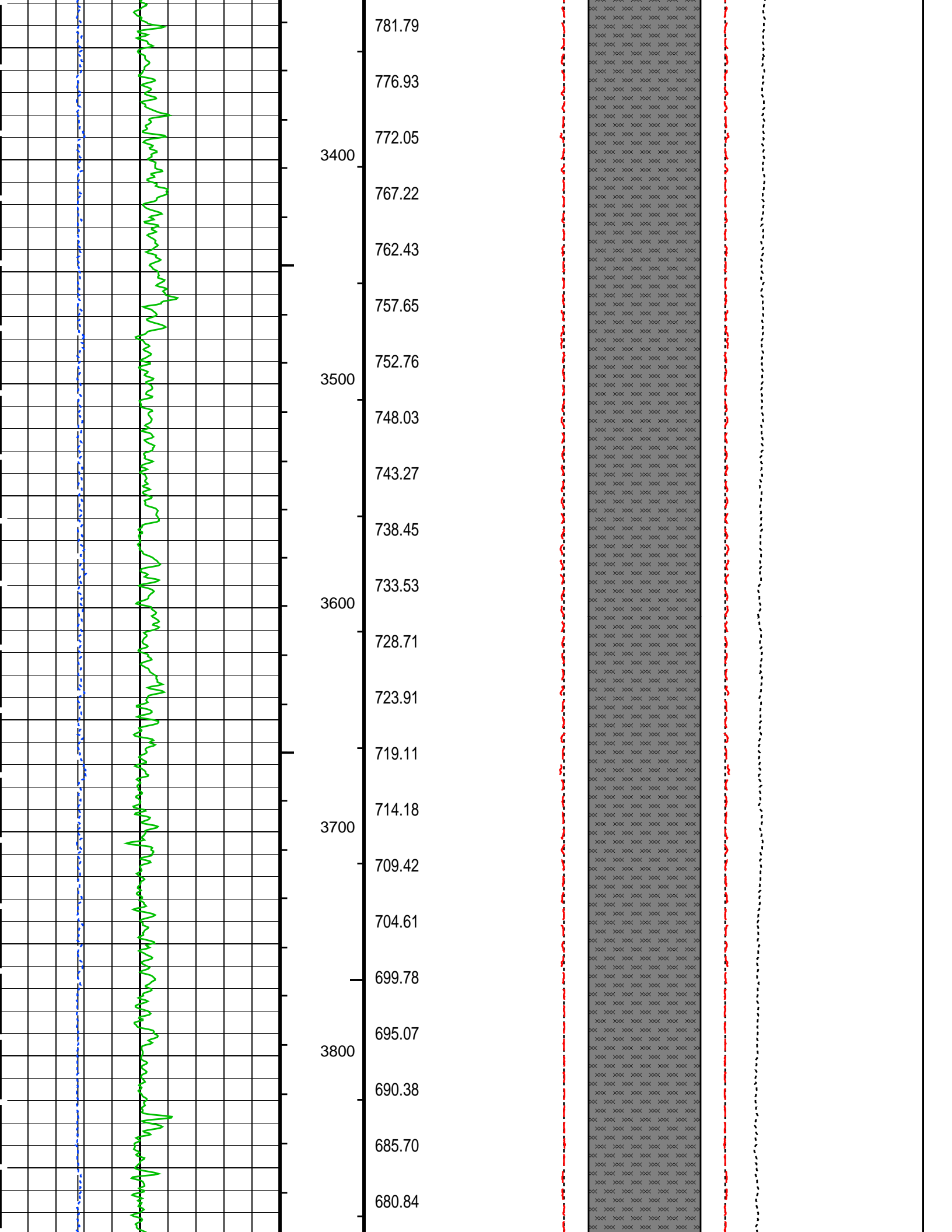
PIP SUMMARY	
└ Integrated Hole Volume Minor Pip Every 10 F3	
└ Integrated Hole Volume Major Pip Every 100 F3	
└ Integrated Cement Volume Minor Pip Every 10 F3	
└ Integrated Cement Volume Major Pip Every 100 F3	

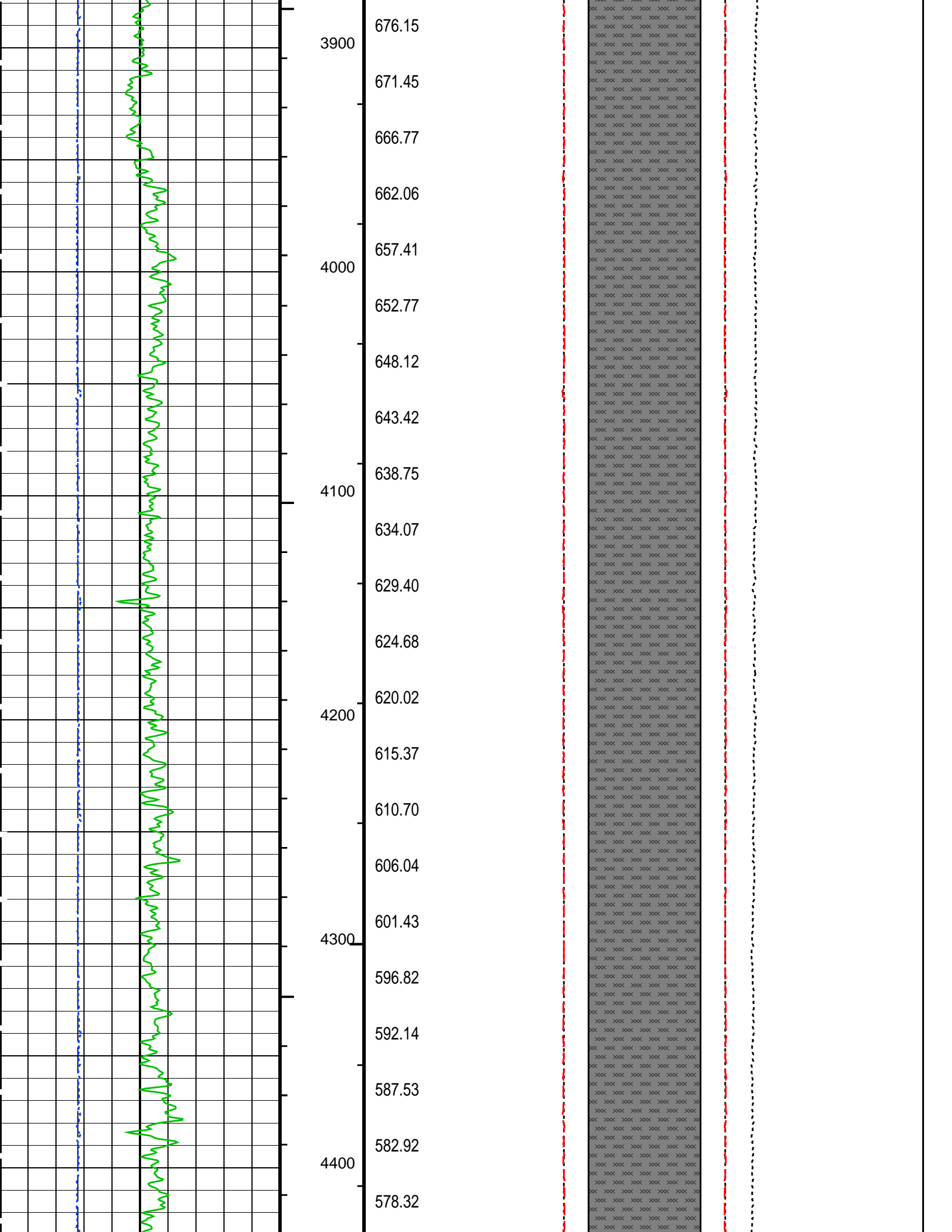
Time Mark Every 60 S	
FCD2 - FCD3 From FCD2 to FCD3	
Cement Volume (ICV) (F3)	Tension (TENS) (LBF)
6000	0
HILT Caliper (HCAL) (IN)	HILT Caliper (HCAL) (IN)
6	23

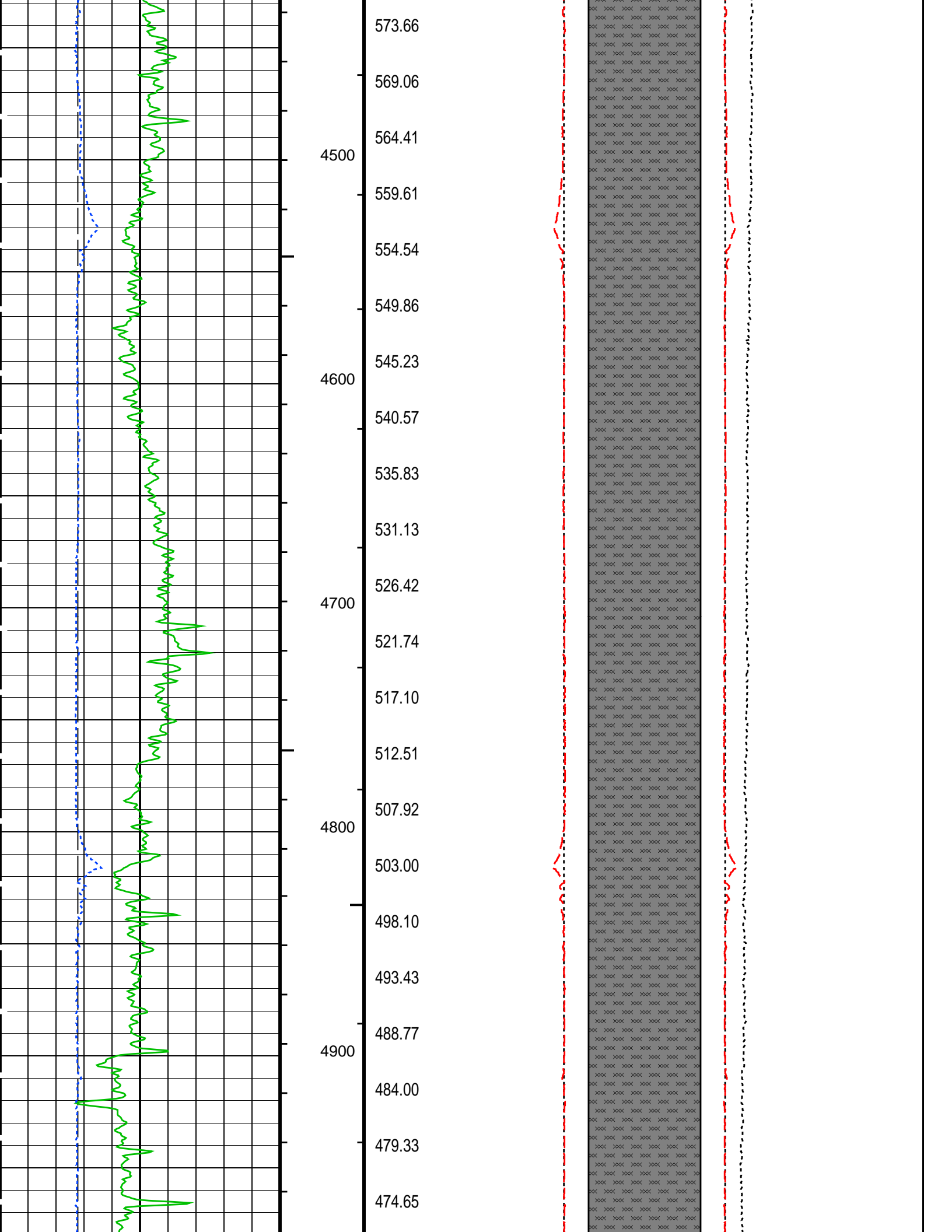


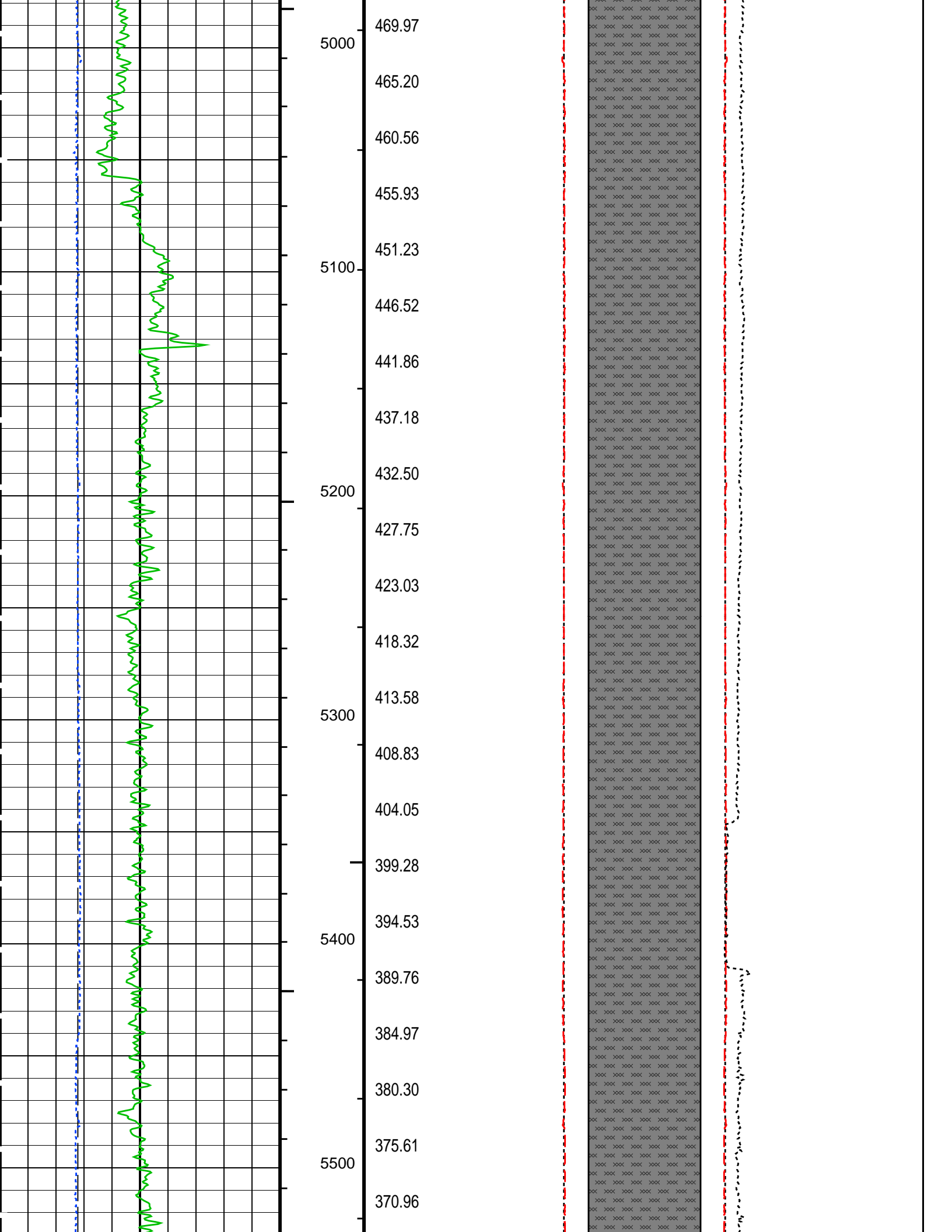


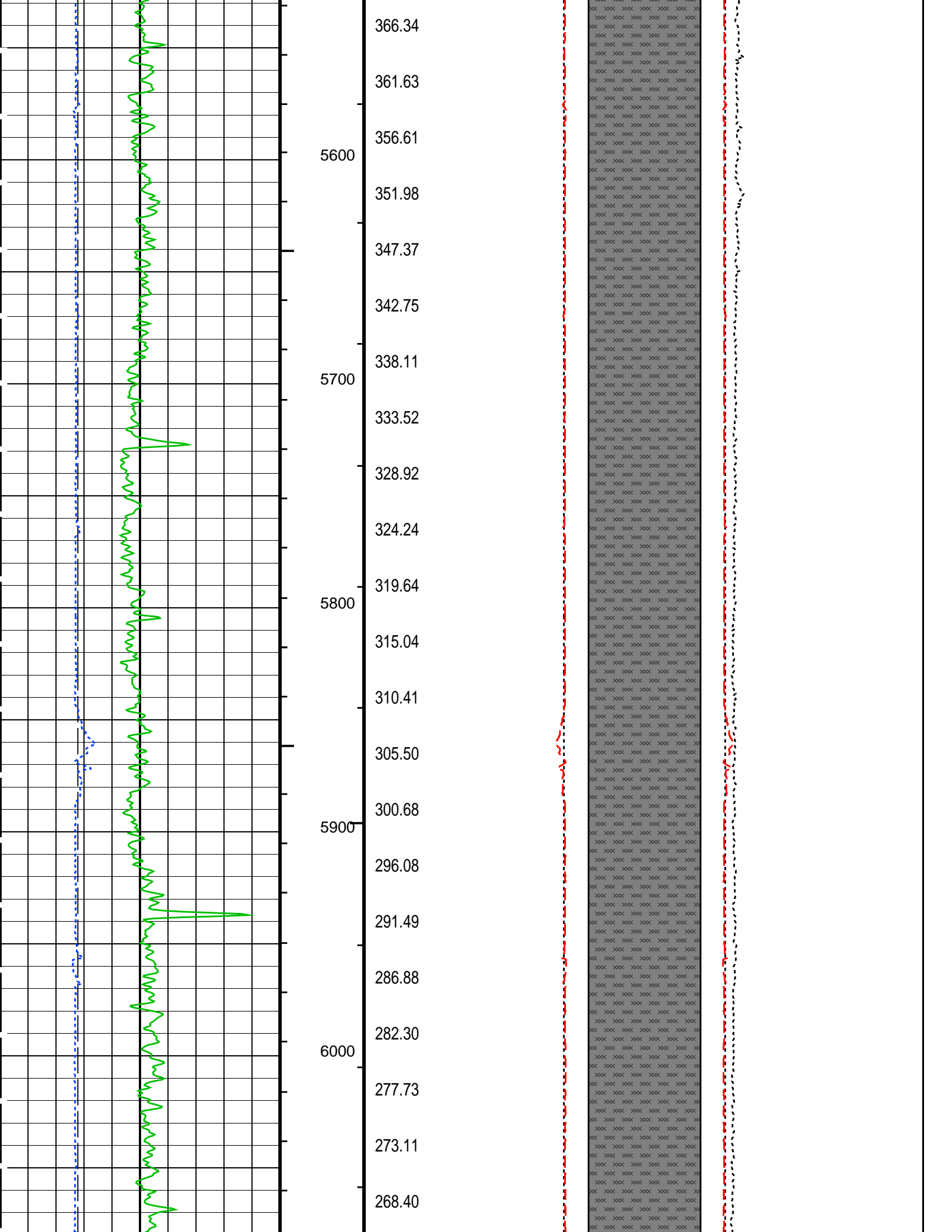


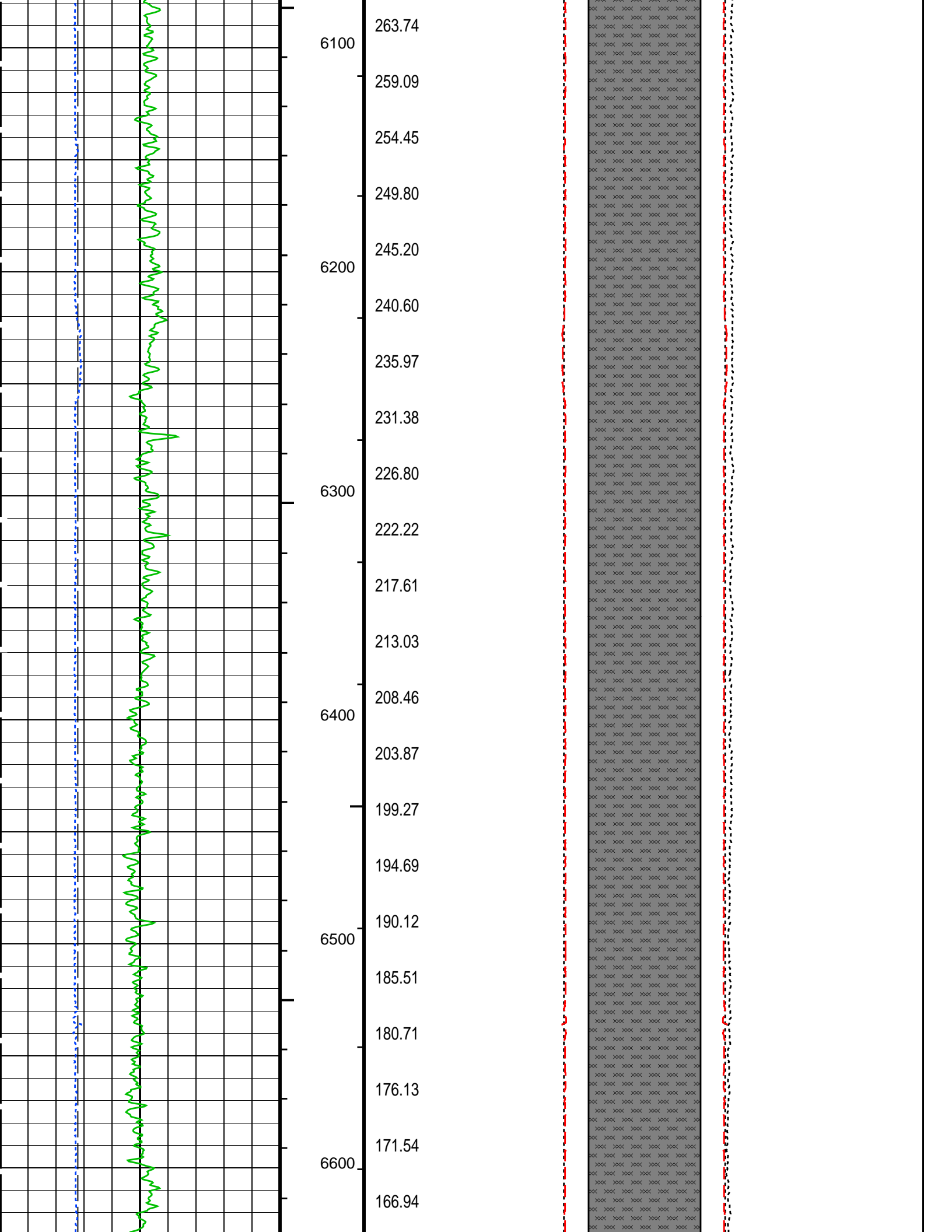


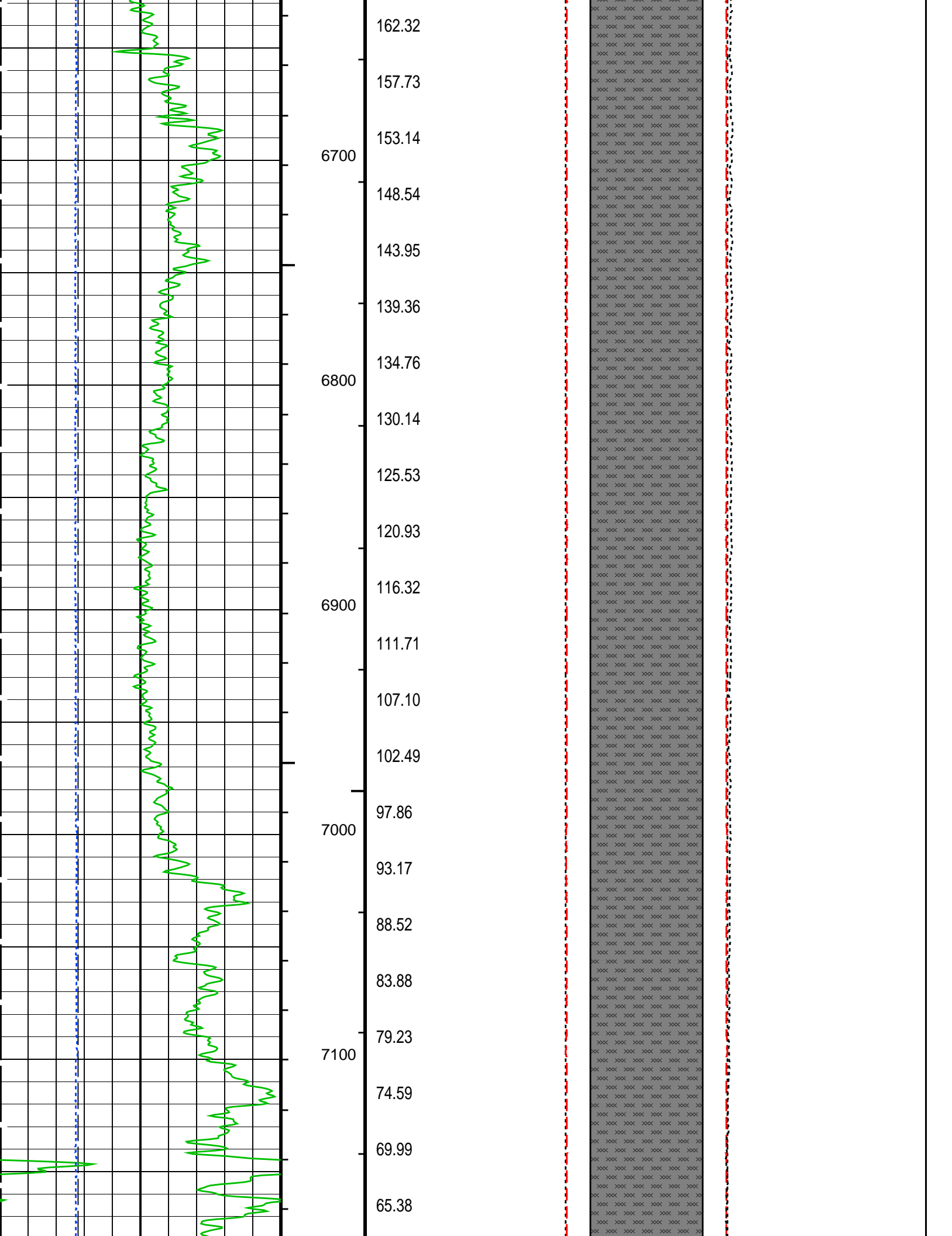


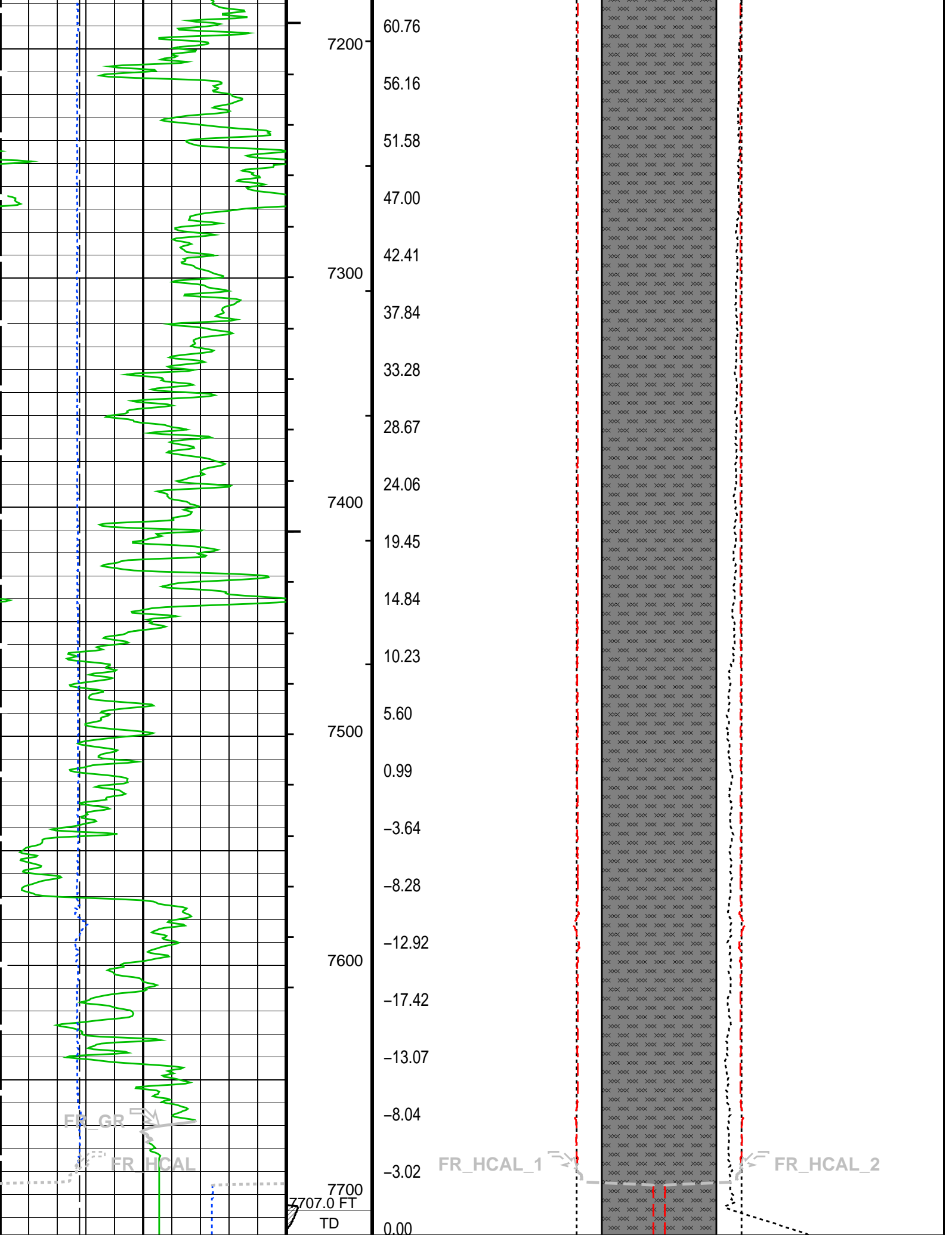












6	Bit Size (BS) (IN)	16	Stretch (STIT) 0 (F) 50	23	Bit Size (BS) (IN)	3 3	Bit Size (BS) (IN)	23
0	Gamma Ray (GR) (GAPI)	200	Cable Drag From STIA to STIT	23	FCD2 (FCD) (IN)	3 3	FCD3 (FCD) (IN)	23
6	HILT Caliper (HCAL) (IN)	16	Tool/Tot. Drag From D3T to STIA	23	HILT Caliper (HCAL) (IN)	3 3	HILT Caliper (HCAL) (IN)	23
				Cement Volume (ICV) (F3)		6000	Tension (TENS) (LBF)	0
FCD2 – FCD3 From FCD2 to FCD3								

PIP SUMMARY

- └ Integrated Hole Volume Minor Pip Every 10 F3
- └ Integrated Hole Volume Major Pip Every 100 F3
 - └ Integrated Cement Volume Minor Pip Every 10 F3
 - └ Integrated Cement Volume Major Pip Every 100 F3

Time Mark Every 60 S

Parameters

DLIS Name	Description	Value	
BS	MAPC-B: Multimode Array Sonic Power Cartridge Bit Size	8.750	IN
SPVD	DIR: Directional Survey Computation TVD of Starting Point	0	FT
TIMD	Along-hole depth of Tie-in Point	0	FT
TIVD	TVD of Tie-in Point	0	FT
FCD	HOLEV: Integrated Hole/Cement Volume Future Casing (Outer) Diameter	7	IN
HVCS	Integrated Hole Volume Caliper Selection	AUTOMATIC	
LBFR	STI: Stuck Tool Indicator Trigger for MAXIS First Reading Label	TDL	
STKT	STI Stuck Threshold	2.5	FT
TDD	Total Depth – Driller	7700.00	FT
TDL	Total Depth – Logger	7707.00	FT
DO	System and Miscellaneous Depth Offset for Playback	0.0	FT
DORL	Depth Offset for Repeat Analysis	0.0	FT
PP	Playback Processing	OFF	
TD	Total Depth	7707	FT

Format: G_DCAL_FORMAT Vertical Scale: 2" per 100' Graphics File Created: 09-Jan-2013 03:46

OP System Version: 19C1-222

AIT-M	19C1-222	HILTH-FTB	19C1-222
HNGC-B	HFE-5203-OP19.1-NUCL	HNGS-BA	HFE-5203-OP19.1-NUCL
GPIT-F	19C1-222	PPC1	19C1-222
MAXS-B	19C1-222	MAPC-B	19C1-222
EDTC-B	19C1-222		

Input DLIS Files

DEFAULT	AIT_TLD_MCFL_CNL_IS_017PUP	FN:16	PRODUCER	09-Jan-2013 03:36	7717.5 FT	1767.5 FT
---------	----------------------------	-------	----------	-------------------	-----------	-----------

Output DLIS Files

DEFAULT	AIT_TLD_MCFL_CNL_IS_019PUP	FN:18	PRODUCER	09-Jan-2013 03:46
---------	----------------------------	-------	----------	-------------------

Company: **Conoco Phillips Company**

Schlumberger

Well: **State of Colorado 36-1B**

Well: State of Colorado 36-1P
Field: Wildcat
County: Adams
State: Colorado

Platform Express
Cement Volume