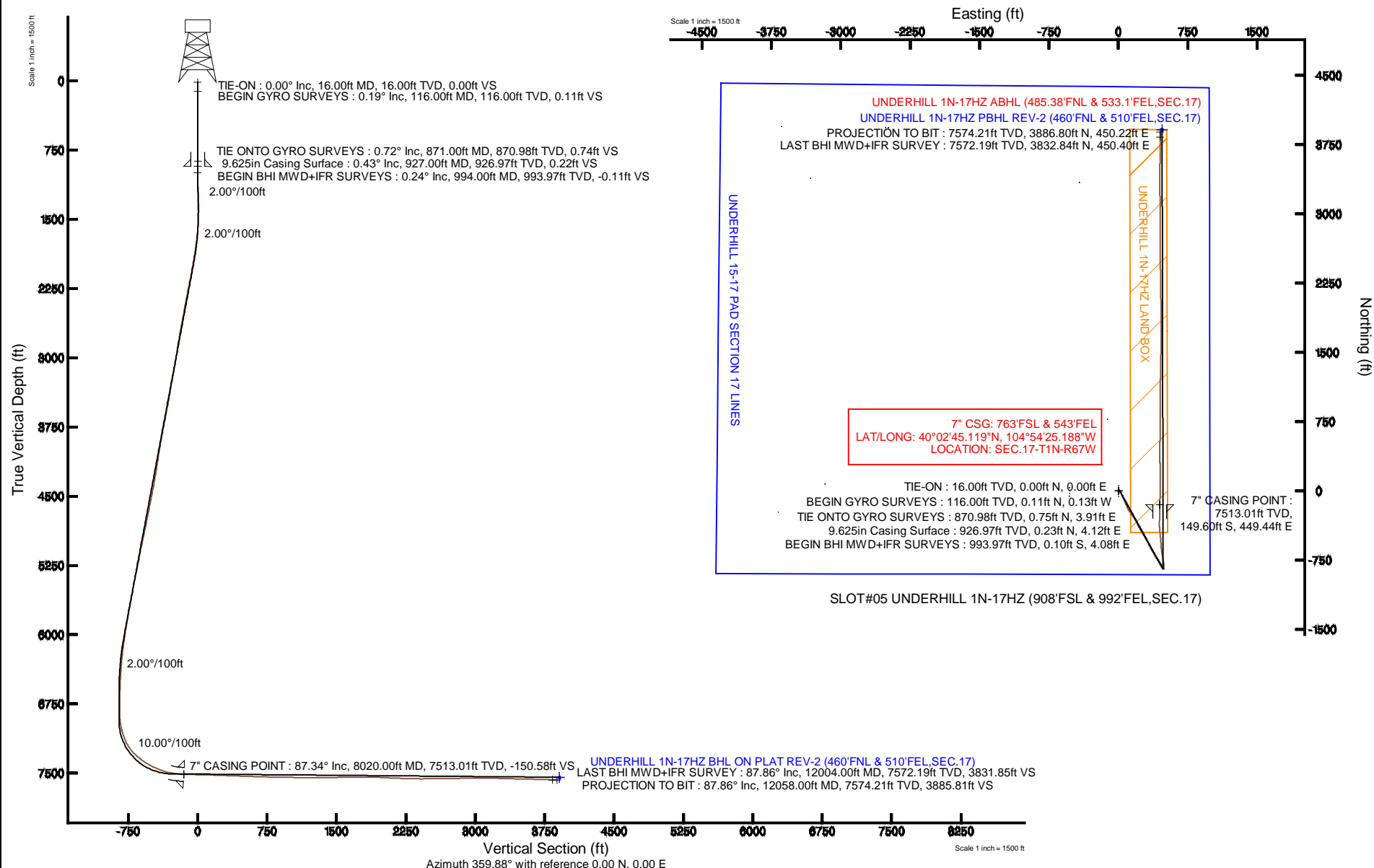


KERR-MCGEE OIL & GAS ONSHORE LP

Location: COLORADO Slot: SLOT#05 UNDERHILL 1N-17HZ (908'FSL & 992'FEL,SEC.17)
 Field: WELD COUNTY (KERR MCGEE) Well: UNDERHILL 1N-17HZ
 Facility: SEC.17-T1N-R67W Wellbore: UNDERHILL 1N-17HZ PWB

Plot reference wellpath is UNDERHILL 1N-17HZ (REV-A.0) PWP

True vertical depths are referenced to XTREME 24 (16KB) (RKB)	Grid System: NAD83 / Lambert Colorado SP, Northern Zone (501), US feet
Measured depths are referenced to XTREME 24 (16KB) (RKB)	North Reference: True north
XTREME 24 (16KB) (RKB) to Mean Sea Level: 5119 feet	Scale: True distance
Mean Sea Level to Mud line (At Slot: SLOT#05 UNDERHILL 1N-17HZ (908'FSL & 992'FEL,SEC.17)): 0 feet	Depths are in feet
Coordinates are in feet referenced to Slot	Created by: robale01 on 11/Sep/2013





Actual Wellpath Report

UNDERHILL 1N-17HZ AWP

Page 1 of 6



REFERENCE WELLPATH IDENTIFICATION

Operator	KERR-MCGEE OIL & GAS ONSHORE LP	Slot	SLOT#05 UNDERHILL 1N-17HZ (908'FSL & 992'FEL,SEC.17)
Area	COLORADO	Well	UNDERHILL 1N-17HZ
Field	WELD COUNTY (KERR MCGEE)	Wellbore	UNDERHILL 1N-17HZ AWB
Facility	SEC.17-T1N-R67W		

REPORT SETUP INFORMATION

Projection System	NAD83 / Lambert Colorado SP, Northern Zone (501), US feet	Software System	WellArchitect® 4.0.0
North Reference	True	User	Robiale01
Scale	0.999963	Report Generated	11/Sep/2013 at 15:56
Convergence at slot	n/a	Database/Source file	WA_ANADARKO/UNDERHILL_1N-17HZ_AWB.xml

WELLPATH LOCATION

	Local coordinates		Grid coordinates		Geographic coordinates	
	North[ft]	East[ft]	Easting[US ft]	Northing[US ft]	Latitude	Longitude
Slot Location	-1743.86	1667.50	3165568.63	1260256.47	40°02'46.597"N	104°54'30.967"W
Facility Reference Pt			3163889.72	1261989.21	40°03'03.831"N	104°54'52.408"W
Field Reference Pt			3197771.84	1268891.29	40°04'09.600"N	104°47'36.000"W

WELLPATH DATUM

Calculation method	Minimum curvature	XTREME 24 (16'KB) (RKB) to Facility Vertical Datum	5119.00ft
Horizontal Reference Pt	Slot	XTREME 24 (16'KB) (RKB) to Mean Sea Level	5119.00ft
Vertical Reference Pt	XTREME 24 (16'KB) (RKB)	XTREME 24 (16'KB) (RKB) to Mud Line at Slot (SLOT#05 UNDERHILL 1N-17HZ (908'FSL & 992'FEL,SEC.17))	5119.00ft
MD Reference Pt	XTREME 24 (16'KB) (RKB)	Section Origin	N 0.00, E 0.00 ft
Field Vertical Reference	Mean Sea Level	Section Azimuth	6.61°



Actual Wellpath Report

UNDERHILL 1N-17HZ AWP

Page 2 of 6



REFERENCE WELLPATH IDENTIFICATION

Operator	KERR-MCGEE OIL & GAS ONSHORE LP	Slot	SLOT#05 UNDERHILL 1N-17HZ (908'FSL & 992'FEL,SEC.17)
Area	COLORADO	Well	UNDERHILL 1N-17HZ
Field	WELD COUNTY (KERR MCGEE)	Wellbore	UNDERHILL 1N-17HZ AWB
Facility	SEC.17-T1N-R67W		

WELLPATH DATA (143 stations) † = interpolated/extrapolated station

MD [ft]	Inclination [°]	Azimuth [°]	TVD [ft]	Vert Sect [ft]	North [ft]	East [ft]	Latitude	Longitude	DLS [°/100ft]	Comments
0.00†	0.000	311.070	0.00	0.00	0.00	0.00	40°02'46.597"N	104°54'30.967"W	0.00	
16.00	0.000	311.070	16.00	0.00	0.00	0.00	40°02'46.597"N	104°54'30.967"W	0.00	TIE-ON
116.00	0.190	311.070	116.00	0.09	0.11	-0.13	40°02'46.598"N	104°54'30.969"W	0.19	BEGIN GYRO SURVEYS
216.00	0.210	331.160	216.00	0.34	0.38	-0.34	40°02'46.601"N	104°54'30.971"W	0.07	
316.00	0.580	65.010	316.00	0.75	0.75	0.03	40°02'46.604"N	104°54'30.967"W	0.63	
416.00	0.560	70.980	415.99	1.23	1.13	0.95	40°02'46.608"N	104°54'30.955"W	0.06	
516.00	0.430	59.220	515.99	1.67	1.48	1.74	40°02'46.612"N	104°54'30.945"W	0.16	
616.00	0.440	63.880	615.99	2.10	1.84	2.40	40°02'46.615"N	104°54'30.936"W	0.04	
716.00	0.400	127.760	715.98	2.13	1.79	3.02	40°02'46.615"N	104°54'30.928"W	0.45	
816.00	0.510	140.290	815.98	1.64	1.24	3.59	40°02'46.609"N	104°54'30.921"W	0.15	
871.00	0.720	151.480	870.98	1.19	0.75	3.91	40°02'46.604"N	104°54'30.917"W	0.44	TIE ONTO GYRO SURVEYS
994.00	0.240	230.480	993.97	0.37	-0.10	4.08	40°02'46.596"N	104°54'30.915"W	0.58	BEGIN BHI MWD+IFR SURVEYS
1088.00	1.680	353.150	1087.96	1.57	1.15	3.76	40°02'46.608"N	104°54'30.919"W	1.94	
1182.00	2.120	350.320	1181.91	4.58	4.23	3.30	40°02'46.639"N	104°54'30.925"W	0.48	
1276.00	1.490	27.290	1275.86	7.39	7.03	3.57	40°02'46.666"N	104°54'30.921"W	1.37	
1370.00	1.450	89.220	1369.84	8.69	8.13	5.32	40°02'46.677"N	104°54'30.899"W	1.61	
1464.00	4.000	110.640	1463.73	8.05	6.99	9.58	40°02'46.666"N	104°54'30.844"W	2.87	
1558.00	4.350	133.480	1557.48	5.11	3.38	15.24	40°02'46.630"N	104°54'30.771"W	1.79	
1652.00	5.670	148.070	1651.13	-0.66	-3.01	20.28	40°02'46.567"N	104°54'30.706"W	1.94	
1746.00	7.920	161.790	1744.47	-10.17	-13.11	24.76	40°02'46.467"N	104°54'30.649"W	2.94	
1841.00	9.320	156.090	1838.39	-22.74	-26.36	29.92	40°02'46.337"N	104°54'30.582"W	1.72	
1935.00	10.330	157.100	1931.01	-36.63	-41.08	36.29	40°02'46.191"N	104°54'30.500"W	1.09	
2029.00	11.380	155.070	2023.33	-51.87	-57.25	43.48	40°02'46.031"N	104°54'30.408"W	1.19	
2121.00	11.160	152.830	2113.56	-67.01	-73.41	51.37	40°02'45.872"N	104°54'30.307"W	0.53	
2212.00	12.910	155.120	2202.55	-83.00	-90.46	59.67	40°02'45.703"N	104°54'30.200"W	1.99	
2303.00	12.690	155.120	2291.29	-100.19	-108.75	68.15	40°02'45.522"N	104°54'30.091"W	0.24	
2394.00	11.720	157.180	2380.23	-116.76	-126.34	75.94	40°02'45.348"N	104°54'29.991"W	1.17	
2485.00	10.570	157.700	2469.52	-132.12	-142.58	82.69	40°02'45.188"N	104°54'29.904"W	1.27	
2576.00	11.140	160.230	2558.89	-147.30	-158.58	88.83	40°02'45.030"N	104°54'29.825"W	0.82	
2667.00	11.950	154.490	2648.05	-163.16	-175.35	95.86	40°02'44.864"N	104°54'29.734"W	1.54	
2759.00	10.880	155.350	2738.23	-178.65	-191.84	103.59	40°02'44.701"N	104°54'29.635"W	1.18	
2850.00	11.430	148.140	2827.51	-193.05	-207.31	111.93	40°02'44.548"N	104°54'29.528"W	1.65	
2941.00	9.960	144.830	2916.93	-205.98	-221.40	121.22	40°02'44.409"N	104°54'29.408"W	1.75	
3032.00	10.870	144.550	3006.43	-218.22	-234.82	130.73	40°02'44.276"N	104°54'29.286"W	1.00	
3124.00	12.700	144.230	3096.49	-232.13	-250.10	141.67	40°02'44.125"N	104°54'29.145"W	1.99	
3215.00	11.470	145.900	3185.47	-246.38	-265.71	152.59	40°02'43.971"N	104°54'29.005"W	1.41	
3307.00	12.490	146.130	3275.46	-260.88	-281.54	163.27	40°02'43.815"N	104°54'28.868"W	1.11	
3398.00	11.140	146.950	3364.53	-275.14	-297.08	173.55	40°02'43.661"N	104°54'28.736"W	1.49	
3490.00	11.470	151.390	3454.75	-289.45	-312.56	182.77	40°02'43.508"N	104°54'28.617"W	1.01	
3581.00	12.710	153.220	3543.73	-305.20	-329.44	191.62	40°02'43.341"N	104°54'28.503"W	1.43	
3674.00	11.260	154.530	3634.70	-321.44	-346.77	200.13	40°02'43.170"N	104°54'28.394"W	1.59	
3767.00	12.630	152.560	3725.69	-337.56	-363.99	208.72	40°02'43.000"N	104°54'28.283"W	1.54	
3860.00	11.280	152.920	3816.67	-353.55	-381.12	217.55	40°02'42.831"N	104°54'28.170"W	1.45	
3954.00	12.200	151.110	3908.70	-369.29	-398.00	226.53	40°02'42.664"N	104°54'28.054"W	1.05	
4047.00	10.440	151.560	3999.89	-384.19	-414.01	235.29	40°02'42.506"N	104°54'27.942"W	1.89	



Actual Wellpath Report

UNDERHILL 1N-17HZ AWP

Page 3 of 6



REFERENCE WELLPATH IDENTIFICATION				
Operator	KERR-MCGEE OIL & GAS ONSHORE LP	Slot	SLOT#05 UNDERHILL 1N-17HZ (908'FSL & 992'FEL,SEC.17)	
Area	COLORADO	Well	UNDERHILL 1N-17HZ	
Field	WELD COUNTY (KERR MCGEE)	Wellbore	UNDERHILL 1N-17HZ AWB	
Facility	SEC.17-T1N-R67W			

WELLPATH DATA (143 stations)										
MD [ft]	Inclination [°]	Azimuth [°]	TVD [ft]	Vert Sect [ft]	North [ft]	East [ft]	Latitude	Longitude	DLS [°/100ft]	Comments
4141.00	9.650	150.690	4092.45	-397.54	-428.37	243.21	40°02'42.364"N	104°54'27.840"W	0.86	
4234.00	10.460	148.130	4184.02	-410.46	-442.34	251.48	40°02'42.226"N	104°54'27.733"W	0.99	
4327.00	10.940	146.460	4275.40	-423.82	-456.86	260.81	40°02'42.082"N	104°54'27.613"W	0.61	
4421.00	12.460	147.190	4367.44	-438.47	-472.82	271.24	40°02'41.924"N	104°54'27.479"W	1.62	
4514.00	12.550	149.210	4458.24	-454.25	-489.93	281.84	40°02'41.755"N	104°54'27.343"W	0.48	
4607.00	12.620	151.640	4549.00	-470.60	-507.55	291.84	40°02'41.581"N	104°54'27.214"W	0.57	
4701.00	12.270	153.920	4640.80	-487.42	-525.56	301.11	40°02'41.403"N	104°54'27.095"W	0.64	
4786.00	12.400	151.250	4723.84	-502.47	-541.68	309.47	40°02'41.244"N	104°54'26.988"W	0.69	
4871.00	13.380	151.380	4806.69	-517.95	-558.31	318.57	40°02'41.080"N	104°54'26.871"W	1.15	
4957.00	13.540	151.510	4890.33	-534.31	-575.89	328.14	40°02'40.906"N	104°54'26.748"W	0.19	
5042.00	13.370	152.890	4973.00	-550.63	-593.39	337.37	40°02'40.733"N	104°54'26.629"W	0.43	
5127.00	12.470	154.620	5055.84	-566.59	-610.43	345.78	40°02'40.565"N	104°54'26.521"W	1.15	
5212.00	12.560	151.240	5138.83	-581.91	-626.82	354.16	40°02'40.403"N	104°54'26.413"W	0.87	
5297.00	12.740	149.040	5221.76	-596.87	-642.96	363.43	40°02'40.243"N	104°54'26.294"W	0.61	
5383.00	13.450	150.370	5305.53	-612.46	-659.79	373.25	40°02'40.077"N	104°54'26.168"W	0.90	
5468.00	13.200	152.020	5388.24	-628.42	-676.95	382.69	40°02'39.907"N	104°54'26.046"W	0.54	
5553.00	11.950	152.220	5471.20	-643.67	-693.31	391.35	40°02'39.746"N	104°54'25.935"W	1.47	
5638.00	12.010	149.050	5554.35	-657.94	-708.68	400.00	40°02'39.594"N	104°54'25.824"W	0.78	
5723.00	12.810	144.600	5637.36	-671.96	-723.94	410.00	40°02'39.443"N	104°54'25.695"W	1.47	
5808.00	12.550	141.660	5720.29	-685.50	-738.87	421.19	40°02'39.295"N	104°54'25.551"W	0.82	
5893.00	12.070	147.240	5803.34	-698.90	-753.58	431.73	40°02'39.150"N	104°54'25.416"W	1.51	
5978.00	11.130	146.820	5886.60	-712.08	-767.92	441.03	40°02'39.008"N	104°54'25.296"W	1.11	
6063.00	10.250	145.830	5970.13	-724.11	-781.05	449.76	40°02'38.878"N	104°54'25.184"W	1.06	
6149.00	9.670	147.410	6054.83	-735.50	-793.46	457.95	40°02'38.756"N	104°54'25.079"W	0.75	
6234.00	8.410	149.260	6138.77	-745.97	-804.82	464.97	40°02'38.644"N	104°54'24.988"W	1.52	
6319.00	7.040	146.120	6223.00	-754.88	-814.49	471.06	40°02'38.548"N	104°54'24.910"W	1.69	
6404.00	5.610	149.120	6307.48	-762.14	-822.38	476.09	40°02'38.470"N	104°54'24.845"W	1.73	
6490.00	4.480	147.770	6393.15	-768.09	-828.83	480.04	40°02'38.406"N	104°54'24.795"W	1.32	
6575.00	3.560	152.610	6477.94	-772.86	-833.98	483.03	40°02'38.355"N	104°54'24.756"W	1.15	
6660.00	2.900	145.880	6562.80	-776.68	-838.10	485.45	40°02'38.315"N	104°54'24.725"W	0.89	
6746.00	2.590	145.560	6648.70	-779.79	-841.51	487.77	40°02'38.281"N	104°54'24.695"W	0.36	
6831.00	0.740	84.580	6733.67	-781.13	-843.04	489.40	40°02'38.266"N	104°54'24.674"W	2.73	
6916.00	0.850	61.740	6818.66	-780.65	-842.69	490.50	40°02'38.269"N	104°54'24.660"W	0.39	
7001.00	3.310	0.800	6903.60	-777.85	-839.94	491.09	40°02'38.296"N	104°54'24.653"W	3.52	
7044.00	7.660	11.260	6946.40	-773.76	-835.88	491.67	40°02'38.337"N	104°54'24.645"W	10.34	
7087.00	11.190	6.570	6988.81	-766.73	-828.92	492.70	40°02'38.405"N	104°54'24.632"W	8.39	
7129.00	14.780	2.160	7029.73	-757.31	-819.52	493.37	40°02'38.498"N	104°54'24.623"W	8.86	
7172.00	16.890	355.140	7071.10	-745.71	-807.81	493.05	40°02'38.614"N	104°54'24.627"W	6.62	
7214.00	20.630	351.500	7110.86	-732.59	-794.41	491.44	40°02'38.746"N	104°54'24.648"W	9.33	
7257.00	24.270	350.830	7150.60	-716.76	-778.19	488.91	40°02'38.907"N	104°54'24.681"W	8.49	
7299.00	29.220	350.960	7188.09	-698.57	-759.53	485.92	40°02'39.091"N	104°54'24.719"W	11.79	
7342.00	34.630	350.300	7224.57	-676.72	-737.11	482.21	40°02'39.313"N	104°54'24.767"W	12.61	
7384.00	40.970	349.130	7257.74	-652.11	-711.79	477.60	40°02'39.563"N	104°54'24.826"W	15.19	
7427.00	46.120	350.660	7288.90	-623.75	-682.64	472.42	40°02'39.851"N	104°54'24.893"W	12.22	
7470.00	48.590	352.650	7318.03	-593.19	-651.35	467.84	40°02'40.160"N	104°54'24.951"W	6.68	



Actual Wellpath Report

UNDERHILL 1N-17HZ AWP

Page 4 of 6



REFERENCE WELLPATH IDENTIFICATION

Operator	KERR-MCGEE OIL & GAS ONSHORE LP	Slot	SLOT#05 UNDERHILL 1N-17HZ (908'FSL & 992'FEL,SEC.17)
Area	COLORADO	Well	UNDERHILL 1N-17HZ
Field	WELD COUNTY (KERR MCGEE)	Wellbore	UNDERHILL 1N-17HZ AWB
Facility	SEC.17-T1N-R67W		

WELLPATH DATA (143 stations) † = interpolated/extrapolated station

MD [ft]	Inclination [°]	Azimuth [°]	TVD [ft]	Vert Sect [ft]	North [ft]	East [ft]	Latitude	Longitude	DLS [°/100ft]	Comments
7512.00	51.590	354.710	7344.98	-561.79	-619.33	464.31	40°02'40.477"N	104°54'24.997"W	8.07	
7555.00	54.650	355.800	7370.78	-528.08	-585.06	461.47	40°02'40.815"N	104°54'25.033"W	7.40	
7597.00	58.330	355.350	7393.96	-493.71	-550.15	458.77	40°02'41.160"N	104°54'25.068"W	8.81	
7640.00	62.700	355.010	7415.12	-457.03	-512.86	455.62	40°02'41.529"N	104°54'25.109"W	10.19	
7682.00	65.620	354.660	7433.43	-420.03	-475.22	452.22	40°02'41.901"N	104°54'25.152"W	6.99	
7725.00	66.770	354.200	7450.78	-381.57	-436.06	448.40	40°02'42.288"N	104°54'25.201"W	2.85	
7767.00	69.750	356.630	7466.34	-343.31	-397.18	445.29	40°02'42.672"N	104°54'25.241"W	8.90	
7809.00	72.970	0.560	7479.77	-303.91	-357.41	444.33	40°02'43.065"N	104°54'25.254"W	11.72	
7852.00	77.600	2.310	7490.69	-262.51	-315.85	445.37	40°02'43.476"N	104°54'25.240"W	11.46	
7894.00	80.420	2.080	7498.69	-221.40	-274.65	446.95	40°02'43.883"N	104°54'25.220"W	6.74	
7937.00	81.540	1.890	7505.44	-179.07	-232.21	448.42	40°02'44.302"N	104°54'25.201"W	2.64	
7971.00	84.560	0.330	7509.55	-145.48	-198.47	449.08	40°02'44.636"N	104°54'25.193"W	9.98	
8020.00†	87.341	0.532	7513.01	-96.89	-149.60	449.44	40°02'45.119"N	104°54'25.188"W	5.69	7" CASING POINT
8051.00	89.100	0.660	7513.97	-66.08	-118.62	449.77	40°02'45.425"N	104°54'25.184"W	5.69	
8137.00	88.880	0.150	7515.49	19.40	-32.64	450.37	40°02'46.274"N	104°54'25.176"W	0.65	
8222.00	88.630	0.240	7517.33	103.85	52.34	450.66	40°02'47.114"N	104°54'25.172"W	0.31	
8307.00	88.350	0.540	7519.57	188.32	137.31	451.24	40°02'47.954"N	104°54'25.165"W	0.48	
8392.00	87.870	359.300	7522.38	272.70	222.26	451.12	40°02'48.793"N	104°54'25.166"W	1.56	
8477.00	88.020	359.420	7525.43	356.96	307.20	450.17	40°02'49.633"N	104°54'25.178"W	0.23	
8563.00	88.060	0.340	7528.37	442.32	393.15	449.99	40°02'50.482"N	104°54'25.181"W	1.07	
8648.00	87.620	359.670	7531.57	526.69	478.09	450.00	40°02'51.322"N	104°54'25.181"W	0.94	
8733.00	88.270	1.140	7534.62	611.14	563.03	450.60	40°02'52.161"N	104°54'25.173"W	1.89	
8819.00	88.110	0.790	7537.34	696.68	648.98	452.05	40°02'53.010"N	104°54'25.154"W	0.45	
8904.00	88.180	0.150	7540.09	781.15	733.93	452.75	40°02'53.850"N	104°54'25.145"W	0.76	
8989.00	88.330	359.570	7542.68	865.52	818.89	452.54	40°02'54.689"N	104°54'25.148"W	0.70	
9074.00	89.410	0.870	7544.35	949.97	903.87	452.87	40°02'55.529"N	104°54'25.144"W	1.99	
9159.00	89.410	0.050	7545.23	1034.48	988.86	453.55	40°02'56.369"N	104°54'25.135"W	0.96	
9244.00	89.010	0.640	7546.40	1118.96	1073.85	454.06	40°02'57.209"N	104°54'25.128"W	0.84	
9329.00	89.250	0.290	7547.69	1203.47	1158.84	454.75	40°02'58.049"N	104°54'25.119"W	0.50	
9415.00	89.530	1.030	7548.61	1289.00	1244.83	455.74	40°02'58.899"N	104°54'25.107"W	0.92	
9584.00	90.980	1.090	7547.85	1457.20	1413.79	458.87	40°03'00.568"N	104°54'25.066"W	0.86	
9755.00	91.930	1.010	7543.51	1627.34	1584.70	462.00	40°03'02.257"N	104°54'25.026"W	0.56	
9840.00	90.270	1.100	7541.88	1711.92	1669.67	463.56	40°03'03.097"N	104°54'25.006"W	1.96	
9925.00	90.550	0.280	7541.27	1796.47	1754.66	464.59	40°03'03.937"N	104°54'24.993"W	1.02	
10010.00	88.760	359.280	7541.78	1880.86	1839.66	464.26	40°03'04.777"N	104°54'24.997"W	2.41	
10181.00	87.500	358.800	7547.36	2050.27	2010.54	461.40	40°03'06.466"N	104°54'25.034"W	0.79	
10266.00	87.260	358.990	7551.25	2134.42	2095.43	459.76	40°03'07.305"N	104°54'25.055"W	0.36	
10352.00	87.100	358.940	7555.48	2219.55	2181.31	458.21	40°03'08.153"N	104°54'25.075"W	0.19	
10437.00	88.200	359.260	7558.96	2303.75	2266.23	456.87	40°03'08.992"N	104°54'25.092"W	1.35	
10522.00	89.660	359.280	7560.55	2388.04	2351.21	455.79	40°03'09.832"N	104°54'25.106"W	1.72	
10693.00	90.580	359.320	7560.19	2557.64	2522.19	453.70	40°03'11.522"N	104°54'25.133"W	0.54	
10863.00	90.860	359.370	7558.06	2726.27	2692.17	451.76	40°03'13.202"N	104°54'25.158"W	0.17	
11034.00	90.950	359.760	7555.36	2895.96	2863.14	450.46	40°03'14.891"N	104°54'25.174"W	0.23	
11119.00	89.960	0.430	7554.68	2980.40	2948.14	450.60	40°03'15.731"N	104°54'25.172"W	1.41	
11289.00	90.730	359.660	7553.66	3149.28	3118.13	450.74	40°03'17.411"N	104°54'25.171"W	0.64	



Actual Wellpath Report

UNDERHILL 1N-17HZ AWP

Page 5 of 6



REFERENCE WELLPATH IDENTIFICATION

Operator	KERR-MCGEE OIL & GAS ONSHORE LP	Slot	SLOT#05 UNDERHILL 1N-17HZ (908'FSL & 992'FEL,SEC.17)
Area	COLORADO	Well	UNDERHILL 1N-17HZ
Field	WELD COUNTY (KERR MCGEE)	Wellbore	UNDERHILL 1N-17HZ AWB
Facility	SEC.17-T1N-R67W		

WELLPATH DATA (143 stations)

MD [ft]	Inclination [°]	Azimuth [°]	TVD [ft]	Vert Sect [ft]	North [ft]	East [ft]	Latitude	Longitude	DLS [°/100ft]	Comments
11374.00	88.670	359.420	7554.10	3233.63	3203.12	450.05	40°03'18.251"N	104°54'25.179"W	2.44	
11459.00	87.910	359.720	7556.64	3317.95	3288.08	449.42	40°03'19.091"N	104°54'25.188"W	0.96	
11543.00	88.110	359.610	7559.56	3401.29	3372.03	448.92	40°03'19.920"N	104°54'25.194"W	0.27	
11628.00	88.830	0.710	7561.83	3485.72	3457.00	449.16	40°03'20.760"N	104°54'25.191"W	1.55	
11713.00	88.790	0.650	7563.59	3570.24	3541.97	450.17	40°03'21.600"N	104°54'25.178"W	0.08	
11883.00	88.210	359.790	7568.04	3739.13	3711.91	450.82	40°03'23.279"N	104°54'25.169"W	0.61	
12004.00	87.860	359.810	7572.19	3859.21	3832.84	450.40	40°03'24.474"N	104°54'25.175"W	0.29	LAST BHI MWD+IFR SURVEY
12058.00	87.860	359.810	7574.21	3912.79	3886.80	450.22	40°03'25.007"N	104°54'25.177"W	0.00	PROJECTION TO BIT

HOLE & CASING SECTIONS - Ref Wellbore: UNDERHILL 1N-17HZ AWB Ref Wellpath: UNDERHILL 1N-17HZ AWP

String/Diameter	Start MD [ft]	End MD [ft]	Interval [ft]	Start TVD [ft]	End TVD [ft]	Start N/S [ft]	Start E/W [ft]	End N/S [ft]	End E/W [ft]
13.5in Open Hole	16.00	927.00	911.00	16.00	926.97	0.00	0.00	0.23	4.12
9.625in Casing Surface	16.00	927.00	911.00	16.00	926.97	0.00	0.00	0.23	4.12
8.75in Open Hole	927.00	8030.00	7103.00	926.97	7513.42	0.23	4.12	-139.61	449.54
7in Casing Intermediate	16.00	8020.00	8004.00	16.00	7513.01	0.00	0.00	-149.60	449.44
6.125in Open Hole	8030.00	12058.00	4028.00	7513.42	7574.21	-139.61	449.54	3886.80	450.22

TARGETS

Name	MD [ft]	TVD [ft]	North [ft]	East [ft]	Grid East [US ft]	Grid North [US ft]	Latitude	Longitude	Shape
UNDERHILL 15-17 PAD SECTION 17 LINES		5119.00	-56.44	-528.33	3165040.71	1260196.51	40°02'46.039"N	104°54'37.760"W	polygon
UNDERHILL 1N-17HZ LAND BOX		5119.00	-56.44	-528.33	3165040.71	1260196.51	40°02'46.039"N	104°54'37.760"W	polygon
UNDERHILL 1N-17HZ BHL ON PLAT REV-2 (460'FNL & 510'FEL,SEC.17)		7544.00	3912.18	473.32	3166015.83	1264171.56	40°03'25.258"N	104°54'24.880"W	point
UNDERHILL 1N-17HZ BHL ON PLAT REV-1 (460'FNL & 510'FEL,SEC.17)		7549.00	3912.18	473.32	3166015.83	1264171.56	40°03'25.258"N	104°54'24.880"W	point

WELLPATH COMPOSITION - Ref Wellbore: UNDERHILL 1N-17HZ AWB Ref Wellpath: UNDERHILL 1N-17HZ AWP

Start MD [ft]	End MD [ft]	Positional Uncertainty Model	Log Name/Comment	Wellbore
16.00	871.00	Generic gyro - continuous (Standard)	MS GYRODATA SURVEYS <116-871>	UNDERHILL 1N-17HZ AWB
871.00	7971.00	NaviTrak (MAGCORR,IFR)	BHI NAVITRAK MWD+IFR 8 3/4" HOLE <994-7971>	UNDERHILL 1N-17HZ AWB
7971.00	12004.00	NaviTrak (MAGCORR,IFR)	BHI NAVITRAK MWD+IFR 6 1/8" <8051-12004>	UNDERHILL 1N-17HZ AWB
12004.00	12058.00	Blind Drilling (std)	Projection to bit	UNDERHILL 1N-17HZ AWB



Actual Wellpath Report

UNDERHILL 1N-17HZ AWP

Page 6 of 6



REFERENCE WELLPATH IDENTIFICATION

Operator	KERR-MCGEE OIL & GAS ONSHORE LP	Slot	SLOT#05 UNDERHILL 1N-17HZ (908'FSL & 992'FEL,SEC.17)
Area	COLORADO	Well	UNDERHILL 1N-17HZ
Field	WELD COUNTY (KERR MCGEE)	Wellbore	UNDERHILL 1N-17HZ AWB
Facility	SEC.17-T1N-R67W		

WELLPATH COMMENTS

MD [ft]	Inclination [°]	Azimuth [°]	TVD [ft]	Comment
16.00	0.000	311.070	16.00	TIE-ON
116.00	0.190	311.070	116.00	BEGIN GYRO SURVEYS
871.00	0.720	151.480	870.98	TIE ONTO GYRO SURVEYS
994.00	0.240	230.480	993.97	BEGIN BHI MWD+IFR SURVEYS
8020.00	87.341	0.532	7513.01	7" CASING POINT
12004.00	87.860	359.810	7572.19	LAST BHI MWD+IFR SURVEY
12058.00	87.860	359.810	7574.21	PROJECTION TO BIT