

# T7S, R96W, 6th P.M.

# WPX Energy Rocky Mountain, LLC

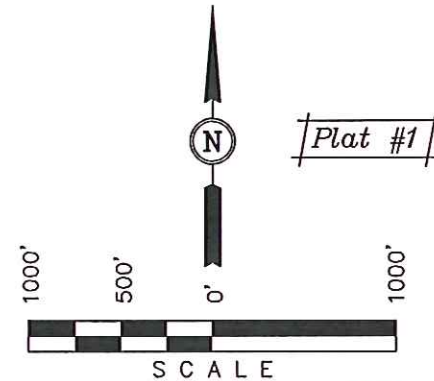
Well location, GM 411-13 (SURFACE LOCATION), located as shown in the SW 1/4 SW 1/4 of Section 12, T7S, R96W, 6th P.M., Garfield County, Colorado.

## BASIS OF ELEVATION

SPOT ELEVATION AT THE NORTHWEST CORNER OF SECTION 30, T5S, R95W, 6th P.M. TAKEN FROM THE FORKED GULCH QUADRANGLE, COLORADO, GARFIELD COUNTY, 7.5 MINUTE SERIES (TOPOGRAPHICAL MAP) PUBLISHED BY THE UNITED STATES DEPARTMENT OF THE INTERIOR, GEOLOGICAL SURVEY. SAID ELEVATION IS MARKED AS BEING 5966 FEET.

## BASIS OF BEARINGS

BASIS OF BEARINGS IS A G.P.S. OBSERVATION.



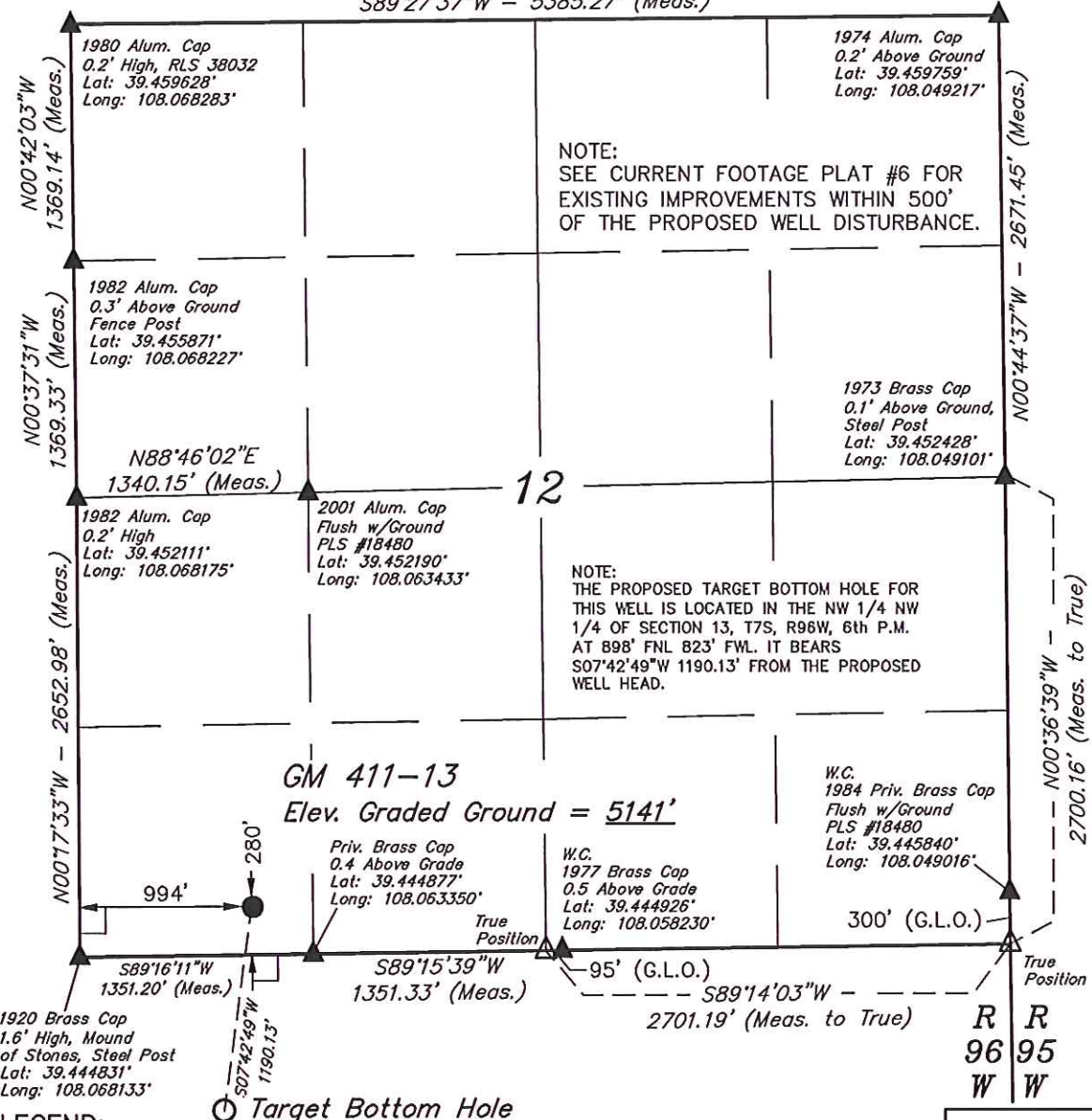
## CERTIFICATE

THIS IS TO CERTIFY THAT THE ABOVE PLAT WAS PREPARED AND LOCATION AS SHOWN WAS STAKED ON THE GROUND FROM FIELD NOTES OF ACTUAL SURVEYS MADE BY ME OR UNDER MY SUPERVISION AND THAT THE SAME ARE TRUE AND CORRECT TO THE BEST OF MY KNOWLEDGE AND BELIEF.

*[Signature]*  
 REGISTERED LAND SURVEYOR  
 REGISTRATION NO. 17492  
 STATE OF COLORADO  
 09-29-13

**UINTAH ENGINEERING & LAND SURVEYING**  
 85 SOUTH 200 EAST - VERNAL, UTAH 84078  
 (435) 789-1017

589°27'37"W - 5385.27' (Meas.)



NOTE:  
 SEE CURRENT FOOTAGE PLAT #6 FOR EXISTING IMPROVEMENTS WITHIN 500' OF THE PROPOSED WELL DISTURBANCE.

NOTE:  
 THE PROPOSED TARGET BOTTOM HOLE FOR THIS WELL IS LOCATED IN THE NW 1/4 NW 1/4 OF SECTION 13, T7S, R96W, 6th P.M. AT 898' FNL 823' FWL. IT BEARS S07°42'49"W 1190.13' FROM THE PROPOSED WELL HEAD.

**GM 411-13**  
 Elev. Graded Ground = 5141'

<b>NAD 83 (SURFACE LOCATION)</b>	
LATITUDE = 39°26'44.27" (39.445631)	
LONGITUDE = 108°03'52.63" (108.064619)	
<b>STATE PLANE--(COLO. CENTRAL--NAD 83)</b>	
N = 1597423.17	
E = 2275841.59	

PDOP = 1.3

### LEGEND:

- ⊥ = 90° SYMBOL
- = PROPOSED WELL HEAD.
- ▲ = SECTION CORNERS LOCATED.
- △ = SECTION CORNERS RE-ESTABLISHED. (Not Set on Ground.)

SCALE 1" = 1000'	DATE SURVEYED: 05-03-13	DATE DRAWN: 07-25-13
PARTY B.B. T.M. M.D.	REFERENCES G.L.O. PLAT	
WEATHER COLD	FILE WPX Energy Rocky Mountain, LLC	

# T7S, R96W, 6th P.M.

1920 Brass Cap  
1.6' High, Mound  
of Stones, Steel Post  
Lat: 39.444831°  
Long: 108.068133°

Surface  
Location

Priv. Brass Cap  
0.4 Above Grade  
Lat: 39.444877°  
Long: 108.063350°

W.C. 1984 Priv. Brass Cap  
Flush w/Ground PLS #18480  
Lat: 39.445840°  
Long: 108.049016°

89°16'11"W  
1351.20' (Meas.)

89°15'39"W  
1351.33' (Meas.)

95' (G.L.O.)

300' (G.L.O.)

89°14'03"W -  
2701.19' (Meas. to True)

True Position

GM 411-13  
Target Bottom Hole

W.C.  
1977 Brass Cap  
0.5 Above Grade  
Lat: 39.444926°  
Long: 108.058230°

100°36'01"W  
1336.64' (Meas.)

100°35'47"W  
1336.57' (Meas.)

100°35'57"W  
1337.81' (Meas.)

100°35'24"W  
1335.00' (Meas.)

2013 Alum. Cap  
0.3' High  
Lat: 39.441163°  
Long: 108.068085°

Alum. Cap  
Lat: 39.437495°  
Long: 108.068038°

NOTE:  
THE PROPOSED TARGET BOTTOM HOLE  
BEARS S07°42'49"W 1190.13' FROM THE  
PROPOSED WELL HEAD WHICH IS LOCATED IN  
THE SW 1/4 SW 1/4 OF SECTION 12, T7S,  
R96W, 6th P.M. AT 280' FSL 994' FWL.

13

B.O.R. Brass Cap  
1.4' High  
Lat: 39.437672°  
Long: 108.048886°

Alum. Cap  
Lat: 39.433823°  
Long: 108.067990°

Alum. Cap  
Lat: 39.430159°  
Long: 108.067944°

1982 BLM Alum. Cap  
0.2' High  
Lat: 39.430276°  
Long: 108.058371°

1982 Priv. Brass Cap  
0.4' Below Ground  
LS 11643  
Lat: 39.430396°  
Long: 108.048798°

S89°04'17"W - 2705.17' (Meas.)

S89°02'17"W - 2705.22' (Meas.)

R R  
96 95  
W W

## WPX Energy Rocky Mountain, LLC

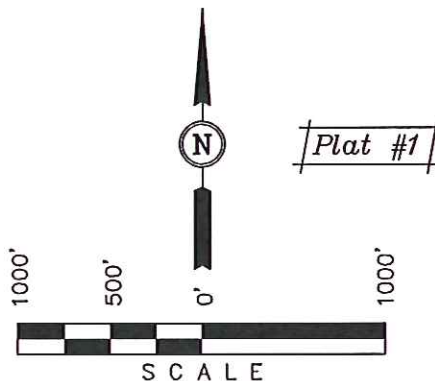
Well location, GM 411-13 (TARGET BOTTOM HOLE),  
located as shown in the NW 1/4 NW 1/4 of  
Section 13, T7S, R96W, 6th P.M., Garfield County,  
Colorado.

### BASIS OF ELEVATION

SPOT ELEVATION AT THE NORTHWEST CORNER OF SECTION  
30, T5S, R95W, 6th P.M. TAKEN FROM THE FORKED GULCH  
QUADRANGLE, COLORADO, GARFIELD COUNTY, 7.5 MINUTE  
SERIES (TOPOGRAPHICAL MAP) PUBLISHED BY THE UNITED  
STATES DEPARTMENT OF THE INTERIOR, GEOLOGICAL SURVEY.  
SAID ELEVATION IS MARKED AS BEING 5966 FEET.

### BASIS OF BEARINGS

BASIS OF BEARINGS IS A G.P.S. OBSERVATION.



### CERTIFICATE

THIS IS TO CERTIFY THAT THE ABOVE PLAN WAS PREPARED AND  
LOCATION AS SHOWN WAS STAKED ON THE GROUND FROM FIELD  
NOTES OF ACTUAL SURVEYS MADE BY ME OR UNDER MY  
SUPERVISION AND THAT THE SAME ARE TRUE AND CORRECT TO  
THE BEST OF MY KNOWLEDGE AND BELIEF.

*[Signature]*  
REGISTERED LAND SURVEYOR  
REGISTRATION NO. 17492  
STATE OF COLORADO  
09-29-13

### UINTAH ENGINEERING & LAND SURVEYING

85 SOUTH 200 EAST - VERNAL, UTAH 84078

(435) 789-1017

### LEGEND:

- └─┘ = 90° SYMBOL
- = PROPOSED WELL HEAD.
- ▲ = SECTION CORNERS LOCATED.
- △ = SECTION CORNER RE-ESTABLISHED.  
(Not Set on Ground.)

NAD 83 (TARGET BOTTOM HOLE)  
LATITUDE = 39°26'32.62" (39.442394)  
LONGITUDE = 108°03'54.67" (108.065186)  
STATE PLANE-(COLO. CENTRAL-NAD 83)  
N = 1596249.26  
E = 2275648.11

SCALE 1" = 1000'	DATE SURVEYED: 05-03-13	DATE DRAWN: 07-25-13
PARTY B.B. T.M. M.D.	REFERENCES G.L.O. PLAT	
WEATHER COLD	FILE WPX Energy Rocky Mountain, LLC	