

T7S, R96W, 6th P.M.

1980 Alum. Cap
0.2' High, RLS 38032
Lat: 39.459628°
Long: 108.068283°

1974 Alum. Cap
0.2' Above Ground
Lat: 39.459759°
Long: 108.049217°

WPX Energy Rocky Mountain, LLC

Well location, GM 321-13 (SURFACE LOCATION),
located as shown in the SW 1/4 SW 1/4 of
Section 12, T7S, R96W, 6th P.M., Garfield County,
Colorado.

BASIS OF ELEVATION

SPOT ELEVATION AT THE NORTHWEST CORNER OF SECTION
30, T5S, R95W, 6th P.M. TAKEN FROM THE FORKED GULCH
QUADRANGLE, COLORADO, GARFIELD COUNTY, 7.5 MINUTE
SERIES (TOPOGRAPHICAL MAP) PUBLISHED BY THE UNITED
STATES DEPARTMENT OF THE INTERIOR, GEOLOGICAL SURVEY.
SAID ELEVATION IS MARKED AS BEING 5966 FEET.

BASIS OF BEARINGS

BASIS OF BEARINGS IS A G.P.S. OBSERVATION.

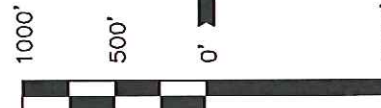
NOTE:
SEE CURRENT FOOTAGE PLAT #6 FOR
EXISTING IMPROVEMENTS WITHIN 500'
OF THE PROPOSED WELL DISTURBANCE.

NOTE:
THE PROPOSED TARGET BOTTOM HOLE FOR
THIS WELL IS LOCATED IN THE NE 1/4 NW
1/4 OF SECTION 13, T7S, R96W, 6th P.M.
AT 418' FNL 2181' FWL. IT BEARS
S59°32'51"E 1339.42' FROM THE PROPOSED
WELL HEAD.

1973 Brass Cap
0.1' Above Ground,
Steel Post
Lat: 39.452428°
Long: 108.049101°



Plat #1



SCALE

CERTIFICATE

THIS IS TO CERTIFY THAT THE ABOVE PLAT WAS PREPARED AND
LOCATION AS SHOWN WAS STAKED ON THE GROUND FROM FIELD
NOTES OF ACTUAL SURVEYS MADE BY ME OR UNDER MY
SUPERVISION AND THAT THE SAME ARE TRUE AND CORRECT TO
THE BEST OF MY KNOWLEDGE AND BELIEF.

REGISTERED LAND SURVEYOR
REGISTRATION NO. 17492
STATE OF COLORADO
09-29-13

GM 321-13
Elev. Graded Ground = 5141'

W.C.
1984 Priv. Brass Cap
Flush w/Ground
PLS #18480
Lat: 39.445840°
Long: 108.049016°

W.C.
1977 Brass Cap
0.5 Above Grade
Lat: 39.444926°
Long: 108.058230°

300' (G.L.O.)

Target Bottom Hole

1920 Brass Cap
1.6' High, Mound
of Stones, Steel Post
Lat: 39.444831°
Long: 108.068133°

Priv. Brass Cap
0.4 Above Grade
Lat: 39.444877°
Long: 108.063350°

LEGEND:

- └─┘ = 90° SYMBOL
- = PROPOSED WELL HEAD.
- ▲ = SECTION CORNERS LOCATED.
- △ = SECTION CORNERS RE-ESTABLISHED.
(Not Set on Ground.)

PDOP = 1.3

NAD 83 (SURFACE LOCATION)
LATITUDE = 39°26'44.24" (39.445622)
LONGITUDE = 108°03'52.14" (108.064483)
STATE PLANE--(COLO. CENTRAL--NAD 83)
N = 1597418.41
E = 2275880.09

UINTAH ENGINEERING & LAND SURVEYING
85 SOUTH 200 EAST - VERNAL, UTAH 84078
(435) 789-1017

SCALE 1" = 1000'	DATE SURVEYED: 05-03-13	DATE DRAWN: 07-25-13
PARTY B.B. T.M. M.D.	REFERENCES G.L.O. PLAT	
WEATHER COLD	FILE WPX Energy Rocky Mountain, LLC	

T7S, R96W, 6th P.M.

1920 Brass Cap
1.6' High, Mound
of Stones, Steel Post
Lat: 39.444831°
Long: 108.068133°

Surface
Location

Priv. Brass Cap
0.4 Above Grade
Lat: 39.444877°
Long: 108.063350°

True
Position

W.C. 1984 Priv. Brass Cap
Flush w/Ground PLS #18480
Lat: 39.445840°
Long: 108.049016°

S89°14'03"W -
2701.19' (Meas. to True)

300' (G.L.O.)

True
Position

W.C. 1977 Brass Cap
0.5 Above Grade
Lat: 39.444926°
Long: 108.058230°

GM 321-13
Target Bottom Hole

NOTE:
THE PROPOSED TARGET BOTTOM HOLE
BEARS S59°32'51"E 1339.42' FROM THE
PROPOSED WELL HEAD WHICH IS LOCATED IN
THE SW 1/4 SW 1/4 OF SECTION 12, T7S,
R96W, 6th P.M. AT 275' FSL 1032' FWL.

B.O.R. Brass Cap
1.4' High
Lat: 39.437672°
Long: 108.048886°

1982 Priv. Brass Cap
0.4' Below Ground
LS 11643
Lat: 39.430396°
Long: 108.048798°

1982 BLM Alum. Cap
0.2' High
Lat: 39.430276°
Long: 108.058371°

Alum. Cap
Lat: 39.430159°
Long: 108.067944°

Alum. Cap
Lat: 39.433823°
Long: 108.067990°

Alum. Cap
Lat: 39.437495°
Long: 108.068038°

2013 Alum. Cap
0.3' High
Lat: 39.441163°
Long: 108.068085°

N00°36'01"W
1336.64' (Meas.)

N00°35'47"W
1336.57' (Meas.)

N00°35'57"W
1337.81' (Meas.)

N00°35'24"W
1335.00' (Meas.)

S89°04'17"W - 2705.17' (Meas.)

S89°02'17"W - 2705.22' (Meas.)

R
96
W
R
95
W

LEGEND:

- └─ = 90° SYMBOL
- = PROPOSED WELL HEAD.
- ▲ = SECTION CORNERS LOCATED.
- △ = SECTION CORNER RE-ESTABLISHED.
(Not Set on Ground.)

NAD 83 (TARGET BOTTOM HOLE)
LATITUDE = 39°26'37.52" (39.443756)
LONGITUDE = 108°03'37.43" (108.060397)
STATE PLANE-(COLO. CENTRAL-NAD 83)
N = 1596705.91
E = 2277014.40

WPX Energy Rocky Mountain, LLC

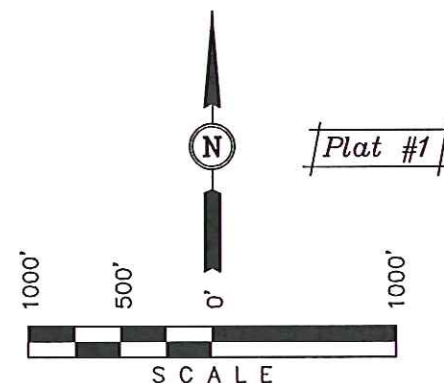
Well location, GM 321-13 (TARGET BOTTOM HOLE),
located as shown in the NE 1/4 NW 1/4 of
Section 13, T7S, R96W, 6th P.M., Garfield County,
Colorado.

BASIS OF ELEVATION

SPOT ELEVATION AT THE NORTHWEST CORNER OF SECTION
30, T5S, R95W, 6th P.M. TAKEN FROM THE FORKED GULCH
QUADRANGLE, COLORADO, GARFIELD COUNTY, 7.5 MINUTE
SERIES (TOPOGRAPHICAL MAP) PUBLISHED BY THE UNITED
STATES DEPARTMENT OF THE INTERIOR, GEOLOGICAL SURVEY.
SAID ELEVATION IS MARKED AS BEING 5966 FEET.

BASIS OF BEARINGS

BASIS OF BEARINGS IS A G.P.S. OBSERVATION.



CERTIFICATE

THIS IS TO CERTIFY THAT THE ABOVE PLAT WAS PREPARED AND
LOCATION AS SHOWN WAS STAKED ON THE GROUND FROM FIELD
NOTES OF ACTUAL SURVEYS MADE BY ME OR UNDER MY
SUPERVISION AND THAT THE SAME ARE TRUE AND CORRECT TO
THE BEST OF MY KNOWLEDGE AND BELIEF.

REGISTERED LAND SURVEYOR
REGISTRATION NO. 17492
STATE OF COLORADO
07-29-13

UINTAH ENGINEERING & LAND SURVEYING

85 SOUTH 200 EAST - VERNAL, UTAH 84078

(435) 789-1017

SCALE 1" = 1000'	DATE SURVEYED: 05-03-13	DATE DRAWN: 07-25-13
PARTY B.B. T.M. M.D.	REFERENCES G.L.O. PLAT	
WEATHER COLD	FILE WPX Energy Rocky Mountain, LLC	