

T7S, R96W, 6th P.M.

WPX Energy Rocky Mountain, LLC

1980 Alum. Cap  
0.2' High, RLS 38032  
Lat: 39.459628'  
Long: 108.068283'

1974 Alum. Cap  
0.2' Above Ground  
Lat: 39.459759'  
Long: 108.049217'

S89°27'37"W - 5385.27' (Meas.)

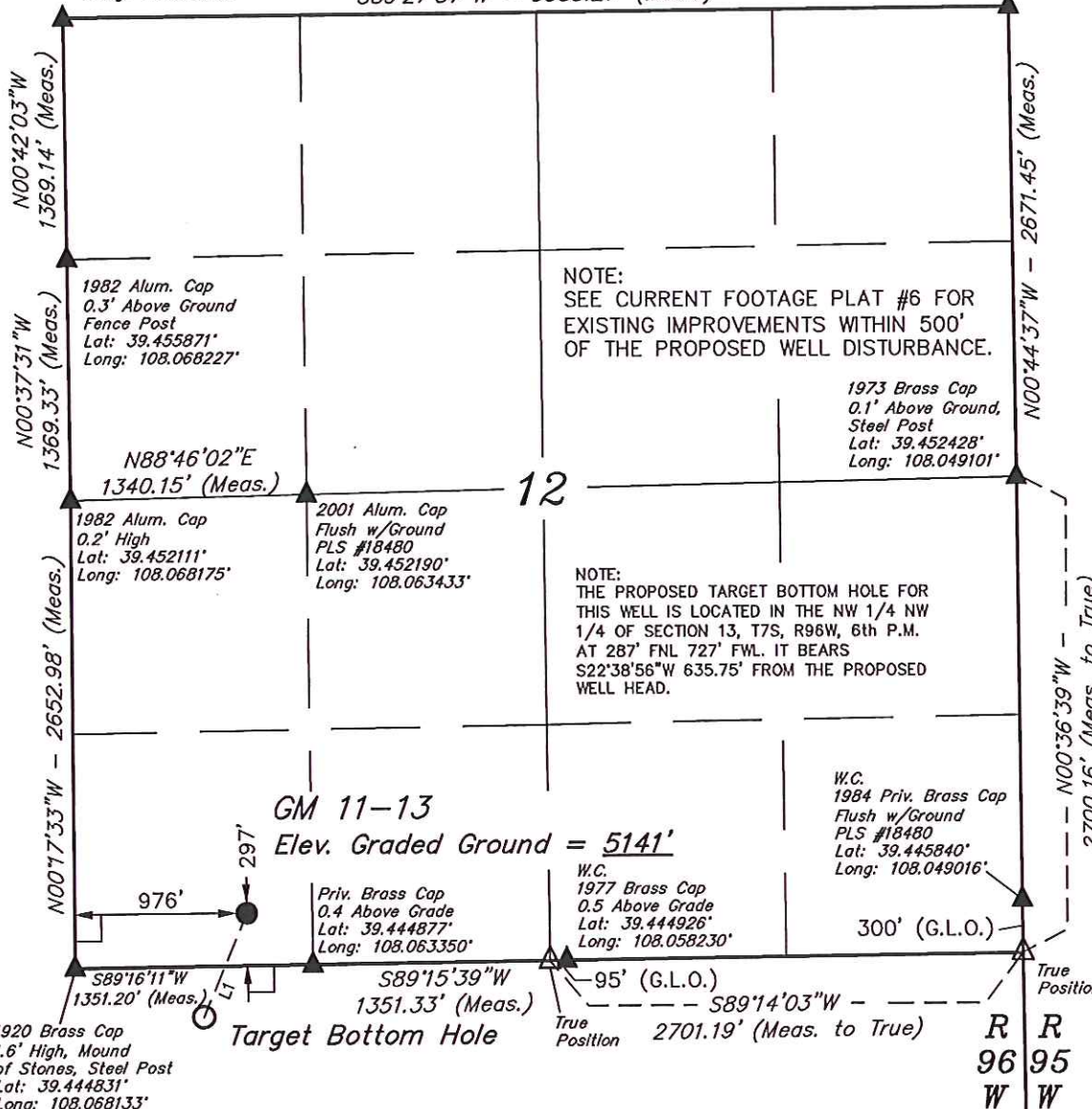
Well location, GM 11-13 (SURFACE LOCATION),  
located as shown in the SW 1/4 SW 1/4 of  
Section 12, T7S, R96W, 6th P.M., Garfield County,  
Colorado.

**BASIS OF ELEVATION**

SPOT ELEVATION AT THE NORTHWEST CORNER OF SECTION  
30, T5S, R95W, 6th P.M. TAKEN FROM THE FORKED GULCH  
QUADRANGLE, COLORADO, GARFIELD COUNTY, 7.5 MINUTE  
SERIES (TOPOGRAPHICAL MAP) PUBLISHED BY THE UNITED  
STATES DEPARTMENT OF THE INTERIOR, GEOLOGICAL SURVEY.  
SAID ELEVATION IS MARKED AS BEING 5966 FEET.

**BASIS OF BEARINGS**

BASIS OF BEARINGS IS A G.P.S. OBSERVATION.



NOTE:  
SEE CURRENT FOOTAGE PLAT #6 FOR  
EXISTING IMPROVEMENTS WITHIN 500'  
OF THE PROPOSED WELL DISTURBANCE.

NOTE:  
THE PROPOSED TARGET BOTTOM HOLE FOR  
THIS WELL IS LOCATED IN THE NW 1/4 NW  
1/4 OF SECTION 13, T7S, R96W, 6th P.M.  
AT 287' FNL 727' FWL. IT BEARS  
S22°38'56"W 635.75' FROM THE PROPOSED  
WELL HEAD.

LINE TABLE		
LINE	DIRECTION	LENGTH
L1	S22°38'56"W	635.75'



Plat #1



**CERTIFICATE**

THIS IS TO CERTIFY THAT THE ABOVE PLAT WAS PREPARED AND  
LOCATION AS SHOWN WAS STAKED ON THE GROUND FROM FIELD  
NOTES OF ACTUAL SURVEYS MADE BY ME OR UNDER MY  
SUPERVISION AND THAT THE SAME ARE TRUE AND CORRECT TO  
THE BEST OF MY KNOWLEDGE AND BELIEF.

*[Signature]*  
REGISTERED LAND SURVEYOR  
REGISTRATION NO. 17492  
STATE OF COLORADO  
07-29-13

**UINTAH ENGINEERING & LAND SURVEYING**

85 SOUTH 200 EAST - VERNAL, UTAH 84078

(435) 789-1017

**LEGEND:**

- ☐ = 90° SYMBOL
- = PROPOSED WELL HEAD.
- ▲ = SECTION CORNERS LOCATED.
- △ = SECTION CORNERS RE-ESTABLISHED.  
(Not Set on Ground.)

PDOP = 1.5

NAD 83 (SURFACE LOCATION)	
LATITUDE	= 39°26'44.44" (39.445678)
LONGITUDE	= 108°03'52.85" (108.064681)
STATE PLANE-COLO. CENTRAL-NAD 83	
N	= 1597440.85
E	= 2275824.47

SCALE 1" = 1000'	DATE SURVEYED: 05-03-13	DATE DRAWN: 07-25-13
PARTY B.B. T.M. M.D.	REFERENCES G.L.O. PLAT	
WEATHER COLD	FILE WPX Energy Rocky Mountain, LLC	

# T7S, R96W, 6th P.M.

1920 Brass Cap  
1.6' High, Mound  
of Stones, Steel Post  
Lat: 39.444831'  
Long: 108.068133'

Surface  
Location

Priv. Brass Cap  
0.4 Above Grade  
Lat: 39.444877'  
Long: 108.063350'

W.C. 1984 Priv. Brass Cap  
Flush w/Ground PLS #18480  
Lat: 39.445840'  
Long: 108.049016'

589°16'11"W  
1351.20' (Meas.)

589°15'39"W  
1351.33' (Meas.)

589°14'03"W -  
2701.19' (Meas. to True)

95' (G.L.O.)  
300' (G.L.O.)

GM 11-13  
Target Bottom Hole

W.C.  
1977 Brass Cap  
0.5 Above Grade  
Lat: 39.444926'  
Long: 108.058230'

True  
Position

N00°36'01"W  
1336.64' (Meas.)

N00°35'47"W  
1336.57' (Meas.)

2013 Alum. Cap  
0.3' High  
Lat: 39.441163'  
Long: 108.068085'

NOTE:  
THE PROPOSED TARGET BOTTOM HOLE  
BEARS S22°38'56"W 635.75' FROM THE  
PROPOSED WELL HEAD WHICH IS LOCATED IN  
THE SW 1/4 SW 1/4 OF SECTION 12, T7S,  
R96W, 6th P.M. AT 297' FSL 976' FWL.

Alum. Cap  
Lat: 39.437495'  
Long: 108.068038'

13

B.O.R. Brass Cap  
1.4' High  
Lat: 39.437672'  
Long: 108.048886'

N00°45'39"W - 2676.36' (Meas.)

N00°34'22"W - 2651.23' (Meas.)

N00°35'57"W  
1337.81' (Meas.)

Alum. Cap  
Lat: 39.433823'  
Long: 108.067990'

N00°35'24"W  
1335.00' (Meas.)

Alum. Cap  
Lat: 39.430159'  
Long: 108.067944'

1982 BLM Alum. Cap  
0.2' High  
Lat: 39.430276'  
Long: 108.058371'

1982 Priv. Brass Cap  
0.4' Below Ground  
LS 11643  
Lat: 39.430396'  
Long: 108.048798'

589°04'17"W - 2705.17' (Meas.)

589°02'17"W - 2705.22' (Meas.)

R R  
96 95  
W W

## WPX Energy Rocky Mountain, LLC

Well location, GM 11-13 (TARGET BOTTOM HOLE),  
located as shown in the NW 1/4 NW 1/4 of  
Section 13, T7S, R96W, 6th P.M., Garfield County,  
Colorado.

### BASIS OF ELEVATION

SPOT ELEVATION AT THE NORTHWEST CORNER OF SECTION  
30, T5S, R95W, 6th P.M. TAKEN FROM THE FORKED GULCH  
QUADRANGLE, COLORADO, GARFIELD COUNTY, 7.5 MINUTE  
SERIES (TOPOGRAPHICAL MAP) PUBLISHED BY THE UNITED  
STATES DEPARTMENT OF THE INTERIOR, GEOLOGICAL SURVEY.  
SAID ELEVATION IS MARKED AS BEING 5966 FEET.

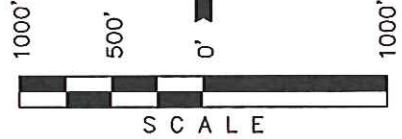
### BASIS OF BEARINGS

BASIS OF BEARINGS IS A G.P.S. OBSERVATION.

LINE TABLE		
LINE	DIRECTION	LENGTH
L1	S22°38'56"W	635.75'



Plat #1



### CERTIFICATE

THIS IS TO CERTIFY THAT THE ABOVE PLAT WAS PREPARED AND  
LOCATION AS SHOWN WAS STAKED ON THE GROUND FROM FIELD  
NOTES OF ACTUAL SURVEYS MADE BY ME OR UNDER MY  
SUPERVISION AND THAT THE SAME ARE TRUE AND CORRECT TO  
THE BEST OF MY KNOWLEDGE AND BELIEF.

*[Signature]*  
REGISTERED LAND SURVEYOR  
REGISTRATION NO. 17492  
STATE OF COLORADO  
09-29-13

### UINTAH ENGINEERING & LAND SURVEYING

85 SOUTH 200 EAST - VERNAL, UTAH 84078

(435) 789-1017

### LEGEND:

- └─┘ = 90° SYMBOL
- = PROPOSED WELL HEAD.
- ▲ = SECTION CORNERS LOCATED.
- △ = SECTION CORNER RE-ESTABLISHED.  
(Not Set on Ground.)

NAD 83 (TARGET BOTTOM HOLE)	
LATITUDE	= 39°26'38.65" (39.444089)
LONGITUDE	= 108°03'55.98" (108.065550)
STATE PLANE-(COLO. CENTRAL-NAD 83)	
N	= 1596861.59
E	= 2275562.99

SCALE 1" = 1000'	DATE SURVEYED: 05-03-13	DATE DRAWN: 07-25-13
PARTY B.B. T.M. M.D.	REFERENCES G.L.O. PLAT	
WEATHER COLD	FILE	WPX Energy Rocky Mountain, LLC