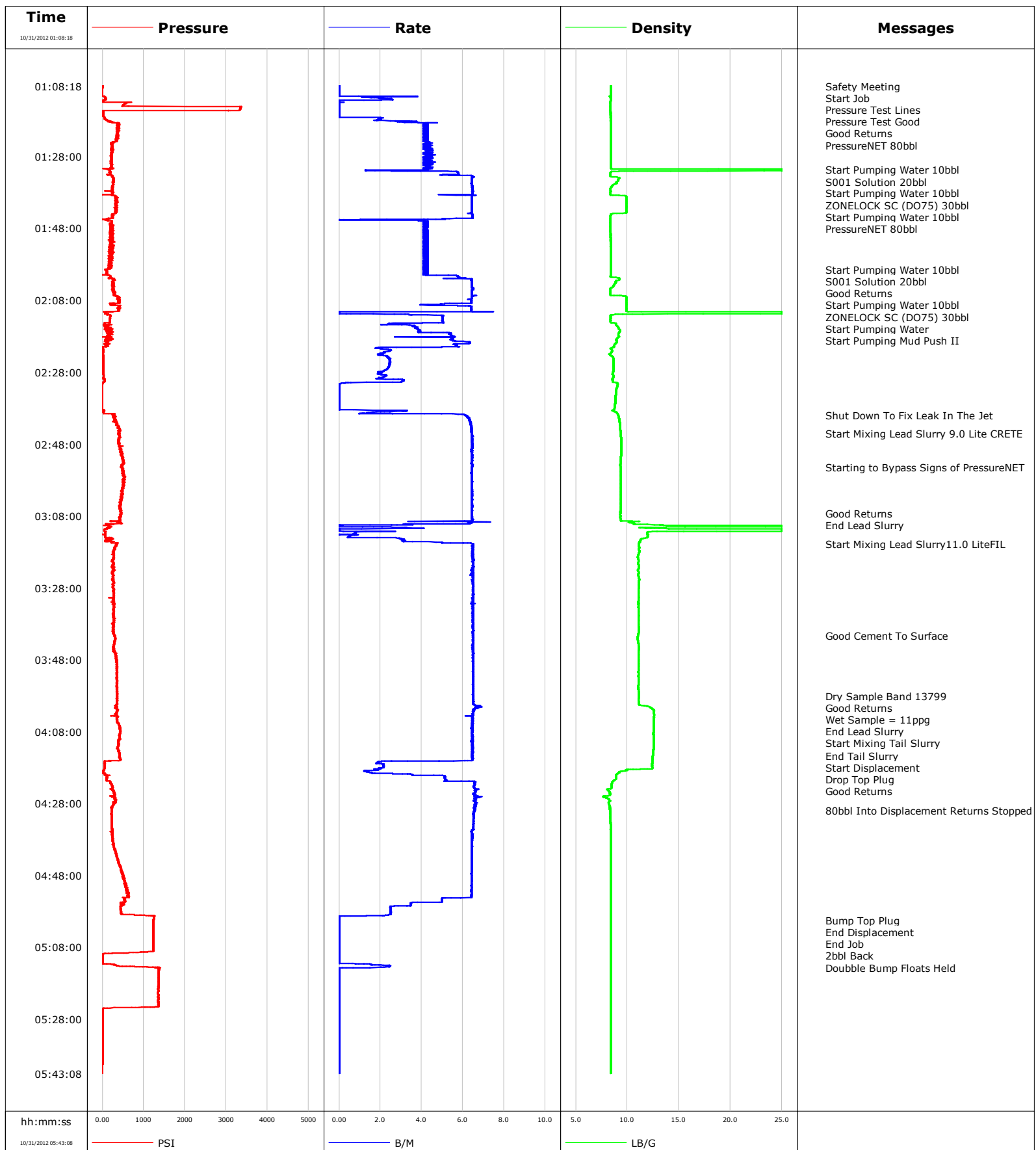


Well SG 8512D-24L
Field Grand Vall
Engineer
Country United States

Client Encana
SIR No. C8FL-00237
Job Type 9 5/8 Surface
Job Date 10-31-2012



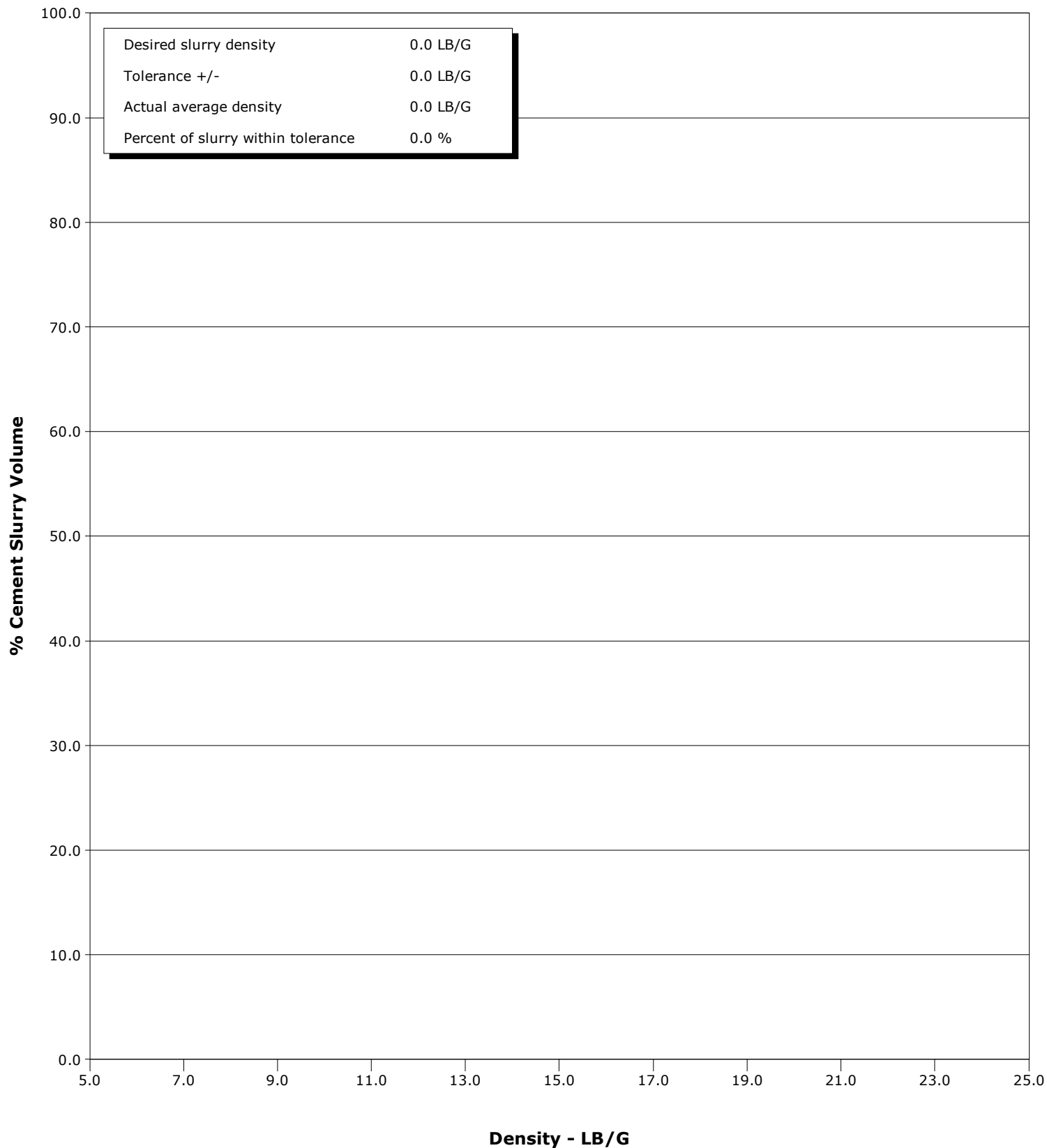
Schlumberger

Cementing Qa/Qc Density Report

Well SG 8512D-24L
Field Grand Vall
Engineer
Country United States

Client Encana
SIR No. C8FL-00237
Job Type 9 5/8 Surface
Job Date 10-31-2012

- 07/26/1972 18:49:04 to 07/26/1972 18:10:24



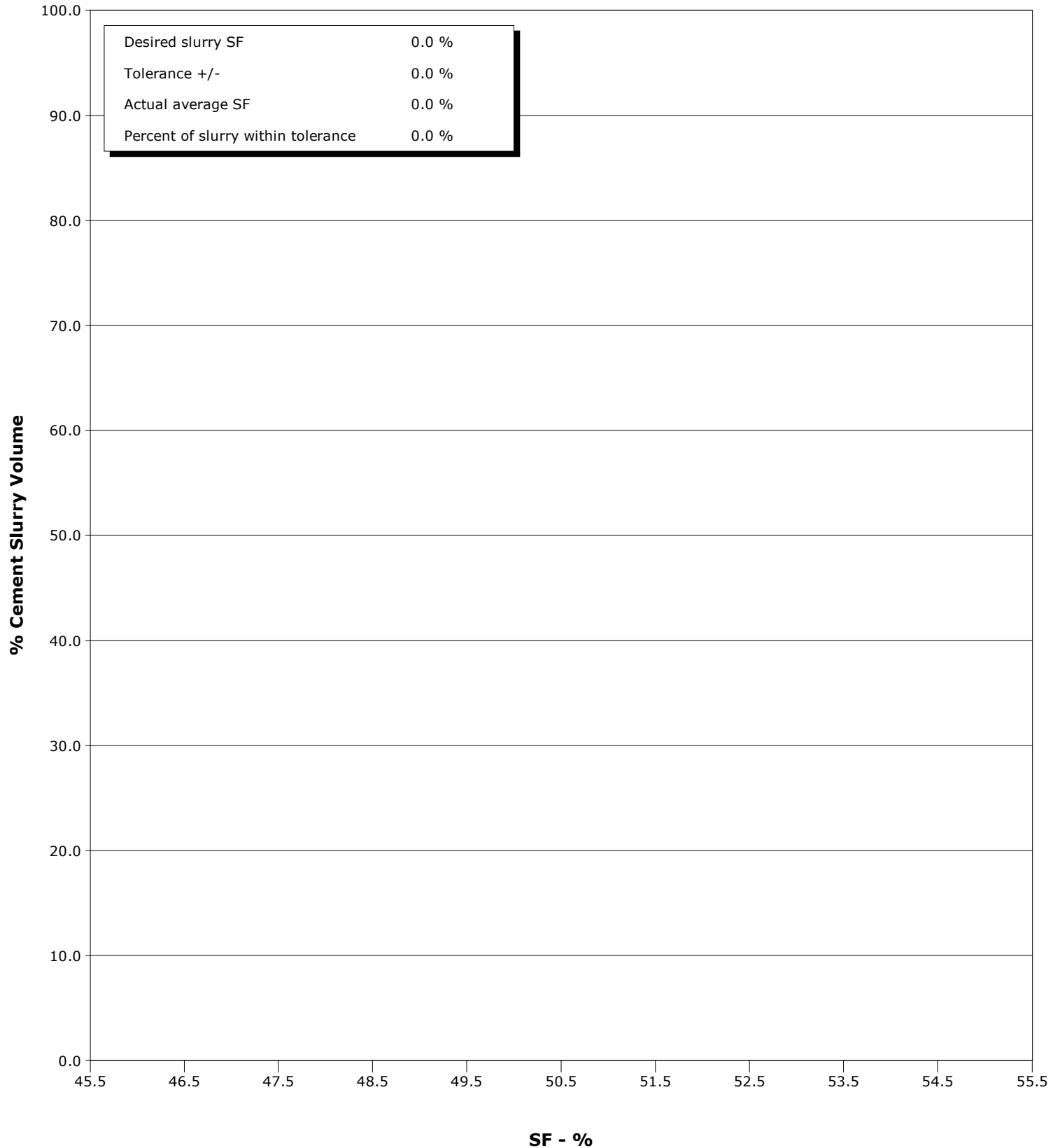


Cementing Qa/Qc SFM Report

Well SG 8512D-24L
Field Grand Vall
Engineer
Country United States

Client Encana
SIR No. C8FL-00237
Job Type 9 5/8 Surface
Job Date 10-31-2012

- 07/26/1972 18:49:04 to 07/26/1972 18:10:24



Page 1 of 4

Well SG 8512D-24L SG 8512D-24 L			Field Grand Vall		Job Start Oct/31/2012	Customer Encana	Job Number C8FL-00237
Date	Time 24-hr clock	Treating Pressure PSI	Flow Rate B/M	Density LB/G	Volume BBL	Message	
10/31/2012	01:37:13					Start Pumping Water 10bbl	
10/31/2012	01:37:13	247	6.5	8.37	95.1		
10/31/2012	01:37:22	242	6.5	8.38	96.1		
10/31/2012	01:39:25					ZONELOCK SC (DO75) 30bbl	
10/31/2012	01:39:25	339	6.4	9.90	109.3		
10/31/2012	01:42:22	336	6.4	9.89	128.2		
10/31/2012	01:43:38					Start Pumping Water 10bbl	
10/31/2012	01:43:38	321	6.4	9.89	136.4		
10/31/2012	01:45:56					PressureNET 80bbl	
10/31/2012	01:45:56	219	4.1	8.38	149.0		
10/31/2012	01:47:22	215	4.3	8.38	155.1		
10/31/2012	01:52:22	233	4.1	8.38	176.2		
10/31/2012	01:57:22	182	4.2	8.38	197.4		
10/31/2012	01:59:26					Start Pumping Water 10bbl	
10/31/2012	01:59:26	86	4.3	8.38	206.1		
10/31/2012	02:02:00					S001 Solution 20bbl	
10/31/2012	02:02:00	259	6.3	9.20	218.4		
10/31/2012	02:02:22	294	6.4	9.19	220.7		
10/31/2012	02:03:14					Good Returns	
10/31/2012	02:03:14	282	6.4	8.85	226.3		
10/31/2012	02:05:01					Start Pumping Water 10bbl	
10/31/2012	02:05:01	255	6.5	8.36	237.8		
10/31/2012	02:06:45					ZONELOCK SC (DO75) 30bbl	
10/31/2012	02:06:45	306	6.6	9.27	249.0		
10/31/2012	02:07:17					Start Pumping Water	
10/31/2012	02:07:17	418	6.4	9.90	252.4		
10/31/2012	02:07:22	426	6.4	9.90	253.0		
10/31/2012	02:10:27					Start Pumping Mud Push II	
10/31/2012	02:10:27	415	6.4	9.90	271.6		
10/31/2012	02:12:22	188	5.1	8.38	278.8		
10/31/2012	02:17:22	138	5.4	9.13	300.1		
10/31/2012	02:22:22	15	2.2	8.48	323.7		
10/31/2012	02:27:22	18	2.3	8.65	335.5		
10/31/2012	02:32:22	-7	0.0	8.98	343.7		
10/31/2012	02:37:22	-7	0.0	8.80	343.7		
10/31/2012	02:39:59					Shut Down To Fix Leak In The Jet	
10/31/2012	02:39:59	296	6.1	9.10	348.3		
10/31/2012	02:42:22	355	6.4	9.27	363.3		
10/31/2012	02:44:59					Start Mixing Lead Slurry 9.0 Lite CRETE	
10/31/2012	02:44:59	412	6.4	9.36	380.1		
10/31/2012	02:47:22	394	6.5	9.42	395.5		
10/31/2012	02:52:22	494	6.4	9.36	427.7		
10/31/2012	02:54:28					Starting to Bypass Signs of PressureNET	
10/31/2012	02:54:28	441	6.4	9.35	441.2		
10/31/2012	02:57:22	525	6.4	9.35	459.9		
10/31/2012	03:02:22	477	6.4	9.35	492.1		
10/31/2012	03:07:14					Good Returns	
10/31/2012	03:07:14	464	6.4	9.33	523.5		
10/31/2012	03:07:22	464	6.5	9.34	524.3		
10/31/2012	03:08:21					End Lead Slurry	
10/31/2012	03:08:21	414	6.5	9.32	530.7		
10/31/2012	03:12:22	70	1.0	12.27	545.2		
10/31/2012	03:15:41					Start Mixing Lead Slurry11.0 LiteFIL	
10/31/2012	03:15:41	336	6.5	11.13	552.2		

Well SG 8512D-24L SG 8512D-24 L			Field Grand Vall		Job Start Oct/31/2012	Customer Encana	Job Number C8FL-00237
Date	Time 24-hr clock	Treating Pressure PSI	Flow Rate B/M	Density LB/G	Volume BBL	Message	
10/31/2012	03:22:22	239	6.4	11.12	595.5		
10/31/2012	03:27:22	270	6.5	11.11	627.9		
10/31/2012	03:32:22	287	6.5	11.05	660.4		
10/31/2012	03:37:22	273	6.5	11.06	692.8		
10/31/2012	03:41:21					Good Cement To Surface	
10/31/2012	03:41:21	285	6.5	11.02	718.6		
10/31/2012	03:42:22	308	6.5	11.00	725.2		
10/31/2012	03:47:22	340	6.5	11.07	757.7		
10/31/2012	03:52:22	349	6.5	11.05	790.1		
10/31/2012	03:57:22	360	6.5	11.12	822.6		
10/31/2012	03:58:00					Dry Sample Band 13799	
10/31/2012	03:58:00	355	6.5	11.11	826.7		
10/31/2012	03:59:06					Good Returns	
10/31/2012	03:59:06	365	6.5	11.09	833.9		
10/31/2012	03:59:33					Wet Sample = 11ppg	
10/31/2012	03:59:33	356	6.5	11.09	836.8		
10/31/2012	03:59:59					End Lead Slurry	
10/31/2012	03:59:59	352	6.5	11.10	839.6		
10/31/2012	04:02:22	347	6.5	12.58	855.4		
10/31/2012	04:03:01					Start Mixing Tail Slurry	
10/31/2012	04:03:01	322	6.5	12.56	859.6		
10/31/2012	04:07:22	431	6.5	12.54	887.7		
10/31/2012	04:12:22	375	6.5	12.55	920.0		
10/31/2012	04:14:47					End Tail Slurry	
10/31/2012	04:14:47	413	6.5	12.47	935.6		
10/31/2012	04:14:49					Start Displacement	
10/31/2012	04:14:49	413	6.5	12.46	935.8		
10/31/2012	04:14:53					Drop Top Plug	
10/31/2012	04:14:53	412	6.4	12.46	936.2		
10/31/2012	04:14:58					Good Returns	
10/31/2012	04:14:58	396	6.5	12.45	936.8		
10/31/2012	04:17:22	55	2.2	12.38	947.1		
10/31/2012	04:22:22	199	6.6	8.50	964.8		
10/31/2012	04:27:22	313	6.6	8.31	997.8		
10/31/2012	04:30:00					80bbl Into Displacement Returns Stopped	
10/31/2012	04:30:00	222	6.6	8.33	1015.2		
10/31/2012	04:32:22	223	6.5	8.37	1030.6		
10/31/2012	04:37:22	238	6.5	8.39	1063.1		
10/31/2012	04:47:22	500	6.4	8.39	1127.4		
10/31/2012	04:52:22	623	6.4	8.39	1159.5		
10/31/2012	04:57:22	445	2.5	8.39	1183.6		
10/31/2012	05:00:30					Bump Top Plug	
10/31/2012	05:00:30	1238	0.0	8.39	1188.4		
10/31/2012	05:00:31					End Displacement	
10/31/2012	05:00:31	1238	0.0	8.39	1188.4		
10/31/2012	05:02:22	1231	0.0	8.39	1188.4		
10/31/2012	05:07:22	1229	0.0	8.39	1188.4		
10/31/2012	05:12:22	3	0.0	8.39	1188.4		
10/31/2012	05:17:22	1359	0.0	8.39	1190.7		
10/31/2012	05:22:22	1357	0.0	8.39	1190.7		
10/31/2012	05:27:22	2	0.0	8.39	1190.7		
10/31/2012	05:32:22	3	0.0	8.39	1190.7		
10/31/2012	05:37:22	3	0.0	8.39	1190.7		
10/31/2012	05:42:22	-8	0.0	8.39	1190.7		

Well SG 8512D-24L SG 8512D-24 L			Field Grand Vall		Job Start Oct/31/2012		Customer Encana		Job Number C8FL-00237	
Date	Time 24-hr clock	Treating Pressure PSI		Flow Rate B/M	Density LB/G	Volume BBL		Message		
10/31/2012	05:43:30							2bbl Back		

Post Job Summary

Average Pump Rates, bbl/min					Volume of Fluid Injected, bbl						
Slurry 5.5	N2	Mud 0.0	Maximum Rate 7.5		Total Slurry 1188.4	Mud 0.0	Spacer 89.6	N2			
Treating Pressure Summary, psi					Breakdown Fluid						
Maximum 3369	Final 1229	Average 324	Bump Plug to 1230	Breakdown	Type		Volume 1157.5 bbl	Density			
Avg. N2 Percent		Designed Slurry Volume 559.0 bbl		Displacement 252.6 bbl		Mix Water Temp 65 degF		Cement Circulated to Surface?	<input checked="" type="checkbox"/>	Volume 300.0 bbl	
								Washed Thru Perfs	<input type="checkbox"/>	To	
Customer or Authorized Representative Randy Burke				Schlumberger Supervisor Travis Willardson/Cole Fairbrook				Circulation Lost	<input type="checkbox"/>	Job Completed	<input checked="" type="checkbox"/>
								-		-	