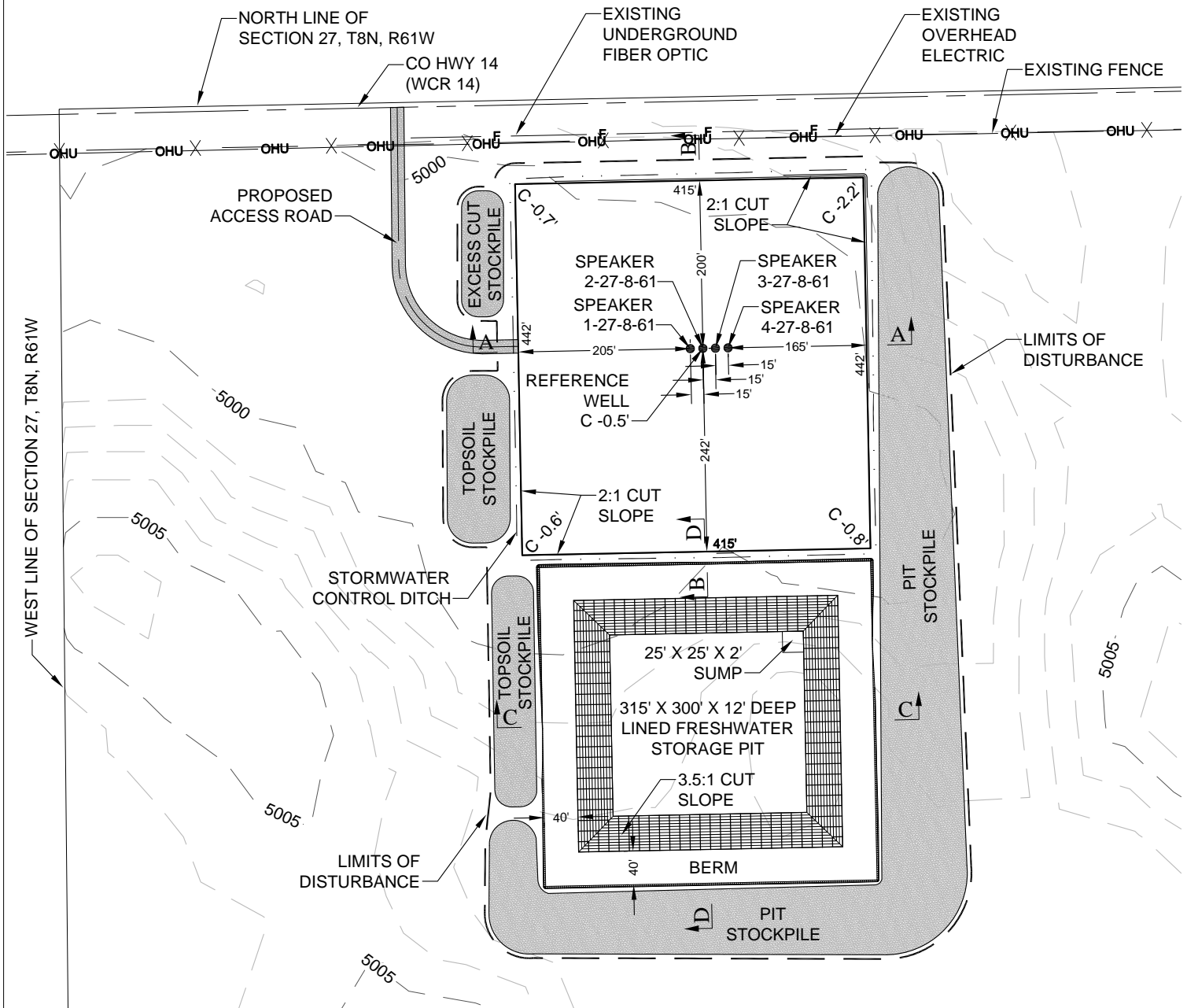
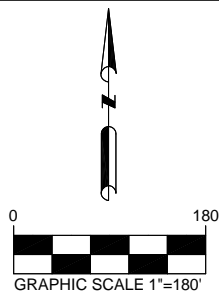


**SPEAKER 27-8-61  
CARRIZO NIOBRARA LLC  
PAD LAYOUT**



**NOTES:**

1. A COMPLETE UTILITIES LOCATION IS RECOMMENDED BEFORE CONSTRUCTION.
2. EARTHWORK QUANTITIES ARE APPROXIMATE & FOR INFORMATION ONLY. 6" OF TOPSOIL HAS BEEN SUBTRACTED FROM EXISTING SURFACE PRIOR TO PERFORMING EARTHWORK CALCULATION.
3. STOCKPILES ARE ASSUMED TO BE 10' IN HEIGHT WITH 2:1 SIDE SLOPES.



**SITE QUANTITIES**

FINISHED GRADE ELEVATION = 4998.80'  
 CUT SLOPES = 2:1  
 FILL SLOPES = 2:1  
 TOTAL CUT FOR PAD = 1,530 CY  
 TOTAL FILL FOR PAD (+10% SHRINKAGE) = 193 CY  
 NET EXCESS MATERIAL = 1,337 CY  
 PIT STOCKPILE = 31,901 CY  
 TOPSOIL FROM GRADED AREA = 6,312 CY  
 TOTAL DISTURBANCE AREA = 12.52 ACRES

PREPARED BY:



FIELD DATE:

06-11-13

DRAWING DATE:

07-24-13

BY:

CPO

CHECKED BY:

JLF

PAD NAME:

SPEAKER 27-8-61

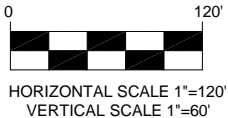
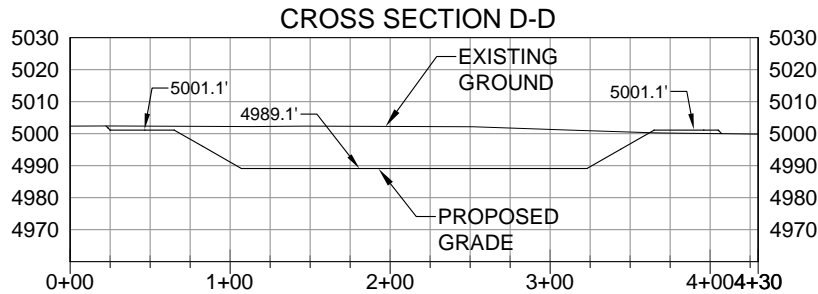
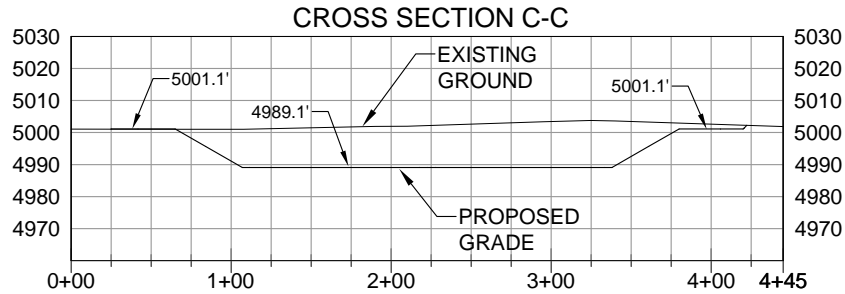
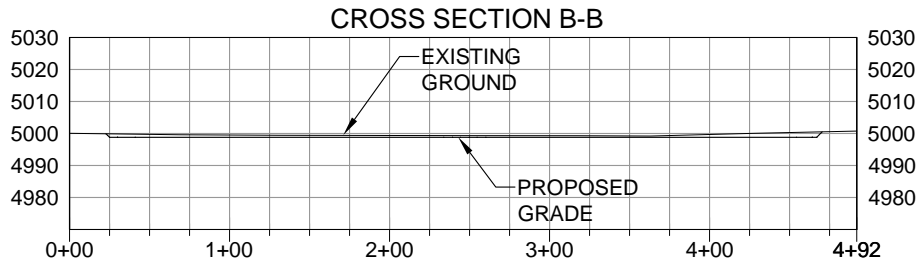
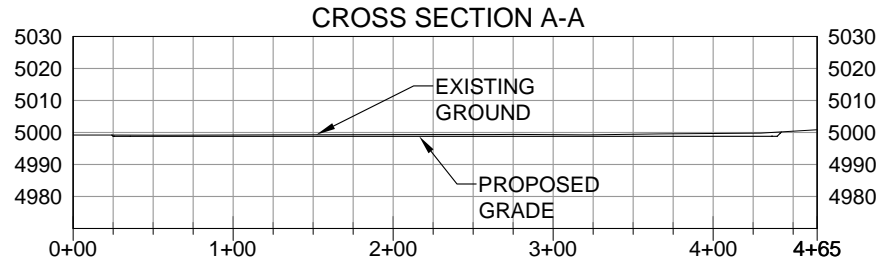
SURFACE LOCATION:

NW 1/4, NW 1/4, SEC. 27, T8N, R61W, 6TH P.M.  
WELD COUNTY, COLORADO

PREPARED FOR:

CARRIZO  
NIOBRARA LLC

SPEAKER 27-8-61  
CARRIZO NIOBRARA LLC  
CROSS SECTIONS



**NOTE:**

1. A COMPLETE UTILITIES LOCATION IS RECOMMENDED BEFORE CONSTRUCTION.

PREPARED BY:



FIELD DATE:

06-11-13

DRAWING DATE:

07-24-13

BY:

CPO

CHECKED BY:

JLF

PAD NAME:

SPEAKER 27-8-61

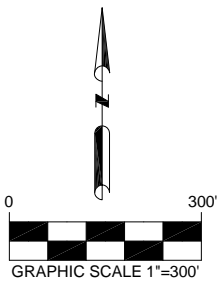
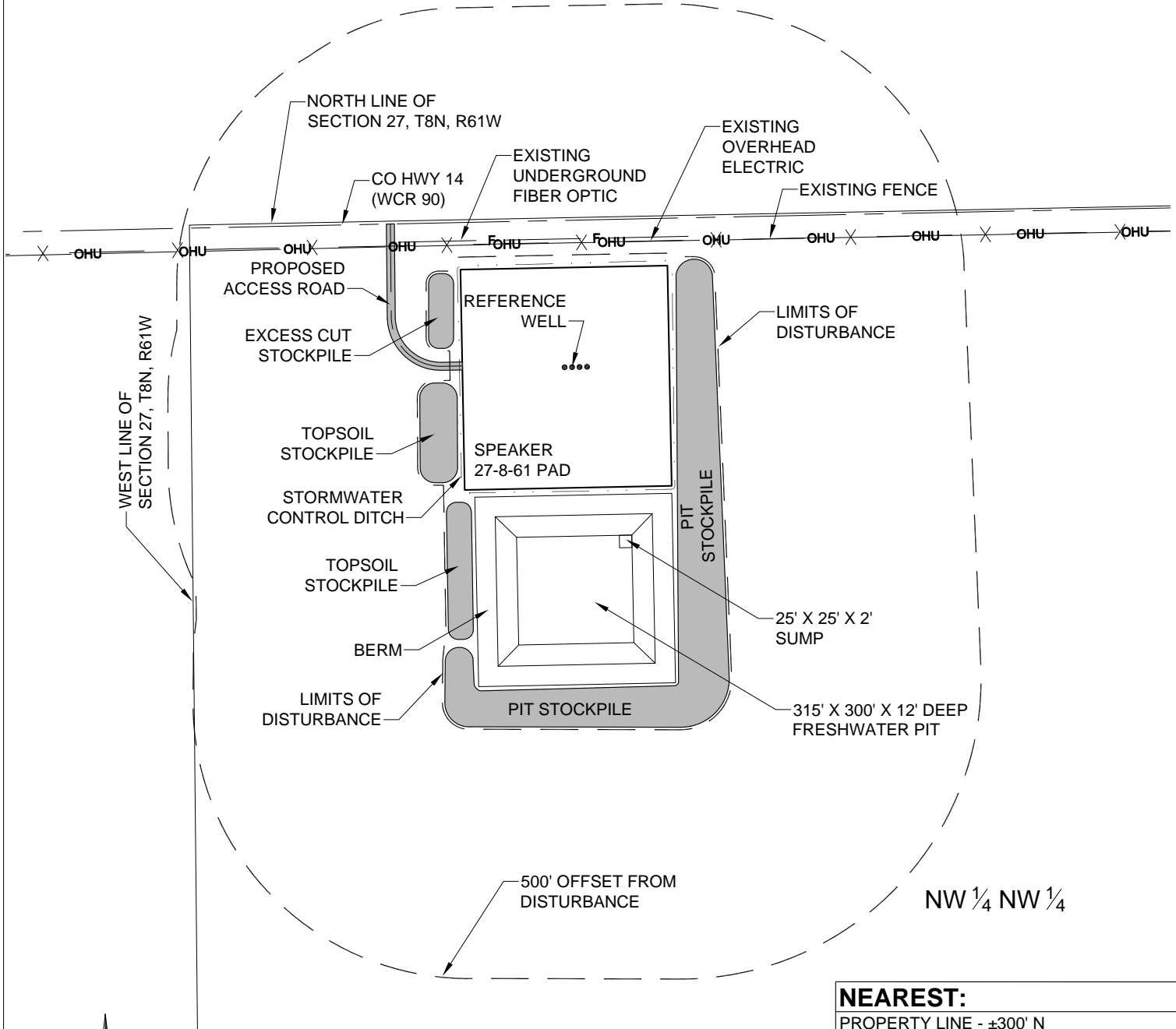
SURFACE LOCATION:

NW 1/4, NW 1/4, SEC. 27, T8N, R61W, 6TH P.M.  
WELD COUNTY, COLORADO

PREPARED FOR:

CARRIZO  
NIOBRARA LLC

**SPEAKER 27-8-61  
CARRIZO NIOBRARA LLC  
LOCATION DRAWING**



**NEAREST:**

PROPERTY LINE - ±300' N
PUBLIC ROAD - (CO HWY 14) ±302' N
BUILDING - (HOUSE) ±2522' NE
RAILROAD - >5280' NE
POWERLINE - ±254' N
SURFACE WATER - (STREAM) >5280' NW
WATER WELL - ±2437' NE SWL = 240'
PERMIT: 126281, RECEIPT: 0468958
FENCE - ±250' N
PROPOSED ACCESS ROAD - ±220' W

**REFERENCE WELL**

LATITUDE: 40.639215°
LONGITUDE: 104.198884°
FOOTAGE: 300' FNL & 764' FWL
GROUND ELEVATION: 4999'
PDOP: 2.12
GPS OPERATOR: BEN HARDENBERGH
SURFACE USE: RANGELAND

PREPARED BY:



FIELD DATE:

06-11-13

DRAWING DATE:

07-24-13

BY:

CPO

CHECKED BY:

JLF

PAD NAME:

SPEAKER 27-8-61

SURFACE LOCATION:

NW 1/4, NW 1/4, SEC. 27, T8N, R61W, 6TH P.M.  
WELD COUNTY, COLORADO

PREPARED FOR:

CARRIZO  
NIOBRARA LLC