



J-W WIRELINE COMPANY

**CEMENT BOND
GAMMA RAY VDL
COLLAR CORRELATION LOG**

Company BEREN CORP.
Well MOYER 13-29
Field BORDER
County WELD State COLORADO

Location: 654 FWL & 779' FSL
API #: 05-123-07029-0000

Other Services

Company BERELI CORP.
Well MOYER 13-29
Field BORDER
County WELD
State COLORADO

Permanent Datum SEC 29 TWP 12N RGE 56W
Log Measured From GL KB Elevation 5053
Drilling Measured From KB Elevation 5062
GL 5061
GL 5053

Date SEPTEMBER 06, 2012

Run Number	ONE					
Depth Driller	6600					
Depth Logger	731					
Bottom Logged Interval	726					
Top Log Interval	SURFACE					
Open Hole Size	7 7/8"					
Type Fluid	WATER					
Density / Viscosity	---					
Max. Recorded Temp.	---					
Estimated Cement Top	205					
Time Well Ready	---					
Time Logger on Bottom	---					
Equipment Number	2400					
Location	STERLING CO					
Recorded By	PHIL LOPEZ					
Witnessed By	ED HAYES					
Run Number	Bit	From	To	Size	Tubing Record From	To
Casing Record	Size			Wgt/Ft	Top	Bottom
Surface String	8 5/8"			24#	SURFACE	369
Prot. String						
Production String	5.50"			14# & 15#	SURFACE	6591
Liner						

*** Fold Here ***

All interpretations are opinions based on inferences from electrical or other measurements and we cannot and do not guarantee the accuracy or correctness of any interpretation, and we shall not, except in the case of gross or willful negligence on our part, be liable or responsible for any loss, costs, damages, or expenses incurred or sustained by anyone resulting from any interpretation made by any of our officers, agents or employees. These interpretations are also subject to our general terms and conditions set out in our current Price Schedule

Comments

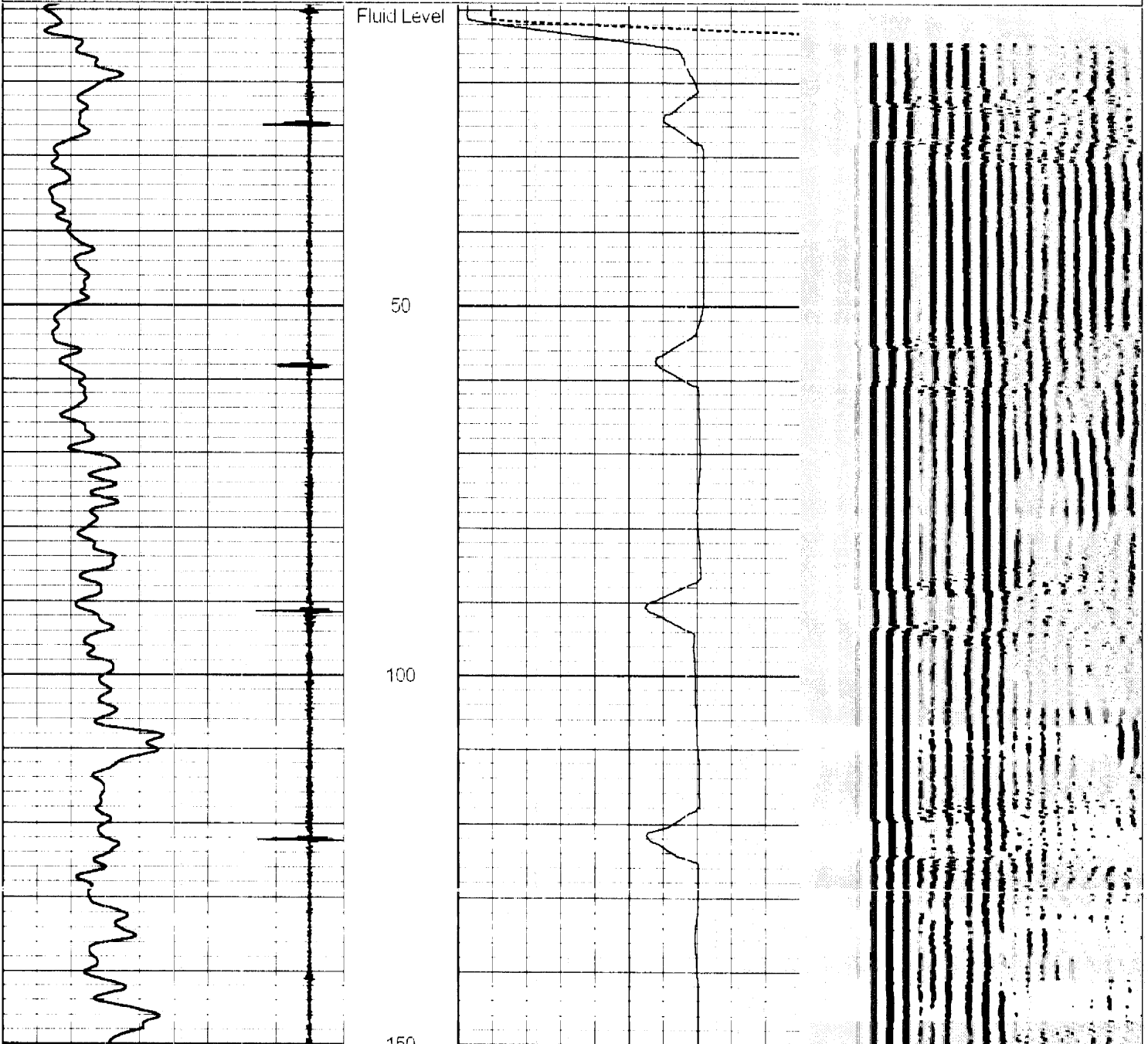
THANK YOU FOR CHOOSING J-W WIRELINE
LOG RAN TO VERIFY CEMENT TOP INTO SURFACE PIPE
LOG NOT ON DEPTH

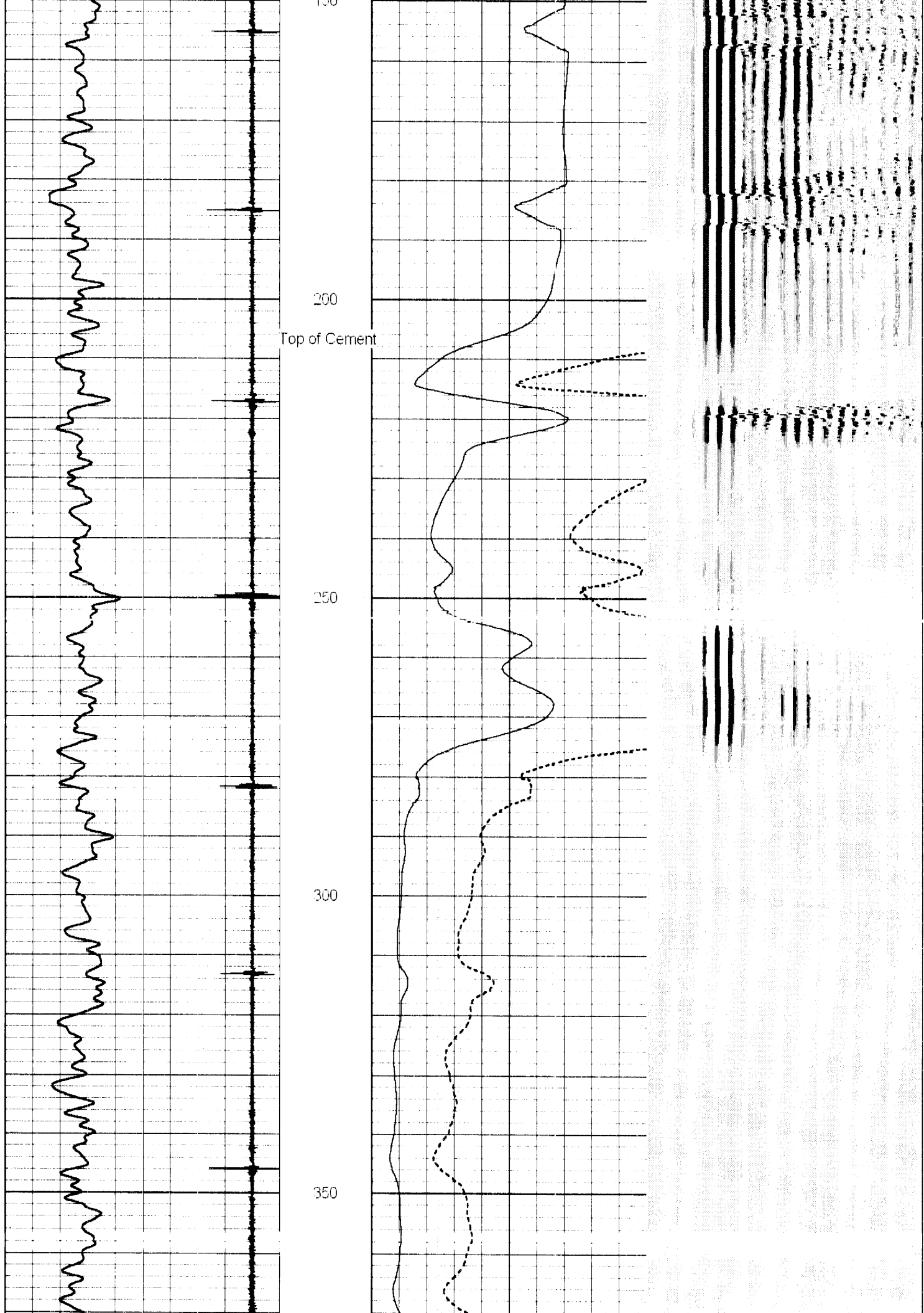
Sensor	Offset (ft)	Schematic	Description	Len (ft)	OD (in)	Wt (lb)	
CCL	13.25		CCL-GR_1_3/8 (001) 1 3/8 titan ccl	1.00	1.38	11.00	
GR	11.49		GR-s_t001 (t001)	2.52	1.69	30.00	
WVF5	7.34						
WVF3	6.34			CBL-3_5 (001)	7.23	2.44	127.00
				CENT-A (1)	3.00	1.69	10.00

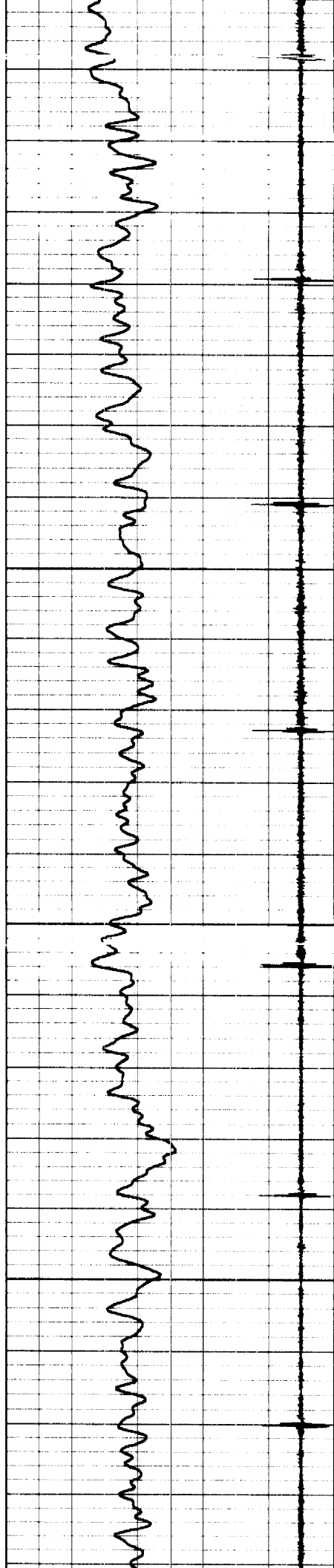
Dataset: moyer 13-29 log2.db: field/well/run1/pass3
 Total Length: 13.75 ft
 Total Weight: 178.00 lb
 O.D.: 2.44 in

Database File: moyer 13-29 log2.db
 Dataset Pathname: pass3
 Presentation Format: cblx
 Dataset Creation: Thu Sep 06 07:13:35 2012 by Log SCH 111116
 Charted by: Depth in Feet scaled 1:240

0	GR (GAPI)	200	0	Amplitude (mV)	100 200	Variable Density	1200
-9	CCL	1	0	Amplified Amplitude (mV)	30		





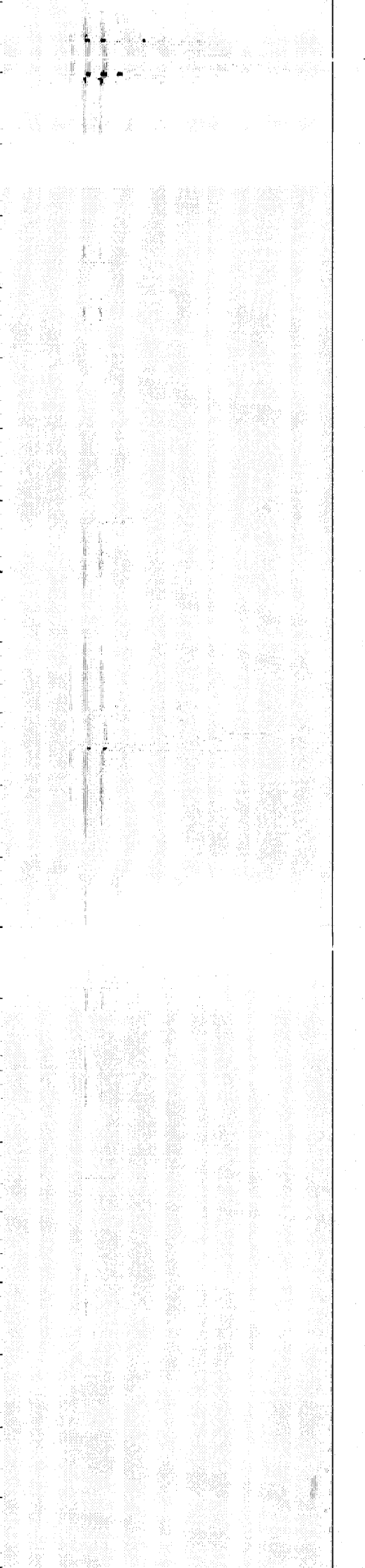
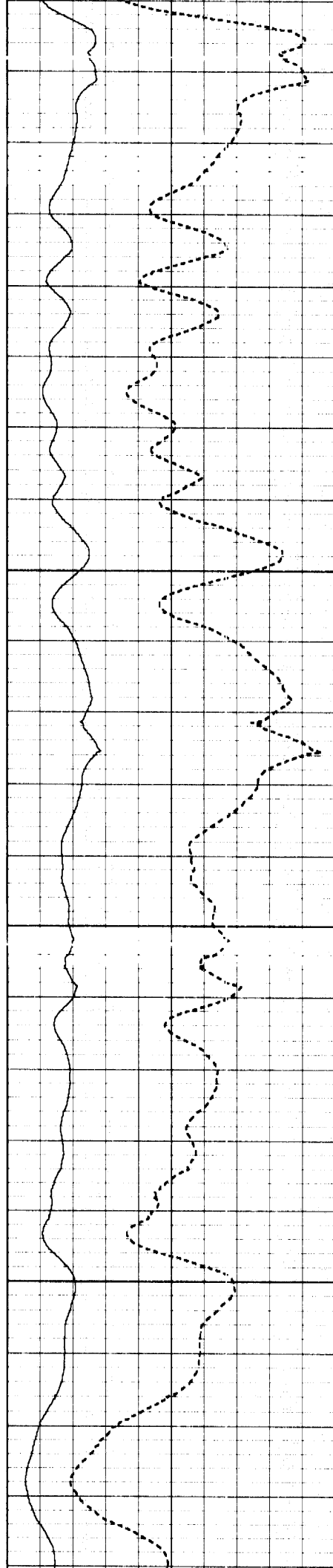


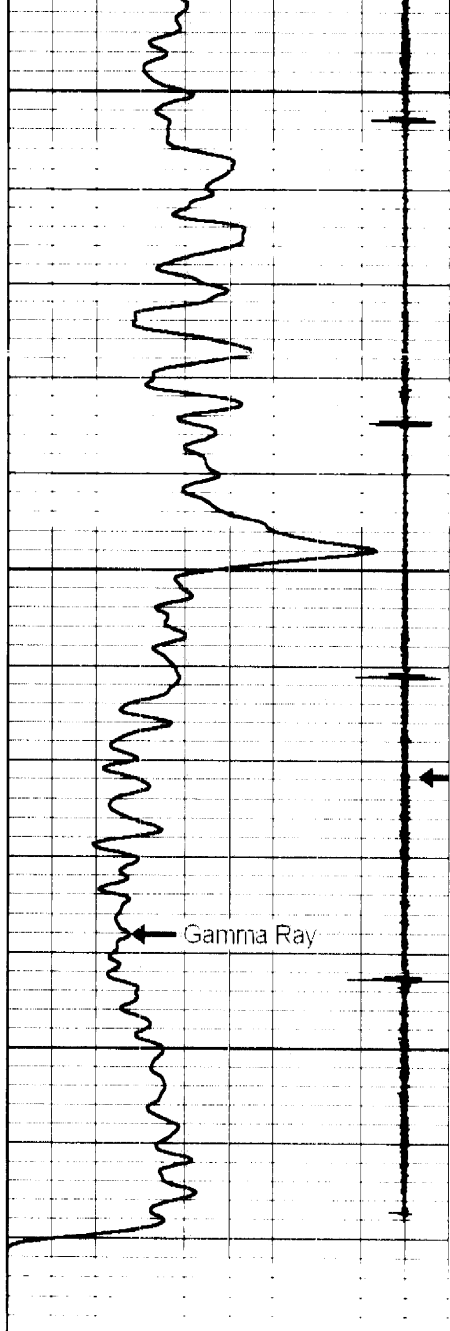
400

450

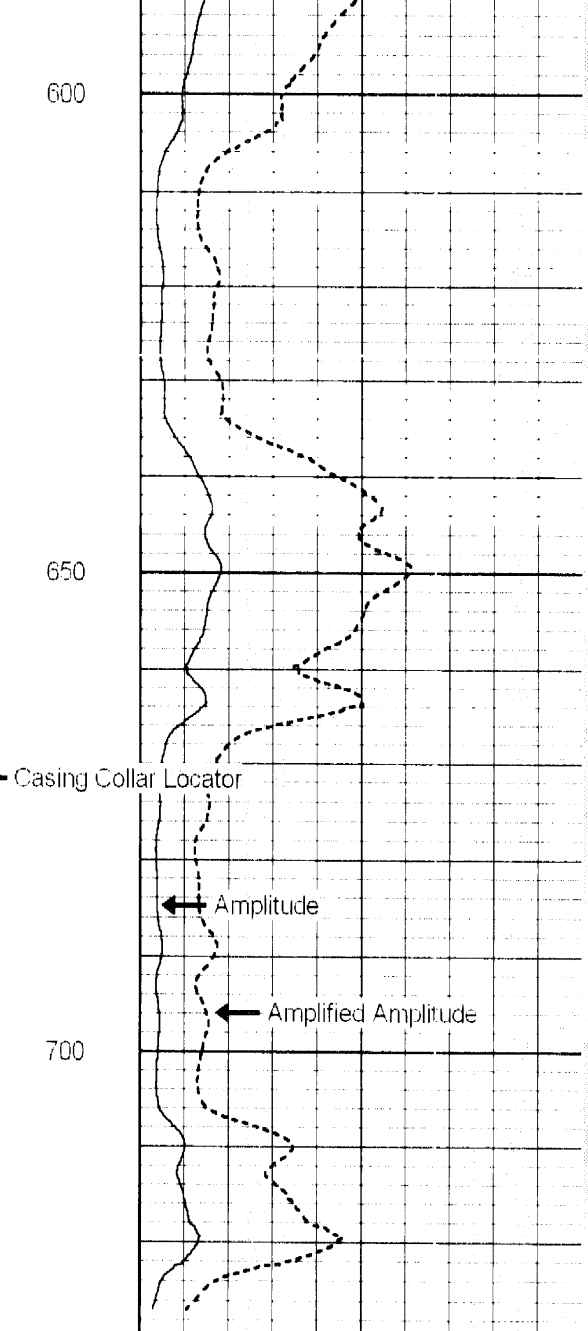
500

550





0 GR (GAPI) 200
 -9 CCL 1



0 Amplitude (mV) 100 200
 0 Amplified Amplitude (mV) 30

Variable Density 1200