

T10N, R58W, 6th P.M.

WHITING OIL & GAS CORP.

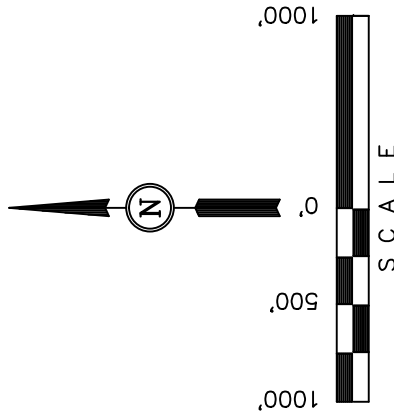
Well location, RAZOR #11E-1404B (SURFACE LOCATION), located as shown in the SW 1/4 NW 1/4 of Section 11, T10N, R58W, 6th P.M., Weld County, Colorado.

BASIS OF ELEVATION

SPOT ELEVATION LOCATED AT THE NORTHEAST CORNER OF SECTION 15, T9N, R58W, 6th P.M. TAKEN FROM THE GATEHOOK SPRING, QUADRANGLE, COLORADO, WELD COUNTY, 7.5 MINUTE QUAD (TOPOGRAPHIC MAP) PUBLISHED BY THE UNITED STATES DEPARTMENT OF THE INTERIOR, GEOLOGICAL SURVEY. SAID ELEVATION IS MARKED AS BEING 4679 FEET.

BASIS OF BEARINGS

BASIS OF BEARINGS IS A G.P.S. OBSERVATION.



CERTIFICATE OF RECORDING
THIS IS TO CERTIFY THAT THE ABOVE PLAT WAS PREPARED FROM FIELD NOTES OF ACTUAL SURVEY MADE BY ME OR UNDER MY SUPERVISION AND THAT THE SAME IS TRUE AND CORRECT TO THE BEST OF MY KNOWLEDGE AND BELIEF.
REGISTERED LAND SURVEYOR
REGISTRATION NO. 28285
STATE OF COLORADO
J. Paul 28285
RECEIVED
OFFICE OF THE CLERK
COUNTY OF WELD
JAN 27 2013

REVISED: 07-03-13

UINTAH ENGINEERING & LAND SURVEYING
85 SOUTH 200 EAST - VERNAL, UTAH 84078
(435) 789-1017

SCALE
1" = 1000'

DATE SURVEYED:
05-14-13

DATE DRAWN:
05-17-13

PARTY

REFERENCES

G.L.O. PLAT

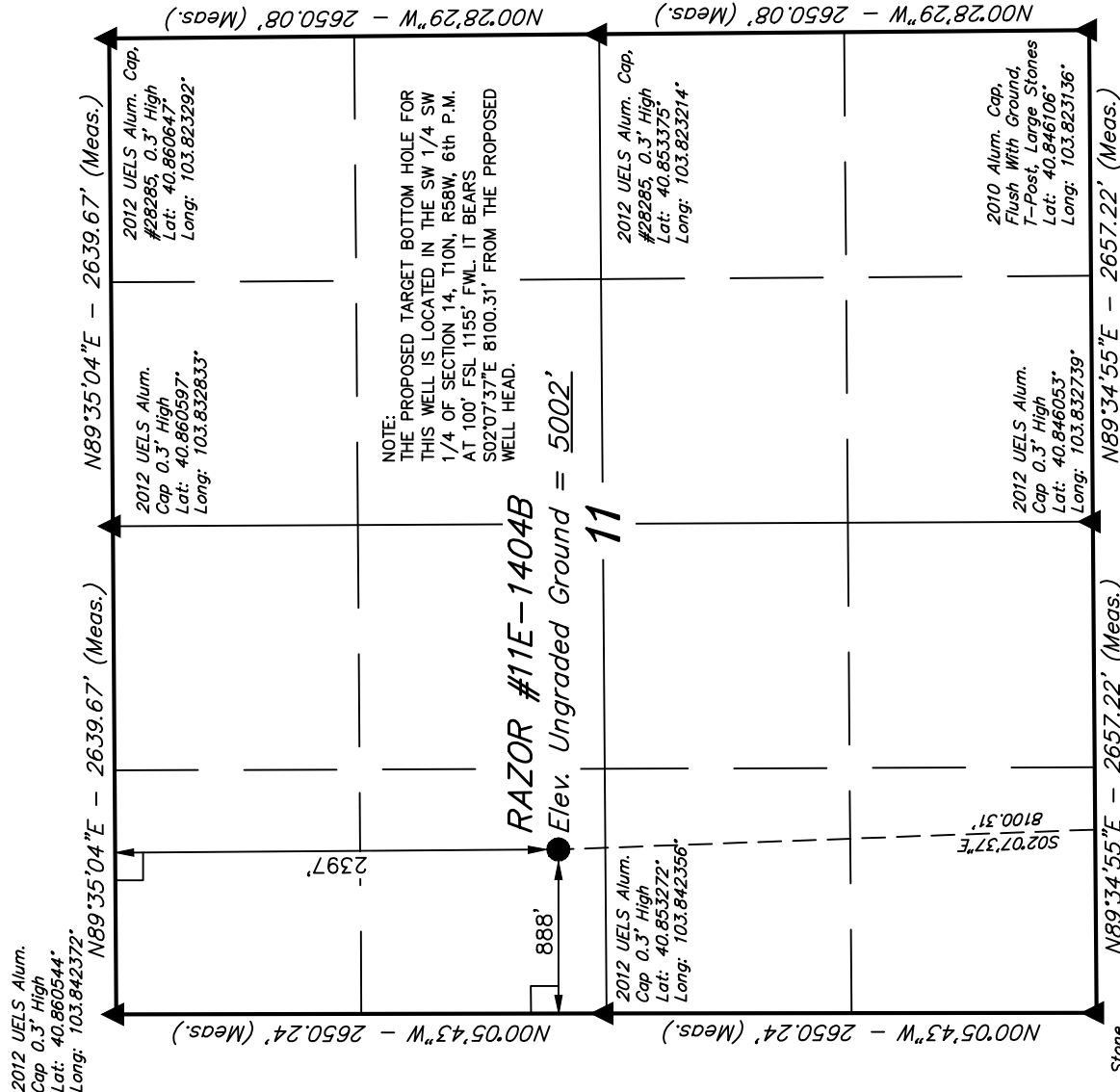
D.N. G.W. B.D.H.

WEATHER

WARM

FILE

WHITING OIL & GAS CORP.



LEGEND:

└─ 90° SYMBOL

● = PROPOSED WELL HEAD.

▲ = SECTION CORNERS LOCATED.

Target Bottom Hole

PDOP = 1.3

NAD 83 (SURFACE LOCATION)	
LATITUDE = 40°51'14.34"	(40.853983)
LONGITUDE = 103°50'20.94"	(103.839150)
NAD 27 (SURFACE LOCATION)	
LATITUDE = 40°51'14.40"	(40.854000)
LONGITUDE = 103°50'19.13"	(103.838647)

T10N, R58W, 6th P.M.

Surface Location

Stone
Lat: 40.846000°
Long: 103.842342°

N89°34'55"E - 2657.22' (Meas.)

N89°34'55"E - 2657.22' (Meas.)

2012 UELS Alum.
Cap 0.3' High
Lat: 40.846053°
Long: 103.832739°

2010 Alum. Cap,
Flush With Ground,
T-Post, Large Stones
Lat: 40.846106°
Long: 103.823136°

N00°19'00"W - 2642.29' (Meas.)

N00°29'00"W - 2702.18' (Meas.)

2012 UELS Alum.
Cap, 0.3' High
Lat: 40.838750°
Long: 103.842289°

14

NOTE:
THE PROPOSED TARGET BOTTOM HOLE
BEARS S02°07'37"E 8100.31' FROM THE
PROPOSED WELL HEAD WHICH IS LOCATED IN
THE SW 1/4 NW 1/4 OF SECTION 11, T10N,
R58W, 6th P.M. AT 2397' FNL 888' FWL.

RAZOR #11E-1404B
Target Bottom Hole

2012 UELS Alum.
Cap, 0.5' Below
Ground
Lat: 40.831497°
Long: 103.842233°

N89°59'11"W
666.23' (Meas.)
2012 UELS Alum.
Cap, 0.5' High,
Buried Stone
Lat: 40.831497°
Long: 103.832603°

N89°35'31"E - 2663.79' (Meas.)

Set Stone
Lat: 40.831547°
Long: 103.822978°

N00°29'09"W - 2602.93' (Meas.)

WHITING OIL & GAS CORP.

Well location, RAZOR #11E-1404B (TARGET
BOTTOM HOLE), located as shown in the SW 1/4
SW 1/4 of Section 14, T10N, R58W, 6th P.M.,
Weld County, Colorado.

BASIS OF ELEVATION

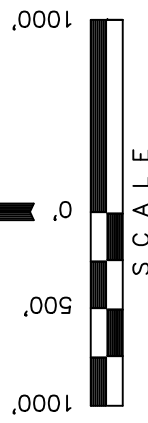
SPOT ELEVATION LOCATED AT THE NORTHEAST CORNER OF
SECTION 15, T9N, R58W, 6th P.M. TAKEN FROM THE
GATEHOOK SPRING, QUADRANGLE, COLORADO, WELD COUNTY,
7.5 MINUTE QUAD (TOPOGRAPHIC MAP) PUBLISHED BY THE
UNITED STATES DEPARTMENT OF THE INTERIOR, GEOLOGICAL
SURVEY. SAID ELEVATION IS MARKED AS BEING 4679 FEET.

BASIS OF BEARINGS

BASIS OF BEARINGS IS A G.P.S. OBSERVATION.



2010 UELS Alum. Cap,
0.2' High, Buried Stone
Lat: 40.838689°
Long: 103.823056°



S C A L E

CERTIFICATE OF REGISTRATION
THIS IS TO CERTIFY THAT THE ABOVE PLAT WAS PREPARED FROM
FIELD NOTES OF ACTUAL SURVEY MADE BY ME OR UNDER MY
SUPERVISION AND THAT THE SAME IS TRUE AND CORRECT TO THE
BEST OF MY KNOWLEDGE AND BELIEF.
REGISTERED LAND SURVEYOR
REGISTRATION NO. 28285
STATE OF COLORADO
JAN 14 2013
STATE OF COLORADO
JAN 14 2013
STATE OF COLORADO
JAN 14 2013

UINTAH ENGINEERING & LAND SURVEYING
85 SOUTH 200 EAST - VERNAL, UTAH 84078
(435) 789-1017

SCALE 1" = 1000'	DATE SURVEYED: 05-14-13	DATE DRAWN: 05-17-13
PARTY D.N. G.W. B.D.H.	REFERENCES G.L.O. PLAT	
WEATHER WARM	FILE	WHITING OIL & GAS CORP.

NAD 83 (TARGET BOTTOM HOLE) LATITUDE = 40°49'54.38" (40.831772) LONGITUDE = 103°50'17.03" (103.838064)
NAD 27 (TARGET BOTTOM HOLE) LATITUDE = 40°49'54.43" (40.831786) LONGITUDE = 103°50'15.22" (103.837561)

LEGEND:

- = 90° SYMBOL
- = PROPOSED WELL HEAD.
- ▲ = SECTION CORNERS LOCATED.