

T10N, R58W, 6th P.M.

WHITING OIL & GAS CORP.

Target Bottom Hole

Well location, RAZOR #261-2313A (SURFACE LOCATION), located as shown in the NE 1/4 SE 1/4 of Section 26, T10N, R58W, 6th P.M., Weld County, Colorado.

BASIS OF ELEVATION

SPOT ELEVATION LOCATED AT THE NORTHEAST CORNER OF SECTION 15, T9N, R58W, 6th P.M. TAKEN FROM THE GATEHOOK SPRING, QUADRANGLE, COLORADO, WELD COUNTY, 7.5 MINUTE QUAD (TOPOGRAPHIC MAP) PUBLISHED BY THE UNITED STATES DEPARTMENT OF THE INTERIOR, GEOLOGICAL SURVEY. SAID ELEVATION IS MARKED AS BEING 4679 FEET.

BASIS OF BEARINGS

BASIS OF BEARINGS IS A G.P.S. OBSERVATION.

S89°43'12"W - 2634.39' (Meas.)

2010 UELS Alum. Cap,
Flush W/Ground
PLS 28285
Lat: 40.816906°
Long: 103.841850°

S89°43'12"W - 2634.39' (Meas.)

2012 UELS Alum. Cap,
0.1' High, PLS 28285
Lat: 40.816942°
Long: 103.832336°

N00°55'36"W - 2648.12' (Meas.)

2012 UELS Alum. Cap,
Flush W/Ground,
PLS 28285
Lat: 40.809642°
Long: 103.841694°

26

RAZOR #261-2313A
Elev. Ungraded Ground = 4717'

N03°56'21"W
8302.26'

695'

N01°13'45"W - 2661.92' (Meas.)

2012 UELS Alum. Cap,
0.1' High, PLS 28285
Lat: 40.809672°
Long: 103.822617°

N01°13'45"W - 2661.92' (Meas.)

2012 Alum. Cap,
Flush W/Ground
Lat: 40.802372°
Long: 103.837975°

N89°59'08"W - 2648.64' (Meas.)

N89°59'08"W - 2648.64' (Meas.)

LEGEND:

— = 90° SYMBOL

● = PROPOSED WELL HEAD.

▲ = SECTION CORNERS LOCATED.

PDOP = 1.5

NAD 83 (SURFACE LOCATION)

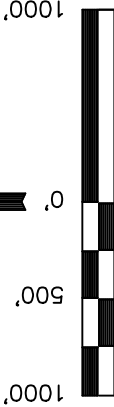
LATITUDE = 40°48'30.68" (40.808522)

LONGITUDE = 103°49'30.34" (103.825094)

NAD 27 (SURFACE LOCATION)

LATITUDE = 40°48'30.73" (40.808536)

LONGITUDE = 103°49'28.53" (103.824592)



SCALE

CERTIFICATE

THIS IS TO CERTIFY THAT THE ABOVE PLAT WAS PREPARED FROM FIELD NOTES OF ACTUAL SURVEYS MADE BY ME OR UNDER MY SUPERVISION AND THAT THE SAME ARE TRUE AND CORRECT TO THE BEST OF MY KNOWLEDGE AND BELIEF.

REVISOR: 07-18-13 A.D.
REGISTERED LAND SURVEYOR
STATE OF COLORADO
REGISTRATION NO. 17492
EXPIRATION DATE 09-18-13

UNTANH ENGINEERING & LAND SURVEYING

85 SOUTH 200 EAST - VERNAL, UTAH 84078

(435) 789-1017

SCALE 1" = 1000' DATE SURVEYED: 03-19-13 DATE DRAWN: 03-25-13

PARTY T.B. C.B. H.K.W. REFERENCES G.L.O. PLAT

WEATHER COLD FILE WHITING OIL & GAS CORP.

T10N, R58W, 6th P.M.

WHITING OIL & GAS CORP.

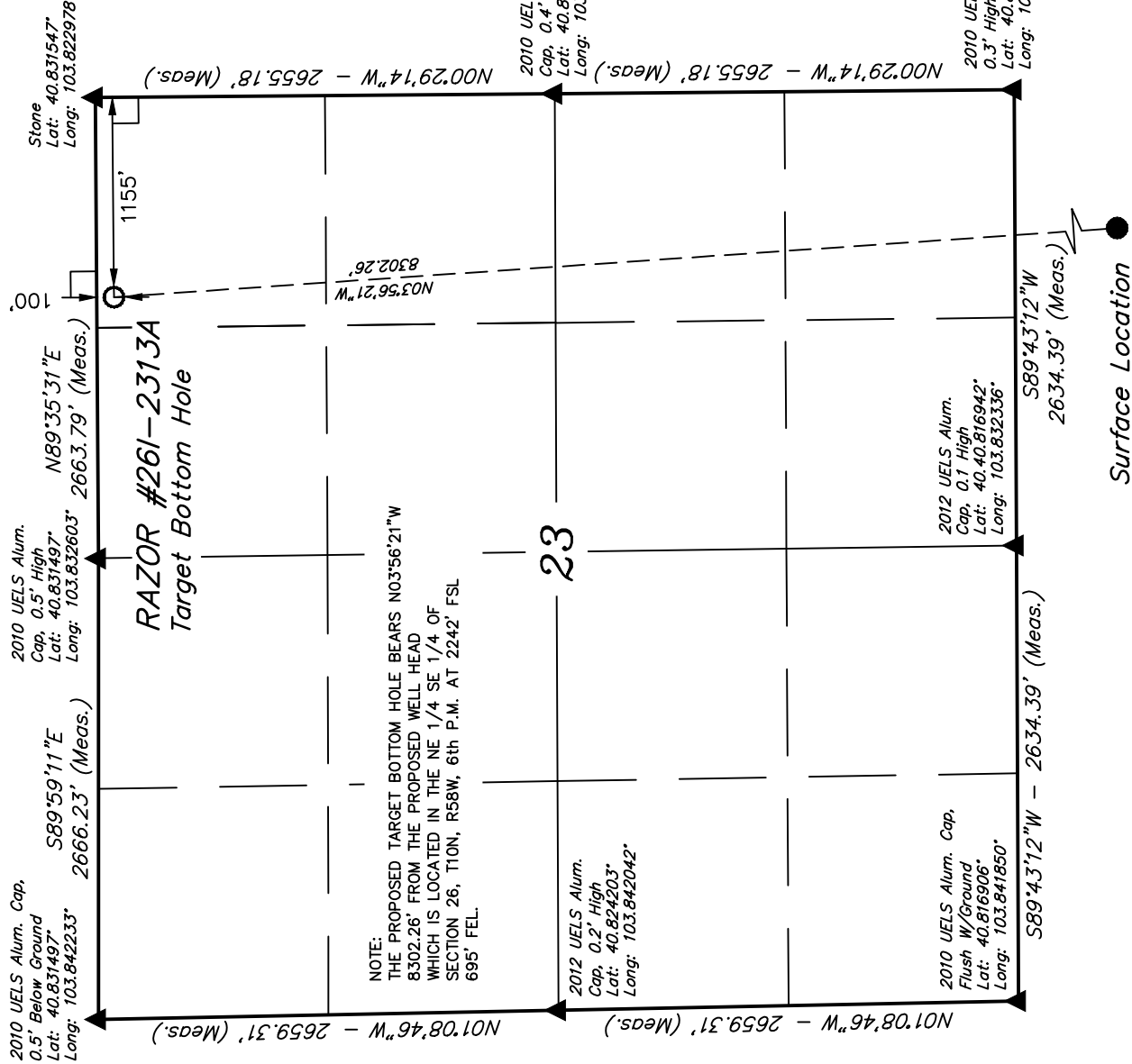
Well location, RAZOR #261-2313A (TARGET BOTTOM HOLE), located as shown in the NE 1/4 NE 1/4 of Section 23, T10N, R58W, 6th P.M., Weld County, Colorado.

BASIS OF ELEVATION

SPOT ELEVATION LOCATED AT THE NORTHEAST CORNER OF SECTION 15, T9N, R58W, 6th P.M. TAKEN FROM THE GATEHOOK SPRING, QUADRANGLE, COLORADO, WELD COUNTY, 7.5 MINUTE QUAD (TOPOGRAPHIC MAP) PUBLISHED BY THE UNITED STATES DEPARTMENT OF THE INTERIOR, GEOLOGICAL SURVEY. SAID ELEVATION IS MARKED AS BEING 4679 FEET.

BASIS OF BEARINGS

BASIS OF BEARINGS IS A G.P.S. OBSERVATION.

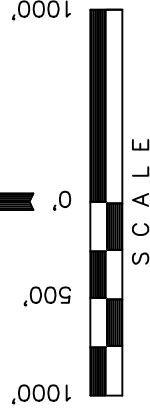


LEGEND:

- = 90° SYMBOL
- = PROPOSED WELL HEAD.
- ▲ = SECTION CORNERS LOCATED.

NAD 83 (TARGET BOTTOM HOLE)	
LATITUDE =	40°49'52.50" (40.831250)
LONGITUDE =	103°49'37.73" (103.827147)
NAD 27 (TARGET BOTTOM HOLE)	
LATITUDE =	40°49'52.55" (40.831264)
LONGITUDE =	103°49'35.93" (103.826647)

Surface Location



CERTIFICATE

THIS IS TO CERTIFY THAT THE ABOVE PLAT WAS PREPARED FROM FIELD NOTES OF ACTUAL SURVEYS MADE BY ME OR UNDER MY SUPERVISION AND THAT THE SAME ARE TRUE AND CORRECT TO THE BEST OF MY KNOWLEDGE AND BELIEF.

2010 UELS Alum. Cap.
0.3' High, Fence Corner
Lat: 40.816975°
Long: 103.822819°

2012 UELS Alum. Cap.
0.1 High
Lat: 40.816942°
Long: 103.832336°

2012 UELS Alum. Cap.
0.2' High
Lat: 40.824203°
Long: 103.842042°

2010 UELS Alum. Cap.
0.5' High
Lat: 40.831497°
Long: 103.832603°

Stone
Lat: 40.831547°
Long: 103.822978°

UTAH ENGINEERING & LAND SURVEYING
85 SOUTH 200 EAST - VERNAL, UTAH 84078
(435) 789-1017

SCALE 1" = 1000'	DATE SURVEYED: 03-19-13	DATE DRAWN: 03-25-13
PARTY T.B. C.B. H.K.W.	REFERENCES G.L.O. PLAT	
WEATHER COLD	FILE	
		WHITING OIL & GAS CORP.