

T10N, R58W, 6th P.M.

WHITING OIL & GAS CORP.

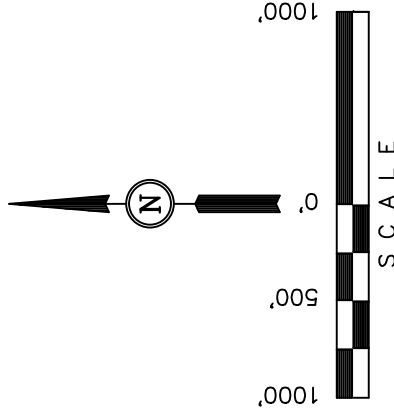
Well location, RAZOR #11E-0202B (SURFACE LOCATION), located as shown in the SW 1/4 NW 1/4 of Section 11, T10N, R58W, 6th P.M., Weld County, Colorado.

BASIS OF ELEVATION

SPOT ELEVATION LOCATED AT THE NORTHEAST CORNER OF SECTION 15, T9N, R58W, 6th P.M. TAKEN FROM THE GATEHOOK SPRING, QUADRANGLE, COLORADO, WELD COUNTY, 7.5 MINUTE QUAD (TOPOGRAPHIC MAP) PUBLISHED BY THE UNITED STATES DEPARTMENT OF THE INTERIOR, GEOLOGICAL SURVEY. SAID ELEVATION IS MARKED AS BEING 4679 FEET.

BASIS OF BEARINGS

BASIS OF BEARINGS IS A G.P.S. OBSERVATION.



CERTIFICATION
THIS IS TO CERTIFY THAT THE ABOVE PLAT WAS PREPARED FROM FIELD NOTES OF ACTUAL SURVEYS MADE BY ME OR UNDER MY SUPERVISION AND THAT THE SAME ARE TRUE AND CORRECT TO THE BEST OF MY KNOWLEDGE AND BELIEF.
REGISTERED LAND SURVEYOR
REGISTRATION NO. 28285
STATE OF COLORADO
JAN 11 2013
RECEIVED
COUNTY CLERK
WELD COUNTY
PLAT 2-13

REVISED: 07-03-13

UINTAH ENGINEERING & LAND SURVEYING
85 SOUTH 200 EAST - VERNAL, UTAH 84078
(435) 789-1017

SCALE
1" = 1000'

DATE SURVEYED:
05-14-13

DATE DRAWN:
05-17-13

PARTY

REFERENCES

G.L.O. PLAT

D.N. G.W. B.D.H.

WEATHER

WARM

FILE

WHITING OIL & GAS CORP.

PDOP = 1.1

NAD 83 (SURFACE LOCATION)
LATITUDE = 40°51'15.08" (40.854189)
LONGITUDE = 103°50'21.80" (103.839389)

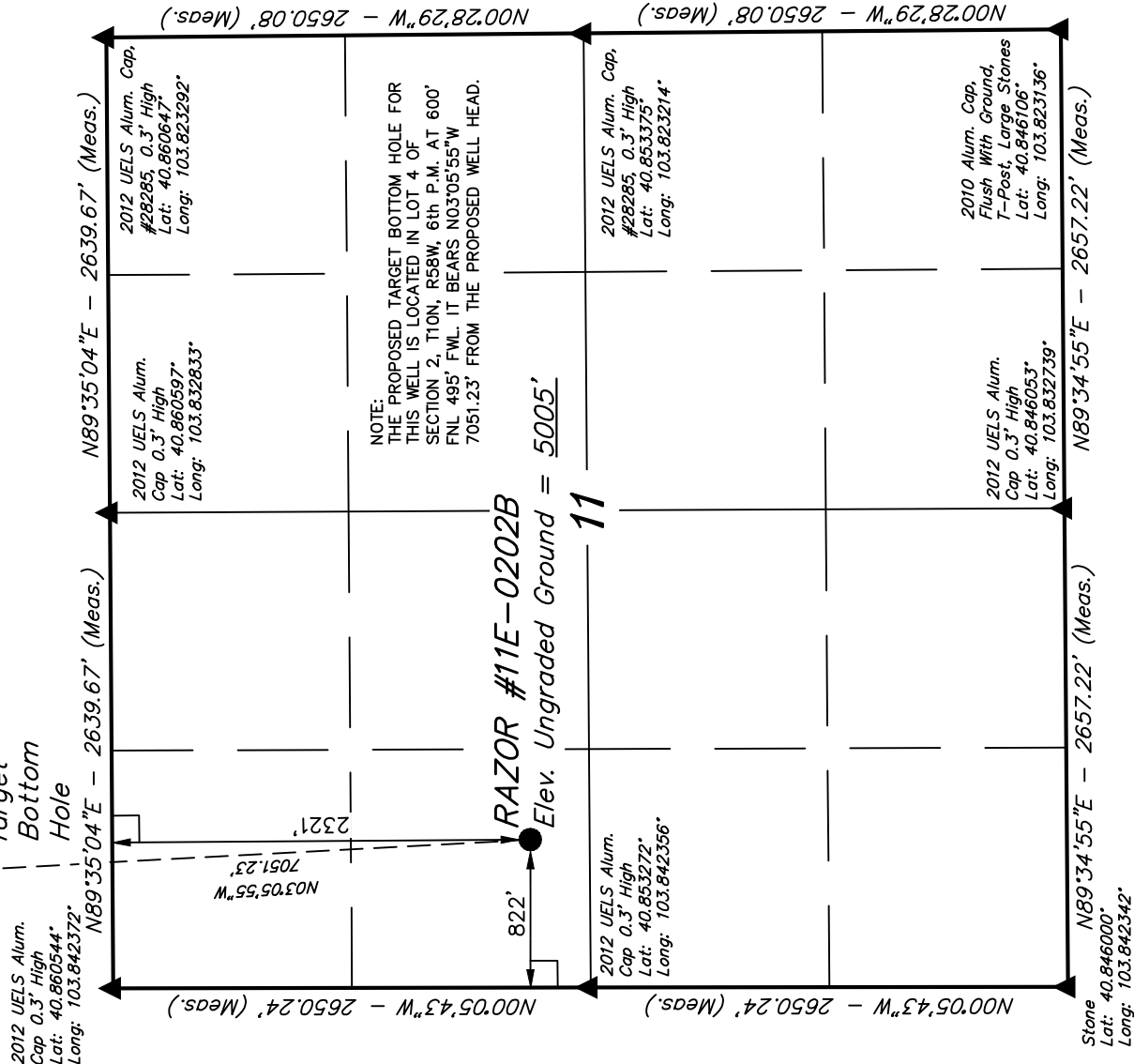
NAD 27 (SURFACE LOCATION)
LATITUDE = 40°51'15.14" (40.854206)
LONGITUDE = 103°50'19.99" (103.838886)

LEGEND:

— = 90° SYMBOL

● = PROPOSED WELL HEAD.

▲ = SECTION CORNERS LOCATED.



T10N, R58W, 6th P.M.

2012 Alum. Cap
0.5' High
Pile of Stones
PLS #28285
Lat: 40.875150°
Long: 103.842578°

WHITING OIL & GAS CORP.

Well location, RAZOR #11E-0202B (TARGET
BOTTOM HOLE), located as shown in LOT
4 of Section 2, T10N, R58W, 6th P.M.,
Weld County, Colorado.

BASIS OF ELEVATION

SPOT ELEVATION LOCATED AT THE NORTHEAST CORNER OF
SECTION 15, T9N, R58W, 6th P.M. TAKEN FROM THE
GATEHOOK SPRING, QUADRANGLE, COLORADO, WELD COUNTY,
7.5 MINUTE QUAD (TOPOGRAPHIC MAP) PUBLISHED BY THE
UNITED STATES DEPARTMENT OF THE INTERIOR, GEOLOGICAL
SURVEY. SAID ELEVATION IS MARKED AS BEING 4679 FEET.

BASIS OF BEARINGS

BASIS OF BEARINGS IS A G.P.S. OBSERVATION.

T11N
T10N

N89°43'10"E - 2649.68' (Meas.)

2012 UELS Alum.
Cap 0.3' High
Lat: 40.875186°
Long: 103.833000°

LOT 2

LOT 1

RAZOR #11E-0202B
Target Bottom Hole

LOT 3

LOT 4

2012 UELS Alum.
Cap 0.3' High
Lat: 40.867817°
Long: 103.842475°

2

N03°05'55"W
7051.23'

NOTE:
THE PROPOSED TARGET BOTTOM HOLE
BEARS N03°05'55"W 7051.23' FROM THE
PROPOSED WELL HEAD WHICH IS LOCATED IN
THE SW 1/4 NW 1/4 OF SECTION 11, T10N,
R58W, 6th P.M. AT 2321' FNL 822' FWL.

2012 UELS Alum. Cap,
#28285, 0.3' High
Lat: 40.860647°
Long: 103.823292°

2012 UELS Alum.
Cap 0.3' High
Lat: 40.860597°
Long: 103.832833°

N89°35'04"E - 2639.67' (Meas.)

N89°35'04"E - 2639.67' (Meas.)

2012 UELS Alum.
Cap 0.3' High
Lat: 40.860544°
Long: 103.842372°

LEGEND:

└─ 90° SYMBOL

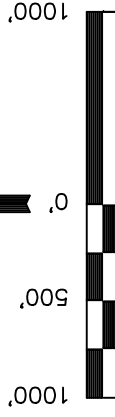
● = PROPOSED WELL HEAD.

▲ = SECTION CORNERS LOCATED.

● Surface Location

N00°23'40"W - 2650.09' (Meas.)

2012 UELS Alum. Cap,
#28285, 0.3' High
Lat: 40.867919°
Long: 103.823356°



S C A L E

CERTIFICATE OF RECORDING
THIS IS TO CERTIFY THAT THE ABOVE PLAT WAS PREPARED FROM
FIELD NOTES OF ACTUAL SURVEY MADE BY ME OR UNDER MY
SUPERVISION AND THAT THE SAME IS TRUE AND CORRECT TO THE
BEST OF MY KNOWLEDGE AND BELIEF.
REGISTERED LAND SURVEYOR
REGISTRATION NO. 28285
STATE OF COLORADO
RECEIVED
JAN 11 2018
COUNTY OF WELD

REVISED: 07-03-13

UINTAH ENGINEERING & LAND SURVEYING
85 SOUTH 200 EAST - VERNAL, UTAH 84078
(435) 789-1017

SCALE
1" = 1000'

DATE SURVEYED:
05-14-13

DATE DRAWN:
05-17-13

PARTY

REFERENCES

G.L.O. PLAT

FILE

WEATHER

D.N. G.W. B.D.H.

WHITING OIL & GAS CORP.