

T10N, R58W, 6th P.M.

WHITING OIL & GAS CORP.

Well location, RAZOR FEDERAL #261-3514B (SURFACE LOCATION), located as shown in the NE 1/4 SE 1/4 of Section 26, T10N, R58W, 6th P.M., Weld County, Colorado.

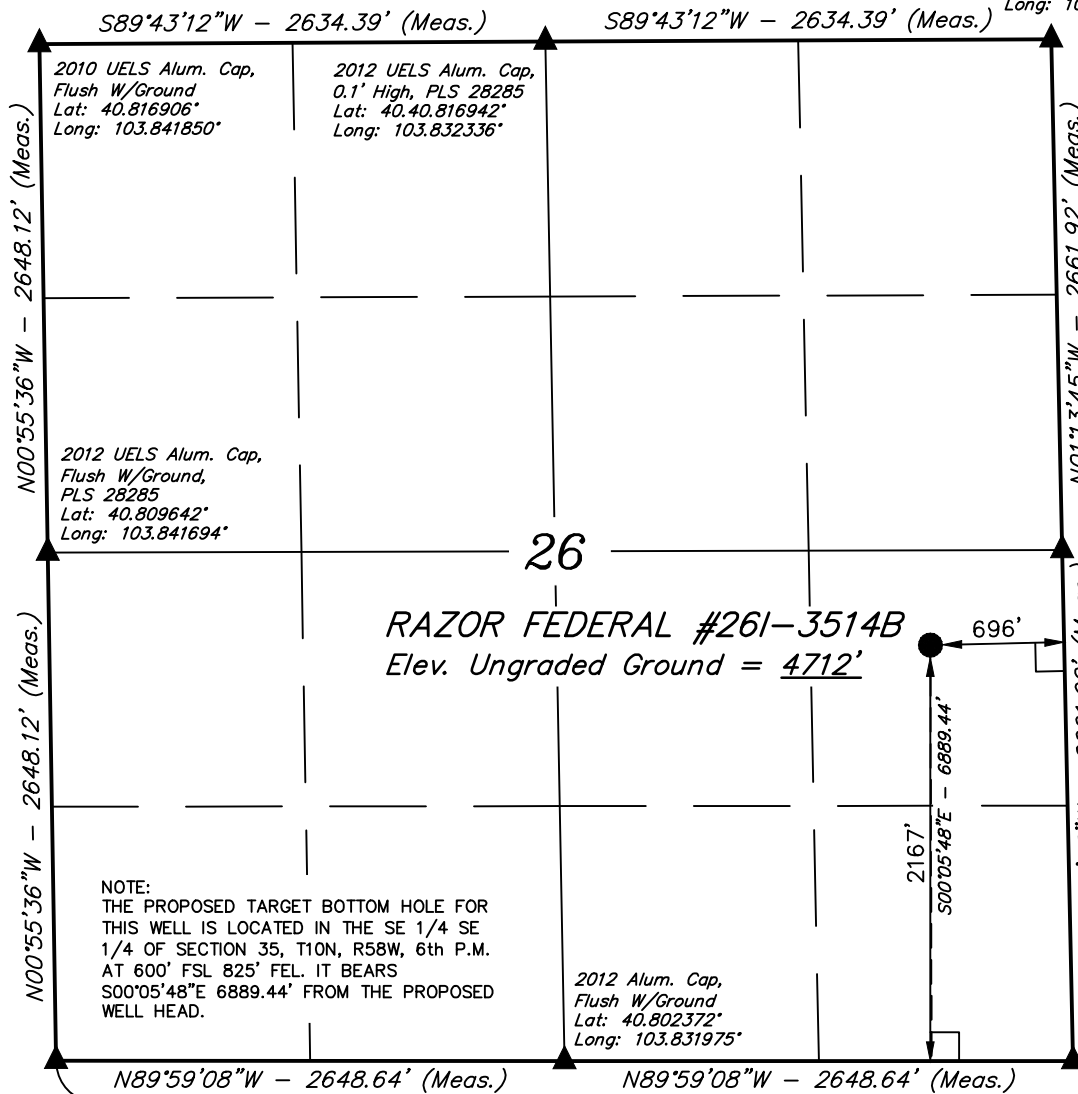
2010 UELS Alum.
Cap, 0.3' High
Lat: 40.816975°
Long: 103.822819°

BASIS OF ELEVATION

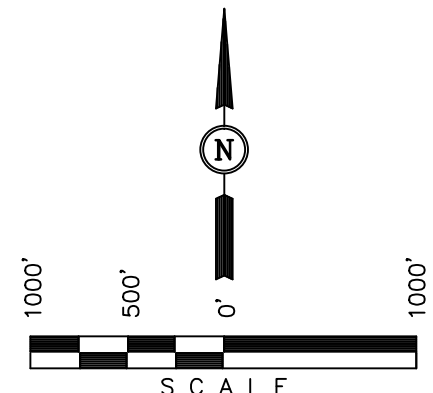
SPOT ELEVATION LOCATED AT THE NORTHEAST CORNER OF SECTION 15, T9N, R58W, 6th P.M. TAKEN FROM THE GATEHOOK SPRING, QUADRANGLE, COLORADO, WELD COUNTY, 7.5 MINUTE QUAD (TOPOGRAPHIC MAP) PUBLISHED BY THE UNITED STATES DEPARTMENT OF THE INTERIOR, GEOLOGICAL SURVEY. SAID ELEVATION IS MARKED AS BEING 4679 FEET.

BASIS OF BEARINGS

BASIS OF BEARINGS IS A G.P.S. OBSERVATION.

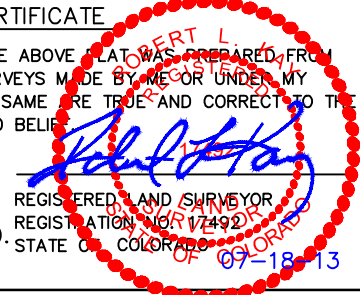


2012 UELS Alum. Cap,
0.1' High, PLS 28285
Lat: 40.809672°
Long: 103.822617°



CERTIFICATE

THIS IS TO CERTIFY THAT THE ABOVE PLAN WAS PREPARED FROM FIELD NOTES OF ACTUAL SURVEYS MADE BY ME OR UNDER MY SUPERVISION AND THAT THE SAME ARE TRUE AND CORRECT TO THE BEST OF MY KNOWLEDGE AND BELIEF.



2010 UELS Alum.
Cap, Flush W/Ground
Fence Corner
Lat: 40.802369°
Long: 103.822411°

REVISED: 07-18-13 A.D.
REVISED: 04-15-13

NOTE:
THE PROPOSED TARGET BOTTOM HOLE FOR THIS WELL IS LOCATED IN THE SE 1/4 SE 1/4 OF SECTION 35, T10N, R58W, 6th P.M. AT 600' FSL 825' FEL. IT BEARS S00°05'48"E 6889.44' FROM THE PROPOSED WELL HEAD.

2012 Alum. Cap,
Flush W/Ground
Lat: 40.802372°
Long: 103.831975°

2010 UELS Alum. Cap,
Flush W/Ground
E/W Fence
Lat: 40.802375°
Long: 103.841542°

Target Bottom Hole

PDOP = 1.2

- LEGEND:**
- └─┘ = 90° SYMBOL
 - = PROPOSED WELL HEAD.
 - ▲ = SECTION CORNERS LOCATED.

| | |
|----------------------------------|------------------------------|
| NAD 83 (SURFACE LOCATION) | |
| LATITUDE | = 40°48'29.94" (40.808317) |
| LONGITUDE | = 103°49'30.34" (103.825094) |
| NAD 27 (SURFACE LOCATION) | |
| LATITUDE | = 40°48'29.99" (40.808331) |
| LONGITUDE | = 103°49'28.53" (103.824592) |

UINTAH ENGINEERING & LAND SURVEYING
85 SOUTH 200 EAST - VERNAL, UTAH 84078
(435) 789-1017

| | | |
|---------------------------|---------------------------------|-------------------------|
| SCALE 1" = 1000' | DATE SURVEYED: 03-19-13 | DATE DRAWN: 03-25-13 |
| PARTY T.B. C.B. H.K.W. | REFERENCES G.L.O. PLAT | |
| WEATHER COLD | FILE WHITING OIL & GAS CORP. | |

T10N, R58W, 6th. P.M.

Surface Location

WHITING OIL & GAS CORP.

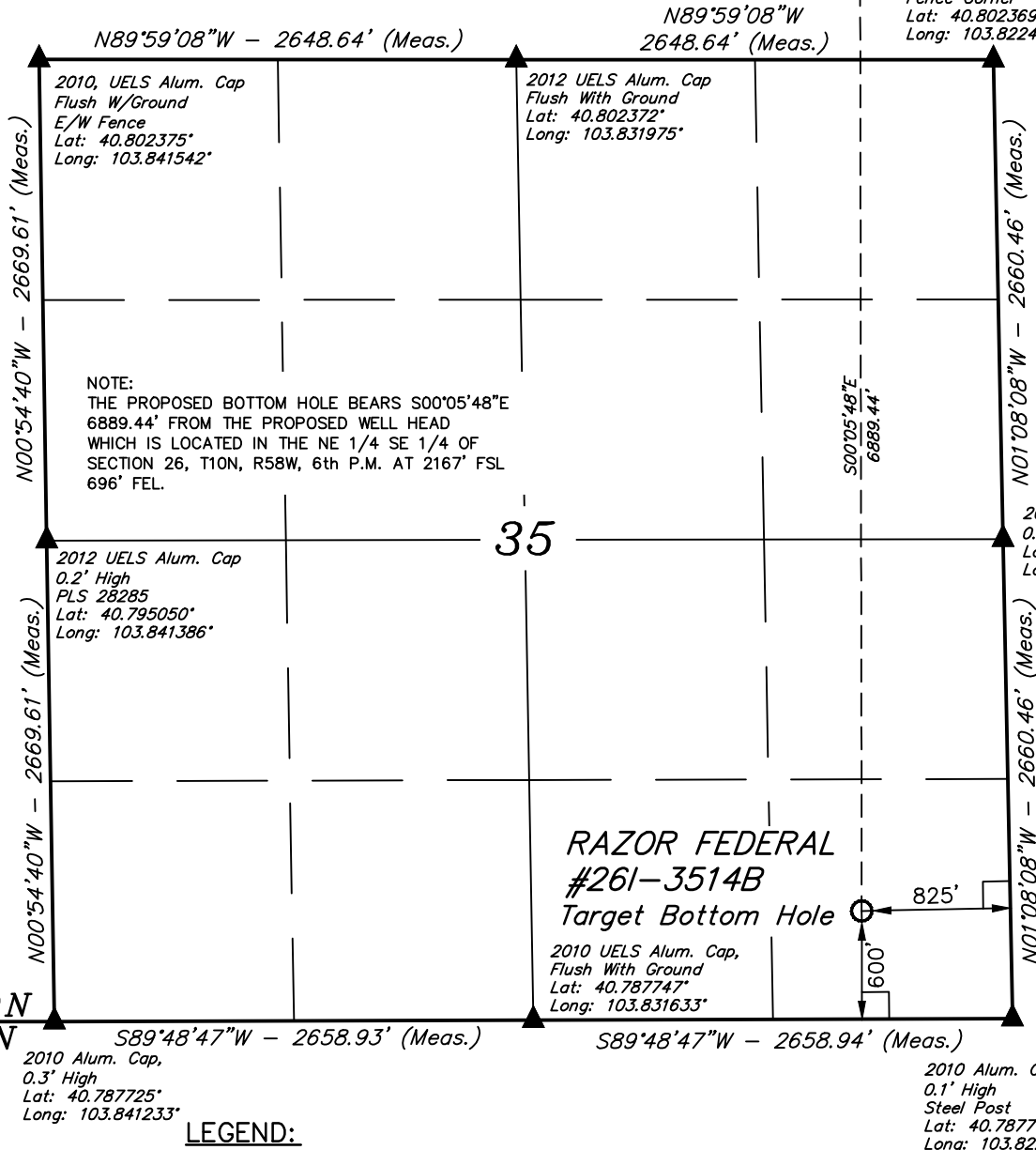
Well location, RAZOR FEDERAL #261-3514B (TARGET BOTTOM HOLE), located as shown in the SE 1/4 SE 1/4 of Section 35, T10N, R58W, 6th P.M., Weld County, Colorado.

BASIS OF ELEVATION

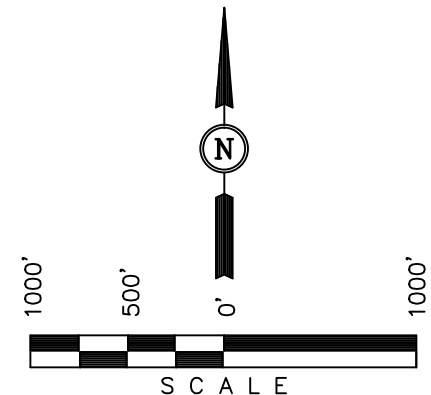
SPOT ELEVATION LOCATED AT THE NORTHEAST CORNER OF SECTION 15, T9N, R58W, 6th P.M. TAKEN FROM THE GATEHOOK SPRING, QUADRANGLE, COLORADO, WELD COUNTY, 7.5 MINUTE QUAD (TOPOGRAPHIC MAP) PUBLISHED BY THE UNITED STATES DEPARTMENT OF THE INTERIOR, GEOLOGICAL SURVEY. SAID ELEVATION IS MARKED AS BEING 4679 FEET.

BASIS OF BEARINGS

BASIS OF BEARINGS IS A G.P.S. OBSERVATION.



NOTE:
THE PROPOSED BOTTOM HOLE BEARS S00°05'48"E 6889.44' FROM THE PROPOSED WELL HEAD WHICH IS LOCATED IN THE NE 1/4 SE 1/4 OF SECTION 26, T10N, R58W, 6th P.M. AT 2167' FSL 696' FEL.



CERTIFICATE

THIS IS TO CERTIFY THAT THE ABOVE PLAT WAS PREPARED FROM FIELD NOTES OF ACTUAL SURVEYS MADE BY ME OR UNDER MY SUPERVISION AND THAT THE SAME ARE TRUE AND CORRECT TO THE BEST OF MY KNOWLEDGE AND BELIEF.

REGISTERED LAND SURVEYOR
REGISTRATION NO. 17492
STATE OF COLORADO
04-15-13

REV: 04-15-13

UINTAH ENGINEERING & LAND SURVEYING
85 SOUTH 200 EAST - VERNAL, UTAH 84078
(435) 789-1017

LEGEND:

- └─┘ = 90° SYMBOL
- = PROPOSED WELL HEAD.
- ▲ = SECTION CORNERS LOCATED.

| |
|----------------------------------------|
| NAD 83 (TARGET BOTTOM HOLE) |
| LATITUDE = 40°47'21.88" (40.789411) |
| LONGITUDE = 103°49'30.20" (103.825056) |
| NAD 27 (TARGET BOTTOM HOLE) |
| LATITUDE = 40°47'21.93" (40.789425) |
| LONGITUDE = 103°49'28.39" (103.824553) |

| | | |
|---------------------------|---------------------------------|-------------------------|
| SCALE 1" = 1000' | DATE SURVEYED: 03-19-13 | DATE DRAWN: 03-25-13 |
| PARTY T.B. C.B. H.K.W. | REFERENCES G.L.O. PLAT | |
| WEATHER COLD | FILE WHITING OIL & GAS CORP. | |