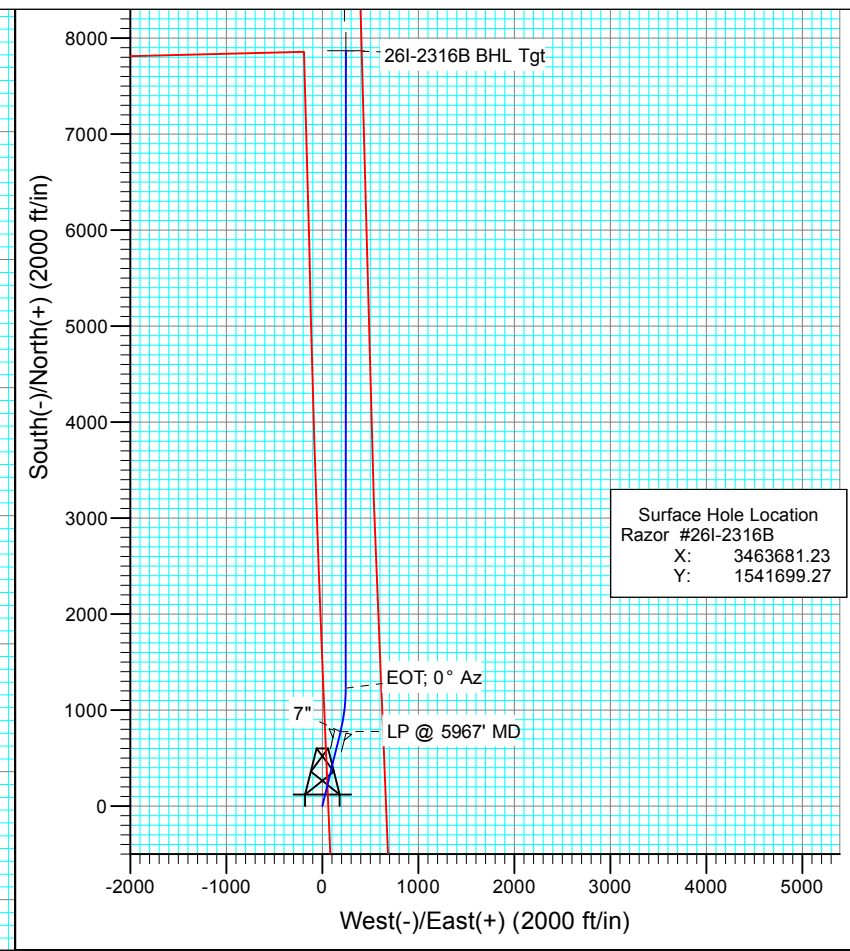
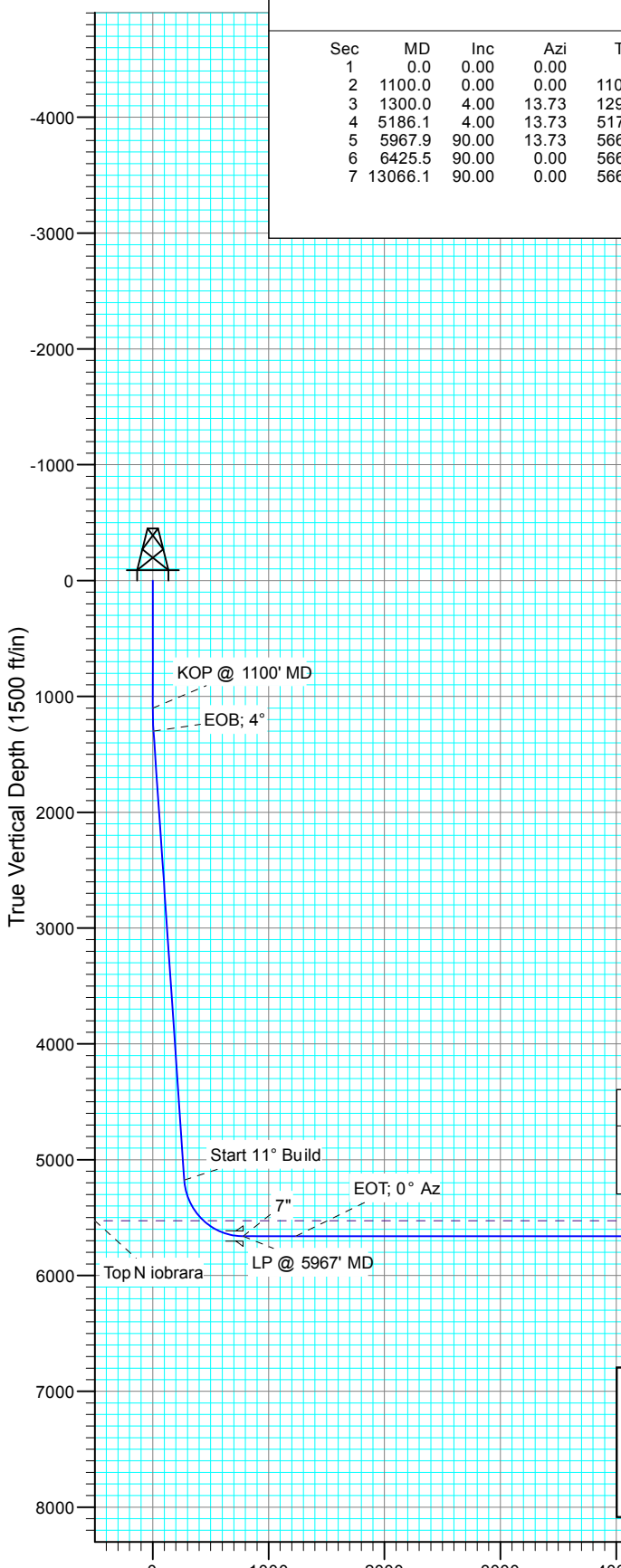


**SECTION DETAILS**

Sec	MD	Inc	Azi	TVD	+N/-S	+E/-W	Dleg	TFace	V Sect	Target	Annotation
1	0.0	0.00	0.00	0.0	0.0	0.0	0.00	0.00	0.0		
2	1100.0	0.00	0.00	1100.0	0.0	0.0	0.00	0.00	0.0		KOP @ 1100' MD
3	1300.0	4.00	13.73	1299.8	6.8	1.7	2.00	13.73	6.8		EOB; 4°
4	5186.1	4.00	13.73	5176.5	270.1	66.0	0.00	0.00	272.0		Start 11° Build
5	5967.9	90.00	13.73	5661.0	774.9	189.3	11.00	0.00	780.4		LP @ 5967' MD
6	6425.5	90.00	0.00	5661.0	1228.1	243.9	3.00	-90.00	1235.0		EOT; 0° Az
7	13066.1	90.00	0.00	5661.0	7868.7	244.2	0.00	0.00	7872.5	26I-2316B BHL TgPBHL @ 13066' MD	



Surface Hole Location  
 Razor #26I-2316B  
 X: 3463681.23  
 Y: 1541699.27

**DESIGN TARGET DETAILS**

Name	TVD	+N/-S	+E/-W	Northing	Easting
26I-2316B BHL	5661.0	8368.5	230.2	1550067.78	3463911.40
26I-2316B BHL Tgt	5661.0	7868.7	244.2	1549567.99	3463925.46

**T G M**

Azimuths to Grid North  
 True North: -1.08°  
 Magnetic North: 7.04°

Magnetic Field  
 Strength: 53236.9snT  
 Dip Angle: 67.46°  
 Date: 5/20/2013  
 Model: IGRF2010

Plan #2  
 Razor #26I-2316B  
 135XXX; SC  
 KB=16.5' @ 4728.2ft (Original Well Elev)  
 Ground Elevation @ 4711.7  
 North American Datum 1983  
 Well Razor Federal #26I-2316B, Grid North

Vertical Section at 1.78° (1500 ft/in)

<b>Database:</b>	USA EDM 5000 Multi Users DB	<b>Local Co-ordinate Reference:</b>	Well Razor #26I-2316B
<b>Company:</b>	Whiting Petroleum Corporation	<b>TVD Reference:</b>	KB=16.5' @ 4728.2ft (Original Well Elev)
<b>Project:</b>	Weld County, CO	<b>MD Reference:</b>	KB=16.5' @ 4728.2ft (Original Well Elev)
<b>Site:</b>	S26-T10N-R58W	<b>North Reference:</b>	Grid
<b>Well:</b>	Razor #26I-2316B	<b>Survey Calculation Method:</b>	Minimum Curvature
<b>Wellbore:</b>	HZ		
<b>Design:</b>	Plan #2		

<b>Project</b>	Weld County, CO		
<b>Map System:</b>	US State Plane 1983	<b>System Datum:</b>	Mean Sea Level
<b>Geo Datum:</b>	North American Datum 1983		
<b>Map Zone:</b>	Colorado Northern Zone		

<b>Site</b>	S26-T10N-R58W				
<b>Site Position:</b>		<b>Northing:</b>	1,541,777.36 ft	<b>Latitude:</b>	40° 48' 31.46 N
<b>From:</b>	Lat/Long	<b>Easting:</b>	3,459,649.47 ft	<b>Longitude:</b>	103° 50' 22.31 W
<b>Position Uncertainty:</b>	0.0 ft	<b>Slot Radius:</b>	13.200 in	<b>Grid Convergence:</b>	1.07 °

<b>Well</b>	Razor #26I-2316B					
<b>Well Position</b>	<b>+N/-S</b>	0.0 ft	<b>Northing:</b>	1,541,699.27 ft	<b>Latitude:</b>	40° 48' 29.94 N
	<b>+E/-W</b>	0.0 ft	<b>Easting:</b>	3,463,681.23 ft	<b>Longitude:</b>	103° 49' 29.91 W
<b>Position Uncertainty</b>		0.0 ft	<b>Wellhead Elevation:</b>	ft	<b>Ground Level:</b>	4,711.7 ft

<b>Wellbore</b>	HZ				
<b>Magnetics</b>	<b>Model Name</b>	<b>Sample Date</b>	<b>Declination</b>	<b>Dip Angle</b>	<b>Field Strength</b>
	IGRF2010	5/20/2013	(°)	(°)	(nT)
			8.12	67.46	53,237

<b>Design</b>	Plan #2			
<b>Audit Notes:</b>				
<b>Version:</b>	<b>Phase:</b>	PLAN	<b>Tie On Depth:</b>	0.0
<b>Vertical Section:</b>	<b>Depth From (TVD)</b>	<b>+N/-S</b>	<b>+E/-W</b>	<b>Direction</b>
	(ft)	(ft)	(ft)	(°)
	0.0	0.0	0.0	1.78

<b>Plan Sections</b>										
Measured Depth (ft)	Inclination (°)	Azimuth (°)	Vertical Depth (ft)	+N/-S (ft)	+E/-W (ft)	Dogleg Rate (°/100ft)	Build Rate (°/100ft)	Turn Rate (°/100ft)	TFO (°)	Target
0.0	0.00	0.00	0.0	0.0	0.0	0.00	0.00	0.00	0.00	
1,100.0	0.00	0.00	1,100.0	0.0	0.0	0.00	0.00	0.00	0.00	
1,300.0	4.00	13.73	1,299.8	6.8	1.7	2.00	2.00	0.00	13.73	
5,186.1	4.00	13.73	5,176.5	270.1	66.0	0.00	0.00	0.00	0.00	
5,967.9	90.00	13.73	5,661.0	774.9	189.3	11.00	11.00	0.00	0.00	
6,425.5	90.00	0.00	5,661.0	1,228.1	243.9	3.00	0.00	-3.00	-90.00	
13,066.1	90.00	0.00	5,661.0	7,868.7	244.2	0.00	0.00	0.00	0.00	26I-2316B BHL Tgt

<b>Database:</b>	USA EDM 5000 Multi Users DB	<b>Local Co-ordinate Reference:</b>	Well Razor #26I-2316B
<b>Company:</b>	Whiting Petroleum Corporation	<b>TVD Reference:</b>	KB=16.5' @ 4728.2ft (Original Well Elev)
<b>Project:</b>	Weld County, CO	<b>MD Reference:</b>	KB=16.5' @ 4728.2ft (Original Well Elev)
<b>Site:</b>	S26-T10N-R58W	<b>North Reference:</b>	Grid
<b>Well:</b>	Razor #26I-2316B	<b>Survey Calculation Method:</b>	Minimum Curvature
<b>Wellbore:</b>	HZ		
<b>Design:</b>	Plan #2		

Planned Survey									
Measured Depth (ft)	Inclination (°)	Azimuth (°)	Vertical Depth (ft)	+N/-S (ft)	+E/-W (ft)	Vertical Section (ft)	Dogleg Rate (°/100ft)	Build Rate (°/100ft)	Comments / Formations
0.0	0.00	0.00	0.0	0.0	0.0	0.0	0.00	0.00	
100.0	0.00	0.00	100.0	0.0	0.0	0.0	0.00	0.00	
200.0	0.00	0.00	200.0	0.0	0.0	0.0	0.00	0.00	
300.0	0.00	0.00	300.0	0.0	0.0	0.0	0.00	0.00	
400.0	0.00	0.00	400.0	0.0	0.0	0.0	0.00	0.00	
500.0	0.00	0.00	500.0	0.0	0.0	0.0	0.00	0.00	
600.0	0.00	0.00	600.0	0.0	0.0	0.0	0.00	0.00	
700.0	0.00	0.00	700.0	0.0	0.0	0.0	0.00	0.00	
800.0	0.00	0.00	800.0	0.0	0.0	0.0	0.00	0.00	
900.0	0.00	0.00	900.0	0.0	0.0	0.0	0.00	0.00	
1,000.0	0.00	0.00	1,000.0	0.0	0.0	0.0	0.00	0.00	
1,100.0	0.00	0.00	1,100.0	0.0	0.0	0.0	0.00	0.00	KOP @ 1100' MD
1,200.0	2.00	13.73	1,200.0	1.7	0.4	1.7	2.00	2.00	
1,300.0	4.00	13.73	1,299.8	6.8	1.7	6.8	2.00	2.00	EOB; 4°
1,400.0	4.00	13.73	1,399.6	13.6	3.3	13.7	0.00	0.00	
1,500.0	4.00	13.73	1,499.4	20.3	5.0	20.5	0.00	0.00	
1,600.0	4.00	13.73	1,599.1	27.1	6.6	27.3	0.00	0.00	
1,700.0	4.00	13.73	1,698.9	33.9	8.3	34.1	0.00	0.00	
1,800.0	4.00	13.73	1,798.6	40.7	9.9	40.9	0.00	0.00	
1,900.0	4.00	13.73	1,898.4	47.4	11.6	47.8	0.00	0.00	
2,000.0	4.00	13.73	1,998.1	54.2	13.2	54.6	0.00	0.00	
2,100.0	4.00	13.73	2,097.9	61.0	14.9	61.4	0.00	0.00	
2,200.0	4.00	13.73	2,197.6	67.8	16.6	68.2	0.00	0.00	
2,300.0	4.00	13.73	2,297.4	74.5	18.2	75.1	0.00	0.00	
2,400.0	4.00	13.73	2,397.2	81.3	19.9	81.9	0.00	0.00	
2,500.0	4.00	13.73	2,496.9	88.1	21.5	88.7	0.00	0.00	
2,600.0	4.00	13.73	2,596.7	94.9	23.2	95.5	0.00	0.00	
2,700.0	4.00	13.73	2,696.4	101.6	24.8	102.4	0.00	0.00	
2,800.0	4.00	13.73	2,796.2	108.4	26.5	109.2	0.00	0.00	
2,900.0	4.00	13.73	2,895.9	115.2	28.1	116.0	0.00	0.00	
3,000.0	4.00	13.73	2,995.7	122.0	29.8	122.8	0.00	0.00	
3,100.0	4.00	13.73	3,095.5	128.8	31.5	129.7	0.00	0.00	
3,200.0	4.00	13.73	3,195.2	135.5	33.1	136.5	0.00	0.00	
3,300.0	4.00	13.73	3,295.0	142.3	34.8	143.3	0.00	0.00	
3,400.0	4.00	13.73	3,394.7	149.1	36.4	150.1	0.00	0.00	
3,500.0	4.00	13.73	3,494.5	155.9	38.1	157.0	0.00	0.00	
3,600.0	4.00	13.73	3,594.2	162.6	39.7	163.8	0.00	0.00	
3,700.0	4.00	13.73	3,694.0	169.4	41.4	170.6	0.00	0.00	
3,800.0	4.00	13.73	3,793.8	176.2	43.0	177.4	0.00	0.00	
3,900.0	4.00	13.73	3,893.5	183.0	44.7	184.3	0.00	0.00	
4,000.0	4.00	13.73	3,993.3	189.7	46.4	191.1	0.00	0.00	
4,100.0	4.00	13.73	4,093.0	196.5	48.0	197.9	0.00	0.00	
4,200.0	4.00	13.73	4,192.8	203.3	49.7	204.7	0.00	0.00	
4,300.0	4.00	13.73	4,292.5	210.1	51.3	211.6	0.00	0.00	
4,400.0	4.00	13.73	4,392.3	216.8	53.0	218.4	0.00	0.00	
4,500.0	4.00	13.73	4,492.1	223.6	54.6	225.2	0.00	0.00	
4,600.0	4.00	13.73	4,591.8	230.4	56.3	232.0	0.00	0.00	
4,700.0	4.00	13.73	4,691.6	237.2	57.9	238.9	0.00	0.00	
4,800.0	4.00	13.73	4,791.3	244.0	59.6	245.7	0.00	0.00	
4,900.0	4.00	13.73	4,891.1	250.7	61.3	252.5	0.00	0.00	
5,000.0	4.00	13.73	4,990.8	257.5	62.9	259.3	0.00	0.00	
5,100.0	4.00	13.73	5,090.6	264.3	64.6	266.2	0.00	0.00	

<b>Database:</b>	USA EDM 5000 Multi Users DB	<b>Local Co-ordinate Reference:</b>	Well Razor #26I-2316B
<b>Company:</b>	Whiting Petroleum Corporation	<b>TVD Reference:</b>	KB=16.5' @ 4728.2ft (Original Well Elev)
<b>Project:</b>	Weld County, CO	<b>MD Reference:</b>	KB=16.5' @ 4728.2ft (Original Well Elev)
<b>Site:</b>	S26-T10N-R58W	<b>North Reference:</b>	Grid
<b>Well:</b>	Razor #26I-2316B	<b>Survey Calculation Method:</b>	Minimum Curvature
<b>Wellbore:</b>	HZ		
<b>Design:</b>	Plan #2		

Planned Survey									
Measured Depth (ft)	Inclination (°)	Azimuth (°)	Vertical Depth (ft)	+N/-S (ft)	+E/-W (ft)	Vertical Section (ft)	Dogleg Rate (°/100ft)	Build Rate (°/100ft)	Comments / Formations
5,186.1	4.00	13.73	5,176.5	270.1	66.0	272.0	0.00	0.00	Start 11° Build
5,200.0	5.53	13.73	5,190.3	271.2	66.3	273.2	10.99	10.99	
5,300.0	16.53	13.73	5,288.3	289.8	70.8	291.9	11.00	11.00	
5,400.0	27.53	13.73	5,380.9	326.2	79.7	328.5	11.00	11.00	
5,500.0	38.53	13.73	5,464.6	379.0	92.6	381.7	11.00	11.00	
5,585.8	47.96	13.73	5,527.0	436.1	106.5	439.2	11.00	11.00	Top Niobrara
5,600.0	49.53	13.73	5,536.4	446.5	109.1	449.6	10.99	10.99	
5,700.0	60.53	13.73	5,593.6	525.9	128.5	529.7	11.00	11.00	
5,800.0	71.53	13.73	5,634.2	614.6	150.2	618.9	11.00	11.00	
5,900.0	82.53	13.73	5,656.6	709.1	173.3	714.1	11.00	11.00	
5,967.9	90.00	13.73	5,661.0	774.9	189.3	780.4	11.00	11.00	LP @ 5967' MD - 7"
6,000.0	90.00	12.77	5,661.0	806.1	196.7	811.8	3.00	0.01	
6,100.0	90.00	9.77	5,661.0	904.2	216.2	910.4	3.00	0.00	
6,200.0	90.00	6.77	5,661.0	1,003.1	230.6	1,009.8	3.00	0.00	
6,300.0	90.00	3.77	5,661.0	1,102.7	239.8	1,109.6	3.00	0.00	
6,400.0	90.00	0.77	5,661.0	1,202.6	243.7	1,209.6	3.00	0.00	
6,425.5	90.00	0.00	5,661.0	1,228.1	243.9	1,235.1	3.00	0.00	EOT; 0° Az
6,500.0	90.00	0.00	5,661.0	1,302.6	243.9	1,309.5	0.00	0.00	
6,600.0	90.00	0.00	5,661.0	1,402.6	243.9	1,409.5	0.00	0.00	
6,700.0	90.00	0.00	5,661.0	1,502.6	243.9	1,509.4	0.00	0.00	
6,800.0	90.00	0.00	5,661.0	1,602.6	243.9	1,609.4	0.00	0.00	
6,900.0	90.00	0.00	5,661.0	1,702.6	243.9	1,709.3	0.00	0.00	
7,000.0	90.00	0.00	5,661.0	1,802.6	243.9	1,809.3	0.00	0.00	
7,100.0	90.00	0.00	5,661.0	1,902.6	243.9	1,909.2	0.00	0.00	
7,200.0	90.00	0.00	5,661.0	2,002.6	243.9	2,009.2	0.00	0.00	
7,300.0	90.00	0.00	5,661.0	2,102.6	243.9	2,109.2	0.00	0.00	
7,400.0	90.00	0.00	5,661.0	2,202.6	243.9	2,209.1	0.00	0.00	
7,500.0	90.00	0.00	5,661.0	2,302.6	244.0	2,309.1	0.00	0.00	
7,600.0	90.00	0.00	5,661.0	2,402.6	244.0	2,409.0	0.00	0.00	
7,700.0	90.00	0.00	5,661.0	2,502.6	244.0	2,509.0	0.00	0.00	
7,800.0	90.00	0.00	5,661.0	2,602.6	244.0	2,608.9	0.00	0.00	
7,900.0	90.00	0.00	5,661.0	2,702.6	244.0	2,708.9	0.00	0.00	
8,000.0	90.00	0.00	5,661.0	2,802.6	244.0	2,808.8	0.00	0.00	
8,100.0	90.00	0.00	5,661.0	2,902.6	244.0	2,908.8	0.00	0.00	
8,200.0	90.00	0.00	5,661.0	3,002.6	244.0	3,008.7	0.00	0.00	
8,300.0	90.00	0.00	5,661.0	3,102.6	244.0	3,108.7	0.00	0.00	
8,400.0	90.00	0.00	5,661.0	3,202.6	244.0	3,208.6	0.00	0.00	
8,500.0	90.00	0.00	5,661.0	3,302.6	244.0	3,308.6	0.00	0.00	
8,600.0	90.00	0.00	5,661.0	3,402.6	244.0	3,408.5	0.00	0.00	
8,700.0	90.00	0.00	5,661.0	3,502.6	244.0	3,508.5	0.00	0.00	
8,800.0	90.00	0.00	5,661.0	3,602.6	244.0	3,608.4	0.00	0.00	
8,900.0	90.00	0.00	5,661.0	3,702.6	244.0	3,708.4	0.00	0.00	
9,000.0	90.00	0.00	5,661.0	3,802.6	244.0	3,808.3	0.00	0.00	
9,100.0	90.00	0.00	5,661.0	3,902.6	244.0	3,908.3	0.00	0.00	
9,200.0	90.00	0.00	5,661.0	4,002.6	244.0	4,008.2	0.00	0.00	
9,300.0	90.00	0.00	5,661.0	4,102.6	244.0	4,108.2	0.00	0.00	
9,400.0	90.00	0.00	5,661.0	4,202.6	244.1	4,208.1	0.00	0.00	
9,500.0	90.00	0.00	5,661.0	4,302.6	244.1	4,308.1	0.00	0.00	
9,600.0	90.00	0.00	5,661.0	4,402.6	244.1	4,408.1	0.00	0.00	
9,700.0	90.00	0.00	5,661.0	4,502.6	244.1	4,508.0	0.00	0.00	
9,800.0	90.00	0.00	5,661.0	4,602.6	244.1	4,608.0	0.00	0.00	
9,900.0	90.00	0.00	5,661.0	4,702.6	244.1	4,707.9	0.00	0.00	

<b>Database:</b>	USA EDM 5000 Multi Users DB	<b>Local Co-ordinate Reference:</b>	Well Razor #26I-2316B
<b>Company:</b>	Whiting Petroleum Corporation	<b>TVD Reference:</b>	KB=16.5' @ 4728.2ft (Original Well Elev)
<b>Project:</b>	Weld County, CO	<b>MD Reference:</b>	KB=16.5' @ 4728.2ft (Original Well Elev)
<b>Site:</b>	S26-T10N-R58W	<b>North Reference:</b>	Grid
<b>Well:</b>	Razor #26I-2316B	<b>Survey Calculation Method:</b>	Minimum Curvature
<b>Wellbore:</b>	HZ		
<b>Design:</b>	Plan #2		

Planned Survey									
Measured Depth (ft)	Inclination (°)	Azimuth (°)	Vertical Depth (ft)	+N/-S (ft)	+E/-W (ft)	Vertical Section (ft)	Dogleg Rate (°/100ft)	Build Rate (°/100ft)	Comments / Formations
10,000.0	90.00	0.00	5,661.0	4,802.6	244.1	4,807.9	0.00	0.00	
10,100.0	90.00	0.00	5,661.0	4,902.6	244.1	4,907.8	0.00	0.00	
10,200.0	90.00	0.00	5,661.0	5,002.6	244.1	5,007.8	0.00	0.00	
10,300.0	90.00	0.00	5,661.0	5,102.6	244.1	5,107.7	0.00	0.00	
10,400.0	90.00	0.00	5,661.0	5,202.6	244.1	5,207.7	0.00	0.00	
10,500.0	90.00	0.00	5,661.0	5,302.6	244.1	5,307.6	0.00	0.00	
10,600.0	90.00	0.00	5,661.0	5,402.6	244.1	5,407.6	0.00	0.00	
10,700.0	90.00	0.00	5,661.0	5,502.6	244.1	5,507.5	0.00	0.00	
10,800.0	90.00	0.00	5,661.0	5,602.6	244.1	5,607.5	0.00	0.00	
10,900.0	90.00	0.00	5,661.0	5,702.6	244.1	5,707.4	0.00	0.00	
11,000.0	90.00	0.00	5,661.0	5,802.6	244.1	5,807.4	0.00	0.00	
11,100.0	90.00	0.00	5,661.0	5,902.6	244.1	5,907.3	0.00	0.00	
11,200.0	90.00	0.00	5,661.0	6,002.6	244.1	6,007.3	0.00	0.00	
11,300.0	90.00	0.00	5,661.0	6,102.6	244.1	6,107.2	0.00	0.00	
11,400.0	90.00	0.00	5,661.0	6,202.6	244.2	6,207.2	0.00	0.00	
11,500.0	90.00	0.00	5,661.0	6,302.6	244.2	6,307.1	0.00	0.00	
11,600.0	90.00	0.00	5,661.0	6,402.6	244.2	6,407.1	0.00	0.00	
11,700.0	90.00	0.00	5,661.0	6,502.6	244.2	6,507.1	0.00	0.00	
11,800.0	90.00	0.00	5,661.0	6,602.6	244.2	6,607.0	0.00	0.00	
11,900.0	90.00	0.00	5,661.0	6,702.6	244.2	6,707.0	0.00	0.00	
12,000.0	90.00	0.00	5,661.0	6,802.6	244.2	6,806.9	0.00	0.00	
12,100.0	90.00	0.00	5,661.0	6,902.6	244.2	6,906.9	0.00	0.00	
12,200.0	90.00	0.00	5,661.0	7,002.6	244.2	7,006.8	0.00	0.00	
12,300.0	90.00	0.00	5,661.0	7,102.6	244.2	7,106.8	0.00	0.00	
12,400.0	90.00	0.00	5,661.0	7,202.6	244.2	7,206.7	0.00	0.00	
12,500.0	90.00	0.00	5,661.0	7,302.6	244.2	7,306.7	0.00	0.00	
12,600.0	90.00	0.00	5,661.0	7,402.6	244.2	7,406.6	0.00	0.00	
12,700.0	90.00	0.00	5,661.0	7,502.6	244.2	7,506.6	0.00	0.00	
12,800.0	90.00	0.00	5,661.0	7,602.6	244.2	7,606.5	0.00	0.00	
12,900.0	90.00	0.00	5,661.0	7,702.6	244.2	7,706.5	0.00	0.00	
13,000.0	90.00	0.00	5,661.0	7,802.6	244.2	7,806.4	0.00	0.00	
13,066.1	90.00	0.00	5,661.0	7,868.7	244.2	7,872.5	0.00	0.00	PBHL @ 13066' MD

Targets										
Target Name	Dip Angle (°)	Dip Dir. (°)	TVD (ft)	+N/-S (ft)	+E/-W (ft)	Northing (ft)	Easting (ft)	Latitude	Longitude	
26I-2316B BHL Tgt - hit/miss target - Shape - plan hits target center - Point	0.00	0.00	5,661.0	7,868.7	244.2	1,549,567.99	3,463,925.46	40° 49' 47.63 N	103° 49' 24.80 W	
26I-2316B BHL - plan misses target center by 500.0ft at 13066.1ft MD (5661.0 TVD, 7868.7 N, 244.2 E) - Point	0.00	0.00	5,661.0	8,368.5	230.2	1,550,067.78	3,463,911.40	40° 49' 52.57 N	103° 49' 24.86 W	

<b>Database:</b>	USA EDM 5000 Multi Users DB	<b>Local Co-ordinate Reference:</b>	Well Razor #26I-2316B
<b>Company:</b>	Whiting Petroleum Corporation	<b>TVD Reference:</b>	KB=16.5' @ 4728.2ft (Original Well Elev)
<b>Project:</b>	Weld County, CO	<b>MD Reference:</b>	KB=16.5' @ 4728.2ft (Original Well Elev)
<b>Site:</b>	S26-T10N-R58W	<b>North Reference:</b>	Grid
<b>Well:</b>	Razor #26I-2316B	<b>Survey Calculation Method:</b>	Minimum Curvature
<b>Wellbore:</b>	HZ		
<b>Design:</b>	Plan #2		

Casing Points					
Measured Depth (ft)	Vertical Depth (ft)	Name	Casing Diameter (in)	Hole Diameter (in)	
5,967.9	5,661.0	7"	0.000	0.000	

Formations					
Measured Depth (ft)	Vertical Depth (ft)	Name	Lithology	Dip (°)	Dip Direction (°)
5,585.8	5,527.0	Top Niobrara		0.00	

Plan Annotations					
Measured Depth (ft)	Vertical Depth (ft)	Local Coordinates		Comment	
		+N/-S (ft)	+E/-W (ft)		
1,100.0	1,100.0	0.0	0.0	KOP @ 1100' MD	
1,300.0	1,299.8	6.8	1.7	EOB; 4°	
5,186.1	5,176.5	270.1	66.0	Start 11° Build	
5,967.9	5,661.0	774.9	189.3	LP @ 5967' MD	
6,425.5	5,661.0	1,228.1	243.9	EOT; 0° Az	
13,066.1	5,661.0	7,868.7	244.2	PBHL @ 13066' MD	



**CATHEDRAL**

**Whiting Petroleum  
Corporation**

Weld County, CO  
S26-T10N-R58W  
Razor #26I-2316B  
HZ  
Plan #2

**Anticollision Report**

30 July, 2013



**CATHEDRAL**

<b>Company:</b>	Whiting Petroleum Corporation	<b>Local Co-ordinate Reference:</b>	Well Razor #26I-2316B
<b>Project:</b>	Weld County, CO	<b>TVD Reference:</b>	KB=16.5' @ 4728.2ft (Original Well Elev)
<b>Reference Site:</b>	S26-T10N-R58W	<b>MD Reference:</b>	KB=16.5' @ 4728.2ft (Original Well Elev)
<b>Site Error:</b>	0.0ft	<b>North Reference:</b>	Grid
<b>Reference Well:</b>	Razor #26I-2316B	<b>Survey Calculation Method:</b>	Minimum Curvature
<b>Well Error:</b>	0.0ft	<b>Output errors are at</b>	2.00 sigma
<b>Reference Wellbore</b>	HZ	<b>Database:</b>	USA EDM 5000 Multi Users DB
<b>Reference Design:</b>	Plan #2	<b>Offset TVD Reference:</b>	Offset Datum

<b>Reference</b>	Plan #2
<b>Filter type:</b>	NO GLOBAL FILTER: Using user defined selection & filtering criteria
<b>Interpolation Method:</b>	Stations
<b>Depth Range:</b>	Unlimited
<b>Results Limited by:</b>	Maximum center-center distance of 500.0ft
<b>Warning Levels Evaluated at:</b>	2.00 Sigma
<b>Error Model:</b>	Systematic Ellipse
<b>Scan Method:</b>	Closest Approach 3D
<b>Error Surface:</b>	Elliptical Conic

<b>Survey Tool Program</b>	Date	7/30/2013
<b>From (ft)</b>	<b>To (ft)</b>	<b>Survey (Wellbore)</b>
0.0	13,065.8	Plan #2 (HZ)
		<b>Tool Name</b>
		ISCWSA MWD
		<b>Description</b>
		MWD - ISCWSA

Site Name	Reference	Offset	Distance		Separation Factor	Warning
	Measured Depth (ft)	Measured Depth (ft)	Between Centres (ft)	Between Ellipses (ft)		
<b>Offset Well - Wellbore - Design</b>						
S11-T10N-R58W						
Razor #11G-1411A - HZ - Plan #1						Out of range
Razor #11G-1412B - HZ - Plan #1						Out of range
Razor #11H-1413A - HZ - Plan #1						Out of range
Razor #11H-1415A - HZ - Plan #1						Out of range
Razor #11H-1416B - HZ - Plan #1						Out of range
S12-T10N-R58W						
Razor #12F-1302B - HZ - Plan #1						Out of range
Razor #12F-1304B - HZ - Plan #1						Out of range
S26-T10N-R58W						
Razor #26I-2313A - HZ - Plan #1	500.0	500.0	81.9	79.9	41.235	CC, ES
Razor #26I-2313A - HZ - Plan #1	5,100.0	5,087.2	274.9	250.7	11.365	SF
Razor #26I-2314B - HZ - Plan #1	700.0	700.0	65.4	62.5	22.657	CC, ES
Razor #26I-2314B - HZ - Plan #1	5,200.0	5,193.5	230.5	205.4	9.204	SF
Razor #26I-2315A - HZ - Plan #2	900.0	900.0	81.9	78.1	21.639	CC
Razor #26I-2315A - HZ - Plan #2	13,066.1	12,867.8	341.8	52.7	1.182	Level 2, ES, SF
Razor Federal #26I-3513A - HZ - Plan #2	1,571.6	1,572.0	79.9	73.2	11.990	CC
Razor Federal #26I-3513A - HZ - Plan #2	1,600.0	1,600.2	80.0	73.2	11.779	ES
Razor Federal #26I-3513A - HZ - Plan #2	1,800.0	1,798.2	86.0	78.3	11.167	SF
Razor Federal #26I-3514B - HZ - Plan #2	754.7	754.7	32.8	29.7	10.649	CC
Razor Federal #26I-3514B - HZ - Plan #2	800.0	800.0	32.9	29.7	10.081	ES
Razor Federal #26I-3514B - HZ - Plan #2	1,100.0	1,099.2	40.5	35.9	8.878	SF
Razor Federal #26I-3515A - HZ - Plan #3	1,512.1	1,513.1	14.4	7.8	2.200	CC, ES, SF
Razor Federal #26I-3516B - HZ - Plan #3	1,100.0	1,100.0	33.1	28.4	7.061	CC, ES
Razor Federal #26I-3516B - HZ - Plan #3	1,200.0	1,199.3	33.6	28.5	6.592	SF
Razor Federal #26J-2311A - HZ - Plan #1						Out of range
Razor Federal #26J-2312B - HZ - Plan #1						Out of range

CC - Min centre to center distance or convergent point, SF - min separation factor, ES - min ellipse separation

<b>Company:</b>	Whiting Petroleum Corporation	<b>Local Co-ordinate Reference:</b>	Well Razor #261-2316B
<b>Project:</b>	Weld County, CO	<b>TVD Reference:</b>	KB=16.5' @ 4728.2ft (Original Well Elev)
<b>Reference Site:</b>	S26-T10N-R58W	<b>MD Reference:</b>	KB=16.5' @ 4728.2ft (Original Well Elev)
<b>Site Error:</b>	0.0ft	<b>North Reference:</b>	Grid
<b>Reference Well:</b>	Razor #261-2316B	<b>Survey Calculation Method:</b>	Minimum Curvature
<b>Well Error:</b>	0.0ft	<b>Output errors are at</b>	2.00 sigma
<b>Reference Wellbore</b>	HZ	<b>Database:</b>	USA EDM 5000 Multi Users DB
<b>Reference Design:</b>	Plan #2	<b>Offset TVD Reference:</b>	Offset Datum

Offset Design													Offset Site Error:	0.0 ft	
Survey Program: 0-ISCSWA MWD													Offset Well Error:		0.0 ft
Reference: S26-T10N-R58W - Razor #261-2313A - HZ - Plan #1															
Offset				Semi Major Axis			Distance								
Measured Depth (ft)	Vertical Depth (ft)	Measured Depth (ft)	Vertical Depth (ft)	Reference (ft)	Offset (ft)	Highside Toolface (°)	Offset Wellbore Centre +N/-S (ft)	+E/-W (ft)	Between Centres (ft)	Between Ellipses (ft)	Total Uncertainty Axis	Separation Factor	Warning		
0.0	0.0	0.0	0.0	0.0	0.0	-24.90	74.3	-34.5	81.9						
100.0	100.0	100.0	100.0	0.1	0.1	-24.90	74.3	-34.5	81.9	81.7	0.19	436.301			
200.0	200.0	200.0	200.0	0.3	0.3	-24.90	74.3	-34.5	81.9	81.2	0.64	128.505			
300.0	300.0	300.0	300.0	0.5	0.5	-24.90	74.3	-34.5	81.9	80.8	1.09	75.349			
400.0	400.0	400.0	400.0	0.8	0.8	-24.90	74.3	-34.5	81.9	80.3	1.54	53.301			
500.0	500.0	500.0	500.0	1.0	1.0	-24.90	74.3	-34.5	81.9	79.9	1.99	41.235 CC, ES			
600.0	600.0	597.2	597.2	1.2	1.2	-25.03	75.7	-35.3	83.6	81.1	2.43	34.417			
700.0	700.0	694.2	694.0	1.4	1.4	-25.41	79.9	-37.9	88.6	85.7	2.87	30.837			
800.0	800.0	793.8	793.4	1.7	1.7	-25.87	85.8	-41.6	95.6	92.2	3.32	28.744			
900.0	900.0	893.5	892.9	1.9	1.9	-26.27	91.7	-45.3	102.5	98.7	3.77	27.172			
1,000.0	1,000.0	993.3	992.4	2.1	2.1	-26.62	97.6	-48.9	109.4	105.2	4.22	25.927			
1,100.0	1,100.0	1,093.0	1,091.9	2.3	2.4	-26.92	103.5	-52.6	116.4	111.7	4.67	24.916			
1,200.0	1,200.0	1,192.9	1,191.5	2.6	2.6	-41.39	109.4	-56.2	122.0	116.9	5.12	23.820			
1,300.0	1,299.8	1,292.7	1,291.1	2.8	2.9	-43.16	115.4	-59.9	125.1	119.6	5.57	22.462			
1,400.0	1,399.6	1,392.6	1,390.7	3.0	3.1	-45.43	121.3	-63.6	127.1	121.1	6.02	21.100			
1,500.0	1,499.4	1,492.4	1,490.3	3.2	3.4	-47.63	127.2	-67.2	129.3	122.8	6.48	19.949			
1,600.0	1,599.1	1,592.3	1,589.9	3.5	3.6	-49.76	133.1	-70.9	131.7	124.7	6.94	18.967			
1,700.0	1,698.9	1,692.1	1,689.6	3.7	3.9	-51.81	139.1	-74.6	134.2	126.8	7.41	18.123			
1,800.0	1,798.6	1,792.0	1,789.2	4.0	4.2	-53.78	145.0	-78.2	136.9	129.0	7.87	17.393			
1,900.0	1,898.4	1,891.8	1,888.8	4.2	4.4	-55.67	150.9	-81.9	139.8	131.4	8.34	16.757			
2,000.0	1,998.1	1,991.7	1,988.4	4.4	4.7	-57.48	156.8	-85.6	142.8	134.0	8.81	16.200			
2,100.0	2,097.9	2,091.6	2,088.0	4.7	4.9	-59.22	162.8	-89.2	145.9	136.6	9.29	15.710			
2,200.0	2,197.6	2,191.4	2,187.6	4.9	5.2	-60.88	168.7	-92.9	149.2	139.4	9.77	15.277			
2,300.0	2,297.4	2,291.3	2,287.2	5.2	5.4	-62.47	174.6	-96.6	152.6	142.4	10.25	14.892			
2,400.0	2,397.2	2,391.1	2,386.8	5.4	5.7	-63.99	180.5	-100.2	156.1	145.4	10.73	14.549			
2,500.0	2,496.9	2,491.0	2,486.5	5.7	5.9	-65.44	186.4	-103.9	159.7	148.5	11.21	14.242			
2,600.0	2,596.7	2,590.8	2,586.1	5.9	6.2	-66.83	192.4	-107.6	163.4	151.7	11.70	13.967			
2,700.0	2,696.4	2,690.7	2,685.7	6.2	6.5	-68.15	198.3	-111.2	167.2	155.0	12.19	13.719			
2,800.0	2,796.2	2,790.5	2,785.3	6.4	6.7	-69.42	204.2	-114.9	171.1	158.4	12.68	13.495			
2,900.0	2,895.9	2,890.4	2,884.9	6.7	7.0	-70.63	210.1	-118.5	175.1	161.9	13.17	13.293			
3,000.0	2,995.7	2,990.2	2,984.5	6.9	7.2	-71.78	216.1	-122.2	179.1	165.5	13.66	13.109			
3,100.0	3,095.5	3,090.1	3,084.1	7.2	7.5	-72.88	222.0	-125.9	183.2	169.1	14.16	12.941			
3,200.0	3,195.2	3,190.0	3,183.7	7.4	7.7	-73.94	227.9	-129.5	187.4	172.8	14.65	12.789			
3,300.0	3,295.0	3,289.8	3,283.3	7.7	8.0	-74.95	233.8	-133.2	191.6	176.5	15.15	12.649			
3,400.0	3,394.7	3,389.7	3,383.0	7.9	8.2	-75.91	239.8	-136.9	195.9	180.3	15.65	12.521			
3,500.0	3,494.5	3,489.5	3,482.6	8.2	8.5	-76.83	245.7	-140.5	200.3	184.1	16.15	12.404			
3,600.0	3,594.2	3,589.4	3,582.2	8.4	8.8	-77.72	251.6	-144.2	204.7	188.0	16.65	12.296			
3,700.0	3,694.0	3,689.2	3,681.8	8.7	9.0	-78.56	257.5	-147.9	209.1	192.0	17.15	12.197			
3,800.0	3,793.7	3,789.1	3,781.4	9.0	9.3	-79.37	263.4	-151.5	213.6	196.0	17.65	12.105			
3,900.0	3,893.5	3,888.9	3,881.0	9.2	9.5	-80.15	269.4	-155.2	218.1	200.0	18.15	12.020			
4,000.0	3,993.3	3,988.8	3,980.6	9.5	9.8	-80.90	275.3	-158.9	222.7	204.1	18.65	11.942			
4,100.0	4,093.0	4,088.7	4,080.2	9.7	10.0	-81.61	281.2	-162.5	227.3	208.2	19.15	11.869			
4,200.0	4,192.8	4,188.5	4,179.8	10.0	10.3	-82.30	287.1	-166.2	231.9	212.3	19.65	11.801			
4,300.0	4,292.5	4,288.4	4,279.5	10.2	10.6	-82.96	293.1	-169.9	236.6	216.5	20.16	11.738			
4,400.0	4,392.3	4,388.2	4,379.1	10.5	10.8	-83.60	299.0	-173.5	241.3	220.6	20.66	11.680			
4,500.0	4,492.0	4,488.1	4,478.7	10.7	11.1	-84.21	304.9	-177.2	246.0	224.9	21.16	11.625			
4,600.0	4,591.8	4,587.9	4,578.3	11.0	11.3	-84.79	310.8	-180.9	250.8	229.1	21.67	11.574			
4,700.0	4,691.6	4,687.8	4,677.9	11.2	11.6	-85.36	316.8	-184.5	255.6	233.4	22.17	11.527			
4,800.0	4,791.3	4,787.6	4,777.5	11.5	11.8	-85.90	322.7	-188.2	260.4	237.7	22.68	11.482			
4,900.0	4,891.1	4,887.5	4,877.1	11.8	12.1	-86.43	328.6	-191.9	265.2	242.0	23.18	11.441			
5,000.0	4,990.8	4,987.3	4,976.7	12.0	12.4	-86.93	334.5	-195.5	270.0	246.4	23.68	11.402			
5,100.0	5,090.6	5,087.2	5,076.3	12.3	12.6	-87.42	340.4	-199.2	274.9	250.7	24.19	11.365 SF			

CC - Min centre to center distance or convergent point, SF - min separation factor, ES - min ellipse separation

<b>Company:</b>	Whiting Petroleum Corporation	<b>Local Co-ordinate Reference:</b>	Well Razor #26I-2316B
<b>Project:</b>	Weld County, CO	<b>TVD Reference:</b>	KB=16.5' @ 4728.2ft (Original Well Elev)
<b>Reference Site:</b>	S26-T10N-R58W	<b>MD Reference:</b>	KB=16.5' @ 4728.2ft (Original Well Elev)
<b>Site Error:</b>	0.0ft	<b>North Reference:</b>	Grid
<b>Reference Well:</b>	Razor #26I-2316B	<b>Survey Calculation Method:</b>	Minimum Curvature
<b>Well Error:</b>	0.0ft	<b>Output errors are at</b>	2.00 sigma
<b>Reference Wellbore</b>	HZ	<b>Database:</b>	USA EDM 5000 Multi Users DB
<b>Reference Design:</b>	Plan #2	<b>Offset TVD Reference:</b>	Offset Datum

Offset Design													Offset Site Error:	0.0 ft	
Survey Program: 0-ISWWSA MWD													Offset Well Error:		0.0 ft
Reference: S26-T10N-R58W - Razor #26I-2313A - HZ - Plan #1															
Reference				Offset				Semi Major Axis		Distance				Warning	
Measured Depth (ft)	Vertical Depth (ft)	Measured Depth (ft)	Vertical Depth (ft)	Reference (ft)	Offset (ft)	Highside Toolface (°)	Offset Wellbore Centre +N/-S (ft)	+E/-W (ft)	Between Centres (ft)	Between Ellipses (ft)	Total Uncertainty Axis	Separation Factor			
5,186.1	5,176.5	5,150.0	5,138.8	12.5	12.8	-87.39	346.2	-202.7	281.8	257.3	24.57	11.470			
5,200.0	5,190.3	5,162.2	5,150.7	12.5	12.8	-87.10	348.0	-203.9	283.6	259.0	24.64	11.510			
5,250.0	5,239.8	5,200.0	5,187.6	12.7	13.0	-86.21	355.2	-208.3	291.5	266.6	24.90	11.709			
5,300.0	5,288.3	5,231.5	5,217.8	12.9	13.1	-85.41	362.9	-213.1	301.5	276.3	25.18	11.974			
5,350.0	5,335.5	5,265.2	5,249.4	13.1	13.3	-84.70	372.8	-219.2	313.5	288.0	25.51	12.289			
5,400.0	5,380.9	5,300.0	5,281.1	13.3	13.5	-84.10	384.9	-226.7	327.5	301.6	25.89	12.647			
5,450.0	5,424.0	5,330.1	5,307.8	13.7	13.7	-83.39	396.7	-234.0	343.3	317.0	26.30	13.050			
5,500.0	5,464.6	5,361.1	5,334.4	14.0	13.9	-82.70	410.3	-242.4	360.8	334.0	26.76	13.482			
5,550.0	5,502.2	5,391.2	5,359.2	14.4	14.1	-81.94	424.7	-251.3	379.9	352.7	27.26	13.940			
5,600.0	5,536.4	5,420.3	5,382.3	14.8	14.3	-81.09	439.8	-260.7	400.6	372.9	27.79	14.416			
5,650.0	5,567.0	5,450.0	5,404.8	15.3	14.6	-80.21	456.3	-270.9	422.8	394.4	28.37	14.902			
5,700.0	5,593.6	5,475.6	5,423.2	15.9	14.8	-79.01	471.4	-280.2	446.2	417.2	28.95	15.410			
5,750.0	5,616.1	5,500.0	5,440.0	16.4	15.1	-77.64	486.5	-289.6	470.8	441.2	29.55	15.934			
5,800.0	5,634.2	5,527.2	5,457.6	17.1	15.4	-76.40	504.1	-300.4	496.4	466.2	30.20	16.435			

<b>Company:</b>	Whiting Petroleum Corporation	<b>Local Co-ordinate Reference:</b>	Well Razor #261-2316B
<b>Project:</b>	Weld County, CO	<b>TVD Reference:</b>	KB=16.5' @ 4728.2ft (Original Well Elev)
<b>Reference Site:</b>	S26-T10N-R58W	<b>MD Reference:</b>	KB=16.5' @ 4728.2ft (Original Well Elev)
<b>Site Error:</b>	0.0ft	<b>North Reference:</b>	Grid
<b>Reference Well:</b>	Razor #261-2316B	<b>Survey Calculation Method:</b>	Minimum Curvature
<b>Well Error:</b>	0.0ft	<b>Output errors are at</b>	2.00 sigma
<b>Reference Wellbore</b>	HZ	<b>Database:</b>	USA EDM 5000 Multi Users DB
<b>Reference Design:</b>	Plan #2	<b>Offset TVD Reference:</b>	Offset Datum

Offset Design S26-T10N-R58W - Razor #261-2314B - HZ - Plan #1													Offset Site Error:	0.0 ft	
Survey Program: 0-ISCSWA MWD													Offset Well Error:	0.0 ft	
Reference				Offset			Semi Major Axis			Distance			Total Uncertainty Axis	Separation Factor	Warning
Measured Depth (ft)	Vertical Depth (ft)	Measured Depth (ft)	Vertical Depth (ft)	Reference (ft)	Offset (ft)	Highside Toolface (°)	Offset Wellbore Centre +N/-S (ft)	+E/-W (ft)	Between Centres (ft)	Between Ellipses (ft)					
0.0	0.0	0.0	0.0	0.0	0.0	-91.07	-1.2	-65.4	65.4						
100.0	100.0	100.0	100.0	0.1	0.1	-91.07	-1.2	-65.4	65.4	65.2	0.19	348.271			
200.0	200.0	200.0	200.0	0.3	0.3	-91.07	-1.2	-65.4	65.4	64.7	0.64	102.577			
300.0	300.0	300.0	300.0	0.5	0.5	-91.07	-1.2	-65.4	65.4	64.3	1.09	60.146			
400.0	400.0	400.0	400.0	0.8	0.8	-91.07	-1.2	-65.4	65.4	63.8	1.54	42.547			
500.0	500.0	500.0	500.0	1.0	1.0	-91.07	-1.2	-65.4	65.4	63.4	1.99	32.915			
600.0	600.0	600.0	600.0	1.2	1.2	-91.07	-1.2	-65.4	65.4	62.9	2.44	26.840			
700.0	700.0	700.0	700.0	1.4	1.4	-91.07	-1.2	-65.4	65.4	62.5	2.88	22.657	CC, ES		
800.0	800.0	799.3	799.3	1.7	1.7	-89.65	0.4	-65.9	65.9	62.6	3.33	19.784			
900.0	900.0	898.3	898.2	1.9	1.9	-85.53	5.3	-67.5	67.8	64.0	3.78	17.938			
1,000.0	1,000.0	998.1	997.7	2.1	2.1	-80.34	11.9	-69.8	70.8	66.6	4.23	16.729			
1,100.0	1,100.0	1,097.8	1,097.2	2.3	2.4	-75.62	18.5	-72.0	74.4	69.7	4.69	15.855			
1,200.0	1,200.0	1,197.6	1,196.8	2.6	2.6	-86.27	25.1	-74.2	78.3	73.1	5.14	15.217			
1,300.0	1,299.8	1,297.6	1,296.4	2.8	2.8	-85.90	31.7	-76.5	82.0	76.4	5.60	14.643			
1,400.0	1,399.6	1,397.5	1,396.1	3.0	3.1	-86.80	38.3	-78.7	85.7	79.6	6.07	14.121			
1,500.0	1,499.4	1,497.4	1,495.8	3.2	3.3	-87.63	44.9	-80.9	89.4	82.8	6.54	13.664			
1,600.0	1,599.1	1,597.3	1,595.5	3.5	3.6	-88.39	51.5	-83.1	93.1	86.1	7.02	13.262			
1,700.0	1,698.9	1,697.3	1,695.2	3.7	3.8	-89.09	58.1	-85.4	96.8	89.3	7.50	12.906			
1,800.0	1,798.6	1,797.2	1,794.8	4.0	4.1	-89.74	64.7	-87.6	100.5	92.5	7.98	12.589			
1,900.0	1,898.4	1,897.1	1,894.5	4.2	4.3	-90.34	71.3	-89.8	104.3	95.8	8.47	12.306			
2,000.0	1,998.1	1,997.0	1,994.2	4.4	4.6	-90.91	77.9	-92.1	108.0	99.0	8.96	12.051			
2,100.0	2,097.9	2,097.0	2,093.9	4.7	4.8	-91.43	84.5	-94.3	111.8	102.3	9.45	11.822			
2,200.0	2,197.6	2,196.9	2,193.6	4.9	5.1	-91.92	91.1	-96.5	115.5	105.6	9.95	11.614			
2,300.0	2,297.4	2,296.8	2,293.3	5.2	5.3	-92.38	97.7	-98.7	119.3	108.9	10.44	11.425			
2,400.0	2,397.2	2,396.7	2,392.9	5.4	5.6	-92.81	104.3	-101.0	123.1	112.1	10.94	11.252			
2,500.0	2,496.9	2,496.7	2,492.6	5.7	5.8	-93.22	110.9	-103.2	126.9	115.4	11.44	11.094			
2,600.0	2,596.7	2,596.6	2,592.3	5.9	6.1	-93.60	117.5	-105.4	130.7	118.7	11.93	10.948			
2,700.0	2,696.4	2,696.5	2,692.0	6.2	6.4	-93.96	124.1	-107.7	134.5	122.0	12.43	10.814			
2,800.0	2,796.2	2,796.4	2,791.7	6.4	6.6	-94.30	130.7	-109.9	138.3	125.3	12.93	10.690			
2,900.0	2,895.9	2,896.4	2,891.3	6.7	6.9	-94.62	137.3	-112.1	142.1	128.6	13.43	10.575			
3,000.0	2,995.7	2,996.3	2,991.0	6.9	7.1	-94.93	143.9	-114.3	145.9	132.0	13.94	10.468			
3,100.0	3,095.5	3,096.2	3,090.7	7.2	7.4	-95.22	150.5	-116.6	149.7	135.3	14.44	10.369			
3,200.0	3,195.2	3,196.1	3,190.4	7.4	7.6	-95.49	157.1	-118.8	153.5	138.6	14.94	10.276			
3,300.0	3,295.0	3,296.1	3,290.1	7.7	7.9	-95.75	163.8	-121.0	157.3	141.9	15.44	10.189			
3,400.0	3,394.7	3,396.0	3,389.7	7.9	8.1	-96.00	170.4	-123.3	161.2	145.2	15.95	10.107			
3,500.0	3,494.5	3,495.9	3,489.4	8.2	8.4	-96.24	177.0	-125.5	165.0	148.6	16.45	10.031			
3,600.0	3,594.2	3,595.8	3,589.1	8.4	8.7	-96.47	183.6	-127.7	168.8	151.9	16.95	9.959			
3,700.0	3,694.0	3,695.8	3,688.8	8.7	8.9	-96.69	190.2	-129.9	172.7	155.2	17.46	9.891			
3,800.0	3,793.7	3,795.7	3,788.5	9.0	9.2	-96.89	196.8	-132.2	176.5	158.5	17.96	9.827			
3,900.0	3,893.5	3,895.6	3,888.1	9.2	9.4	-97.09	203.4	-134.4	180.3	161.9	18.47	9.766			
4,000.0	3,993.3	3,995.5	3,987.8	9.5	9.7	-97.28	210.0	-136.6	184.2	165.2	18.97	9.709			
4,100.0	4,093.0	4,095.5	4,087.5	9.7	9.9	-97.47	216.6	-138.9	188.0	168.6	19.48	9.654			
4,200.0	4,192.8	4,195.4	4,187.2	10.0	10.2	-97.64	223.2	-141.1	191.9	171.9	19.98	9.603			
4,300.0	4,292.5	4,295.3	4,286.9	10.2	10.4	-97.81	229.8	-143.3	195.7	175.2	20.49	9.554			
4,400.0	4,392.3	4,395.2	4,386.6	10.5	10.7	-97.97	236.4	-145.6	199.6	178.6	20.99	9.507			
4,500.0	4,492.0	4,495.2	4,486.2	10.7	11.0	-98.13	243.0	-147.8	203.4	181.9	21.50	9.462			
4,600.0	4,591.8	4,595.1	4,585.9	11.0	11.2	-98.28	249.6	-150.0	207.3	185.3	22.00	9.420			
4,700.0	4,691.6	4,695.0	4,685.6	11.2	11.5	-98.42	256.2	-152.2	211.1	188.6	22.51	9.379			
4,800.0	4,791.3	4,794.9	4,785.3	11.5	11.7	-98.56	262.8	-154.5	215.0	192.0	23.02	9.340			
4,900.0	4,891.1	4,894.8	4,885.0	11.8	12.0	-98.70	269.4	-156.7	218.8	195.3	23.52	9.303			
5,000.0	4,990.8	4,994.8	4,984.6	12.0	12.2	-98.83	276.0	-158.9	222.7	198.7	24.03	9.268			
5,100.0	5,090.6	5,094.7	5,084.3	12.3	12.5	-98.95	282.6	-161.2	226.6	202.0	24.54	9.234			

CC - Min centre to center distance or convergent point, SF - min separation factor, ES - min ellipse separation

<b>Company:</b>	Whiting Petroleum Corporation	<b>Local Co-ordinate Reference:</b>	Well Razor #261-2316B
<b>Project:</b>	Weld County, CO	<b>TVD Reference:</b>	KB=16.5' @ 4728.2ft (Original Well Elev)
<b>Reference Site:</b>	S26-T10N-R58W	<b>MD Reference:</b>	KB=16.5' @ 4728.2ft (Original Well Elev)
<b>Site Error:</b>	0.0ft	<b>North Reference:</b>	Grid
<b>Reference Well:</b>	Razor #261-2316B	<b>Survey Calculation Method:</b>	Minimum Curvature
<b>Well Error:</b>	0.0ft	<b>Output errors are at</b>	2.00 sigma
<b>Reference Wellbore</b>	HZ	<b>Database:</b>	USA EDM 5000 Multi Users DB
<b>Reference Design:</b>	Plan #2	<b>Offset TVD Reference:</b>	Offset Datum

Offset Design													Offset Site Error:	0.0 ft
S26-T10N-R58W - Razor #261-2314B - HZ - Plan #1													Offset Well Error:	0.0 ft
Survey Program: 0-ISCSWA MWD														
Reference				Offset			Semi Major Axis			Distance				
Measured Depth (ft)	Vertical Depth (ft)	Measured Depth (ft)	Vertical Depth (ft)	Reference (ft)	Offset (ft)	Highside Toolface (°)	Offset Wellbore Centre +N/-S (ft)	+E/-W (ft)	Between Centres (ft)	Between Ellipses (ft)	Total Uncertainty Axis	Separation Factor	Warning	
5,186.1	5,176.5	5,180.7	5,170.1	12.5	12.7	-99.06	288.3	-163.1	229.9	204.9	24.97	9.205		
5,200.0	5,190.3	5,193.5	5,182.9	12.5	12.7	-99.04	289.2	-163.4	230.5	205.4	25.04	9.204 SF		
5,250.0	5,239.8	5,236.0	5,225.0	12.7	12.9	-98.96	294.1	-165.0	234.0	208.7	25.31	9.247		
5,300.0	5,288.3	5,278.2	5,266.3	12.9	13.0	-98.82	302.2	-167.8	239.9	214.3	25.62	9.363		
5,350.0	5,335.5	5,320.1	5,306.5	13.1	13.2	-98.61	313.4	-171.5	248.1	222.1	25.99	9.544		
5,400.0	5,380.9	5,361.6	5,345.3	13.3	13.4	-98.31	327.4	-176.3	258.4	232.0	26.42	9.783		
5,450.0	5,424.0	5,400.0	5,380.0	13.7	13.6	-97.83	343.0	-181.5	270.9	244.0	26.88	10.078		
5,500.0	5,464.6	5,443.2	5,417.5	14.0	13.9	-97.36	363.3	-188.4	285.3	257.9	27.45	10.397		
5,550.0	5,502.2	5,483.2	5,450.5	14.4	14.2	-96.70	384.7	-195.6	301.7	273.6	28.06	10.750		
5,600.0	5,536.4	5,522.6	5,481.3	14.8	14.5	-95.90	408.1	-203.5	319.7	291.0	28.75	11.120		
5,650.0	5,567.0	5,561.6	5,509.7	15.3	14.8	-94.96	433.3	-212.0	339.3	309.8	29.51	11.500		
5,700.0	5,593.6	5,600.0	5,535.8	15.9	15.2	-93.88	460.0	-221.0	360.4	330.0	30.33	11.880		
5,750.0	5,616.1	5,638.3	5,559.6	16.4	15.6	-92.69	488.4	-230.6	382.6	351.4	31.23	12.252		
5,800.0	5,634.2	5,676.2	5,580.9	17.1	16.0	-91.38	518.1	-240.6	406.0	373.8	32.19	12.613		
5,850.0	5,647.7	5,713.9	5,599.8	17.7	16.5	-89.97	549.0	-251.0	430.3	397.1	33.20	12.962		
5,900.0	5,656.6	5,750.0	5,615.7	18.4	16.9	-88.42	579.7	-261.4	455.4	421.1	34.23	13.303		
5,950.0	5,660.7	5,789.4	5,630.4	19.1	17.4	-86.97	614.3	-273.1	481.0	445.6	35.34	13.609		
5,967.9	5,661.0	5,803.0	5,634.8	19.4	17.6	-86.42	626.5	-277.2	490.3	454.5	35.74	13.718		

<b>Company:</b>	Whiting Petroleum Corporation	<b>Local Co-ordinate Reference:</b>	Well Razor #261-2316B
<b>Project:</b>	Weld County, CO	<b>TVD Reference:</b>	KB=16.5' @ 4728.2ft (Original Well Elev)
<b>Reference Site:</b>	S26-T10N-R58W	<b>MD Reference:</b>	KB=16.5' @ 4728.2ft (Original Well Elev)
<b>Site Error:</b>	0.0ft	<b>North Reference:</b>	Grid
<b>Reference Well:</b>	Razor #261-2316B	<b>Survey Calculation Method:</b>	Minimum Curvature
<b>Well Error:</b>	0.0ft	<b>Output errors are at</b>	2.00 sigma
<b>Reference Wellbore</b>	HZ	<b>Database:</b>	USA EDM 5000 Multi Users DB
<b>Reference Design:</b>	Plan #2	<b>Offset TVD Reference:</b>	Offset Datum

Offset Design													Offset Site Error:	0.0 ft	
Survey Program: 0-ISCSWA MWD													Offset Well Error:		0.0 ft
Reference: S26-T10N-R58W - Razor #261-2315A - HZ - Plan #2															
Offset				Semi Major Axis			Distance								
Measured Depth (ft)	Vertical Depth (ft)	Measured Depth (ft)	Vertical Depth (ft)	Reference (ft)	Offset (ft)	Highside Toolface (°)	Offset Wellbore Centre +N/-S (ft)	+E/-W (ft)	Between Centres (ft)	Between Ellipses (ft)	Total Uncertainty Axis	Separation Factor	Warning		
0.0	0.0	0.0	0.0	0.0	0.0	22.74	75.5	31.6	81.9						
100.0	100.0	100.0	100.0	0.1	0.1	22.74	75.5	31.6	81.9	81.7	0.19	436.282			
200.0	200.0	200.0	200.0	0.3	0.3	22.74	75.5	31.6	81.9	81.2	0.64	128.499			
300.0	300.0	300.0	300.0	0.5	0.5	22.74	75.5	31.6	81.9	80.8	1.09	75.346			
400.0	400.0	400.0	400.0	0.8	0.8	22.74	75.5	31.6	81.9	80.3	1.54	53.299			
500.0	500.0	500.0	500.0	1.0	1.0	22.74	75.5	31.6	81.9	79.9	1.99	41.233			
600.0	600.0	600.0	600.0	1.2	1.2	22.74	75.5	31.6	81.9	79.4	2.44	33.622			
700.0	700.0	700.0	700.0	1.4	1.4	22.74	75.5	31.6	81.9	79.0	2.88	28.383			
800.0	800.0	800.0	800.0	1.7	1.7	22.74	75.5	31.6	81.9	78.5	3.33	24.557			
900.0	900.0	900.0	900.0	1.9	1.9	22.74	75.5	31.6	81.9	78.1	3.78	21.639 CC			
1,000.0	1,000.0	997.5	997.5	2.1	2.1	22.16	77.2	31.4	83.4	79.1	4.23	19.714			
1,100.0	1,100.0	1,094.9	1,094.7	2.3	2.3	20.57	82.1	30.8	87.8	83.2	4.68	18.786			
1,200.0	1,200.0	1,194.6	1,194.2	2.6	2.6	4.93	89.0	29.9	92.3	87.2	5.12	18.023			
1,300.0	1,299.8	1,294.5	1,293.9	2.8	2.8	3.33	95.9	29.0	93.4	87.9	5.57	16.781			
1,400.0	1,399.6	1,394.5	1,393.6	3.0	3.0	1.81	102.8	28.1	92.8	86.8	6.02	15.421			
1,500.0	1,499.4	1,494.5	1,493.3	3.2	3.3	0.26	109.7	27.2	92.3	85.9	6.47	14.260			
1,600.0	1,599.1	1,594.4	1,593.1	3.5	3.5	-1.30	116.6	26.4	91.9	85.0	6.93	13.259			
1,700.0	1,698.9	1,694.4	1,692.8	3.7	3.8	-2.88	123.6	25.5	91.5	84.1	7.39	12.390			
1,800.0	1,798.6	1,794.4	1,792.5	4.0	4.0	-4.46	130.5	24.6	91.2	83.4	7.84	11.631			
1,900.0	1,898.4	1,894.3	1,892.2	4.2	4.2	-6.06	137.4	23.7	91.0	82.7	8.30	10.963			
2,000.0	1,998.1	1,994.3	1,992.0	4.4	4.5	-7.66	144.3	22.8	90.8	82.1	8.76	10.372			
2,100.0	2,097.9	2,094.3	2,091.7	4.7	4.7	-9.27	151.2	21.9	90.7	81.5	9.21	9.847			
2,176.7	2,174.4	2,171.0	2,168.2	4.9	4.9	-10.50	156.5	21.2	90.7	81.1	9.56	9.483			
2,200.0	2,197.6	2,194.2	2,191.4	4.9	5.0	-10.88	158.1	21.0	90.7	81.0	9.67	9.379			
2,300.0	2,297.4	2,294.2	2,291.1	5.2	5.2	-12.49	165.1	20.1	90.8	80.6	10.13	8.959			
2,400.0	2,397.2	2,394.2	2,390.9	5.4	5.5	-14.09	172.0	19.2	90.9	80.3	10.59	8.582			
2,500.0	2,496.9	2,494.1	2,490.6	5.7	5.7	-15.69	178.9	18.3	91.1	80.0	11.05	8.242			
2,600.0	2,596.7	2,594.1	2,590.3	5.9	6.0	-17.29	185.8	17.5	91.3	79.8	11.51	7.935			
2,700.0	2,696.4	2,694.1	2,690.0	6.2	6.3	-18.87	192.7	16.6	91.7	79.7	11.97	7.656			
2,800.0	2,796.2	2,794.0	2,789.8	6.4	6.5	-20.44	199.6	15.7	92.1	79.6	12.44	7.403			
2,900.0	2,895.9	2,894.0	2,889.5	6.7	6.8	-21.99	206.6	14.8	92.6	79.7	12.91	7.172			
3,000.0	2,995.7	2,994.0	2,989.2	6.9	7.0	-23.53	213.5	13.9	93.1	79.7	13.37	6.962			
3,100.0	3,095.5	3,094.0	3,088.9	7.2	7.3	-25.05	220.4	13.0	93.7	79.9	13.84	6.770			
3,200.0	3,195.2	3,193.9	3,188.7	7.4	7.5	-26.55	227.3	12.1	94.4	80.1	14.31	6.594			
3,300.0	3,295.0	3,293.9	3,288.4	7.7	7.8	-28.02	234.2	11.2	95.1	80.3	14.79	6.433			
3,400.0	3,394.7	3,393.9	3,388.1	7.9	8.0	-29.47	241.1	10.3	95.9	80.7	15.26	6.284			
3,500.0	3,494.5	3,493.8	3,487.8	8.2	8.3	-30.90	248.1	9.5	96.8	81.0	15.74	6.148			
3,600.0	3,594.2	3,593.8	3,587.6	8.4	8.5	-32.30	255.0	8.6	97.7	81.5	16.22	6.023			
3,700.0	3,694.0	3,693.8	3,687.3	8.7	8.8	-33.68	261.9	7.7	98.7	82.0	16.70	5.908			
3,800.0	3,793.7	3,793.7	3,787.0	9.0	9.0	-35.02	268.8	6.8	99.7	82.5	17.18	5.802			
3,900.0	3,893.5	3,893.7	3,886.7	9.2	9.3	-36.34	275.7	5.9	100.8	83.1	17.67	5.704			
4,000.0	3,993.3	3,993.7	3,986.4	9.5	9.6	-37.63	282.6	5.0	101.9	83.8	18.16	5.613			
4,100.0	4,093.0	4,093.6	4,086.2	9.7	9.8	-38.89	289.6	4.1	103.1	84.5	18.65	5.530			
4,200.0	4,192.8	4,193.6	4,185.9	10.0	10.1	-40.12	296.5	3.2	104.3	85.2	19.14	5.452			
4,300.0	4,292.5	4,293.6	4,285.6	10.2	10.3	-41.32	303.4	2.3	105.6	86.0	19.63	5.381			
4,400.0	4,392.3	4,393.5	4,385.3	10.5	10.6	-42.50	310.3	1.4	107.0	86.8	20.13	5.314			
4,500.0	4,492.0	4,493.5	4,485.1	10.7	10.8	-43.64	317.2	0.6	108.3	87.7	20.62	5.253			
4,600.0	4,591.8	4,593.5	4,584.8	11.0	11.1	-44.76	324.1	-0.3	109.7	88.6	21.12	5.196			
4,700.0	4,691.6	4,693.4	4,684.5	11.2	11.3	-45.84	331.1	-1.2	111.2	89.6	21.62	5.143			
4,800.0	4,791.3	4,793.4	4,784.2	11.5	11.6	-46.90	338.0	-2.1	112.7	90.6	22.12	5.094			
4,900.0	4,891.1	4,893.4	4,884.0	11.8	11.8	-47.93	344.9	-3.0	114.2	91.6	22.62	5.049			
5,000.0	4,990.8	4,993.3	4,983.7	12.0	12.1	-48.93	351.8	-3.9	115.8	92.7	23.13	5.007			

CC - Min centre to center distance or convergent point, SF - min separation factor, ES - min ellipse separation

<b>Company:</b>	Whiting Petroleum Corporation	<b>Local Co-ordinate Reference:</b>	Well Razor #261-2316B
<b>Project:</b>	Weld County, CO	<b>TVD Reference:</b>	KB=16.5' @ 4728.2ft (Original Well Elev)
<b>Reference Site:</b>	S26-T10N-R58W	<b>MD Reference:</b>	KB=16.5' @ 4728.2ft (Original Well Elev)
<b>Site Error:</b>	0.0ft	<b>North Reference:</b>	Grid
<b>Reference Well:</b>	Razor #261-2316B	<b>Survey Calculation Method:</b>	Minimum Curvature
<b>Well Error:</b>	0.0ft	<b>Output errors are at</b>	2.00 sigma
<b>Reference Wellbore</b>	HZ	<b>Database:</b>	USA EDM 5000 Multi Users DB
<b>Reference Design:</b>	Plan #2	<b>Offset TVD Reference:</b>	Offset Datum

Offset Design													Offset Site Error:	0.0 ft	
Survey Program: 0-ISCSWA MWD													Offset Well Error:		0.0 ft
Reference: S26-T10N-R58W - Razor #261-2315A - HZ - Plan #2															
Offset				Semi Major Axis			Distance								
Measured Depth (ft)	Vertical Depth (ft)	Measured Depth (ft)	Vertical Depth (ft)	Reference (ft)	Offset (ft)	Highside Toolface (°)	Offset Wellbore Centre +N/-S (ft)	+E/-W (ft)	Between Centres (ft)	Between Ellipses (ft)	Total Uncertainty Axis	Separation Factor	Warning		
5,100.0	5,090.6	5,093.3	5,083.4	12.3	12.4	-49.90	358.7	-4.8	117.4	93.8	23.63	4.967			
5,186.1	5,176.5	5,165.8	5,155.2	12.5	12.6	-49.61	367.9	-6.0	123.3	99.2	24.02	5.131			
5,200.0	5,190.3	5,177.2	5,166.4	12.5	12.6	-49.27	370.2	-6.3	125.0	101.0	24.07	5.194			
5,250.0	5,239.8	5,217.9	5,205.7	12.7	12.8	-48.49	380.5	-7.6	131.7	107.4	24.24	5.432			
5,300.0	5,288.3	5,258.2	5,243.8	12.9	13.0	-48.32	393.7	-9.3	138.6	114.2	24.37	5.686			
5,350.0	5,335.5	5,300.0	5,282.0	13.1	13.2	-48.71	410.4	-11.4	145.7	121.2	24.48	5.951			
5,400.0	5,380.9	5,337.6	5,315.2	13.3	13.4	-49.41	428.0	-13.7	153.0	128.4	24.58	6.225			
5,450.0	5,424.0	5,376.7	5,348.2	13.7	13.7	-50.49	448.8	-16.4	160.6	135.9	24.73	6.495			
5,500.0	5,464.6	5,415.5	5,379.3	14.0	14.0	-51.83	471.7	-19.3	168.5	143.5	24.95	6.752			
5,550.0	5,502.2	5,450.0	5,405.5	14.4	14.2	-53.11	494.0	-22.2	176.8	151.6	25.24	7.005			
5,600.0	5,536.4	5,492.1	5,435.3	14.8	14.6	-55.01	523.5	-26.0	185.4	159.6	25.79	7.191			
5,650.0	5,567.0	5,530.0	5,460.0	15.3	15.0	-56.74	552.0	-29.6	194.6	168.2	26.44	7.359			
5,700.0	5,593.6	5,567.7	5,482.5	15.9	15.3	-58.50	582.0	-33.5	204.3	177.0	27.27	7.490			
5,750.0	5,616.1	5,605.4	5,502.7	16.4	15.7	-60.26	613.5	-37.6	214.5	186.3	28.27	7.588			
5,800.0	5,634.2	5,642.9	5,520.5	17.1	16.2	-61.99	646.3	-41.8	225.3	195.9	29.43	7.658			
5,850.0	5,647.7	5,680.5	5,535.8	17.7	16.7	-63.67	680.3	-46.2	236.7	206.0	30.72	7.706			
5,900.0	5,656.6	5,718.2	5,548.7	18.4	17.1	-65.28	715.5	-50.7	248.6	216.5	32.11	7.743			
5,950.0	5,660.7	5,756.1	5,559.1	19.1	17.7	-66.82	751.6	-55.3	261.1	227.5	33.59	7.772			
5,967.9	5,661.0	5,769.8	5,562.2	19.4	17.8	-67.35	764.8	-57.0	265.6	231.5	34.14	7.781			
6,000.0	5,661.0	5,794.6	5,566.8	19.8	18.2	-69.11	789.0	-60.1	274.1	238.8	35.27	7.771			
6,100.0	5,661.0	5,875.0	5,574.0	21.2	19.4	-72.52	868.3	-70.3	301.6	263.2	38.36	7.862			
6,200.0	5,661.0	5,987.8	5,574.0	22.6	20.9	-74.21	980.5	-81.8	325.0	283.5	41.55	7.822			
6,300.0	5,661.0	6,106.9	5,574.0	24.0	22.6	-75.04	1,099.5	-86.6	337.8	293.0	44.79	7.543			
6,400.0	5,661.0	6,210.0	5,574.0	25.6	24.2	-75.25	1,202.6	-86.7	341.7	293.9	47.80	7.149			
6,425.5	5,661.0	6,235.5	5,574.0	26.0	24.6	-75.26	1,228.1	-86.7	341.9	293.3	48.56	7.040			
6,500.0	5,661.0	6,310.0	5,574.0	27.1	25.8	-75.26	1,302.6	-86.7	341.9	291.0	50.91	6.715			
6,600.0	5,661.0	6,410.0	5,574.0	28.8	27.5	-75.26	1,402.6	-86.7	341.9	287.7	54.15	6.314			
6,700.0	5,661.0	6,510.0	5,574.0	30.4	29.2	-75.26	1,502.6	-86.7	341.9	284.4	57.44	5.952			
6,800.0	5,661.0	6,610.0	5,574.0	32.1	31.0	-75.26	1,602.6	-86.7	341.9	281.1	60.78	5.624			
6,900.0	5,661.0	6,710.0	5,574.0	33.8	32.7	-75.26	1,702.6	-86.7	341.9	277.7	64.17	5.328			
7,000.0	5,661.0	6,810.0	5,574.0	35.6	34.5	-75.26	1,802.6	-86.7	341.9	274.3	67.59	5.058			
7,100.0	5,661.0	6,910.0	5,574.0	37.3	36.3	-75.26	1,902.6	-86.7	341.9	270.8	71.04	4.812			
7,200.0	5,661.0	7,010.0	5,574.0	39.1	38.1	-75.26	2,002.6	-86.7	341.9	267.3	74.52	4.587			
7,300.0	5,661.0	7,110.0	5,574.0	40.9	39.9	-75.26	2,102.6	-86.7	341.9	263.8	78.02	4.381			
7,400.0	5,661.0	7,210.0	5,574.0	42.7	41.7	-75.26	2,202.6	-86.7	341.9	260.3	81.55	4.192			
7,500.0	5,661.0	7,310.0	5,574.0	44.5	43.5	-75.26	2,302.6	-86.6	341.9	256.8	85.08	4.018			
7,600.0	5,661.0	7,410.0	5,574.0	46.3	45.3	-75.26	2,402.6	-86.6	341.8	253.2	88.64	3.857			
7,700.0	5,661.0	7,510.0	5,574.0	48.1	47.2	-75.26	2,502.6	-86.6	341.8	249.6	92.21	3.707			
7,800.0	5,661.0	7,610.0	5,574.0	49.9	49.0	-75.26	2,602.6	-86.6	341.8	246.1	95.78	3.569			
7,900.0	5,661.0	7,710.0	5,574.0	51.8	50.9	-75.26	2,702.6	-86.6	341.8	242.5	99.38	3.440			
8,000.0	5,661.0	7,810.0	5,574.0	53.6	52.7	-75.26	2,802.6	-86.6	341.8	238.9	102.98	3.320			
8,100.0	5,661.0	7,910.0	5,574.0	55.5	54.6	-75.26	2,902.6	-86.6	341.8	235.3	106.58	3.207			
8,200.0	5,661.0	8,010.0	5,574.0	57.3	56.5	-75.26	3,002.6	-86.6	341.8	231.6	110.20	3.102			
8,300.0	5,661.0	8,110.0	5,574.0	59.2	58.3	-75.26	3,102.6	-86.6	341.8	228.0	113.82	3.003			
8,400.0	5,661.0	8,210.0	5,574.0	61.0	60.2	-75.26	3,202.6	-86.6	341.8	224.4	117.45	2.910			
8,500.0	5,661.0	8,310.0	5,574.0	62.9	62.1	-75.26	3,302.6	-86.6	341.8	220.7	121.09	2.823			
8,600.0	5,661.0	8,410.0	5,574.0	64.7	63.9	-75.26	3,402.6	-86.6	341.8	217.1	124.73	2.741			
8,700.0	5,661.0	8,510.0	5,574.0	66.6	65.8	-75.26	3,502.6	-86.6	341.8	213.4	128.38	2.663			
8,800.0	5,661.0	8,610.0	5,574.0	68.5	67.7	-75.26	3,602.6	-86.5	341.8	209.8	132.03	2.589			
8,900.0	5,661.0	8,710.0	5,574.0	70.4	69.6	-75.26	3,702.6	-86.5	341.8	206.1	135.68	2.519			
9,000.0	5,661.0	8,810.0	5,574.0	72.2	71.5	-75.26	3,802.6	-86.5	341.8	202.5	139.34	2.453			
9,100.0	5,661.0	8,910.0	5,574.0	74.1	73.4	-75.26	3,902.6	-86.5	341.8	198.8	143.00	2.390			

CC - Min centre to center distance or convergent point, SF - min separation factor, ES - min ellipse separation

<b>Company:</b>	Whiting Petroleum Corporation	<b>Local Co-ordinate Reference:</b>	Well Razor #261-2316B
<b>Project:</b>	Weld County, CO	<b>TVD Reference:</b>	KB=16.5' @ 4728.2ft (Original Well Elev)
<b>Reference Site:</b>	S26-T10N-R58W	<b>MD Reference:</b>	KB=16.5' @ 4728.2ft (Original Well Elev)
<b>Site Error:</b>	0.0ft	<b>North Reference:</b>	Grid
<b>Reference Well:</b>	Razor #261-2316B	<b>Survey Calculation Method:</b>	Minimum Curvature
<b>Well Error:</b>	0.0ft	<b>Output errors are at</b>	2.00 sigma
<b>Reference Wellbore</b>	HZ	<b>Database:</b>	USA EDM 5000 Multi Users DB
<b>Reference Design:</b>	Plan #2	<b>Offset TVD Reference:</b>	Offset Datum

Offset Design		S26-T10N-R58W - Razor #261-2315A - HZ - Plan #2										Offset Site Error: 0.0 ft	
Survey Program: 0-ISCSWA MWD												Offset Well Error: 0.0 ft	
Reference		Offset		Semi Major Axis			Distance					Warning	
Measured Depth (ft)	Vertical Depth (ft)	Measured Depth (ft)	Vertical Depth (ft)	Reference (ft)	Offset (ft)	Highside Toolface (°)	Offset Wellbore Centre +N/-S (ft)	+E/-W (ft)	Between Centres (ft)	Between Ellipses (ft)	Total Uncertainty Axis	Separation Factor	
9,200.0	5,661.0	9,010.0	5,574.0	76.0	75.2	-75.26	4,002.6	-86.5	341.8	195.1	146.66	2.331	
9,300.0	5,661.0	9,110.0	5,574.0	77.9	77.1	-75.26	4,102.6	-86.5	341.8	191.5	150.33	2.274	
9,400.0	5,661.0	9,210.0	5,574.0	79.7	79.0	-75.26	4,202.6	-86.5	341.8	187.8	154.00	2.219	
9,500.0	5,661.0	9,310.0	5,574.0	81.6	80.9	-75.26	4,302.6	-86.5	341.8	184.1	157.68	2.168	
9,600.0	5,661.0	9,410.0	5,574.0	83.5	82.8	-75.26	4,402.6	-86.5	341.8	180.5	161.35	2.118	
9,700.0	5,661.0	9,510.0	5,574.0	85.4	84.7	-75.26	4,502.6	-86.5	341.8	176.8	165.03	2.071	
9,800.0	5,661.0	9,610.0	5,574.0	87.3	86.6	-75.26	4,602.6	-86.5	341.8	173.1	168.71	2.026	
9,900.0	5,661.0	9,710.0	5,574.0	89.2	88.5	-75.26	4,702.6	-86.5	341.8	169.4	172.39	1.983	
10,000.0	5,661.0	9,810.0	5,574.0	91.1	90.4	-75.26	4,802.6	-86.5	341.8	165.7	176.07	1.941	
10,100.0	5,661.0	9,910.0	5,574.0	93.0	92.3	-75.26	4,902.6	-86.4	341.8	162.0	179.76	1.901	
10,200.0	5,661.0	10,010.0	5,574.0	94.9	94.2	-75.26	5,002.6	-86.4	341.8	158.3	183.45	1.863	
10,300.0	5,661.0	10,110.0	5,574.0	96.8	96.1	-75.25	5,102.6	-86.4	341.8	154.6	187.13	1.826	
10,400.0	5,661.0	10,210.0	5,574.0	98.7	98.0	-75.25	5,202.6	-86.4	341.8	151.0	190.82	1.791	
10,500.0	5,661.0	10,310.0	5,574.0	100.5	99.9	-75.25	5,302.6	-86.4	341.8	147.3	194.52	1.757	
10,600.0	5,661.0	10,410.0	5,574.0	102.4	101.8	-75.25	5,402.6	-86.4	341.8	143.6	198.21	1.724	
10,700.0	5,661.0	10,510.0	5,574.0	104.3	103.7	-75.25	5,502.6	-86.4	341.8	139.9	201.90	1.693	
10,800.0	5,661.0	10,610.0	5,574.0	106.2	105.6	-75.25	5,602.6	-86.4	341.8	136.2	205.60	1.662	
10,900.0	5,661.0	10,710.0	5,574.0	108.1	107.5	-75.25	5,702.6	-86.4	341.8	132.5	209.29	1.633	
11,000.0	5,661.0	10,810.0	5,574.0	110.0	109.4	-75.25	5,802.6	-86.4	341.8	128.8	212.99	1.605	
11,100.0	5,661.0	10,910.0	5,574.0	111.9	111.3	-75.25	5,902.6	-86.4	341.8	125.1	216.69	1.577	
11,200.0	5,661.0	11,010.0	5,574.0	113.8	113.2	-75.25	6,002.6	-86.4	341.8	121.4	220.39	1.551	
11,300.0	5,661.0	11,110.0	5,574.0	115.7	115.1	-75.25	6,102.6	-86.4	341.8	117.7	224.09	1.525	
11,400.0	5,661.0	11,210.0	5,574.0	117.6	117.0	-75.25	6,202.6	-86.3	341.8	114.0	227.79	1.500	
11,500.0	5,661.0	11,310.0	5,574.0	119.5	118.9	-75.25	6,302.6	-86.3	341.8	110.3	231.49	1.476	Level 3
11,600.0	5,661.0	11,410.0	5,574.0	121.4	120.8	-75.25	6,402.6	-86.3	341.8	106.6	235.19	1.453	Level 3
11,700.0	5,661.0	11,510.0	5,574.0	123.3	122.7	-75.25	6,502.6	-86.3	341.8	102.9	238.89	1.431	Level 3
11,800.0	5,661.0	11,610.0	5,574.0	125.2	124.6	-75.25	6,602.6	-86.3	341.7	99.2	242.60	1.409	Level 3
11,900.0	5,661.0	11,710.0	5,574.0	127.2	126.5	-75.25	6,702.6	-86.3	341.7	95.4	246.30	1.388	Level 3
12,000.0	5,661.0	11,810.0	5,574.0	129.1	128.4	-75.25	6,802.6	-86.3	341.7	91.7	250.01	1.367	Level 3
12,100.0	5,661.0	11,910.0	5,574.0	131.0	130.3	-75.25	6,902.6	-86.3	341.7	88.0	253.71	1.347	Level 3
12,200.0	5,661.0	12,010.0	5,574.0	132.9	132.3	-75.25	7,002.6	-86.3	341.7	84.3	257.42	1.328	Level 3
12,300.0	5,661.0	12,110.0	5,574.0	134.8	134.2	-75.25	7,102.6	-86.3	341.7	80.6	261.12	1.309	Level 3
12,400.0	5,661.0	12,210.0	5,574.0	136.7	136.1	-75.25	7,202.6	-86.3	341.7	76.9	264.83	1.290	Level 3
12,500.0	5,661.0	12,310.0	5,574.0	138.6	138.0	-75.25	7,302.6	-86.3	341.7	73.2	268.54	1.273	Level 3
12,600.0	5,661.0	12,410.0	5,574.0	140.5	139.9	-75.25	7,402.6	-86.3	341.7	69.5	272.25	1.255	Level 3
12,700.0	5,661.0	12,510.0	5,574.0	142.4	141.8	-75.25	7,502.6	-86.2	341.7	65.8	275.96	1.238	Level 2
12,800.0	5,661.0	12,610.0	5,574.0	144.3	143.7	-75.25	7,602.6	-86.2	341.7	62.1	279.66	1.222	Level 2
12,900.0	5,661.0	12,710.0	5,574.0	146.2	145.6	-75.25	7,702.6	-86.2	341.7	58.3	283.37	1.206	Level 2
13,000.0	5,661.0	12,810.0	5,574.0	148.1	147.5	-75.25	7,802.6	-86.2	341.7	54.6	287.08	1.190	Level 2
13,046.0	5,661.0	12,856.0	5,574.0	148.8	148.4	-75.25	7,848.6	-86.2	341.7	53.1	288.63	1.184	Level 2
13,066.1	5,661.0	12,867.8	5,574.0	149.2	148.6	-75.25	7,860.5	-86.2	341.8	52.7	289.16	1.182	Level 2, ES, SF

<b>Company:</b>	Whiting Petroleum Corporation	<b>Local Co-ordinate Reference:</b>	Well Razor #261-2316B
<b>Project:</b>	Weld County, CO	<b>TVD Reference:</b>	KB=16.5' @ 4728.2ft (Original Well Elev)
<b>Reference Site:</b>	S26-T10N-R58W	<b>MD Reference:</b>	KB=16.5' @ 4728.2ft (Original Well Elev)
<b>Site Error:</b>	0.0ft	<b>North Reference:</b>	Grid
<b>Reference Well:</b>	Razor #261-2316B	<b>Survey Calculation Method:</b>	Minimum Curvature
<b>Well Error:</b>	0.0ft	<b>Output errors are at</b>	2.00 sigma
<b>Reference Wellbore</b>	HZ	<b>Database:</b>	USA EDM 5000 Multi Users DB
<b>Reference Design:</b>	Plan #2	<b>Offset TVD Reference:</b>	Offset Datum

Offset Design													Offset Site Error:	0.0 ft
S26-T10N-R58W - Razor #261-3513A - HZ - Plan #2													Offset Well Error:	0.0 ft
Survey Program: 0-ISCSWA MWD														
Reference				Offset			Semi Major Axis			Distance				
Measured Depth (ft)	Vertical Depth (ft)	Measured Depth (ft)	Vertical Depth (ft)	Reference (ft)	Offset (ft)	Highside Toolface (°)	Offset Wellbore Centre +N/-S (ft)	+E/-W (ft)	Between Centres (ft)	Between Ellipses (ft)	Total Uncertainty Axis	Separation Factor	Warning	
0.0	0.0	0.0	0.0	0.0	0.0	-42.19	73.7	-66.8	99.4					
100.0	100.0	100.0	100.0	0.1	0.1	-42.19	73.7	-66.8	99.4	99.2	0.19	529.695		
200.0	200.0	200.0	200.0	0.3	0.3	-42.19	73.7	-66.8	99.4	98.8	0.64	156.013		
300.0	300.0	300.0	300.0	0.5	0.5	-42.19	73.7	-66.8	99.4	98.3	1.09	91.478		
400.0	400.0	400.0	400.0	0.8	0.8	-42.19	73.7	-66.8	99.4	97.9	1.54	64.710		
500.0	500.0	500.0	500.0	1.0	1.0	-42.19	73.7	-66.8	99.4	97.4	1.99	50.062		
600.0	600.0	600.0	600.0	1.2	1.2	-42.19	73.7	-66.8	99.4	97.0	2.44	40.821		
700.0	700.0	700.0	700.0	1.4	1.4	-42.19	73.7	-66.8	99.4	96.5	2.88	34.460		
800.0	800.0	800.0	800.0	1.7	1.7	-42.19	73.7	-66.8	99.4	96.1	3.33	29.814		
900.0	900.0	900.0	900.0	1.9	1.9	-42.19	73.7	-66.8	99.4	95.6	3.78	26.272		
1,000.0	1,000.0	1,000.0	1,000.0	2.1	2.1	-42.19	73.7	-66.8	99.4	95.2	4.23	23.483		
1,100.0	1,100.0	1,102.2	1,102.1	2.3	2.3	-43.02	71.9	-67.1	98.3	93.7	4.66	21.105		
1,200.0	1,200.0	1,203.8	1,203.7	2.6	2.5	-60.34	66.5	-67.9	94.3	89.2	5.06	18.613		
1,300.0	1,299.8	1,303.1	1,302.7	2.8	2.7	-67.11	59.7	-69.1	88.4	82.9	5.48	16.134		
1,400.0	1,399.6	1,402.1	1,401.5	3.0	2.9	-75.72	52.9	-70.2	83.4	77.5	5.90	14.126		
1,500.0	1,499.4	1,501.2	1,500.3	3.2	3.1	-85.16	46.0	-71.3	80.5	74.2	6.34	12.695		
1,571.6	1,570.8	1,572.0	1,571.0	3.4	3.2	-92.20	41.2	-72.1	79.9	73.2	6.66	11.990	CC	
1,600.0	1,599.1	1,600.2	1,599.0	3.5	3.3	-95.00	39.2	-72.4	80.0	73.2	6.79	11.779	ES	
1,700.0	1,698.9	1,699.2	1,697.8	3.7	3.5	-104.68	32.4	-73.6	81.9	74.6	7.25	11.298		
1,800.0	1,798.6	1,798.2	1,796.6	4.0	3.8	-113.69	25.6	-74.7	86.0	78.3	7.70	11.167	SF	
1,900.0	1,898.4	1,897.3	1,895.4	4.2	4.0	-121.71	18.8	-75.8	92.0	83.9	8.15	11.296		
2,000.0	1,998.1	1,996.3	1,994.2	4.4	4.2	-128.64	12.0	-76.9	99.7	91.1	8.59	11.602		
2,100.0	2,097.9	2,095.3	2,093.0	4.7	4.5	-134.53	5.1	-78.0	108.5	99.5	9.03	12.021		
2,200.0	2,197.6	2,194.4	2,191.8	4.9	4.7	-139.49	-1.7	-79.2	118.4	108.9	9.47	12.507		
2,300.0	2,297.4	2,293.4	2,290.6	5.2	5.0	-143.66	-8.5	-80.3	129.0	119.1	9.90	13.026		
2,400.0	2,397.2	2,392.4	2,389.3	5.4	5.2	-147.20	-15.3	-81.4	140.2	129.9	10.34	13.557		
2,500.0	2,496.9	2,491.4	2,488.1	5.7	5.4	-150.20	-22.1	-82.5	151.8	141.1	10.78	14.086		
2,600.0	2,596.7	2,590.5	2,586.9	5.9	5.7	-152.77	-28.9	-83.7	163.8	152.6	11.22	14.604		
2,700.0	2,696.4	2,689.5	2,685.7	6.2	5.9	-154.99	-35.8	-84.8	176.1	164.4	11.66	15.106		
2,800.0	2,796.2	2,788.5	2,784.5	6.4	6.2	-156.92	-42.6	-85.9	188.6	176.5	12.10	15.589		
2,900.0	2,895.9	2,887.5	2,883.3	6.7	6.4	-158.61	-49.4	-87.0	201.3	188.7	12.54	16.051		
3,000.0	2,995.7	2,986.6	2,982.1	6.9	6.7	-160.09	-56.2	-88.1	214.1	201.1	12.98	16.493		
3,100.0	3,095.5	3,085.6	3,080.8	7.2	6.9	-161.41	-63.0	-89.3	227.1	213.7	13.43	16.913		
3,200.0	3,195.2	3,184.6	3,179.6	7.4	7.2	-162.59	-69.8	-90.4	240.1	226.3	13.87	17.314		
3,300.0	3,295.0	3,283.7	3,278.4	7.7	7.5	-163.64	-76.6	-91.5	253.3	239.0	14.32	17.694		
3,400.0	3,394.7	3,382.7	3,377.2	7.9	7.7	-164.59	-83.5	-92.6	266.5	251.8	14.76	18.056		
3,500.0	3,494.5	3,481.7	3,476.0	8.2	8.0	-165.45	-90.3	-93.8	279.8	264.6	15.21	18.401		
3,600.0	3,594.2	3,580.7	3,574.8	8.4	8.2	-166.24	-97.1	-94.9	293.2	277.5	15.65	18.728		
3,700.0	3,694.0	3,679.8	3,673.6	8.7	8.5	-166.95	-103.9	-96.0	306.6	290.5	16.10	19.040		
3,800.0	3,793.7	3,778.8	3,772.4	9.0	8.7	-167.61	-110.7	-97.1	320.0	303.5	16.55	19.337		
3,900.0	3,893.5	3,877.8	3,871.1	9.2	9.0	-168.21	-117.5	-98.2	333.5	316.5	17.00	19.620		
4,000.0	3,993.3	3,976.9	3,969.9	9.5	9.2	-168.76	-124.4	-99.4	347.0	329.6	17.45	19.890		
4,100.0	4,093.0	4,075.9	4,068.7	9.7	9.5	-169.27	-131.2	-100.5	360.6	342.7	17.90	20.147		
4,200.0	4,192.8	4,174.9	4,167.5	10.0	9.8	-169.75	-138.0	-101.6	374.2	355.8	18.35	20.393		
4,300.0	4,292.5	4,273.9	4,266.3	10.2	10.0	-170.19	-144.8	-102.7	387.8	369.0	18.80	20.628		
4,400.0	4,392.3	4,373.0	4,365.1	10.5	10.3	-170.61	-151.6	-103.9	401.4	382.1	19.25	20.853		
4,500.0	4,492.0	4,472.0	4,463.9	10.7	10.5	-170.99	-158.4	-105.0	415.0	395.3	19.70	21.069		
4,600.0	4,591.8	4,571.0	4,562.7	11.0	10.8	-171.35	-165.3	-106.1	428.7	408.5	20.15	21.275		
4,700.0	4,691.6	4,670.1	4,661.4	11.2	11.1	-171.69	-172.1	-107.2	442.3	421.7	20.60	21.472		
4,800.0	4,791.3	4,769.1	4,760.2	11.5	11.3	-172.01	-178.9	-108.3	456.0	435.0	21.05	21.662		
4,900.0	4,891.1	4,868.1	4,859.0	11.8	11.6	-172.31	-185.7	-109.5	469.7	448.2	21.50	21.844		
5,000.0	4,990.8	4,967.1	4,957.8	12.0	11.8	-172.59	-192.5	-110.6	483.4	461.5	21.96	22.019		

CC - Min centre to center distance or convergent point, SF - min separation factor, ES - min ellipse separation

<b>Company:</b>	Whiting Petroleum Corporation	<b>Local Co-ordinate Reference:</b>	Well Razor #26I-2316B
<b>Project:</b>	Weld County, CO	<b>TVD Reference:</b>	KB=16.5' @ 4728.2ft (Original Well Elev)
<b>Reference Site:</b>	S26-T10N-R58W	<b>MD Reference:</b>	KB=16.5' @ 4728.2ft (Original Well Elev)
<b>Site Error:</b>	0.0ft	<b>North Reference:</b>	Grid
<b>Reference Well:</b>	Razor #26I-2316B	<b>Survey Calculation Method:</b>	Minimum Curvature
<b>Well Error:</b>	0.0ft	<b>Output errors are at</b>	2.00 sigma
<b>Reference Wellbore</b>	HZ	<b>Database:</b>	USA EDM 5000 Multi Users DB
<b>Reference Design:</b>	Plan #2	<b>Offset TVD Reference:</b>	Offset Datum

<b>Offset Design</b>	S26-T10N-R58W - Razor	#26I-3513A - HZ - Plan #2	<b>Offset Site Error:</b>	0.0 ft									
<b>Survey Program:</b>	0-ISCWSA MWD			<b>Offset Well Error:</b>	0.0 ft								
<b>Reference</b>	<b>Offset</b>	<b>Semi Major Axis</b>	<b>Distance</b>		<b>Warning</b>								
<b>Measured Depth (ft)</b>	<b>Vertical Depth (ft)</b>	<b>Measured Depth (ft)</b>	<b>Vertical Depth (ft)</b>	<b>Reference (ft)</b>	<b>Offset (ft)</b>	<b>Highside Toolface (°)</b>	<b>Offset Wellbore Centre +N/-S (ft)</b>	<b>+E/-W (ft)</b>	<b>Between Centres (ft)</b>	<b>Between Ellipses (ft)</b>	<b>Total Uncertainty Axis</b>	<b>Separation Factor</b>	
5,100.0	5,090.6	5,066.2	5,056.6	12.3	12.1	-172.86	-199.3	-111.7	497.2	474.8	22.41	22.187	

<b>Company:</b>	Whiting Petroleum Corporation	<b>Local Co-ordinate Reference:</b>	Well Razor #26I-2316B
<b>Project:</b>	Weld County, CO	<b>TVD Reference:</b>	KB=16.5' @ 4728.2ft (Original Well Elev)
<b>Reference Site:</b>	S26-T10N-R58W	<b>MD Reference:</b>	KB=16.5' @ 4728.2ft (Original Well Elev)
<b>Site Error:</b>	0.0ft	<b>North Reference:</b>	Grid
<b>Reference Well:</b>	Razor #26I-2316B	<b>Survey Calculation Method:</b>	Minimum Curvature
<b>Well Error:</b>	0.0ft	<b>Output errors are at</b>	2.00 sigma
<b>Reference Wellbore</b>	HZ	<b>Database:</b>	USA EDM 5000 Multi Users DB
<b>Reference Design:</b>	Plan #2	<b>Offset TVD Reference:</b>	Offset Datum

Offset Design													Offset Site Error:	0.0 ft
S26-T10N-R58W - Razor #26I-3514B - HZ - Plan #2													Offset Well Error:	0.0 ft
Survey Program: 0-ISCSWA MWD														
Reference		Offset		Semi Major Axis			Distance			Total	Separation	Warning		
Measured Depth (ft)	Vertical Depth (ft)	Measured Depth (ft)	Vertical Depth (ft)	Reference (ft)	Offset (ft)	Highside Toolface (°)	Offset Wellbore Centre +N/-S (ft)	+E/-W (ft)	Between Centres (ft)	Between Ellipses (ft)	Uncertainty Axis	Factor		
0.0	0.0	0.0	0.0	0.0	0.0	-91.06	-0.6	-33.1	33.1					
100.0	100.0	100.0	100.0	0.1	0.1	-91.06	-0.6	-33.1	33.1	32.9	0.19	176.184		
200.0	200.0	200.0	200.0	0.3	0.3	-91.06	-0.6	-33.1	33.1	32.4	0.64	51.892		
300.0	300.0	300.0	300.0	0.5	0.5	-91.06	-0.6	-33.1	33.1	32.0	1.09	30.427		
400.0	400.0	400.0	400.0	0.8	0.8	-91.06	-0.6	-33.1	33.1	31.5	1.54	21.524		
500.0	500.0	500.0	500.0	1.0	1.0	-91.06	-0.6	-33.1	33.1	31.1	1.99	16.651		
600.0	600.0	600.0	600.0	1.2	1.2	-91.06	-0.6	-33.1	33.1	30.6	2.44	13.578		
700.0	700.0	700.1	700.1	1.4	1.4	-94.09	-2.3	-32.8	32.9	30.0	2.86	11.512		
754.7	754.7	754.7	754.7	1.6	1.5	-98.32	-4.7	-32.5	32.8	29.7	3.08	10.649 CC		
800.0	800.0	800.0	799.8	1.7	1.6	-103.20	-7.5	-32.1	32.9	29.7	3.27	10.081 ES		
900.0	900.0	899.7	899.3	1.9	1.8	-114.89	-14.4	-31.0	34.2	30.5	3.69	9.271		
1,000.0	1,000.0	999.5	998.8	2.1	2.0	-125.32	-21.3	-30.0	36.8	32.7	4.13	8.929		
1,100.0	1,100.0	1,099.2	1,098.3	2.3	2.2	-134.14	-28.2	-29.0	40.5	35.9	4.56	8.878 SF		
1,200.0	1,200.0	1,198.9	1,197.7	2.6	2.5	-155.94	-35.0	-28.0	46.5	41.5	5.01	9.282		
1,300.0	1,299.8	1,298.1	1,296.8	2.8	2.7	-163.12	-41.9	-27.0	56.6	51.1	5.45	10.391		
1,400.0	1,399.6	1,397.2	1,395.6	3.0	3.0	-168.44	-48.7	-26.0	69.0	63.1	5.88	11.727		
1,500.0	1,499.4	1,496.3	1,494.4	3.2	3.2	-172.12	-55.6	-25.0	81.8	75.4	6.32	12.938		
1,600.0	1,599.1	1,595.3	1,593.2	3.5	3.5	-174.80	-62.4	-24.0	94.8	88.0	6.76	14.022		
1,700.0	1,698.9	1,694.4	1,692.0	3.7	3.7	-176.82	-69.3	-23.0	108.0	100.8	7.20	14.991		
1,800.0	1,798.6	1,793.4	1,790.9	4.0	4.0	-178.41	-76.1	-22.0	121.3	113.6	7.65	15.858		
1,900.0	1,898.4	1,892.5	1,889.7	4.2	4.2	-179.68	-82.9	-21.0	134.7	126.6	8.10	16.635		
2,000.0	1,998.1	1,991.6	1,988.5	4.4	4.5	179.28	-89.8	-20.0	148.1	139.5	8.54	17.335		
2,100.0	2,097.9	2,090.6	2,087.3	4.7	4.7	178.41	-96.6	-19.0	161.5	152.6	8.99	17.967		
2,200.0	2,197.6	2,189.7	2,186.1	4.9	5.0	177.67	-103.4	-18.0	175.0	165.6	9.44	18.541		
2,300.0	2,297.4	2,288.8	2,285.0	5.2	5.2	177.04	-110.3	-17.0	188.6	178.7	9.89	19.064		
2,400.0	2,397.2	2,387.8	2,383.8	5.4	5.5	176.50	-117.1	-16.0	202.1	191.8	10.34	19.541		
2,500.0	2,496.9	2,486.9	2,482.6	5.7	5.7	176.02	-124.0	-15.0	215.6	204.9	10.79	19.979		
2,600.0	2,596.7	2,585.9	2,581.4	5.9	6.0	175.60	-130.8	-14.0	229.2	218.0	11.25	20.382		
2,700.0	2,696.4	2,685.0	2,680.3	6.2	6.3	175.23	-137.6	-13.0	242.8	231.1	11.70	20.754		
2,800.0	2,796.2	2,784.1	2,779.1	6.4	6.5	174.89	-144.5	-12.0	256.4	244.2	12.15	21.098		
2,900.0	2,895.9	2,883.1	2,877.9	6.7	6.8	174.59	-151.3	-11.0	270.0	257.4	12.61	21.417		
3,000.0	2,995.7	2,982.2	2,976.7	6.9	7.0	174.32	-158.1	-10.0	283.6	270.5	13.06	21.714		
3,100.0	3,095.5	3,081.3	3,075.5	7.2	7.3	174.08	-165.0	-9.0	297.2	283.7	13.51	21.992		
3,200.0	3,195.2	3,180.3	3,174.4	7.4	7.6	173.85	-171.8	-8.0	310.8	296.8	13.97	22.251		
3,300.0	3,295.0	3,279.4	3,273.2	7.7	7.8	173.64	-178.7	-7.0	324.4	310.0	14.42	22.493		
3,400.0	3,394.7	3,378.4	3,372.0	7.9	8.1	173.45	-185.5	-6.0	338.0	323.1	14.88	22.721		
3,500.0	3,494.5	3,477.5	3,470.8	8.2	8.3	173.28	-192.3	-5.0	351.6	336.3	15.33	22.935		
3,600.0	3,594.2	3,576.6	3,569.6	8.4	8.6	173.12	-199.2	-4.0	365.3	349.5	15.79	23.136		
3,700.0	3,694.0	3,675.6	3,668.5	8.7	8.9	172.97	-206.0	-3.0	378.9	362.6	16.24	23.327		
3,800.0	3,793.7	3,774.7	3,767.3	9.0	9.1	172.83	-212.8	-2.0	392.5	375.8	16.70	23.506		
3,900.0	3,893.5	3,873.8	3,866.1	9.2	9.4	172.70	-219.7	-1.0	406.2	389.0	17.15	23.676		
4,000.0	3,993.3	3,972.8	3,964.9	9.5	9.6	172.58	-226.5	0.0	419.8	402.2	17.61	23.838		
4,100.0	4,093.0	4,071.9	4,063.8	9.7	9.9	172.46	-233.4	1.0	433.4	415.4	18.07	23.991		
4,200.0	4,192.8	4,170.9	4,162.6	10.0	10.2	172.35	-240.2	2.0	447.1	428.5	18.52	24.136		
4,300.0	4,292.5	4,270.0	4,261.4	10.2	10.4	172.25	-247.0	3.0	460.7	441.7	18.98	24.275		
4,400.0	4,392.3	4,369.1	4,360.2	10.5	10.7	172.16	-253.9	4.0	474.3	454.9	19.43	24.406		
4,500.0	4,492.0	4,468.1	4,459.0	10.7	10.9	172.07	-260.7	5.0	488.0	468.1	19.89	24.532		

<b>Company:</b>	Whiting Petroleum Corporation	<b>Local Co-ordinate Reference:</b>	Well Razor #261-2316B
<b>Project:</b>	Weld County, CO	<b>TVD Reference:</b>	KB=16.5' @ 4728.2ft (Original Well Elev)
<b>Reference Site:</b>	S26-T10N-R58W	<b>MD Reference:</b>	KB=16.5' @ 4728.2ft (Original Well Elev)
<b>Site Error:</b>	0.0ft	<b>North Reference:</b>	Grid
<b>Reference Well:</b>	Razor #261-2316B	<b>Survey Calculation Method:</b>	Minimum Curvature
<b>Well Error:</b>	0.0ft	<b>Output errors are at</b>	2.00 sigma
<b>Reference Wellbore</b>	HZ	<b>Database:</b>	USA EDM 5000 Multi Users DB
<b>Reference Design:</b>	Plan #2	<b>Offset TVD Reference:</b>	Offset Datum

Offset Design													Offset Site Error:	0.0 ft	
Survey Program: 0-ISCSWA MWD													Offset Well Error:		0.0 ft
Reference													Warning		
Offset				Semi Major Axis			Distance								
Measured Depth (ft)	Vertical Depth (ft)	Measured Depth (ft)	Vertical Depth (ft)	Reference (ft)	Offset (ft)	Highside Toolface (°)	Offset Wellbore Centre +N/-S (ft)	+E/-W (ft)	Between Centres (ft)	Between Ellipses (ft)	Total Uncertainty Axis	Separation Factor			
0.0	0.0	0.0	0.0	0.0	0.0	-1.08	74.9	-1.4	74.9						
100.0	100.0	100.0	100.0	0.1	0.1	-1.08	74.9	-1.4	74.9	74.7	0.19	398.999			
200.0	200.0	200.0	200.0	0.3	0.3	-1.08	74.9	-1.4	74.9	74.2	0.64	117.518			
300.0	300.0	300.0	300.0	0.5	0.5	-1.08	74.9	-1.4	74.9	73.8	1.09	68.907			
400.0	400.0	400.0	400.0	0.8	0.8	-1.08	74.9	-1.4	74.9	73.3	1.54	48.744			
500.0	500.0	500.0	500.0	1.0	1.0	-1.08	74.9	-1.4	74.9	72.9	1.99	37.710			
600.0	600.0	600.0	600.0	1.2	1.2	-1.08	74.9	-1.4	74.9	72.4	2.44	30.749			
700.0	700.0	702.5	702.4	1.4	1.4	-0.58	73.2	-0.7	73.2	70.3	2.86	25.559			
800.0	800.0	804.6	804.4	1.7	1.6	1.07	68.1	1.3	68.2	65.0	3.28	20.788			
900.0	900.0	904.3	903.9	1.9	1.8	3.56	61.6	3.8	61.9	58.2	3.71	16.696			
1,000.0	1,000.0	1,004.1	1,003.4	2.1	2.0	6.62	55.1	6.4	55.6	51.5	4.13	13.459			
1,100.0	1,100.0	1,103.8	1,102.9	2.3	2.3	10.44	48.7	9.0	49.6	45.0	4.57	10.853			
1,200.0	1,200.0	1,203.5	1,202.3	2.6	2.5	1.61	42.2	11.5	42.1	37.1	5.03	8.366			
1,300.0	1,299.8	1,302.8	1,301.4	2.8	2.7	9.52	35.8	14.1	31.6	26.1	5.49	5.753			
1,400.0	1,399.6	1,401.9	1,400.3	3.0	3.0	26.52	29.4	16.6	20.7	14.7	5.98	3.456			
1,500.0	1,499.4	1,501.0	1,499.2	3.2	3.2	65.94	22.9	19.2	14.4	8.0	6.47	2.231			
1,512.1	1,511.5	1,513.1	1,511.2	3.3	3.3	72.29	22.1	19.5	14.4	7.8	6.52	2.200 CC, ES, SF			
1,600.0	1,599.1	1,600.1	1,598.0	3.5	3.5	111.11	16.5	21.7	18.5	11.7	6.82	2.710			
1,700.0	1,698.9	1,699.3	1,696.9	3.7	3.7	132.12	10.1	24.3	28.8	21.5	7.22	3.984			
1,800.0	1,798.6	1,798.4	1,795.8	4.0	4.0	141.51	3.6	26.8	40.8	33.1	7.65	5.331			
1,900.0	1,898.4	1,897.5	1,894.7	4.2	4.2	146.56	-2.8	29.4	53.4	45.3	8.10	6.596			
2,000.0	1,998.1	1,996.6	1,993.5	4.4	4.5	149.67	-9.2	31.9	66.3	57.7	8.55	7.755			
2,100.0	2,097.9	2,095.7	2,092.4	4.7	4.7	151.76	-15.6	34.5	79.3	70.3	9.00	8.810			
2,200.0	2,197.6	2,194.8	2,191.3	4.9	5.0	153.27	-22.1	37.0	92.4	82.9	9.45	9.770			
2,300.0	2,297.4	2,294.0	2,290.2	5.2	5.3	154.40	-28.5	39.6	105.5	95.6	9.91	10.646			
2,400.0	2,397.2	2,393.1	2,389.0	5.4	5.5	155.27	-34.9	42.1	118.6	108.3	10.36	11.448			
2,500.0	2,496.9	2,492.2	2,487.9	5.7	5.8	155.98	-41.4	44.6	131.8	121.0	10.82	12.183			
2,600.0	2,596.7	2,591.3	2,586.8	5.9	6.0	156.55	-47.8	47.2	145.0	133.7	11.27	12.860			
2,700.0	2,696.4	2,690.4	2,685.7	6.2	6.3	157.03	-54.2	49.7	158.2	146.5	11.73	13.485			
2,800.0	2,796.2	2,789.5	2,784.5	6.4	6.5	157.44	-60.6	52.3	171.4	159.2	12.19	14.063			
2,900.0	2,895.9	2,888.7	2,883.4	6.7	6.8	157.79	-67.1	54.8	184.6	172.0	12.65	14.600			
3,000.0	2,995.7	2,987.8	2,982.3	6.9	7.1	158.09	-73.5	57.4	197.9	184.8	13.10	15.099			
3,100.0	3,095.5	3,086.9	3,081.2	7.2	7.3	158.35	-79.9	59.9	211.1	197.5	13.56	15.564			
3,200.0	3,195.2	3,186.0	3,180.0	7.4	7.6	158.58	-86.3	62.5	224.3	210.3	14.02	15.999			
3,300.0	3,295.0	3,285.1	3,278.9	7.7	7.8	158.79	-92.8	65.0	237.6	223.1	14.48	16.407			
3,400.0	3,394.7	3,384.2	3,377.8	7.9	8.1	158.97	-99.2	67.6	250.8	235.9	14.94	16.789			
3,500.0	3,494.5	3,483.4	3,476.7	8.2	8.4	159.14	-105.6	70.1	264.0	248.6	15.40	17.149			
3,600.0	3,594.2	3,582.5	3,575.5	8.4	8.6	159.29	-112.1	72.7	277.3	261.4	15.86	17.488			
3,700.0	3,694.0	3,681.6	3,674.4	8.7	8.9	159.43	-118.5	75.2	290.5	274.2	16.32	17.807			
3,800.0	3,793.7	3,780.7	3,773.3	9.0	9.1	159.55	-124.9	77.8	303.8	287.0	16.78	18.109			
3,900.0	3,893.5	3,879.8	3,872.2	9.2	9.4	159.67	-131.3	80.3	317.0	299.8	17.23	18.395			
4,000.0	3,993.3	3,978.9	3,971.0	9.5	9.7	159.77	-137.8	82.9	330.3	312.6	17.69	18.666			
4,100.0	4,093.0	4,078.1	4,069.9	9.7	9.9	159.87	-144.2	85.4	343.5	325.4	18.15	18.923			
4,200.0	4,192.8	4,177.2	4,168.8	10.0	10.2	159.96	-150.6	88.0	356.8	338.2	18.61	19.168			
4,300.0	4,292.5	4,276.3	4,267.7	10.2	10.4	160.04	-157.1	90.5	370.0	351.0	19.07	19.400			
4,400.0	4,392.3	4,375.4	4,366.5	10.5	10.7	160.12	-163.5	93.1	383.3	363.8	19.53	19.622			
4,500.0	4,492.0	4,474.5	4,465.4	10.7	11.0	160.19	-169.9	95.6	396.5	376.6	19.99	19.833			
4,600.0	4,591.8	4,573.6	4,564.3	11.0	11.2	160.26	-176.3	98.1	409.8	389.3	20.45	20.035			
4,700.0	4,691.6	4,672.8	4,663.2	11.2	11.5	160.32	-182.8	100.7	423.1	402.1	20.91	20.228			
4,800.0	4,791.3	4,771.9	4,762.0	11.5	11.8	160.38	-189.2	103.2	436.3	414.9	21.38	20.412			
4,900.0	4,891.1	4,871.0	4,860.9	11.8	12.0	160.44	-195.6	105.8	449.6	427.7	21.84	20.589			
5,000.0	4,990.8	4,970.1	4,959.8	12.0	12.3	160.49	-202.0	108.3	462.8	440.5	22.30	20.758			

CC - Min centre to center distance or convergent point, SF - min separation factor, ES - min ellipse separation

<b>Company:</b>	Whiting Petroleum Corporation	<b>Local Co-ordinate Reference:</b>	Well Razor #26I-2316B
<b>Project:</b>	Weld County, CO	<b>TVD Reference:</b>	KB=16.5' @ 4728.2ft (Original Well Elev)
<b>Reference Site:</b>	S26-T10N-R58W	<b>MD Reference:</b>	KB=16.5' @ 4728.2ft (Original Well Elev)
<b>Site Error:</b>	0.0ft	<b>North Reference:</b>	Grid
<b>Reference Well:</b>	Razor #26I-2316B	<b>Survey Calculation Method:</b>	Minimum Curvature
<b>Well Error:</b>	0.0ft	<b>Output errors are at</b>	2.00 sigma
<b>Reference Wellbore</b>	HZ	<b>Database:</b>	USA EDM 5000 Multi Users DB
<b>Reference Design:</b>	Plan #2	<b>Offset TVD Reference:</b>	Offset Datum

<b>Offset Design</b>	S26-T10N-R58W - Razor	#26I-3515A - HZ - Plan #3	<b>Offset Site Error:</b>	0.0 ft
<b>Survey Program:</b>	0-ISCSWA MWD		<b>Offset Well Error:</b>	0.0 ft
<b>Reference</b>	<b>Offset</b>	<b>Semi Major Axis</b>	<b>Distance</b>	<b>Warning</b>
<b>Measured Depth (ft)</b>	<b>Vertical Depth (ft)</b>	<b>Measured Depth (ft)</b>	<b>Vertical Depth (ft)</b>	<b>Reference</b>
				<b>Offset (ft)</b>
				<b>Highside Toolface (°)</b>
				<b>Offset Wellbore Centre +N/-S (ft)</b>
				<b>+E/-W (ft)</b>
				<b>Between Centres (ft)</b>
				<b>Between Ellipses (ft)</b>
				<b>Total Uncertainty Axis</b>
				<b>Separation Factor</b>
5,100.0	5,090.6	5,069.2	5,058.7	12.3
5,186.1	5,176.5	5,128.7	5,118.0	12.5
5,200.0	5,190.3	5,135.9	5,125.0	12.5
				12.5
				12.7
				160.54
				160.54
				160.43
				-208.5
				110.9
				476.1
				453.3
				22.76
				20.921
				23.10
				21.168
				23.10
				21.285

<b>Company:</b>	Whiting Petroleum Corporation	<b>Local Co-ordinate Reference:</b>	Well Razor #26I-2316B
<b>Project:</b>	Weld County, CO	<b>TVD Reference:</b>	KB=16.5' @ 4728.2ft (Original Well Elev)
<b>Reference Site:</b>	S26-T10N-R58W	<b>MD Reference:</b>	KB=16.5' @ 4728.2ft (Original Well Elev)
<b>Site Error:</b>	0.0ft	<b>North Reference:</b>	Grid
<b>Reference Well:</b>	Razor #26I-2316B	<b>Survey Calculation Method:</b>	Minimum Curvature
<b>Well Error:</b>	0.0ft	<b>Output errors are at</b>	2.00 sigma
<b>Reference Wellbore</b>	HZ	<b>Database:</b>	USA EDM 5000 Multi Users DB
<b>Reference Design:</b>	Plan #2	<b>Offset TVD Reference:</b>	Offset Datum

Offset Design													Offset Site Error:	0.0 ft
S26-T10N-R58W - Razor #26I-3516B - HZ - Plan #3													Offset Well Error:	0.0 ft
Survey Program: 0-ISCSWA MWD														
Reference				Offset		Semi Major Axis			Distance					
Measured Depth (ft)	Vertical Depth (ft)	Measured Depth (ft)	Vertical Depth (ft)	Reference (ft)	Offset (ft)	Highside Toolface (°)	Offset Wellbore Centre +N/-S (ft)	+E/-W (ft)	Between Centres (ft)	Between Ellipses (ft)	Total Uncertainty Axis	Separation Factor	Warning	
0.0	0.0	0.0	0.0	0.0	0.0	88.90	0.6	33.1	33.1					
100.0	100.0	100.0	100.0	0.1	0.1	88.90	0.6	33.1	33.1	32.9	0.19	176.184		
200.0	200.0	200.0	200.0	0.3	0.3	88.90	0.6	33.1	33.1	32.4	0.64	51.892		
300.0	300.0	300.0	300.0	0.5	0.5	88.90	0.6	33.1	33.1	32.0	1.09	30.427		
400.0	400.0	400.0	400.0	0.8	0.8	88.90	0.6	33.1	33.1	31.5	1.54	21.524		
500.0	500.0	500.0	500.0	1.0	1.0	88.90	0.6	33.1	33.1	31.1	1.99	16.651		
600.0	600.0	600.0	600.0	1.2	1.2	88.90	0.6	33.1	33.1	30.6	2.44	13.578		
700.0	700.0	700.0	700.0	1.4	1.4	88.90	0.6	33.1	33.1	30.2	2.88	11.462		
800.0	800.0	800.0	800.0	1.7	1.7	88.90	0.6	33.1	33.1	29.7	3.33	9.917		
900.0	900.0	900.0	900.0	1.9	1.9	88.90	0.6	33.1	33.1	29.3	3.78	8.739		
1,000.0	1,000.0	1,000.0	1,000.0	2.1	2.1	88.90	0.6	33.1	33.1	28.8	4.23	7.811		
1,100.0	1,100.0	1,100.0	1,100.0	2.3	2.3	88.90	0.6	33.1	33.1	28.4	4.68	7.061 CC, ES		
1,200.0	1,200.0	1,199.3	1,199.3	2.6	2.5	80.56	-0.8	33.9	33.6	28.5	5.10	6.592 SF		
1,300.0	1,299.8	1,298.0	1,297.9	2.8	2.7	95.02	-5.2	36.6	37.0	31.5	5.50	6.720		
1,400.0	1,399.6	1,397.2	1,396.8	3.0	2.9	109.84	-11.2	40.1	44.4	38.5	5.92	7.509		
1,500.0	1,499.4	1,496.4	1,495.7	3.2	3.1	119.98	-17.1	43.7	54.0	47.6	6.34	8.516		
1,600.0	1,599.1	1,595.5	1,594.6	3.5	3.3	126.94	-23.0	47.3	64.7	57.9	6.76	9.565		
1,700.0	1,698.9	1,694.7	1,693.6	3.7	3.5	131.88	-28.9	50.8	76.1	68.9	7.19	10.577		
1,800.0	1,798.6	1,793.9	1,792.5	4.0	3.8	135.52	-34.9	54.4	87.9	80.2	7.62	11.524		
1,900.0	1,898.4	1,893.0	1,891.4	4.2	4.0	138.29	-40.8	58.0	99.9	91.9	8.06	12.398		
2,000.0	1,998.1	1,992.2	1,990.3	4.4	4.2	140.47	-46.7	61.5	112.2	103.7	8.50	13.198		
2,100.0	2,097.9	2,091.4	2,089.3	4.7	4.5	142.21	-52.7	65.1	124.5	115.6	8.94	13.931		
2,200.0	2,197.6	2,190.5	2,188.2	4.9	4.7	143.64	-58.6	68.6	137.0	127.6	9.38	14.601		
2,300.0	2,297.4	2,289.7	2,287.1	5.2	4.9	144.82	-64.5	72.2	149.5	139.7	9.83	15.215		
2,400.0	2,397.2	2,388.9	2,386.0	5.4	5.2	145.83	-70.5	75.8	162.1	151.8	10.28	15.778		
2,500.0	2,496.9	2,488.0	2,485.0	5.7	5.4	146.69	-76.4	79.3	174.7	164.0	10.72	16.296		
2,600.0	2,596.7	2,587.2	2,583.9	5.9	5.7	147.43	-82.3	82.9	187.4	176.2	11.17	16.773		
2,700.0	2,696.4	2,686.4	2,682.8	6.2	5.9	148.08	-88.2	86.5	200.1	188.5	11.62	17.214		
2,800.0	2,796.2	2,785.5	2,781.8	6.4	6.2	148.65	-94.2	90.0	212.8	200.7	12.08	17.622		
2,900.0	2,895.9	2,884.7	2,880.7	6.7	6.4	149.16	-100.1	93.6	225.5	213.0	12.53	18.001		
3,000.0	2,995.7	2,983.9	2,979.6	6.9	6.7	149.62	-106.0	97.2	238.3	225.3	12.98	18.353		
3,100.0	3,095.5	3,083.0	3,078.5	7.2	6.9	150.02	-112.0	100.7	251.0	237.6	13.44	18.682		
3,200.0	3,195.2	3,182.2	3,177.5	7.4	7.2	150.39	-117.9	104.3	263.8	249.9	13.89	18.988		
3,300.0	3,295.0	3,281.4	3,276.4	7.7	7.4	150.73	-123.8	107.8	276.6	262.2	14.35	19.276		
3,400.0	3,394.7	3,380.5	3,375.3	7.9	7.7	151.03	-129.7	111.4	289.4	274.6	14.81	19.545		
3,500.0	3,494.5	3,479.7	3,474.2	8.2	7.9	151.31	-135.7	115.0	302.2	286.9	15.26	19.798		
3,600.0	3,594.2	3,578.9	3,573.2	8.4	8.2	151.56	-141.6	118.5	315.0	299.3	15.72	20.036		
3,700.0	3,694.0	3,678.0	3,672.1	8.7	8.4	151.80	-147.5	122.1	327.8	311.6	16.18	20.261		
3,800.0	3,793.7	3,777.2	3,771.0	9.0	8.7	152.02	-153.5	125.7	340.6	324.0	16.64	20.473		
3,900.0	3,893.5	3,876.4	3,869.9	9.2	8.9	152.22	-159.4	129.2	353.4	336.3	17.10	20.673		
4,000.0	3,993.3	3,975.5	3,968.9	9.5	9.2	152.41	-165.3	132.8	366.2	348.7	17.55	20.863		
4,100.0	4,093.0	4,074.7	4,067.8	9.7	9.5	152.59	-171.3	136.3	379.1	361.1	18.01	21.043		
4,200.0	4,192.8	4,173.9	4,166.7	10.0	9.7	152.75	-177.2	139.9	391.9	373.4	18.47	21.213		
4,300.0	4,292.5	4,273.0	4,265.6	10.2	10.0	152.90	-183.1	143.5	404.7	385.8	18.93	21.376		
4,400.0	4,392.3	4,372.2	4,364.6	10.5	10.2	153.05	-189.0	147.0	417.6	398.2	19.39	21.530		
4,500.0	4,492.0	4,471.4	4,463.5	10.7	10.5	153.18	-195.0	150.6	430.4	410.5	19.85	21.678		
4,600.0	4,591.8	4,570.6	4,562.4	11.0	10.7	153.31	-200.9	154.2	443.2	422.9	20.32	21.818		
4,700.0	4,691.6	4,669.7	4,661.3	11.2	11.0	153.43	-206.8	157.7	456.1	435.3	20.78	21.952		
4,800.0	4,791.3	4,768.9	4,760.3	11.5	11.3	153.55	-212.8	161.3	468.9	447.7	21.24	22.080		
4,900.0	4,891.1	4,868.1	4,859.2	11.8	11.5	153.65	-218.7	164.8	481.8	460.1	21.70	22.203		
5,000.0	4,990.8	4,967.2	4,958.1	12.0	11.8	153.76	-224.6	168.4	494.6	472.5	22.16	22.321		

CC - Min centre to center distance or covergent point, SF - min separation factor, ES - min ellipse separation

<b>Company:</b>	Whiting Petroleum Corporation	<b>Local Co-ordinate Reference:</b>	Well Razor #26I-2316B
<b>Project:</b>	Weld County, CO	<b>TVD Reference:</b>	KB=16.5' @ 4728.2ft (Original Well Elev)
<b>Reference Site:</b>	S26-T10N-R58W	<b>MD Reference:</b>	KB=16.5' @ 4728.2ft (Original Well Elev)
<b>Site Error:</b>	0.0ft	<b>North Reference:</b>	Grid
<b>Reference Well:</b>	Razor #26I-2316B	<b>Survey Calculation Method:</b>	Minimum Curvature
<b>Well Error:</b>	0.0ft	<b>Output errors are at</b>	2.00 sigma
<b>Reference Wellbore</b>	HZ	<b>Database:</b>	USA EDM 5000 Multi Users DB
<b>Reference Design:</b>	Plan #2	<b>Offset TVD Reference:</b>	Offset Datum

Reference Depths are relative to KB=16.5' @ 4728.2ft (Original Well EI)      Coordinates are relative to: Razor #26I-2316B  
 Offset Depths are relative to Offset Datum      Coordinate System is US State Plane 1983, Colorado Northern Zone  
 Central Meridian is 105° 30' 0.00 W °      Grid Convergence at Surface is: 1.08°

