

2010 UELS Alum.
Cap, 0.3' High
Lat: 40.816975°
Long: 103.822819°

WHITING OIL & GAS CORP.

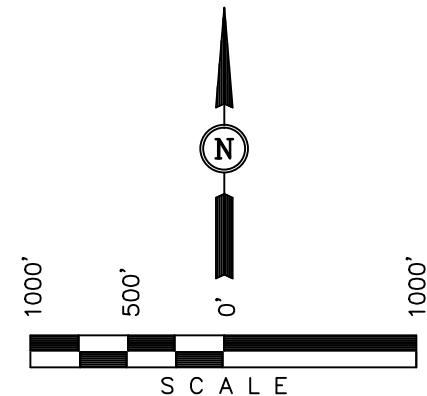
Well location, RAZOR #26I-2315A (SURFACE LOCATION), located as shown in the NE 1/4 SE 1/4 of Section 26, T10N, R58W, 6th P.M., Weld County, Colorado.

BASIS OF ELEVATION

SPOT ELEVATION LOCATED AT THE NORTHEAST CORNER OF SECTION 15, T9N, R58W, 6th P.M. TAKEN FROM THE GATEHOOK SPRING, QUADRANGLE, COLORADO, WELD COUNTY, 7.5 MINUTE QUAD (TOPOGRAPHIC MAP) PUBLISHED BY THE UNITED STATES DEPARTMENT OF THE INTERIOR, GEOLOGICAL SURVEY. SAID ELEVATION IS MARKED AS BEING 4679 FEET.

BASIS OF BEARINGS

BASIS OF BEARINGS IS A G.P.S. OBSERVATION.



CERTIFICATE

THIS IS TO CERTIFY THAT THE ABOVE PLAT WAS PREPARED FROM
FIELD NOTES OF ACTUAL SURVEYS MADE BY ME OR UNDER MY
SUPERVISION AND THAT THE SAME ARE TRUE AND CORRECT TO THE
BEST OF MY KNOWLEDGE AND BELIEF.

REGISTERED LAND SURVEYOR
REGISTRATION NO. 17492
STATE OF COLORADO




REVISÉD: 07-18-13 A.D.

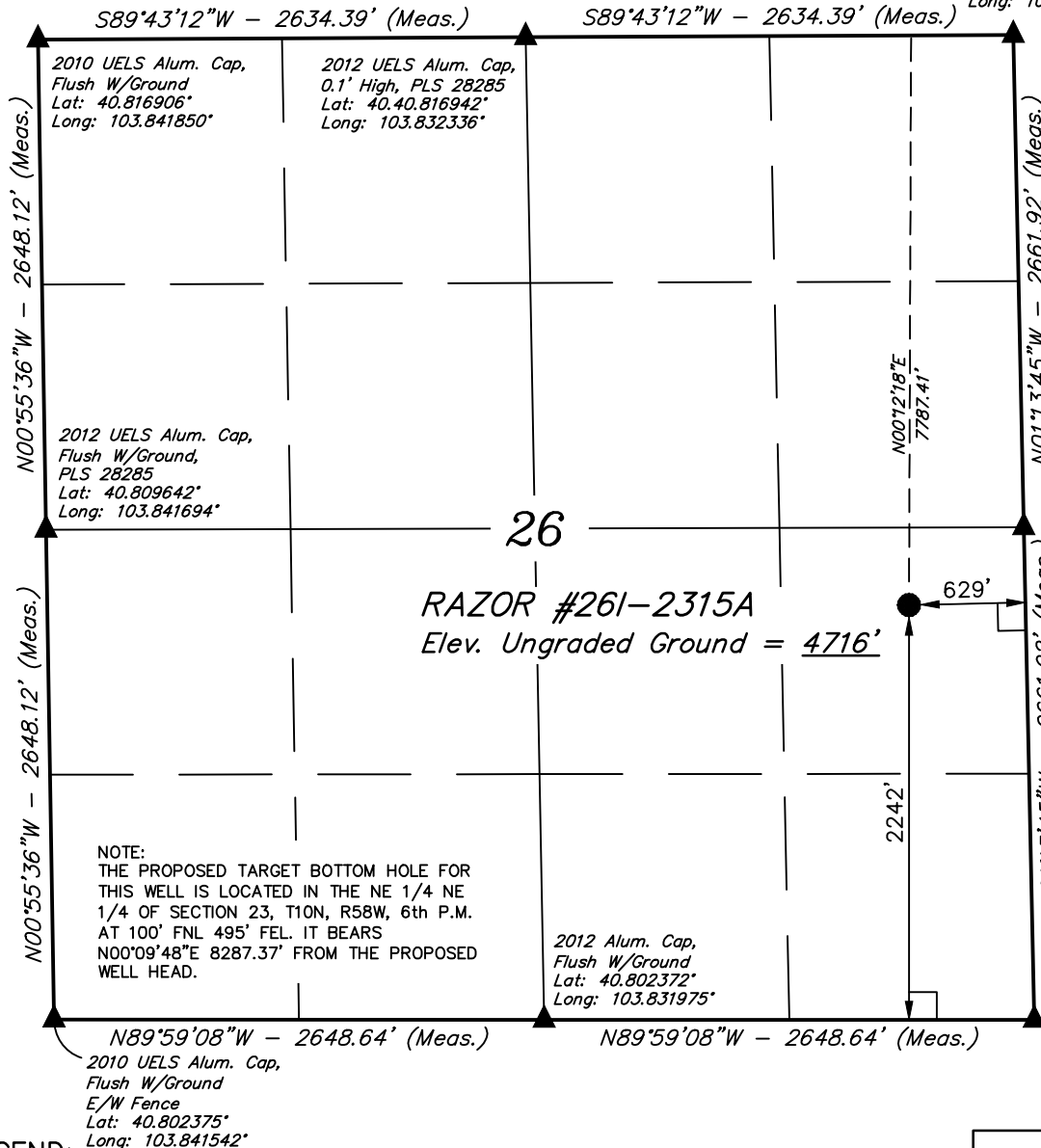
UTAH ENGINEERING & LAND SURVEYING
 85 SOUTH 200 EAST - VERNAL, UTAH 84078
 (435) 789-1017

PDOP = 1.2

NAD 83 (SURFACE LOCATION)	
LATITUDE =	40°48'30.68" (40.808522)
LONGITUDE =	103°49'29.48" (103.824856)
NAD 27 (SURFACE LOCATION)	
LATITUDE =	40°48'30.73" (40.808536)
LONGITUDE =	103°49'27.67" (103.824353)

LEGEND:

-  = 90° SYMBOL
 = PROPOSED WELL HEAD.
 = SECTION CORNERS LOCATED.



T10N, R58W, 6th P.M.

2010 UELS Alum. Cap,
0.5' Below Ground
Lat: 40.831497°
Long: 103.842233°

Stone
Lat: 40.831547°
Long: 103.822978°

WHITING OIL & GAS CORP.

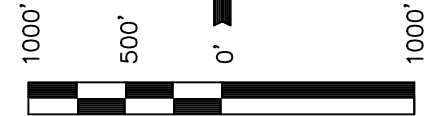
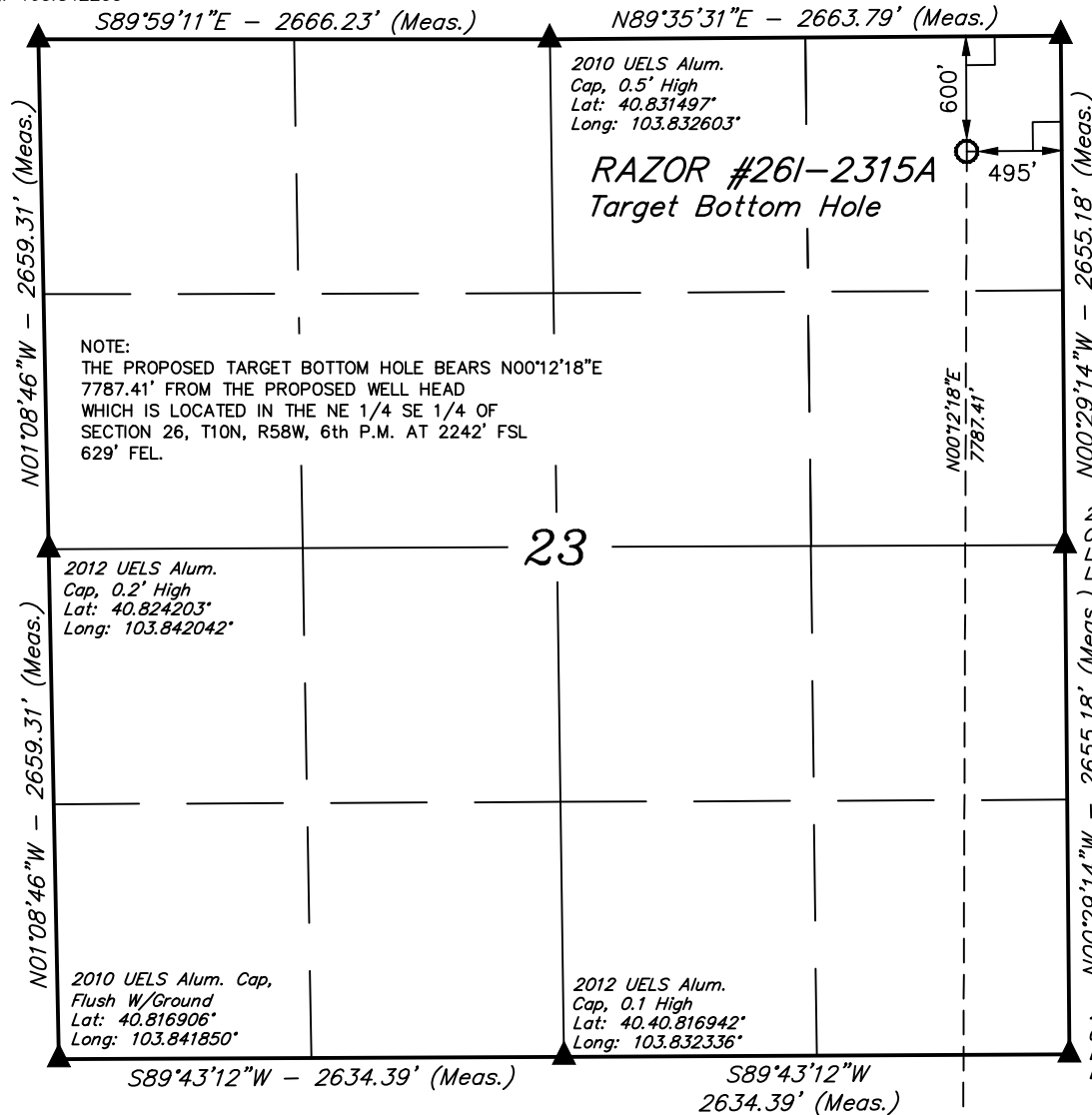
Well location, RAZOR #261-2315A (TARGET BOTTOM HOLE), located as shown in the NE 1/4 NE 1/4 of Section 23, T10N, R58W, 6th P.M., Weld County, Colorado.

BASIS OF ELEVATION

SPOT ELEVATION LOCATED AT THE NORTHEAST CORNER OF SECTION 15, T9N, R58W, 6th P.M. TAKEN FROM THE GATEHOOK SPRING, QUADRANGLE, COLORADO, WELD COUNTY, 7.5 MINUTE QUAD (TOPOGRAPHIC MAP) PUBLISHED BY THE UNITED STATES DEPARTMENT OF THE INTERIOR, GEOLOGICAL SURVEY. SAID ELEVATION IS MARKED AS BEING 4679 FEET.

BASIS OF BEARINGS

BASIS OF BEARINGS IS A G.P.S. OBSERVATION.



SCALE

CERTIFICATE

THIS IS TO CERTIFY THAT THE ABOVE PLAT WAS PREPARED FROM FIELD NOTES OF ACTUAL SURVEYS MADE BY ME OR UNDER MY SUPERVISION AND THAT THE SAME ARE TRUE AND CORRECT TO THE BEST OF MY KNOWLEDGE AND BELIEF.

REGISTERED LAND SURVEYOR
REGISTRATION NO. 17492
STATE OF COLORADO
RECEIVED
07-18-13

REVISED: 07-18-13 A.D.

UINTAH ENGINEERING & LAND SURVEYING
85 SOUTH 200 EAST - VERNAL, UTAH 84078
(435) 789-1017

LEGEND:

- └─┘ = 90° SYMBOL
- = PROPOSED WELL HEAD.
- ▲ = SECTION CORNERS LOCATED.

Surface Location ●

NAD 83 (TARGET BOTTOM HOLE)	
LATITUDE	= 40°49'47.61" (40.829892)
LONGITUDE	= 103°49'29.10" (103.824750)
NAD 27 (TARGET BOTTOM HOLE)	
LATITUDE	= 40°49'47.66" (40.829906)
LONGITUDE	= 103°49'27.29" (103.824247)

SCALE 1" = 1000'	DATE SURVEYED: 03-19-13	DATE DRAWN: 03-25-13
PARTY T.B. C.B. H.K.W.	REFERENCES G.L.O. PLAT	
WEATHER COLD	FILE WHITING OIL & GAS CORP.	