

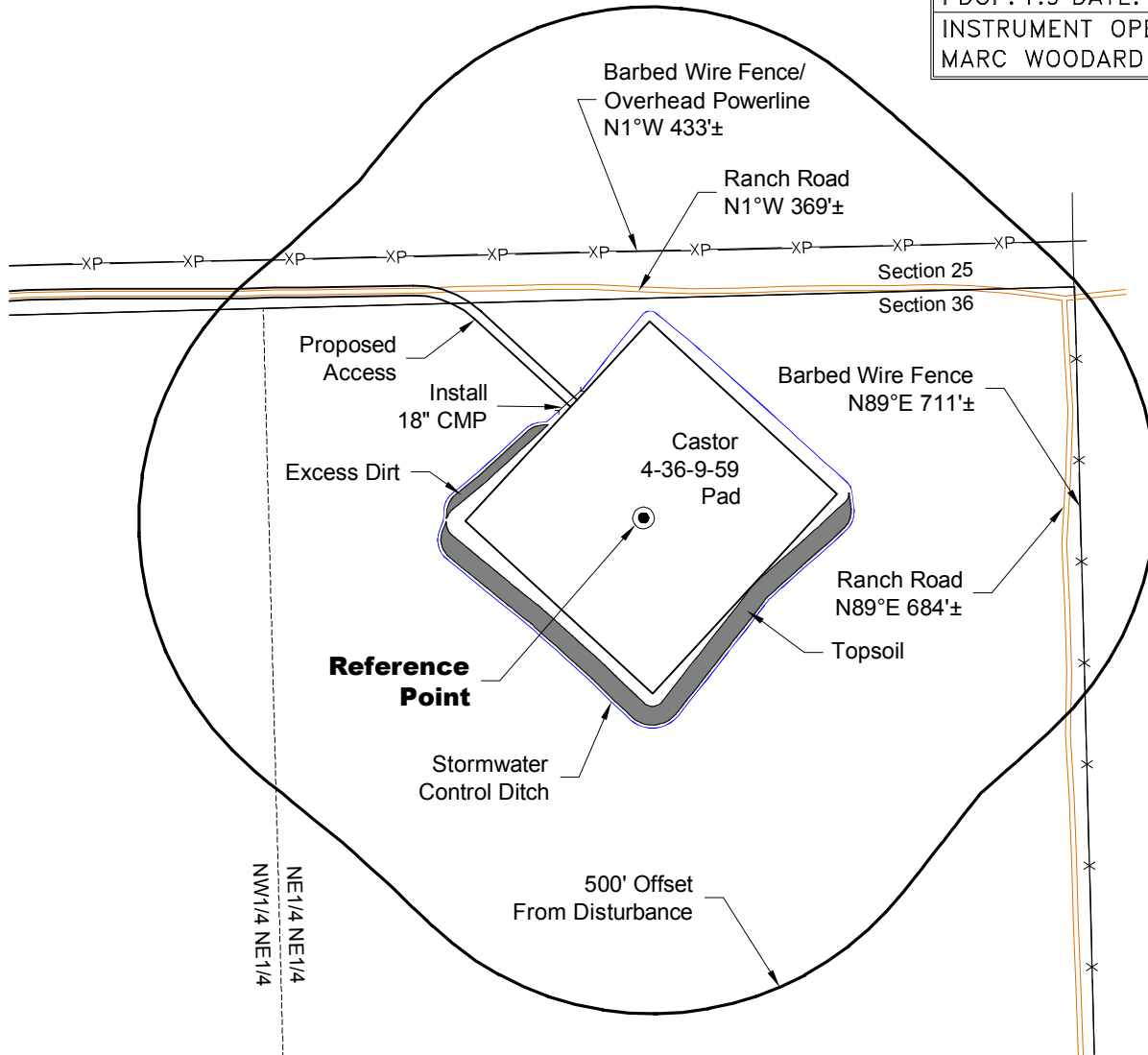
# LOCATION DRAWING

VEGETATION:  
DRY LAND PASTURE

SURFACE USE:  
GRAZING

## REFERENCE POINT

LATITUDE: 40.71351
LONGITUDE: -103.91896
FOOTAGE: 357 FNL 711 FEL
GROUND ELEVATION: 4890.0
PDOP: 1.9 DATE: 7/24/2013
INSTRUMENT OPERATOR: MARC WOODARD



## NOTE-DISTANCE TO NEAREST:

Property Line - N89°E 711'±  
Public Road - CR 104 - N24°W 2.3± Miles  
Building - N90°E 3.0± Miles  
Railroad - S 32.5± Miles  
Powerline - N1°W 433'±

DISTURBANCE ACREAGE:  
6.7± DRILLING OPERATIONS

NOTE:  
ALL PRODUCTION FACILITIES WILL BE ON PAD.

9/6/13



LAND SURVEYING AND MAPPING  
LAFAYETTE - WINTER PARK  
Ph 303 666 0379 Fx 303 665 6320

**CARRIZO NIOBRARA LLC**  
**CASTOR 4-36-9-59 PAD**

**NE 1/4 NE 1/4 SEC. 36 T9N R59W**  
**6th PM WELD COUNTY COLORADO**