

CONSTRUCTION LAYOUT DRAWING

1 of 2

VEGETATION:
DRY LAND PASTURE

SURFACE USE:
GRAZING

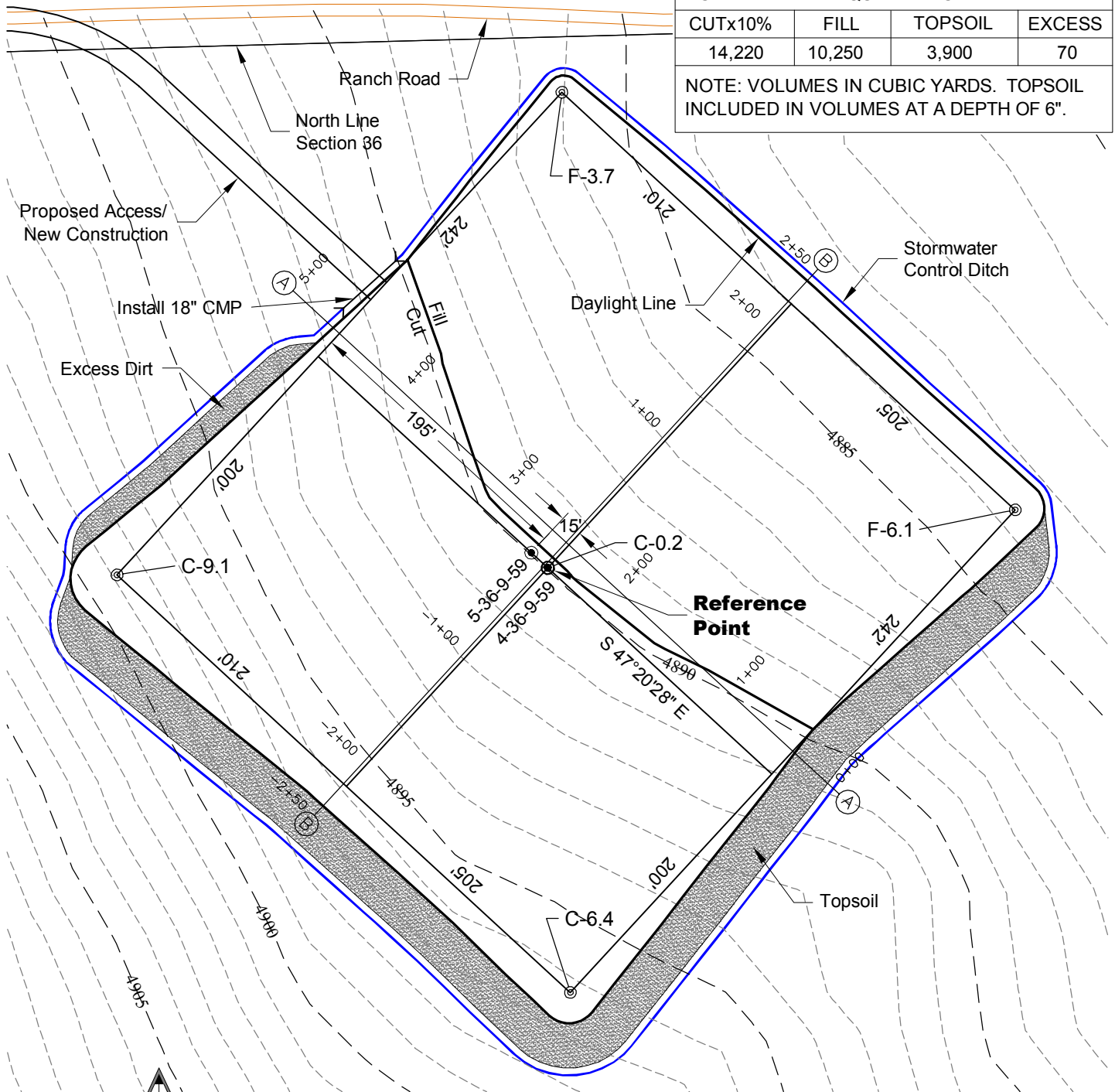
PAD= 415'X442' ELEV= 4889.8'

DISTURBED AREA= 6.7± ACRES

ESTIMATED DIRT QUANTITIES

CUTx10%	FILL	TOPSOIL	EXCESS
14,220	10,250	3,900	70

NOTE: VOLUMES IN CUBIC YARDS. TOPSOIL INCLUDED IN VOLUMES AT A DEPTH OF 6".



NOTE:
10% ALLOWANCE IS MADE FOR SOIL EXPANSION.

9/6/13

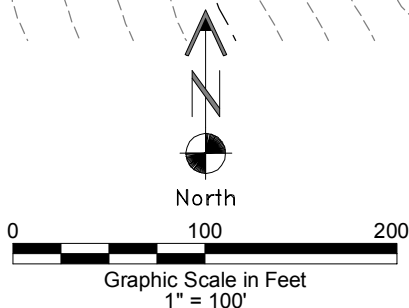
GEO SURV

LAND SURVEYING AND MAPPING
LAFAYETTE - WINTER PARK
Ph 303 666 0379 Fx 303 665 6320

CARRIZO NIOBRARA LLC
CASTOR 4-36-9-59 PAD

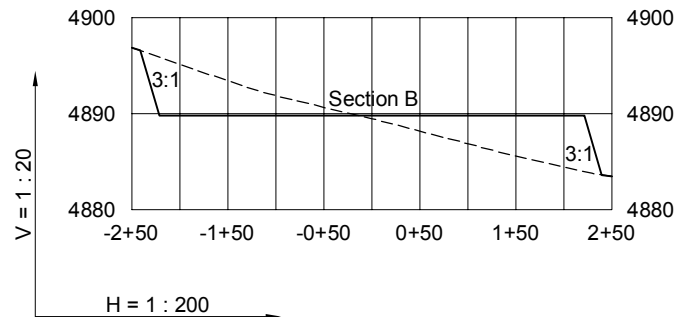
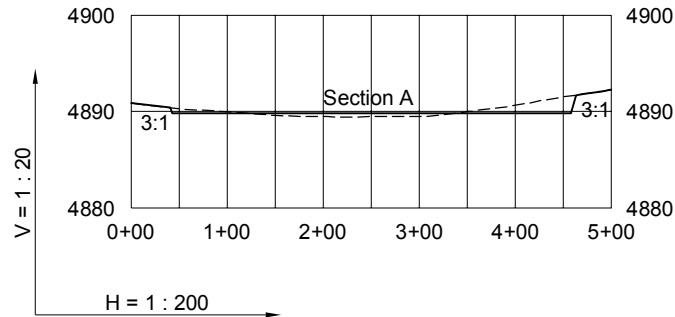
NE1/4 NE1/4 SEC. 36 T9N R59W
6th PM WELD COUNTY COLORADO

DWG: G:\GEO SURV\Well\North\Corrizo 36-11-9-59\Castor 4-36-9-59 F2A multi-well.dwg USER: MTC DATE: Sep 06, 2013 7:32am



CONSTRUCTION LAYOUT DRAWING

2 of 2



----- Existing Ground
 _____ Proposed Grade



LAND SURVEYING AND MAPPING
LAFAYETTE - WINTER PARK
 Ph 303 666 0379 Fx 303 665 6320

CARRIZO NIOBRARA LLC
CASTOR 4-36-9-59 PAD

NE1/4 NE1/4 SEC. 36 T9N R59W
6th PM WELD COUNTY COLORADO

9/6/13