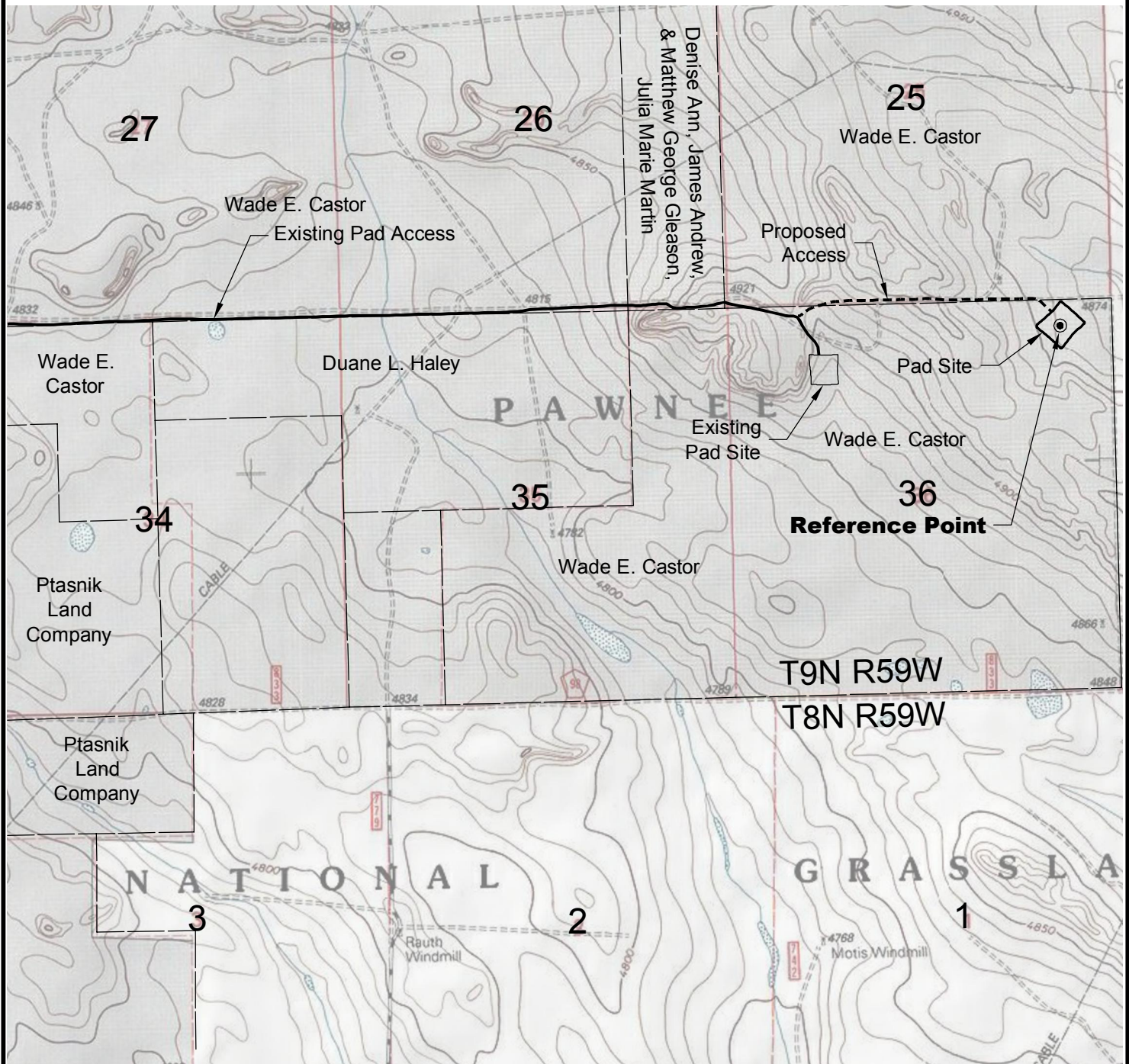


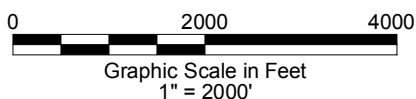
ACCESS ROAD MAP



DRIVING DIRECTIONS:

- MP 0.0 - Intersection of Highway 14 & WCR 129 in Raymer;
West on Highway 14
- MP 7.7 - Right on WCR 115; continue north on WCR 115
- MP 12.9 - End WCR 115; Continue north
- MP 14.2 - Right on access to East, Continue east to pad
- MP 17.1 - Castor 4-36-9-59 Pad

9/6/13



LAND SURVEYING AND MAPPING
LAFAYETTE - WINTER PARK
Ph 303 666 0379 Fx 303 665 6320

CARRIZO NIOBRARA LLC
CASTOR 4-36-9-59 PAD

NE1/4 NE1/4 SEC. 36 T9N R59W
6th PM WELD COUNTY COLORADO