

# T10N, R58W, 6th P.M.

# WHITING OIL & GAS CORP.

2010 UELS Alum. Cap,  
Flush W/Ground  
Lat: 40.816906°  
Long: 103.841850°

2012 UELS Alum. Cap,  
0.1' High, PLS 28285  
Lat: 40.816942°  
Long: 103.832336°

2010 UELS Alum.  
Cap, 0.3' High  
Lat: 40.816975°  
Long: 103.822819°

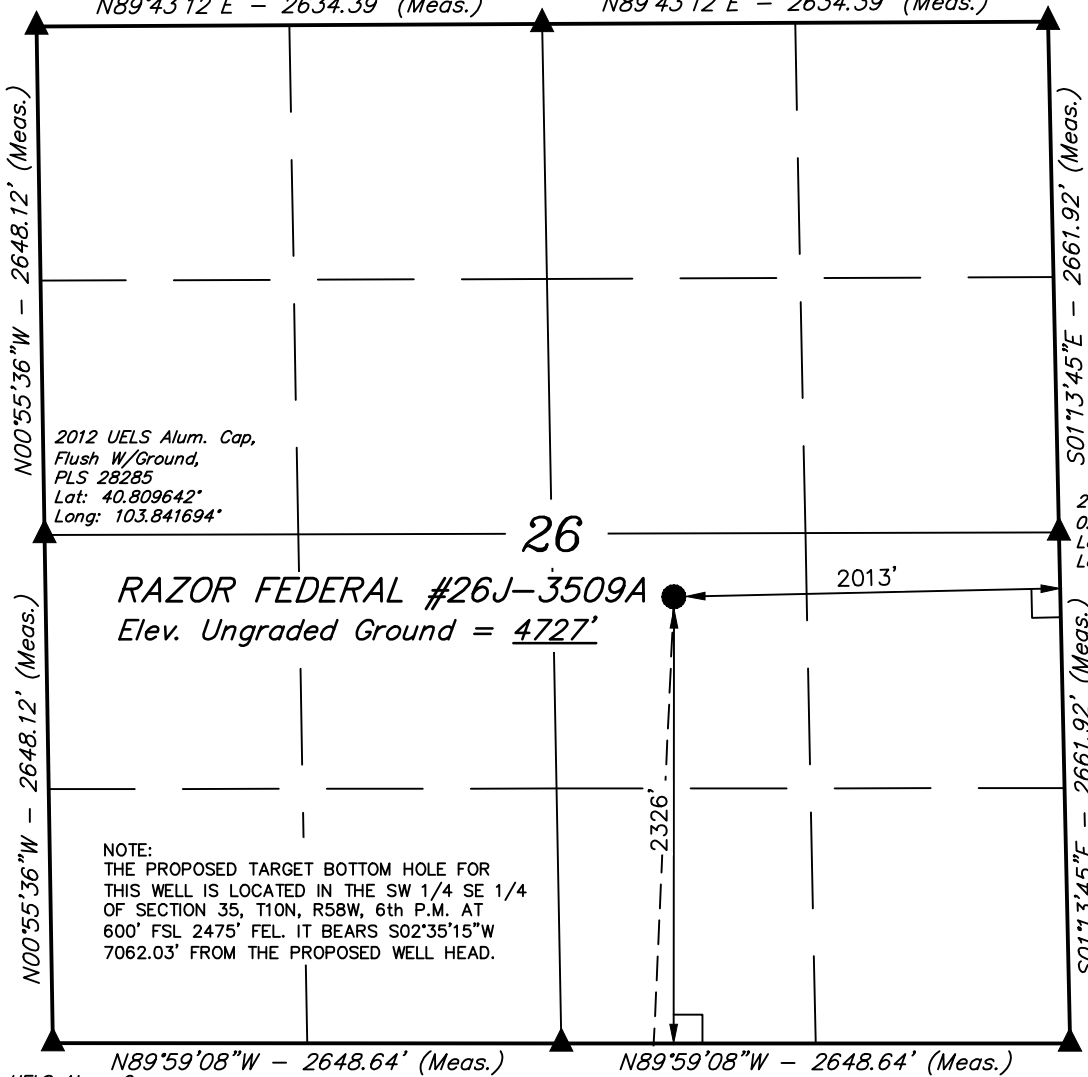
Well location, RAZOR FEDERAL #26J-3509A  
(SURFACE LOCATION), located as shown in the NW  
1/4 SE 1/4 of Section 26, T10N, R58W, 6th P.M.,  
Weld County, Colorado.

## BASIS OF ELEVATION

SPOT ELEVATION LOCATED AT THE NORTHEAST CORNER OF  
SECTION 15, T9N, R58W, 6th P.M. TAKEN FROM THE  
GATEHOOK SPRING, QUADRANGLE, COLORADO, WELD COUNTY,  
7.5 MINUTE QUAD (TOPOGRAPHIC MAP) PUBLISHED BY THE  
UNITED STATES DEPARTMENT OF THE INTERIOR, GEOLOGICAL  
SURVEY. SAID ELEVATION IS MARKED AS BEING 4679 FEET.

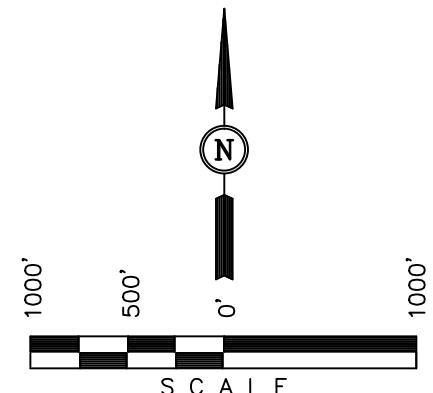
## BASIS OF BEARINGS

BASIS OF BEARINGS IS A G.P.S. OBSERVATION.



2012 UELS Alum. Cap,  
Flush W/Ground,  
PLS 28285  
Lat: 40.809642°  
Long: 103.841694°

2012 UELS Alum. Cap,  
0.1' High, PLS 28285  
Lat: 40.809672°  
Long: 103.822617°



## CERTIFICATE

THIS IS TO CERTIFY THAT THE ABOVE PLAT WAS PREPARED FROM  
FIELD NOTES OF ACTUAL SURVEYS MADE BY ME OR UNDER MY  
SUPERVISION AND THAT THE SAME ARE TRUE AND CORRECT TO THE  
BEST OF MY KNOWLEDGE AND BELIEF.

*Robert L. ...*  
REGISTERED LAND SURVEYOR  
REGISTRATION NO. 17492  
STATE OF COLORADO

REVISED: 06-29-13  
REVISED: 04-15-13

2010 UELS Alum. Cap,  
Flush W/Ground  
E/W Fence  
Lat: 40.802375°  
Long: 103.841542°

2012 Alum. Cap,  
Flush W/Ground  
PLS 28285  
Lat: 40.802372°  
Long: 103.831975°

2010 UELS Alum. Cap,  
Flush W/Ground  
Fence Corner  
Lat: 40.802369°  
Long: 103.822411°

**UINTAH ENGINEERING & LAND SURVEYING**  
85 SOUTH 200 EAST - VERNAL, UTAH 84078  
(435) 789-1017

## LEGEND:

- └─┘ = 90° SYMBOL
- = PROPOSED WELL HEAD.
- ▲ = SECTION CORNERS LOCATED.

Target Bottom Hole ○

PDOP = 1.5

|  |
|--|
| <b>NAD 83 (SURFACE LOCATION)</b>       |
| LATITUDE = 40°48'31.52" (40.808756)    |
| LONGITUDE = 103°49'47.49" (103.829858) |
| <b>NAD 27 (SURFACE LOCATION)</b>       |
| LATITUDE = 40°48'31.57" (40.808769)    |
| LONGITUDE = 103°49'45.69" (103.829358) |

|                         |                                 |                         |
|-------------------------|---------------------------------|-------------------------|
| SCALE<br>1" = 1000'     | DATE SURVEYED:<br>03-18-13      | DATE DRAWN:<br>03-21-13 |
| PARTY<br>C.B. C.M. J.S. | REFERENCES<br>G.L.O. PLAT       |                         |
| WEATHER<br>COOL         | FILE<br>WHITING OIL & GAS CORP. |                         |

# T10N, R58W, 6th P.M.

# WHITING OIL & GAS CORP.

2010 UELS Alum. Cap,  
Flush W/Ground  
E/W Fence  
Lat: 40.802375°  
Long: 103.841542°

2010 UELS Alum.  
Cap, Flush W/Ground  
Fence Corner  
Lat: 40.802369°  
Long: 103.822411°

● Surface Location  
↖

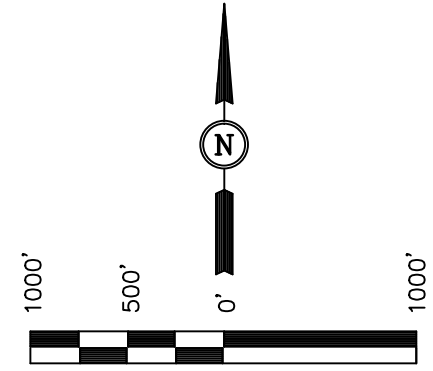
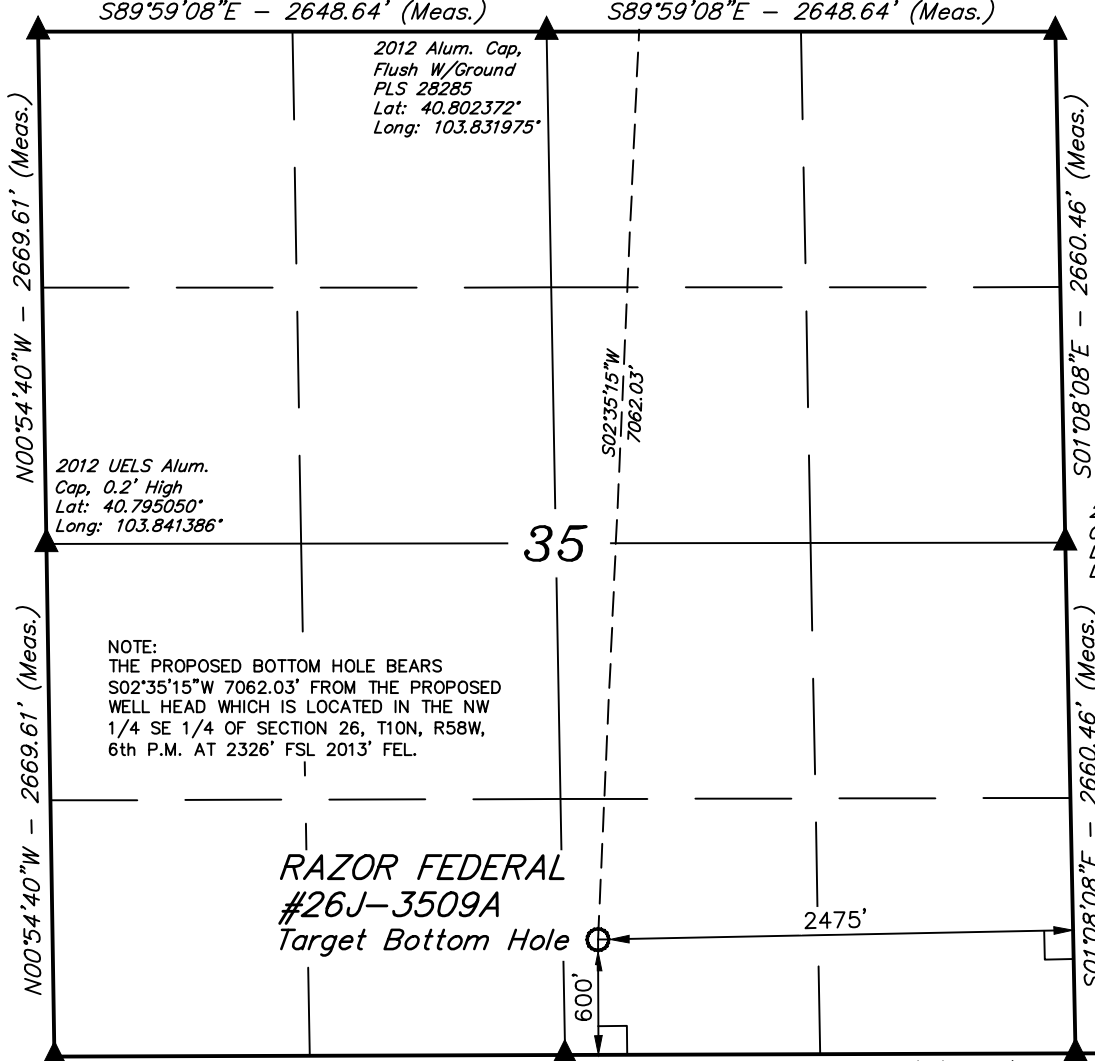
Well location, RAZOR FEDERAL #26J-3509A (TARGET BOTTOM HOLE), located as shown in the SW 1/4 SE 1/4 of Section 35, T10N, R58W, 6th P.M., Weld County, Colorado.

## BASIS OF ELEVATION

SPOT ELEVATION LOCATED AT THE NORTHEAST CORNER OF SECTION 15, T9N, R58W, 6th P.M. TAKEN FROM THE GATEHOOK SPRING, QUADRANGLE, COLORADO, WELD COUNTY, 7.5 MINUTE QUAD (TOPOGRAPHIC MAP) PUBLISHED BY THE UNITED STATES DEPARTMENT OF THE INTERIOR, GEOLOGICAL SURVEY. SAID ELEVATION IS MARKED AS BEING 4679 FEET.

## BASIS OF BEARINGS

BASIS OF BEARINGS IS A G.P.S. OBSERVATION.



## CERTIFICATE

THIS IS TO CERTIFY THAT THE ABOVE PLAT WAS PREPARED FROM FIELD NOTES OF ACTUAL SURVEYS MADE BY ME OR UNDER MY SUPERVISION AND THAT THE SAME ARE TRUE AND CORRECT TO THE BEST OF MY KNOWLEDGE AND BELIEF.

*Robert L. ...*  
 REGISTERED LAND SURVEYOR  
 REGISTRATION NO. 17492  
 STATE OF COLORADO  
 REVISED: 04-15-13

2010 UELS Alum. Cap, 0.3' High, Steel Post  
 Lat: 40.787725°  
 Long: 103.841233°

2010 UELS Alum. Cap,  
 Flush W/Ground  
 Lat: 40.787747°  
 Long: 103.831633°

2010 Alum. Cap  
 0.1' High, Steel Post  
 Lat: 40.787772°  
 Long: 103.822033°

REVISOR: 04-15-13  
**UINTAH ENGINEERING & LAND SURVEYING**  
 85 SOUTH 200 EAST - VERNAL, UTAH 84078  
 (435) 789-1017

- LEGEND:**
- └─┘ = 90° SYMBOL
  - = PROPOSED WELL HEAD.
  - ▲ = SECTION CORNERS LOCATED.

|                                    |                              |
|------------------------------------|------------------------------|
| <b>NAD 83 (TARGET BOTTOM HOLE)</b> |                              |
| LATITUDE                           | = 40°47'21.83" (40.789397)   |
| LONGITUDE                          | = 103°49'51.65" (103.831014) |
| <b>NAD 27 (TARGET BOTTOM HOLE)</b> |                              |
| LATITUDE                           | = 40°47'21.88" (40.789411)   |
| LONGITUDE                          | = 103°49'49.84" (103.830511) |

|                         |                                 |                         |
|-------------------------|---------------------------------|-------------------------|
| SCALE<br>1" = 1000'     | DATE SURVEYED:<br>03-18-13      | DATE DRAWN:<br>03-21-13 |
| PARTY<br>C.B. C.M. J.S. | REFERENCES<br>G.L.O. PLAT       |                         |
| WEATHER<br>COOL         | FILE<br>WHITING OIL & GAS CORP. |                         |