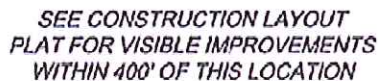


§



I, MICHAEL J. LANGHORNE, A REGISTERED LAND SURVEYOR IN THE STATE OF COLORADO DO HEREBY CERTIFY THAT THE SURVEY SHOWN HEREON WAS PREPARED UNDER MY DIRECT SUPERVISION AND HAS BEEN STAKED ON THE GROUND AS SHOWN ON THE PLAT AND CHECKING THAT THIS MAP IS A TRUE REPRESENTATION THEREOF.

MICHAEL J. LARSEN HORNE COLORADO REGISTRATION NO. 36572
FOR AND ON BEHALF OF
BOOKCLIFF SURVEY SERVICES, INC.

1) DEPENDENT RESURVEY T. 7 S., R. 95 W., 6 in P.M (GLO PLAT)
2) U.S.G.S QUAD: PARACHUTE CO

FIELD LOCATED SECTION
MONUMENTS AS DESCRIBEDFIELD SURVEYED
WELL LOCATION

CALCULATED BOTTOM HOLE LOCATION

**CALCULATED SECTION
CORNER LOCATION**

- 1) ELEVATIONS BASED ON N.A.V.D. 1988 PUBLISHED COORDINATES.
- 2) LATITUDES AND LONGITUDES ARE BASE ON NAD 83, PUBLISHED COORDINATES
- 3) STATE PLANE COORDINATES ARE BASED ON COLORADO CENTRAL ZONE, U.S. SURVEY FEET.
- 4) ELEVATION MASK SET TO 15'
- 5) GPS OPERATOR J. KIRKPATRICK, OBSERVED A PDGP 3.4 ON SURVEY POINT NUMBER 28507.
- 6) SURFACE AND BOTTOM HOLE LOCATIONS ARE MEASURED 90' FROM SECTION LINES.

WELL LOCATION PLAT Prepared for:
WPXENERGY, LP
10000 West 10th Avenue, Suite 1000
Denver, CO 80231
Tel: 303.733.7000
Fax: 303.733.7001
www.wpxenergy.com

SW1/4 SW1/4, SECTION 6
T. 7 S., R. 95 W. of the 6th. P.M.
GARFIELD COUNTY, COLORADO



| | |
|--------------|------------|
| SURVEY DATE: | 6/19/08 |
| MAP DATE: | 1/7/13 |
| SCALE: | 1" = 1000' |
| PLAT: | 1 of 1 |
| PROJECT: | Valley |