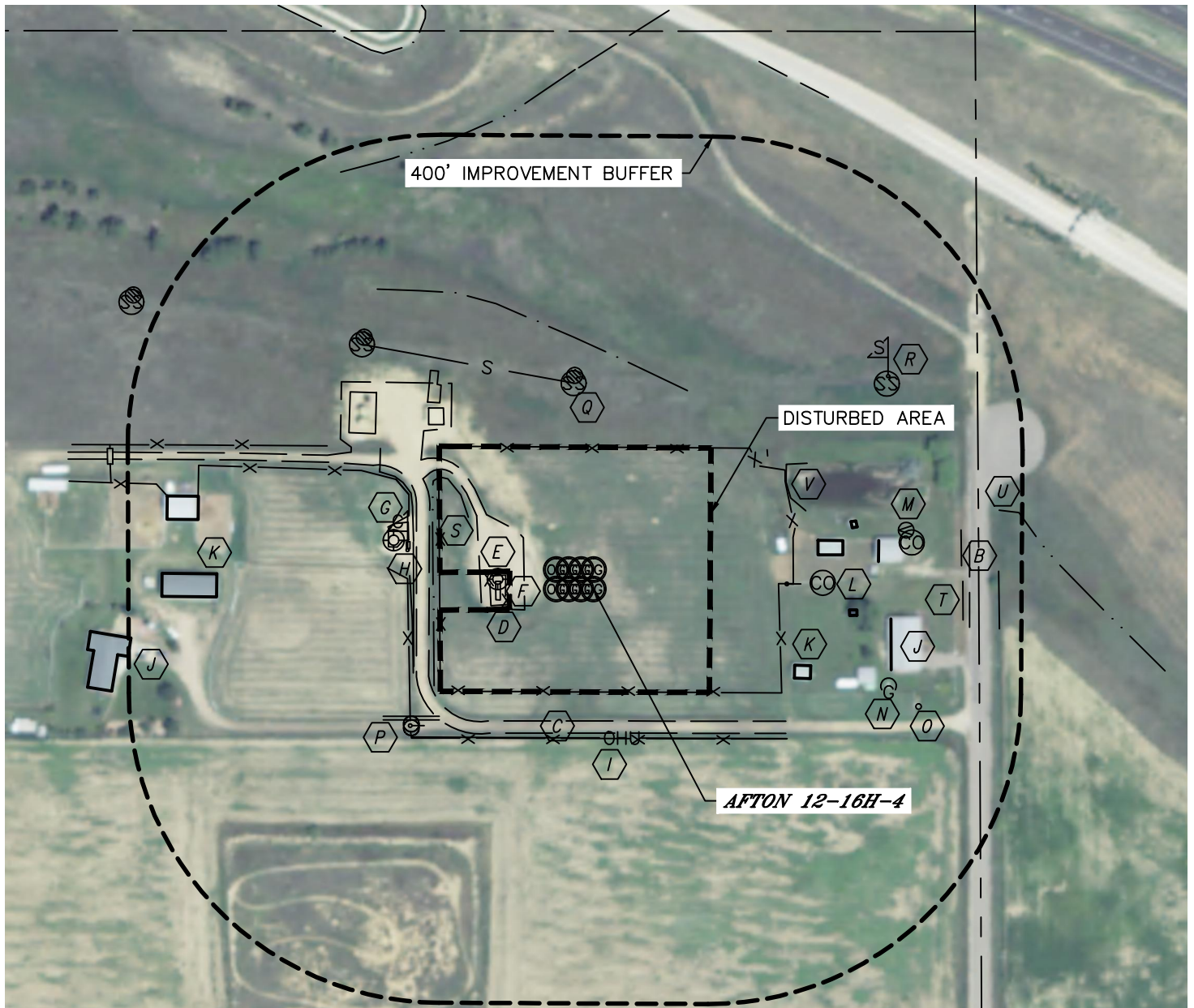




LOCATION DRAWING

AFTON HZ PAD

SECTION: 12
TOWNSHIP: 1S
RANGE: 68W



IMPROVEMENTS:

(MEASURED FROM THE PROPOSED AFTON 12-16H-4 WELL LOCATION)

- | | | |
|--|---|---|
| B COLORADO BLVD ±480' E | I OVERHEAD UTILITY LINE 191' S | Q SEWER MANHOLE 266' N, 433' NW, 460' NE |
| C ACCESS ROAD 169' S, 211' W | J DWELLING 384' SE, ±596' SW | R SEWER MARKER 467' NE |
| D FENCE 113', 197' W & 238' W, 132' S, 238' E, 182' N, 388' NW | K OUT-BUILDING 276' & 356' SE, 292', 341' & 372' NE, 330' E, ±482' W, ±515' NW | S DITCH 185' & 605' NW, 206' & 231' W, 283' NE |
| E EX. WELLHEAD 124' W, 264' NW | L CLEAN-OUT 295' E, 413' NE | T BARROW DITCH 474' & 521' E |
| F EX. EDGE OF DISTURBANCE 89' W, 276' NW | M SPIGOT 409' NE | U SWALE 531' NE |
| G EX. PRODUCTION EQUIPMENT (SCHNEIDER) 241', 285', 310' & 344' NW | N PROPANE TANK 399' SE | V POND 279' NE |
| H GAS MARKER 244' NW | O CISTERN LID 444' SE | |
| | P SIGN 285' & 288' SW | |

NEAREST: BUILDING 276' SE (OUT-BUILDING), PUBLIC ROAD ±480' E (COLORADO BLVD), ABOVE GROUND UTILITY 191' S, RAILROAD 1520' NW, PROPERTY LINE 133' S

DATE: rev.9/17/2013
PROJECT#: 2013026