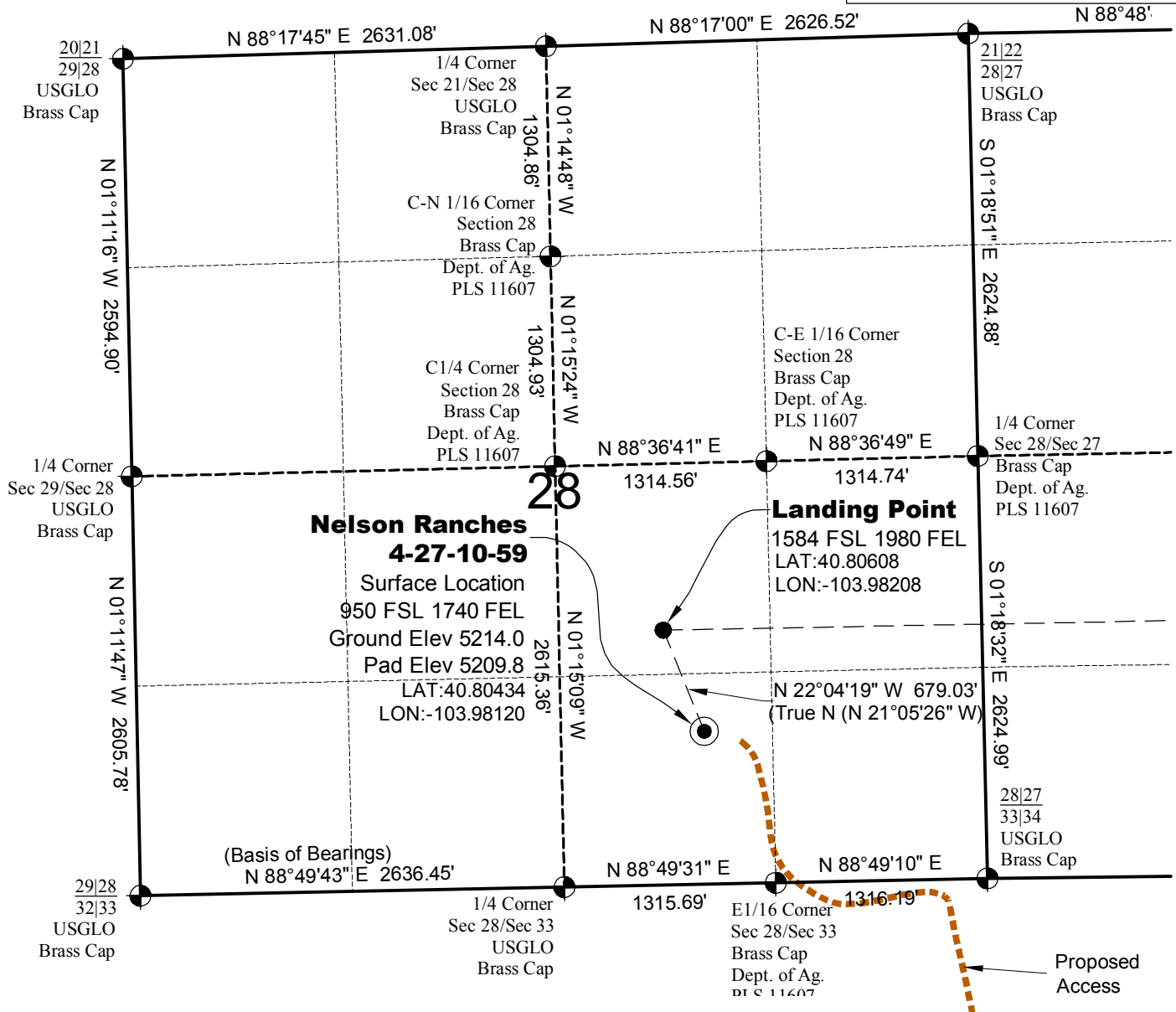


WELL LOCATION MAP

**NELSON RANCHES
1-33-10-59 PAD**

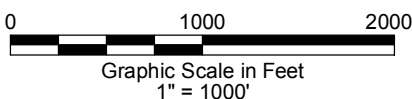


SURVEYOR'S STATEMENT

The undersigned hereby states that the well location shown hereon was staked on the ground based on existing monumentation and/or physical evidence found in the field and is correct to the best of my knowledge, information and belief.

NOTES

- 1.) Horizontal (NAD 83) and vertical (NAVD 88) datum is based on the Leica Geosystems SmartNet of Colorado.
 - 2.) All directions, distances, and dimensions shown hereon are based on coordinates from the "Colorado coordinate system of 1983 north zone" (article 52 of title 38, C.R.S.).
 - 3.) All section line dimensions shown hereon are based on field measurements of existing monuments and/or physical evidence found in the field unless otherwise indicated. Refer to land survey plats deposited in Weld County.
 - 4.) Physical features shown hereon are for graphical representation only.
 - 5.) See Form 2A for visible improvements within 400' of wellhead.
 - 6.) Distances to nearest section lines are measured perpendicularly.
 - 7.) This is not a land survey nor land survey plat.
 - 8.) Date of Survey 3/13/13; Date of Drawing 5/16/13. REV 2
- PDOP Reading: 3.5 Instrument Operator: Marc Woodard



GEO SURV

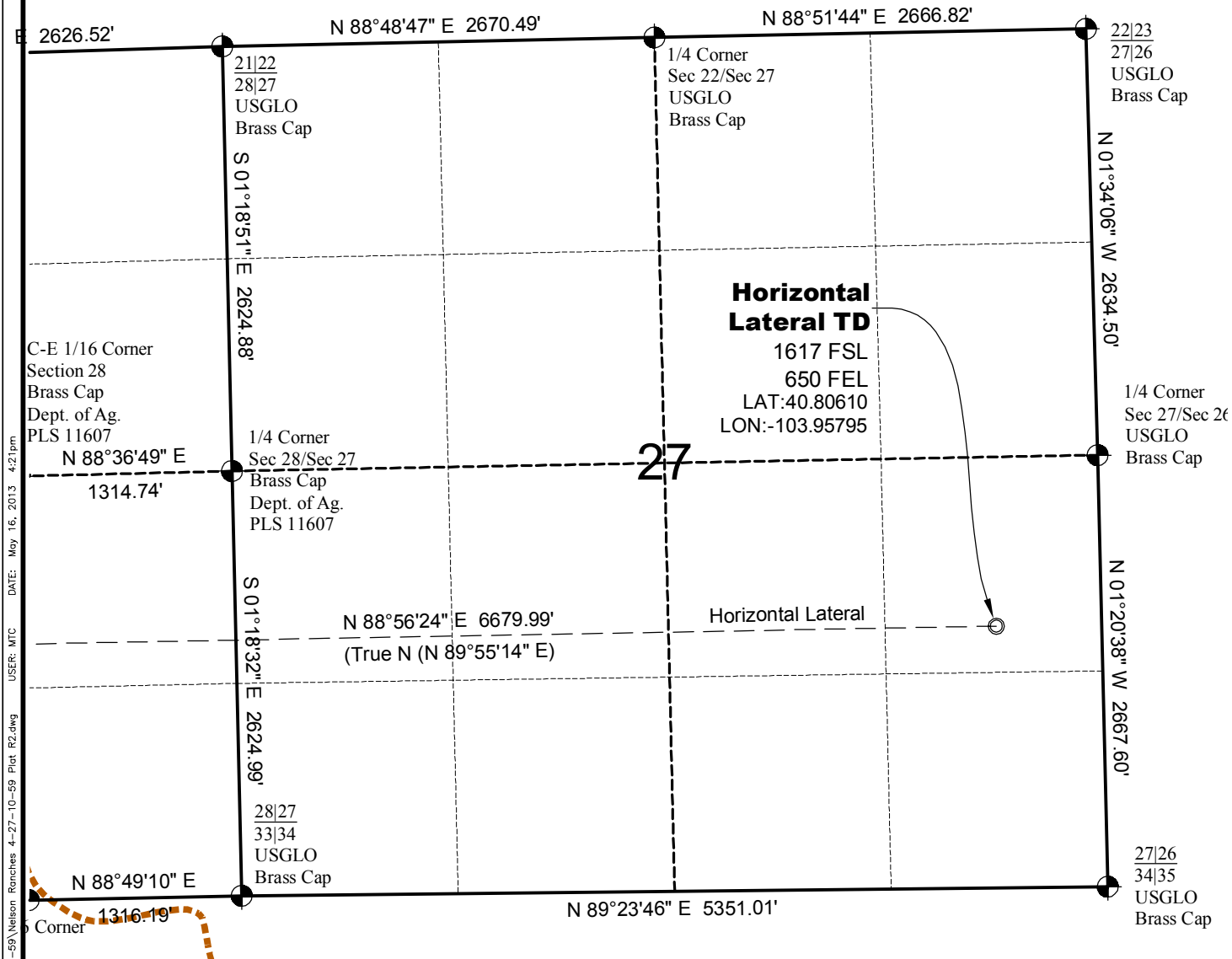
LAND SURVEYING AND MAPPING
LAFAYETTE - WINTER PARK
Ph 303 666 0379 Fx 303 665 6320

CARRIZO NIOBRARA LLC
NELSON RANCHES 4-27-10-59

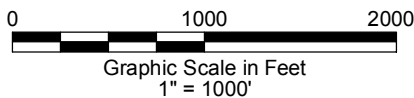
SL SW1/4 SE1/4 SEC. 28 T10N R59W
HL TD NE1/4 SE1/4 SEC. 27 T10N R59W
6th PM WELD COUNTY COLORADO

HORIZONTAL LATERAL TD MAP

NELSON RANCHES
1-33-10-59 PAD



North



CARRIZO NIOBRARA LLC
NELSON RANCHES 4-27-10-59

SL SW1/4 SE1/4 SEC. 28 T10N R59W
HL TD NE1/4 SE1/4 SEC. 27 T10N R59W
6th PM WELD COUNTY COLORADO