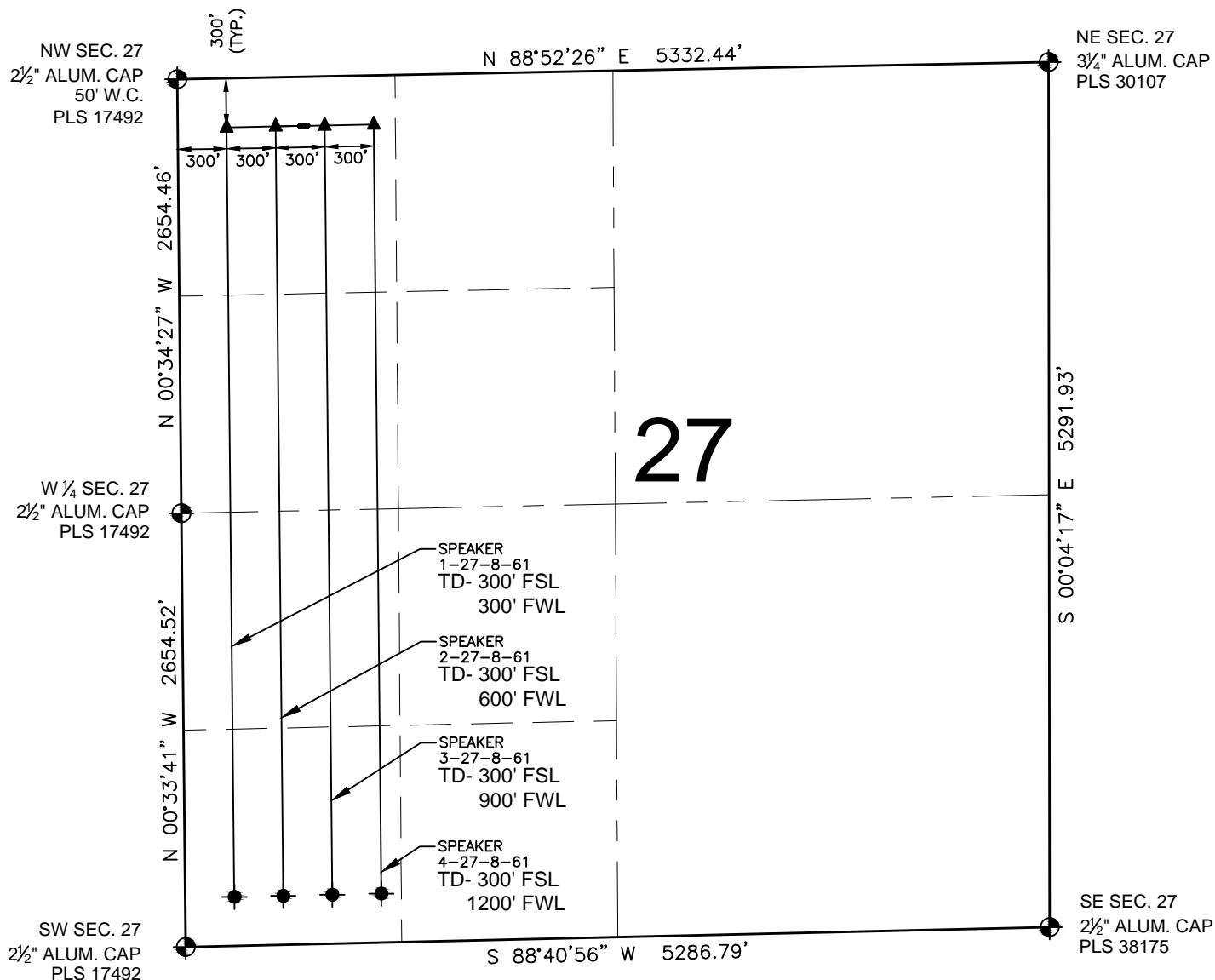


# SPEAKER 27-8-61 MULTI-WELL PLAN



## NOTES:

SPEAKER 1-27-8-61 TO BE AT 300' FNL, 749' FWL.  
 BOTTOM HOLE AT 300' FSL & 300' FWL.  
 SPEAKER 2-27-8-61 TO BE AT 300' FNL, 764' FWL.  
 BOTTOM HOLE AT 300' FSL & 600' FWL.  
 SPEAKER 3-27-8-61 TO BE AT 300' FNL, 779' FWL.  
 BOTTOM HOLE AT 300' FSL & 900' FWL.  
 SPEAKER 4-27-8-61 TO BE AT 300' FNL, 794' FWL.  
 BOTTOM HOLE AT 300' FSL & 1200' FWL.

## LEGEND

- ⊙ = EXISTING MONUMENT
- = MONUMENT NOT FOUND
- = PROPOSED WELL
- ◆ = EXISTING WELL
- ▲ = LANDING POINT
- ⬢ = HORIZONTAL LATERAL TD
- TD = HORIZONTAL LATERAL TD

PREPARED BY:



**PFS** Petroleum Field Services, LLC  
 1801 W. 13th Ave.  
 Denver, CO 80204

CARRIZO NIOBRARA LLC

FIELD DATE:

06-11-13

DRAWING DATE:

07-24-13

SURFACE LOCATION:

NW 1/4, NW 1/4, SEC. 27, T8N, R61W, 6TH P.M.  
 WELD COUNTY, COLORADO

