

WELL LOCATION PLAT

T4S, R65W, 6th P.M.

ConocoPhillips Company

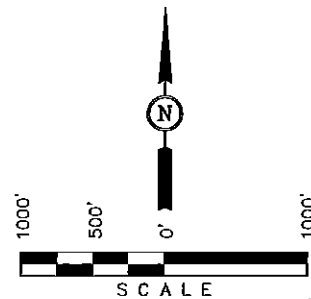
Well location, COTTONWOOD CREEK #4-65 27-1H, located as shown in the SW 1/4 NW 1/4 of Section 27, T4S, R65W, 6th P.M. Arapahoe County, Colorado.

BASIS OF ELEVATION

BENCHMARK 374 LOCATED ON THE SECTION LINE BETWEEN SECTIONS 12 & 13, T5S, R64W, 6th P.M., TAKEN FROM 1988 PUBLISHED DATUM BY THE UNITED STATES DEPARTMENT OF THE INTERIOR, GEOLOGICAL SURVEY AS BEING 6054.61 FEET.

BASIS OF BEARINGS

BASIS OF BEARINGS IS A G.P.S. OBSERVATION.



CERTIFICATE

THIS IS TO CERTIFY THAT THE ABOVE PLAT WAS PREPARED FROM FIELD NOTES OF ACTUAL SURVEY MADE BY ME OR UNDER MY SUPERVISION AND THAT THE SAME ARE TRUE AND CORRECT TO THE BEST OF MY KNOWLEDGE AND BELIEF.

REGISTERED LAND SURVEYOR
REGISTRATION NO. 28285
STATE OF COLORADO

REVISED: 09-09-13

UINTAH ENGINEERING & LAND SURVEYING

85 SOUTH 200 EAST - VERNAL, UTAH 84078

(435) 789-1017

SCALE 1" = 1000'	DATE SURVEYED: 07-15-13	DATE DRAWN: 07-17-13
PARTY J.H. C.M. A.D.	REFERENCES G.L.O. PLAT	
WEATHER HOT	FILE ConocoPhillips Company	

1985 Private Brass Cap,
#15649, In Range Box,
2.4' Below Ground
Lat: 39.681961°
Long: 104.659522°

1993 Private Brass Cap,
#15244, 2.1' Below Ground
Lat: 39.681972°
Long: 104.640886°

1993 Private Brass Cap,
#15244, 2.1' Below Ground
Lat: 39.681964°
Long: 104.654864°

1993 Private Brass Cap,
#15244, In Range Box,
2.1' Below Ground
Lat: 39.681967°
Long: 104.650203°

1993 Private Brass Cap,
#15244, 0.9' Below Ground
Lat: 39.674692°
Long: 104.659592°

Found Hub, Jack & Disk,
Set 2013 UELS Alum. Cap,
#28285, 0.6' High
Lat: 39.667419°
Long: 104.659661°

1994 Private Brass Cap,
#16419, 1.5' Below
Ground, In Range Box
Lat: 39.667393°
Long: 104.640850°

1998 Private Brass Cap,
#13327, 0.9' Below
Ground, In Range Box
Lat: 39.667403°
Long: 104.650306°

LEGEND:

— = 90° SYMBOL

● = PROPOSED WELL HEAD.

▲ = SECTION CORNERS LOCATED

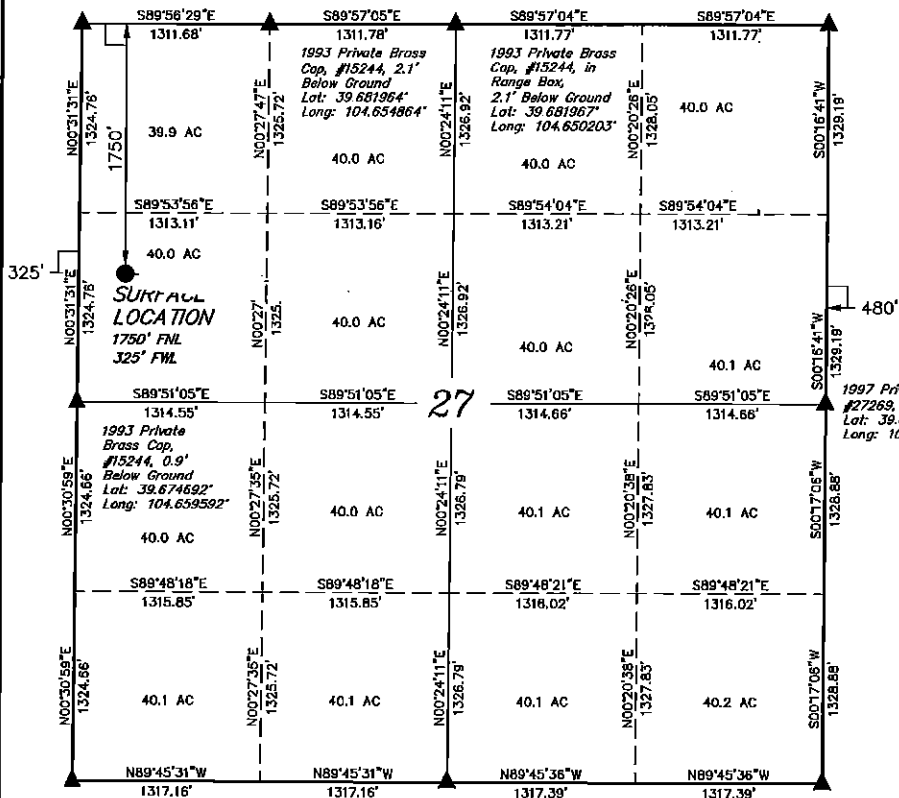
PDOP = 1.1

NAD 83 (SURFACE LOCATION)
LATITUDE = 39°40'37.78" (39.677161)
LONGITUDE = 104°39'30.29" (104.658414)
NAD 27 (SURFACE LOCATION)
LATITUDE = 39°40'37.82" (39.677172)
LONGITUDE = 104°39'28.40" (104.657889)

SECTION BREAKDOWN T4S, R65W, 6th P.M.

1985 Private Brass Cap,
#15548, in Range Box,
2.4' Below Ground
Lat: 39.681861°
Long: 104.658522°

1993 Private Brass Cap,
#15244, 2.1' Below Ground
Lat: 39.681972°
Long: 104.640885°



Found Hub, Tack & Disk,
Set 2013 UEL5 Alum. Cap,
#28285, 0.6' High
Lat: 39.667419°
Long: 104.659661°

1998 Private Brass Cap,
#13327, 0.9' Below
Ground, in Range Box
Lat: 39.667403°
Long: 104.650306°

1984 Private Brass Cap,
#16419, 1.5' Below
Ground, in Range Box
Lat: 39.667383°
Long: 104.640950°

LEGEND:

- = 90° SYMBOL
- = PROPOSED WELL HEAD.
- ▲ = SECTION CORNERS LOCATE

NAD 83 (SURFACE LOCATION)	PDOP = 1.1
LATITUDE = 39°40'37.78" (39.677161)	
LONGITUDE = 104°39'30.29" (104.658414)	
NAD 27 (SURFACE LOCATION)	
LATITUDE = 39°40'37.82" (39.677172)	
LONGITUDE = 104°39'28.40" (104.657889)	

ConocoPhillips Company

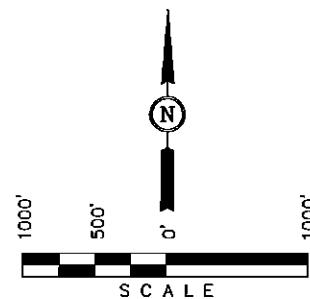
Well location, COTTONWOOD CREEK #4-65 27-1H,
located as shown in the SW 1/4 NW 1/4 of
Section 27, T4S, R65W, 6th P.M. Arapahoe
County, Colorado.

BASIS OF ELEVATION

BENCHMARK 374 LOCATED ON THE SECTION LINE BETWEEN
SECTIONS 12 & 13, T5S, R64W, 6th P.M., TAKEN FROM 1988
PUBLISHED DATUM BY THE UNITED STATES DEPARTMENT OF
THE INTERIOR, GEOLOGICAL SURVEY AS BEING 6054.61 FEET.

BASIS OF BEARINGS

BASIS OF BEARINGS IS A G.P.S. OBSERVATION.



CERTIFICATE

THIS IS TO CERTIFY THAT THE ABOVE MAP WAS PREPARED FROM
FIELD NOTES OF ACTUAL SURVEY MADE BY ME OR UNDER MY
SUPERVISION AND THAT THE SAME ARE TRUE AND CORRECT TO THE
BEST OF MY KNOWLEDGE AND BELIEF.

REGISTERED LAND SURVEYOR
REGISTRATION NO. 28285
STATE OF COLORADO
09-13

REVISED: 09-09-13

UNTAEH ENGINEERING & LAND SURVEYING

85 SOUTH 200 EAST - VERNAL, UTAH 84078

(435) 789-1017

SCALE 1" = 1000'	DATE SURVEYED: 07-15-13	DATE DRAWN: 07-17-13
PARTY J.H. C.M. A.D.	REFERENCES G.L.O. PLAT	
WEATHER HOT	FILE ConocoPhillips Company	