

Well Name: **Casa Loma 4-25**

Surface Location: Hirsch/Casa Loma 10 Pad Sec.26-T7N-R67W
North American Datum 1983 US State Plane 1983 Colorado Northern Zone

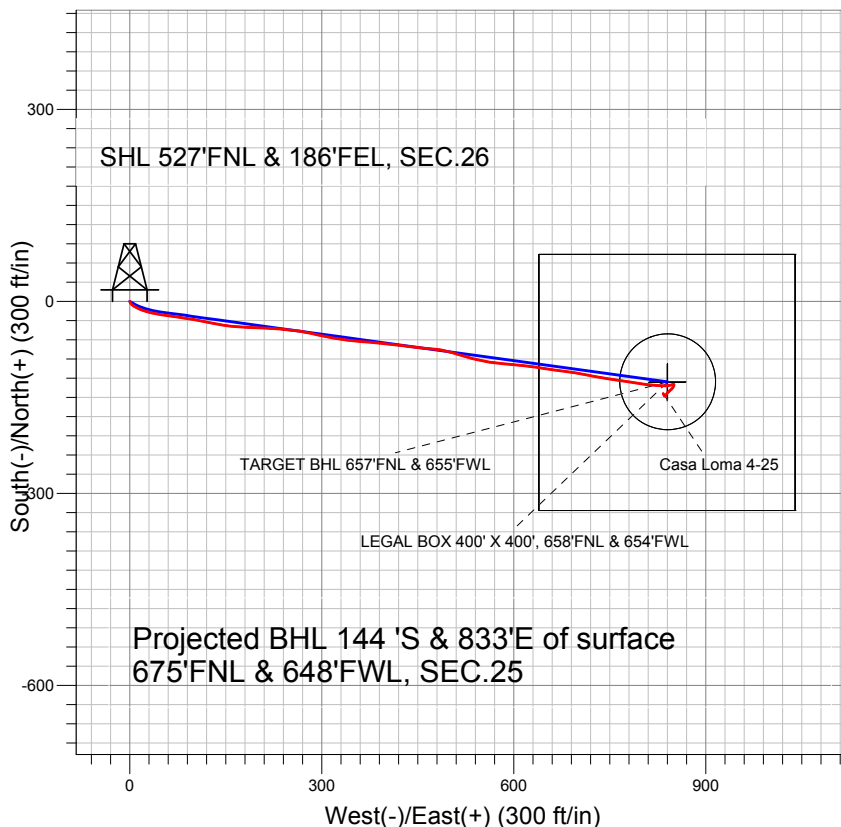
Ground Elevation: 4954.0

+N/-S	+E/-W	Northing	Easting	Latitude	Longitude
0.0	0.0	1444199.52	3180193.60	40.550919	-104.851560

Original Well Elev WELL @ 4970.0ft (Original Well Elev)

Slot

BAYSWATER EXPLORATION & PRODUCTION



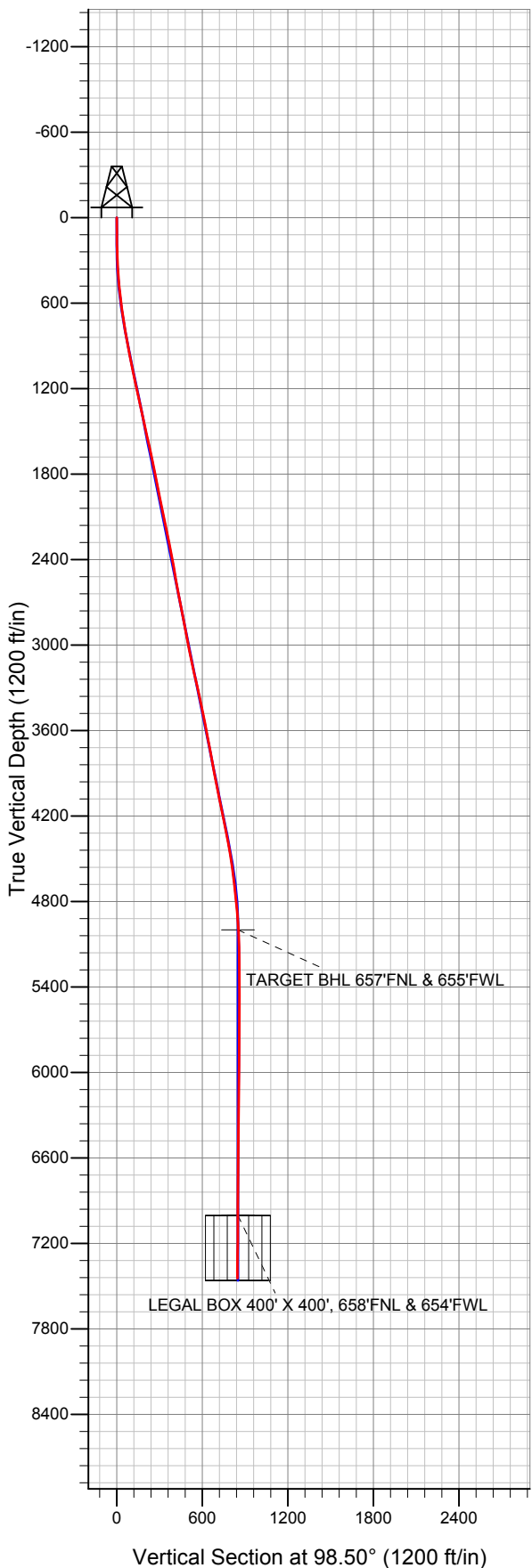
LEGEND

- △ Casa Loma 4-25, Wellbore #1, Plan #1 (2-13-13) R V0
- Wellbore #1
- Survey #1

Final Survey Plot

Projected Final Survey -
7525'MD & 7444'TVD @ 845'VS
1.1 deg Inc 338.0 deg AZ

Project: SEC.26-T7N-R67W
Site: Hirsch/Casa Loma 10 Pad Sec.26-T7N-R67W
Well: Casa Loma 4-25
Plan: Wellbore #1





Directional

BAYSWATER EXPLORATION & PRODUCTION

SEC.26-T7N-R67W

Hirsch/Casa Loma 10 Pad Sec.26-T7N-R67W

Casa Loma 4-25

Wellbore #1

Survey: Survey #1

Standard Survey Report

21 February, 2013

Survey										
	Measured Depth (ft)	Inclination (°)	Azimuth (°)	Vertical Depth (ft)	+N/-S (ft)	+E/-W (ft)	Vertical Section (ft)	Dogleg Rate (°/100ft)	Build Rate (°/100ft)	Turn Rate (°/100ft)
	0.0	0.00	0.00	0.0	0.0	0.0	0.0	0.00	0.00	0.00
	95.0	0.80	145.20	95.0	-0.5	0.4	0.5	0.84	0.84	0.00
	184.0	1.10	171.70	184.0	-1.9	0.9	1.1	0.59	0.34	29.78
	274.0	2.50	138.20	273.9	-4.2	2.3	2.9	1.88	1.56	-37.22
	365.0	3.90	123.70	364.8	-7.4	6.2	7.2	1.77	1.54	-15.93
	456.0	4.90	114.20	455.5	-10.7	12.3	13.8	1.36	1.10	-10.44
	546.0	6.80	109.70	545.1	-14.1	20.8	22.7	2.17	2.11	-5.00
	638.0	8.60	104.20	636.2	-17.6	32.6	34.9	2.11	1.96	-5.98
	732.0	9.30	99.10	729.1	-20.5	46.9	49.5	1.12	0.74	-5.43
	800.0	9.80	97.20	796.1	-22.1	58.1	60.7	0.87	0.74	-2.79
	893.0	10.10	99.50	887.7	-24.5	74.0	76.8	0.54	0.32	2.47
	987.0	10.60	97.90	980.2	-27.0	90.7	93.7	0.61	0.53	-1.70

Company:	BAYSWATER EXPLORATION & PRODUCTION	Local Co-ordinate Reference:	Well Casa Loma 4-25
Project:	SEC.26-T7N-R67W	TVD Reference:	WELL @ 4970.0ft (Original Well Elev)
Site:	Hirsch/Casa Loma 10 Pad Sec.26-T7N-R67W	MD Reference:	WELL @ 4970.0ft (Original Well Elev)
Well:	Casa Loma 4-25	North Reference:	True
Wellbore:	Wellbore #1	Survey Calculation Method:	Minimum Curvature
Design:	Wellbore #1	Database:	Landmark

Survey									
Measured Depth (ft)	Inclination (°)	Azimuth (°)	Vertical Depth (ft)	+N/-S (ft)	+E/-W (ft)	Vertical Section (ft)	Dogleg Rate (°/100ft)	Build Rate (°/100ft)	Turn Rate (°/100ft)
1,081.0	11.80	101.10	1,072.4	-30.1	108.7	111.9	1.44	1.28	3.40
1,174.0	11.80	100.90	1,163.5	-33.7	127.4	130.9	0.04	0.00	-0.22
1,268.0	12.00	99.70	1,255.4	-37.2	146.4	150.3	0.34	0.21	-1.28
1,362.0	12.90	94.60	1,347.2	-39.6	166.5	170.6	1.51	0.96	-5.43
1,455.0	12.50	91.40	1,438.0	-40.7	186.9	190.9	0.87	-0.43	-3.44
1,549.0	12.50	92.30	1,529.7	-41.4	207.3	211.1	0.21	0.00	0.96
1,643.0	12.50	95.60	1,621.5	-42.8	227.6	231.4	0.76	0.00	3.51
1,736.0	11.60	95.40	1,712.4	-44.6	246.9	250.8	0.97	-0.97	-0.22
1,830.0	11.40	97.40	1,804.6	-46.7	265.5	269.5	0.47	-0.21	2.13
1,924.0	11.00	102.10	1,896.8	-49.8	283.5	287.7	1.06	-0.43	5.00
2,018.0	11.20	103.70	1,989.0	-53.8	301.1	305.8	0.39	0.21	1.70
2,111.0	12.20	99.10	2,080.1	-57.5	319.6	324.6	1.47	1.08	-4.95
2,205.0	11.60	98.10	2,172.1	-60.4	338.8	344.0	0.67	-0.64	-1.06
2,299.0	11.40	93.30	2,264.2	-62.3	357.4	362.7	1.04	-0.21	-5.11
2,392.0	11.00	96.00	2,355.4	-63.8	375.4	380.7	0.71	-0.43	2.90
2,486.0	10.30	96.00	2,447.8	-65.6	392.7	398.1	0.74	-0.74	0.00
2,580.0	9.70	95.40	2,540.4	-67.2	408.9	414.4	0.65	-0.64	-0.64
2,673.0	10.50	97.00	2,631.9	-69.0	425.1	430.7	0.91	0.86	1.72
2,767.0	11.10	97.50	2,724.2	-71.2	442.6	448.3	0.65	0.64	0.53
2,861.0	10.70	95.80	2,816.6	-73.3	460.3	466.0	0.55	-0.43	-1.81
2,954.0	11.00	94.50	2,907.9	-74.8	477.7	483.5	0.42	0.32	-1.40
3,048.0	10.80	104.80	3,000.2	-77.8	495.1	501.2	2.08	-0.21	10.96
3,142.0	12.30	106.90	3,092.3	-82.9	513.2	519.9	1.66	1.60	2.23
3,235.0	12.80	104.80	3,183.1	-88.5	532.7	539.9	0.73	0.54	-2.26
3,329.0	12.00	101.60	3,274.9	-93.1	552.3	560.0	1.12	-0.85	-3.40
3,423.0	12.80	96.00	3,366.7	-96.1	572.2	580.2	1.54	0.85	-5.96
3,517.0	11.90	96.30	3,458.5	-98.3	592.2	600.3	0.96	-0.96	0.32
3,610.0	11.20	94.00	3,549.6	-100.0	610.8	618.8	0.90	-0.75	-2.47
3,704.0	10.30	99.00	3,642.0	-101.9	628.2	636.4	1.38	-0.96	5.32
3,798.0	10.60	98.60	3,734.4	-104.5	645.0	653.4	0.33	0.32	-0.43
3,891.0	10.60	97.70	3,825.8	-107.0	662.0	670.5	0.18	0.00	-0.97
3,985.0	10.80	97.20	3,918.2	-109.2	679.3	688.0	0.23	0.21	-0.53
4,079.0	11.10	99.10	4,010.5	-111.8	696.9	705.8	0.50	0.32	2.02
4,172.0	11.10	101.80	4,101.8	-115.0	714.5	723.7	0.56	0.00	2.90
4,266.0	11.80	100.20	4,193.9	-118.6	732.9	742.3	0.82	0.74	-1.70
4,360.0	11.50	98.60	4,285.9	-121.7	751.6	761.3	0.47	-0.32	-1.70
4,453.0	10.20	98.00	4,377.3	-124.2	768.9	778.8	1.40	-1.40	-0.65
4,547.0	9.80	98.30	4,469.9	-126.5	785.1	795.1	0.43	-0.43	0.32
4,641.0	8.20	99.10	4,562.7	-128.7	799.6	809.8	1.71	-1.70	0.85
4,735.0	6.50	94.60	4,655.9	-130.2	811.5	821.9	1.91	-1.81	-4.79
4,828.0	6.00	95.30	4,748.4	-131.1	821.6	832.0	0.54	-0.54	0.75
4,922.0	5.50	94.40	4,841.9	-131.9	831.0	841.4	0.54	-0.53	-0.96
5,016.0	3.80	84.40	4,935.6	-131.9	838.6	848.9	2.00	-1.81	-10.64
5,080.5	3.44	78.70	4,999.9	-131.3	842.6	852.8	0.78	-0.55	-8.84
TARGET BHL 657'FNL & 655'FWL									
5,109.0	3.30	75.80	5,028.4	-131.0	844.3	854.3	0.78	-0.51	-10.17
5,203.0	1.10	73.50	5,122.3	-130.0	847.7	857.7	2.34	-2.34	-2.45
5,297.0	0.50	74.00	5,216.3	-129.7	849.0	858.8	0.64	-0.64	0.53
5,390.0	0.30	55.00	5,309.3	-129.4	849.6	859.4	0.26	-0.22	-20.43
5,484.0	0.30	130.40	5,403.3	-129.4	850.0	859.8	0.39	0.00	80.21
5,578.0	0.90	183.50	5,497.3	-130.3	850.1	860.0	0.81	0.64	56.49
5,671.0	0.90	199.70	5,590.3	-131.7	849.8	860.0	0.27	0.00	17.42
5,765.0	1.10	210.60	5,684.3	-133.2	849.1	859.5	0.29	0.21	11.60

Company:	BAYSWATER EXPLORATION & PRODUCTION	Local Co-ordinate Reference:	Well Casa Loma 4-25
Project:	SEC.26-T7N-R67W	TVD Reference:	WELL @ 4970.0ft (Original Well Elev)
Site:	Hirsch/Casa Loma 10 Pad Sec.26-T7N-R67W	MD Reference:	WELL @ 4970.0ft (Original Well Elev)
Well:	Casa Loma 4-25	North Reference:	True
Wellbore:	Wellbore #1	Survey Calculation Method:	Minimum Curvature
Design:	Wellbore #1	Database:	Landmark

Survey									
Measured Depth (ft)	Inclination (°)	Azimuth (°)	Vertical Depth (ft)	+N/-S (ft)	+E/-W (ft)	Vertical Section (ft)	Dogleg Rate (°/100ft)	Build Rate (°/100ft)	Turn Rate (°/100ft)
5,859.0	1.00	208.10	5,778.3	-134.7	848.3	858.9	0.12	-0.11	-2.66
5,952.0	1.00	213.90	5,871.3	-136.1	847.4	858.3	0.11	0.00	6.24
6,046.0	1.00	228.20	5,965.2	-137.3	846.4	857.4	0.26	0.00	15.21
6,140.0	1.00	231.00	6,059.2	-138.4	845.1	856.3	0.05	0.00	2.98
6,234.0	1.00	235.50	6,153.2	-139.4	843.8	855.1	0.08	0.00	4.79
6,327.0	1.10	225.20	6,246.2	-140.5	842.5	854.0	0.23	0.11	-11.08
6,421.0	0.80	223.80	6,340.2	-141.6	841.4	853.1	0.32	-0.32	-1.49
6,515.0	0.70	232.00	6,434.2	-142.4	840.5	852.3	0.16	-0.11	8.72
6,608.0	0.80	208.50	6,527.2	-143.3	839.7	851.7	0.34	0.11	-25.27
6,702.0	0.90	214.40	6,621.2	-144.5	839.0	851.2	0.14	0.11	6.28
6,796.0	0.90	220.60	6,715.1	-145.7	838.1	850.5	0.10	0.00	6.60
6,889.0	0.50	209.50	6,808.1	-146.6	837.4	849.9	0.45	-0.43	-11.94
6,983.0	0.40	199.90	6,902.1	-147.3	837.1	849.7	0.13	-0.11	-10.21
7,077.0	0.40	219.20	6,996.1	-147.8	836.8	849.5	0.14	0.00	20.53
7,085.7	0.38	224.24	7,004.9	-147.9	836.8	849.4	0.45	-0.22	57.66
LEGAL BOX 400' X 400', 658'FNL & 654'FWL									
7,085.8	0.38	224.28	7,004.9	-147.9	836.8	849.4	0.45	-0.20	60.47
TARGET CIRCLE 657'FNL & 655'FWL									
7,170.0	0.40	282.10	7,089.1	-148.0	836.3	849.0	0.45	0.02	68.68
7,264.0	0.40	271.00	7,183.1	-147.9	835.6	848.3	0.08	0.00	-11.81
7,358.0	1.20	330.80	7,277.1	-147.1	834.8	847.4	1.12	0.85	63.62
7,452.0	1.20	332.00	7,371.1	-145.3	833.9	846.2	0.03	0.00	1.28
7,525.0	1.10	338.00	7,444.1	-144.0	833.3	845.4	0.21	-0.14	8.22

Checked By: _____ Approved By: _____ Date: _____