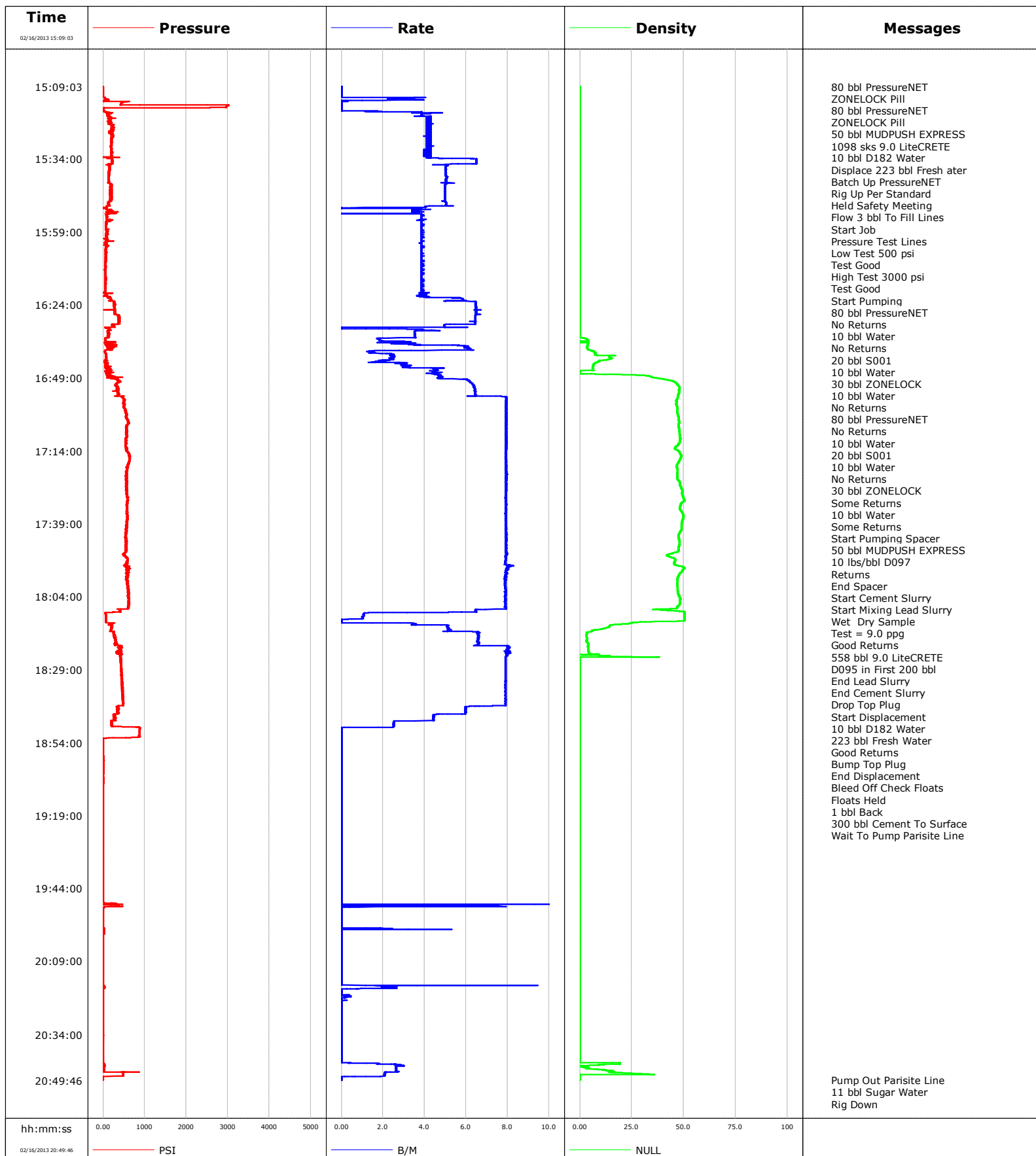


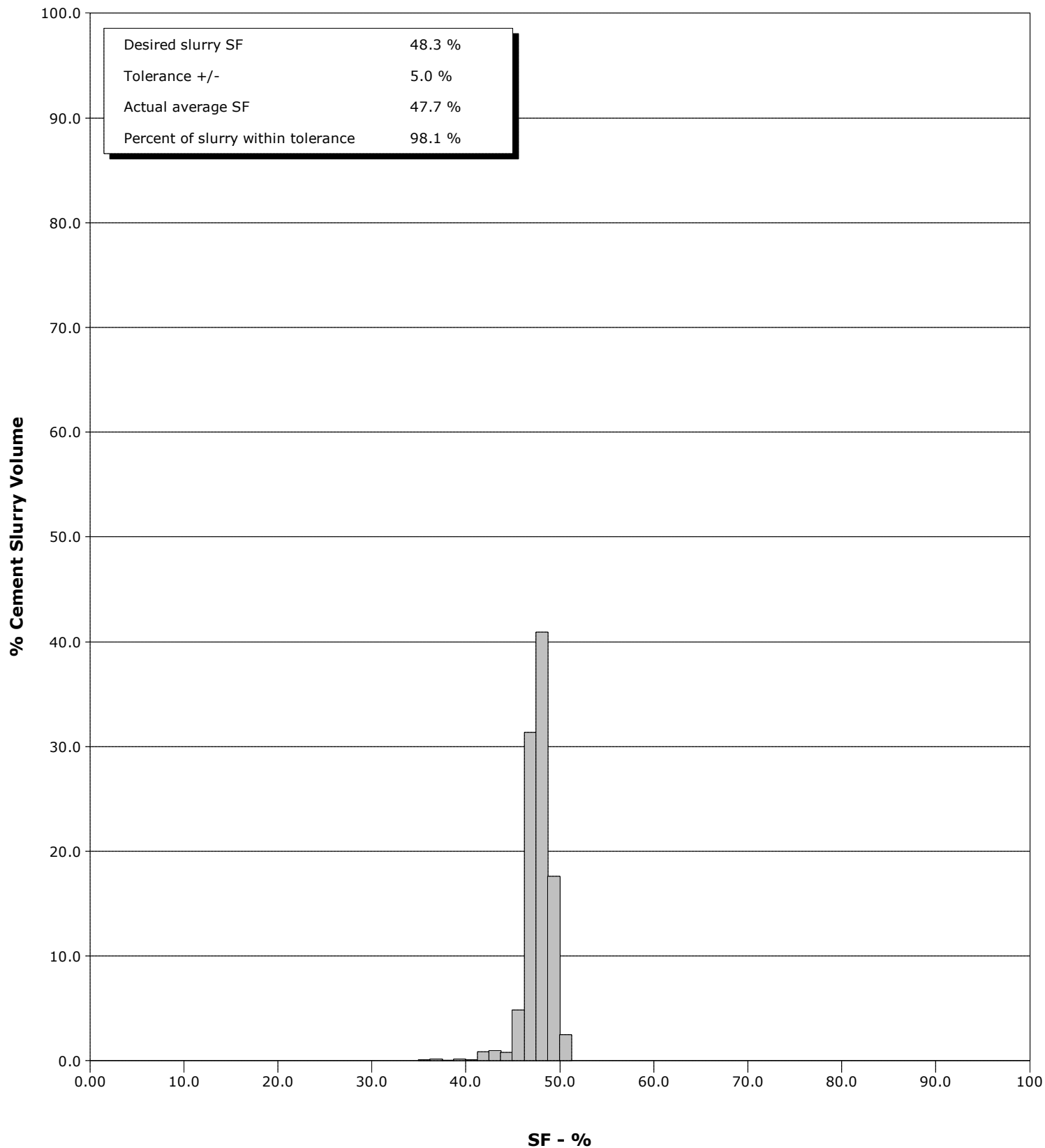
<b>Well</b>	SGU 8507C-35	<b>Client</b>	Encana
<b>Field</b>	Story Gulch Unit	<b>SIR No.</b>	
<b>Engineer</b>	Jordan Moreland	<b>Job Type</b>	9 5/8 Surface
<b>Country</b>	United States	<b>Job Date</b>	02-16-2013



**Well** SGU 8507C-35  
**Field** Story Gulch Unit  
**Engineer** Jordan Moreland  
**Country** United States

**Client** Encana  
**SIR No.**  
**Job Type** 9 5/8 Surface  
**Job Date** 02-16-2013

Cement Slurry - 02/16/2013 16:51:18 to 02/16/2013 18:09:51



## Cementing Service Report

					Customer		Job Number								
					Encana		CFA0-00169								
Well				Location (legal)		Schlumberger Location		Job Start							
SGU 8507C-35				D36		GCO		Feb/16/2013							
Field		Formation Name/Type		Deviation		Bit Size		Well MD		Well TVD					
Story Gulch Unit		s				14.8 in									
County		State/Province		BHP		BHST		BHCT		Pore Press. Gradient					
Garfield		Colorado				120 degF		96 degF							
Well Master		API/UWI													
Rig Name		Drilled For		Service Via		Casing/Liner									
Patterson 326		Gas		Land											
Offshore Zone		Well Class		Well Type		Depth, ft		Size, in		Weight, lb/ft		Grade		Thread	
		New		Development		120.0		20.000		94.0		J55		8RD	
						3066.0		9.630		36.0		J55		8RD	
Drilling Fluid Type		Max. Density		Plastic Viscosity		Tubing/Drill Pipe									
						Depth,		Size,		Weight,		Grade		Thread	
Service Line		Job Type													
Cementing		9 5/8 Surface													
Max. Allowed Tub. Press		Max. Allowed Ann. Press		WH Connection		Perforations/Open Hole									
3000 psi				Single Cement head		Top,		Bottom,				No. of Shots		Total Interval	
						Treat Down		Displacement		Packer Type		Packer Depth			
						Annulus		234.0 bbl							
						Tubing Vol.		Casing Vol.		Annular Vol.		Openhole Vol.			
								235.0 bbl		389.0 bbl		644.0 bbl			
Casing/Tubing Secured		1 Hole Vol. Circulated prior to Cement				Casing Tools				Squeeze Job					
<input checked="" type="checkbox"/>		<input checked="" type="checkbox"/>													
Lift Pressure		1517 psi		Shoe Type		Guide				Squeeze Type					
Pipe Rotated		Pipe Reciprocated		Shoe Depth		3066.0 ft				Tool Type					
<input type="checkbox"/>		<input type="checkbox"/>													
No. Centralizers		Top Plugs		Bottom Plugs		Stage Tool Type				Tool Depth					
		1													
Cement Head Type		Single <th colspan="4">Stage Tool Depth</th> <th colspan="4">Tail Pipe Size</th>		Stage Tool Depth				Tail Pipe Size							
Job Scheduled For		Arrived on Location		Leave Location		Collar Type				Tail Pipe Depth					
Feb/16/2013		Feb/16/2013		Feb/16/2013		Float									
						Collar Depth				Sqz. Total Vol.					
						3021.0 ft									
Date	Time 24-hr clock	Treating Pressure PSI	Flow Rate B/M	Density NULL	Volume BBL	Message									
02/16/2013	14:44:55					Started Acquisition									
02/16/2013	15:09:03					80 bbl PressureNET									
02/16/2013	15:09:03					ZONELOCK Pill									
02/16/2013	15:09:03					80 bbl PressureNET									
02/16/2013	15:09:03					ZONELOCK Pill									
02/16/2013	15:09:03	-5	0.0	0	0.0										
02/16/2013	15:09:04					50 bbl MUDPUSH EXPRESS									
02/16/2013	15:09:04					1098 sks 9.0 LiteCRETE									
02/16/2013	15:09:04					10 bbl D182 Water									
02/16/2013	15:09:04					Displace 223 bbl Fresh ater									
02/16/2013	15:09:04					Batch Up PressureNET									
02/16/2013	15:09:04					Rig Up Per Standard									
02/16/2013	15:09:04					Held Safety Meeting									
02/16/2013	15:09:04					Flow 3 bbl To Fill Lines									
02/16/2013	15:09:04	-5	0.0	0	0.0										
02/16/2013	15:09:07					Start Job									
02/16/2013	15:09:07	-5	0.0	0	0.0										
02/16/2013	15:09:08					Pressure Test Lines									
02/16/2013	15:09:08	-5	0.0	0	0.0										
02/16/2013	15:09:11					Low Test 500 psi									
02/16/2013	15:09:11					Test Good									

Well			Field		Job Start		Customer		Job Number	
SGU 8507C-35			Story Gulch Unit		Feb/16/2013		Encana		CFA0-00169	
Date	Time 24-hr clock	Treating Pressure PSI	Flow Rate B/M	Density NULL	Volume BBL	Message				
02/16/2013	15:09:11					Test Good				
02/16/2013	15:09:11	-4	0.0	0	0.0					
02/16/2013	15:09:12					Start Pumping				
02/16/2013	15:09:12	-5	0.0	0	0.0					
02/16/2013	15:11:35	-9	0.0	0	0.0					
02/16/2013	15:14:55	430	0.0	0	3.1					
02/16/2013	15:18:15	163	4.2	0	5.4					
02/16/2013	15:19:02					80 bbl PressureNET				
02/16/2013	15:19:02	101	3.9	0	8.5					
02/16/2013	15:19:04					No Returns				
02/16/2013	15:19:04	101	3.9	0	8.6					
02/16/2013	15:19:05					10 bbl Water				
02/16/2013	15:19:05	130	3.9	0	8.7					
02/16/2013	15:21:35	144	4.3	0	19.2					
02/16/2013	15:24:55	193	4.3	0	33.3					
02/16/2013	15:28:15	190	4.2	0	47.4					
02/16/2013	15:31:35	202	4.1	0	61.4					
02/16/2013	15:34:55	207	6.5	0	78.1					
02/16/2013	15:38:15	140	5.0	0	95.9					
02/16/2013	15:41:35	121	5.0	0	112.7					
02/16/2013	15:44:21					No Returns				
02/16/2013	15:44:21	201	5.0	0	126.6					
02/16/2013	15:44:22					20 bbl S001				
02/16/2013	15:44:22	211	5.0	0	126.6					
02/16/2013	15:44:24					10 bbl Water				
02/16/2013	15:44:24					30 bbl ZONELOCK				
02/16/2013	15:44:24	181	5.0	0	126.8					
02/16/2013	15:44:26					10 bbl Water				
02/16/2013	15:44:26					No Returns				
02/16/2013	15:44:26	177	5.0	0	127.0					
02/16/2013	15:44:55	167	5.0	0	129.4					
02/16/2013	15:48:15	187	5.0	0	146.0					
02/16/2013	15:50:26					80 bbl PressureNET				
02/16/2013	15:50:26	85	4.0	0	156.6					
02/16/2013	15:50:27					No Returns				
02/16/2013	15:50:27	82	4.0	0	156.7					
02/16/2013	15:51:35	124	3.6	0	159.9					
02/16/2013	15:54:55	163	3.6	0	172.1					
02/16/2013	15:58:15	72	3.9	0	184.9					
02/16/2013	16:01:35	106	3.9	0	197.8					
02/16/2013	16:04:55	60	3.9	0	210.7					
02/16/2013	16:08:15	60	3.9	0	223.5					
02/16/2013	16:11:35	58	3.9	0	236.4					
02/16/2013	16:14:55	59	3.9	0	249.3					
02/16/2013	16:18:15	57	3.9	0	262.1					
02/16/2013	16:21:35	111	5.7	0	275.3					
02/16/2013	16:23:17					10 bbl Water				
02/16/2013	16:23:17					20 bbl S001				
02/16/2013	16:23:17					10 bbl Water				
02/16/2013	16:23:17	259	6.5	0	285.3					
02/16/2013	16:23:18					No Returns				
02/16/2013	16:23:18	265	6.5	0	285.4					
02/16/2013	16:24:55	268	6.5	0	295.9					
02/16/2013	16:28:15	377	6.4	0	317.5					

Well			Field		Job Start	Customer	Job Number
SGU 8507C-35			Story Gulch Unit		Feb/16/2013	Encana	CFA0-00169
Date	Time 24-hr clock	Treating Pressure PSI	Flow Rate B/M	Density NULL	Volume BBL	Message	
02/16/2013	16:30:47					Some Returns	
02/16/2013	16:30:47	276	5.0	0	333.6		
02/16/2013	16:31:35	279	5.0	0	337.5		
02/16/2013	16:31:42					10 bbl Water	
02/16/2013	16:31:42					Some Returns	
02/16/2013	16:31:42	151	0.0	0	338.0		
02/16/2013	16:34:55	136	3.5	0	347.9		
02/16/2013	16:35:07					Start Pumping Spacer	
02/16/2013	16:35:07	111	3.6	0	348.6		
02/16/2013	16:35:10					50 bbl MUDPUSH EXPRESS	
02/16/2013	16:35:10					10 lbs/bbl D097	
02/16/2013	16:35:10					Returns	
02/16/2013	16:35:10	108	3.6	0	348.8		
02/16/2013	16:38:15	186	6.0	3	358.5		
02/16/2013	16:41:35	67	2.5	14	370.4		
02/16/2013	16:44:55	53	3.1	6	378.7		
02/16/2013	16:48:15	189	4.6	33	393.0		
02/16/2013	16:51:15					End Spacer	
02/16/2013	16:51:15	294	6.3	47	409.9		
02/16/2013	16:51:18					Start Cement Slurry	
02/16/2013	16:51:18	307	6.3	47	410.2		
02/16/2013	16:51:20					Start Mixing Lead Slurry	
02/16/2013	16:51:20	294	6.3	47	410.4		
02/16/2013	16:51:23					Wet Dry Sample	
02/16/2013	16:51:23					Test = 9.0 ppg	
02/16/2013	16:51:23					Good Returns	
02/16/2013	16:51:23					558 bbl 9.0 LiteCRETE	
02/16/2013	16:51:23					D095 in First 200 bbl	
02/16/2013	16:51:23	316	6.3	47	410.7		
02/16/2013	16:51:35	327	6.4	47	412.0		
02/16/2013	16:54:55	343	6.5	47	433.4		
02/16/2013	16:58:15	496	7.9	46	459.3		
02/16/2013	17:01:35	549	7.9	47	485.7		
02/16/2013	17:04:55	584	7.9	48	512.1		
02/16/2013	17:08:15	557	7.9	48	538.6		
02/16/2013	17:11:35	549	7.9	48	565.0		
02/16/2013	17:14:55	611	7.9	48	591.4		
02/16/2013	17:18:15	617	7.9	47	617.7		
02/16/2013	17:21:35	569	7.9	47	644.2		
02/16/2013	17:24:55	572	7.9	48	670.6		
02/16/2013	17:28:15	571	7.9	49	697.0		
02/16/2013	17:31:35	572	7.9	49	723.4		
02/16/2013	17:34:55	577	7.9	49	749.7		
02/16/2013	17:38:15	557	7.9	49	776.1		
02/16/2013	17:41:35	562	7.9	48	802.5		
02/16/2013	17:44:55	565	7.9	48	828.9		
02/16/2013	17:48:15	557	7.9	47	855.3		
02/16/2013	17:51:35	578	7.9	46	881.7		
02/16/2013	17:54:55	630	7.9	49	908.2		
02/16/2013	17:58:15	575	7.9	47	934.6		
02/16/2013	18:01:35	608	7.9	47	960.8		
02/16/2013	18:04:55	624	7.9	48	987.2		
02/16/2013	18:07:50					End Lead Slurry	
02/16/2013	18:07:50	595	7.9	47	1010.2		

Well			Field		Job Start		Customer		Job Number	
SGU 8507C-35			Story Gulch Unit		Feb/16/2013		Encana		CFA0-00169	
Date	Time 24-hr clock	Treating Pressure PSI	Flow Rate B/M	Density NULL	Volume BBL	Message				
02/16/2013	18:09:51					End Cement Slurry				
02/16/2013	18:09:51	58	1.1	50	1021.4					
02/16/2013	18:10:53					Drop Top Plug				
02/16/2013	18:10:53	63	1.0	50	1022.5					
02/16/2013	18:11:35	66	1.0	50	1023.2					
02/16/2013	18:14:55	193	5.1	11	1032.1					
02/16/2013	18:15:55					Start Displacement				
02/16/2013	18:15:55	262	5.5	6	1037.3					
02/16/2013	18:15:56					10 bbl D182 Water				
02/16/2013	18:15:56					223 bbl Fresh Water				
02/16/2013	18:15:56	261	6.0	6	1037.4					
02/16/2013	18:16:00					Good Returns				
02/16/2013	18:16:00	242	6.5	5	1037.8					
02/16/2013	18:18:15	279	6.6	4	1052.6					
02/16/2013	18:21:35	389	8.1	4	1075.7					
02/16/2013	18:24:55	429	7.9	0	1102.3					
02/16/2013	18:28:15	427	7.9	0	1128.6					
02/16/2013	18:31:35	443	7.9	0	1154.9					
02/16/2013	18:34:55	457	7.9	0	1181.2					
02/16/2013	18:38:15	468	7.9	0	1207.5					
02/16/2013	18:41:35	334	6.2	0	1233.6					
02/16/2013	18:44:55	291	4.4	0	1252.4					
02/16/2013	18:48:15	204	2.5	0	1263.9					
02/16/2013	18:51:35	877	0.0	0	1265.3					
02/16/2013	18:54:55	-9	0.0	0	1265.3					
02/16/2013	18:58:03					Bump Top Plug				
02/16/2013	18:58:03	-9	0.0	0	1265.3					
02/16/2013	18:58:07					End Displacement				
02/16/2013	18:58:07	-9	0.0	0	1265.3					
02/16/2013	18:58:08					Bleed Off Check Floats				
02/16/2013	18:58:08	-9	0.0	0	1265.3					
02/16/2013	18:58:09					Floats Held				
02/16/2013	18:58:09	-10	0.0	0	1265.3					
02/16/2013	18:58:10					1 bbl Back				
02/16/2013	18:58:10					300 bbl Cement To Surface				
02/16/2013	18:58:10					Wait To Pump Parisite Line				
02/16/2013	18:58:10	-10	0.0	0	1265.3					
02/16/2013	18:58:15	-9	0.0	0	1265.3					
02/16/2013	19:01:35	5	0.0	0	1265.3					
02/16/2013	19:04:55	-8	0.0	0	1265.3					
02/16/2013	19:08:15	-9	0.0	0	1265.3					
02/16/2013	19:11:35	-9	0.0	0	1265.3					
02/16/2013	19:14:55	-9	0.0	0	1265.3					
02/16/2013	19:18:15	-8	0.0	0	1265.3					
02/16/2013	19:21:35	-9	0.0	0	1265.3					
02/16/2013	19:24:55	-9	0.0	0	1265.3					
02/16/2013	19:28:15	-8	0.0	0	1265.3					
02/16/2013	19:31:35	-8	0.0	0	1265.3					
02/16/2013	19:34:55	-8	0.0	0	1265.3					
02/16/2013	19:38:15	-8	0.0	0	1265.3					
02/16/2013	19:41:35	-8	0.0	0	1265.3					
02/16/2013	19:44:55	-8	0.0	0	1265.3					
02/16/2013	19:48:15	-8	0.0	0	1265.3					
02/16/2013	19:51:35	-7	0.0	0	1268.7					

Well			Field		Job Start	Customer	Job Number
SGU 8507C-35			Story Gulch Unit		Feb/16/2013	Encana	CFA0-00169
Date	Time 24-hr clock	Treating Pressure PSI	Flow Rate B/M	Density NULL	Volume BBL	Message	
02/16/2013	19:58:15	16	0.0	0	1269.3		
02/16/2013	20:01:35	-8	0.0	0	1269.3		
02/16/2013	20:04:55	-7	0.0	0	1269.3		
02/16/2013	20:08:15	-7	0.0	0	1269.3		
02/16/2013	20:11:35	-7	0.0	0	1269.3		
02/16/2013	20:14:55	-8	0.0	0	1269.3		
02/16/2013	20:18:15	34	2.7	0	1271.8		
02/16/2013	20:21:35	-7	0.0	0	1272.4		
02/16/2013	20:24:55	-7	0.0	0	1272.4		
02/16/2013	20:28:15	-7	0.0	0	1272.4		
02/16/2013	20:31:35	-7	0.0	0	1272.4		
02/16/2013	20:34:55	-11	0.0	0	1272.4		
02/16/2013	20:38:15	-12	0.0	0	1272.4		
02/16/2013	20:41:35	-11	0.0	0	1272.4		
02/16/2013	20:44:55	21	3.0	0	1275.0		
02/16/2013	20:48:15	474	2.1	0	1283.0		
02/16/2013	20:49:42					Pump Out Parisite Line	
02/16/2013	20:49:42					11 bbl Sugar Water	
02/16/2013	20:49:42					Rig Down	
02/16/2013	20:49:42	-10	0.0	0	1283.5		
02/16/2013	20:49:44					End Job	
02/16/2013	20:49:44	-10	0.0	0	1283.5		

Post Job Summary

Average Pump Rates,					Volume of Fluid Injected,			
Slurry	N2	Mud	Maximum Rate	Total Slurry	Mud	Spacer	N2	
Treating Pressure Summary,					Breakdown Fluid			
Maximum	Final	Average	Bump Plug to	Breakdown	Type	Volume	Density	
Avg. N2 Percent	Designed Slurry Volume		Displacement	Mix Water Temp	Cement Circulated to Surface?	<input checked="" type="checkbox"/>	Volume	
					Washed Thru Perfs	<input type="checkbox"/>	To	
Customer or Authorized Representative			Schlumberger Supervisor			Circulation Lost	Job Completed	
Robert Escojeda			Jordan Moreland			-	-	