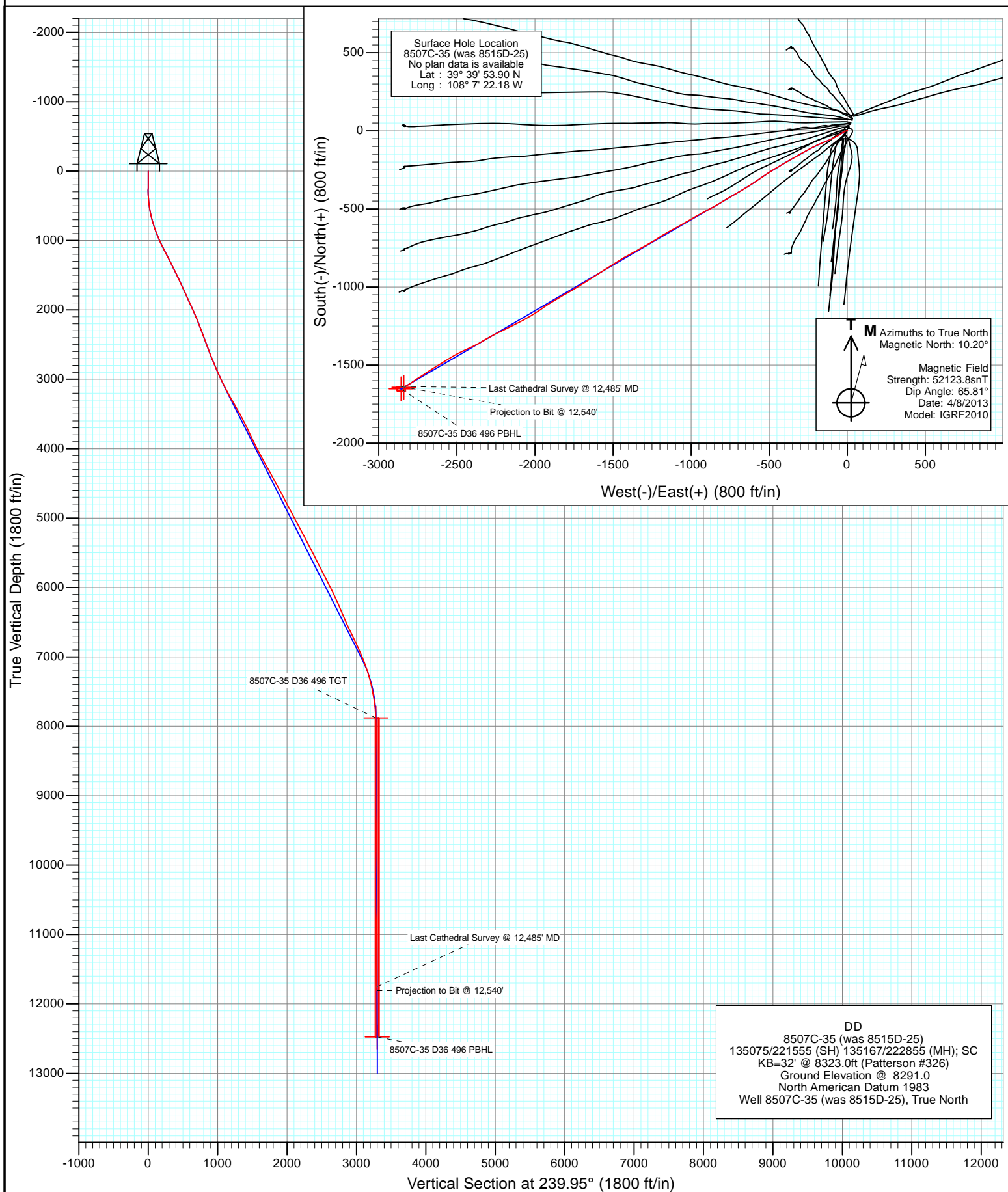


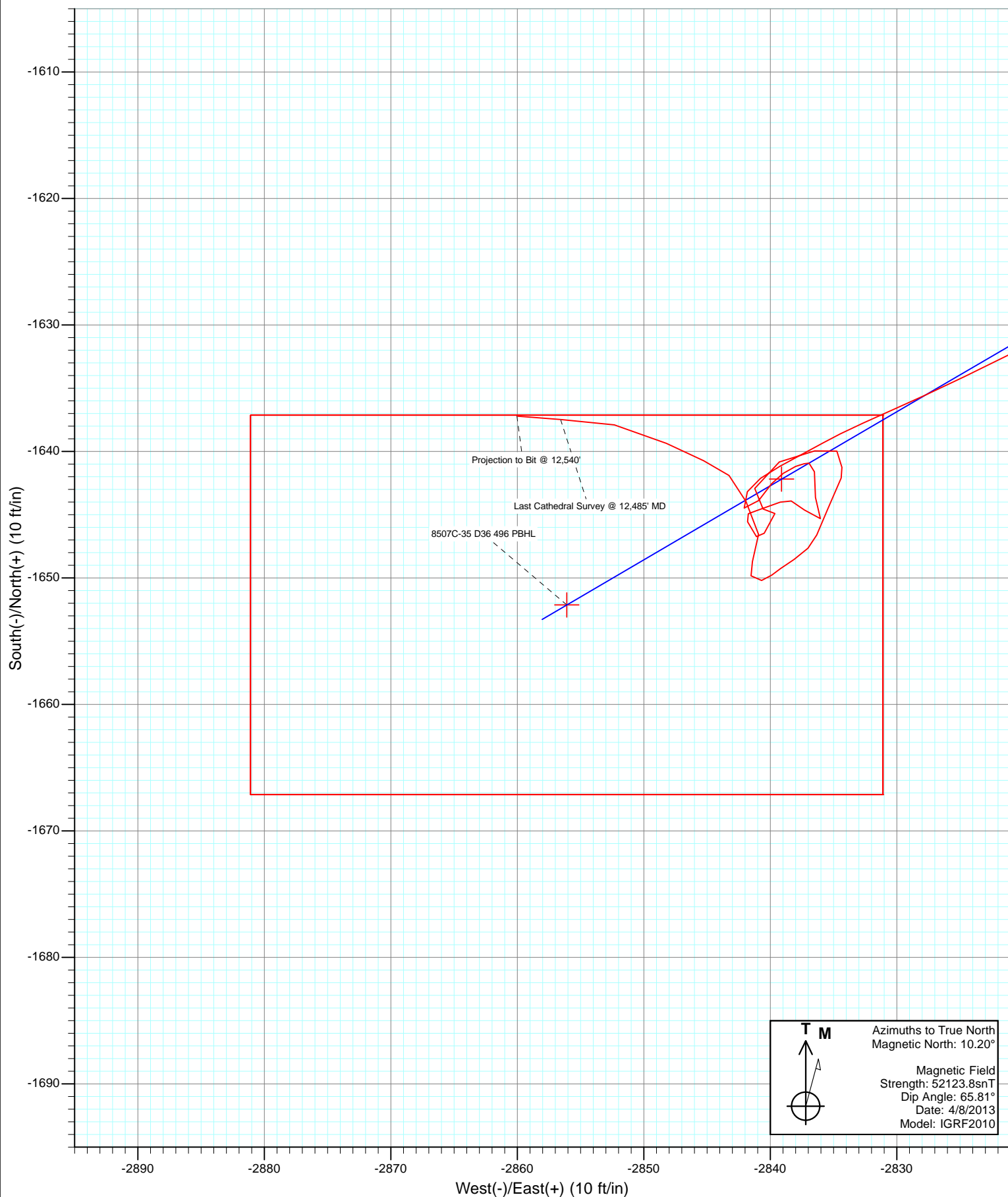


Project: Story Gulch  
Site: S36-T4S-R96W (D36 496)  
Well: 8507C-35 (was 8515D-25)  
Wellbore: DD  
Design: FINAL





Project: Story Gulch  
Site: S36-T4S-R96W (D36 496)  
Well: 8507C-35 (was 8515D-25)  
Wellbore: DD  
Design: FINAL



# Cathedral Energy Services

## Survey Report

<b>Company:</b>	EnCana Oil & Gas (USA) Inc	<b>Local Co-ordinate Reference:</b>	Well 8507C-35 (was 8515D-25)
<b>Project:</b>	Story Gulch	<b>TVD Reference:</b>	KB=32' @ 8323.0ft (Patterson #326)
<b>Site:</b>	S36-T4S-R96W (D36 496)	<b>MD Reference:</b>	KB=32' @ 8323.0ft (Patterson #326)
<b>Well:</b>	8507C-35 (was 8515D-25)	<b>North Reference:</b>	True
<b>Wellbore:</b>	DD	<b>Survey Calculation Method:</b>	Minimum Curvature
<b>Design:</b>	DD	<b>Database:</b>	USA EDM 5000 Multi Users DB

<b>Project</b>	Story Gulch		
<b>Map System:</b>	US State Plane 1983	<b>System Datum:</b>	Mean Sea Level
<b>Geo Datum:</b>	North American Datum 1983		
<b>Map Zone:</b>	Colorado Central Zone		

Site		S36-T4S-R96W (D36 496)			
Site Position:		Northing:	1,590,537.44 ft	Latitude:	39° 25' 42.24 N
From:	Lat/Long	Easting:	2,297,786.47 ft	Longitude:	107° 59' 10.64 W
Position Uncertainty:	0.0 ft	Slot Radius:	13.200 in	Grid Convergence:	-1.57 °

Well	8507C-35 (was 8515D-25)					
Well Position	+N/-S	0.0 ft	Northing:	1,677,756.43 ft	Latitude:	39° 39' 53.90 N
	+E/-W	0.0 ft	Easting:	2,261,720.82 ft	Longitude:	108° 7' 22.18 W
Position Uncertainty		0.0 ft	Wellhead Elevation:	ft	Ground Level:	8,291.0 ft

<b>Wellbore</b>	DD				
<b>Magnetics</b>	<b>Model Name</b>	<b>Sample Date</b>	<b>Declination (°)</b>	<b>Dip Angle (°)</b>	<b>Field Strength (nT)</b>
	IGRF2010	4/8/2013	10.20	65.81	52,124

<b>Design</b>	DD				
<b>Audit Notes:</b>					
<b>Version:</b>	1.0	<b>Phase:</b>	ACTUAL	<b>Tie On Depth:</b>	0.0
<b>Vertical Section:</b>	<b>Depth From (TVD)</b>	<b>+N/-S (ft)</b>	<b>+E/-W (ft)</b>	<b>Direction (°)</b>	
	0.0	0.0	0.0	239.95	

<b>Survey Program</b>	<b>Date</b>	4/17/2013			
<b>From (ft)</b>	<b>To (ft)</b>	<b>Survey (Wellbore)</b>	<b>Tool Name</b>	<b>Description</b>	
184.0	12,540.0	Survey #1 (DD)	MWD	Geolink MWD	

<b>Survey</b>										
<b>Measured Depth (ft)</b>	<b>Inclination (°)</b>	<b>Azimuth (°)</b>	<b>Vertical Depth (ft)</b>	<b>+N/-S (ft)</b>	<b>+E/-W (ft)</b>	<b>Vertical Section (ft)</b>	<b>Dogleg Rate (°/100ft)</b>	<b>Build Rate (°/100ft)</b>	<b>Formations / Comments</b>	
0.0	0.00	0.00	0.0	0.0	0.0	0.0	0.00	0.00		
184.0	0.40	88.60	184.0	0.0	0.6	-0.6	0.22	0.22		
214.0	0.40	85.90	214.0	0.0	0.9	-0.7	0.06	0.00		
245.0	0.40	71.00	245.0	0.1	1.1	-1.0	0.33	0.00		
276.0	0.30	347.50	276.0	0.2	1.1	-1.1	1.52	-0.32		
306.0	1.10	306.30	306.0	0.4	0.9	-1.0	2.99	2.67		
337.0	2.00	285.60	337.0	0.8	0.1	-0.5	3.37	2.90		
367.0	3.40	268.10	366.9	0.9	-1.3	0.7	5.36	4.67		
398.0	4.60	259.90	397.9	0.6	-3.4	2.6	4.28	3.87		
428.0	5.60	251.50	427.8	-0.1	-6.0	5.2	4.15	3.33		
458.0	6.70	249.40	457.6	-1.1	-9.0	8.4	3.74	3.67		
488.0	7.80	247.30	487.3	-2.5	-12.5	12.1	3.77	3.67		
519.0	9.00	243.70	518.0	-4.4	-16.6	16.6	4.22	3.87		

# Cathedral Energy Services

## Survey Report

<b>Company:</b>	EnCana Oil & Gas (USA) Inc	<b>Local Co-ordinate Reference:</b>	Well 8507C-35 (was 8515D-25)
<b>Project:</b>	Story Gulch	<b>TVD Reference:</b>	KB=32' @ 8323.0ft (Patterson #326)
<b>Site:</b>	S36-T4S-R96W (D36 496)	<b>MD Reference:</b>	KB=32' @ 8323.0ft (Patterson #326)
<b>Well:</b>	8507C-35 (was 8515D-25)	<b>North Reference:</b>	True
<b>Wellbore:</b>	DD	<b>Survey Calculation Method:</b>	Minimum Curvature
<b>Design:</b>	DD	<b>Database:</b>	USA EDM 5000 Multi Users DB

Survey									
Measured Depth (ft)	Inclination (°)	Azimuth (°)	Vertical Depth (ft)	+N/-S (ft)	+E/-W (ft)	Vertical Section (ft)	Dogleg Rate (°/100ft)	Build Rate (°/100ft)	Formations / Comments
570.0	10.50	240.10	568.3	-8.5	-24.2	25.2	3.17	2.94	
613.0	11.90	236.10	610.5	-12.9	-31.3	33.6	3.72	3.26	
705.0	15.00	239.10	699.9	-24.3	-49.4	55.0	3.45	3.37	
796.0	17.80	242.30	787.2	-36.9	-71.8	80.6	3.23	3.08	
887.0	20.70	243.10	873.1	-50.6	-98.5	110.6	3.20	3.19	
979.0	23.60	246.20	958.3	-65.4	-129.9	145.1	3.40	3.15	
1,070.0	25.80	248.60	1,041.0	-80.0	-165.0	182.8	2.66	2.42	
1,162.0	26.90	244.30	1,123.4	-96.3	-202.4	223.4	2.39	1.20	
1,253.0	27.60	242.00	1,204.3	-115.1	-239.5	265.0	1.39	0.77	
1,345.0	27.20	240.40	1,286.0	-135.5	-276.6	307.3	0.91	-0.43	
1,437.0	26.40	240.70	1,368.1	-155.9	-312.7	348.8	0.88	-0.87	
1,528.0	25.80	240.20	1,449.9	-175.7	-347.6	388.8	0.70	-0.66	
1,619.0	25.70	239.70	1,531.8	-195.5	-381.8	428.4	0.26	-0.11	
1,711.0	24.60	239.80	1,615.1	-215.2	-415.6	467.5	1.20	-1.20	
1,802.0	24.40	238.80	1,697.9	-234.4	-448.0	505.2	0.51	-0.22	
1,893.0	24.60	238.60	1,780.7	-254.0	-480.3	542.9	0.24	0.22	
1,985.0	24.70	236.50	1,864.3	-274.6	-512.6	581.2	0.96	0.11	
2,076.0	24.40	235.70	1,947.1	-295.7	-544.0	619.0	0.49	-0.33	
2,167.0	23.80	235.10	2,030.2	-316.8	-574.6	656.0	0.71	-0.66	
2,259.0	22.90	237.20	2,114.6	-337.1	-604.9	692.4	1.33	-0.98	
2,351.0	21.80	238.00	2,199.7	-355.9	-634.4	727.3	1.24	-1.20	
2,442.0	21.10	237.90	2,284.4	-373.5	-662.6	760.6	0.77	-0.77	
2,533.0	20.10	240.00	2,369.6	-390.0	-690.0	792.6	1.37	-1.10	
2,623.0	19.70	241.00	2,454.2	-405.1	-716.7	823.2	0.58	-0.44	
2,715.0	20.50	240.30	2,540.6	-420.6	-744.2	854.8	0.91	0.87	
2,806.0	21.00	238.20	2,625.7	-437.1	-771.9	887.1	0.98	0.55	
2,898.0	22.50	238.60	2,711.2	-455.0	-801.0	921.2	1.64	1.63	
2,990.0	23.60	240.50	2,795.8	-473.2	-832.0	957.2	1.44	1.20	
3,021.0	23.70	241.00	2,824.2	-479.3	-842.9	969.6	0.72	0.32	
3,077.0	24.00	240.80	2,875.4	-490.3	-862.7	992.2	0.55	0.54	
3,170.0	25.20	242.10	2,960.0	-508.8	-896.7	1,030.9	1.42	1.29	
3,261.0	25.30	242.20	3,042.3	-526.9	-931.0	1,069.7	0.12	0.11	
3,352.0	26.40	239.90	3,124.2	-546.2	-965.7	1,109.4	1.64	1.21	
3,444.0	29.40	239.50	3,205.5	-567.9	-1,002.9	1,152.4	3.27	3.26	
3,535.0	30.60	241.20	3,284.3	-590.4	-1,042.4	1,197.9	1.62	1.32	
3,627.0	28.50	240.10	3,364.3	-612.6	-1,082.0	1,243.3	2.36	-2.28	
3,718.0	29.90	242.00	3,443.8	-634.1	-1,120.8	1,287.7	1.84	1.54	
3,810.0	29.10	240.10	3,523.8	-656.0	-1,160.5	1,333.0	1.34	-0.87	
3,901.0	27.40	236.30	3,604.0	-678.6	-1,197.1	1,376.0	2.72	-1.87	
3,994.0	25.20	238.80	3,687.4	-700.8	-1,231.8	1,417.2	2.65	-2.37	
4,085.0	25.90	240.00	3,769.5	-720.7	-1,265.6	1,456.4	0.96	0.77	
4,177.0	25.00	243.40	3,852.6	-739.5	-1,300.4	1,495.9	1.86	-0.98	
4,268.0	26.00	238.10	3,934.7	-758.7	-1,334.5	1,535.0	2.74	1.10	
4,359.0	27.30	241.50	4,016.0	-779.2	-1,369.8	1,575.8	2.20	1.43	
4,451.0	28.60	241.50	4,097.3	-799.7	-1,407.7	1,618.9	1.41	1.41	
4,542.0	29.00	236.70	4,177.1	-822.2	-1,445.3	1,662.7	2.58	0.44	
4,634.0	29.70	239.30	4,257.2	-846.1	-1,483.5	1,707.8	1.58	0.76	
4,726.0	28.90	236.80	4,337.5	-869.9	-1,521.7	1,752.8	1.59	-0.87	
4,817.0	28.40	238.50	4,417.3	-893.3	-1,558.6	1,796.4	1.05	-0.55	
4,909.0	28.30	238.20	4,498.3	-916.2	-1,595.7	1,840.1	0.19	-0.11	
5,001.0	29.00	236.70	4,579.0	-939.9	-1,632.9	1,884.1	1.09	0.76	
5,092.0	28.00	234.80	4,659.0	-964.4	-1,668.8	1,927.4	1.48	-1.10	
5,183.0	27.60	240.90	4,739.5	-986.9	-1,704.7	1,969.8	3.16	-0.44	

# Cathedral Energy Services

## Survey Report

<b>Company:</b>	EnCana Oil & Gas (USA) Inc	<b>Local Co-ordinate Reference:</b>	Well 8507C-35 (was 8515D-25)
<b>Project:</b>	Story Gulch	<b>TVD Reference:</b>	KB=32' @ 8323.0ft (Patterson #326)
<b>Site:</b>	S36-T4S-R96W (D36 496)	<b>MD Reference:</b>	KB=32' @ 8323.0ft (Patterson #326)
<b>Well:</b>	8507C-35 (was 8515D-25)	<b>North Reference:</b>	True
<b>Wellbore:</b>	DD	<b>Survey Calculation Method:</b>	Minimum Curvature
<b>Design:</b>	DD	<b>Database:</b>	USA EDM 5000 Multi Users DB

Survey									
Measured Depth (ft)	Inclination (°)	Azimuth (°)	Vertical Depth (ft)	+N/-S (ft)	+E/-W (ft)	Vertical Section (ft)	Dogleg Rate (°/100ft)	Build Rate (°/100ft)	Formations / Comments
5,275.0	27.50	239.40	4,821.1	-1,008.1	-1,741.6	2,012.3	0.76	-0.11	
5,366.0	28.10	237.90	4,901.6	-1,030.2	-1,777.8	2,054.8	1.01	0.66	
5,457.0	27.20	242.50	4,982.2	-1,051.2	-1,814.5	2,097.0	2.55	-0.99	
5,549.0	28.10	237.20	5,063.7	-1,072.6	-1,851.3	2,139.6	2.85	0.98	
5,640.0	29.10	240.50	5,143.6	-1,095.1	-1,888.6	2,183.1	2.05	1.10	
5,732.0	28.00	235.00	5,224.4	-1,118.5	-1,925.8	2,227.0	3.10	-1.20	
5,824.0	27.20	235.10	5,306.0	-1,143.0	-1,960.7	2,269.5	0.87	-0.87	
5,916.0	27.30	239.10	5,387.8	-1,165.8	-1,996.1	2,311.6	1.99	0.11	
6,007.0	27.70	239.40	5,468.5	-1,187.3	-2,032.2	2,353.6	0.47	0.44	
6,099.0	27.00	239.20	5,550.2	-1,208.9	-2,068.5	2,395.8	0.77	-0.76	
6,191.0	26.10	243.80	5,632.5	-1,228.5	-2,104.6	2,436.9	2.44	-0.98	
6,282.0	27.40	243.10	5,713.8	-1,246.8	-2,141.2	2,477.8	1.47	1.43	
6,373.0	27.10	243.80	5,794.7	-1,265.5	-2,178.5	2,519.4	0.48	-0.33	
6,465.0	27.30	245.10	5,876.5	-1,283.6	-2,216.5	2,561.3	0.68	0.22	
6,556.0	27.10	242.80	5,957.4	-1,301.9	-2,253.8	2,602.8	1.18	-0.22	
6,648.0	26.50	240.50	6,039.6	-1,321.5	-2,290.3	2,644.2	1.30	-0.65	
6,739.0	25.80	240.00	6,121.2	-1,341.4	-2,325.1	2,684.4	0.81	-0.77	
6,830.0	23.20	240.60	6,204.0	-1,360.1	-2,357.9	2,722.1	2.87	-2.86	
6,922.0	23.50	244.20	6,288.5	-1,377.0	-2,390.2	2,758.5	1.58	0.33	
7,014.0	23.30	246.40	6,372.9	-1,392.3	-2,423.4	2,794.9	0.97	-0.22	
7,105.0	23.50	244.00	6,456.5	-1,407.5	-2,456.2	2,830.9	1.07	0.22	
7,196.0	24.20	241.20	6,539.7	-1,424.4	-2,488.9	2,867.6	1.46	0.77	
7,288.0	25.30	240.80	6,623.2	-1,443.1	-2,522.5	2,906.1	1.21	1.20	
7,379.0	25.70	238.50	6,705.4	-1,462.9	-2,556.3	2,945.3	1.17	0.44	
7,471.0	25.80	237.90	6,788.2	-1,483.9	-2,590.3	2,985.2	0.30	0.11	
7,562.0	25.10	240.10	6,870.4	-1,504.1	-2,623.8	3,024.3	1.29	-0.77	
7,653.0	24.30	236.80	6,953.1	-1,523.9	-2,656.2	3,062.3	1.75	-0.88	
7,745.0	20.70	236.30	7,038.1	-1,543.3	-2,685.6	3,097.5	3.92	-3.91	
7,836.0	20.30	235.40	7,123.3	-1,561.2	-2,712.0	3,129.2	0.56	-0.44	
7,928.0	17.90	239.20	7,210.2	-1,577.5	-2,737.3	3,159.3	2.94	-2.61	
8,019.0	15.70	235.20	7,297.4	-1,591.7	-2,759.4	3,185.6	2.73	-2.42	
8,111.0	12.10	236.40	7,386.6	-1,604.2	-2,777.6	3,207.6	3.93	-3.91	
8,203.0	12.20	234.90	7,476.6	-1,615.1	-2,793.6	3,226.9	0.36	0.11	
8,295.0	10.60	237.60	7,566.8	-1,625.2	-2,808.7	3,245.0	1.83	-1.74	
8,386.0	7.60	243.50	7,656.6	-1,632.4	-2,821.2	3,259.4	3.45	-3.30	
8,478.0	5.10	246.50	7,748.0	-1,636.7	-2,830.4	3,269.5	2.74	-2.72	
8,570.0	2.40	240.30	7,839.8	-1,639.3	-2,835.8	3,275.5	2.96	-2.93	
8,661.0	2.50	243.10	7,930.8	-1,641.2	-2,839.2	3,279.4	0.17	0.11	
8,753.0	1.70	215.10	8,022.7	-1,643.2	-2,841.8	3,282.7	1.39	-0.87	
8,845.0	0.70	107.50	8,114.7	-1,644.5	-2,842.1	3,283.5	2.20	-1.09	
8,937.0	1.20	38.30	8,206.7	-1,643.9	-2,840.9	3,282.3	1.26	0.54	
9,029.0	0.90	35.90	8,298.7	-1,642.5	-2,839.9	3,280.7	0.33	-0.33	
9,120.0	0.70	65.30	8,389.6	-1,641.7	-2,839.0	3,279.5	0.49	-0.22	
9,212.0	0.70	55.70	8,481.6	-1,641.2	-2,838.0	3,278.4	0.13	0.00	
9,303.0	0.30	117.40	8,572.6	-1,641.0	-2,837.3	3,277.7	0.68	-0.44	
9,395.0	0.30	47.80	8,664.6	-1,640.9	-2,836.9	3,277.3	0.37	0.00	
9,486.0	1.10	163.10	8,755.6	-1,641.6	-2,836.5	3,277.3	1.38	0.88	
9,578.0	1.50	188.60	8,847.6	-1,643.6	-2,836.4	3,278.2	0.75	0.43	
9,670.0	0.80	122.40	8,939.6	-1,645.2	-2,836.1	3,278.7	1.51	-0.76	
9,761.0	0.70	291.90	9,030.6	-1,645.3	-2,836.0	3,278.7	1.64	-0.11	
9,852.0	1.10	302.30	9,121.6	-1,644.6	-2,837.3	3,279.5	0.47	0.44	
9,943.0	0.50	309.10	9,212.6	-1,643.9	-2,838.3	3,280.0	0.67	-0.66	
10,035.0	0.80	238.00	9,304.6	-1,644.0	-2,839.2	3,280.8	0.86	0.33	

# Cathedral Energy Services

## Survey Report

<b>Company:</b>	EnCana Oil & Gas (USA) Inc	<b>Local Co-ordinate Reference:</b>	Well 8507C-35 (was 8515D-25)
<b>Project:</b>	Story Gulch	<b>TVD Reference:</b>	KB=32' @ 8323.0ft (Patterson #326)
<b>Site:</b>	S36-T4S-R96W (D36 496)	<b>MD Reference:</b>	KB=32' @ 8323.0ft (Patterson #326)
<b>Well:</b>	8507C-35 (was 8515D-25)	<b>North Reference:</b>	True
<b>Wellbore:</b>	DD	<b>Survey Calculation Method:</b>	Minimum Curvature
<b>Design:</b>	DD	<b>Database:</b>	USA EDM 5000 Multi Users DB

Survey									
Measured Depth (ft)	Inclination (°)	Azimuth (°)	Vertical Depth (ft)	+N/-S (ft)	+E/-W (ft)	Vertical Section (ft)	Dogleg Rate (°/100ft)	Build Rate (°/100ft)	Formations / Comments
10,127.0	1.70	255.70	9,396.5	-1,644.7	-2,841.1	3,282.8	1.05	0.98	
10,218.0	1.00	132.80	9,487.5	-1,645.6	-2,841.8	3,283.8	2.63	-0.77	
10,310.0	0.80	170.50	9,579.5	-1,646.7	-2,841.1	3,283.8	0.66	-0.22	
10,401.0	1.30	30.00	9,670.5	-1,646.5	-2,840.5	3,283.2	2.18	0.55	
10,493.0	0.90	26.00	9,762.5	-1,644.9	-2,839.6	3,281.7	0.44	-0.43	
10,584.0	1.60	257.40	9,853.5	-1,644.5	-2,840.6	3,282.3	2.50	0.77	
10,675.0	2.50	17.00	9,944.5	-1,642.9	-2,841.2	3,282.0	3.93	0.99	
10,767.0	1.70	83.00	10,036.4	-1,640.8	-2,839.3	3,279.3	2.59	-0.87	
10,859.0	2.00	63.50	10,128.4	-1,640.0	-2,836.5	3,276.5	0.75	0.33	
10,951.0	1.00	156.50	10,220.3	-1,640.0	-2,834.7	3,274.9	2.48	-1.09	
11,042.0	0.70	171.30	10,311.3	-1,641.3	-2,834.3	3,275.2	0.41	-0.33	
11,134.0	0.40	207.50	10,403.3	-1,642.1	-2,834.4	3,275.7	0.48	-0.33	
11,317.0	1.30	201.90	10,586.3	-1,644.6	-2,835.5	3,277.9	0.49	0.49	
11,407.0	1.50	204.00	10,676.3	-1,646.6	-2,836.3	3,279.6	0.23	0.22	
11,499.0	1.90	237.20	10,768.2	-1,648.5	-2,838.1	3,282.1	1.13	0.43	
11,591.0	0.80	230.40	10,860.2	-1,649.8	-2,839.9	3,284.3	1.21	-1.20	
11,682.0	0.40	265.90	10,951.2	-1,650.2	-2,840.7	3,285.2	0.58	-0.44	
11,774.0	0.80	307.50	11,043.2	-1,649.8	-2,841.5	3,285.7	0.62	0.43	
11,866.0	1.20	40.20	11,135.2	-1,648.7	-2,841.4	3,285.1	1.60	0.43	
11,957.0	1.80	354.50	11,226.2	-1,646.6	-2,840.9	3,283.6	1.42	0.66	
12,049.0	1.80	323.70	11,318.1	-1,644.0	-2,841.9	3,283.1	1.04	0.00	
12,140.0	1.30	331.40	11,409.1	-1,641.9	-2,843.3	3,283.3	0.59	-0.55	
12,232.0	1.90	279.00	11,501.0	-1,640.7	-2,845.3	3,284.4	1.64	0.65	
12,324.0	2.30	308.40	11,593.0	-1,639.4	-2,848.2	3,286.3	1.23	0.43	
12,415.0	3.40	276.90	11,683.9	-1,637.9	-2,852.3	3,289.1	2.06	1.21	
12,485.0	3.60	274.50	11,753.7	-1,637.5	-2,856.6	3,292.6	0.35	0.29	Last Cathedral Survey @ 12,485' MD
12,540.0	3.60	274.50	11,808.6	-1,637.2	-2,860.0	3,295.4	0.00	0.00	Projection to Bit @ 12,540'

Targets									
Target Name	Dip Angle (°)	Dip Dir. (°)	TVD (ft)	+N/-S (ft)	+E/-W (ft)	Northing (ft)	Easting (ft)	Latitude	Longitude
8507C-35 D36 496 TGT - hit/miss target - Shape - Point	0.00	0.00	7,881.0	-1,642.2	-2,839.1	1,676,196.88	2,258,835.50	39° 39' 37.67 N	108° 7' 58.48 W
- survey misses target center by 2.7ft at 8611.3ft MD (7881.1 TVD, -1640.2 N, -2837.3 E)									
8507C-35 D36 496 PBH - survey misses target center by 668.5ft at 12540.0ft MD (11808.6 TVD, -1637.2 N, -2860.0 E) - Rectangle (sides W30.0 H50.0 D0.0)	0.00	0.00	12,477.0	-1,652.1	-2,856.1	1,676,187.42	2,258,818.23	39° 39' 37.57 N	108° 7' 58.70 W

Survey Annotations				
Measured Depth (ft)	Vertical Depth (ft)	+N/-S (ft)	+E/-W (ft)	Comment
12,485.0	11,753.7	-1,637.5	-2,856.6	Last Cathedral Survey @ 12,485' MD
12,540.0	11,808.6	-1,637.2	-2,860.0	Projection to Bit @ 12,540'

Checked By: \_\_\_\_\_ Approved By: \_\_\_\_\_ Date: \_\_\_\_\_