

T7N, R80W, 6th P.M.

Alum Cap 2008
PLS 24303
Flush w/Grd

EE3, LLC

Well location, JANET 7-80 #1-5H, located as shown in the NE1/4NE1/4 of Section 5, T7N, R80W, 6th P.M., Jackson County, Colorado.

BASIS OF BEARINGS

BASIS OF BEARINGS IS TRUE NORTH USING GPS

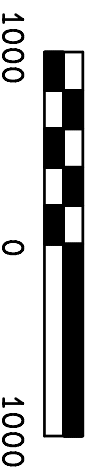
BASIS OF ELEVATION

SPOT ELEVATION AT THE NE CORNER OF SECTION 5, T7N, R80W, 6TH PM, TAKEN FROM THE COALMONT QUADRANGLE, USGS 7.5 MIN QUAD (TOPOGRAPHIC MAP) WITH SAID ELEVATION MARKED AS BEING 8081 FEET.

SURFACE USE

AGRICULTURAL/CROPLAND

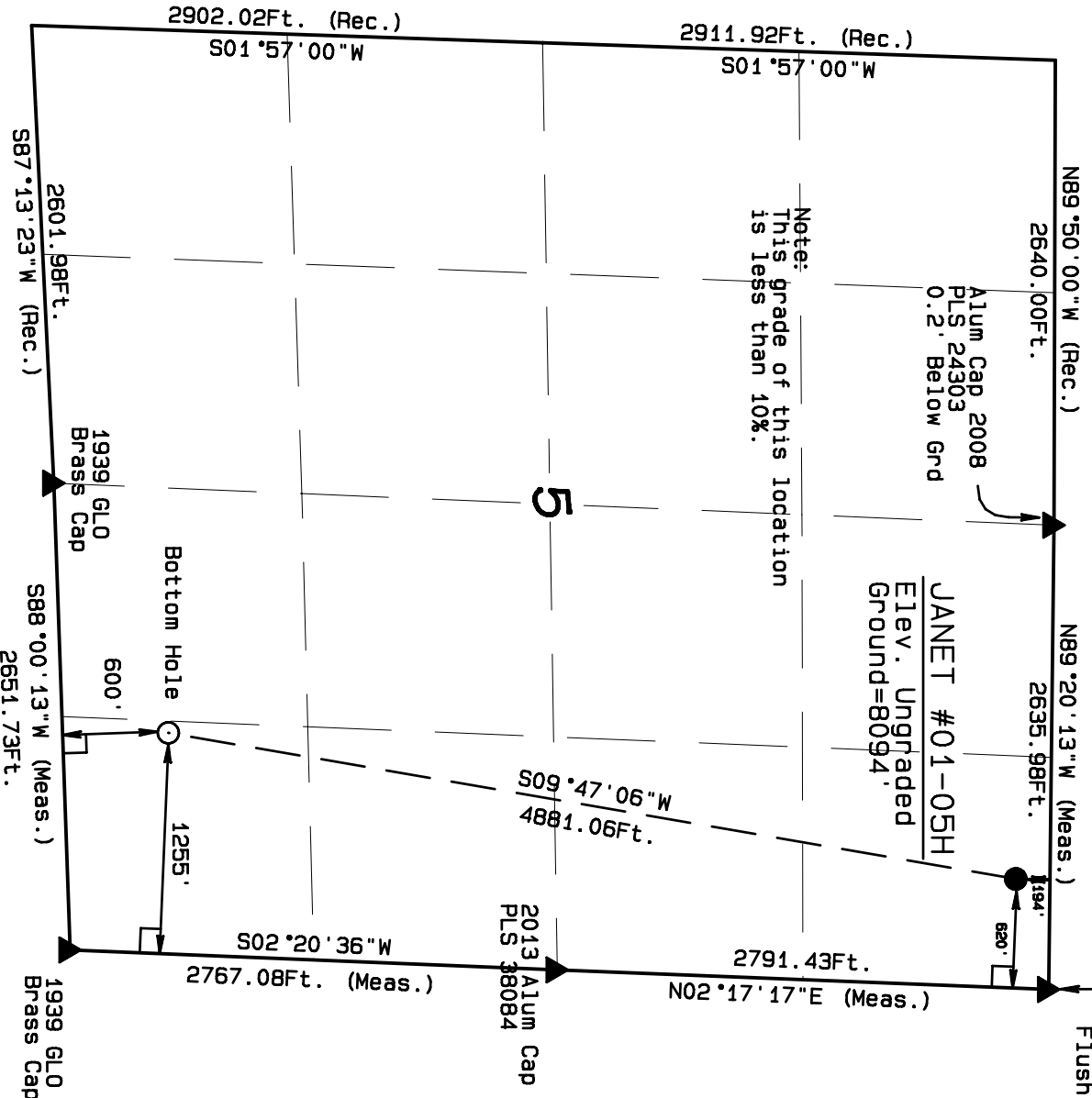
GRAPHIC SCALE 1"=1000'



I RANDALL R. MILLER, BEING A REGISTERED LAND SURVEYOR IN THE STATE OF COLORADO, DO HEREBY CERTIFY THAT THIS PLAT WAS MADE BY ME AND/OR UNDER MY DIRECT SUPERVISION AND THAT IT IS ACCURATE TO THE BEST OF MY KNOWLEDGE.

DATED THIS _____ DAY OF _____, 2013.

RANDALL R. MILLER, COLORADO PLS NO. 38084



LEGEND

90° SYMBOL
FOUND CORNER
PROPOSED WELL

NAD 83 (TARGET BOTTOM HOLE) NAD 83 (SURFACE LOCATION)

LATITUDE=40.601396°N LATITUDE=40.614621°N
LONGITUDE=106.392345°W LONGITUDE=106.389532°W

PDOP = 2.751

NORTH PARK ENGINEERING & CONSULTING, INC.

P.O. BOX 395
WALDEN, CO 80480
(970) 723-3725

DATE OF FIELD WORK: MAY 18, 2013 DRAFTING COMPLETION: MAY 30, 2013
SURVEYED BY: RAS DRAWN BY: RRM CHECKED BY: RAS
SHEET 1 OF 1 JOB NO.: 13-017